

WALKER CREEK

R.V.N.

330 D.

-5 ch. 100m

KAWARRA

STATE HIGHWAY NO 6
TO QUEENSTOWN

LONG GULLY

80 CH. 1600 METRES

40 ACRES (16 HECTARES)

20 ACRES (8 HECTARES)

106 800 METRES

KILBOUR & CONNELLY
Reg. Claim

PEARSON RD

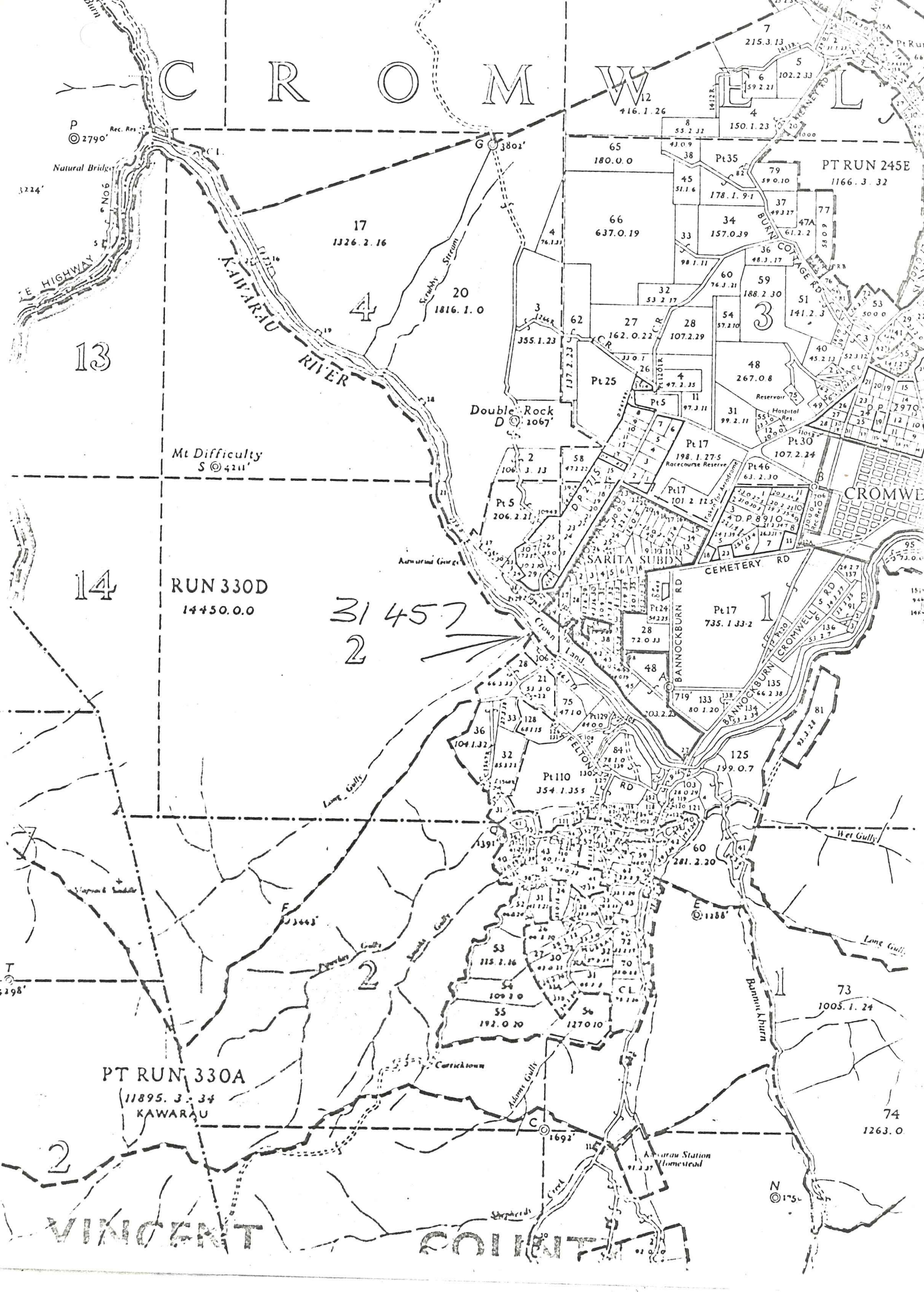
FULTON ROAD

No 6

PIPECLAY



C R O M W E L L



13

17
1326.2.16

4

20
1816.1.0

14

RUN 330D
14450.0.0

31 457
2

PT RUN 330A
11895.3.34
KAWARAU

VINCENT COUNTY

PT RUN 245E
1166.3.32

66
637.0.19

3

48
267.0.8

Mt Difficulty
S @ 4211'

Double Rock
D @ 1067'

CROMWELL

Pt 17
735.133.2

Pt 110
354.135.5

73
1005.1.24

74
1263.0

N
@ 175'