

No.

Appin.
33097

29

206.4377

717

85

16
25.1512

River

CROWN

Manuherikia

AREA APPLIED FOR
28 ha

0.7769



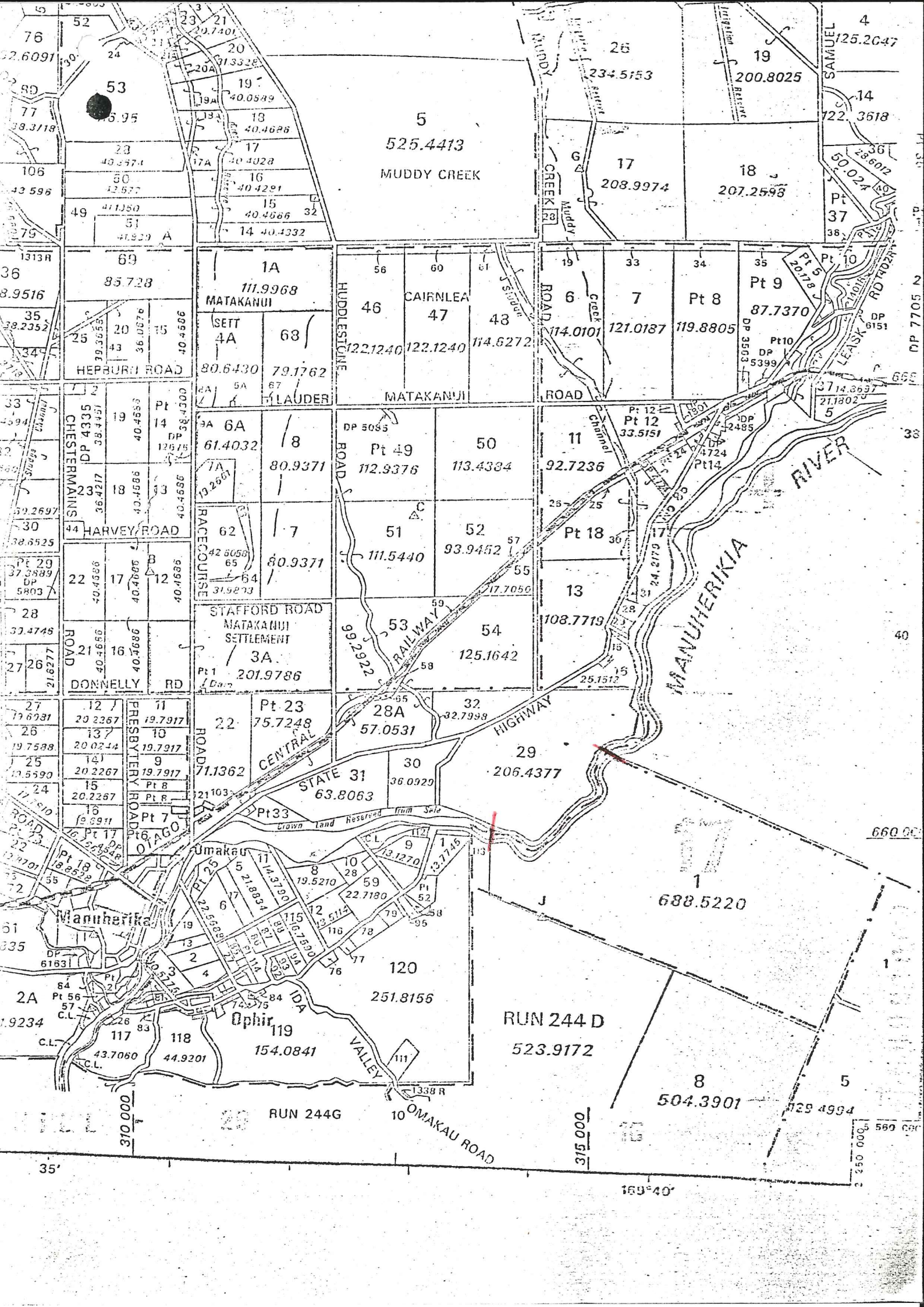
BLK. XVII

BLOCKS II & XVII TIGER HILL S.D

Scale: 1:10,000

S.O. 1

TIGER



5
525.4413
MUDDY CREEK

1A
111.9968
MATAKANUI

SETT
4A 63
80.6430 79.1762

6A
61.4032
80.9371

7
80.9371

STAFFORD ROAD
MATAKANUI
SETTLEMENT
3A
201.9786

Pt 23
75.7248

11
114.3730

118
154.0841

119
154.0841

117
43.7060

118
44.9201

46 CAIRNLEA
47
122.1240 122.1240 114.6272

Pt 49
112.9376

51
111.5440

54
125.1642

28A
57.0531

STATE 31
63.8063

120
251.8156

119
154.0841

117
43.7060

118
44.9201

17
208.9974

6
114.0101

7
121.0187

11
92.7236

Pt 18
108.7719

29
206.4377

1
688.5220

RUN 244 D
523.9172

8
504.3901

5
129.4994

1
125.2647

18
207.2598

Pt 8
119.8805

Pt 9
87.7370

Pt 12
33.5151

Pt 14
47.24

13
108.7719

1
688.5220

RUN 244 D
523.9172

8
504.3901

5
129.4994

1
125.2647

4
125.2647
SAMUEL

14
22.3518

Pt 10
20.178

Pt 10
37.14.3637

5
21.1802

1
688.5220

1
688.5220

1
688.5220

1
688.5220

1
688.5220

1
688.5220

1
688.5220

76
22.6091

106
43.596

36
8.9516

35
38.2352

30
38.6525

28
33.4745

27
19.6931

26
19.7588

25
19.5590

24
17.7510

22
19.9701

21
18.2512

52
20.7401

20
21.3328

19
40.0589

18
40.4626

17
40.4028

16
40.4201

15
40.4686

14
40.4332

13
40.4332

12
40.4332

11
40.4332

10
40.4332

53
16.95

23
40.3714

20
40.4028

19
40.4028

18
40.4201

17
40.4686

16
40.4332

15
40.4332

14
40.4332

13
40.4332

12
40.4332

11
40.4332

77
38.3118

49
41.1250

36
8.9516

35
38.2352

30
38.6525

28
33.4745

27
19.6931

26
19.7588

25
19.5590

24
17.7510

22
19.9701

21
18.2512

52
20.7401

20
21.3328

19
40.0589

18
40.4626

17
40.4028

16
40.4201

15
40.4686

14
40.4332

13
40.4332

12
40.4332

11
40.4332

10
40.4332

76
22.6091

106
43.596

36
8.9516

35
38.2352

30
38.6525

28
33.4745

27
19.6931

26
19.7588

25
19.5590

24
17.7510

22
19.9701

21
18.2512

52
20.7401

20
21.3328

19
40.0589

18
40.4626

17
40.4028

16
40.4201

15
40.4686

14
40.4332

13
40.4332

12
40.4332

11
40.4332

10
40.4332

77
38.3118

49
41.1250

36
8.9516

35
38.2352

30
38.6525

28
33.4745

27
19.6931

26
19.7588

25
19.5590

24
17.7510

22
19.9701

21
18.2512

52
20.7401

20
21.3328

19
40.0589

18
40.4626

17
40.4028

16
40.4201

15
40.4686

14
40.4332

13
40.4332

12
40.4332

11
40.4332

10
40.4332

76
22.6091

106
43.596

36
8.9516

35
38.2352

30
38.6525

28
33.4745

27
19.6931

26
19.7588

25
19.5590

24
17.7510

22
19.9701

21
18.2512

52
20.7401

20
21.3328

19
40.0589

18
40.4626

17
40.4028

16
40.4201

15
40.4686

14
40.4332

13
40.4332

12
40.4332

11
40.4332

10
40.4332

77
38.3118

49
41.1250

36
8.9516

35
38.2352

30
38.6525

28
33.4745

27
19.6931

26
19.7588

25
19.5590

24
17.7510

22
19.9701

21
18.2512

52
20.7401

20
21.3328

19
40.0589

18
40.4626

17
40.4028

16
40.4201

15
40.4686

14
40.4332

13
40.4332

12
40.4332

11
40.4332

10
40.4332

76
22.6091

106
43.596

36
8.9516

35
38.2352

30
38.6525

28
33.4745

27
19.6931

26
19.7588

25
19.5590

24
17.7510

22
19.9701

21
18.2512

52
20.7401

20
21.3328

19
40.0589

18
40.4626

17
40.4028

16
40.4201

15
40.4686

14
40.4332

13
40.4332

12
40.4332

11
40.4332

10
40.4332

77
38.3118

49
41.1250

36
8.9516

35
38.2352

30
38.6525

28
33.4745

27
19.6931

26
19.7588

25
19.5590

24
17.7510

22
19.9701

21
18.2512

52
20.7401

20
21.3328

19
40.0589

18
40.4626

17
40.4028

16
40.4201

15
40.4686

14
40.4332

13
40.4332

12
40.4332

11
40.4332

10
40.4332

76
22.6091

106
43.596

36
8.9516

35
38.2352

30
38.6525

28
33.4745

27
19.6931

26
19.7588

25
19.5590

24
17.7510

22
19.9701

21
18.2512

52
20.7401

20
21.3