

New Main.	
2nd Main	
Existing Main	
Incorporated	
Main, Existing, reserved to Town	

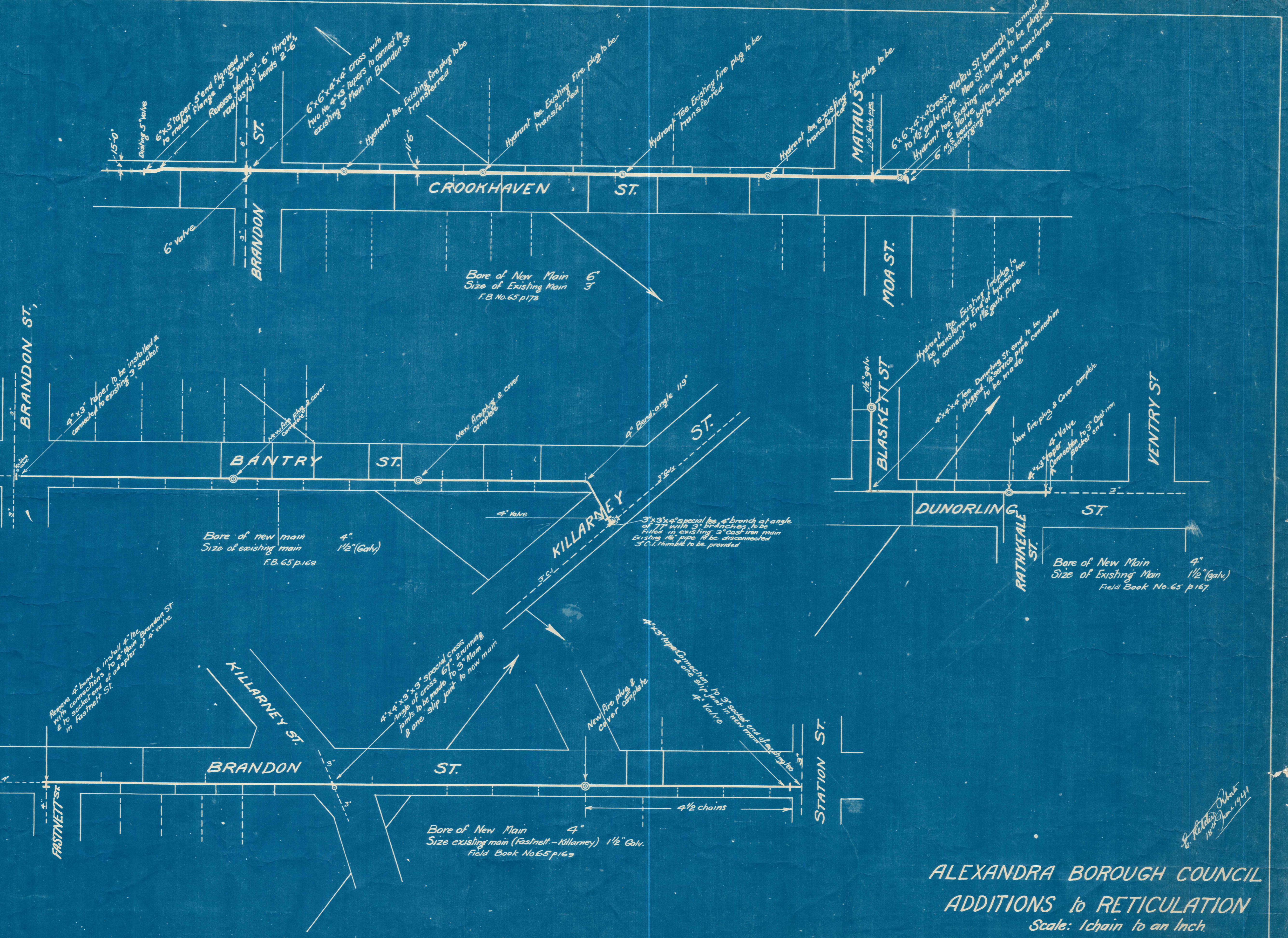
**ALEXANDRA BOROUGH COUNCIL  
WATER RETICULATION**

PROPOSED FIRST INSTALMENT OF COMPLETE PROPOSALS

SHEWN ON PLAN 895-3

Scale: 4 cts to 1 inch.

*E. H. Roberts  
15th July 1940*

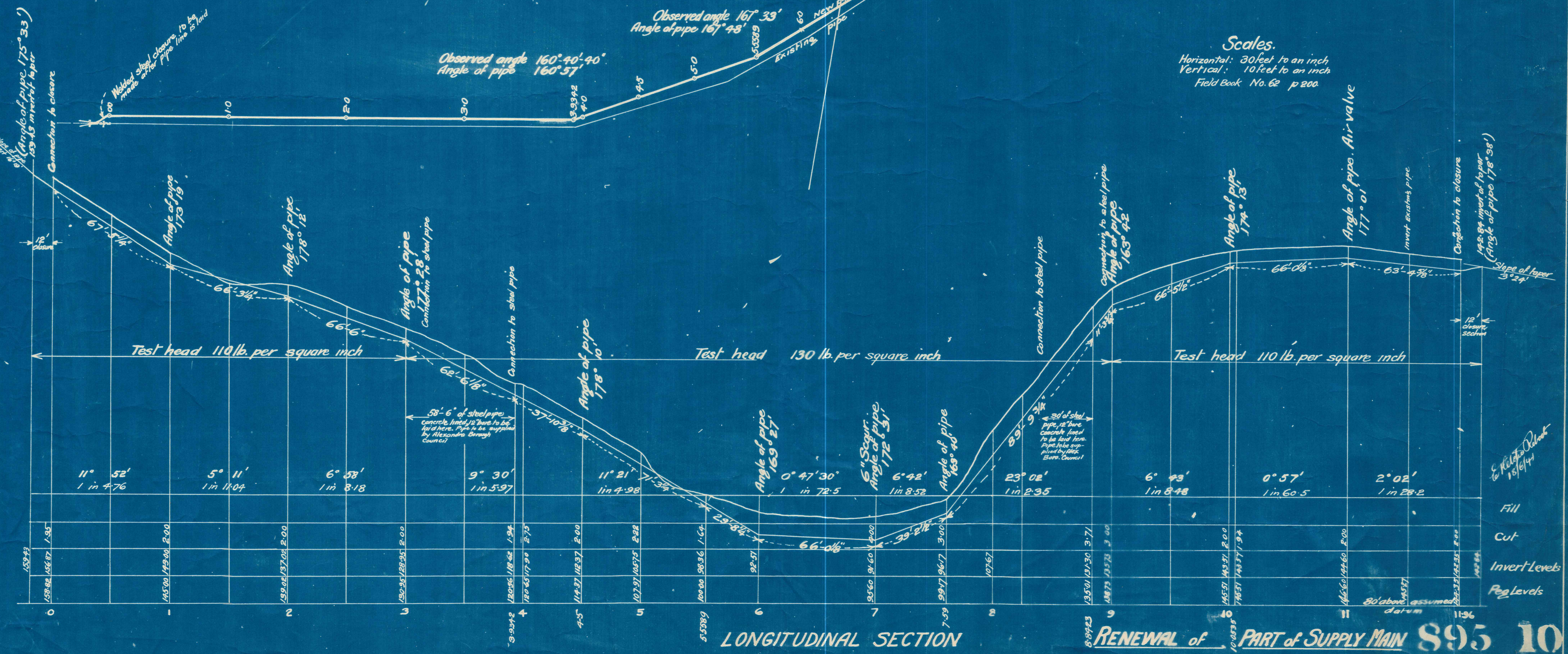
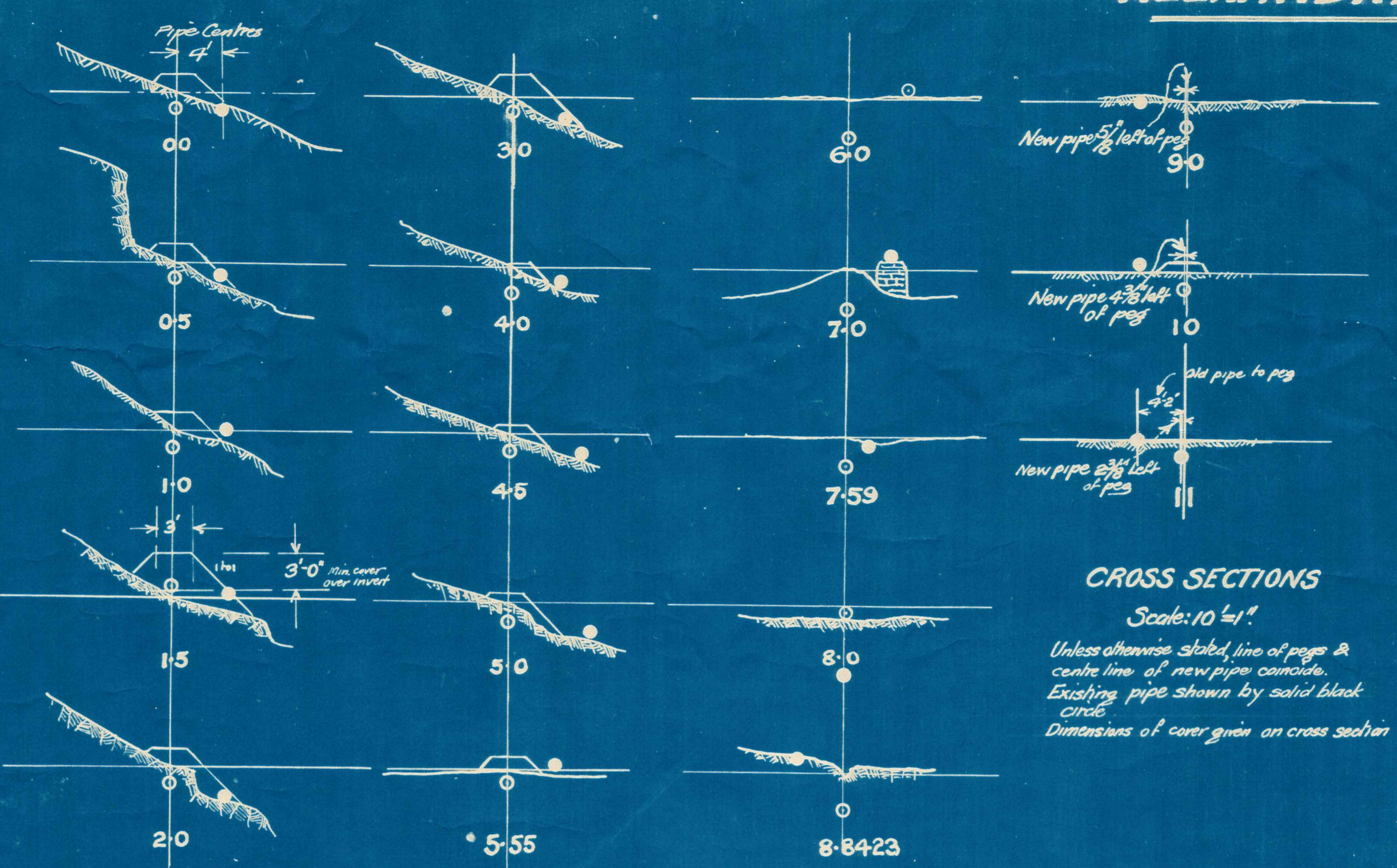


*S. P. O'Connell  
15th June 1911*

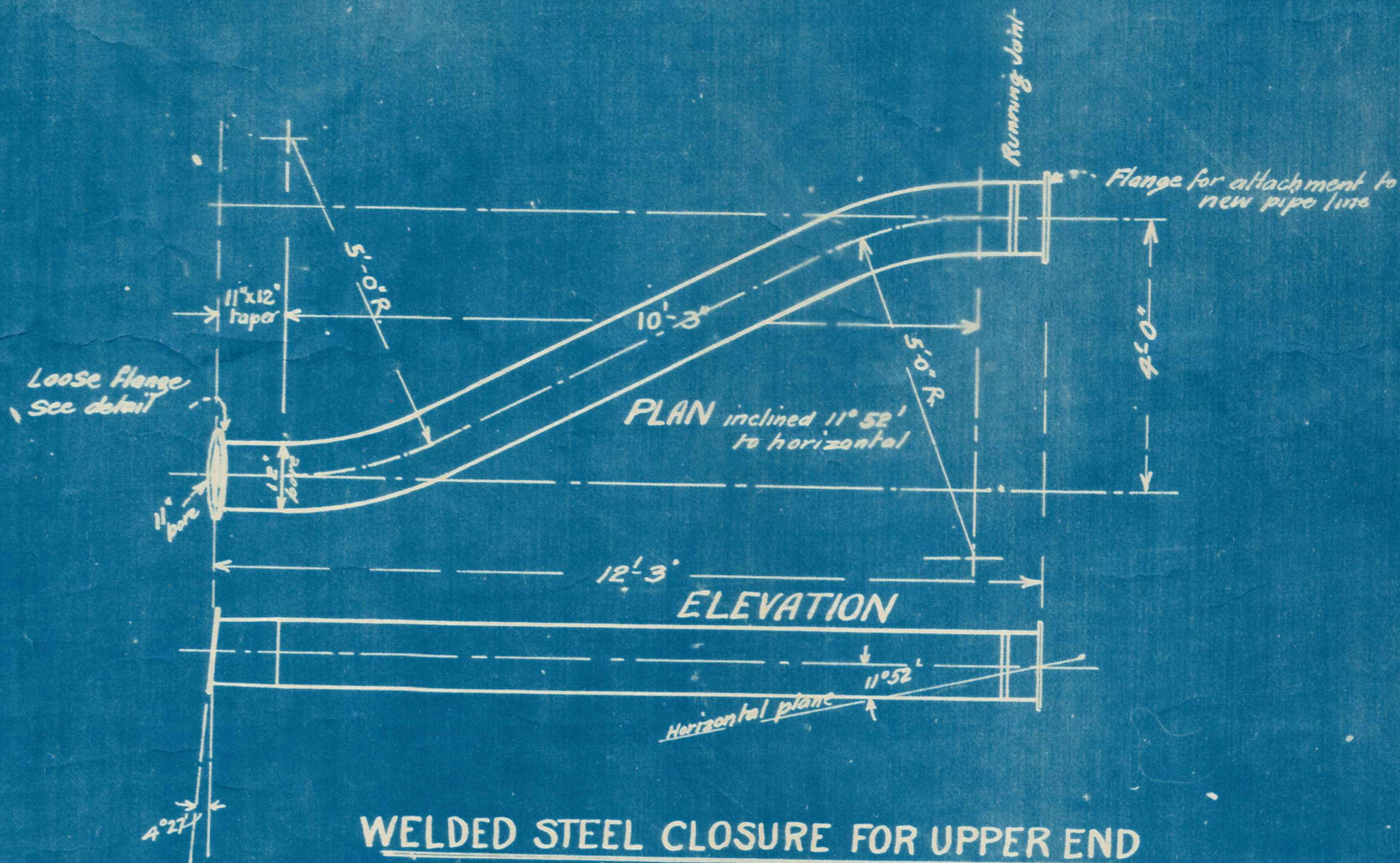
ALEXANDRA BOROUGH COUNCIL  
 ADDITIONS to RETICULATION  
 Scale: 1 chain to an Inch.

895-7

# ALEXANDRA BOROUGH COUNCIL

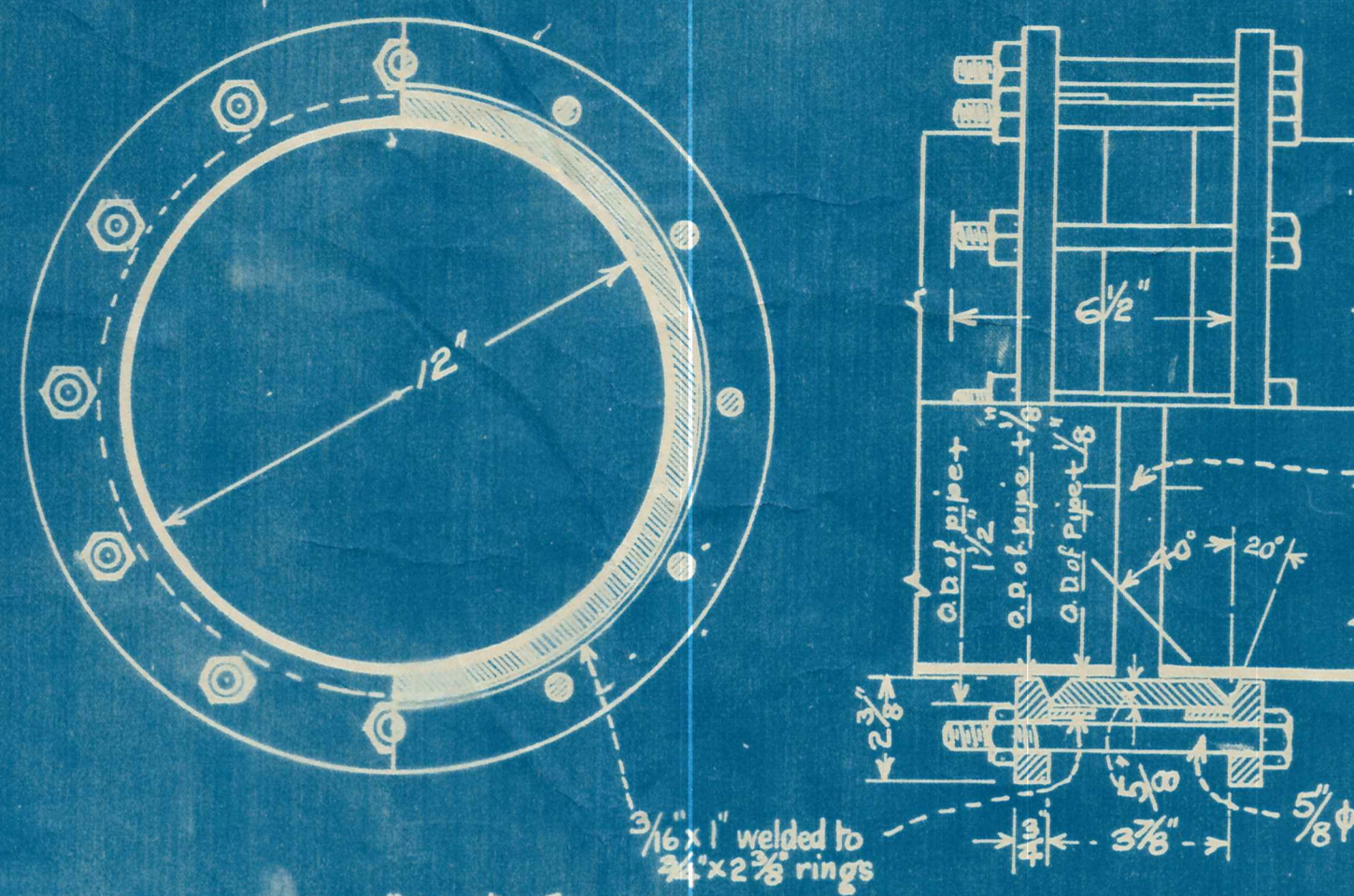


# ALEXANDRA BOROUGH COUNCIL



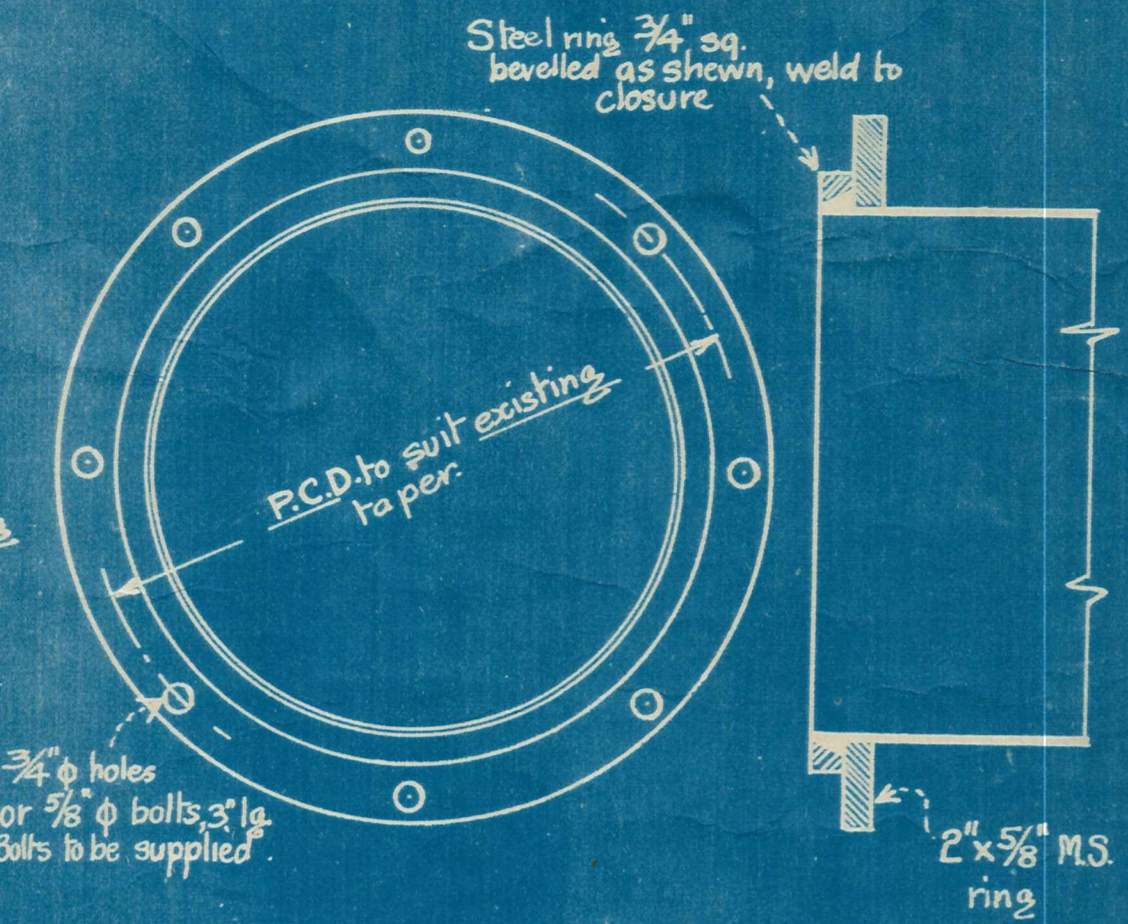
**WELDED STEEL CLOSURE FOR UPPER END**

10 Gauge Steel, 12" bore.  
Scale:  $\frac{1}{2}'' = 1'$   
Dimensions are approximate. Full details will be supplied before manufacture.

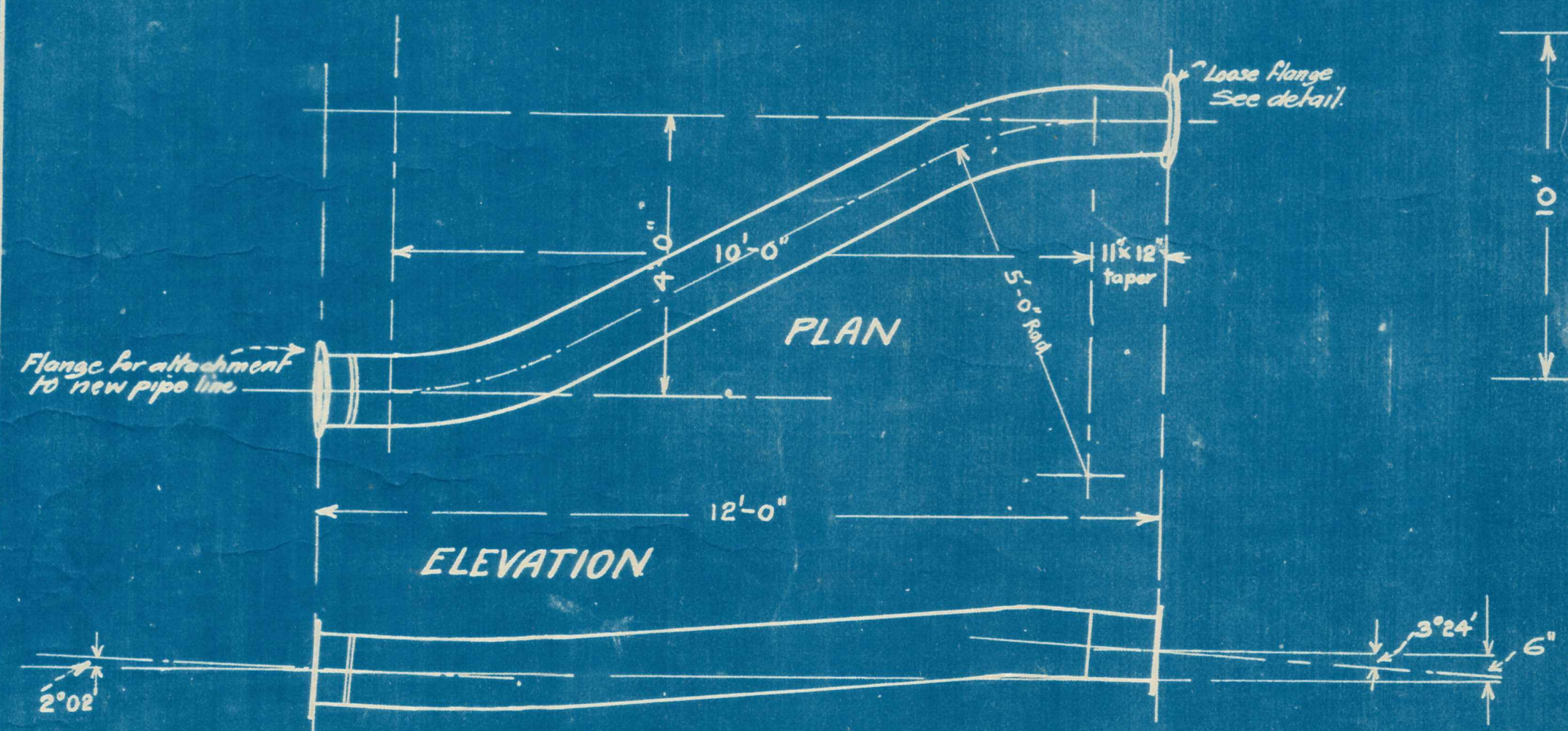


**12" RUNNING JOINT FOR CLOSURE**

Scale: 3" = 1'

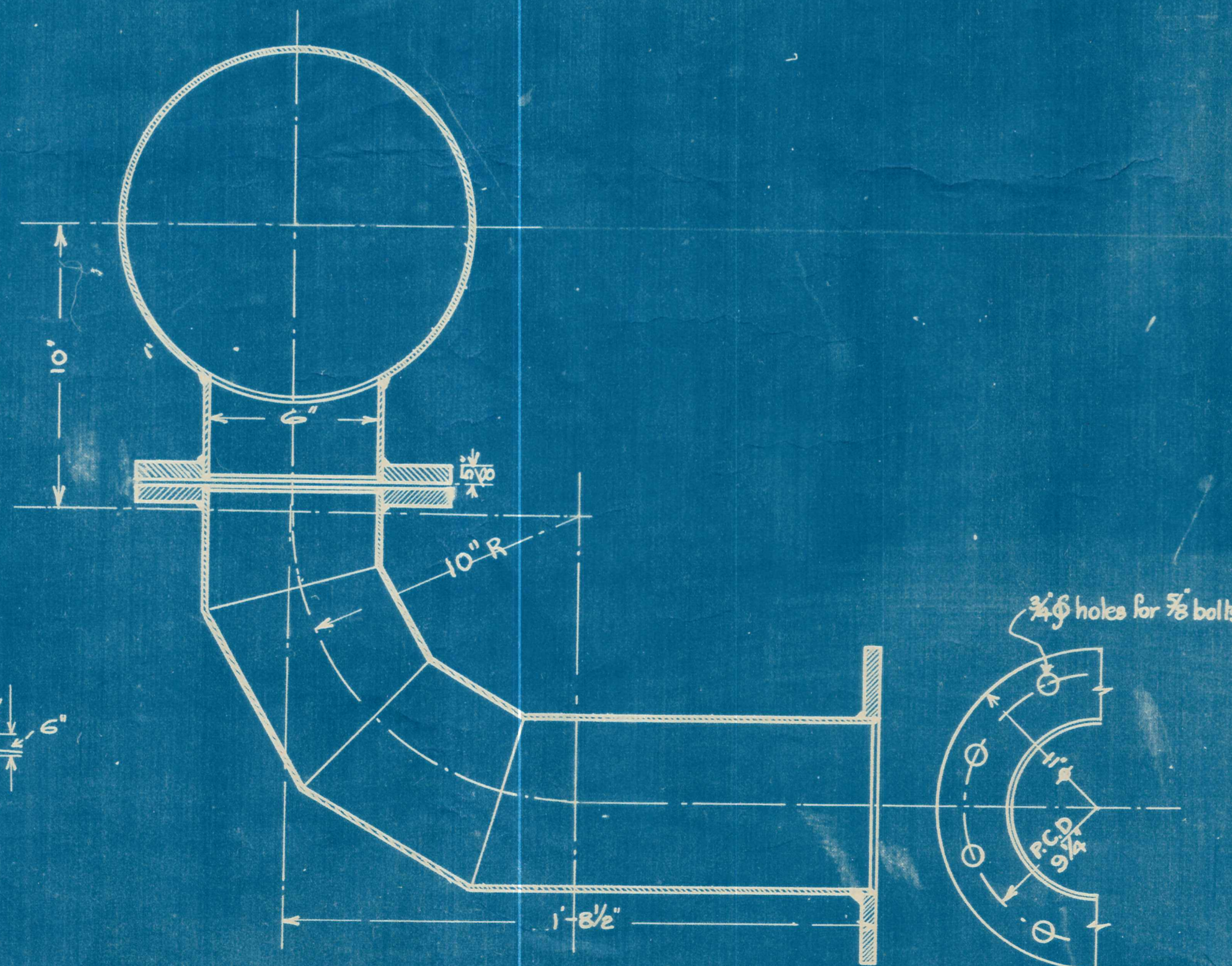


**LOOSE RING JOINT FOR CLOSURE**



**WELDED STEEL CLOSURE FOR LOWER END**

10 Gauge Steel, 12" bore.  
Scale:  $\frac{1}{2}'' = 1'$   
Dimensions are approximate. Full details will be supplied before manufacture.  
Not more than two bends to be used.

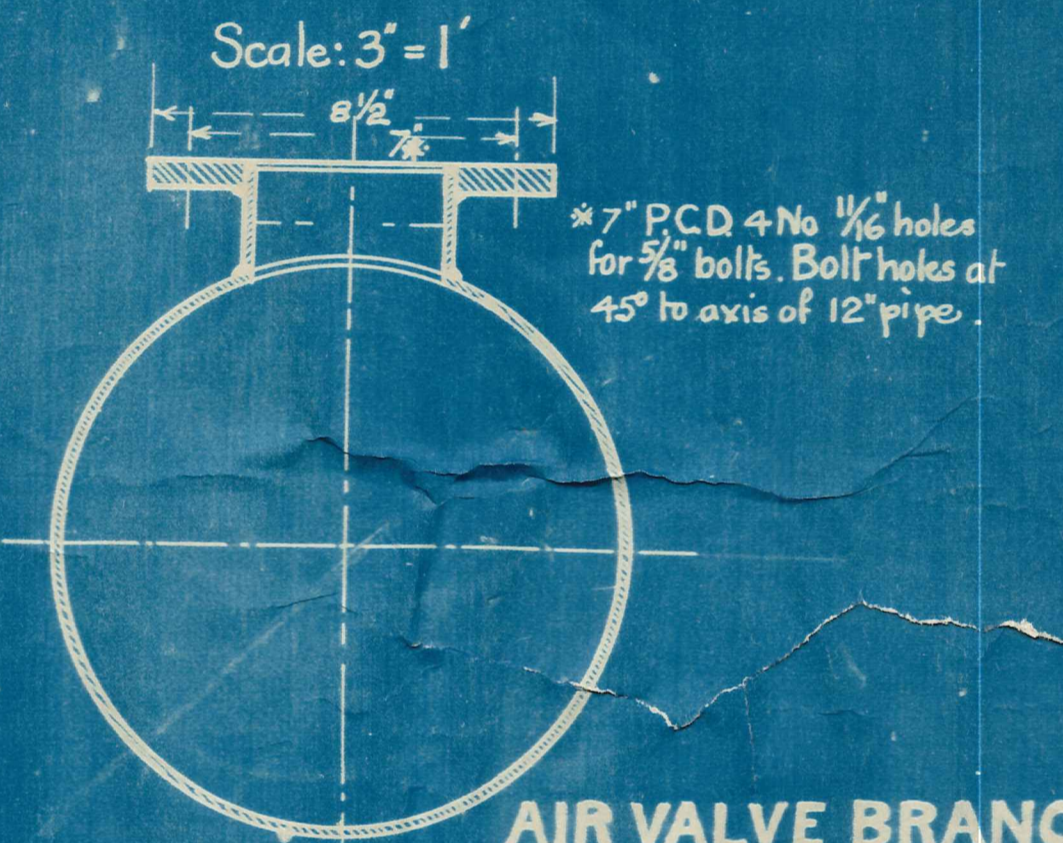


**SCOUR VALVE BRANCH**

to be attached to 172° 31' bend at lowest position. Note: This cross section is looking towards intake.

Scale: 3" = 1'

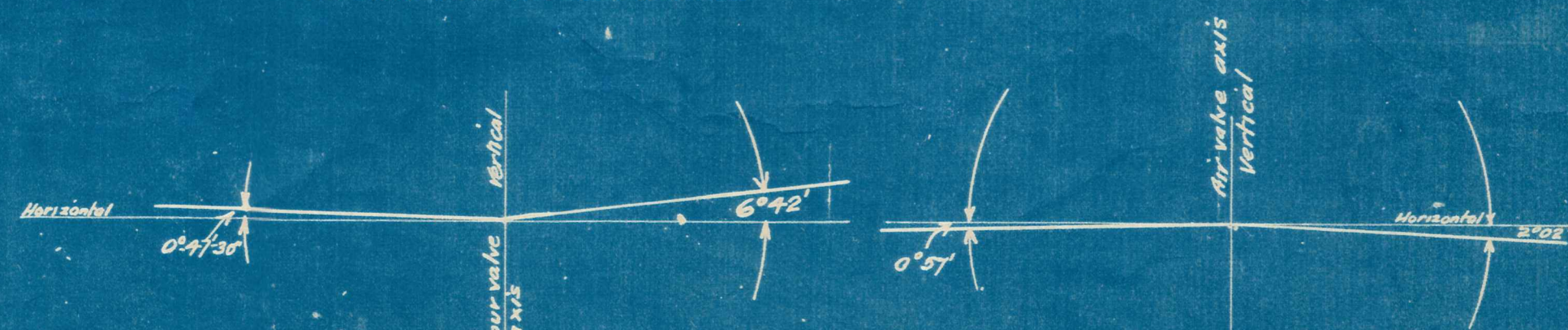
Dwg. is to be regarded as typical of welded mild steel construction of specials which, in permanent part of pipe line are to be of  $\frac{1}{4}''$  plate. If cast iron specials are to be supplied, general dimensions of this special to be as shown above. Full details of all specials to be supplied in all cases.



**AIR VALVE BRANCH**

to be attached to 177° 01' bend at highest point

Air valve to be double pattern with isolating valve, 4" phi inlet. See Blakeborough catalogue No. 60 Fig. 2627. Full details to be supplied.



**DIAGRAM SHOWING ANGLES at SCOUR & AIR VALVES**

- 4 No. steel joint rings  $\frac{1}{2}'' \times \frac{1}{8}''$  wrapped with miners' felt to be supplied with closures
- 4 No.  $\frac{3}{4}''$  phi rubber rings for running joints to be supplied.
- All cast iron specials to be painted two coats approved bitumastic paint.
- All steel specials to be coated with approved tar-asphalt composition by dipping.
- All bolts to be supplied.
- All jointing material to be supplied.
- Test pressure: 130 lbs. per sq. in.

In welded steel 12" bends, deflection at any joint not to exceed 15°. Bends shown on plan on sheet 895-10 to have loose ring joints both ends. Bends shown on long. sec. on sheet 895-10 to have the plane in which vertical angles are measured, vertical when bends are bolted in position.

Concrete lined steel pipe supplied by Alexandra Borough Council:-

Flanges	$\frac{3}{8}''$ plate.
P.C.D.	1'-4".
No. of holes	12.
Bore of holes	$\frac{7}{8}''$ .
Bolts & joint rings	Supplied.

**RENEWAL of PART of SUPPLY MAIN**

895-11

*Blakeborough 15/6/11*