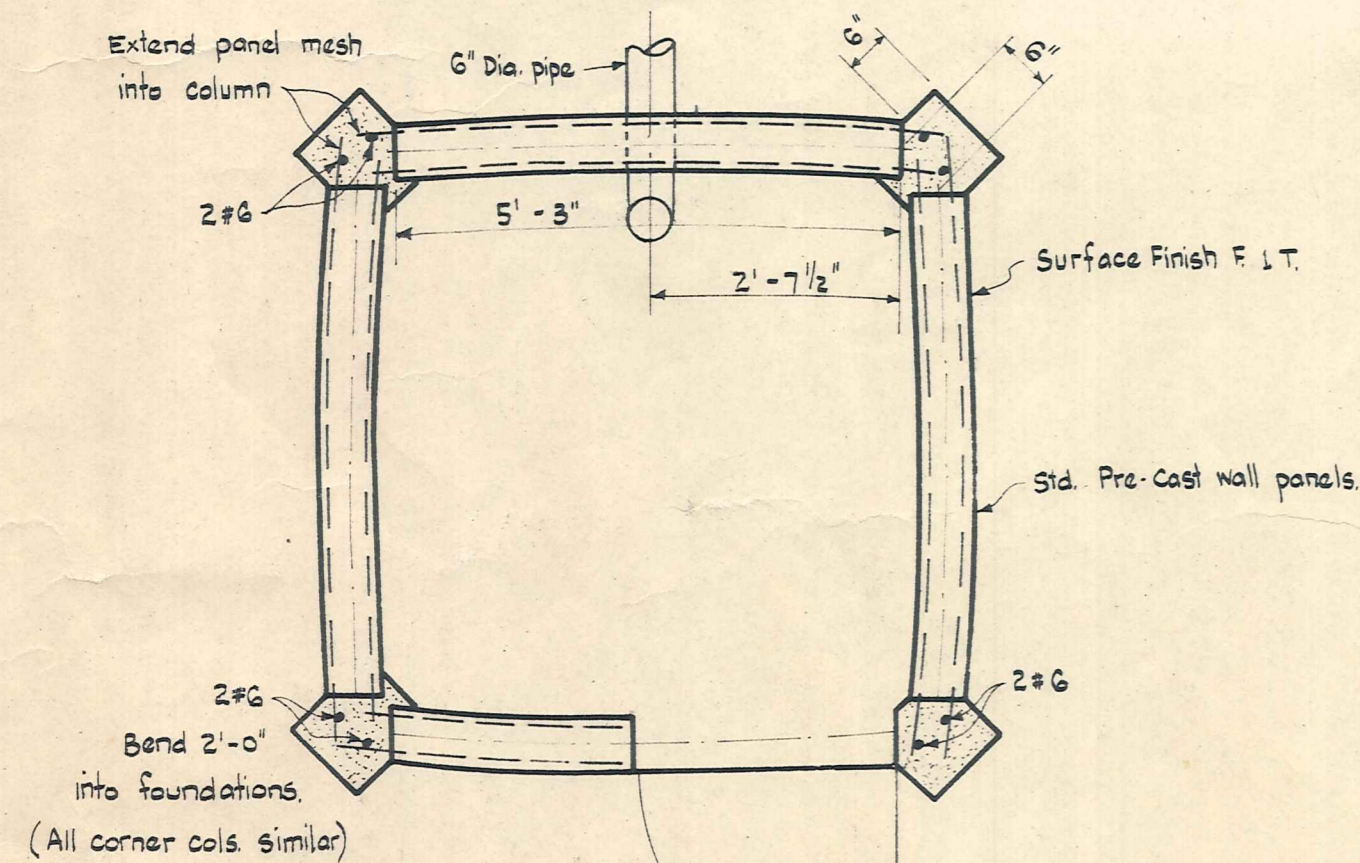


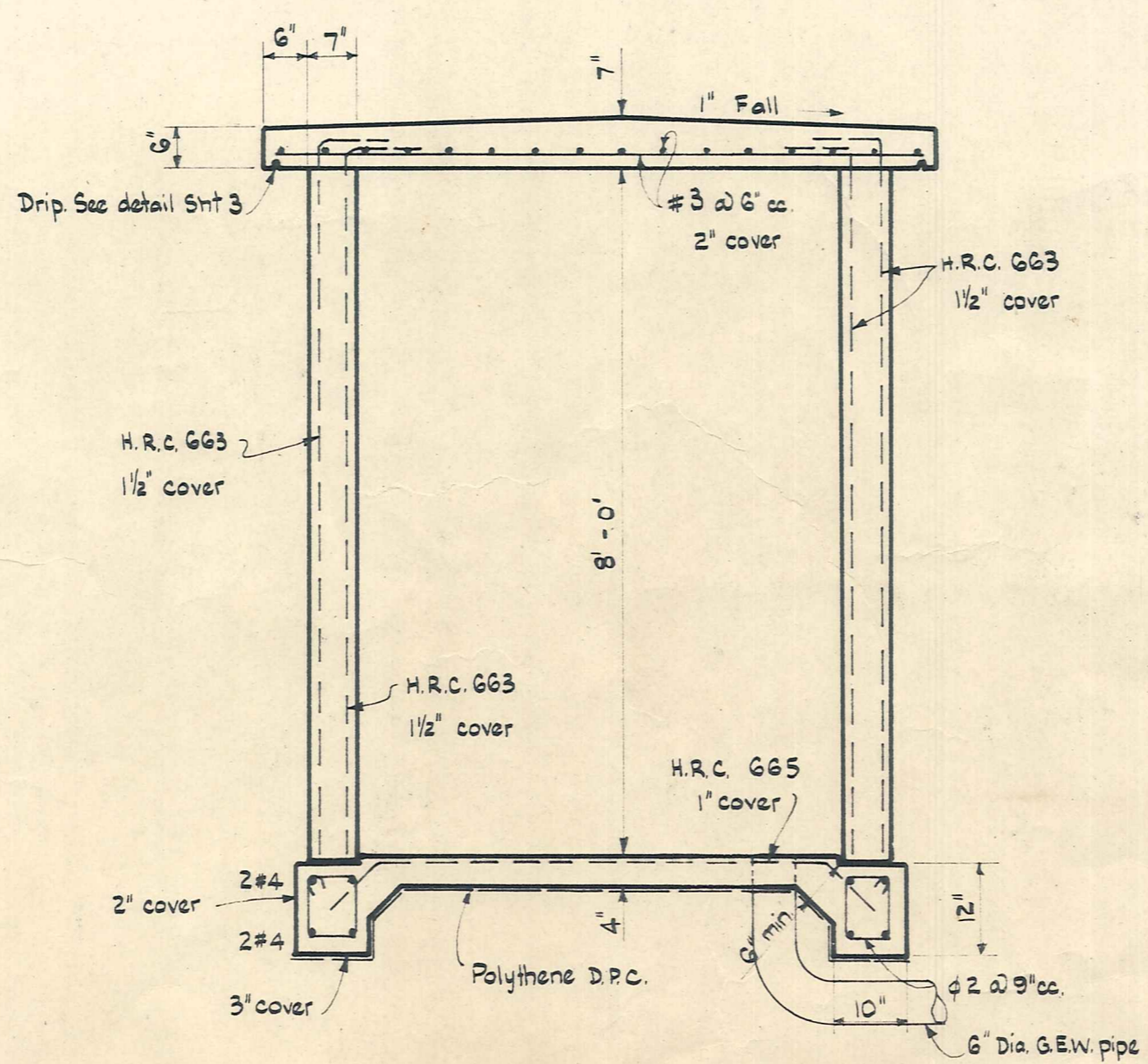
SITE PLAN



PLAN

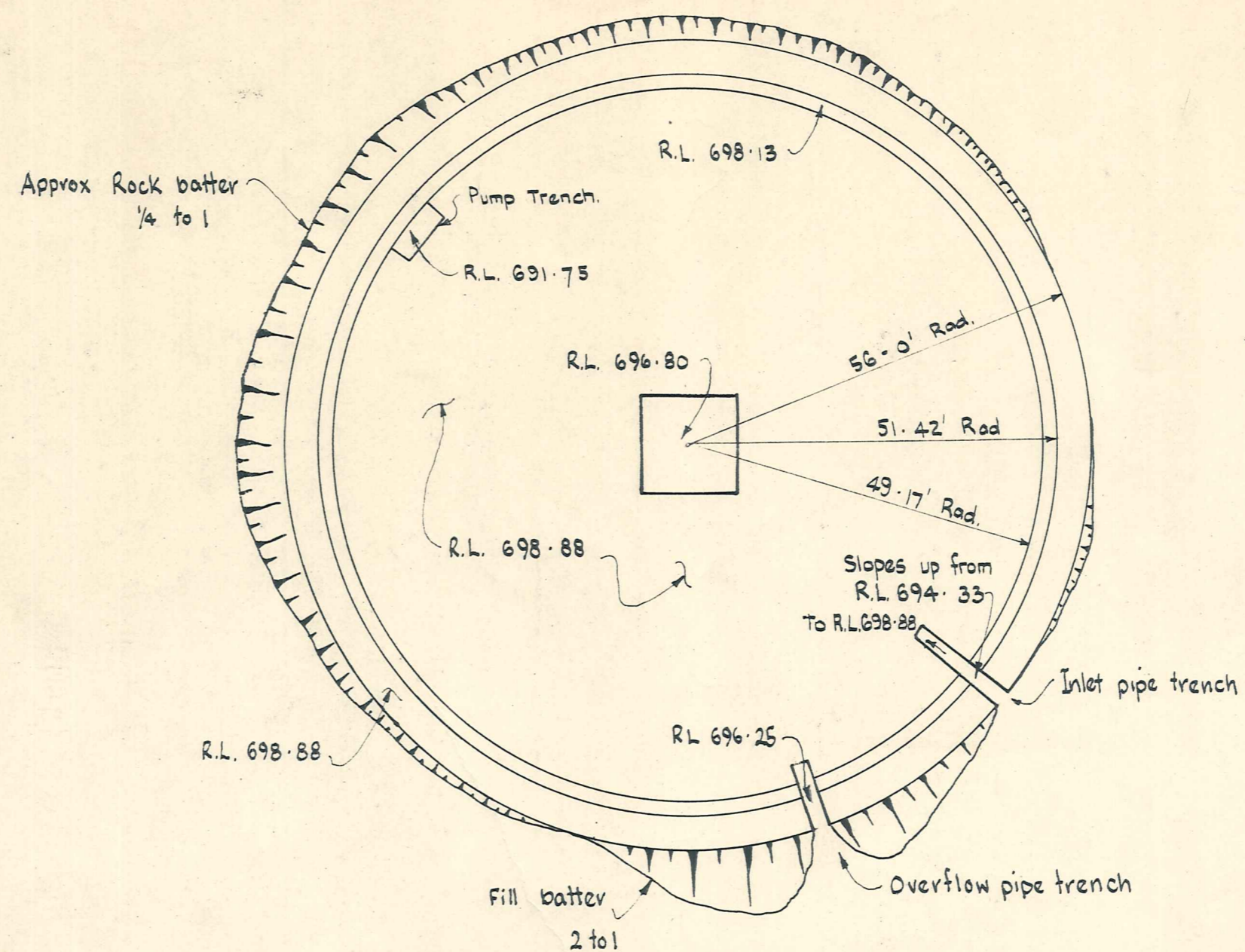
Scale: 1/2" to 1'-0"

**PRELIMINARY PLANS
NOT FOR CONSTRUCTION**



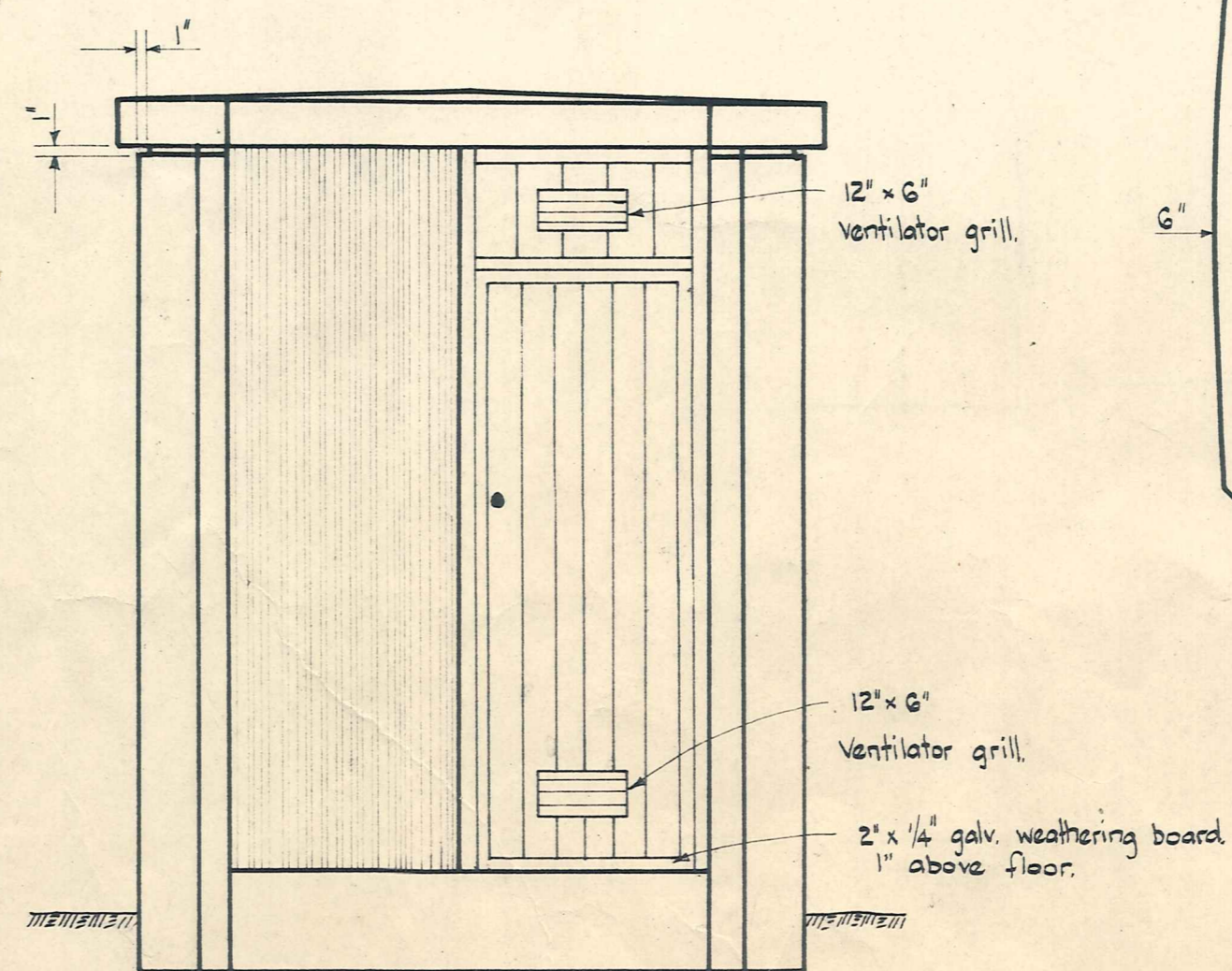
TYPICAL SECTION

Scale: 1/2" to 1'-0"



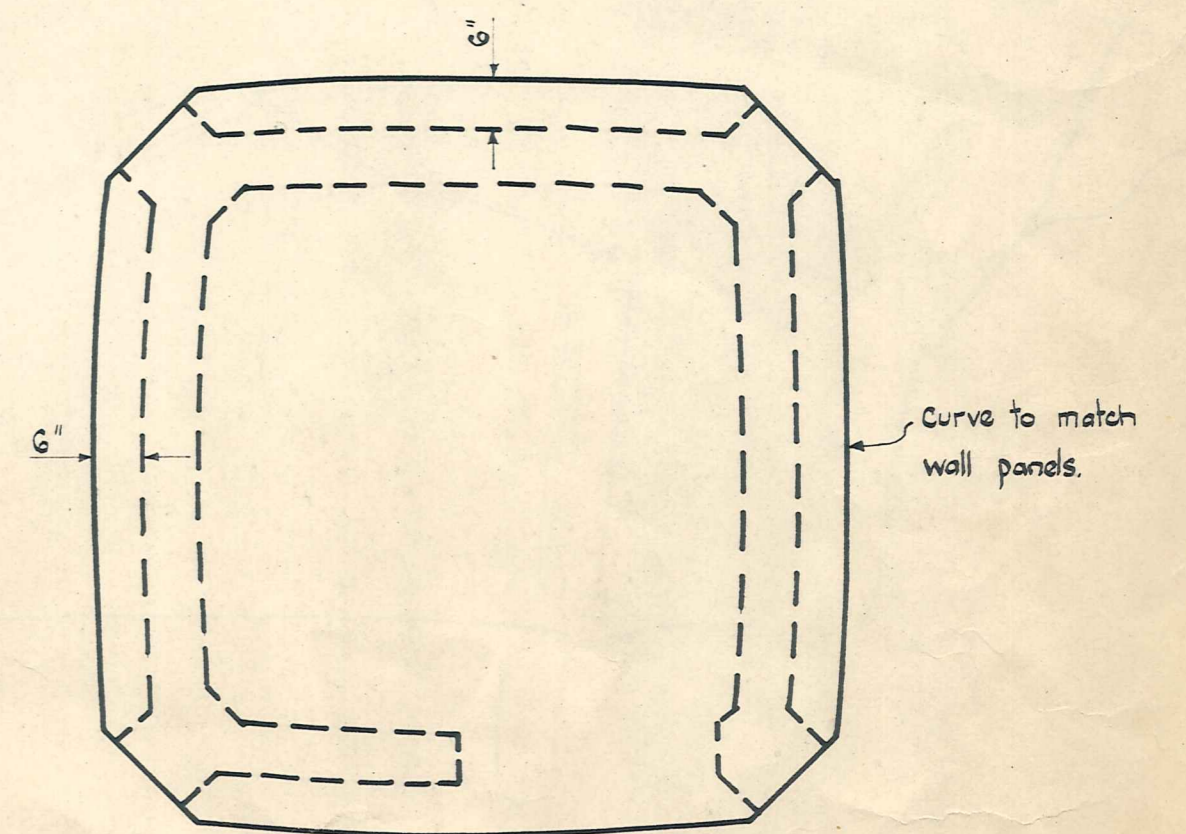
EXCAVATION PLAN

Scale 20ft to 1"



FRONT ELEVATION

Scale: 1/2" to 1'-0"



ROOF PLAN

Scale: 1/2" to 1'-0"

**PRELIMINARY PLANS
NOT FOR CONSTRUCTION**

232
232

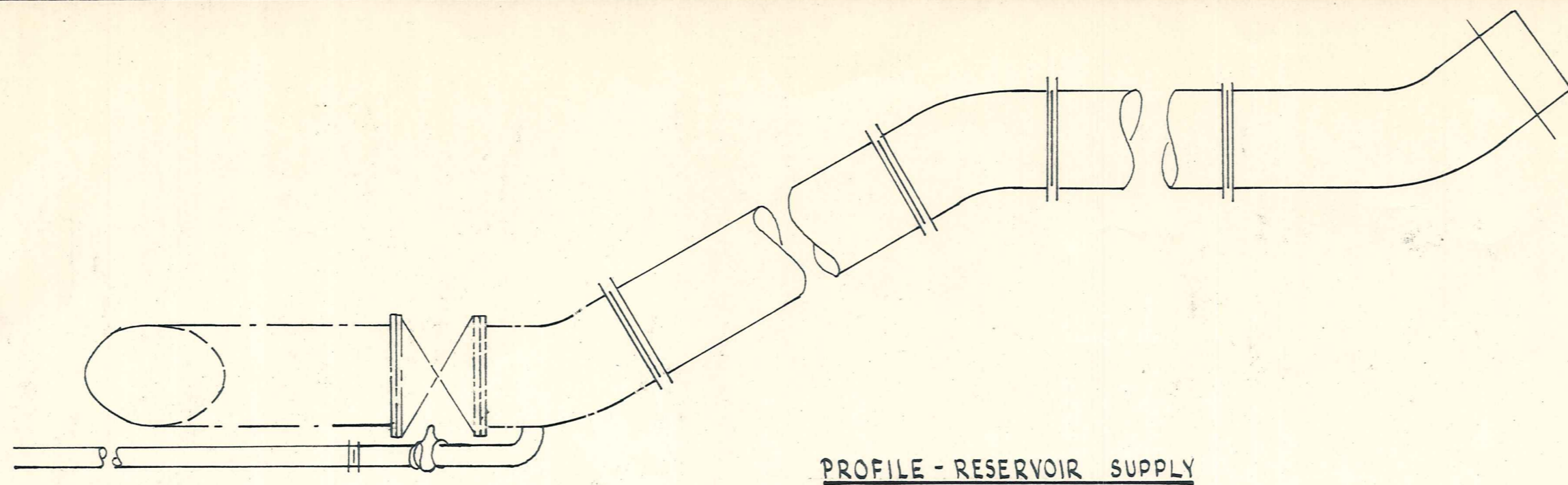
ALEXANDRA
BOROUGH COUNCIL

ALEXANDRA WATER RESERVOIR

AMENDMENTS					NAME	DATE
No.	By	Date	Description	Apprd.		
					Surveyed G.J.D. R.N.A.	
					Drawn B. Chamberlain	
					Traced A. Sim	7/69
					Checked	
					Approved	

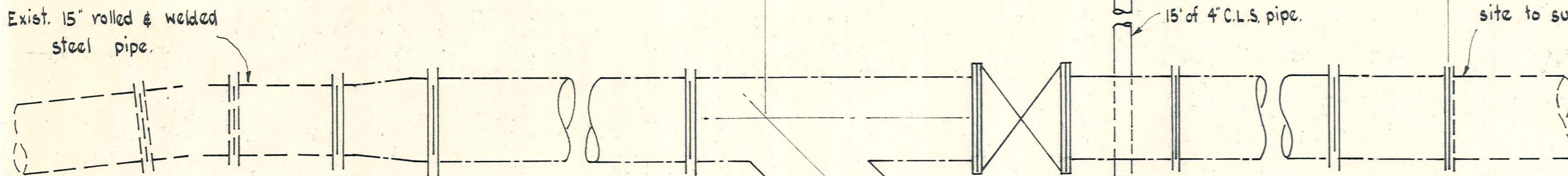
DUFFILL, WATTS & KING
CONSULTING CIVIL & STRUCTURAL ENGINEERS
DUNEDIN & INVERCARGILL N.Z.

File
L.Bk. 6038
F.Bk.
Sheet 1 of 5 Sheets

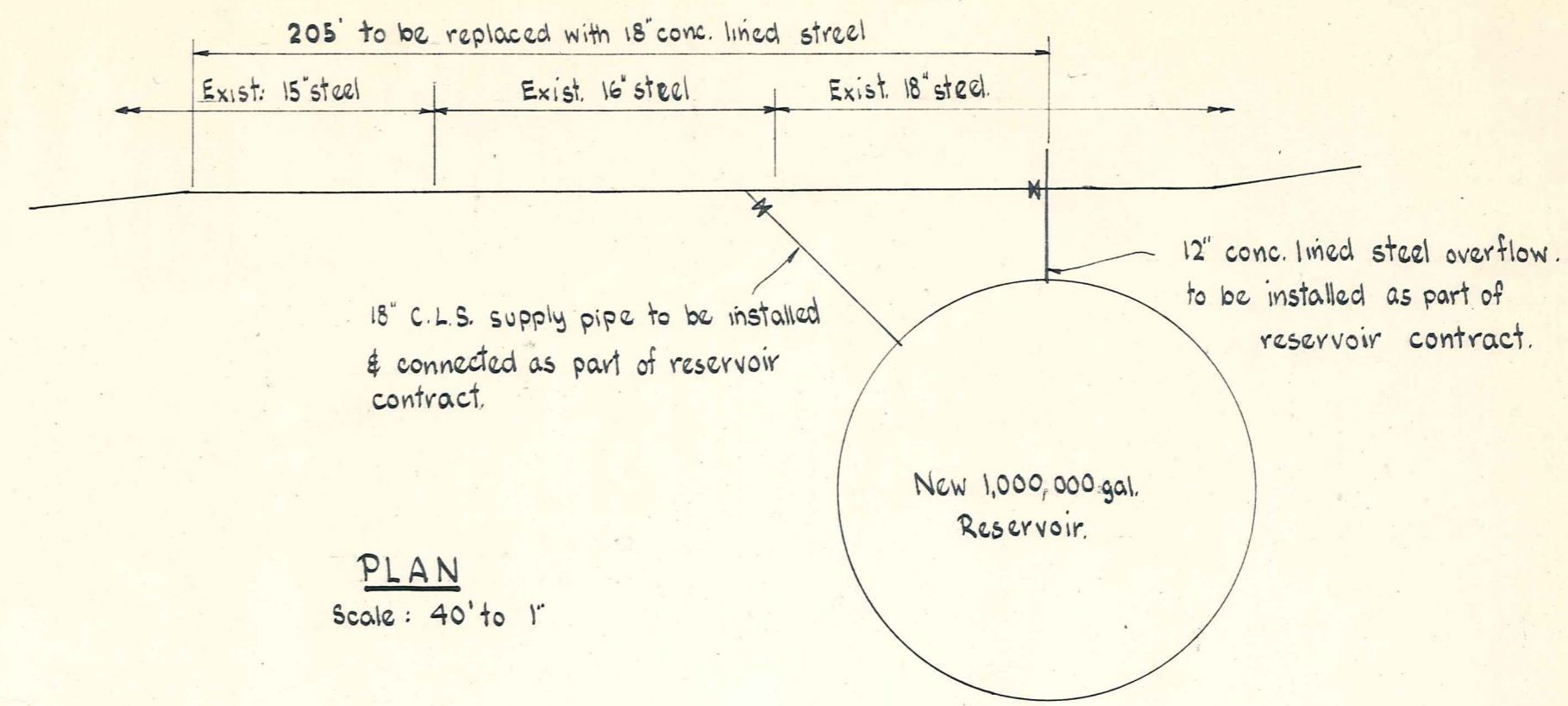


PROFILE - RESERVOIR SUPPLY

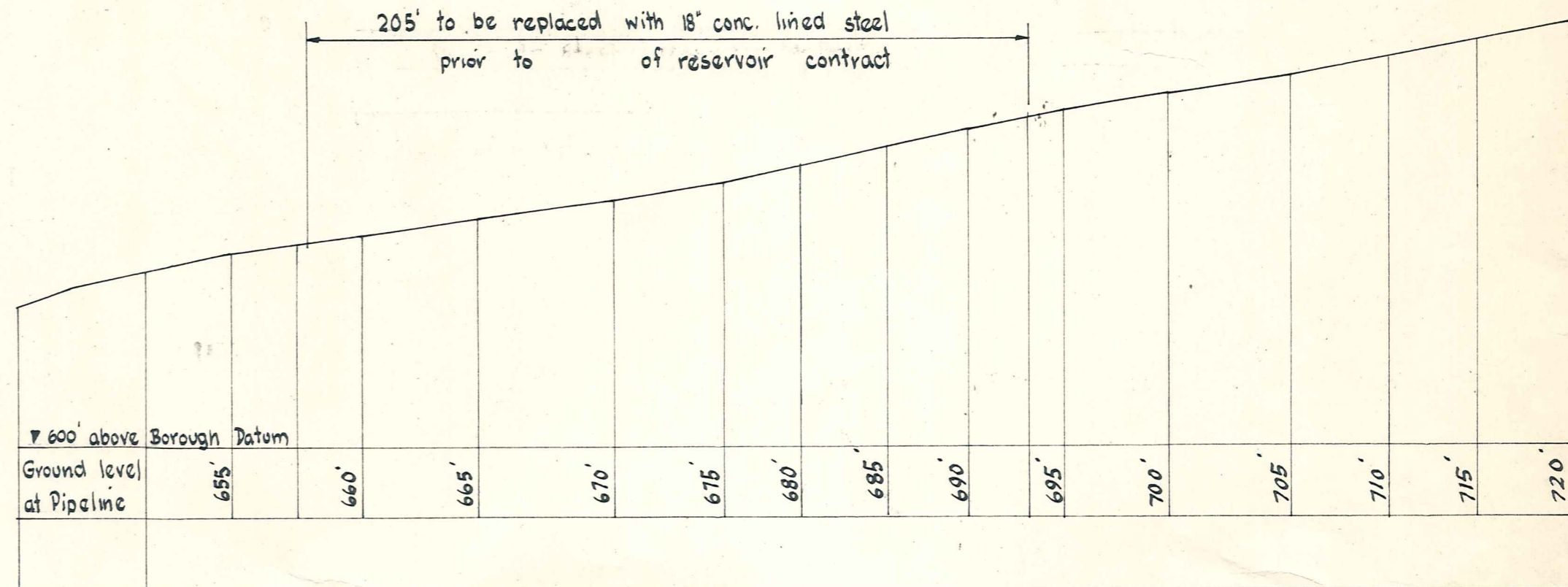
Reducer - 18" C.L.S. to 15" steel O.D. 15 1/2"



Exist. 18" bitumen wrapped steel pipe. Drill flang adaptor on site to suit.

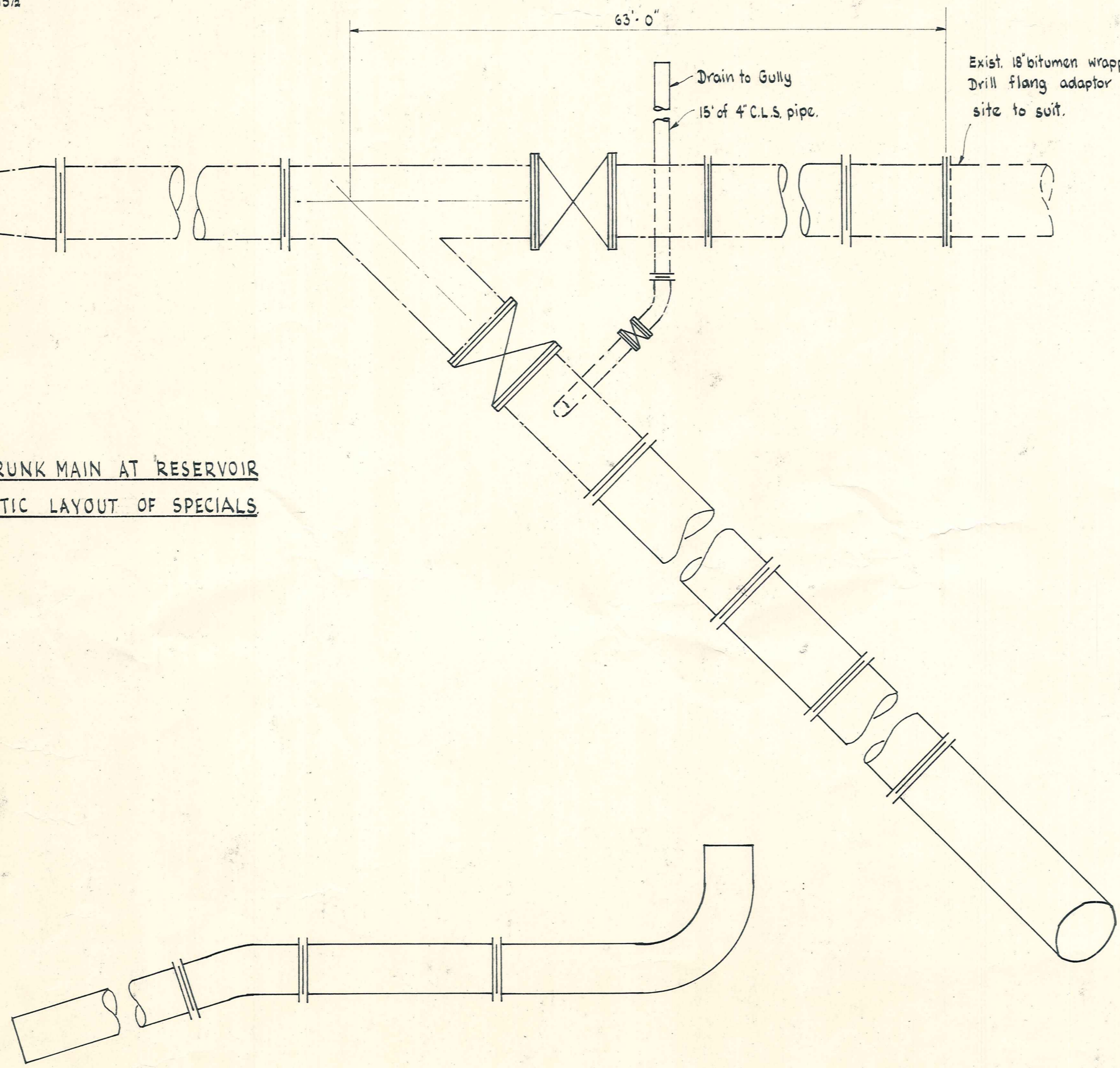


PLAN
Scale: 40' to 1"

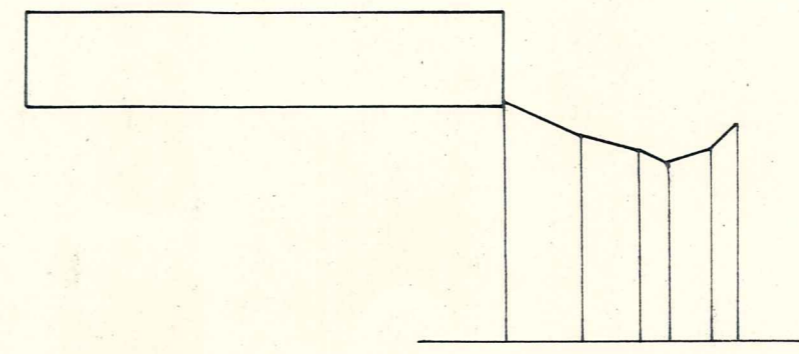


LONG SECTION
Scale: 40' to 1" horiz. & vert

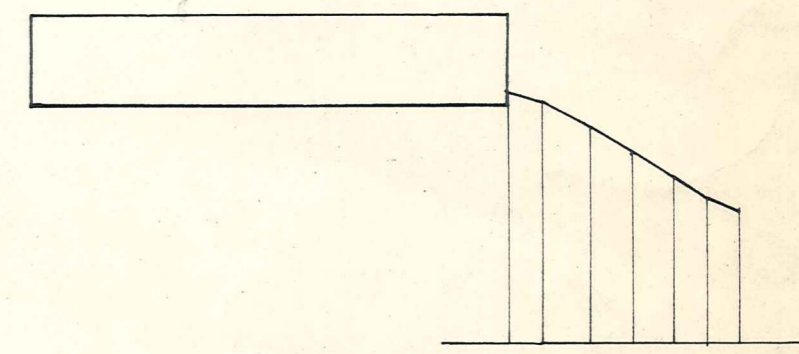
18" DIA. TRUNK MAIN AT RESERVOIR
DIAGRAMATIC LAYOUT OF SPECIALS



PROFILE - RESERVOIR OVERFLOW



LONG SECTION
12" C.L.S. OVERFLOW
Scale 40' to 1"



LONG SECTION
18" C.L.S. SUPPLY PIPE
Scale 40' to 1"

PRELIMINARY PLANS
NOT FOR CONSTRUCTION

PRELIMINARY PLANS
NOT FOR CONSTRUCTION

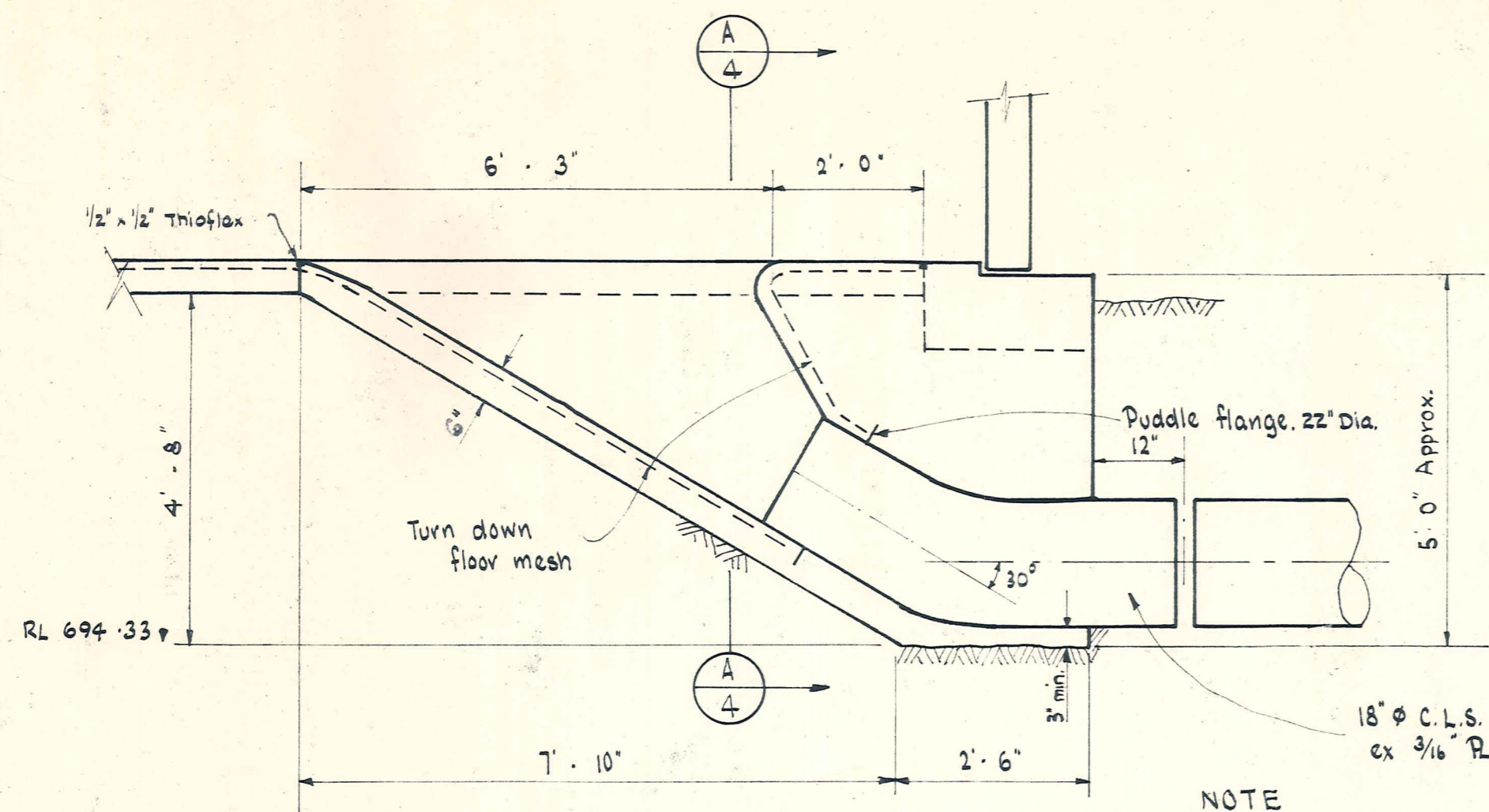
ALEXANDRA
BOROUGH COUNCIL

ALEXANDRA WATER RESERVOIR

AMENDMENTS					NAME	DATE
No.	By	Date	Description	Apprd.		
					G. Dillon	
					A. Sim	

DUFFILL, WATTS & KING
CONSULTING CIVIL & STRUCTURAL ENGINEERS
DUNEDIN & INVERCARGILL N.Z.

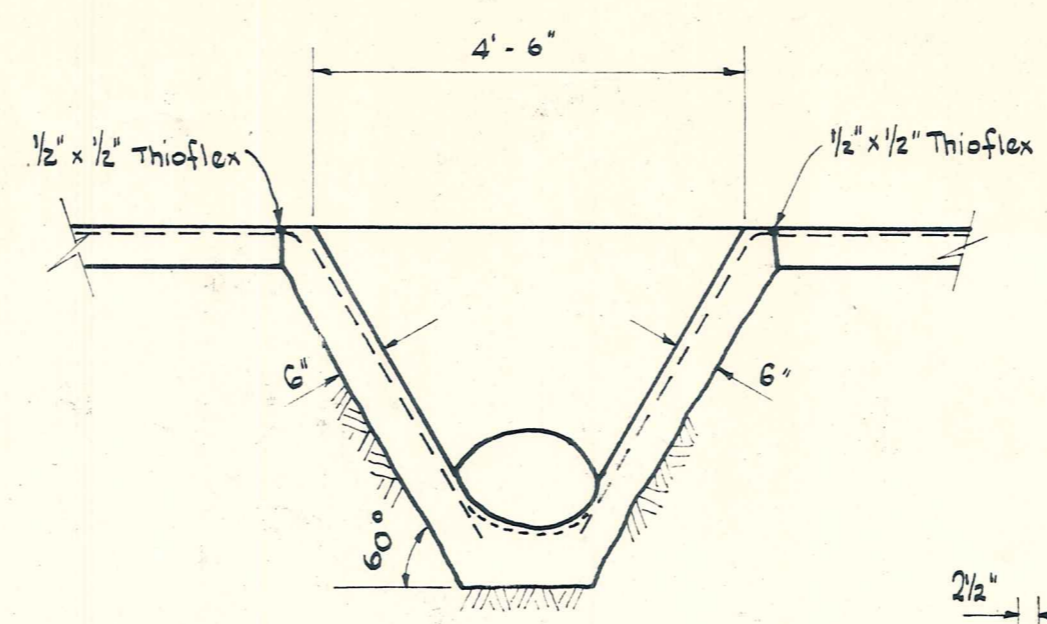
File	JOB No.
L. Bk.	6038
F. Bk.	
Sheet 2 of 5 Sheets	



INLET PIPE

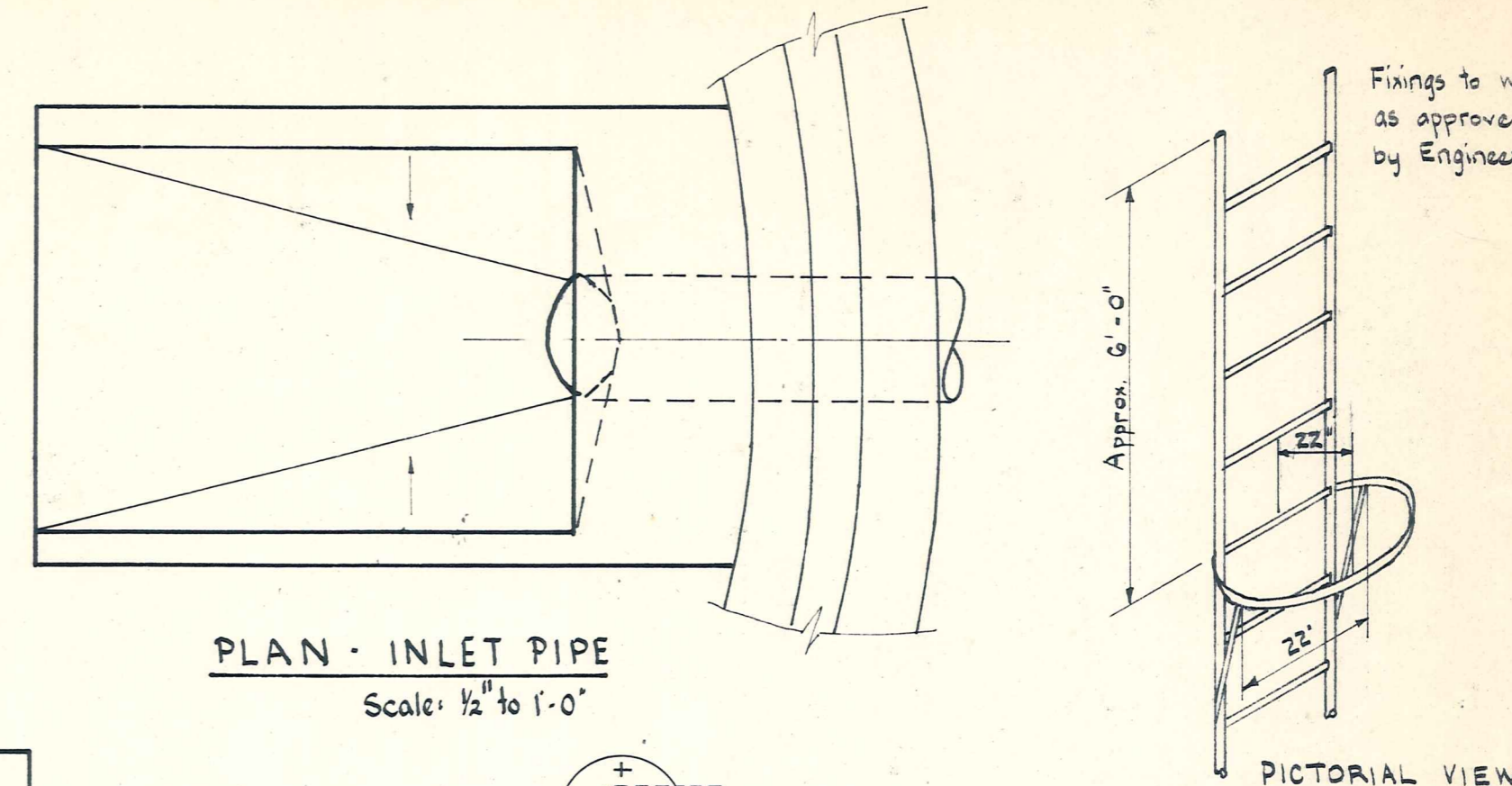
Scale: 1/2" to 1'-0"

NOTE
Contractor to ensure prior to installation that all pipe work is of the same O.D. and that all parts fit inlet pipe. Class C-300 ft working pressure concrete lined steel (see sheet 2 for pipe work details).



FLANGE DETAIL

Scale: 1/2" to 1'-0"



PLAN - INLET PIPE

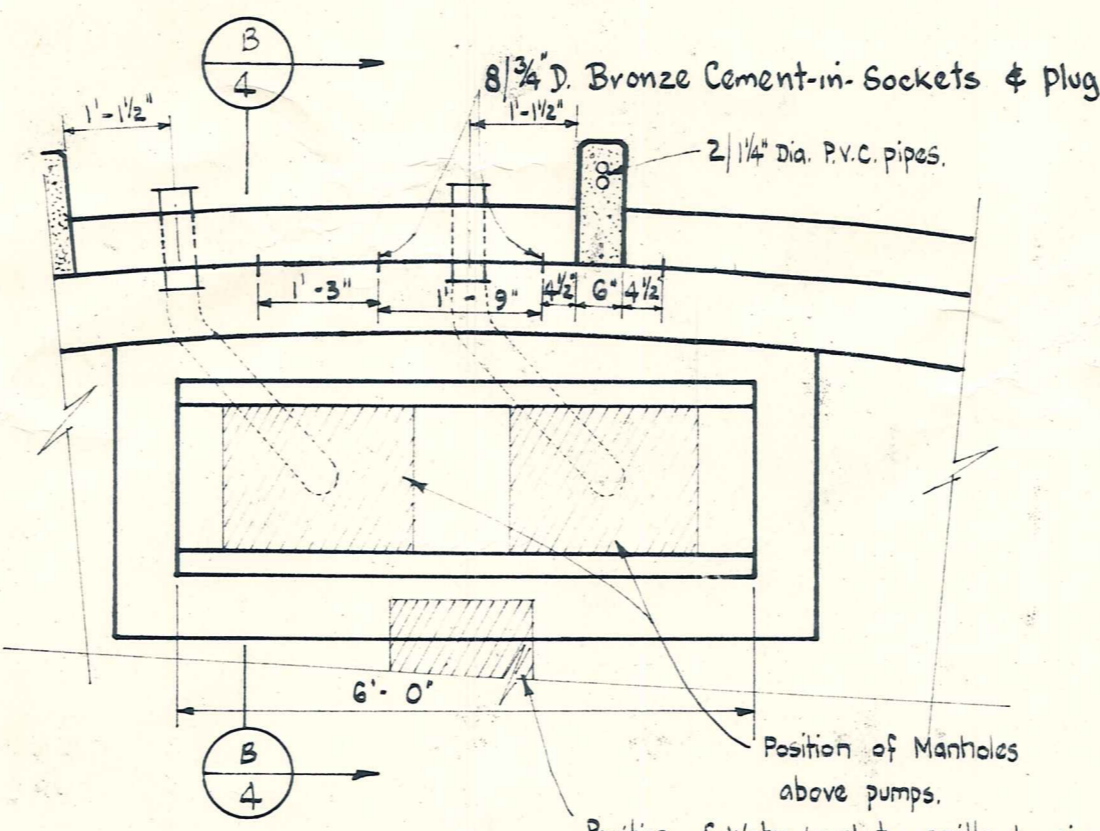
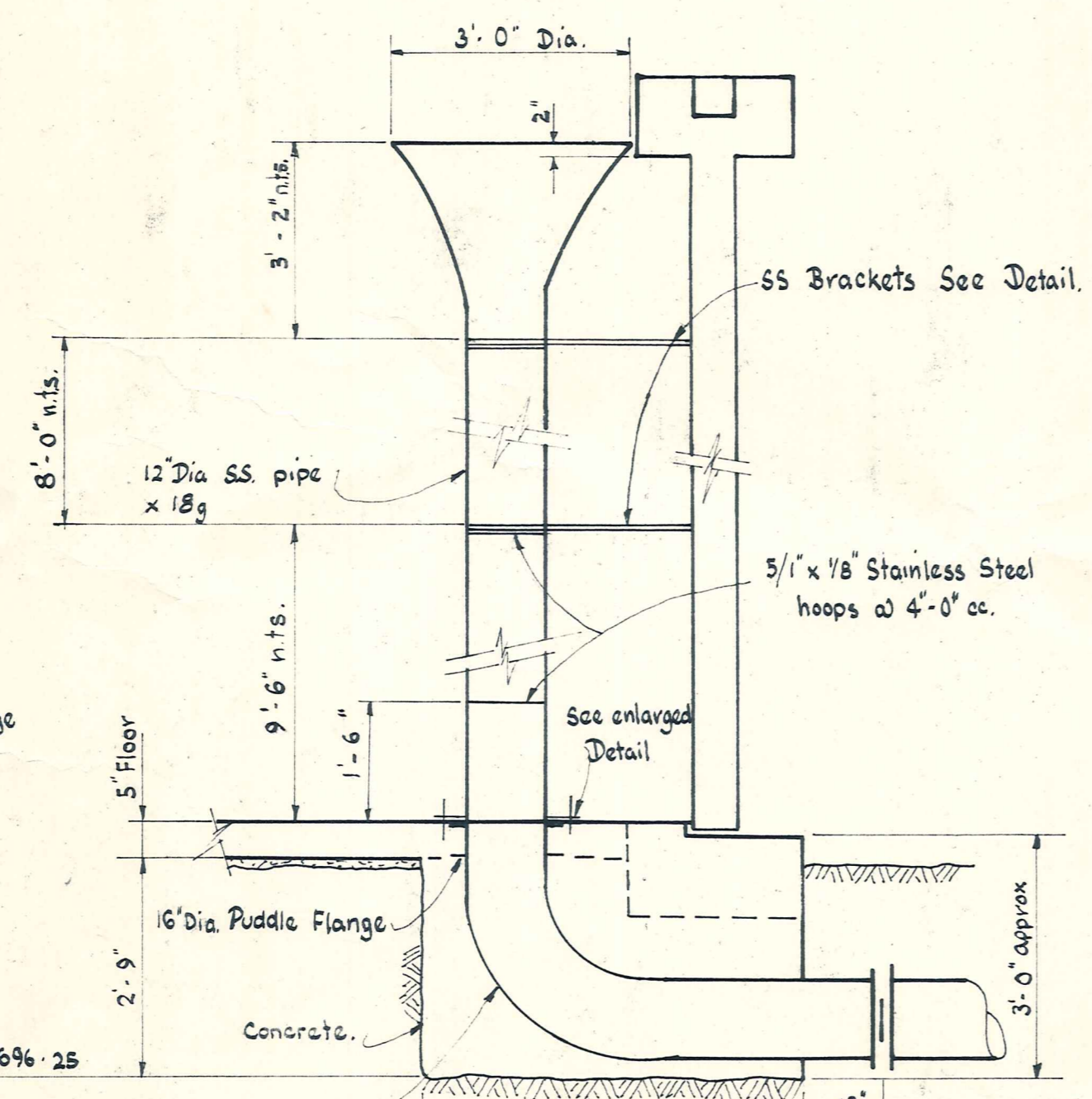
Scale: 1/2" to 1'-0"

PICTORIAL VIEW

Approx. 6'-0"

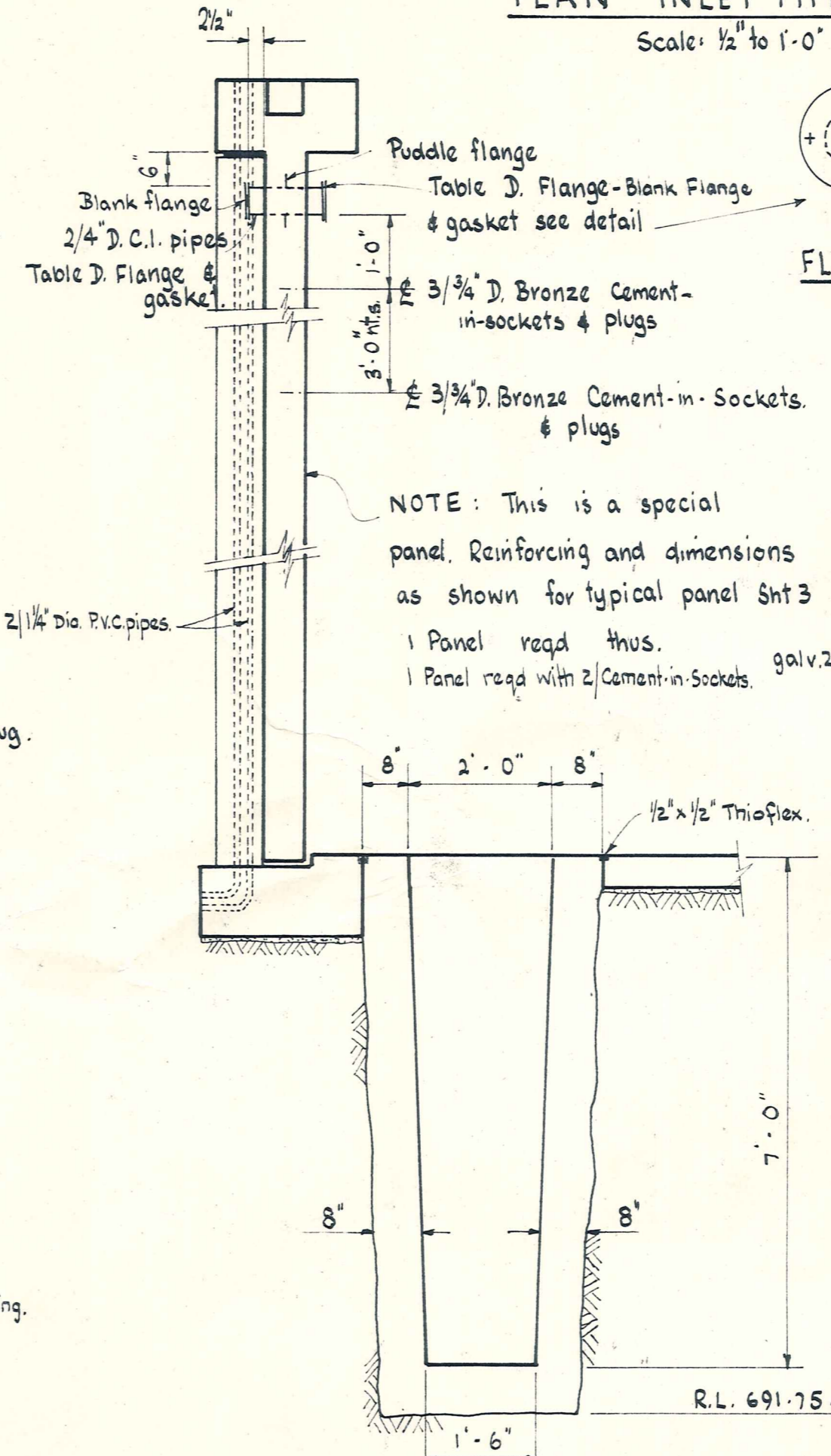
ACCESS LADDER DETAILS

1 reqd Full length 1 reqd 6'-0" long



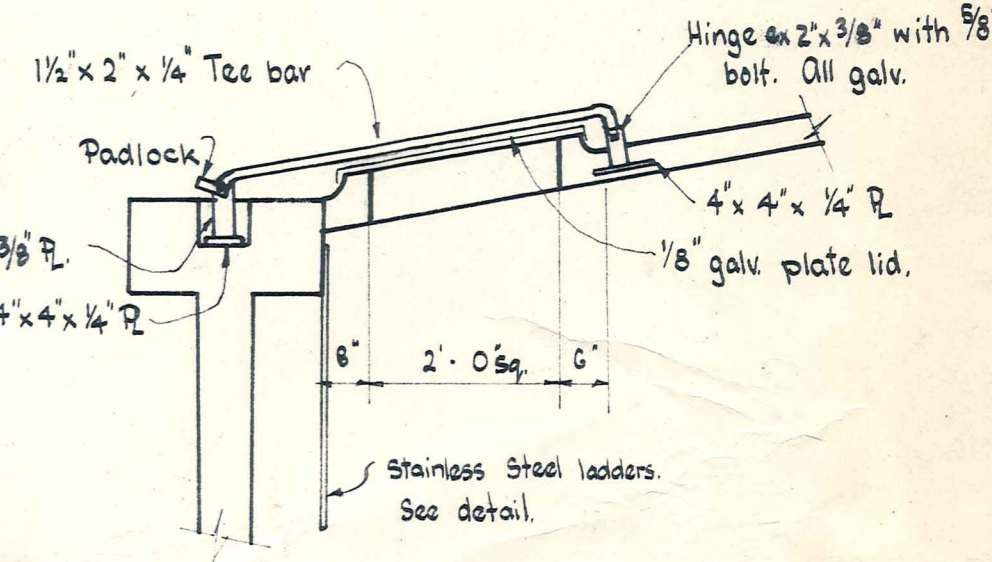
PLAN - PUMP TRENCH

Scale: 1/2" to 1'-0"



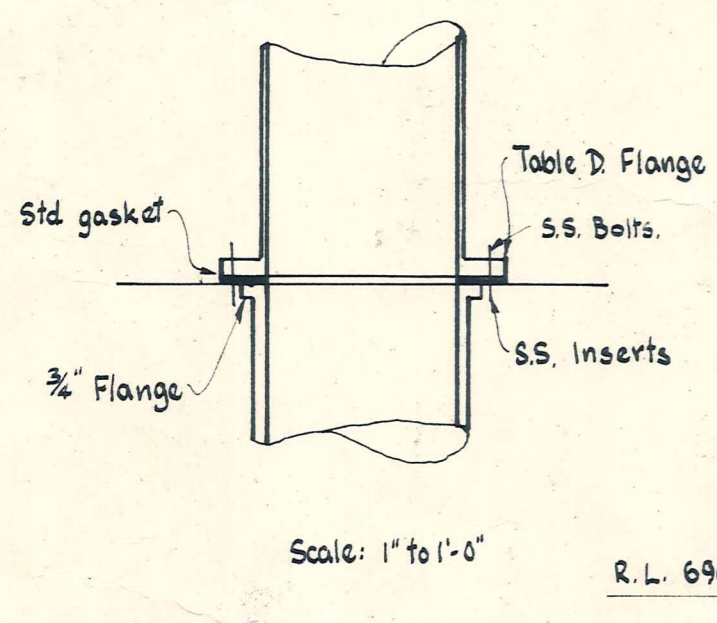
ELEVATION

Scale 1/2" to 1'-0"



MANHOLES ABOVE PUMP TRENCH

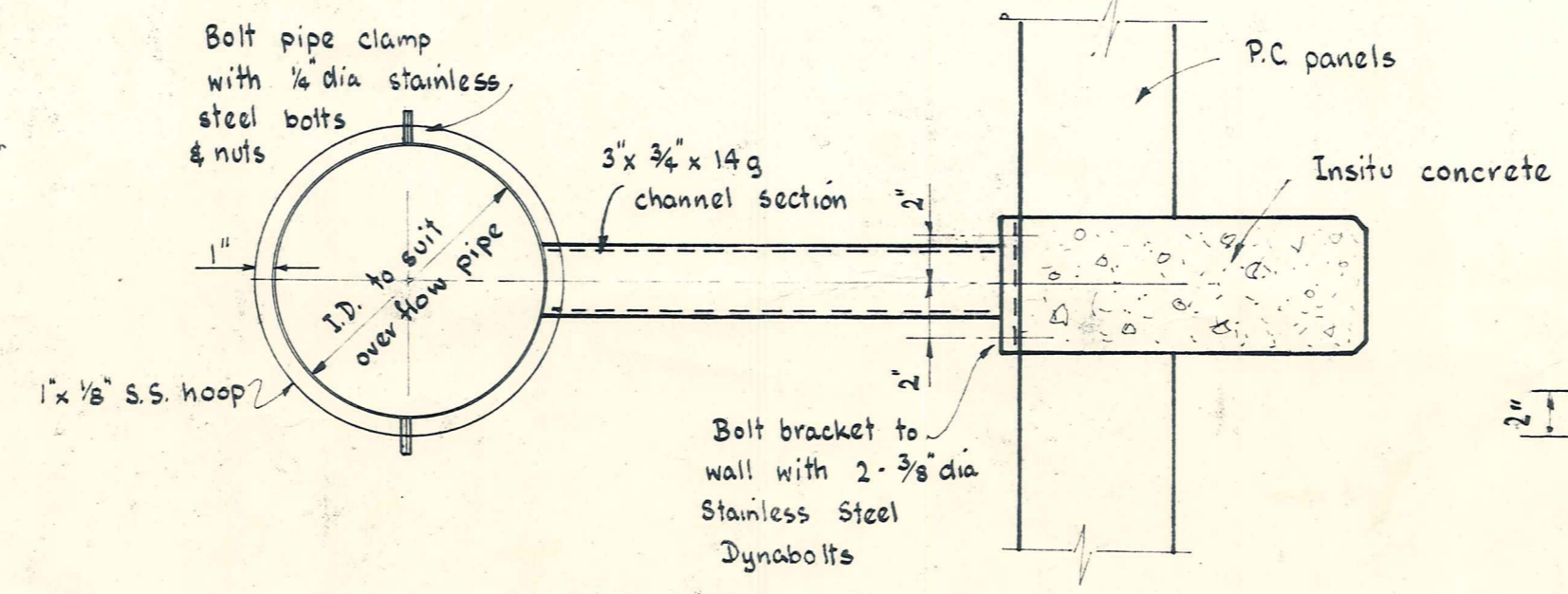
Scale: 1/2" to 1'-0"



Scale: 1" to 1'-0"

OVERFLOW PIPE

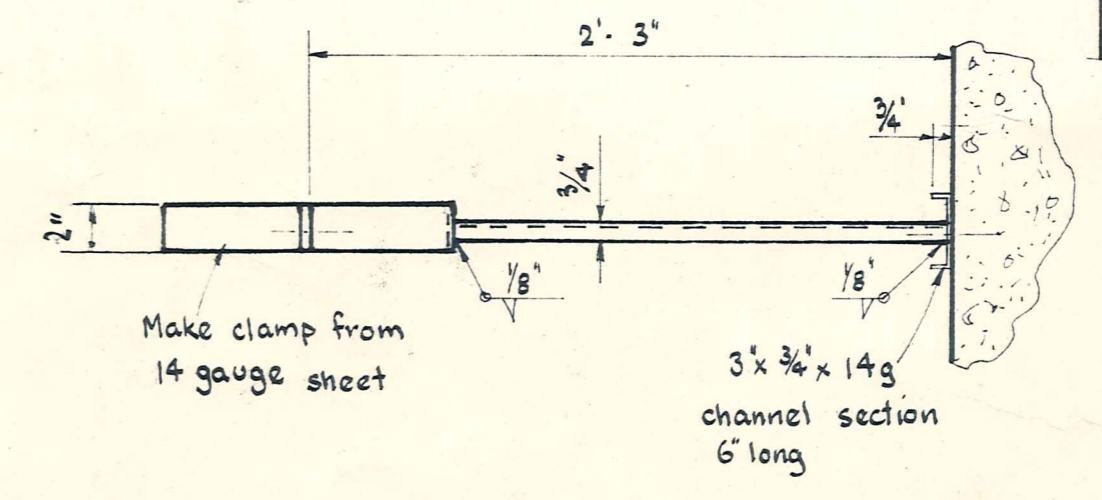
Scale: 1/2" to 1'-0"



OVERFLOW PIPE BRACKETS

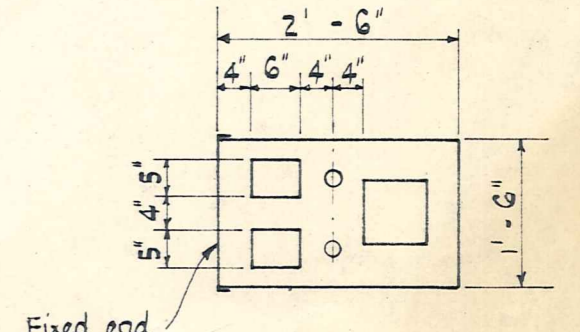
Scale 1 1/2" = 1'-0"

2 off required
NOTE: Brackets are to be made from Stainless Steel type 316



WATER LEVEL TRANSMITTER

Tentative details only. Final details will be supplied when type of transmitter is known. Transmitter, float, counterweight and chain to be supplied by Alexandra Borough Council. To be fixed by Contractor. Twin Junction boxes, supplied & fitted by O.C.E.P.B.



DIAGRAMMATIC LAYOUT OF TRANSMITTER HOUSING

PRELIMINARY PLANS
NOT FOR CONSTRUCTION

PRELIMINARY PLANS
NOT FOR CONSTRUCTION

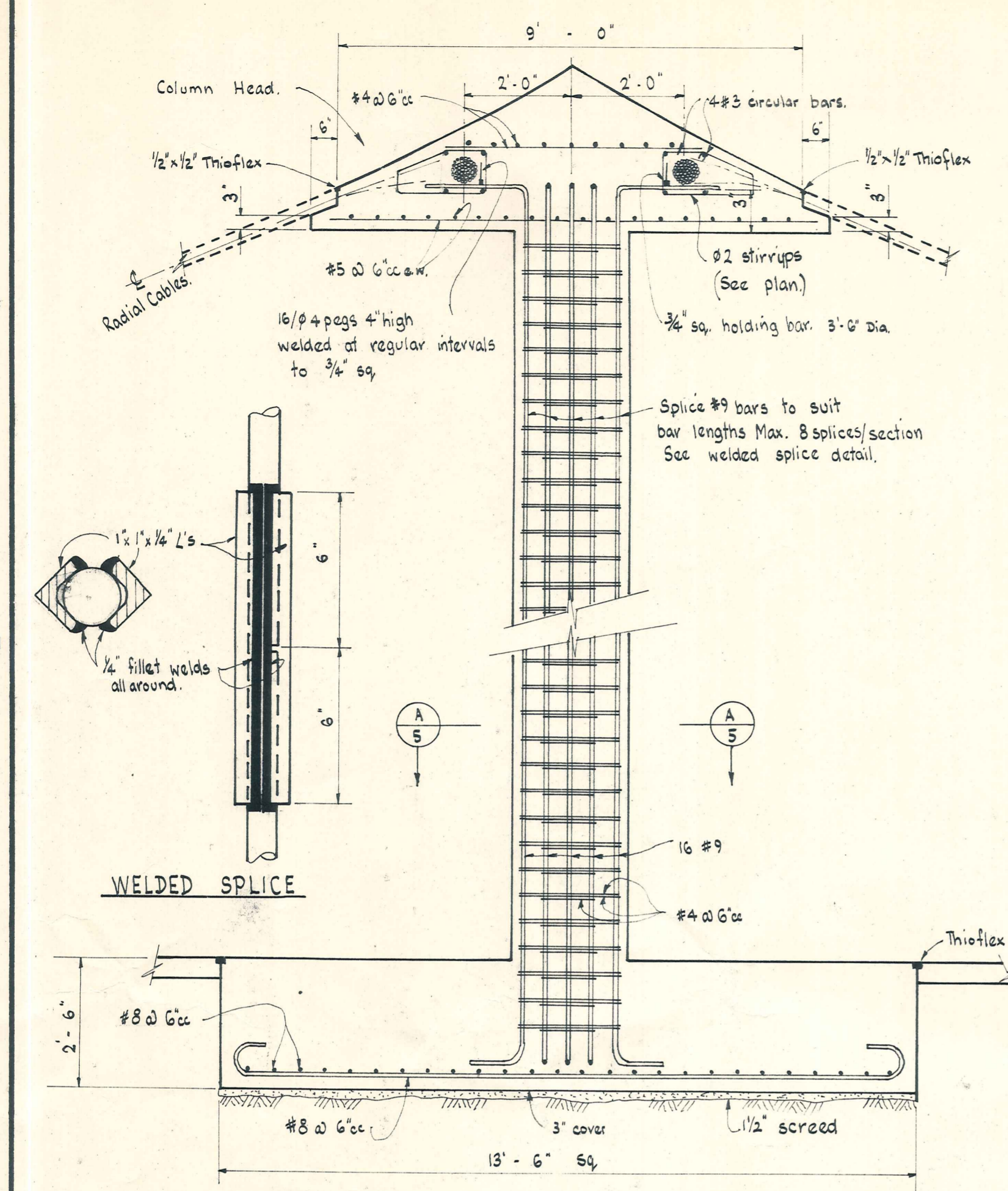
ALEXANDRA
BOROUGH COUNCIL

ALEXANDRA WATER RESERVOIR

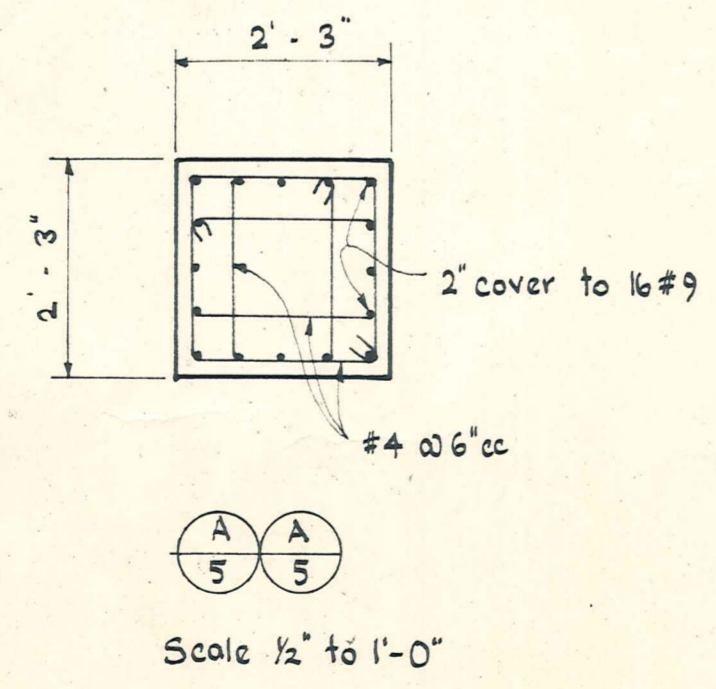
AMENDMENTS					NAME	DATE
No.	By	Date	Description	Apprd.	Surveyed	
					R. Adam	7/69
					B. Chamberlain	7/69
					A. Sim	7/69
					Checked	
					Approved	

DUFFILL, WATTS & KING
CONSULTING CIVIL & STRUCTURAL ENGINEERS
DUNEDIN & INVERCARGILL N.Z.

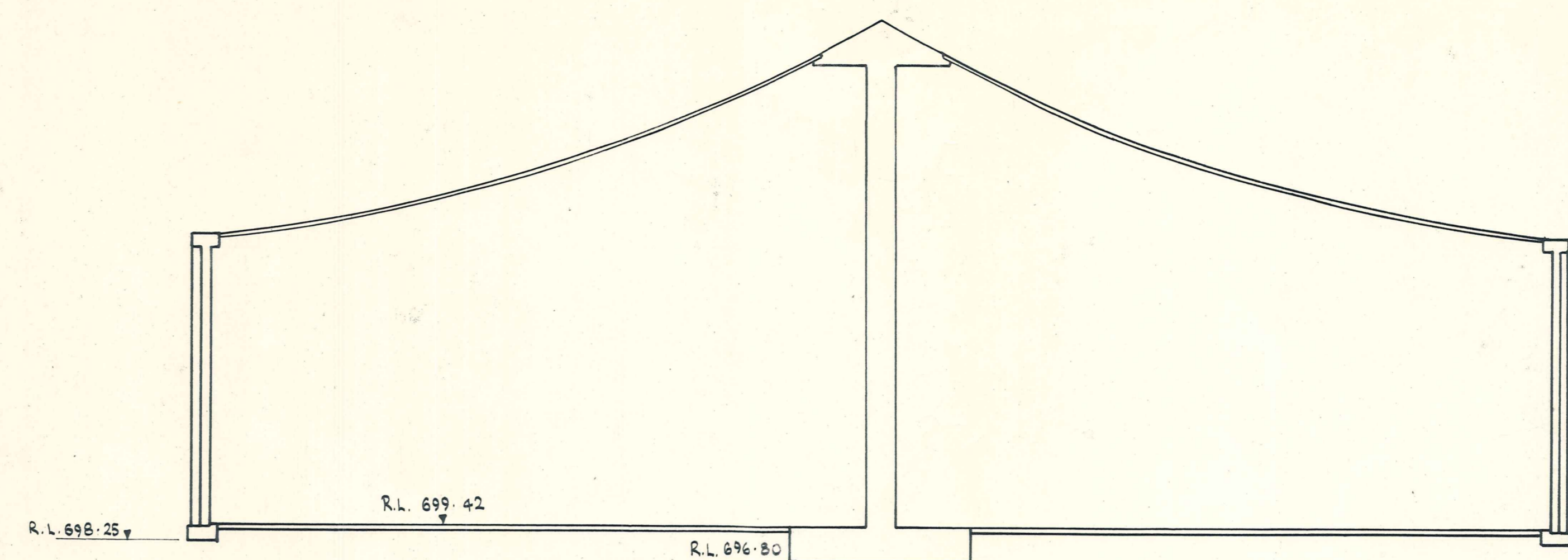
File
JOB No.
L. Bk. 6038
F. Bk.
Sheet 4 of 5 Sheets



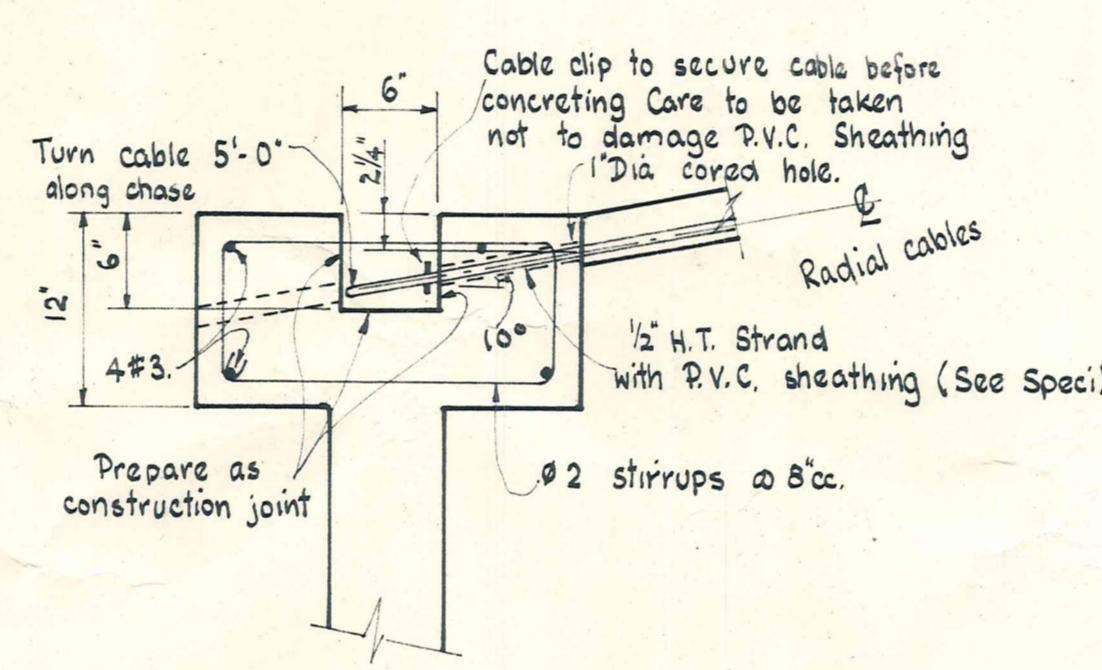
CENTRAL COLUMN AND FOOTING
Scale: 1/2" to 1'-0"



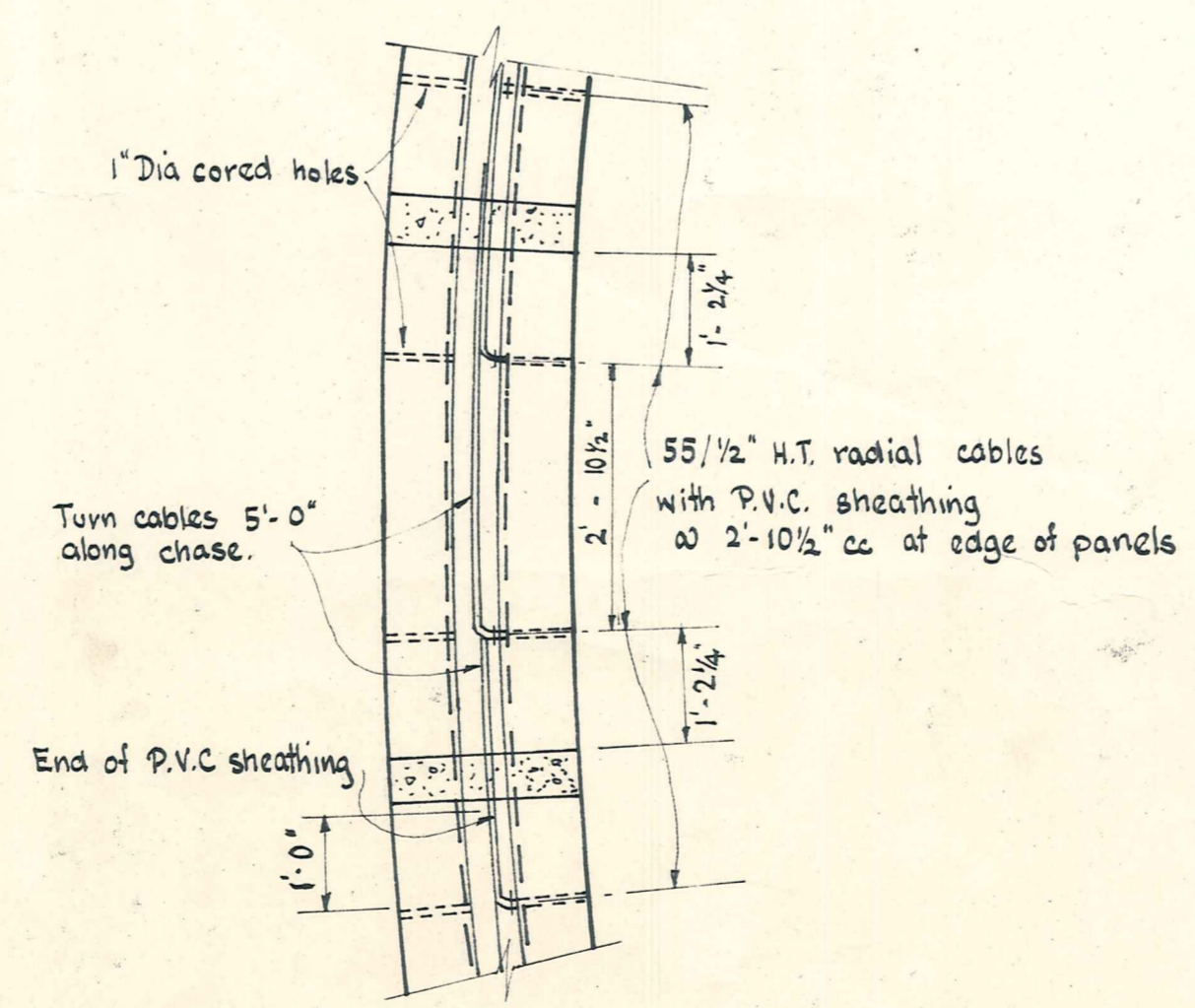
Scale: 1/2" to 1'-0"



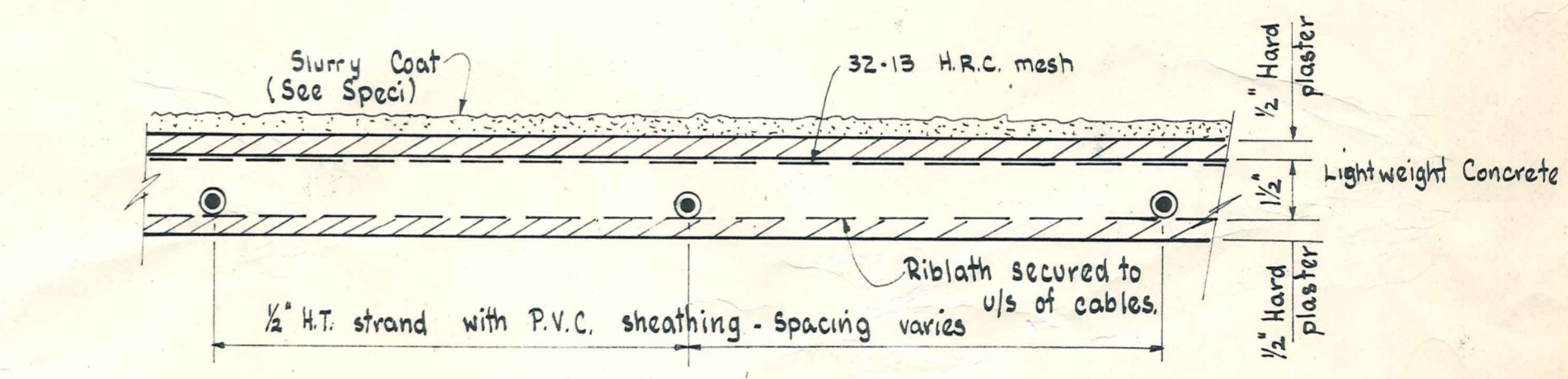
TYPICAL SECTION
Scale: 1/8" to 1'-0"



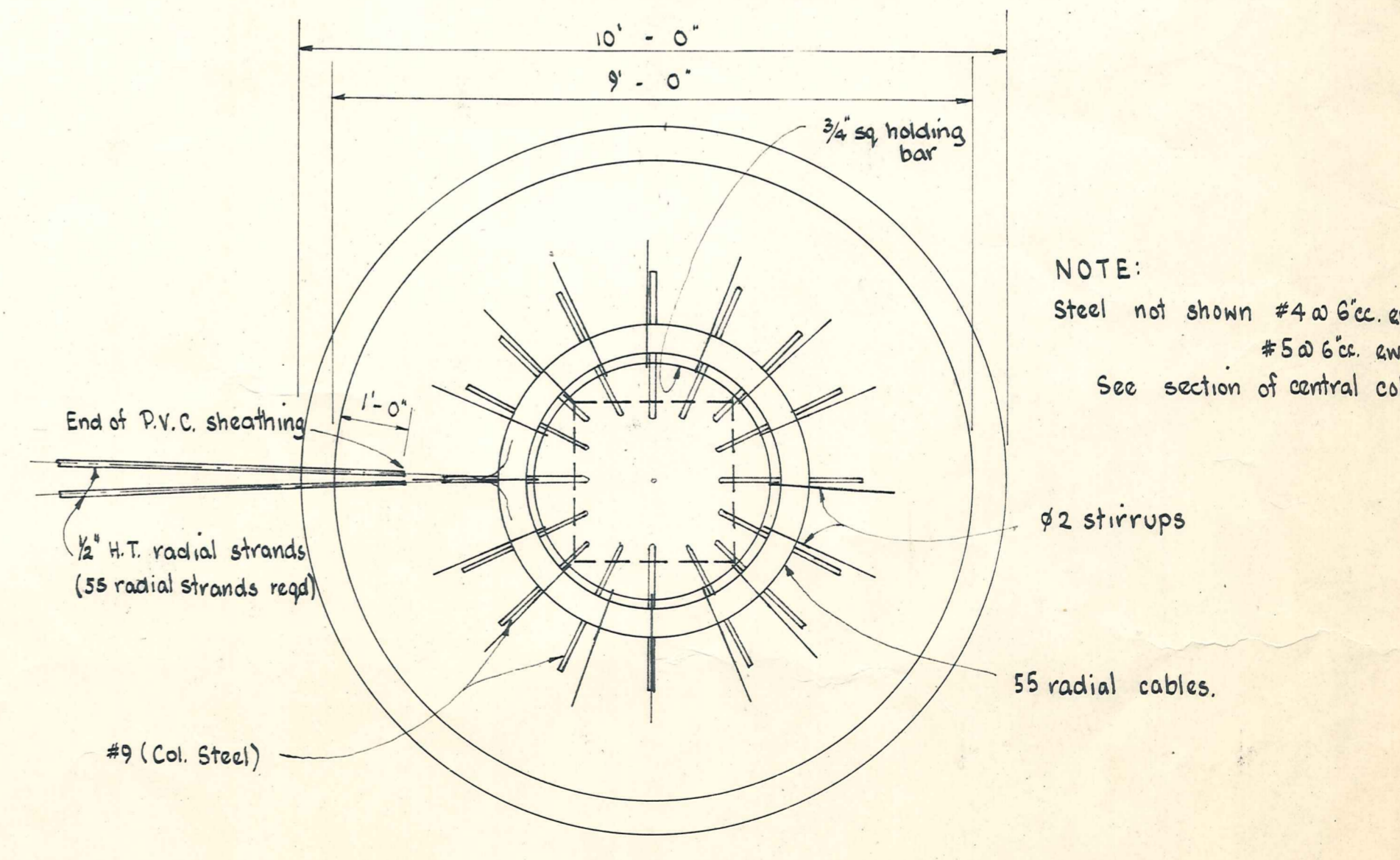
ROOF - EDGE DETAIL
Scale: 1" to 1'-0"



PLAN AT EDGE OF ROOF
Scale: 1/2" to 1'-0"



SECTION THROUGH ROOF Scale: 1/4 Full Size.



PLAN AT CENTRAL COLUMN HEAD
Scale: 1/2" to 1'-0"

NOTE:
Steel not shown #4 @ 6" cc. aw. t.
#5 @ 6" cc. aw. b
See section of central column.

PRELIMINARY PLANS
NOT FOR CONSTRUCTION

PRELIMINARY PLANS
NOT FOR CONSTRUCTION

ALEXANDRA
BOROUGH COUNCIL

ALEXANDRA WATER RESERVOIR

AMENDMENTS					NAME	DATE
No.	By	Date	Description	Apprd.		
					R. Adam	7/69
					B. Chamberlain	7/69
					A. Sim	7/69

DUFFILL, WATTS & KING
CONSULTING CIVIL & STRUCTURAL ENGINEERS
DUNEDIN & INVERCARGILL N.Z.

File
JOB No.
L.Bk. 6038
F.Bk.
Sheet 5 of 5 Sheets