



Ministry of Works
and Development

VINCENT COUNTY COUNCIL BANNOCKBURN BRIDGE REPLACEMENT (KAWARAU RIVER BRIDGE)

Contract N°

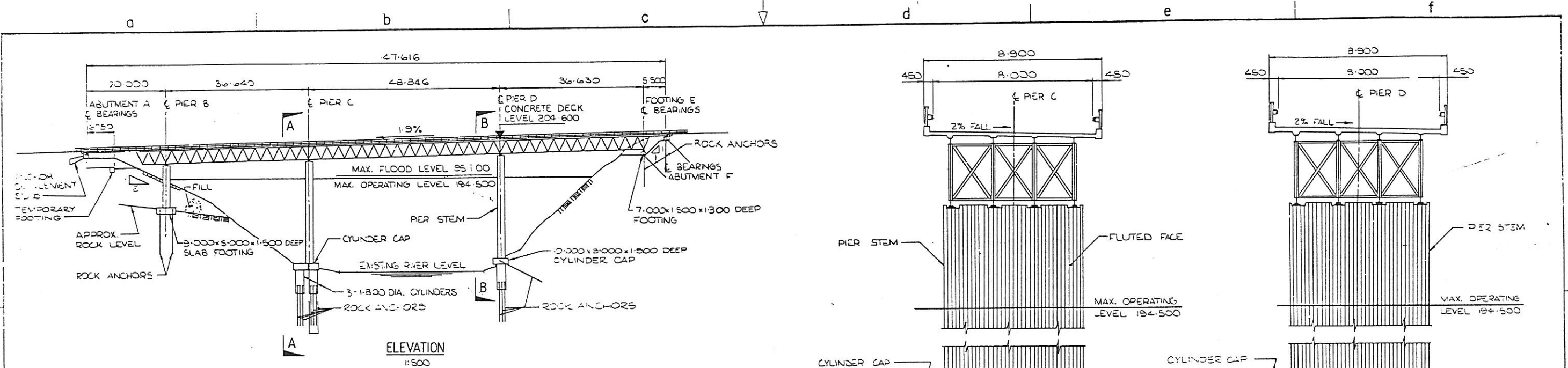
Set N°

CERTIFIED
AS BUILT
DRAWING
1/1/90

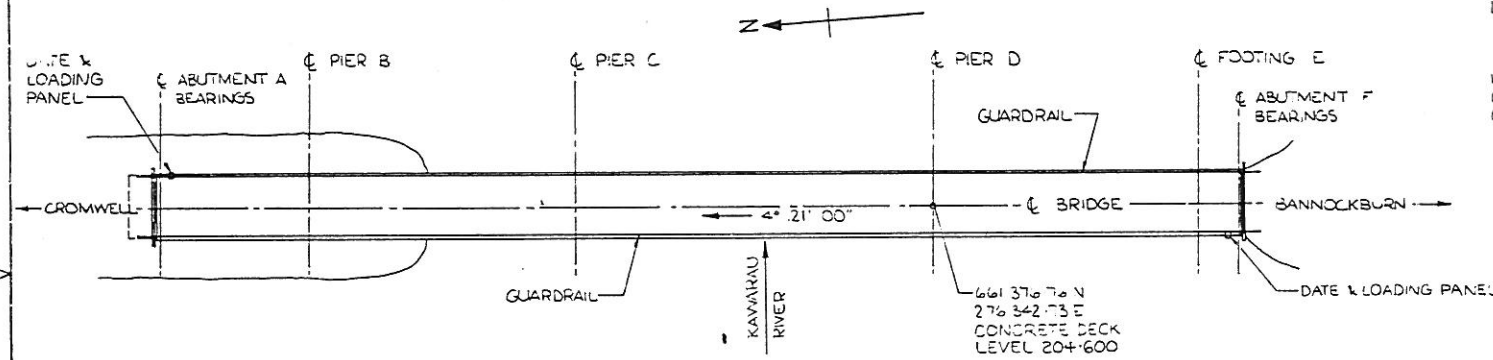
SHEET INDEX	
SHEET	TITLE
	INDEX SHEET
7/573/1/7004/1	GENERAL LAYOUT
2	LAUNCHING BED
3	LAUNCHING SEQUENCE
4	LAUNCHING EQUIPMENT— ASSEMBLY & OPERATION
5	ABUTMENT A— DIMENSIONS
6	ABUTMENT A— REINFORCEMENT
7	ABUTMENT F— DIMENSIONS AND REINFORCEMENT
8	FOOTING E — DIMENSIONS AND REINFORCEMENT
9	FOOTING C — DIMENSIONS AND REINFORCEMENT
10	PIERS B AND D FOOTINGS — DIMENSIONS AND REINFORCEMENT
11	PIERS — DIMENSIONS
12	PIER B — REINFORCEMENT
13	PIER C AND D — REINFORCEMENT
14	MEMBER & BOLT SCHEDULE — PART A
15	MEMBER & BOLT SCHEDULE — PART B
16	MEMBER & BOLT SCHEDULE — PART C
17	LANDSPAN AB, EF, & MISC STEELWORK— MEMBER & BOLT SCHEDULE
18	TRUSS ASSEMBLY DETAILS — PLAN AND ELEVATION
19	TRUSS ASSEMBLY DETAILS — JOINTS
20	TRUSS ASSEMBLY DETAILS — SECTIONS
21	LANDSPANS — ASSEMBLY DETAILS
22	DEMOUNTING ROLLERS FOR ROCKING BEAMS
23	JACKING DOWN PROCEDURE
24	BEARING PLATES — FABRICATION DETAILS
25	BEARING DETAILS
26	ENERGY DISSIPATORS — FABRICATION AND ASSEMBLY DETAILS
27	DECK — PRECAST UNIT DETAILS
28	DECK — LAYOUT, PLAN & INSITU CONCRETE DETAILS
29	DECK — INSITU KERB, EXPANSION JOINT & DRAINAGE DETAILS
30	GUARDRAIL — LAYOUT AND DETAILS
31	GUARDRAIL — FABRICATION DETAILS
32	GUARDRAIL — INTERMEDIATE ANCHOR ON BRIDGE
33	ROCKING LAUNCHING BEAM
34	PIER B ANCHOR BEAM — ASSEMBLY AND FABRICATION
35	LAUNCHING JACK
36	ROCKING BEAM BEARING
37	PULL — DOWN ANCHOR BRACKET
38	LAUNCHING SKID SHOE
39	YOKE BEAM — FABRICATION & ASSEMBLY DETAILS
40	TEMPORARY ANCHOR — ABUTMENT F
41	JACKING BEAM ASSEMBLY FOR CAMBERING OF TRUSS
42	JACKING BRACKET
43	ROCKING BEAM PULL DOWN BRACKET
44	ASSEMBLY CLIP
45	POST OFFICE CABLE DUCTS

DESIGNED		BY	CHECKED	DATE	R. L. PRESTON CHIEF CIVIL ENGINEER	Ministry of Works and Development	VINCENT COUNTY COUNCIL BANNOCKBURN BRIDGE REPLACEMENT (KAWARAU RIVER BRIDGE)	ORIGINAL SCALES	NOT TO SCALE	FILE 92/12/90/272/1	
DRAWN				7/15	J. C. RUTLEDGE ASSISTANT CHIEF CIVIL ENGINEER (DESIGN)			CIVIL ENGINEERING HEAD OFFICE			DOSSIER 386
DES. SUP'D				8/15		BRIDGE SECTION	INDEX SHEET	JOB	CODE	SHEET	REVISION
DWS SUP'D				8/15		TG SHADWELL Commissioner		7/573/1	7004	0	RAE
RECOMMENDED				9/15	APPROVED						
AMENDMENTS		BY	APPROVED	DATE	PRINCIPAL DESIGN ENGINEER						

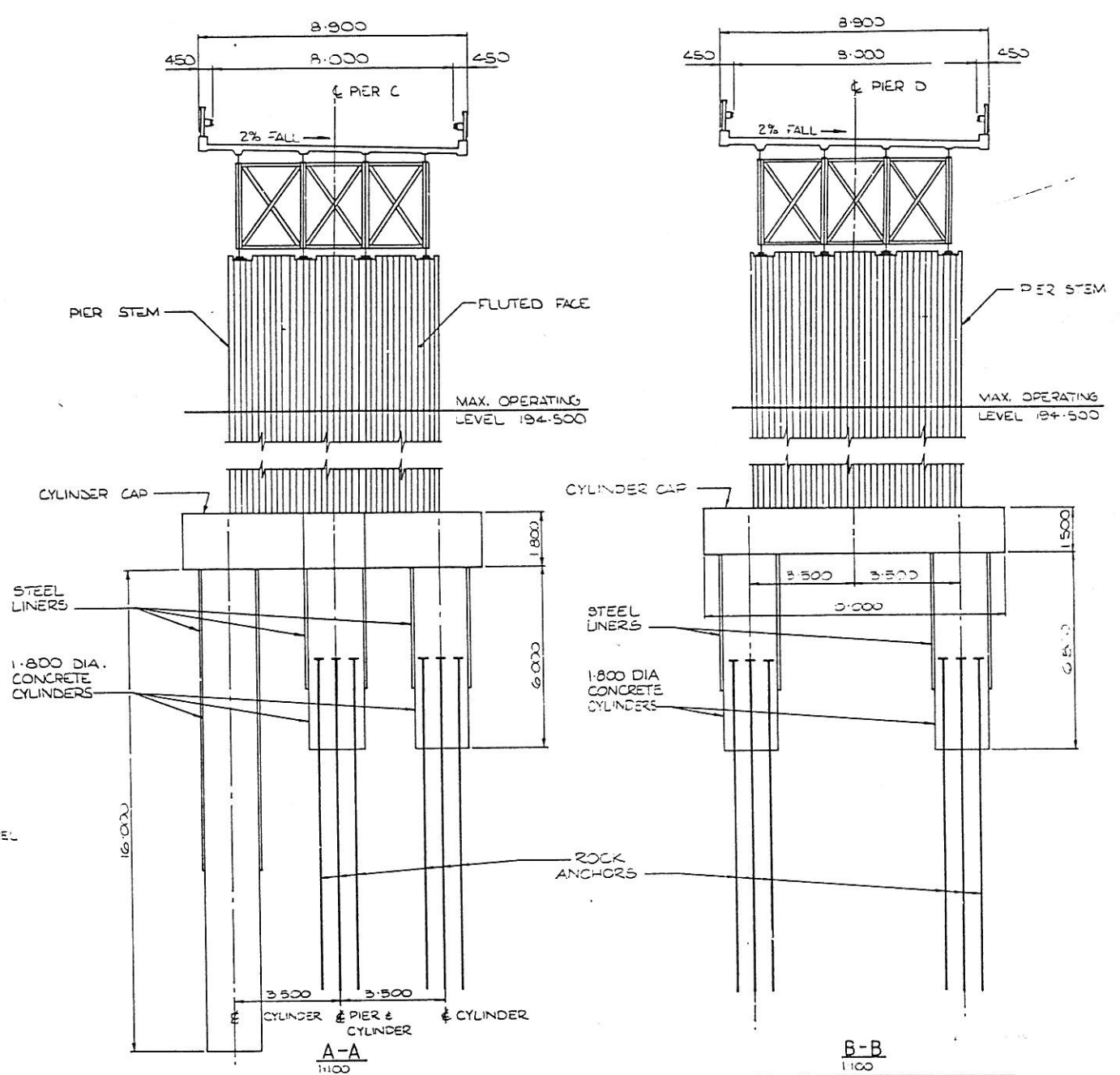
ORIGINAL SIZE
A 1



ELEVATION
1:500



PLAN
1:500



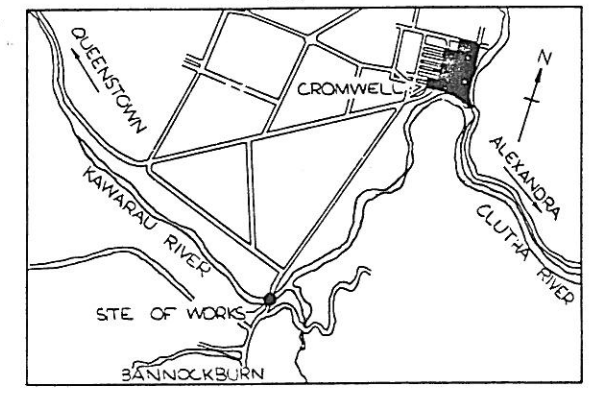
A-A
1:100

B-B
1:100

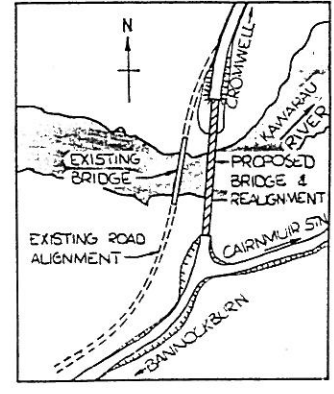
- DESIGN DATA**
- MINIMUM CONCRETE COVER SHALL BE 50MM (A) OR 25MM (B) UNLESS OTHERWISE SPECIFIED.
 - PERFORMANCE TO BE AS SPECIFIED WITH NCC 275 SUBSTRUCTURE DECK GRADE 275 KERB GRADE 275
 - ROCK ANCHORS TO BE 25MM DIA STEEL BARS WITH MIN. 100MM EMBEDMENT
 - COORDINATES ARE BASED ON LINCOLN'S PEAK (100 000N, 100 000E)
 - LEVELS ARE BASED ON 1984 MEAN SEA LEVEL DATUM
 - DESIGN LOADING AS PER HINTS 72
 - ALL SETTING OUT TO BE BASED ON 200M LINES OF PIER 0 AND BEARING OFF OF PIER 0 TO BE MAINTAINED

- NOTES**
- RIVER LEVEL IS SHOWN AS INDICATION ONLY. THE CONTRACTOR SHALL INCLUDE FURTHER SURVEY MEASURES NECESSARY TO COMPLETE CONSTRUCTION OF THE PROJECT.

CERTIFIED
AS BUILT
DRAWING
DATE 2/10/96
SEE 450



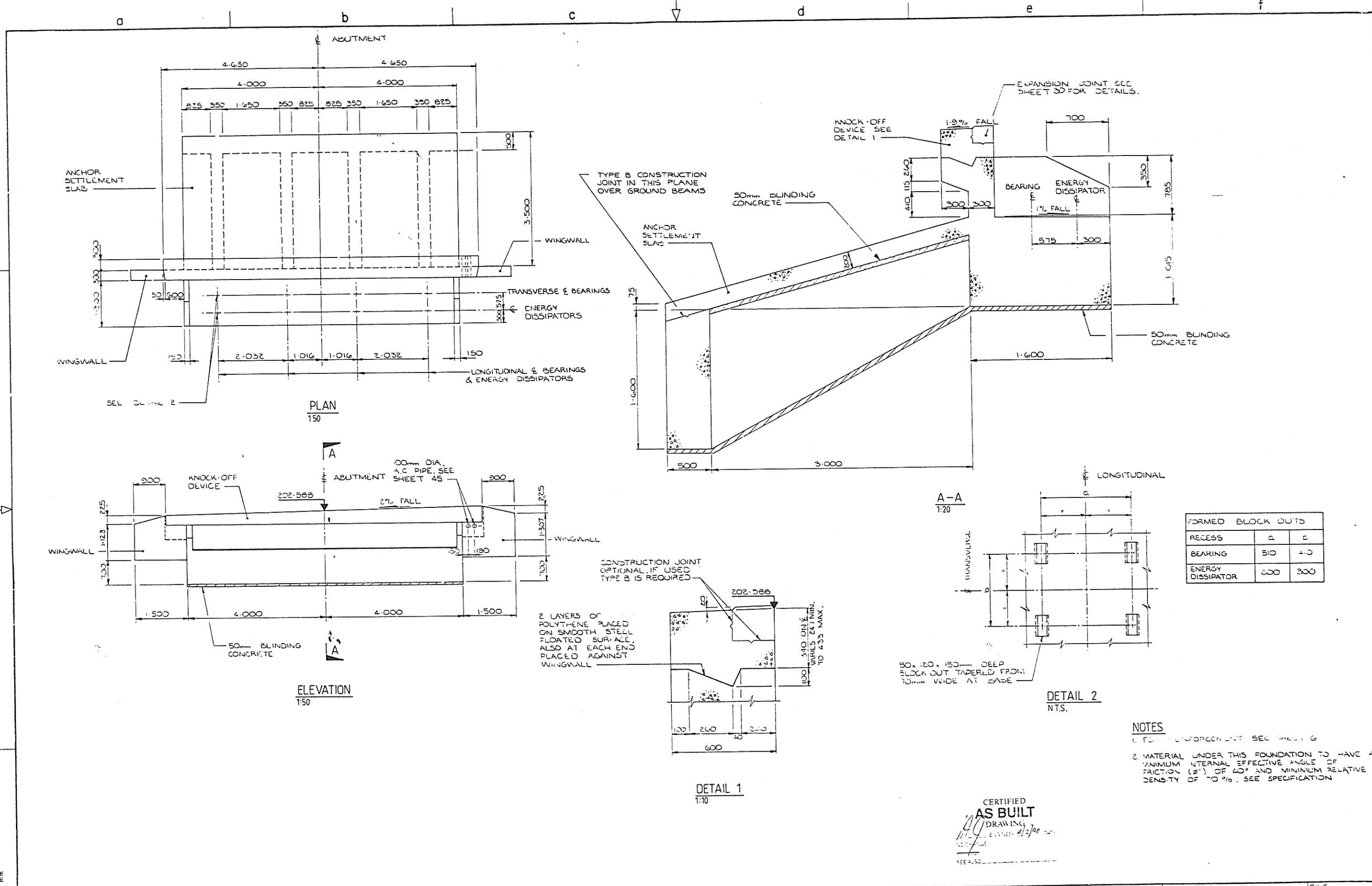
LOCALITY PLAN
1:63,360



SITE PLAN
1:4,000

DESIGNED	BY	CHECKED	DATE	R. L. PRESTON CHIEF CIVIL ENGINEER	Ministry of Works and Development	VINCENT COUNTY COUNCIL BANNOCKBURN BRIDGE REPLACEMENT (KAWARAU RIVER BRIDGE)	ORIGINAL SCALES	AS SHOWN	FILE 92/12/90/272/1					
DRAWN			8/96	J. C. RUTLEDGE ASSISTANT CHIEF CIVIL ENGINEER (DESIGN)			CIVIL ENGINEERING HEAD OFFICE	DOSSIER	386					
DES. SUP			4/96		BRIDGE SECTION	GENERAL LAYOUT	JOB	7/573/1	CODE	7004	SHEET	1	REVISION	RAB
DWG. SUP			7/96		TG. SHADWELL Commissioner									
RECOMMENDED			9/96	APPROVED										
REVISIONS	BY	APPD.	DATE	PRINCIPAL DESIGN ENGINEER										

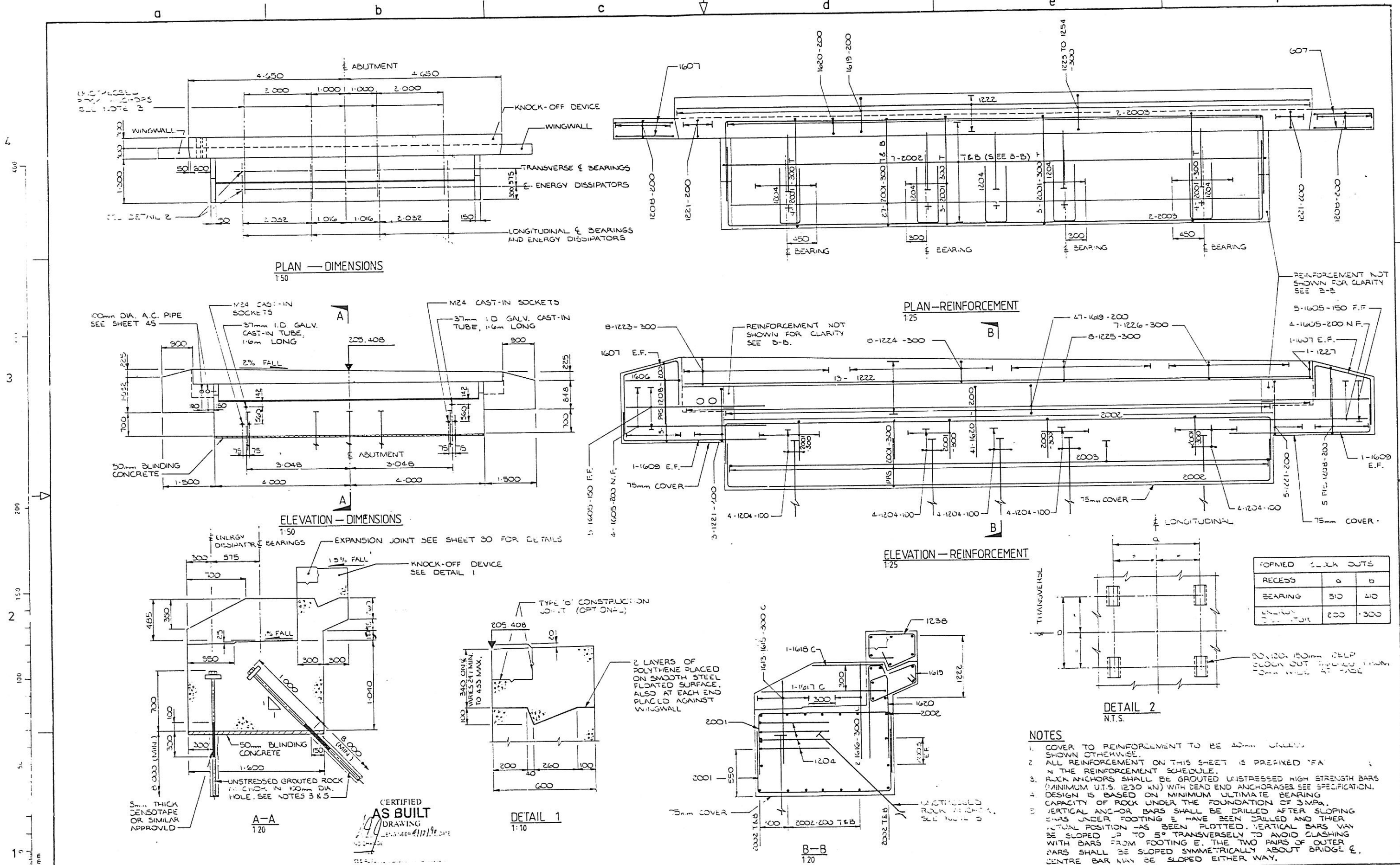
4
300
3
200
2
150
100
50
1
0
mm



NOTES
 1. FOR REINFORCEMENT SEE SHEET 6
 2. MATERIAL UNDER THIS FOUNDATION TO HAVE A MINIMUM INTERNAL EFFECTIVE ANGLE OF FRICTION (ϕ') OF 40° AND MINIMUM RELATIVE DENSITY OF 70%. SEE SPECIFICATION

CERTIFIED
AS BUILT
 DRAWING
 DATE: 21/3/90
 SEE 2.50

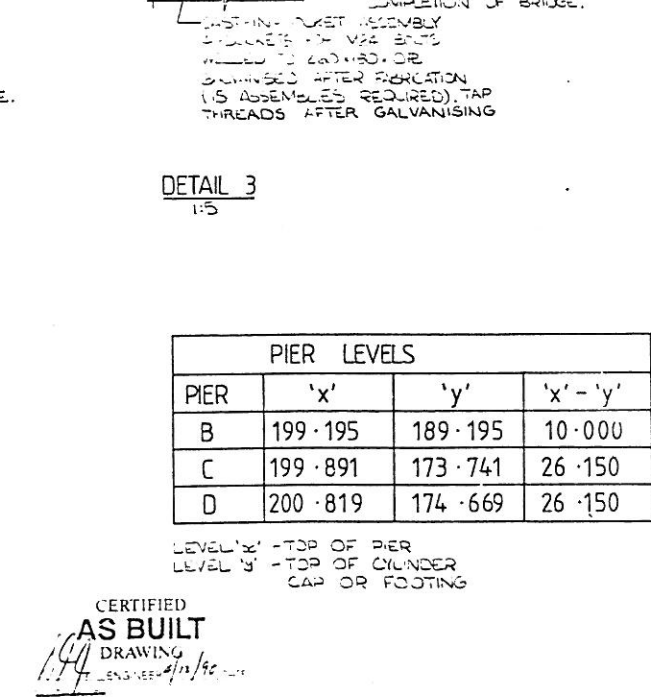
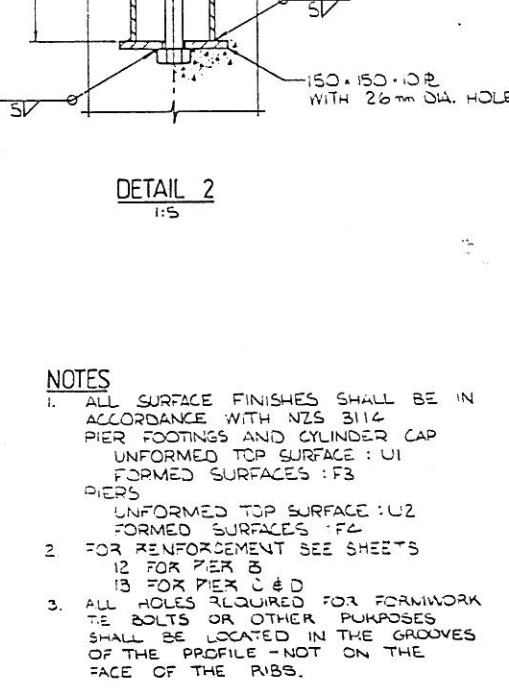
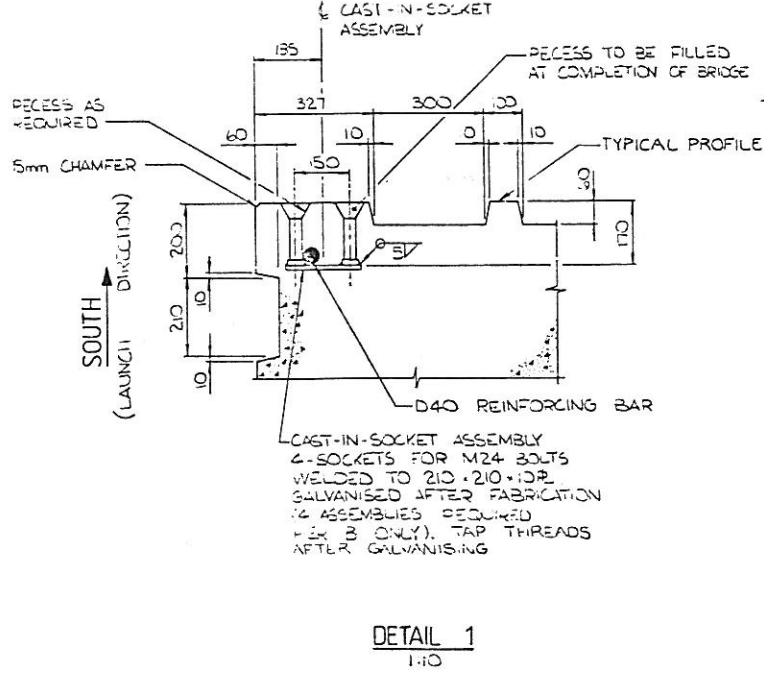
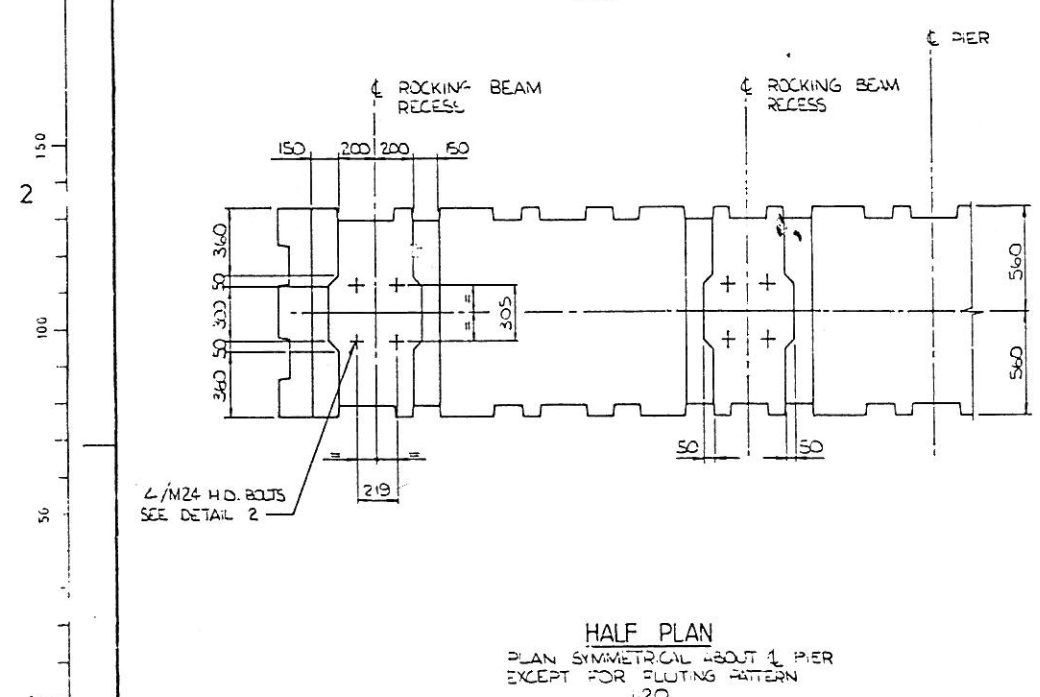
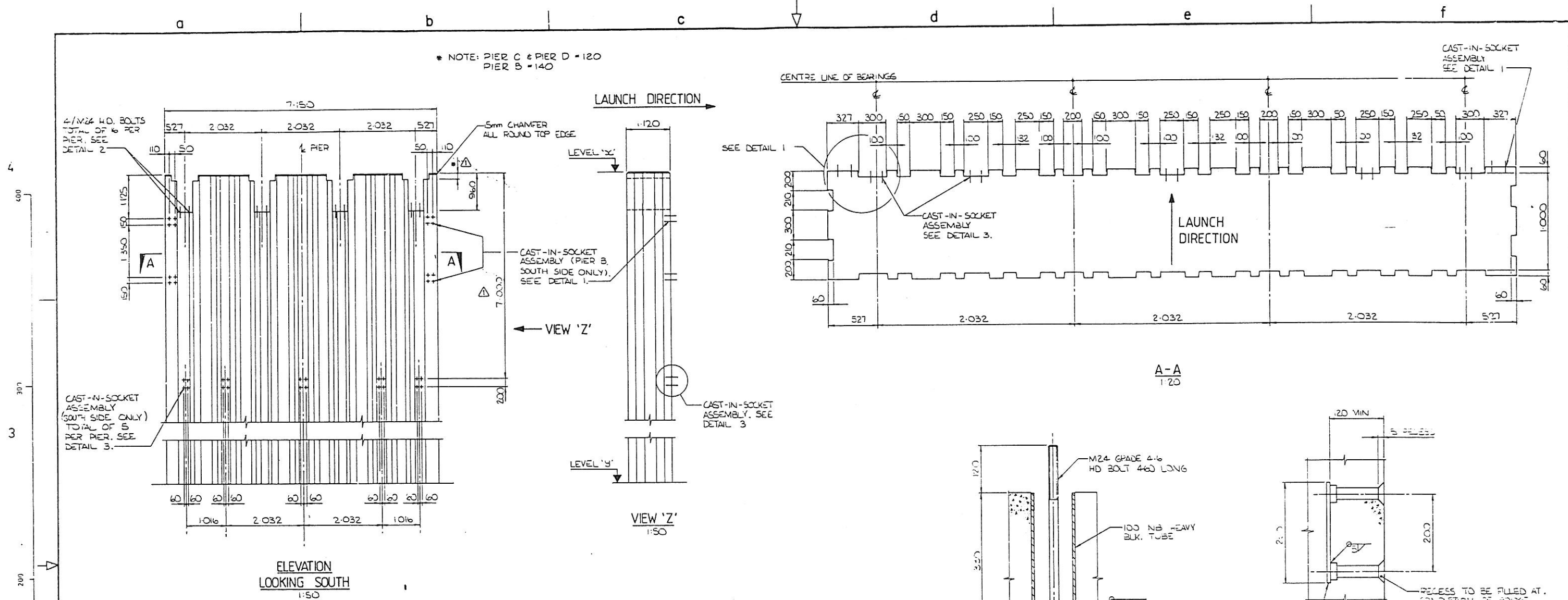
DESIGNED	G.S.	CHECKED	DATE	6/86	R. L. PRESTON CHIEF CIVIL ENGINEER	Ministry of Works and Development CIVIL ENGINEERING HEAD OFFICE BRIDGE SECTION TS SHADWELL Commissioner	VINCENT COUNTY COUNCIL BANNOCKBURN BRIDGE REPLACEMENT (KAWARAU RIVER BRIDGE)	ORIGINAL SCALES AS SHOWN	FILE 92/12/90/272/1
DRAWN	<i>[Signature]</i>	<i>[Signature]</i>	DATE	6/86	J. C. RUTLEDGE ASSISTANT CHIEF CIVIL ENGINEER (DESIGN)		CIVIL ENGINEERING HEAD OFFICE		DOSSER 386
DES. SLP	<i>[Signature]</i>	<i>[Signature]</i>	DATE	2/86					
DWG. SUP.	<i>[Signature]</i>	<i>[Signature]</i>	DATE	9/86					
RECOMMENDED	<i>[Signature]</i>	<i>[Signature]</i>	DATE	9/86	APPROVED <i>[Signature]</i>		ABUTMENT A — DIMENSIONS	JOB 7/573/1	CODE 7004
AMENDMENTS	BY	APPD.	DATE	PRINCIPAL DESIGN ENGINEER				SHEET 5	REVISION RAB



CERTIFIED
AS BUILT
DRAWING
DATE: 11/19/86

- NOTES**
- COVER TO REINFORCEMENT TO BE 40mm UNLESS SHOWN OTHERWISE.
 - ALL REINFORCEMENT ON THIS SHEET IS PREPARED 'FA' IN THE REINFORCEMENT SCHEDULE.
 - ROCK ANCHORS SHALL BE GROUTED UNSTRESSED HIGH STRENGTH BARS (MINIMUM U.T.S. 1230 kN) WITH DEAD END ANCHORAGES SEE SPECIFICATION. DESIGN IS BASED ON MINIMUM ULTIMATE BEARING CAPACITY OF ROCK UNDER THE FOUNDATION OF 3MPa.
 - VERTICAL ANCHOR BARS SHALL BE DRILLED AFTER SLOPING ENDS UNDER FOOTING E HAVE BEEN DRILLED AND THEIR ACTUAL POSITION HAS BEEN PLOTTED. VERTICAL BARS MAY BE SLOPED UP TO 5° TRANSVERSELY TO AVOID CLASHING WITH BARS FROM FOOTING E. THE TWO PAIRS OF OUTER BARS SHALL BE SLOPED SYMMETRICALLY ABOUT BRIDGE C. CENTRE BAR MAY BE SLOPED EITHER WAY.

DESIGNED	BY	CHECKED	DATE	R. L. PRESTON CHIEF CIVIL ENGINEER	Ministry of Works and Development	VINCENT COUNTY COUNCIL BANNOCKBURN BRIDGE REPLACEMENT (KAWARAU RIVER BRIDGE)	ORIGINAL SCALES	AS SHOWN	FILE	92/12/30/272/1			
DRAWN				J. C. RUTLEDGE ASSISTANT CHIEF CIVIL ENGINEER (DESIGN)			CIVIL ENGINEERING HEAD OFFICE	DOSSIER	386				
DES SUP					BRIDGE SECTION	ABUTMENT F — DIMENSIONS AND REINFORCEMENT	JOB	7/573/1	7004	SHEET	7	REVISION	RAB
DWG SUP					TG SHADWELL Commissioner								
RECOMMENDED													
AMENDMENTS	BY	APPD.	DATE	PRINCIPAL DESIGN ENGINEER									



NOTES

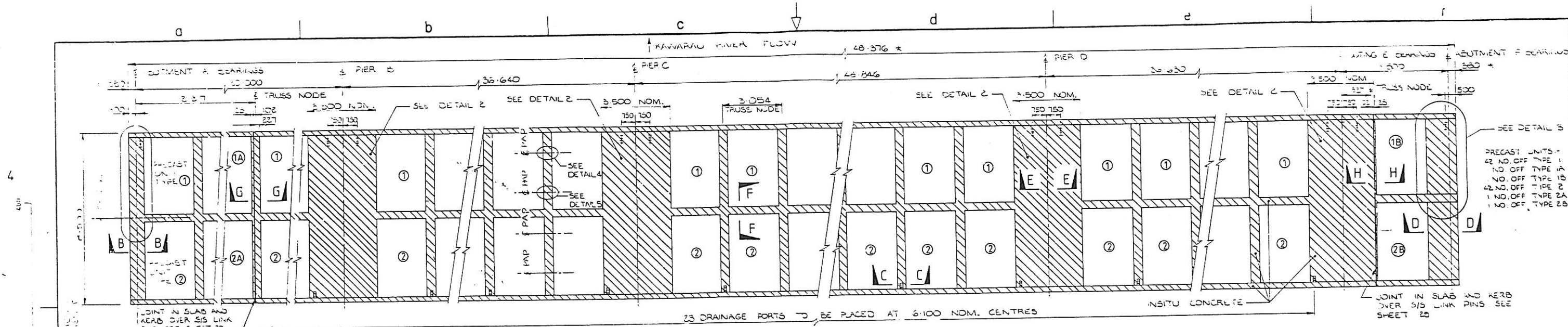
- ALL SURFACE FINISHES SHALL BE IN ACCORDANCE WITH NZS 3114 PIER FOOTINGS AND CYLINDER CAP UNFORMED TOP SURFACE : U1 FORMED SURFACES : F3 PIERS UNFORMED TOP SURFACE : U2 FORMED SURFACES : F2
- FOR REINFORCEMENT SEE SHEETS 12 FOR PIER B 13 FOR PIER C & D
- ALL HOLES REQUIRED FOR FORMWORK TIE BOLTS OR OTHER PURPOSES SHALL BE LOCATED IN THE GROOVES OF THE PROFILE - NOT ON THE FACE OF THE RIBS.

PIER LEVELS			
PIER	'x'	'y'	'x' - 'y'
B	199.195	189.195	10.000
C	199.891	173.741	26.150
D	200.819	174.669	26.150

LEVEL 'x' - TOP OF PIER
LEVEL 'y' - TOP OF CYLINDER CAP OR FOOTING

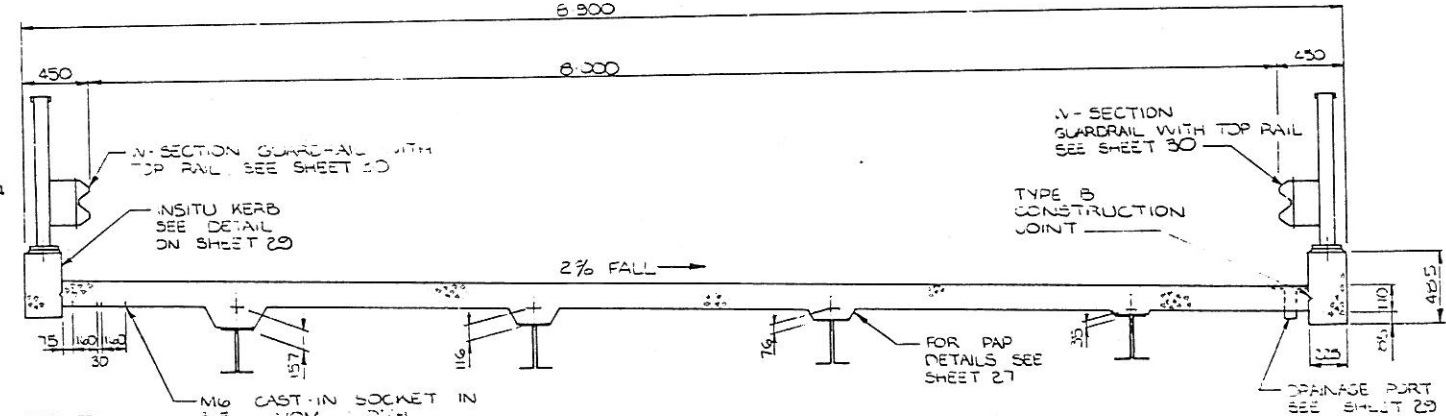
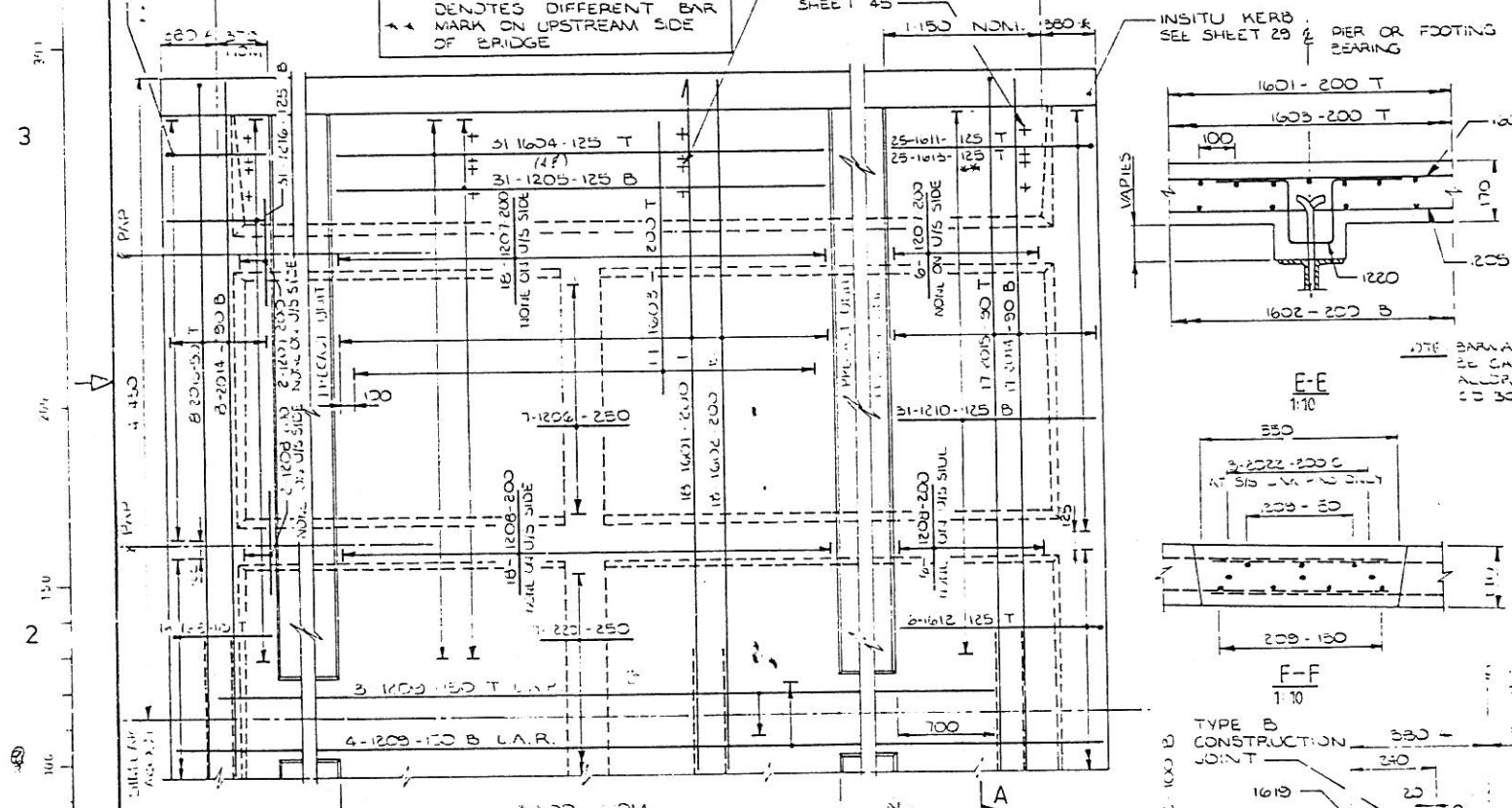
CERTIFIED
AS BUILT
DRAWING
1.14
ENGINEER: j/n/92

DESIGNED	BY	CHECKED	DATE	R. L. PRESTON CHIEF CIVIL ENGINEER	Ministry of Works and Development	VINCENT COUNTY COUNCIL BANNOCKBURN BRIDGE REPLACEMENT (KAWARAU RIVER BRIDGE)	ORIGINAL SCALES AS SHOWN	FILE 92/12/90/272/1		
DRAWN				J. C. RUTLEDGE ASSISTANT CHIEF CIVIL ENGINEER (DESIGN)			CIVIL ENGINEERING HEAD OFFICE	DOSSIER	386	
DWG SUP					BRIDGE SECTION	PIERS - DIMENSIONS	JOB	CODE	SHEET	REVISION
					TG SHADWELL, Commissioner		7/573/1	7004	11	RAB

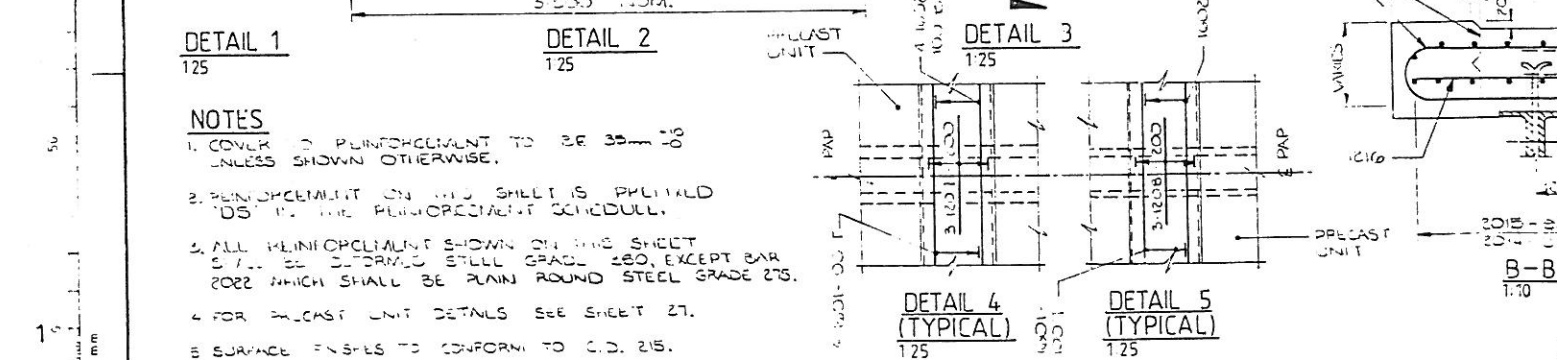


PRECAST UNITS -
 42 NO. OFF TYPE 1A
 42 NO. OFF TYPE 1B
 42 NO. OFF TYPE 2
 1 NO. OFF TYPE 2A
 1 NO. OFF TYPE 2B

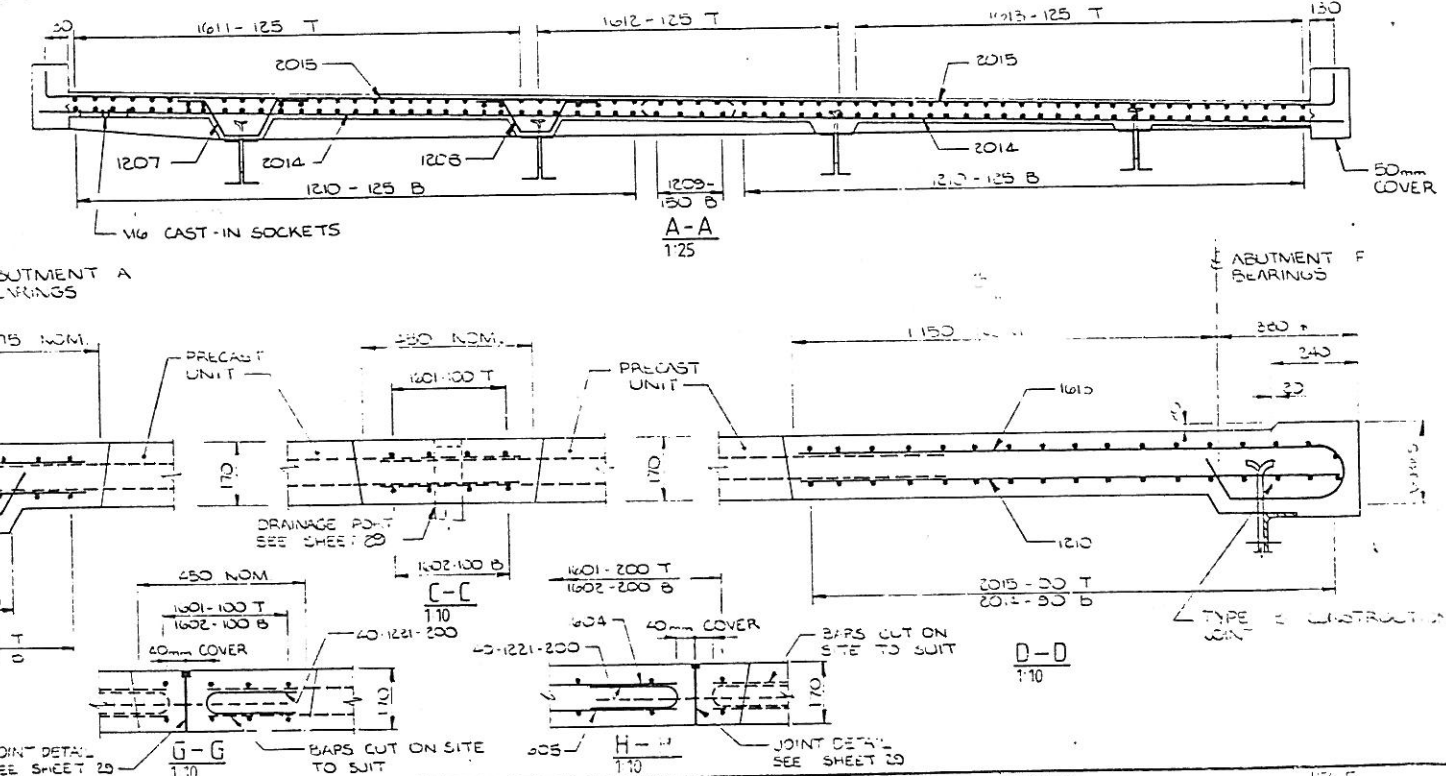
LAYOUT PLAN OF DECK
 1:100



TYPICAL SECTION-INSITU CONCRETE
 1:25



NOTES
 1. COVER TO REINFORCEMENT TO BE 35mm UNLESS SHOWN OTHERWISE.
 2. REINFORCEMENT ON THIS SHEET IS PRELIMINARY UNLESS SHOWN OTHERWISE.
 3. ALL REINFORCEMENT SHOWN ON THIS SHEET SHALL BE SUPPLIED STILL GRADE 280, EXCEPT BAR 2022 WHICH SHALL BE PLAIN ROUND STEEL GRADE 275.
 4. FOR PRECAST UNIT DETAILS SEE SHEET 27.
 5. SURFACE FINISHES TO CONFORM TO C.D. 215.



ORIGINAL SIZE A1	DESIGNER	BY	CHECKED	DATE	R. L. PRESTON CHIEF CIVIL ENGINEER	Ministry of Works and Development CIVIL ENGINEERING HEAD OFFICE BRIDGE SECTION T. G. SHADWELL Commissioner	VINCENT COUNTY COUNCIL BANNOCKBURN BRIDGE REPLACEMENT (KAWARAU RIVER BRIDGE) DECK - LAYOUT PLAN & INSITU CONCRETE DETAILS	ORIGINAL SCALES	AS SHOWN	FILE	92/12/90/272/1				
	DRAWN				J. C. RUTLEDGE ASSISTANT CHIEF CIVIL ENGINEER (DESIGN)			DOSSIER	386						
	DES SUP				APPROVED			JOB	7/573/1	CODE	7004	SHEET	28	REVISION	RAE
	DWG SUP				PRINCIPAL DESIGN ENGINEER										
	RECOMMENDED														

