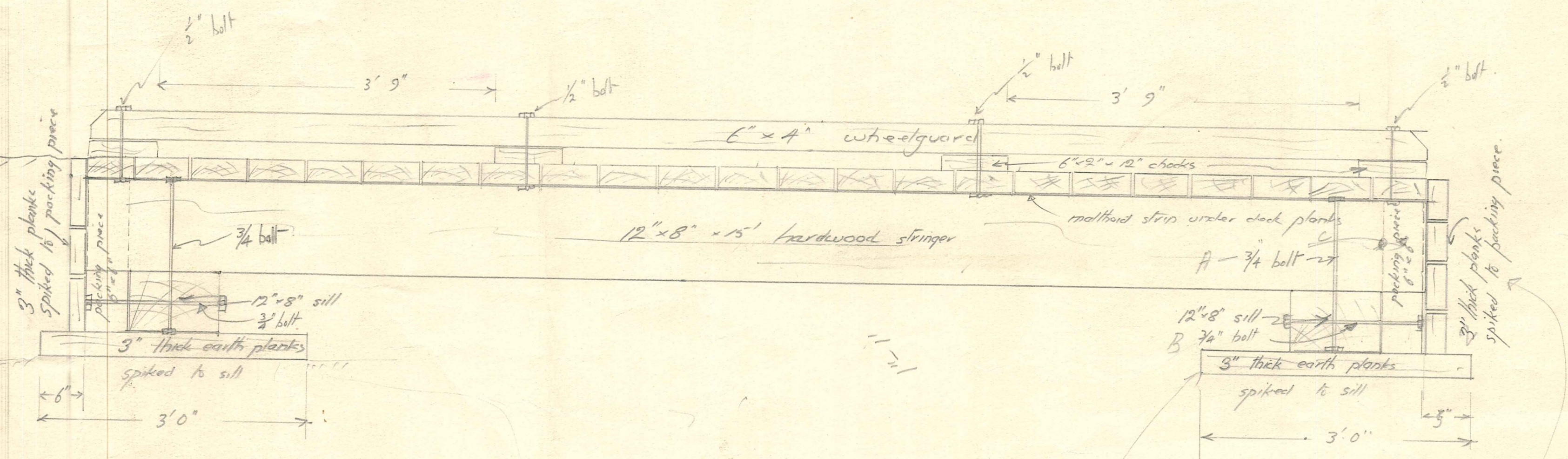
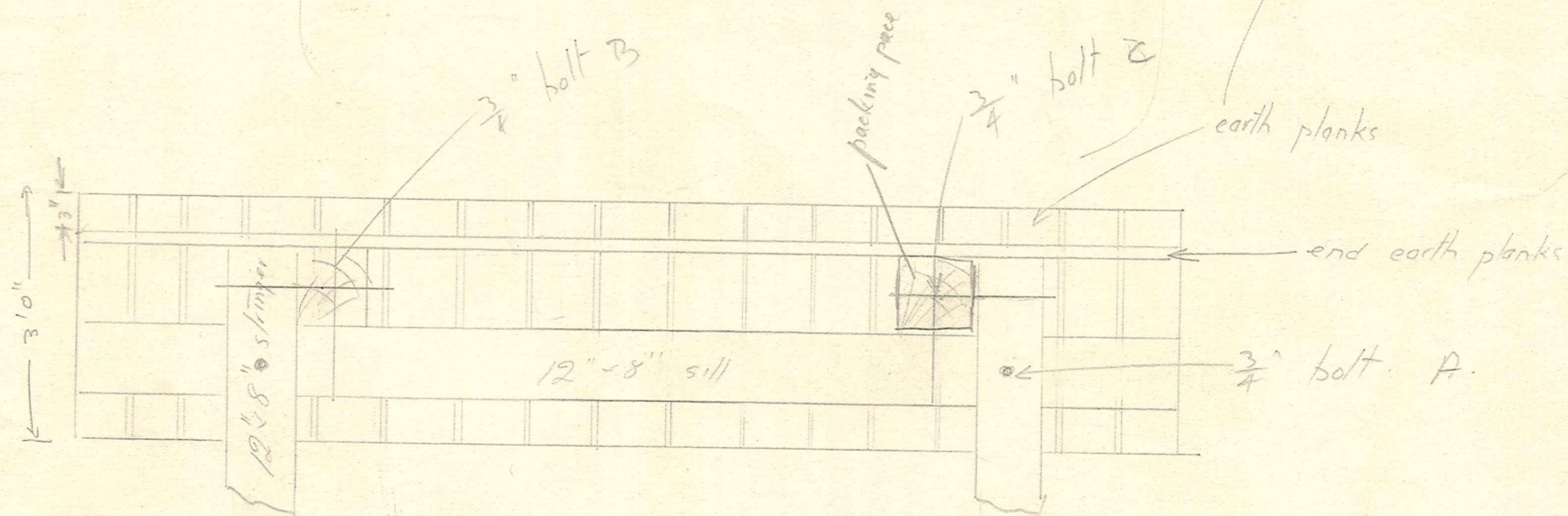


Cross SECTION THROUGH BRIDGE.



SIDE ELEVATION



Plan of Ends not to scale.

25' x 12" x 8" M.H.A.  
 8" x 3" deck planks 9'  
 8" x 2" " " " 9'

Assumes  
 2 x 11" x 5" x 15' timbers  
 10' of 5" x 3" x 12' log timbers  
 12" x 8" stringer  
 2 x 6" x 4" x 15' wheelguard  
 5' of 6" x 2" x 12' checks  
 2' of 3" thick earth planks  
 1/2" bolts  
 3/4" bolts  
 12" x 8" sills  
 3" thick earth planks spiked to sills  
 3' thick planks spiked to packing piece

bolts 20" x 3/4" x 1/2" 8.  
 14" x 3/4" x 1/2" 4.  
 12" x 1/2" 8 wheel guard.

Butcher's Dam Bridge

193/6.