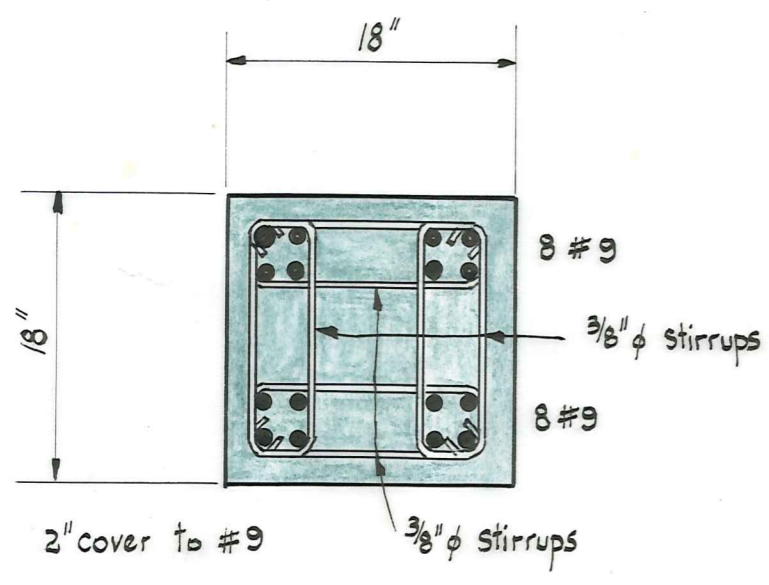
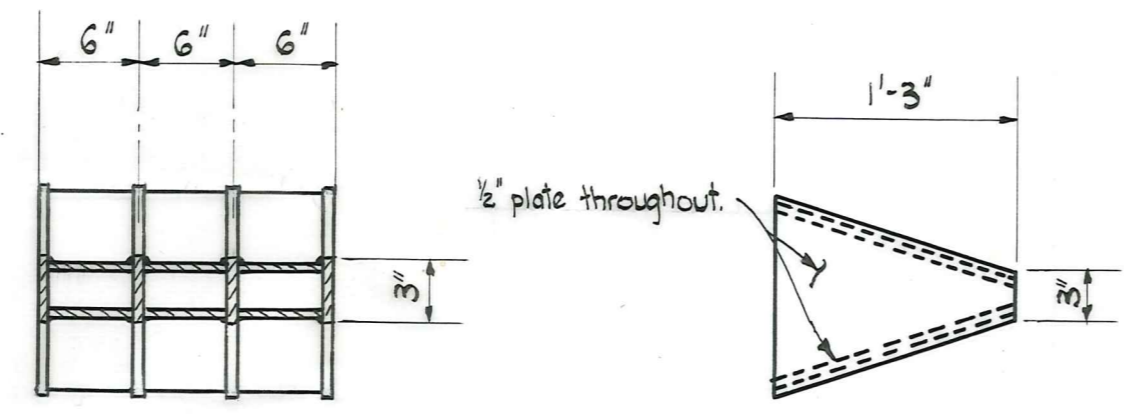


Scale: 1" to 1'-0"

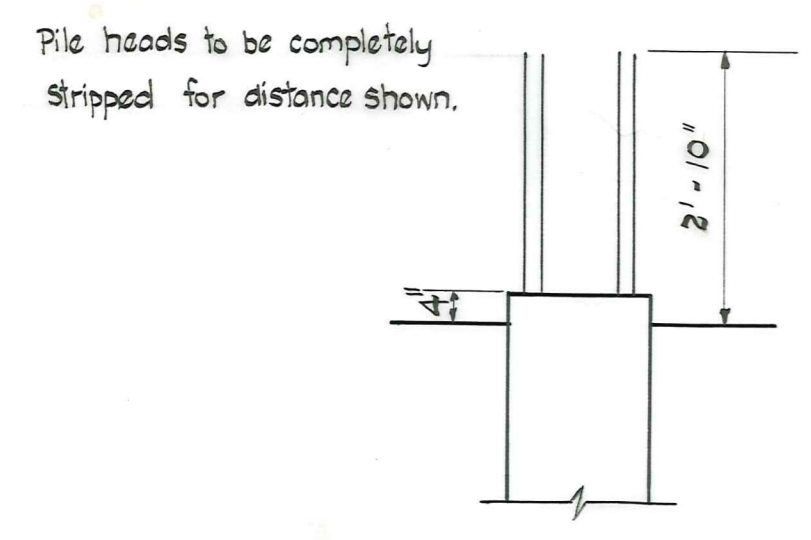


SECTION A-A
Scale: 1" to 1'-0"



PILE SHOE - ELEVATIONS
Scale: 1" to 1'-0"

No. of piles required :- 6
Contractor to provide lifting eyes
to suit his requirements.



PILE STRIPPING DETAIL
Scale: 1/2" to 1'-0"

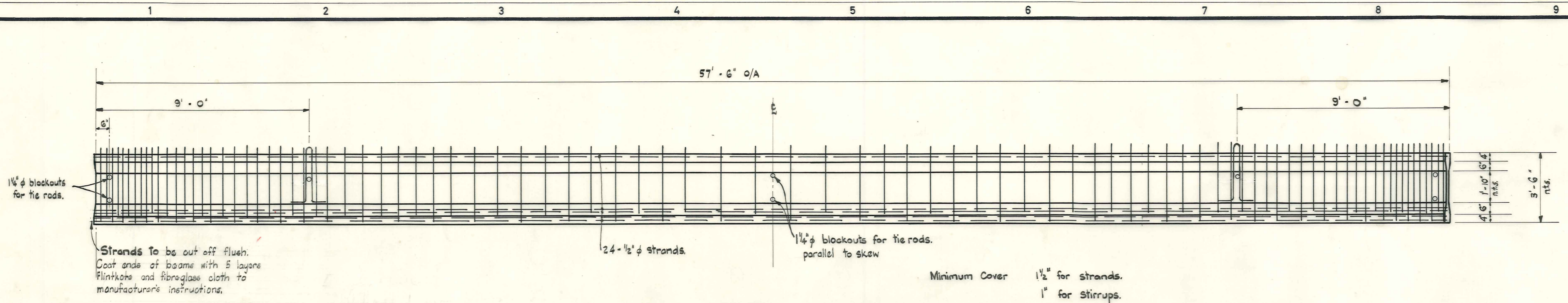
MANIOTOTO
COUNTY COUNCIL

STATE HIGHWAY 87
Capburn Bridge

Amendments.	NAME	Date.
Surveyed.		
Drawn.	R. Adarn.	Oct. '67
Calculations	I. Pairman	Oct. '67
Traced	R. Adam	Oct. '67
Checked.		
Approved.	<i>[Signature]</i>	Nov 67

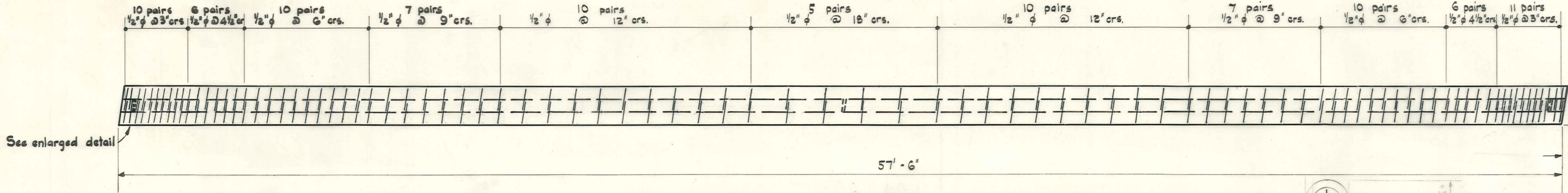
DUFFILL, WATTS & KING
CONSULTING CIVIL & STRUCTURAL ENGINEERS
DUNEDIN & INVERCARGILL N. Z.

File G/81
L. Book.
F. Book.
JOB No. 4799
Sheet 2 of 7



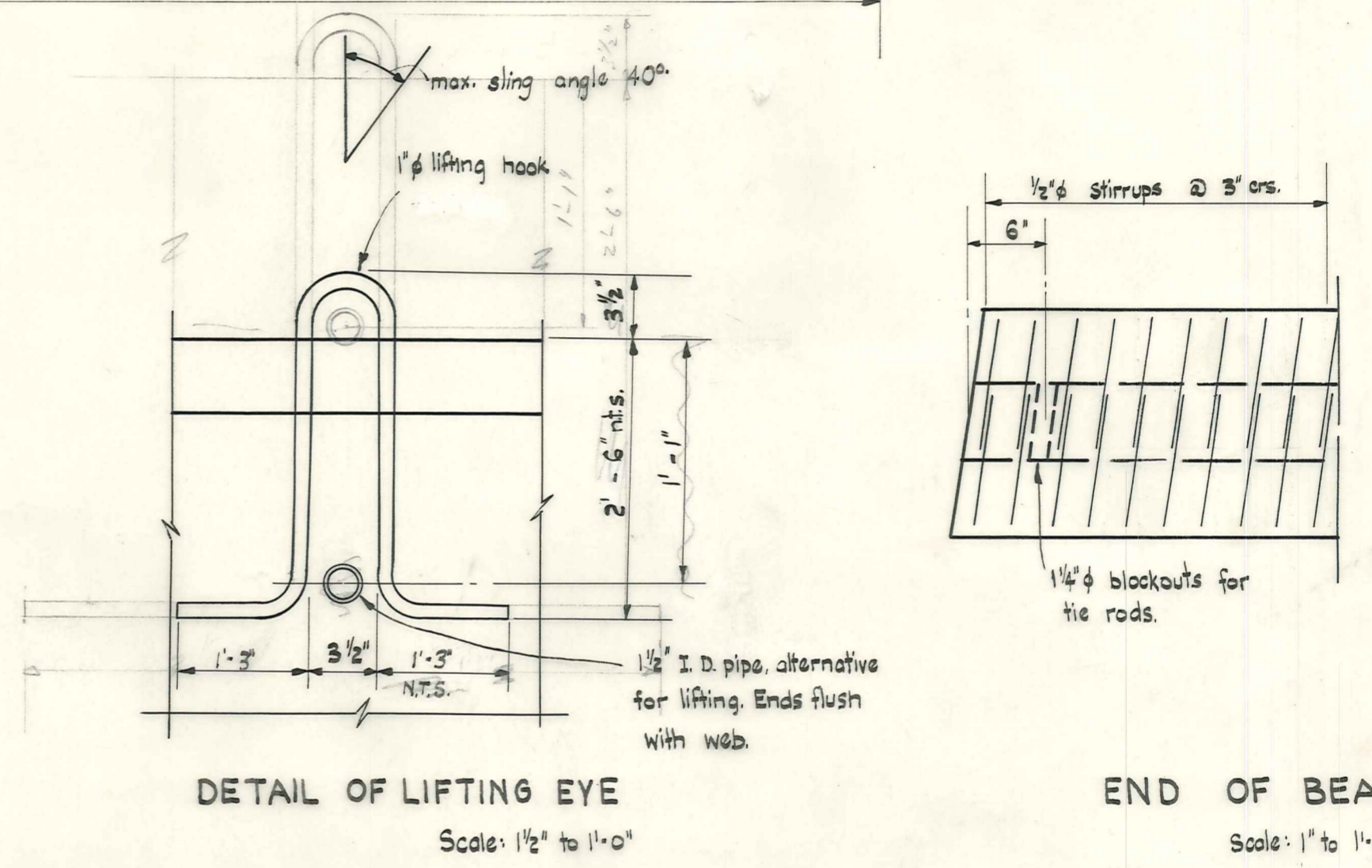
ELEVATION OF BEAM

Scale: 3/8" to 1'-0"



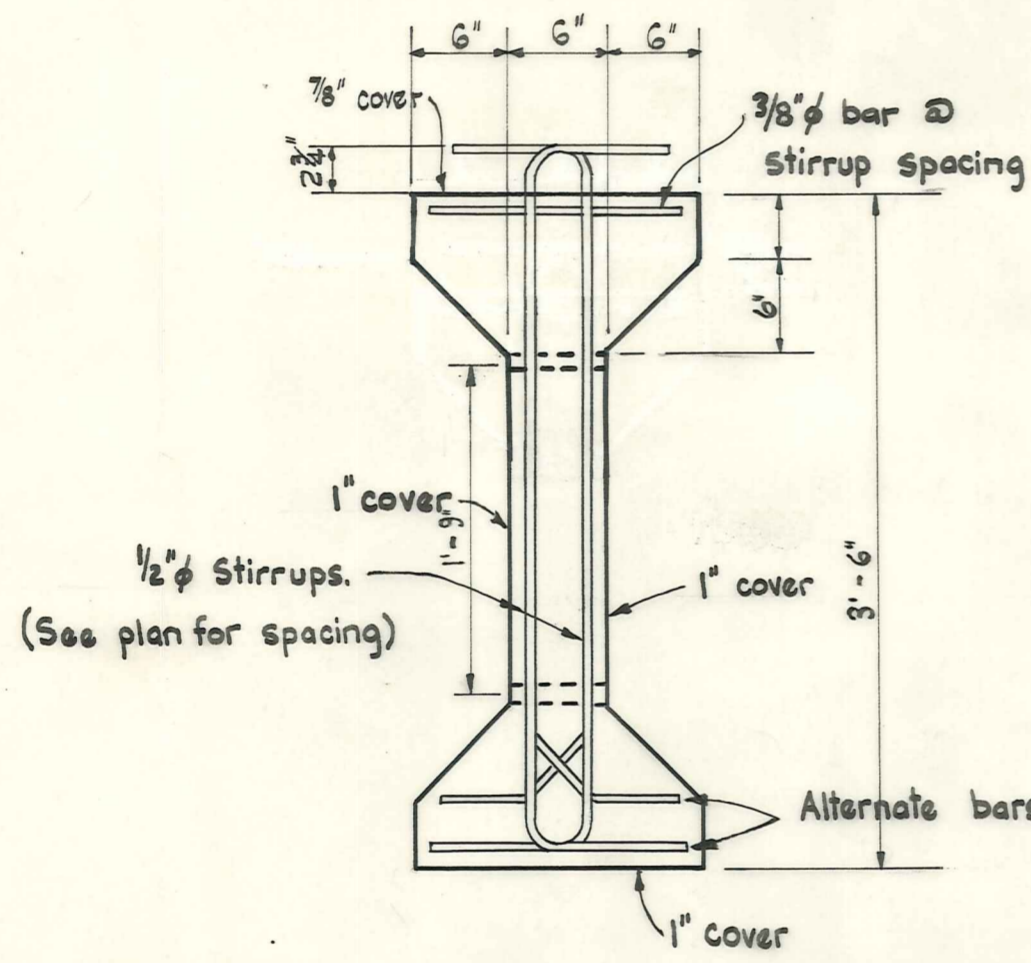
PLAN OF BEAM

Scale: 3/8" to 1'-0"

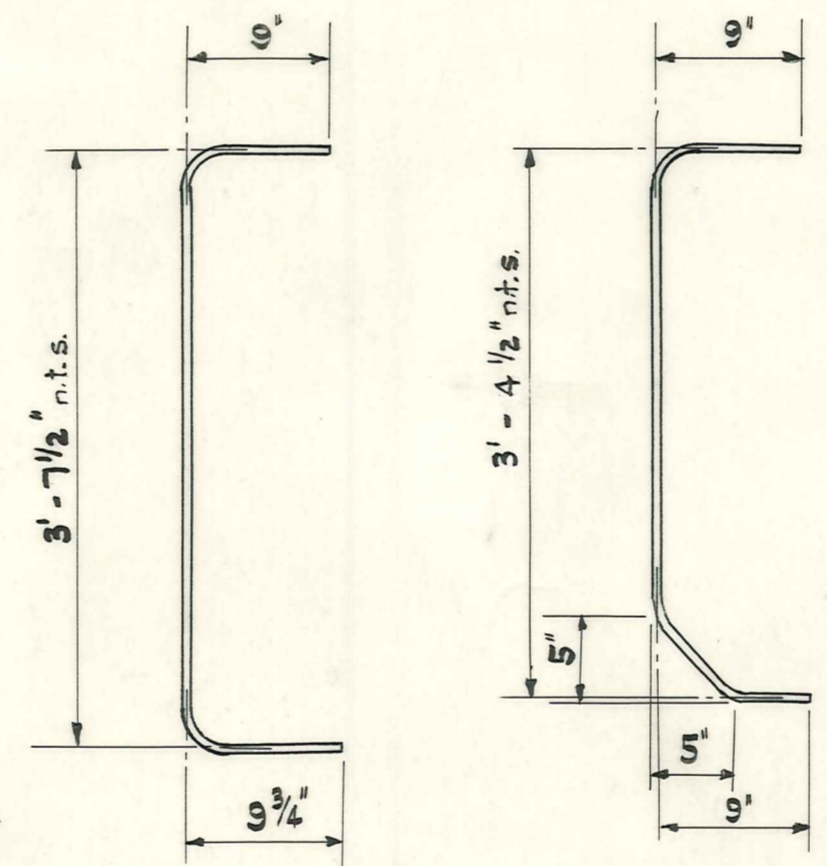
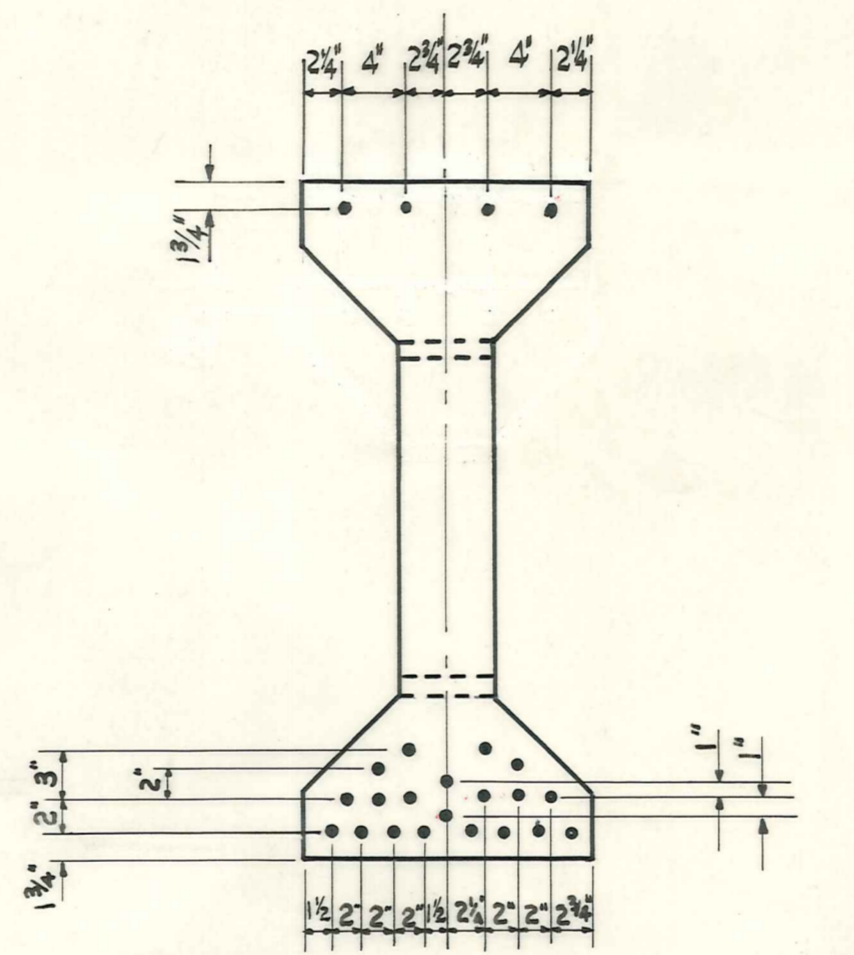


END OF BEAM

Scale: 1" to 1'-0"



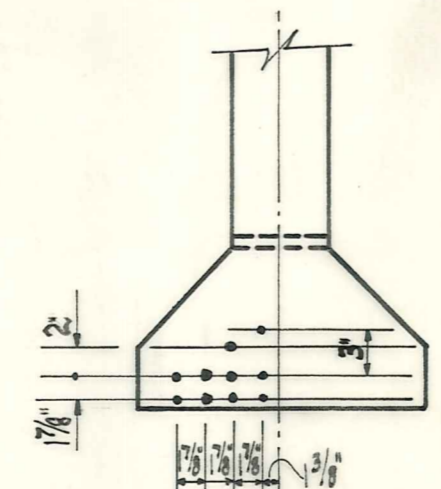
Note: Prestressing strands not shown.



NOTE: All reinforcing and lifting eyes—deformed steel.
For sling angles greater than 40° use 1 1/2" lifting hook.
Weight of beams approximately 12 tons.
No. of beams required: 5.

DESIGN DATA.

- Concrete:
 - Cylinder strength at 28 days 5,500 p.s.i.
 - Cylinder strength at transfer 5000 p.s.i.
- Tolerances:
 - Length $\pm 1/4"$
 - Concrete Cross section $\pm 1/8"$
 - Strand positions $\pm 1/16"$ at ends.
- Strands:
 - Load in each strand at transfer 25,000 lb.
 - Load in each strand after losses 21,000 lb.



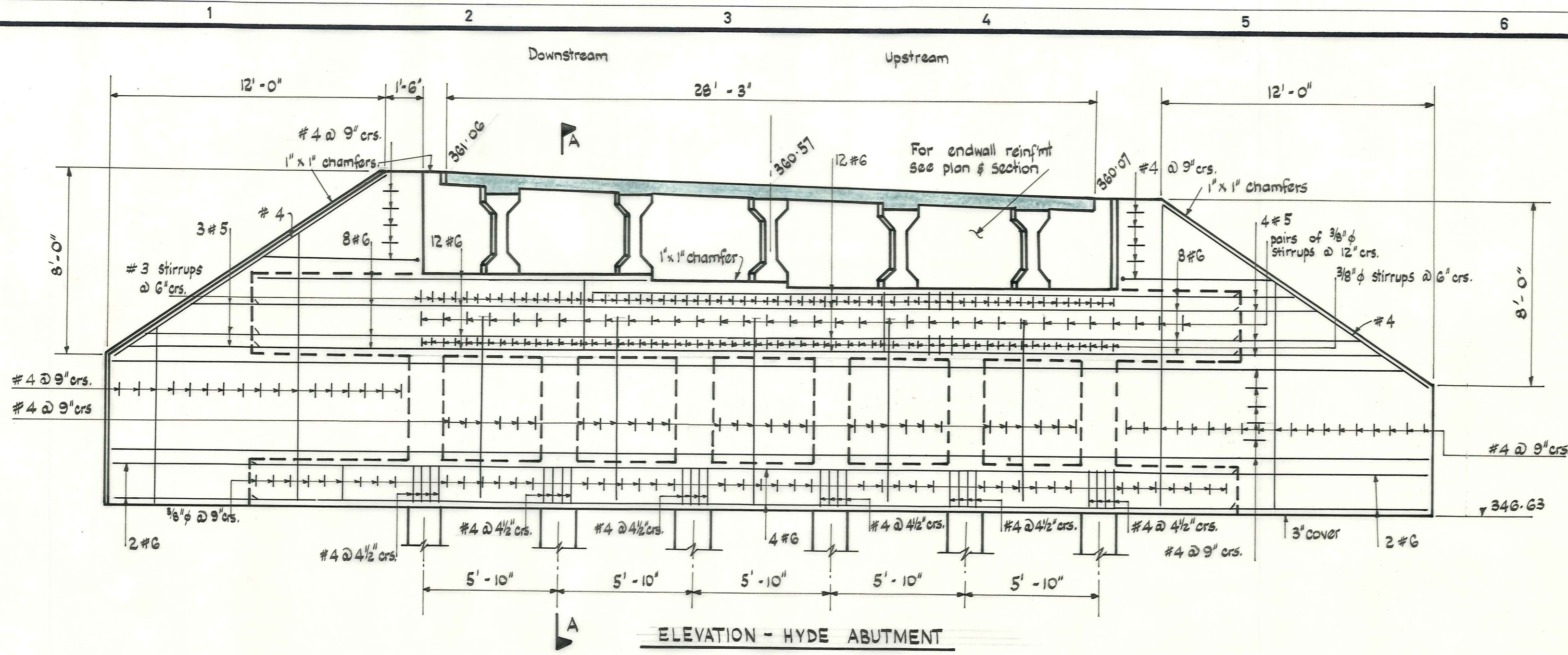
MANIOTOTO
COUNTY COUNCIL

STATE HIGHWAY 87
Capburn Bridge

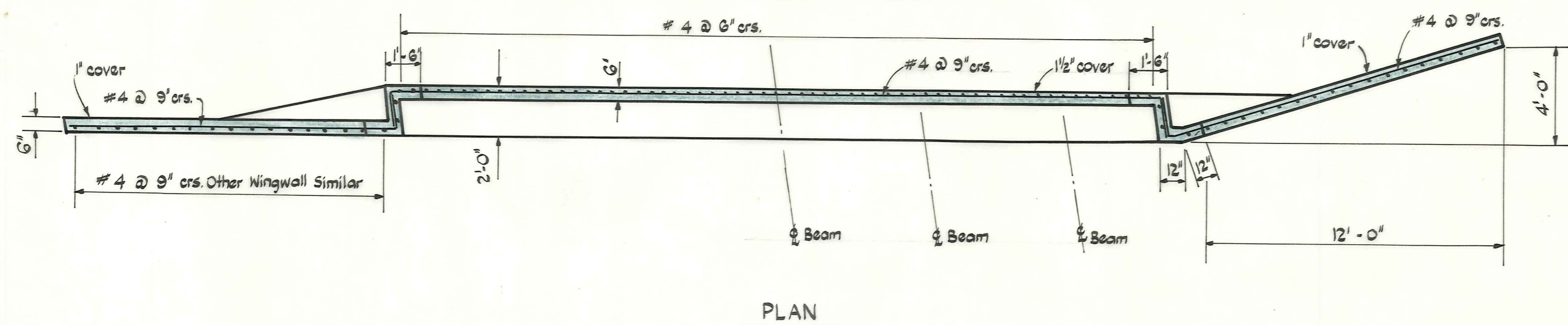
AMENDMENTS				NAME		DATE
No.	By	Date	Description	Apprd.	Surveyed	DATE
	R.W.A.	Nov. 67	Depth of beam - 3'-6"		D. Jack	7/67
					R. Adam	
					Calculations I.R. Paimam	7/67
					Traced R. Adam	
					Checked	
					Approved	

DUFFILL, WATTS & KING
CONSULTING CIVIL & STRUCTURAL ENGINEERS
DUNEDIN & INVERCARGILL N.Z.

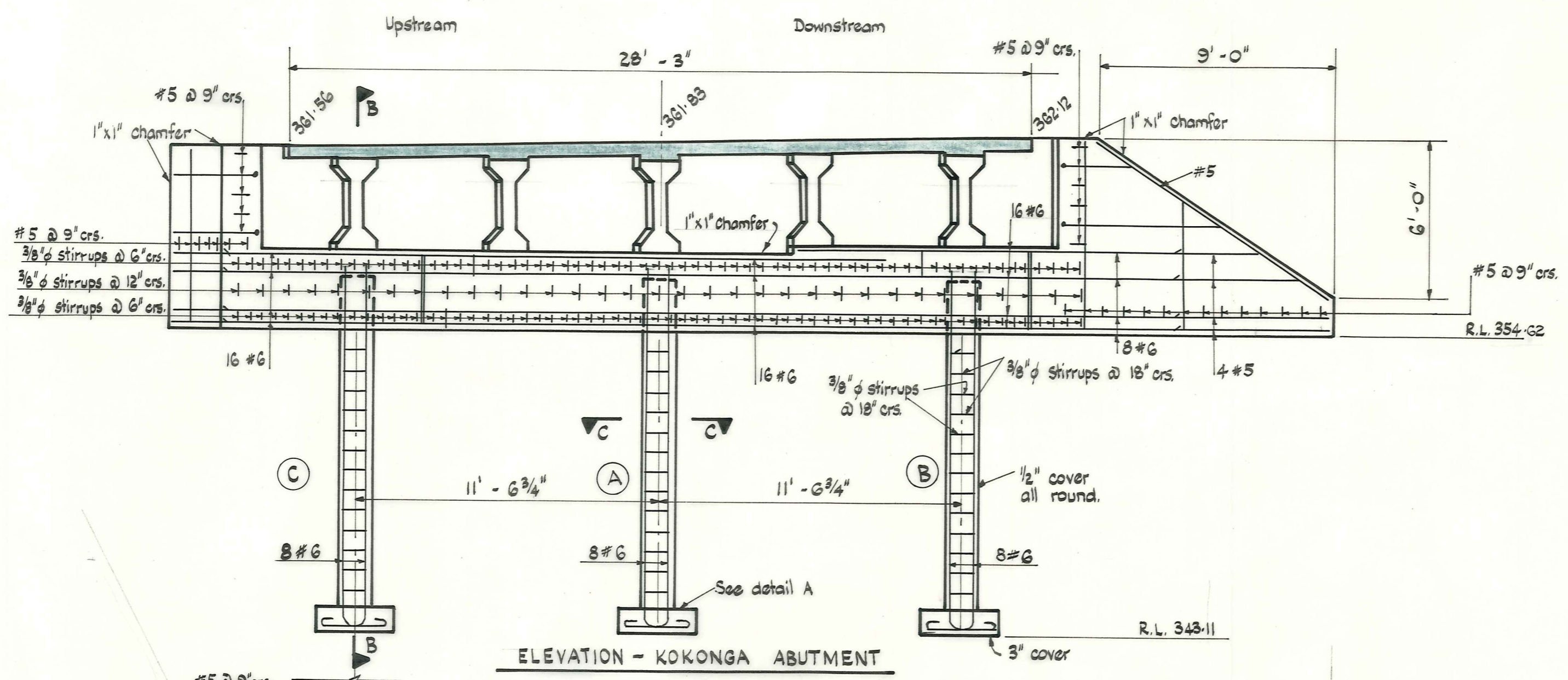
File 6/81
L.B.K.
F.B.K.
JOB No. 4799
Sheet 3 of 7 Sheets



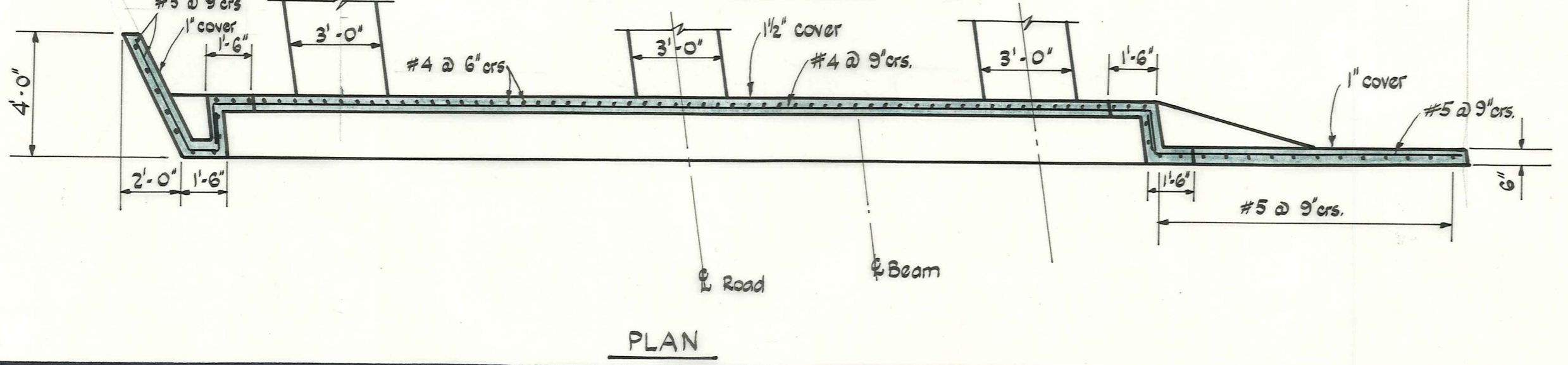
ELEVATION - HYDE ABUTMENT



PLAN

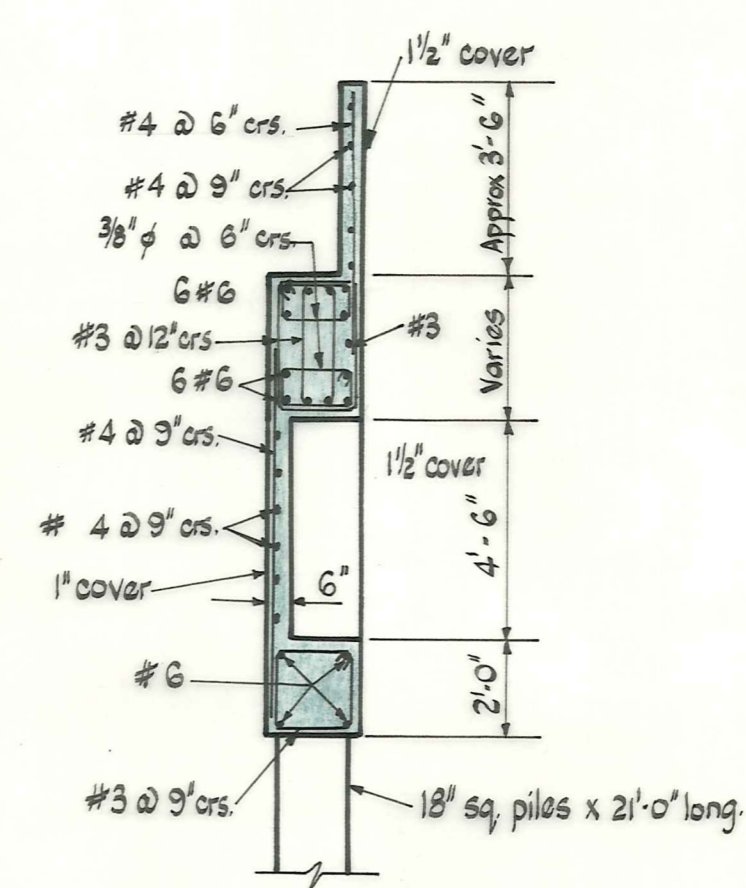


ELEVATION - KOKONGA ABUTMENT

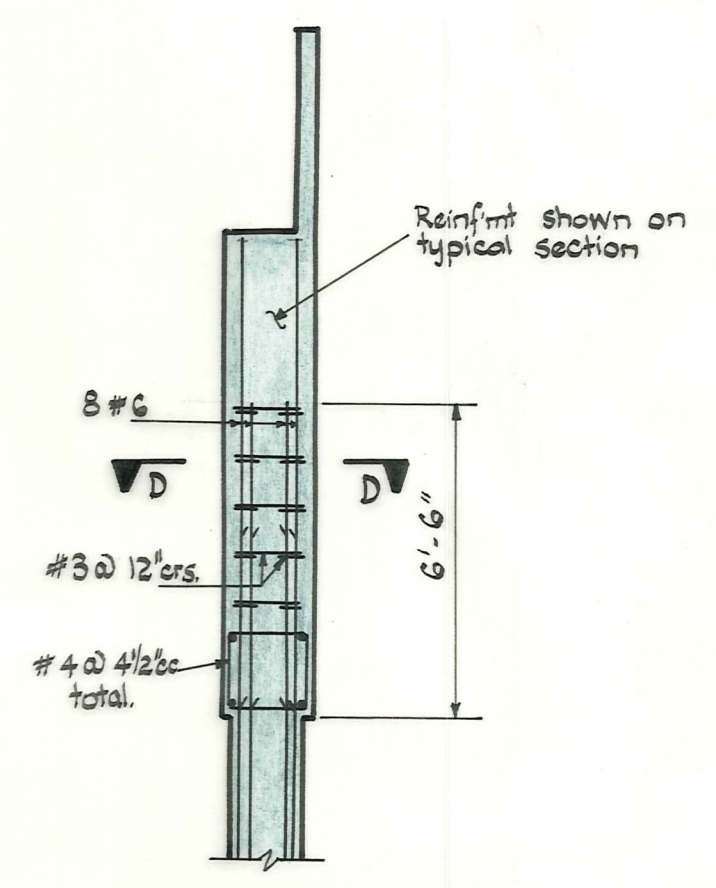


PLAN

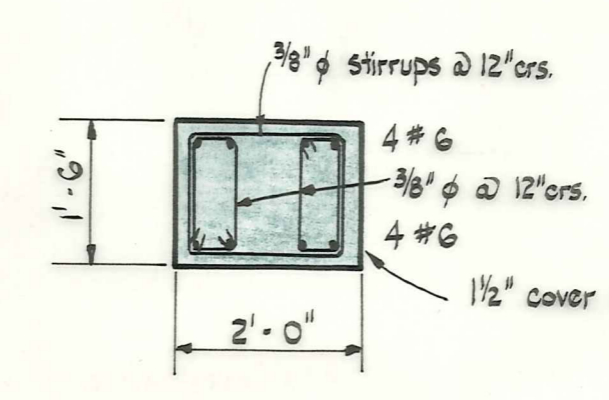
Note: Hyde Abutment must not be filled against until the deck system is complete and cured 14 days.



TYPICAL SECTION

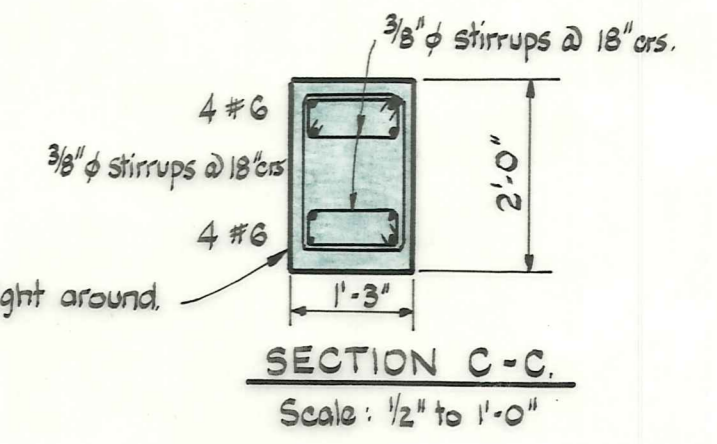


SECTION A-A



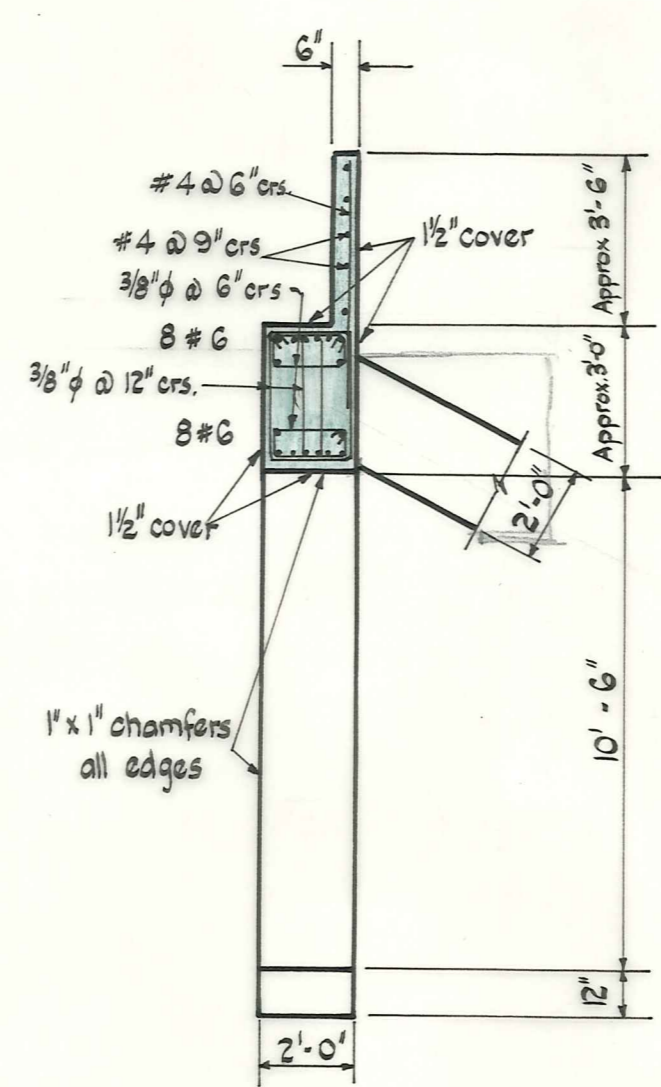
SECTION D-D

Scale: 1/2" to 1'-0"

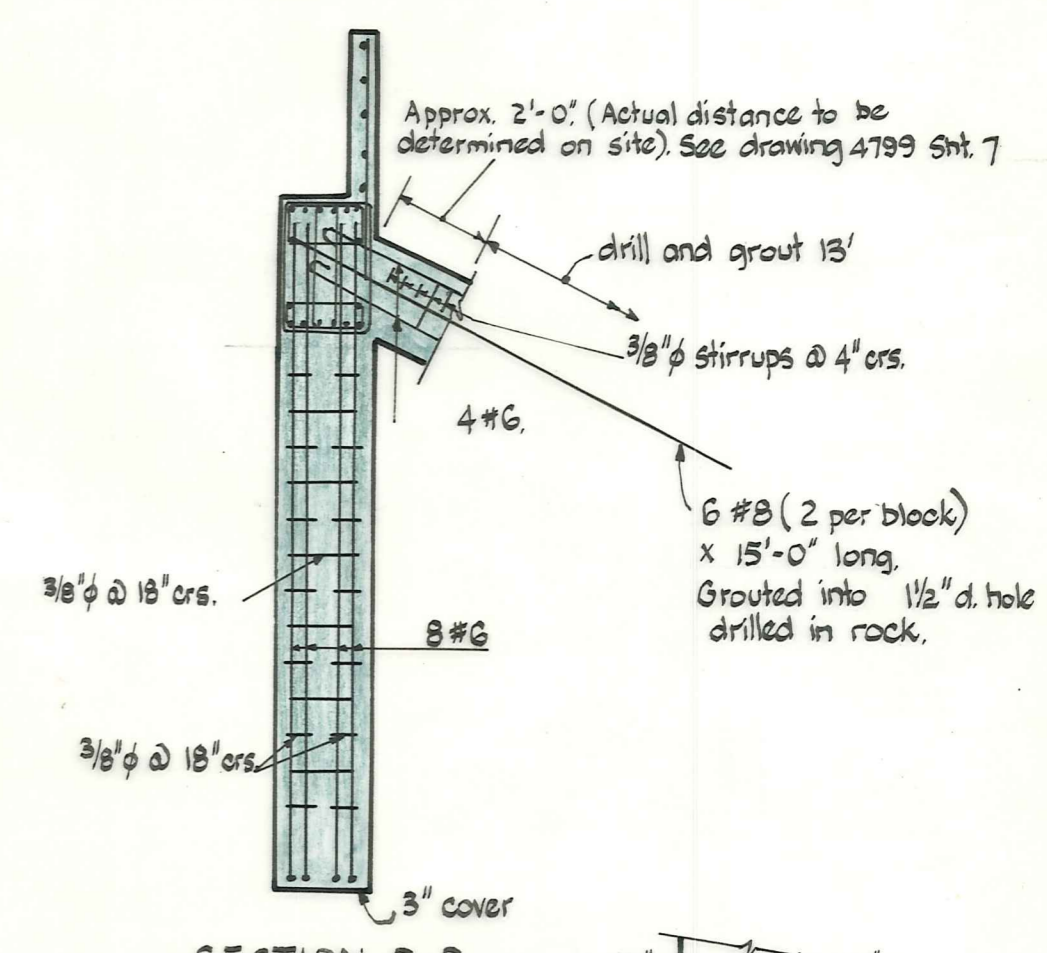


SECTION C-C

Scale: 1/2" to 1'-0"



TYPICAL SECTION



SECTION B-B

3/8" x 2" x 2" plate on 3/4" rod welded right round both sides.

3/8" rod grouted in 1 1/2" hole

DETAIL A

Scale: 1/2" to 1'-0"

Scale: 1/4" to 1'-0" except where otherwise shown.

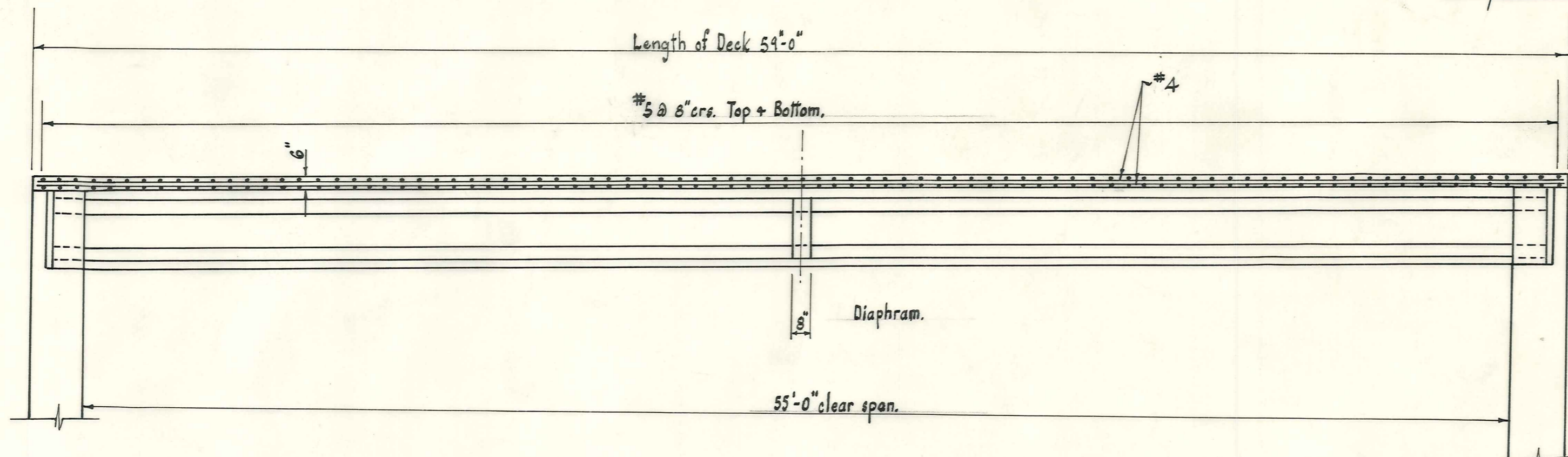
MANIOTOTO COUNTY COUNCIL

STATE HIGHWAY 87
Capburn Bridge

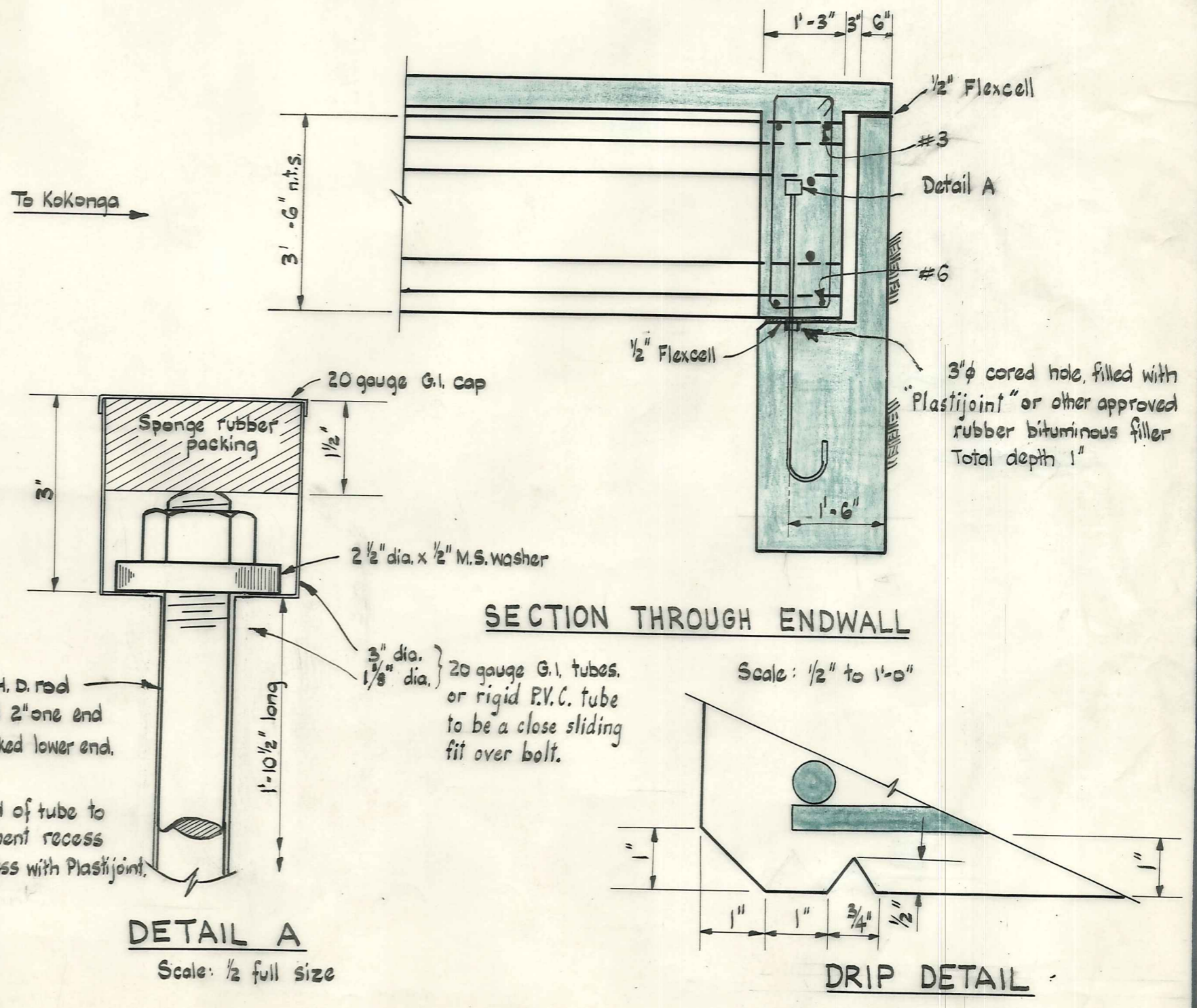
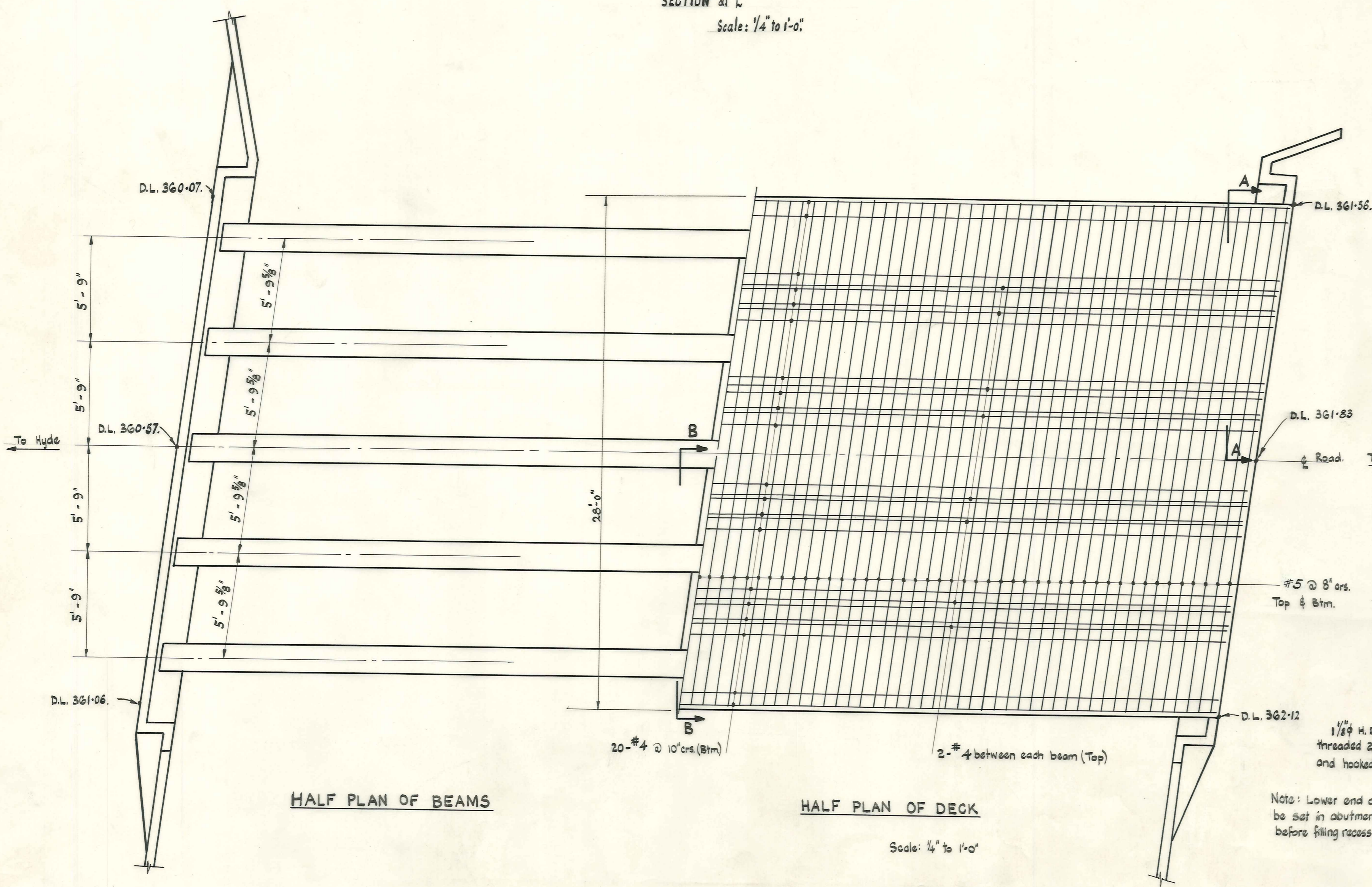
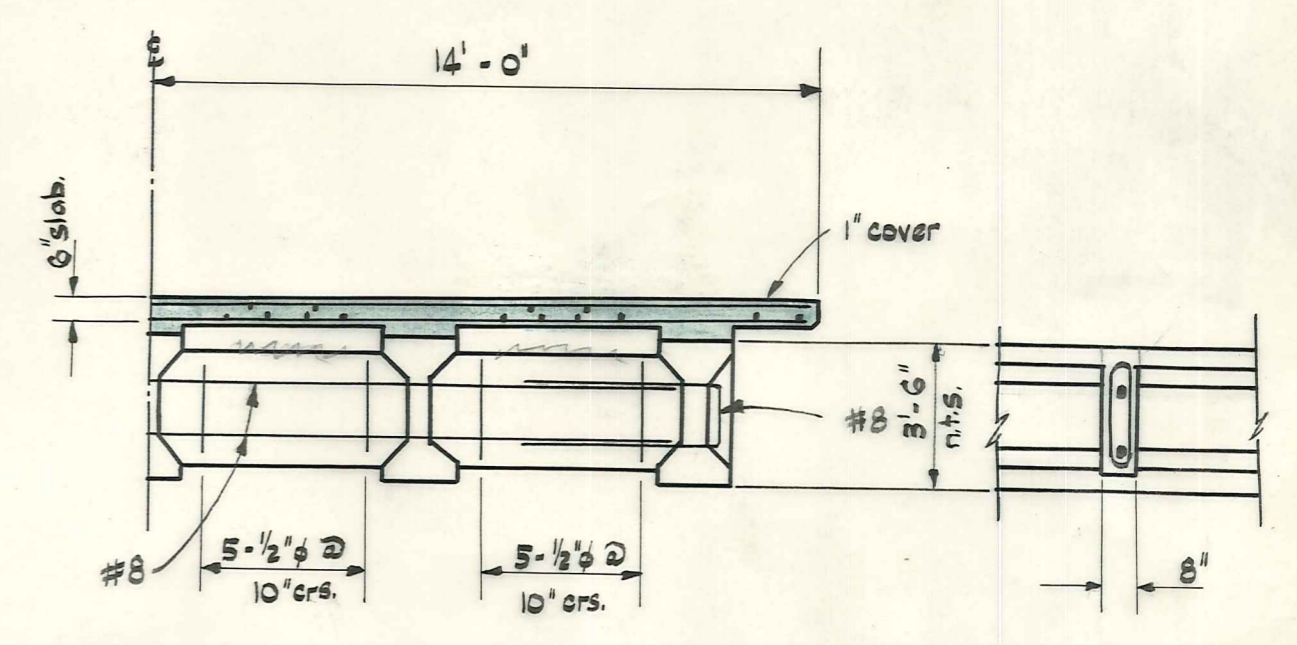
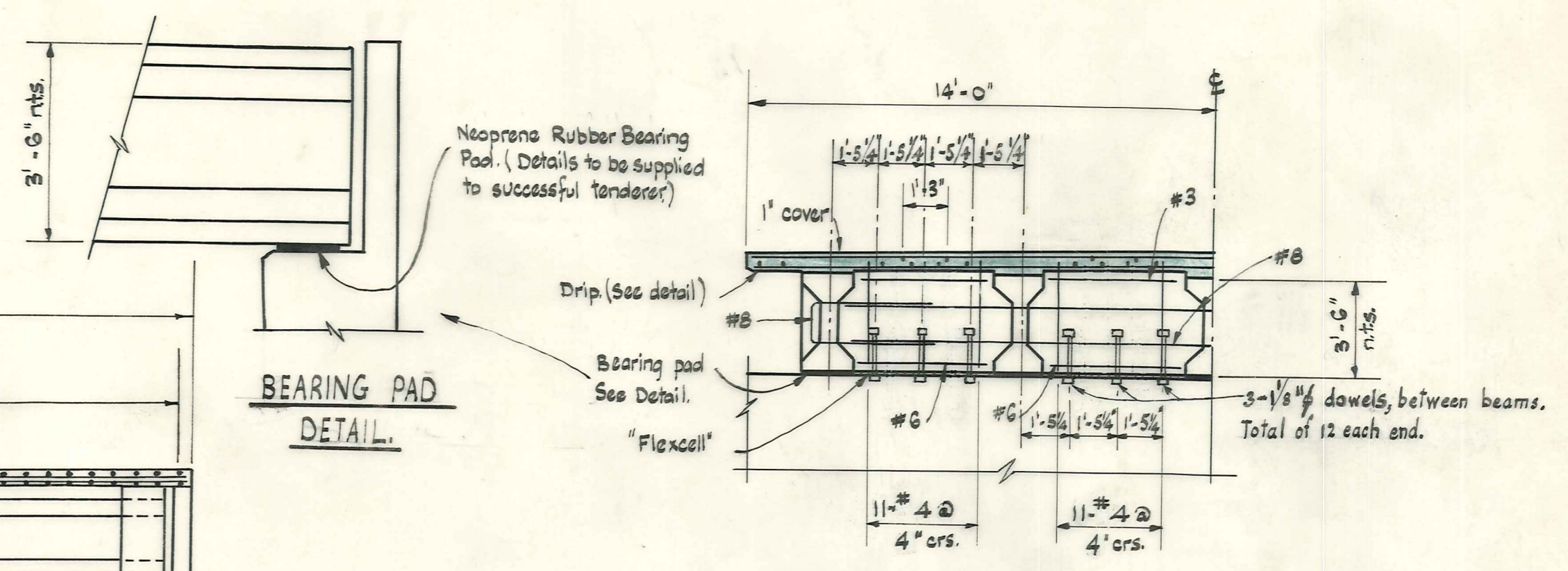
AMENDMENTS				NAME		DATE
No.	By	Date	Description	Apprd.		
1	R.W.A.	5/1/67	Redrawn for 42" Beams.		D. Jack	Oct. 67
					R. Adam	" "
					I. Palmer	" "
					R. Aylam	Nov. 67

DUFFILL, WATTS & KING
CONSULTING CIVIL & STRUCTURAL ENGINEERS
DUNEDIN & INVERCARGILL N.Z.

File G/81
JOB No. 4799
L. Bk.
F. Bk.
Sheet 4 of 7 Sheets



SECTION at center line
Scale: 1/4" to 1'-0"



MANIOTOTO
COUNTY COUNCIL

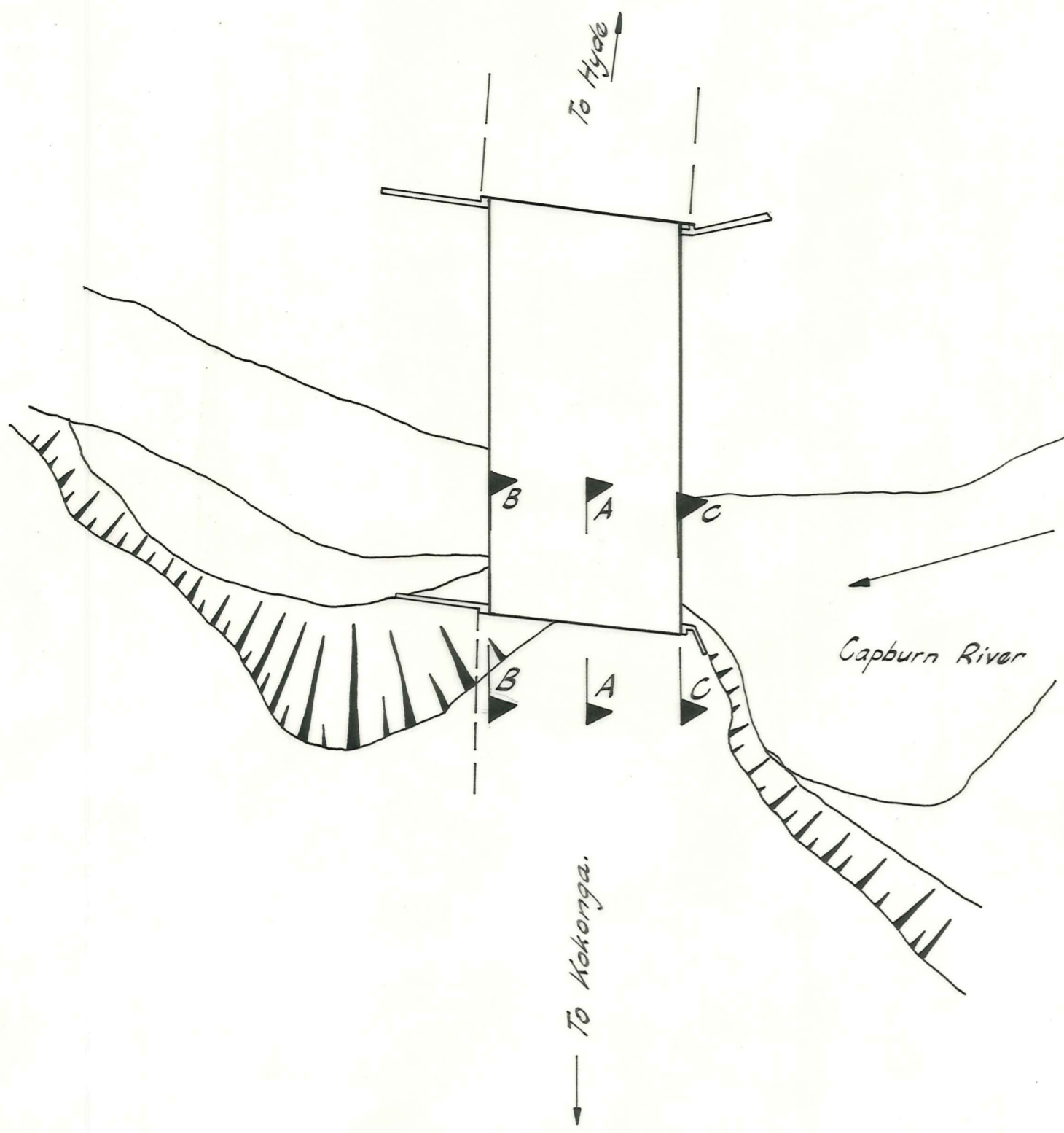
STATE HIGHWAY 87
Capburn Bridge

AMENDMENTS				NAME		DATE	
No.	By	Date	Description	Apprd.	Surveyed	Drawn	DATE
	R.W.A	Nov 67	Amended for 3'-6" Beam			R. Adam	7/67
						R. Adam	7/67
							Nov 67

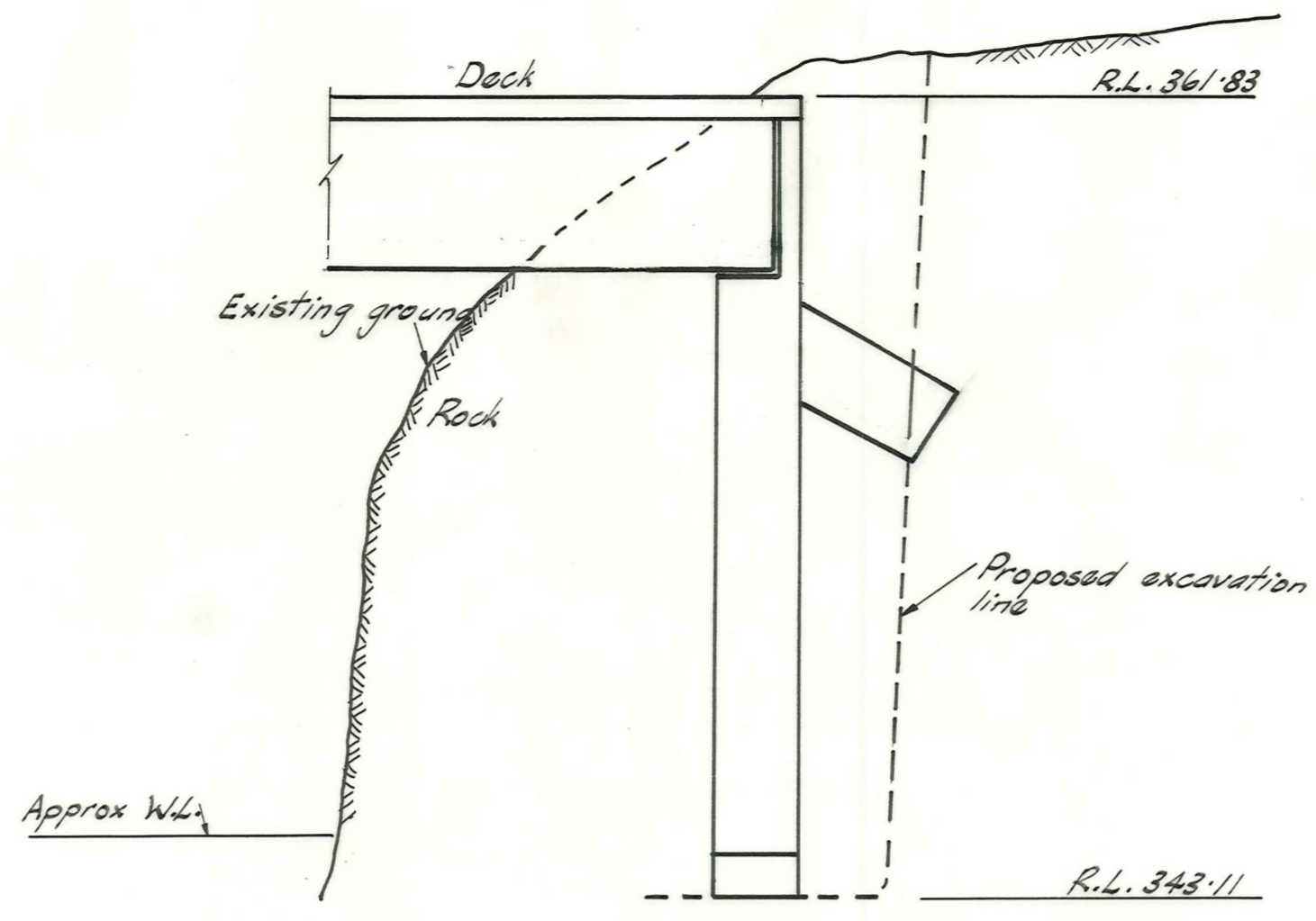
DUFFILL, WATTS & KING
CONSULTING CIVIL & STRUCTURAL ENGINEERS
DUNEDIN & INVERCARGILL N.Z.

File 6/81
L.Bk.
F.Bk.

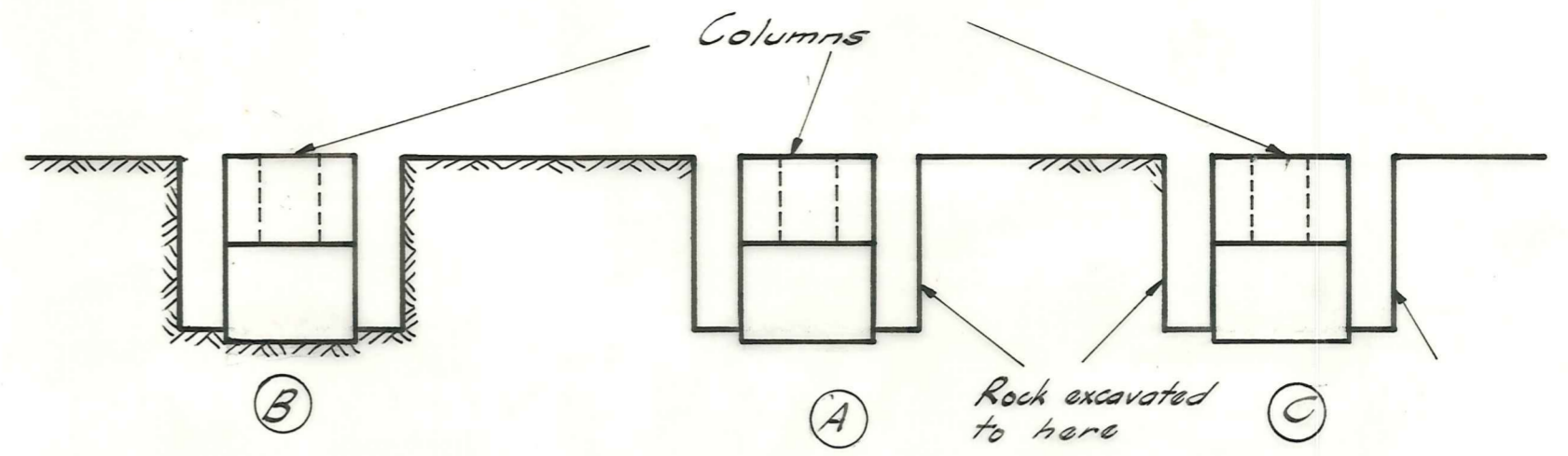
JOB No. 4799
Sheet 5 of 7 Sheets



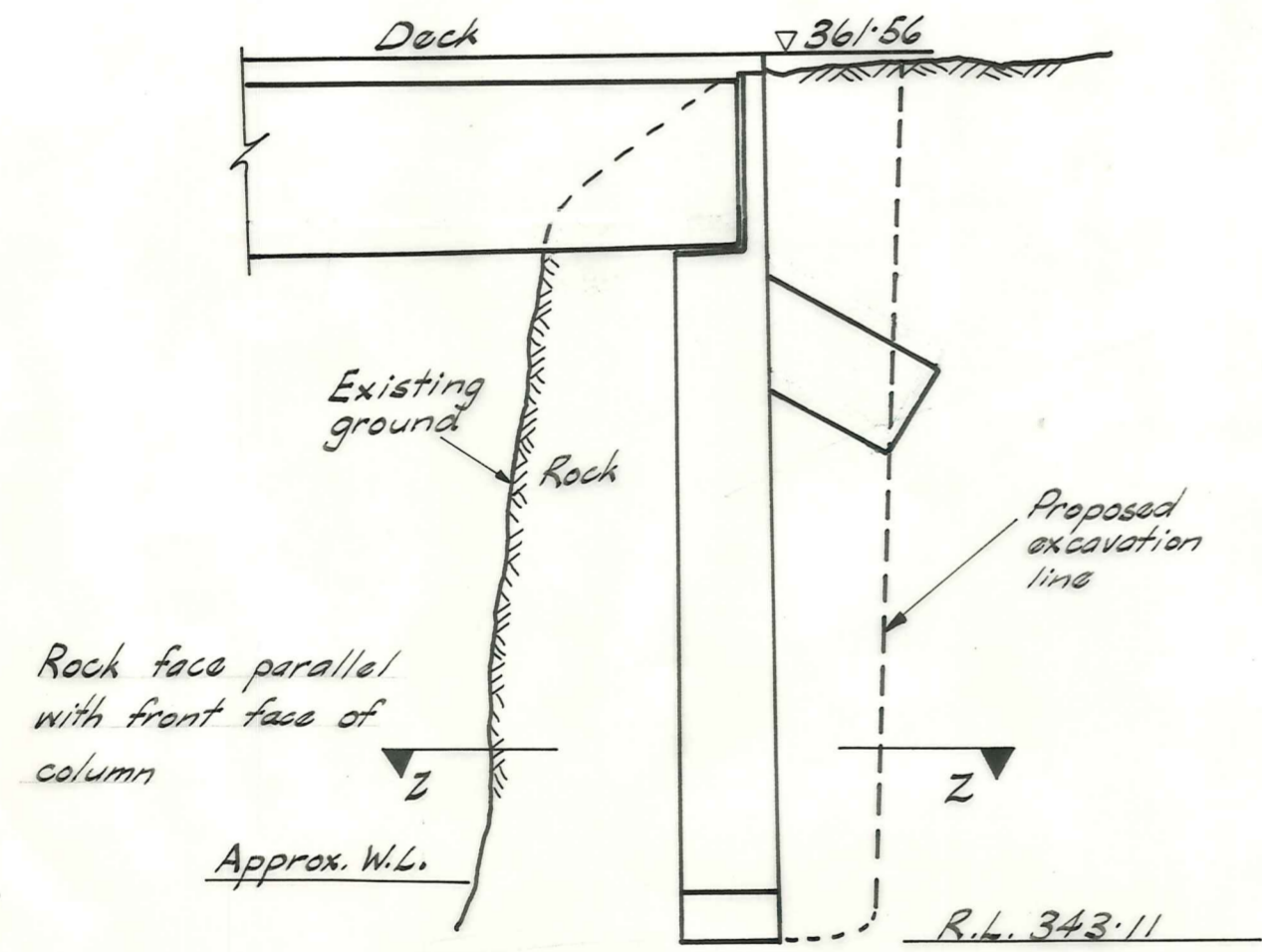
PLAN
Scale 20' to 1"



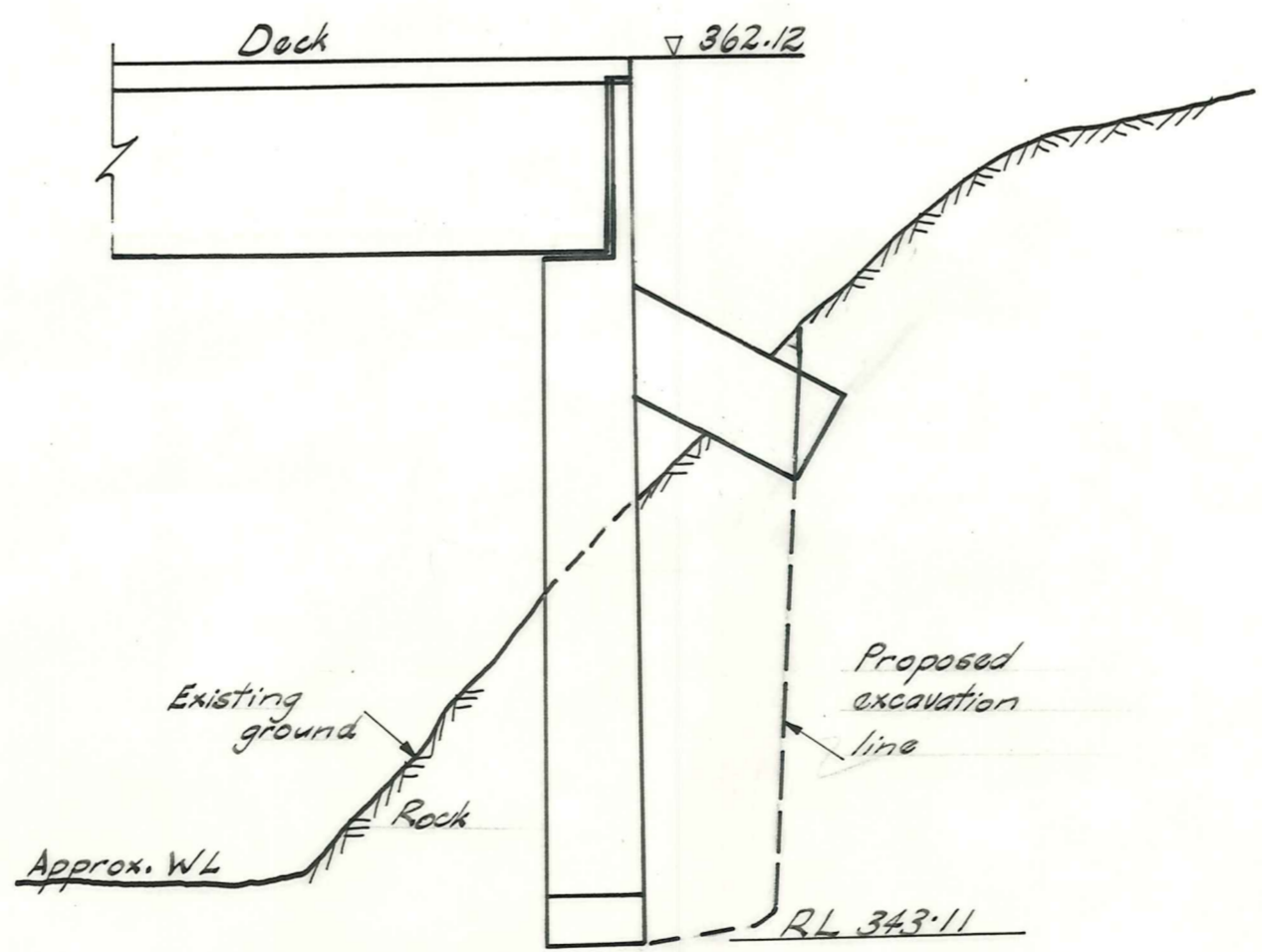
SECTION A-A
Scale: 1/4" to 1'-0"



SECTION Z-Z.
Scale: 1/4" to 1'-0"



SECTION C-C
Scale 1/4" to 1'-0"



SECTION B-B
Scale: 1/4" to 1'-0"

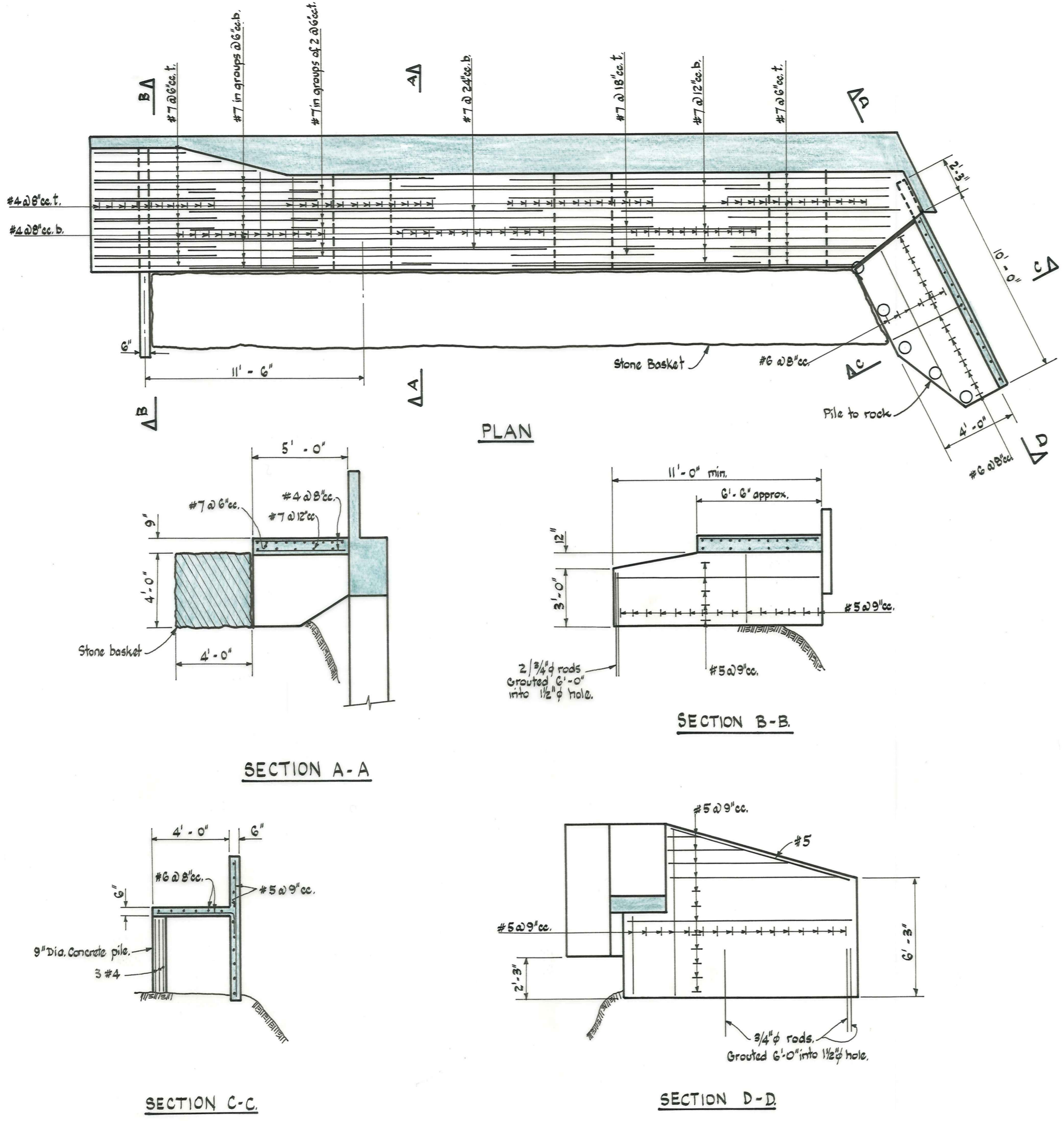
MANIOTOTO
COUNTY COUNCIL

STATE HIGHWAY 87
Capburn Bridge

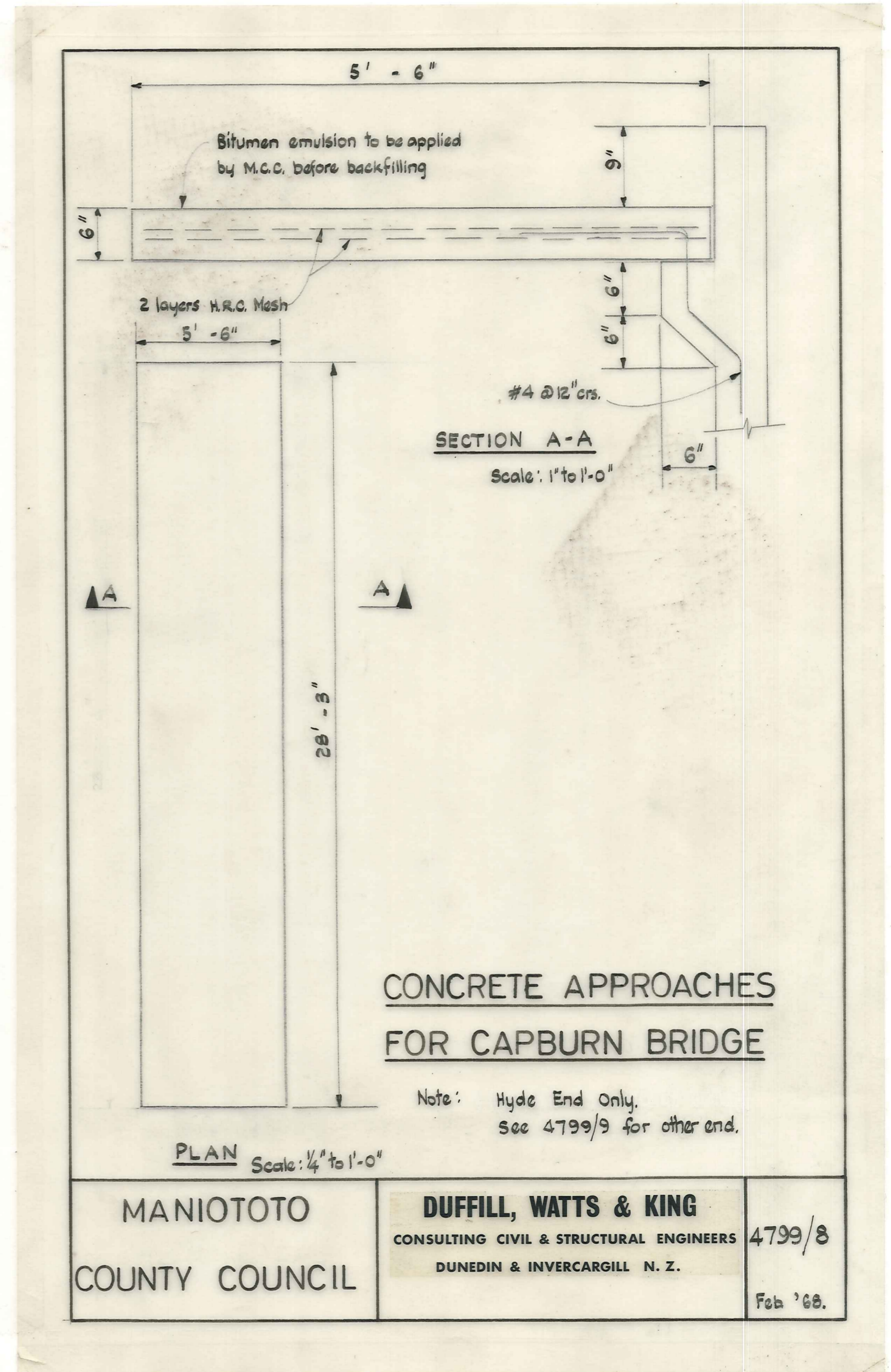
AMENDMENTS					NAME		DATE	
No.	By	Date	Description	Apprd.	Surveyed	D. Jack.	Oct '67	
	R.W.A	Nov '67	Amended for 3'-6" Beam		Drawn	"	"	
					Calculations	"	"	
					Traced	W. Railton	Nov '67	
					Checked			
					Approved	R.W.A	"	

DUFFILL, WATTS & KING
CONSULTING CIVIL & STRUCTURAL ENGINEERS
DUNEDIN & INVERCARGILL N.Z.

File 6/81
L.Bk.
JOB No. 4799
F.Bk.
Sheet 7 of 7 Sheets



CONCRETE APPROACH FOR KOKONGA ABUTMENT.



MANIOTOTO COUNTY COUNCIL	DUFFILL, WATTS & KING CONSULTING CIVIL & STRUCTURAL ENGINEERS DUNEDIN & INVERCARGILL N.Z.	4799/8
		Feb '68.