
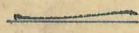




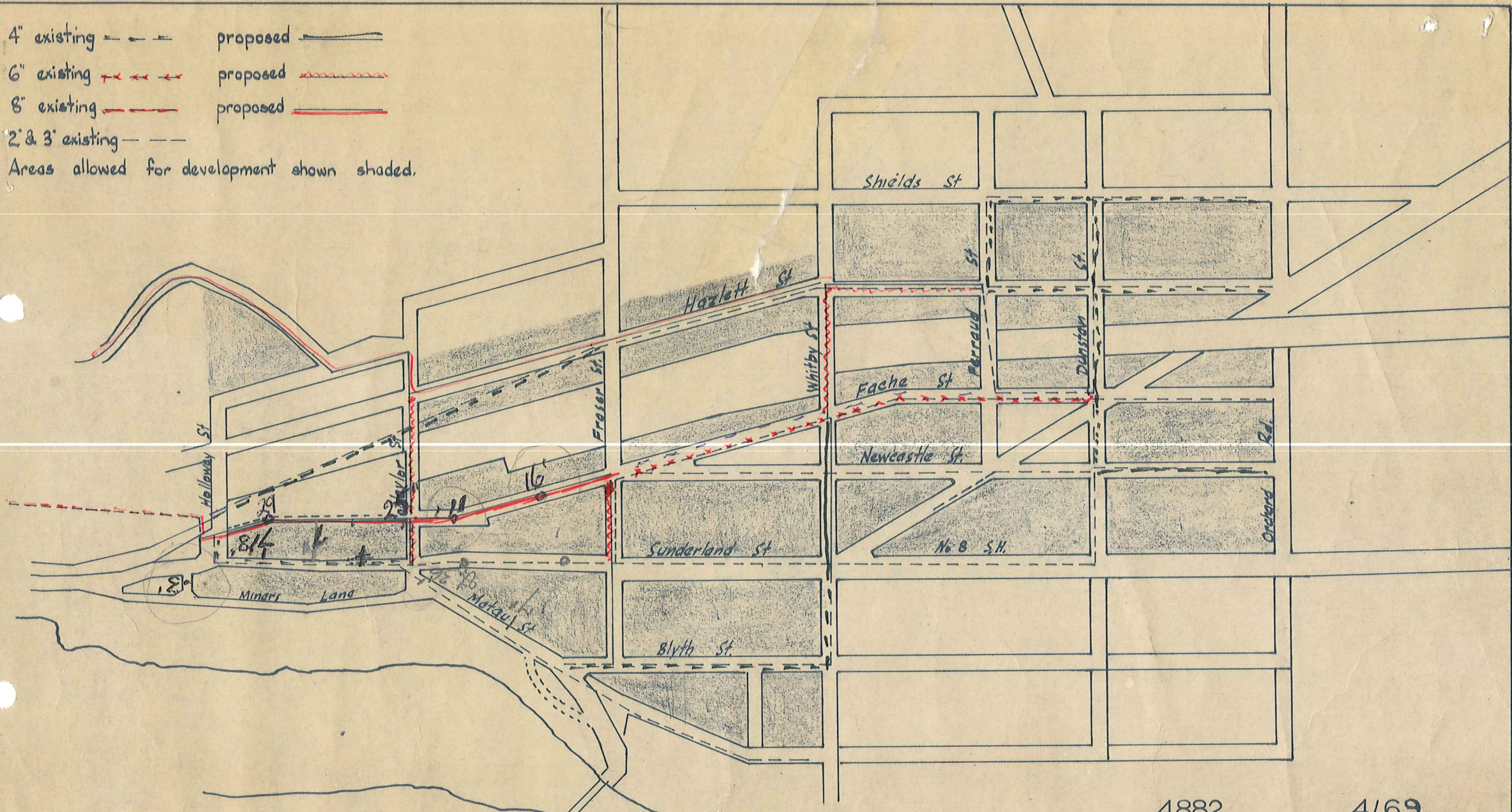
4" existing  proposed 

6" existing  proposed 

8" existing  proposed 

2' & 3' existing 

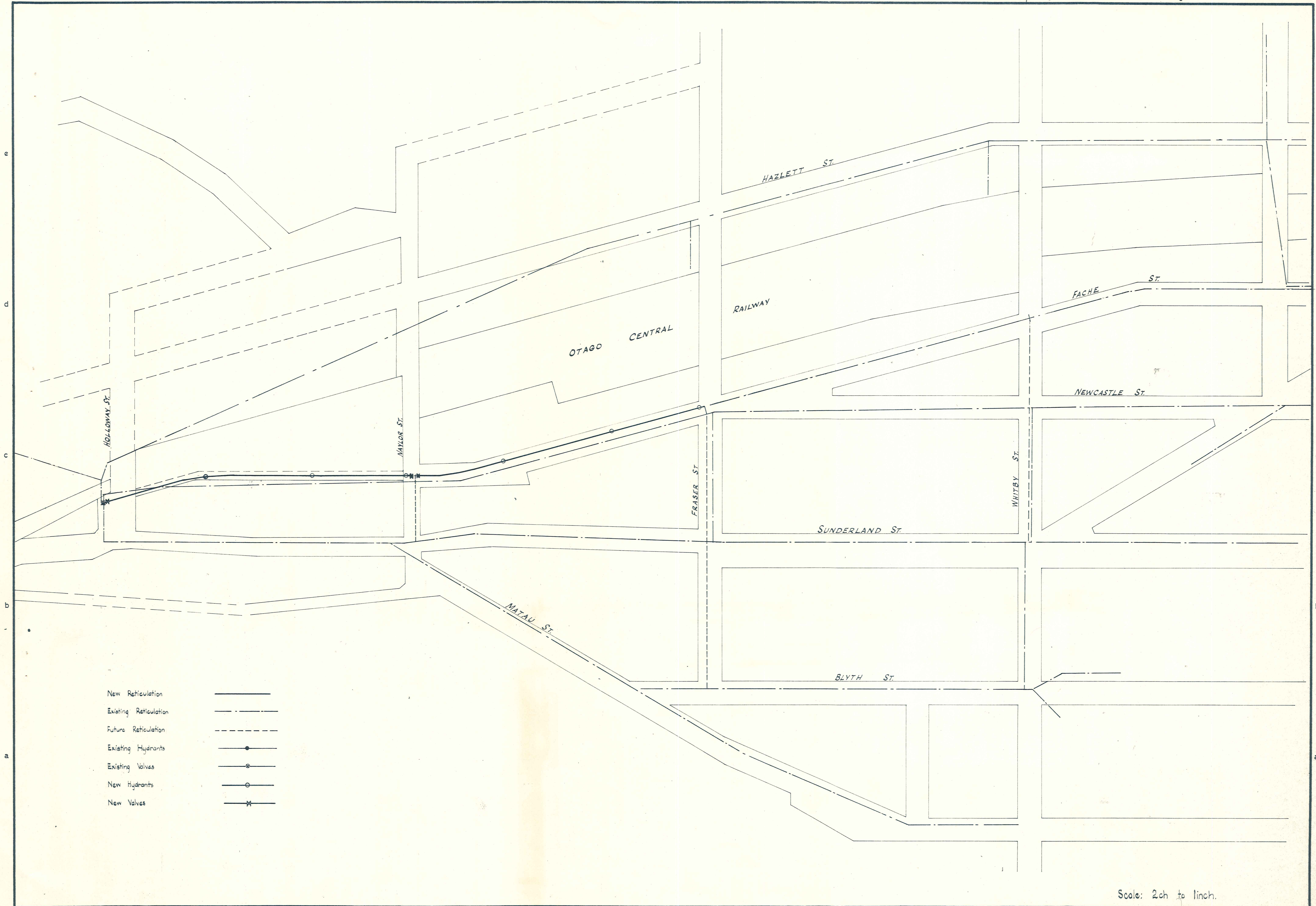
Areas allowed for development shown shaded.



4882 4/69
DUFFILL, WATTS & KING

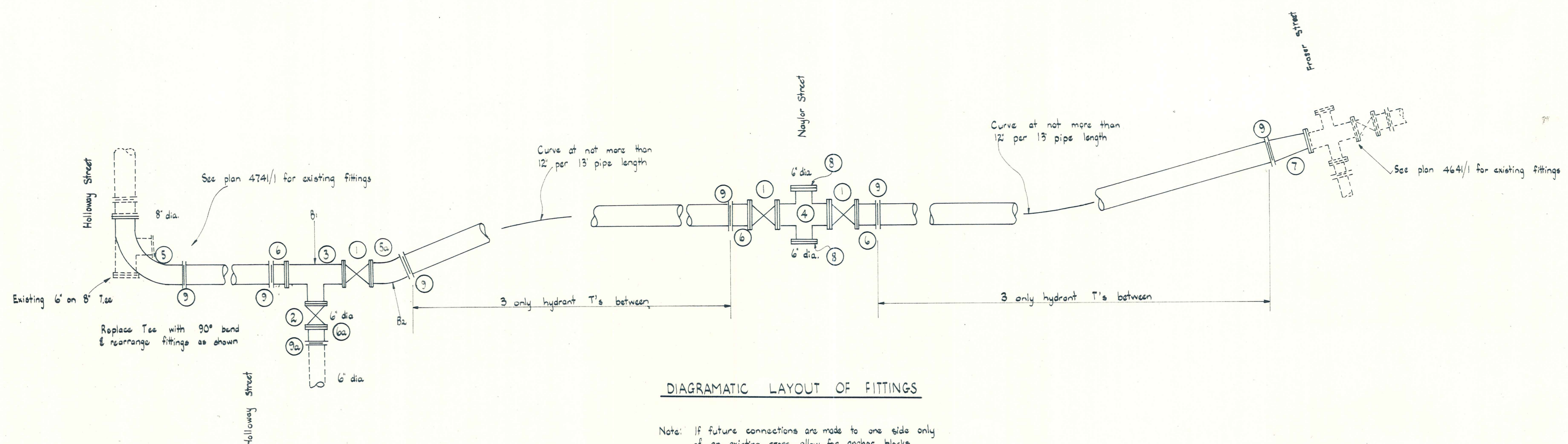
CONSULTING CIVIL & STRUCTURAL ENGINEERS

DUNEDIN & INVERCARGILL N. Z.



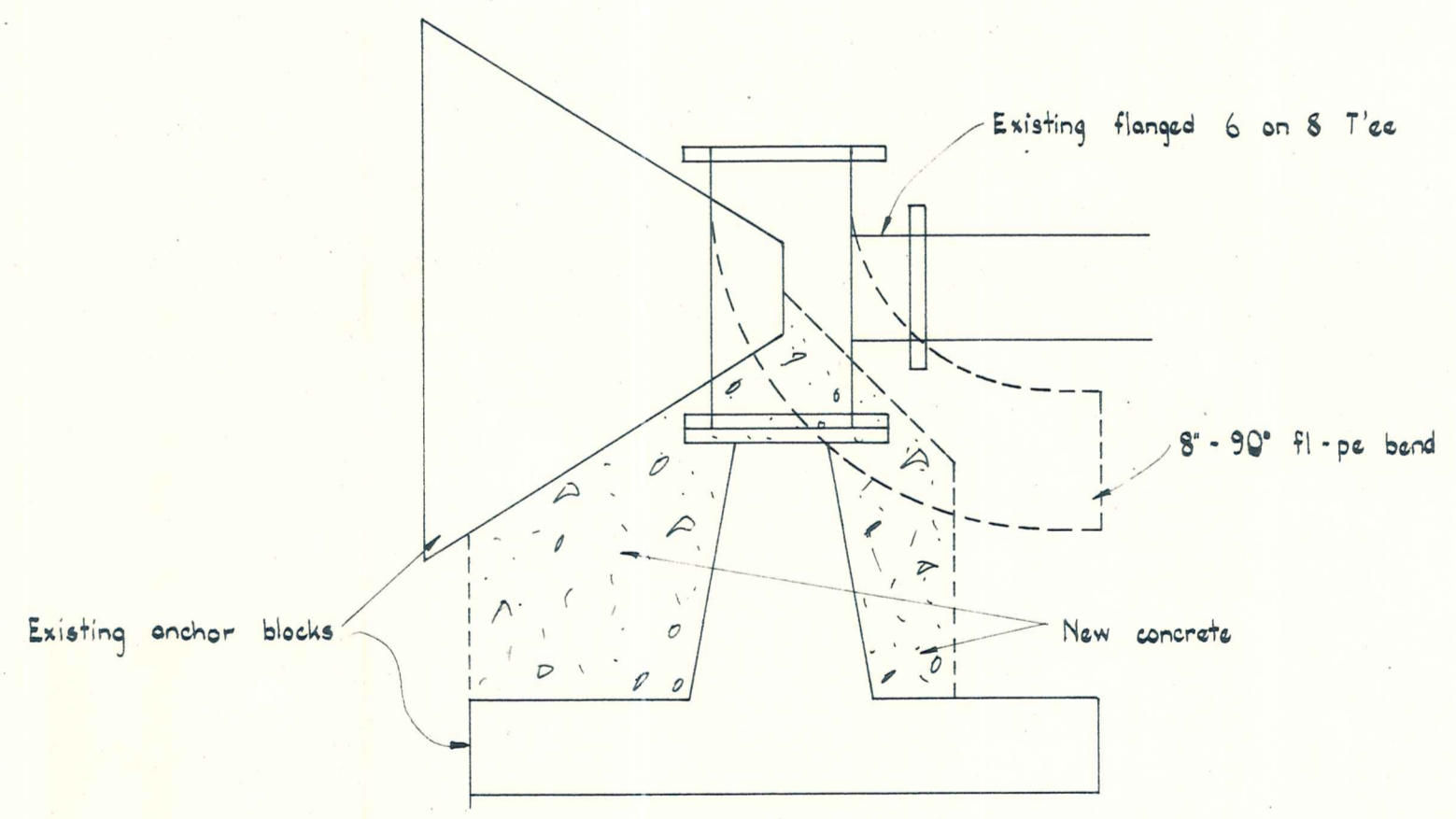
Scale: 2ch to 1inch.

VINCENT COUNTY COUNCIL	CLYDE WATER RETICULATION 1968/69.	AMENDMENTS	NAME	DATE	DUFFILL, WATTS & KING	File 4/68	JOB No.
		No. By Date Description Apprd. Surveyed			CONSULTING CIVIL & STRUCTURAL ENGINEERS	L. Bk.	4882
					DUNEDIN & INVERCARGILL N.Z.	F. Bk.	Sheet 1 of 3 Sheets



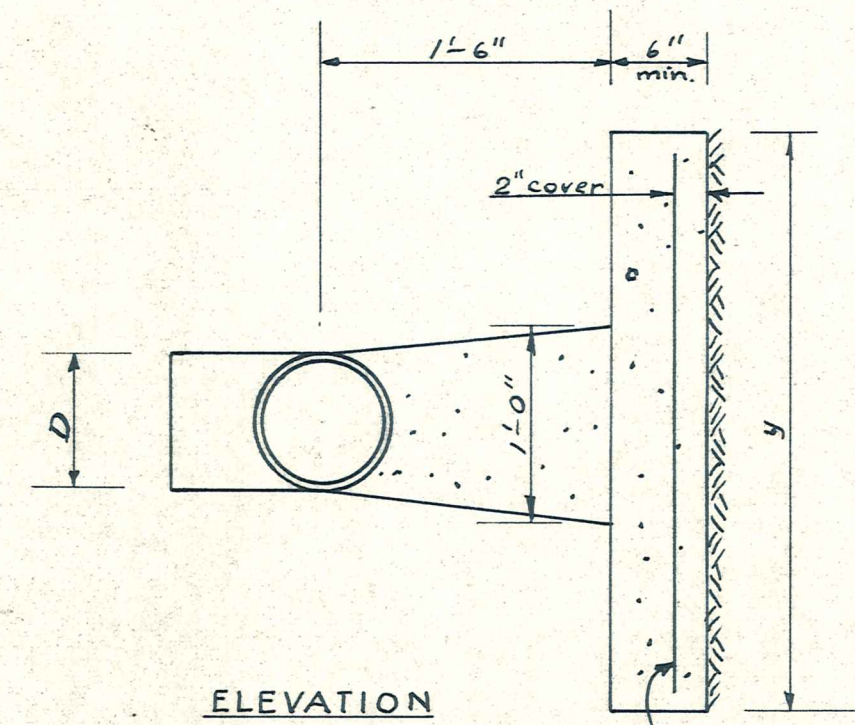
DIAGRAMATIC LAYOUT OF FITTINGS

LIST OF SPECIALS.				
Mark	Type	No. Off.	Ex. Stock	Extra Supp.
1	8" Sluice valves - flanged	3	1	2
2	6" Sluice valves - flanged	1	1	-
3	Tees 6" on 8" flanged	1	1	-
4	Crosses 6" on 8" flanged	1	-	1
5	Bends 8" 90° flanged	1	1	-
5a	8" 22 1/2° flanged to pe	1	1	-
6	Flange adaptors 8"	3	-	3
6a	6"	1	1	-
7	Tapers 8" pe to 6" fl	1	-	1
8	Blank flanges 6"	2	1	1
9	Gibault joints 8"	6	1	5
9a	6"	1	1	-



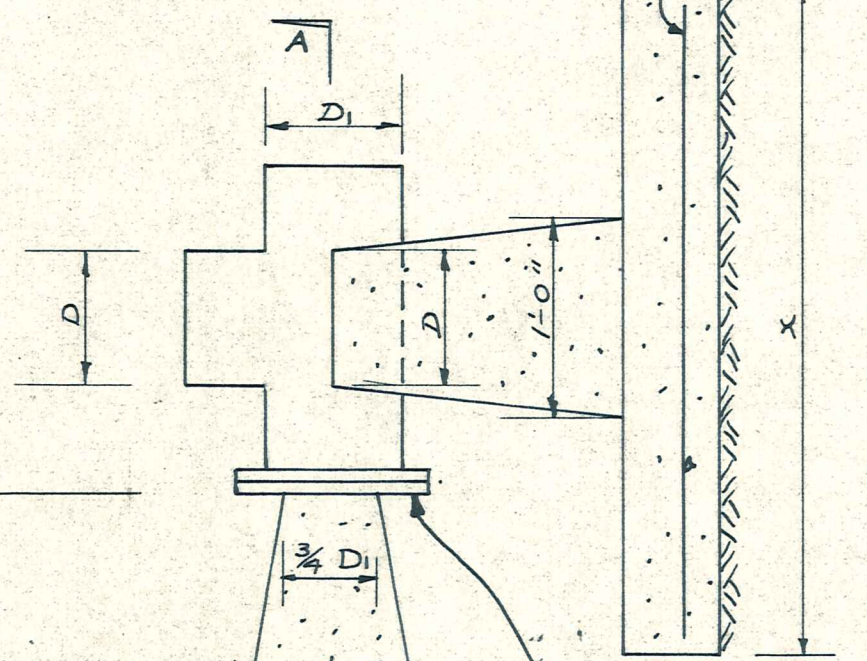
DETAIL OF ANCHOR BLOCK ALTERATION
WHEN TEE IS REPLACED WITH 90° BEND.

AMENDMENTS					NAME		DATE
No.	By	Date	Description	Apprd.	Surveyed	Drawn	
						G. J. DILLON	
						Calculations	
						Traced	W. SAILTON, MAY 1968.
						Checked	
						Approved	

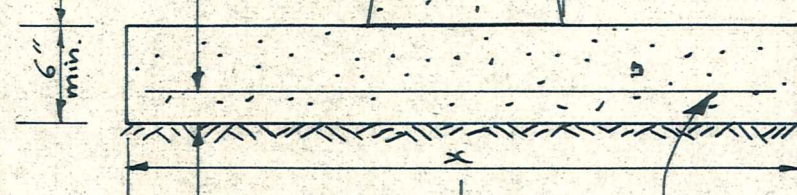


ELEVATION

1/4" dia. bars at 6" e.c. both ways



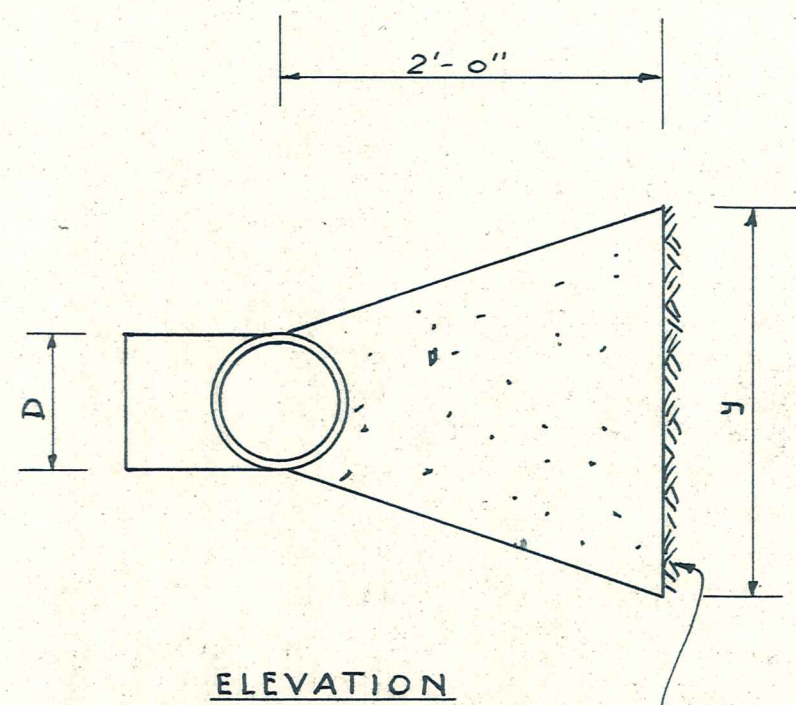
PLAN



SECTION A-A

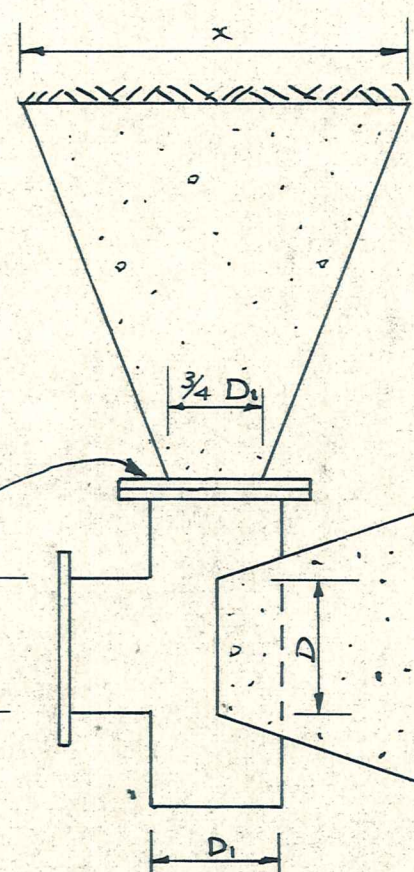
TYPE A

Suitable for high pressures for Tee's Bends & Blank Ends



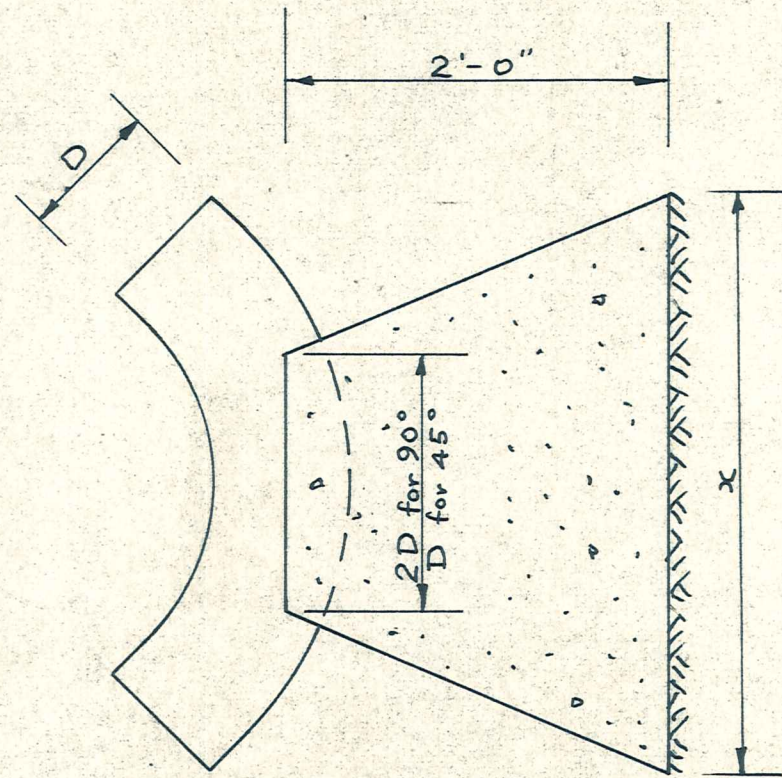
ELEVATION

1/2" phi bars at 6" e.c. both ways



PLAN

Blank Flange or Gibault Blank cap

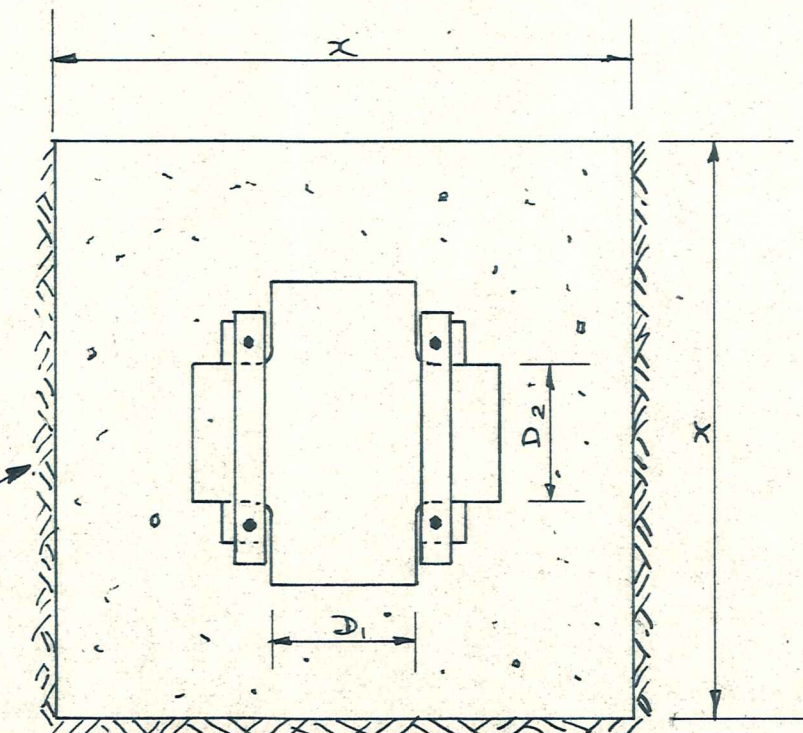


PLAN OF BEND

Elevation similar to Tee above

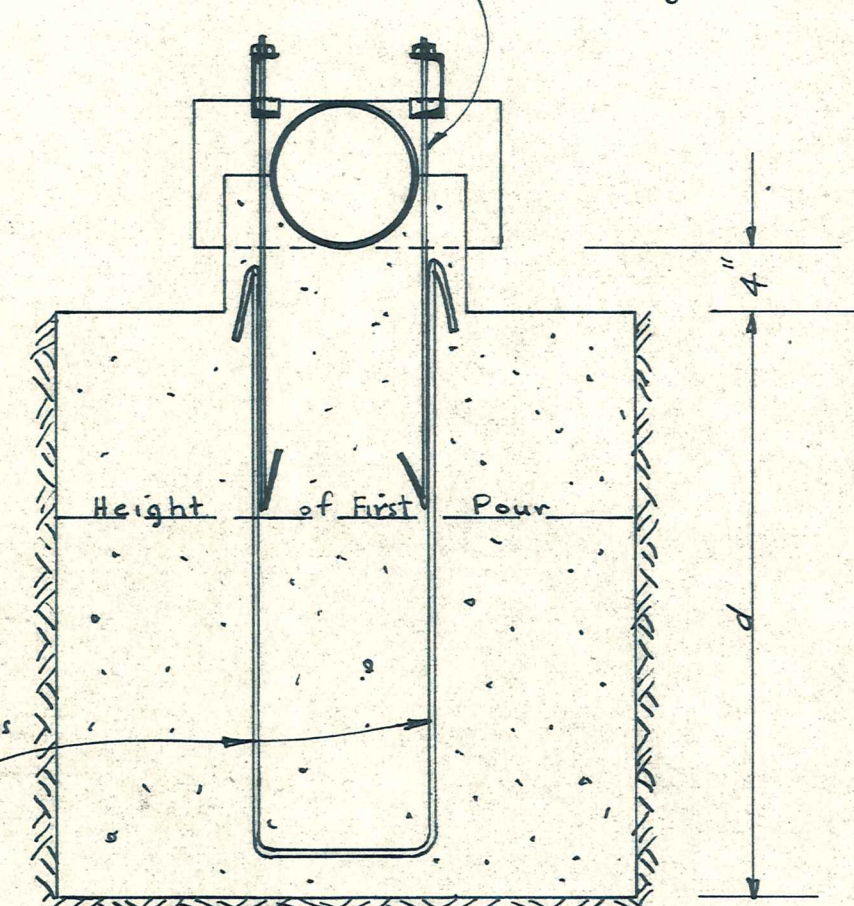
TYPE B

Smaller than type A. Suitable for medium pressures on Tee's Bends & Blank Ends



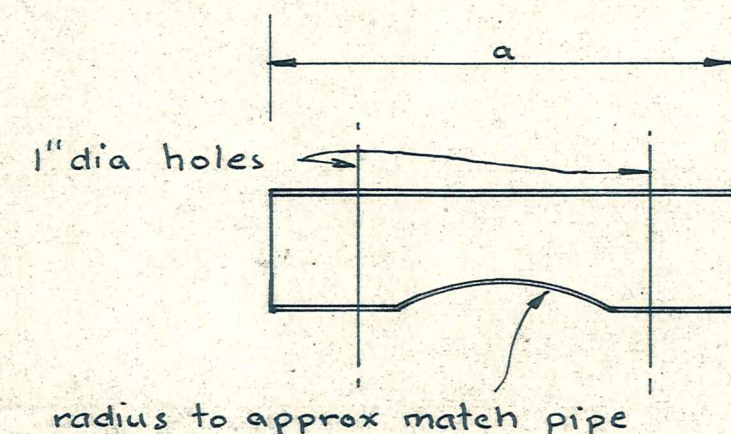
PLAN

7/8" dia galvanized bolts 2'-6" long with hooks.



ELEVATION

7/8" dia. starter bars with hooks



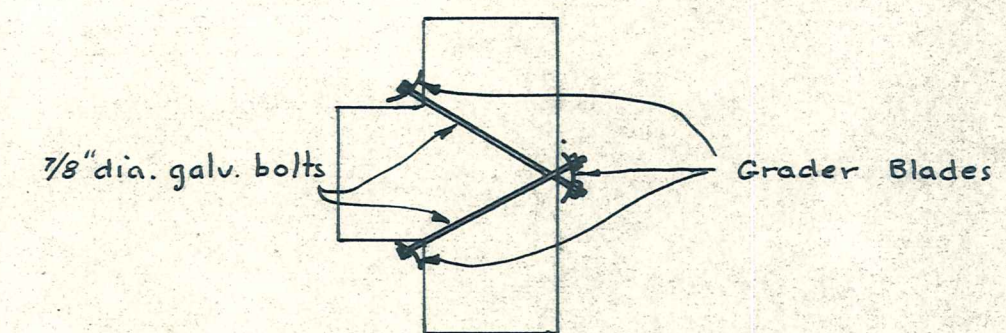
ELEVATION

4" x 2" galvanized channel.

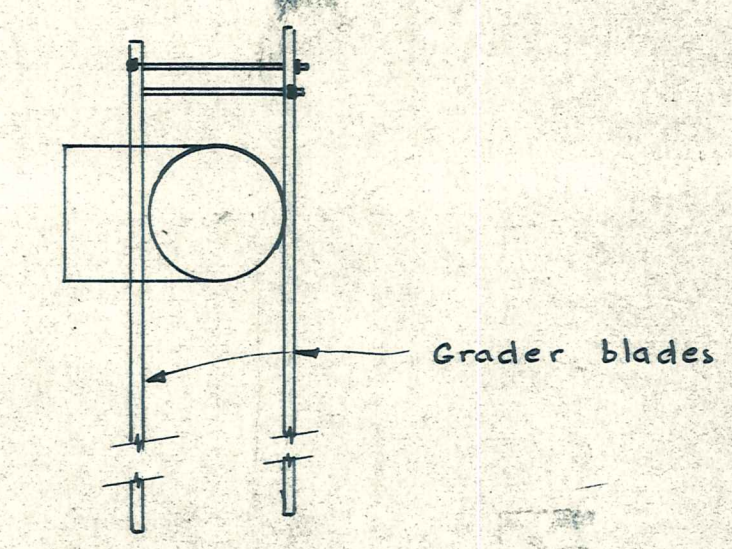
radius to approx match pipe

TYPE C

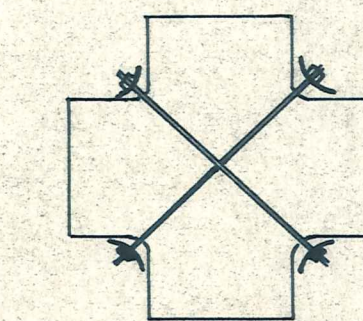
Suitable for high pressures on crosses and Tees.



PLAN OF TEE



ELEVATION



PLAN OF CROSS

TYPE D

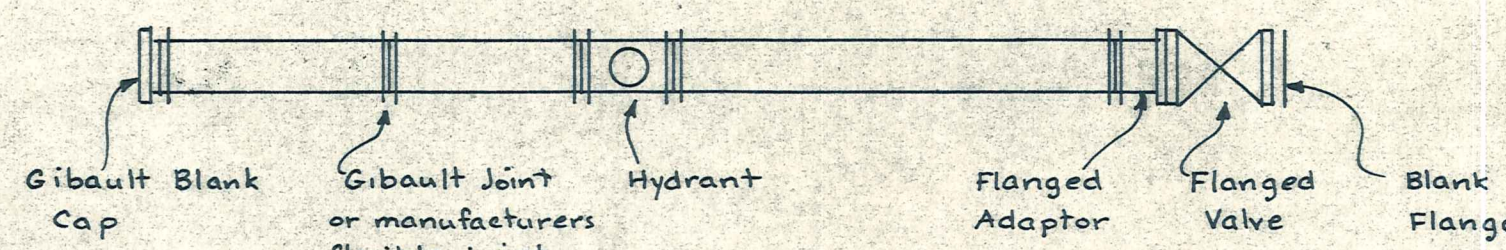
Using grader blades - suitable for low pressures only.

TABLE OF MINIMUM DIMENSIONS

Mark	Dia.	x	y	d	a
B 1	8"	3'-0"	3'-0"		
B 2	8"	2'-0"	2'-0"		

Either of types A, B or C may be used provided min. dimensions x & y are used & d = x + 6"

Grader blades may be used when x x y is less than 4 square ft. OTHER DIMENSIONS SHOWN ARE APPROXIMATE ONLY



WATER RETICULATION DETAILS

AMENDMENTS					NAME	DATE
No.	By	Date	Description	Apprd		
					Surveyed	
					Drawn	E J Dillon May 67
					Calculations	
					Traced	
					Checked	
					Approved	

DUFFILL, WATTS & KING
CONSULTING CIVIL & STRUCTURAL ENGINEERS
DUNEDIN & INVERCARGILL N.Z.

File No. _____ JOB No. _____
L Bk _____
F Bk _____
Sheet _____ of _____ Sheets