

STATE HIGHWAY No 85

Railway Boundary

IL 93.60'
GL To IL 4.00'
E 5

IL 92.10'
GL To IL 3.41'
E 4

IL 90.9
GL To IL 5.12
E 3

IL 89.70'
GL To IL 5.76'
E 2

189

972'

190

979'

204

962'

L.B.

From Wingatui

To Cromwell

This sewer to be concreted in
where depth less than standard

IL 100.8'

192

D 30
IL 95.95
GL To IL 5.09

D 30

HARVEY ST.

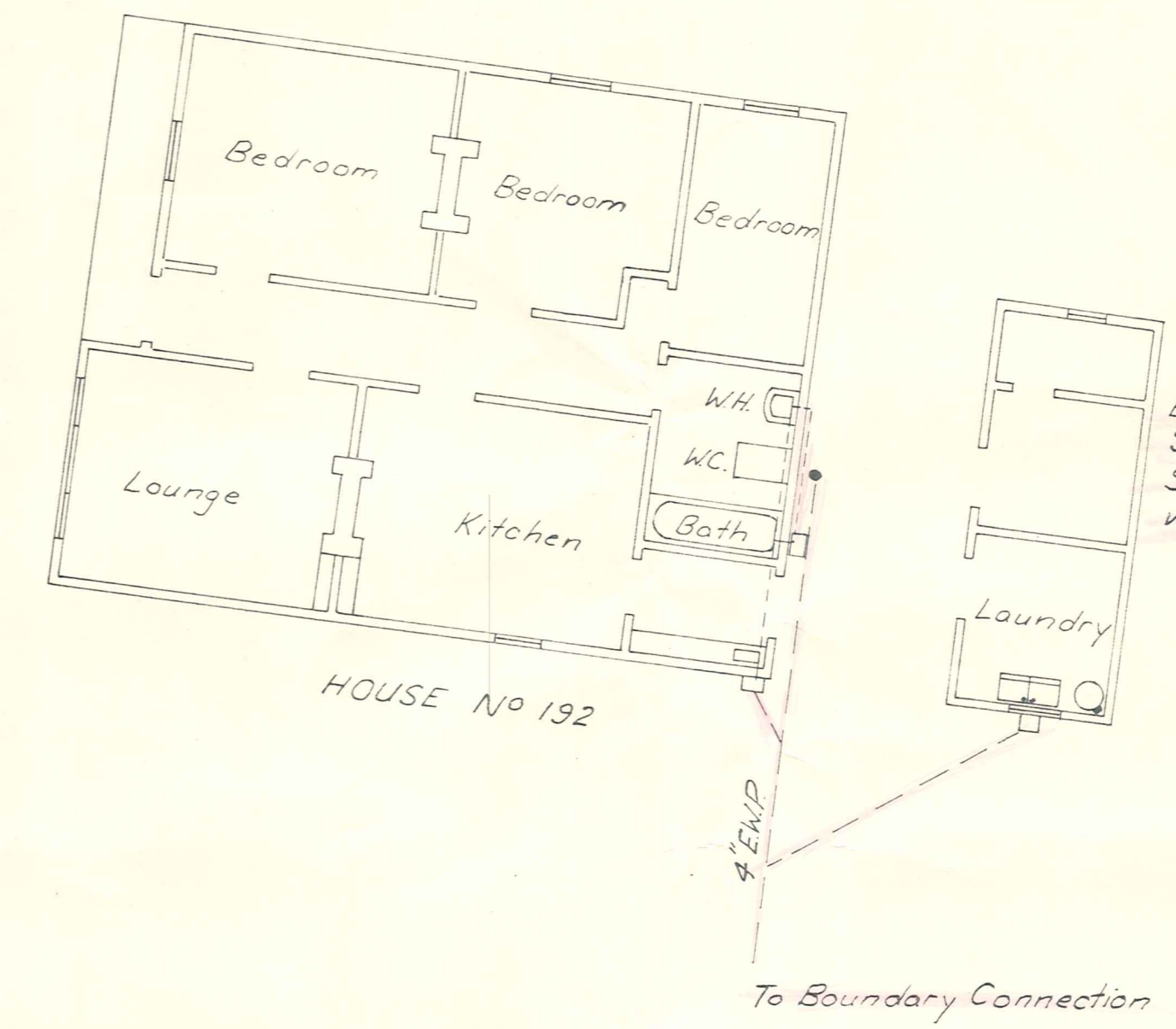
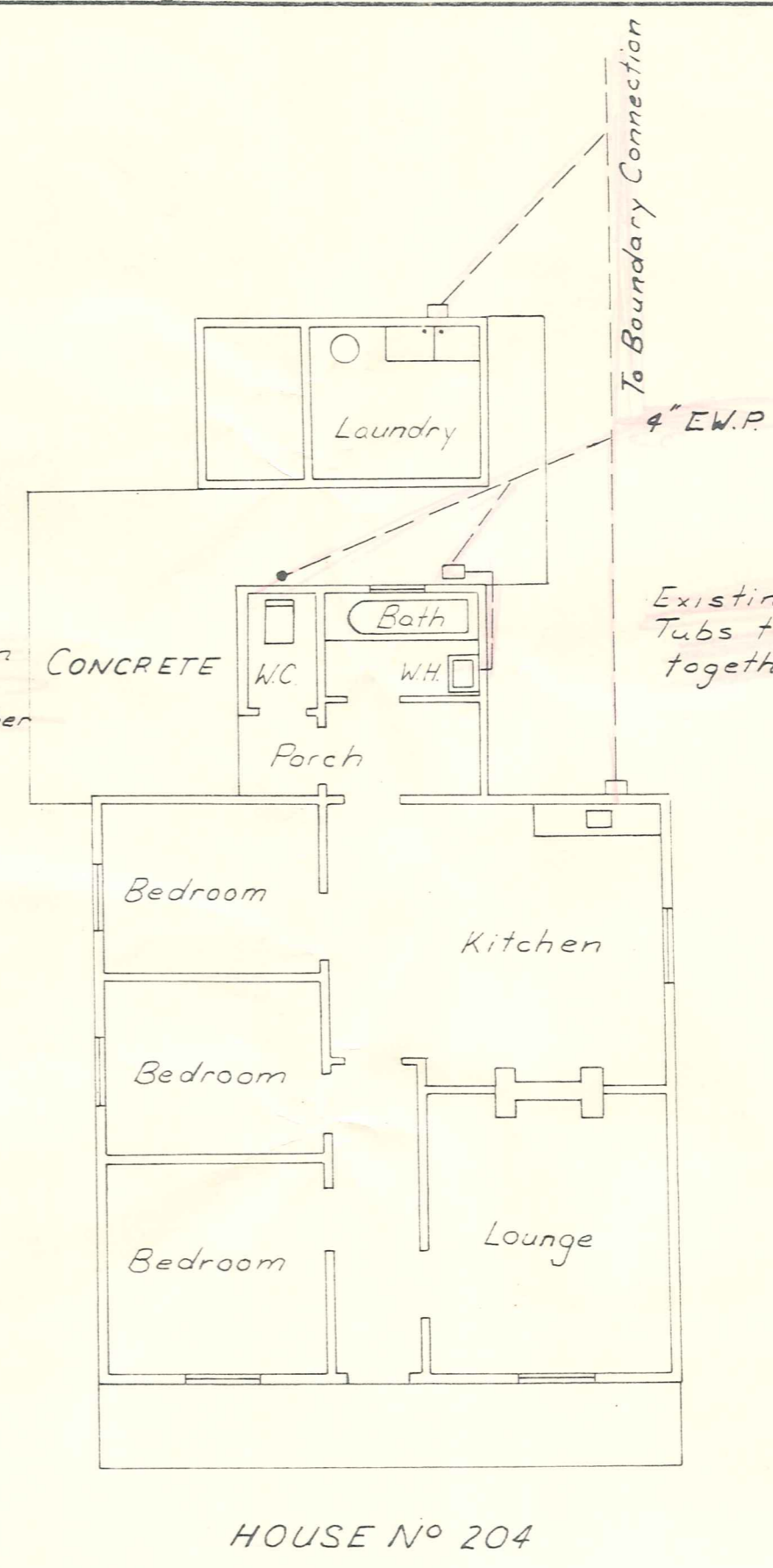
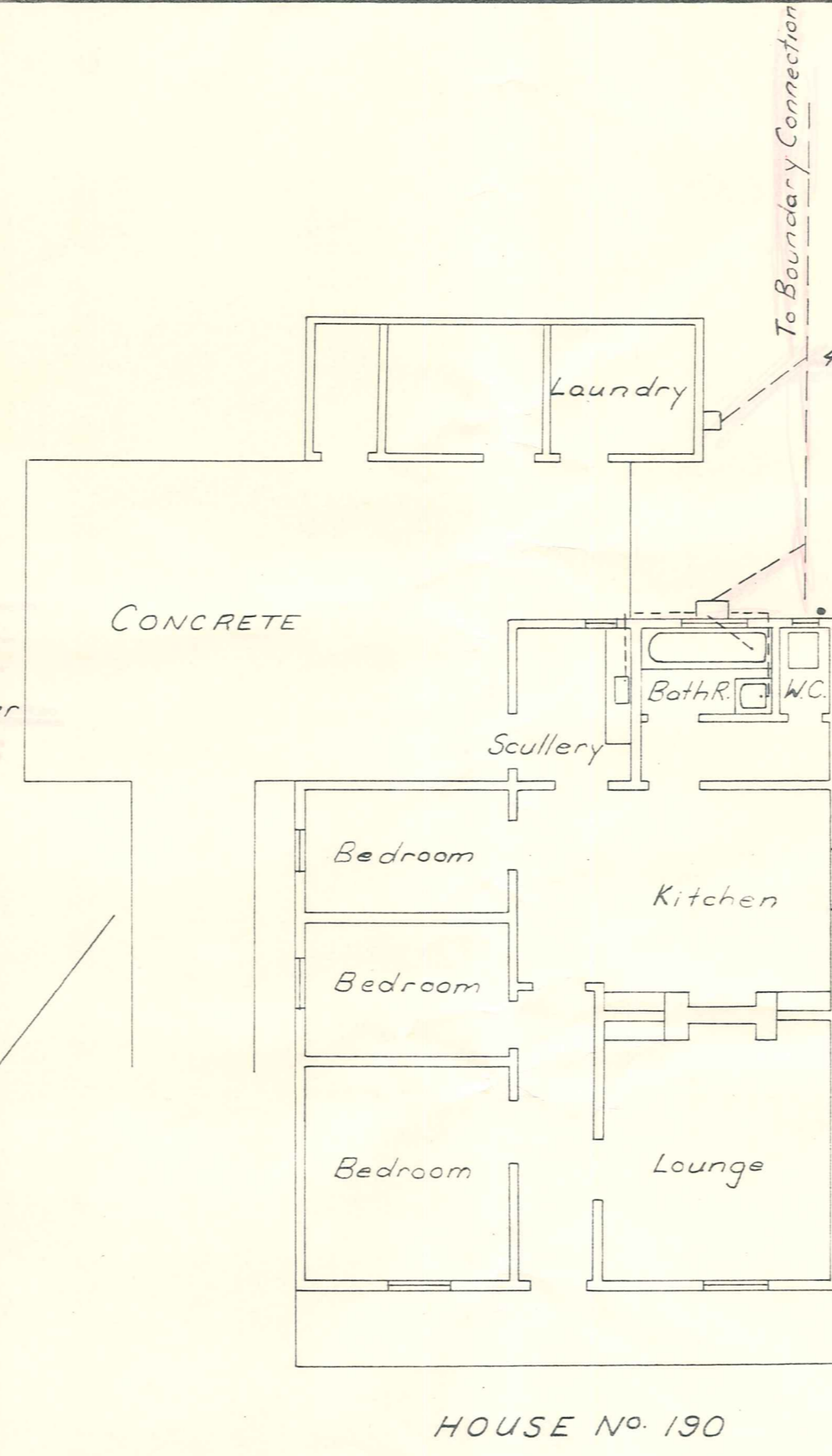
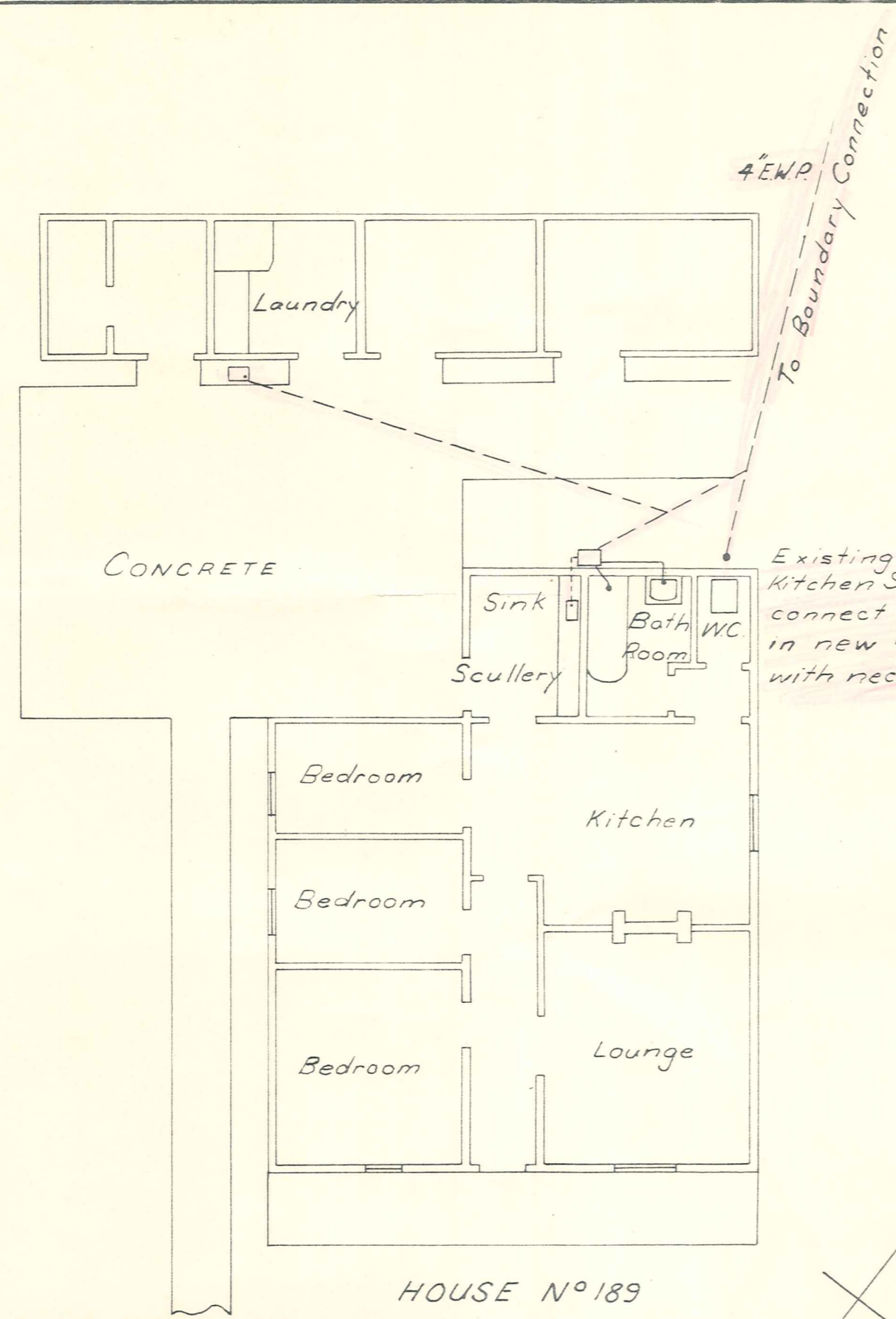
Railway Boundary

Tracing No. 2023
Sent To C. Clerk Vincent
File No. 94/11/1
Date 14-7-67.

OMAKAU PROPOSED CONNECTION OF RAILWAY HOUSES
& STATION BUILDING TO COUNTY SEWERAGE SCHEME

DISTRICT	SCALE	SHEET 1 OF 2 SHEETS
1/4" to 1"	DE No 13949	DRAWER

AMENDMENTS



Tracing No. 2023
Sent To C. Clerk Vincent
File No. 94/11/1
Date 14-7-67

OMAKAU PROPOSED SEWERAGE CONNECTIONS										
DISTRICT ENGINEER	HOUSES 189, 190, 192 & 204 and STATION BUILDINGS							D.E. No.	13949	
NZR DUNEDIN	PREP'D	R.F.S.	6/27	CHK'D	R.M.S.	7/27	SCALES	SHEET 2 OF 2 SHEETS		
	DRWN	R.F.S.	6/27	APP'VD	8ft to 1in.			DRAWER		
TRAC'D	A.A.	7/27	D.E. FILE	94/11/1	C.C.E. FILE					