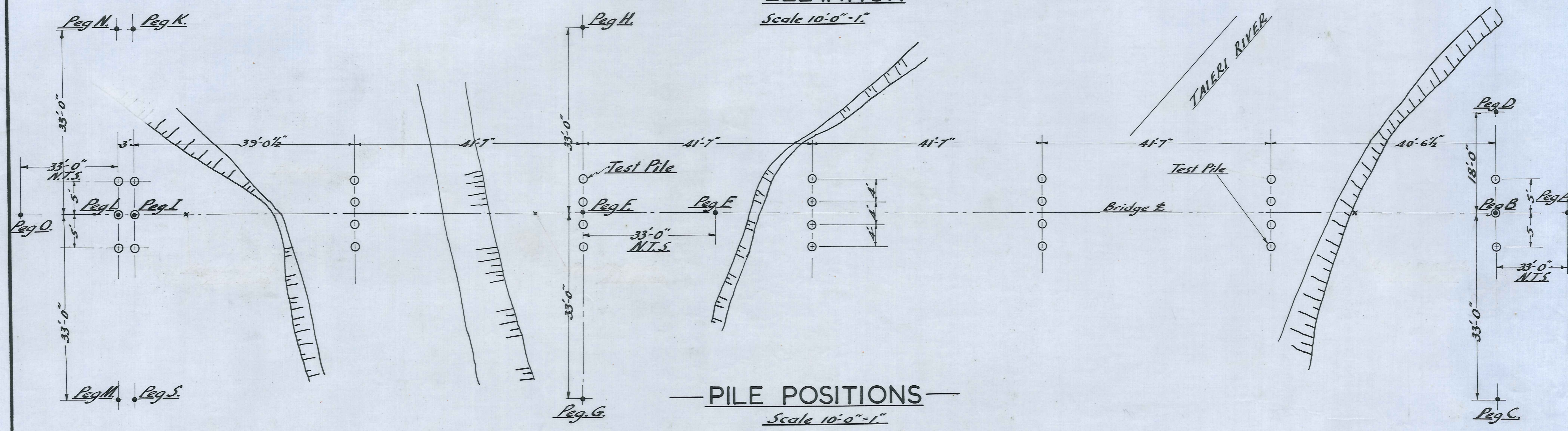
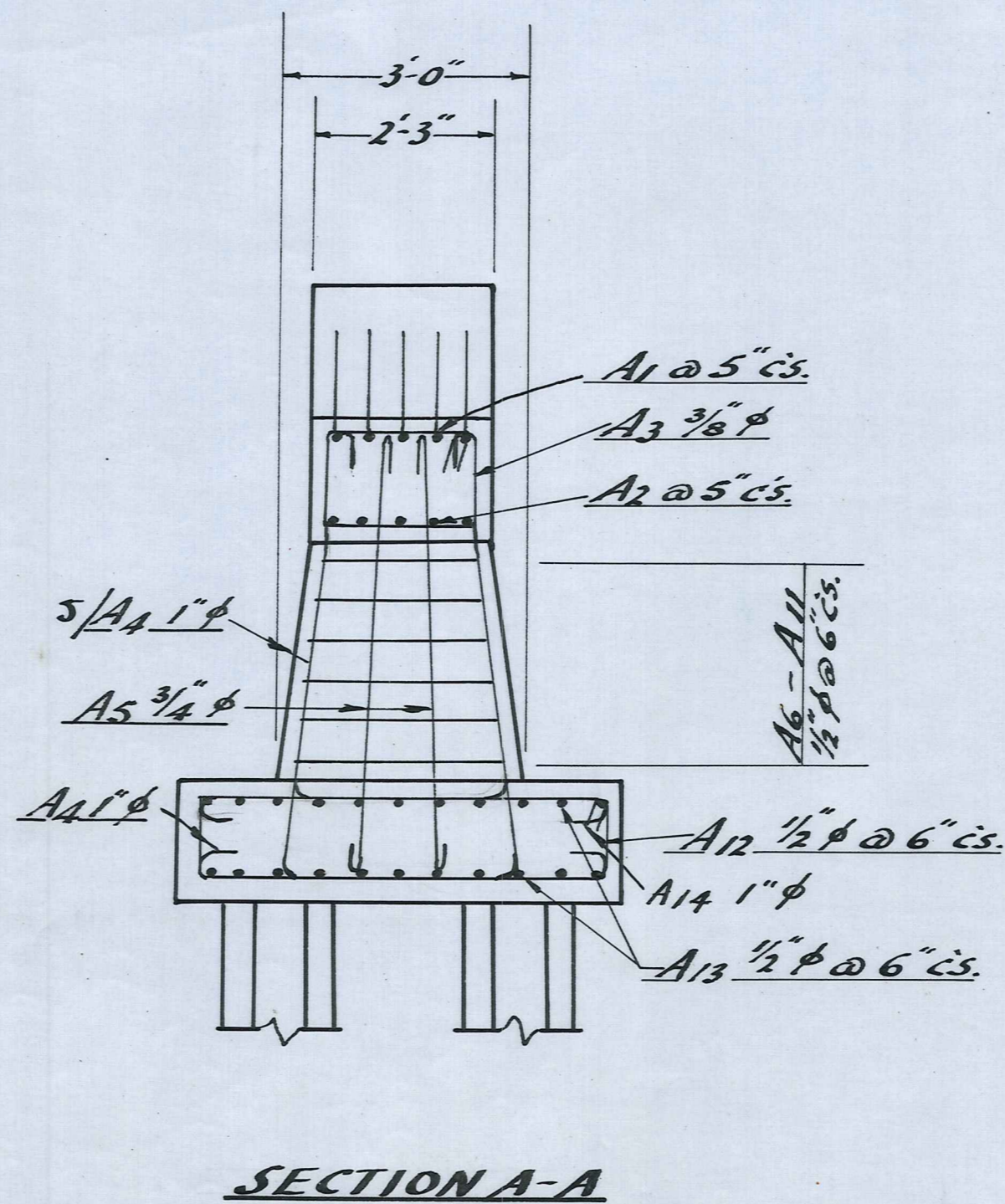
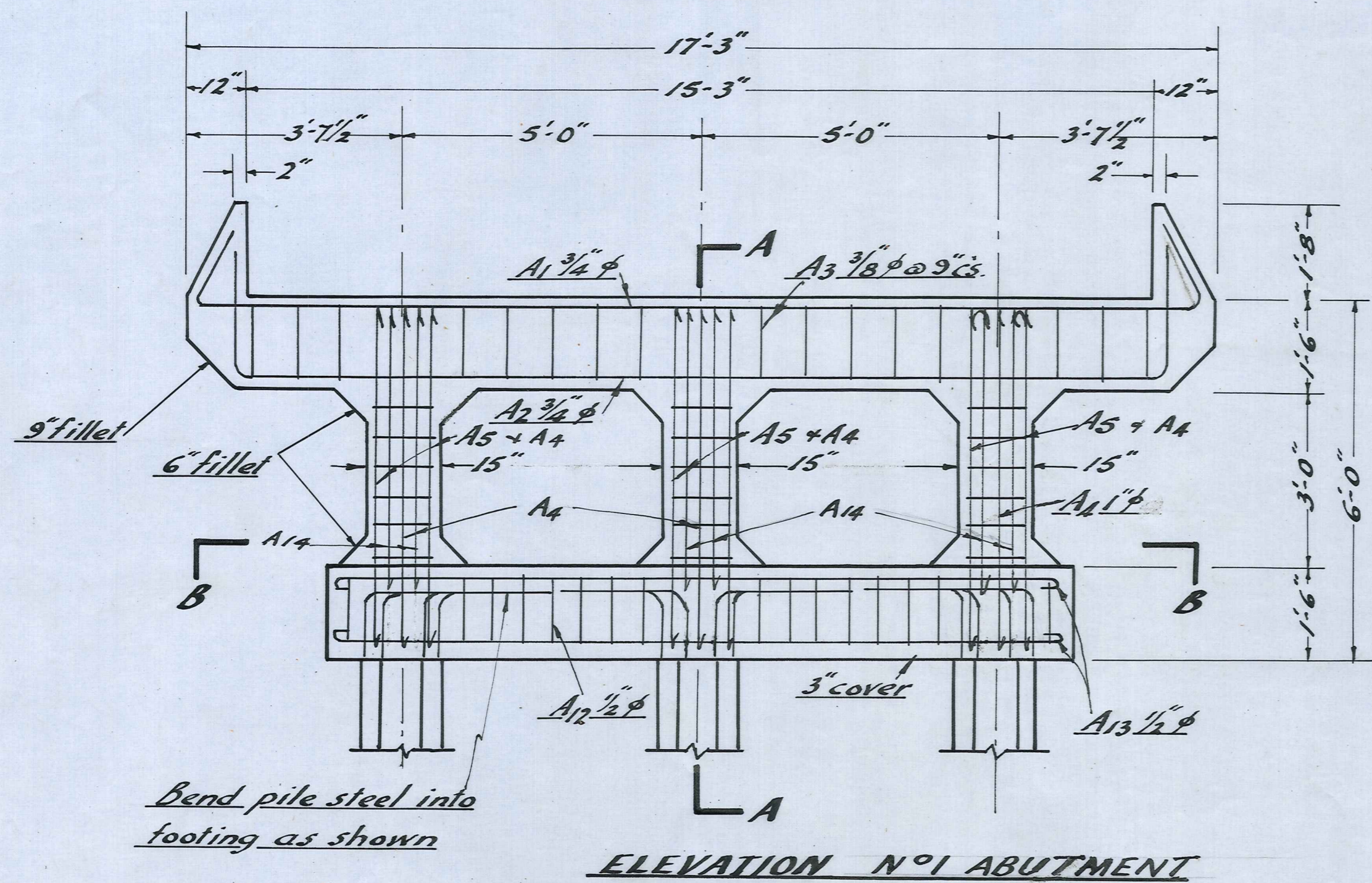
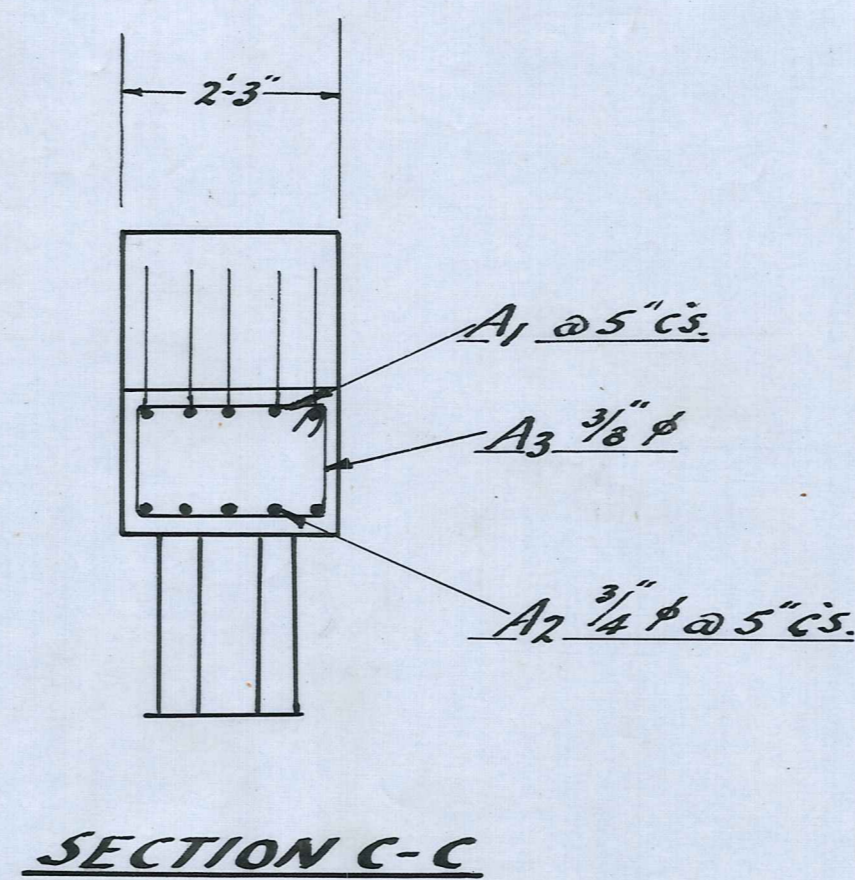
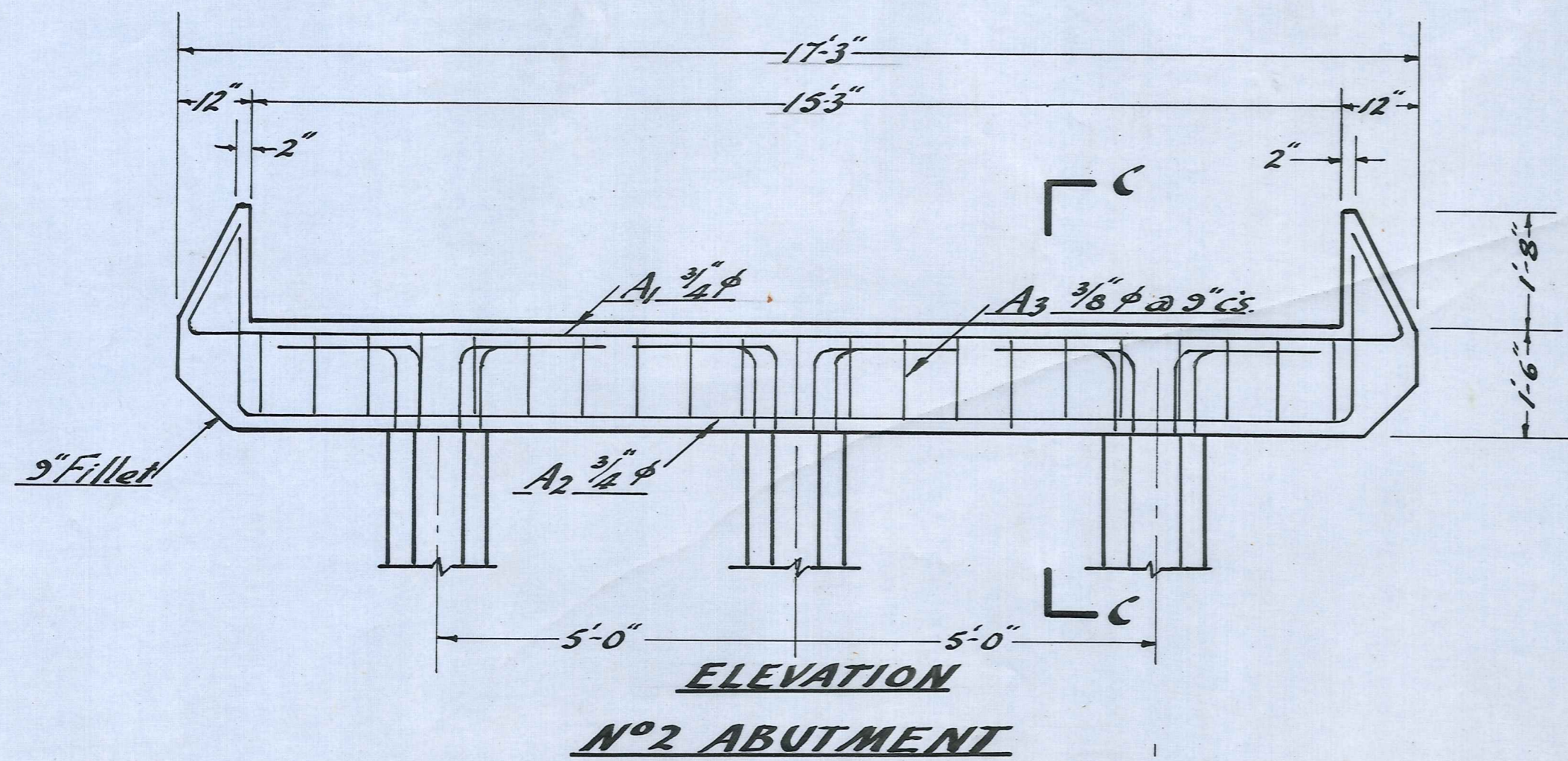


ELEVATION
Scale 10'-0"=1"

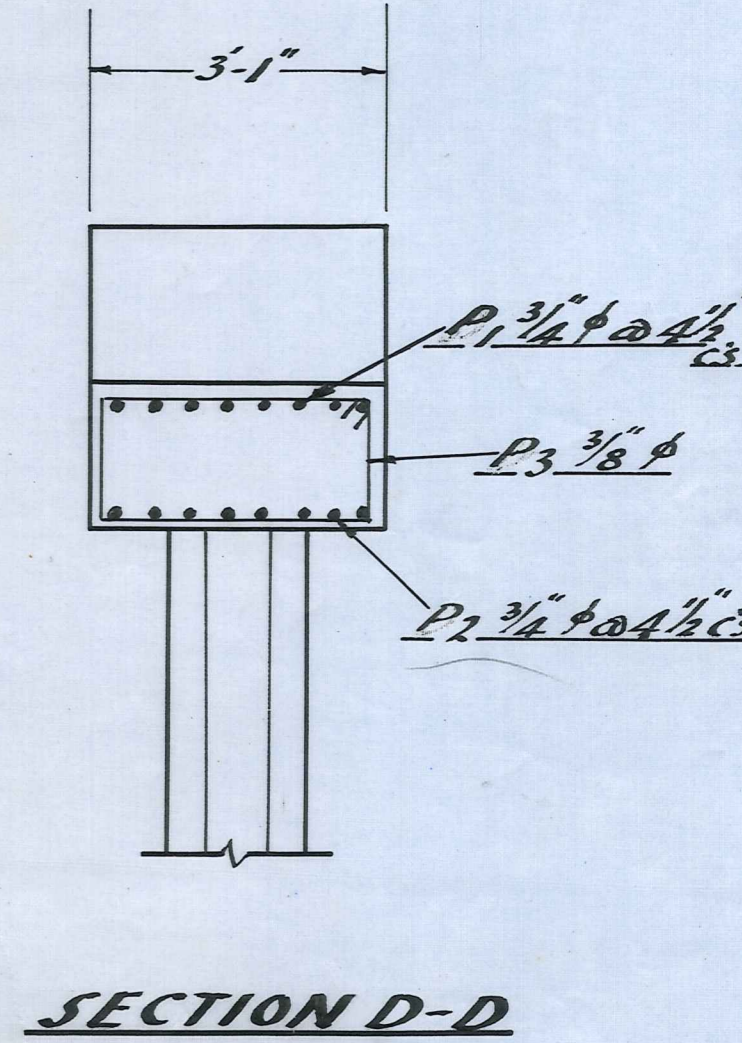
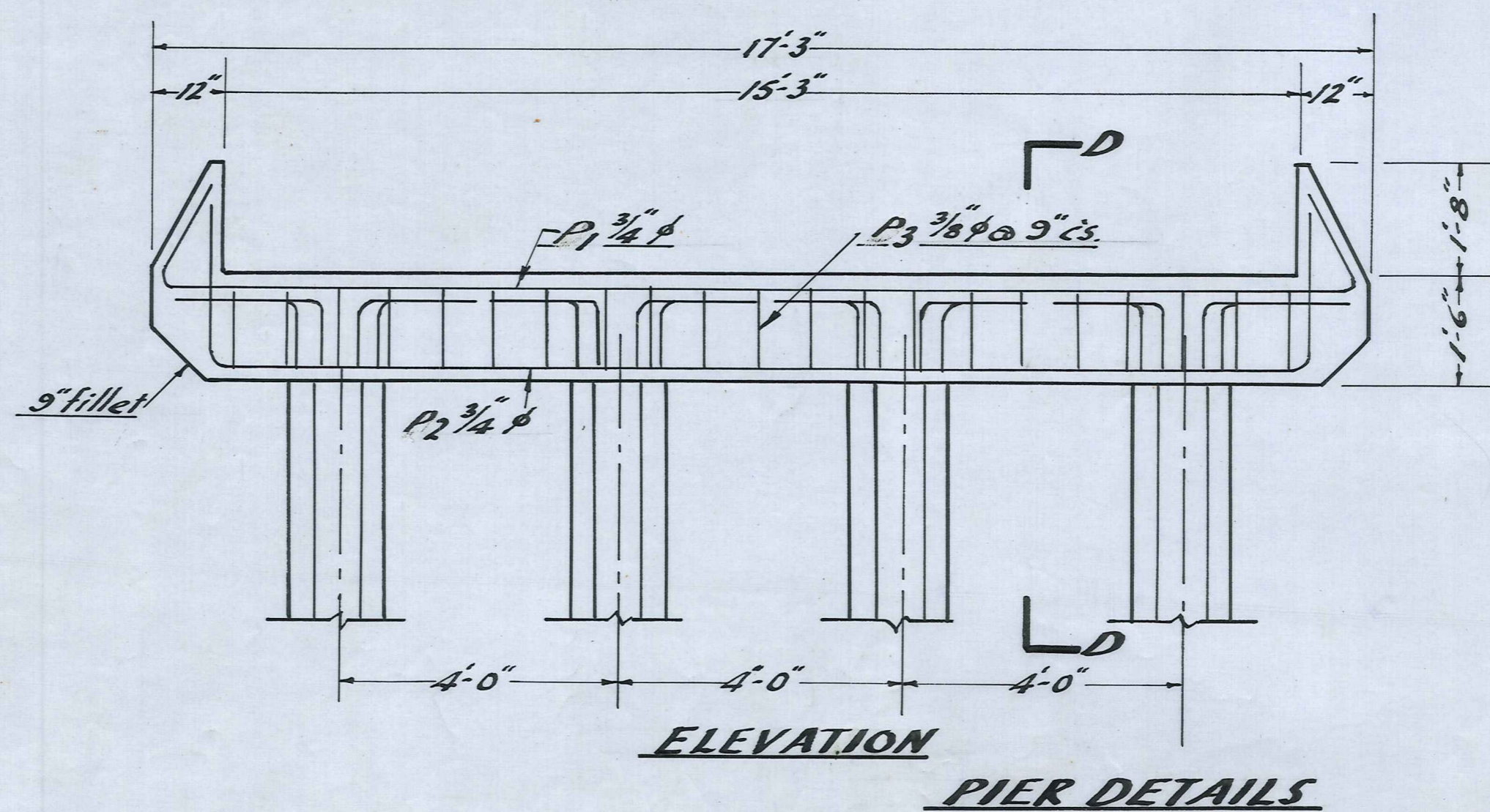
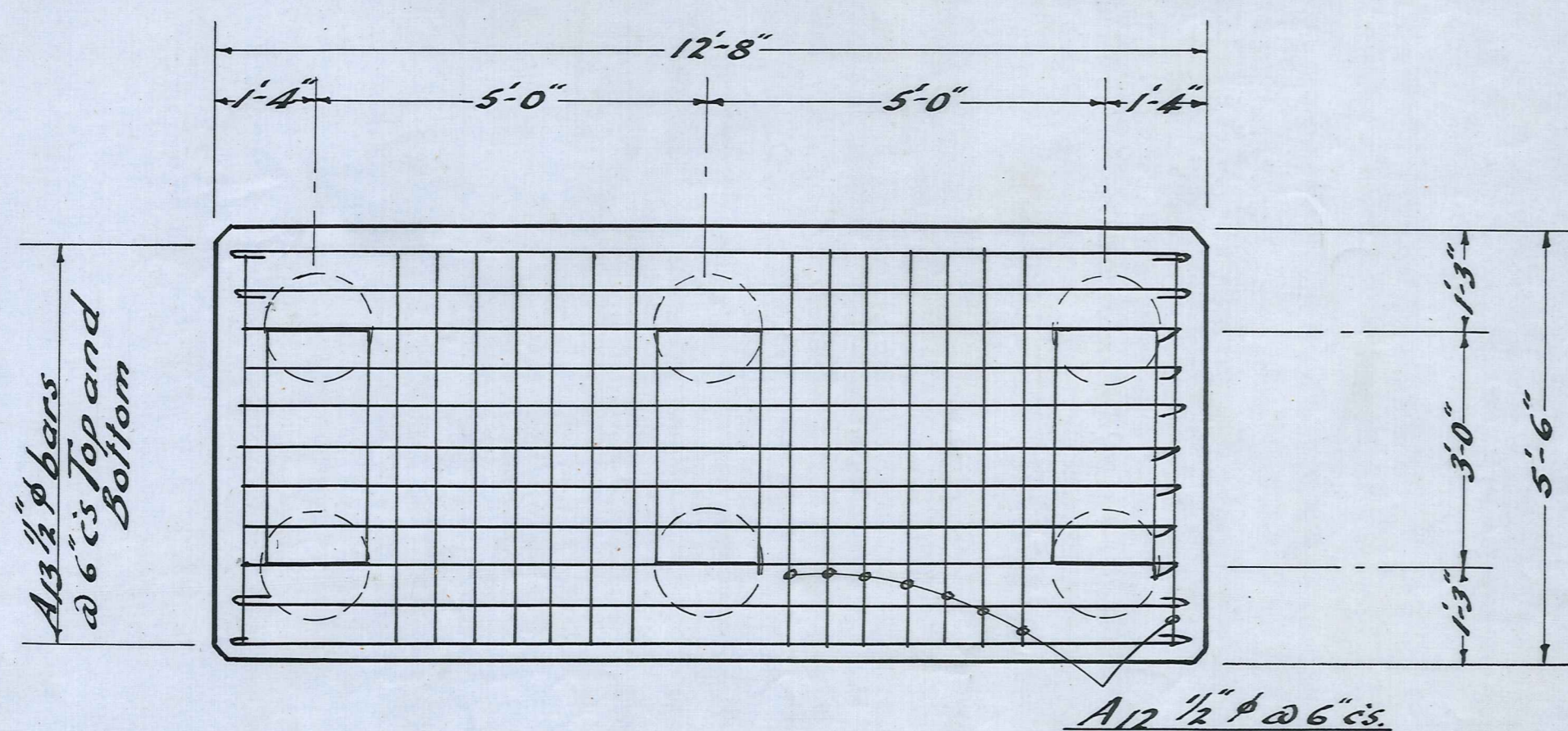


Bench Mark. Peg A. R.L. 45-32

Amended pile layout.
August 1962



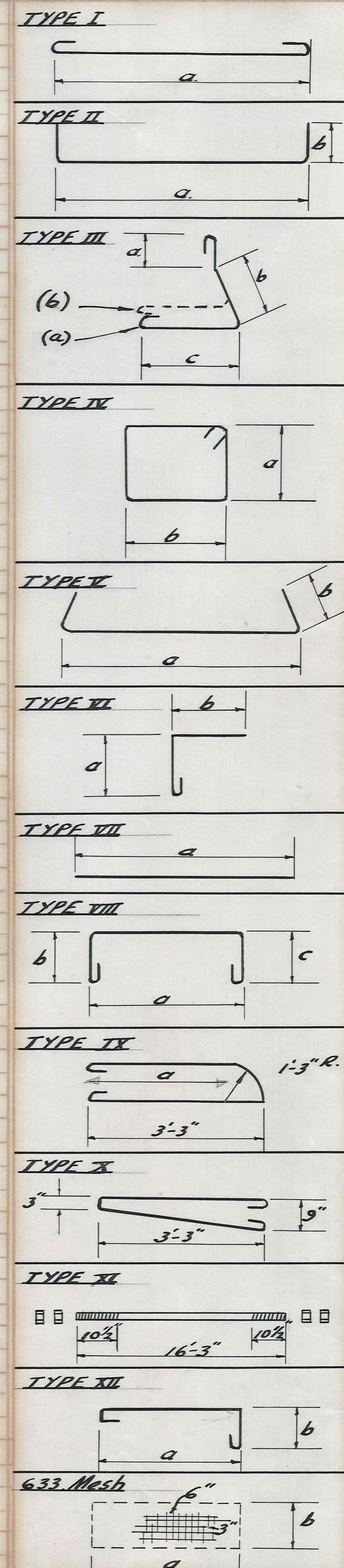
N.B. All cover to be 1 1/2" except where shown

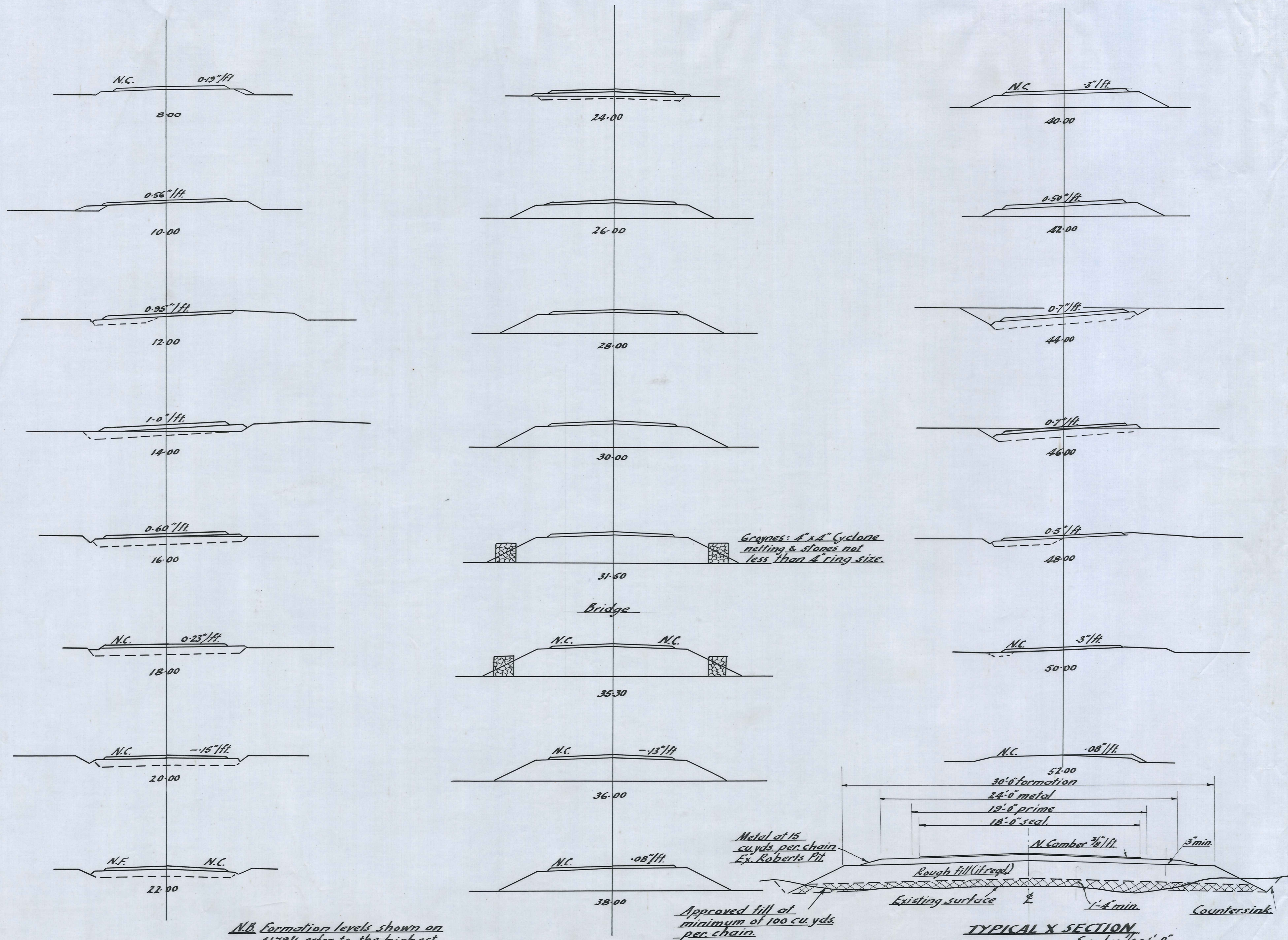


Scale: 1/2" = 1'-0"

STEEL BENDING SCHEDULE

Mark	Dia.	Type	Position	No Off	Dimensions			Cut Length	Mark	Dia.	Type	Position	No Off	Dimensions			Cut Length	Mark	Dia.	Type	Position	No Off	Dimensions			Cut Length	Shape
					a	b	c							a	b	c							a	b	c		
A1	3/4"	V		10	16'-10"	1'-8"		20'-2"	D1	3/4"	XI	Deck	96	16'-3"			16'-3"								TYPE I		
A2	3/4"	II		10	15'-7"	2'-6"		20'-7"	D2	1/2"	VII		1620	1'-1" (Exactly)			1'-1"								TYPE II		
A3	3/8"	IV		37	1'-3"	1'-11"		6'-10"	D3	633	Mech.		48	14'-6"	5'-6"										TYPE III		
A4	1"	III(6)		18	1'-4"	4'-3"	3'-11"	11'-0"	D4	3/8"	XII		216	2'-0"	12"		3'-11 1/2"								TYPE IV		
A5	3/4"	I		12	5'-6"			6'-7 1/2"	D5	1/2"	I		48	14'-9"			15'-6"								TYPE V		
A6	1/2"	IV		3	1'-11"	12"		6'-4"	D6	1"	VIII		60	1'-6 3/4"	2'-9"	2'-9"	8'-6 3/4"								TYPE VI		
A7	1/2"			3	2'-0 1/2"	12"		6'-7"	D7	1/2"	VI		420	1'-5"	12"		2'-9 1/2"								TYPE VII		
A8	1/2"			3	2'-3"	12"		6'-10"	D8	1/2"	I		72	22'-0"			22'-9"								TYPE VIII		
A9	1/2"			3	2'-4 1/2"	12"		7'-1"																TYPE IX			
A10	1/2"			3	2'-6"	12"		7'-4"																TYPE X			
A11	1/2"			3	2'-7 1/2"	12"		7'-7"																TYPE XI			
A12	1/2"			16	5'-2"	1'-1 1/2"		13'-1"																TYPE XII			
A13	1/2"	I		22	12'-5"			13'-2"	K1	5/8"	VII	Kerb	144	22'-0"			22'-0"								TYPE XIII		
A14	1"	III(6)		12	1'-4"	3'-3"	3'-9"	9'-10"	K2	1/2"	IV		924	3"	1'-3"		3'-6 1/4"								TYPE XIV		
									K3	3/8"	IX		12	As Shown			8'-2"								TYPE XV		
									K4	3/4"	VIII		200	1'-3"	2'-2"	1'-3"	5'-9 1/2"								TYPE XVI		
P1	3/4"	V		40	16'-10"	1'-8"		20'-2"	H1	5/8"	X	Hand Rails	16	As shown			7'-8 1/2"								TYPE XVII		
P2	3/4"	II		40	15'-7"	2'-6"		20'-7"	H2	1/2"	X		184	As shown			7'-6"								TYPE XVIII		
P3	3/8"	IV		106	2'-9"	1'-3"		8'-6"	H3	6ga	IV		4	1'-7"	4 1/4"		4'-4 1/2"								TYPE XIX		
									H4	"	"		4	1'-7"	5 1/4"		4'-6 1/2"								TYPE XX		
									H5	"	"		4	1'-7"	6 1/2"		4'-9"								TYPE XXI		
									H6	"	"		4	1'-7"	7 1/2"		4'-11"								TYPE XXII		
									H7	"	"		32	3"	4 1/4"		1'-5 1/2"								TYPE XXIII		
									H8	"	"		32	3"	5 1/4"		1'-7 1/2"								TYPE XXIV		
									H9	"	"		32	3"	6 1/2"		1'-10"								TYPE XXV		
									H10	"	"		32	3"	7 1/2"		2'-0"								TYPE XXVI		





N.B. Formation levels shown on 4179/1 refer to the highest point on the sealed road surface.

Approved fill at minimum of 100 cu. yds. per chain.

Metal at 15 cu. yds. per chain Ex. Roberts Pit

Groynes: 4" x 4" Cyclone netting & stones not less than 4 ring size.

TYPICAL X SECTION
Scale: 1/4"=1'-0"