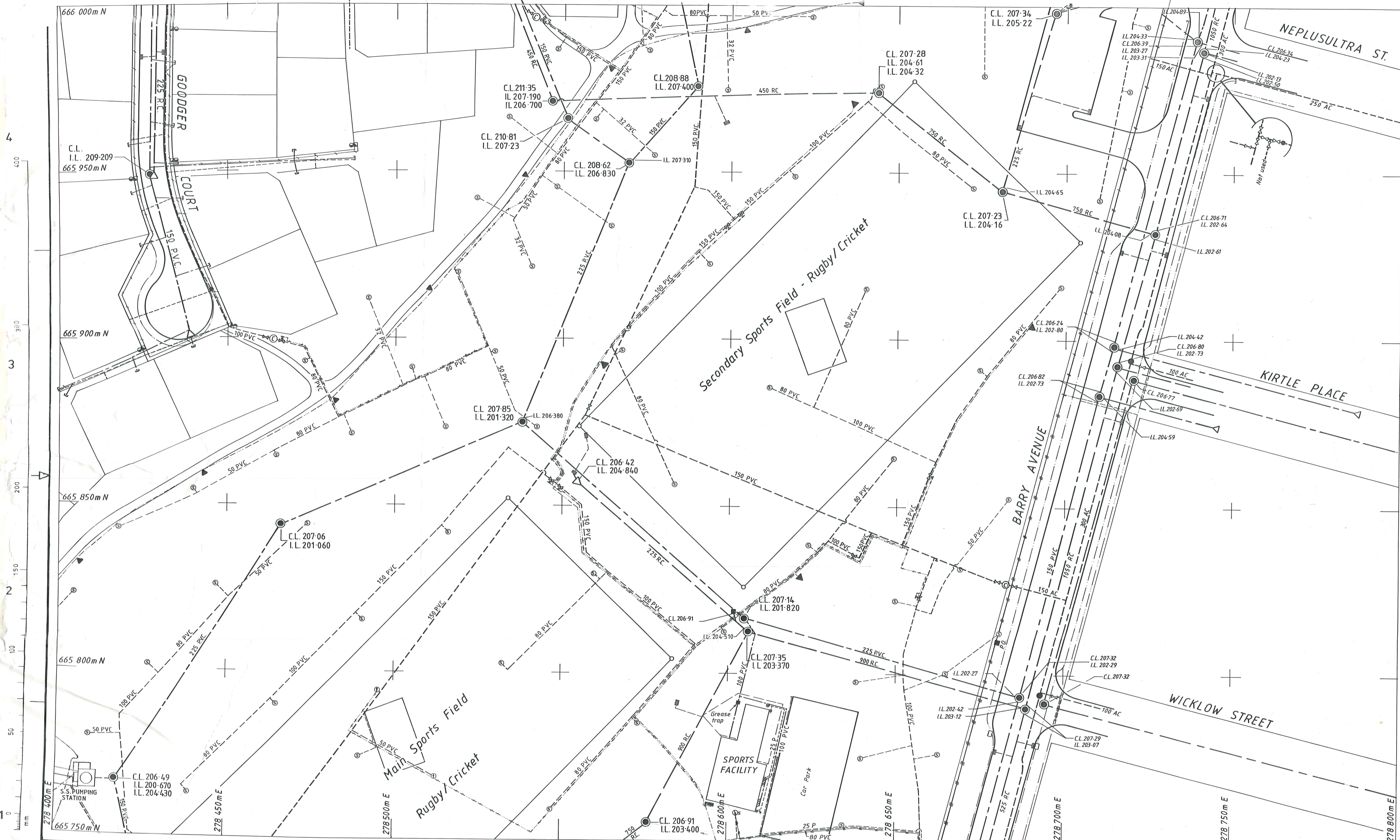


AS Built - Anderson Park, Goodger Court, Neplusultra St, Kirtle Place, Wicklow Street



ORIGINAL SIZE A 1	GRID REF 15/4/20/3/3	BY drawn	CHECKED G.B./a	DATE 9.9.85	RECOMMENDED	Ministry of Works and Development POWER M. J. WILLIAMS CHIEF POWER ENGINEER J. J. CHESTERMAN Commissioner	CLUTHA VALLEY DEVELOPMENT CROMWELL EXPANSION AREA 20-3: "AS BUILT" SERVICES		ORIGINAL SCALES 1:500	FILE
	AMENDMENTS	BY	APPD.	DATE	APPROVED E. Hughes, Project Engineer		JOB	CODE	SHEET	REVISION
LOCAL OR TRACING No.	1:1		1:2		1:500		Whole numbers = mm Decimatised expressions = m unless indicated otherwise			

15/4/20/3/3

P.W. 482-A1
Rev. Aug. 1981

metric design