

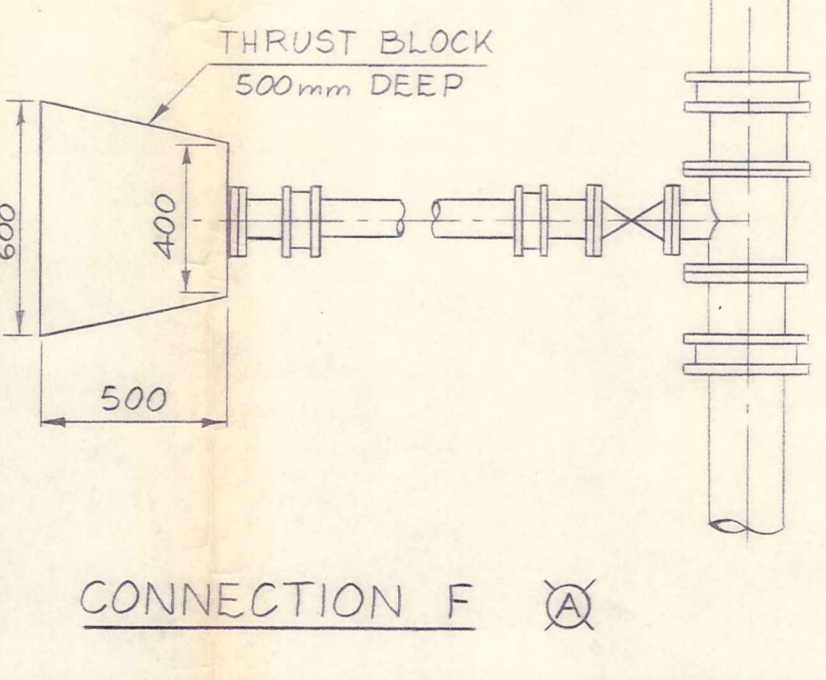
ROAD C1 TYPICAL CROSS-SECTION

ROADS A1 & F2 TYPICAL CROSS-SECTION

ROAD F1 TYPICAL CROSS-SECTION

- NOTES** SCALE 1:100
- PIPES TO BE CLASS 'C' ASBESTOS CEMENT PRESSURE PIPE.
 - THRUST BLOCKS ARE TO BE 1m DEEP UNLESS OTHERWISE SHOWN.
 - MINIMUM PIPE COVER TO BE 1m OVER ALL PIPEWORK.
 - THESE FITTINGS TO BE INSTALLED BY OTHERS.
BLANK FLANGES AND TEMPORARY THRUST BLOCKS TO BE REMOVED.
 - PIPES TO BE DEFLECTED AT EACH JOINT TO MAINTAIN POSITION RELATIVE TO CENTRE LINE.
 - LEVELS ARE IN TERMS OF MEAN SEA LEVEL DUNEDIN.
 - 100 mm DIA. CONNECTIONS TO BE TAKEN TO ROAD BOUNDARY. (A)

SYMBOL	DESCRIPTION
	THRUST BLOCK
	GIBAULT JOINT
	FLANGED ADAPTOR - PLAIN
	BEND - FLANGED 22.5°
	SLUICE VALVE - DOUBLE FLANGED
	EQUAL TEE - 3 ENDS FLANGED
	UNEQUAL TEE - 3 ENDS FLANGED
	HYDRANT TEE - FLANGED WITH HYDRANT
	REDUCER - 2 ENDS FLANGED
	BLANK FLANGE



DRAWN		BY	CHECKED	DATE	RECOMMENDED	Ministry of Works and Development	CLUTHA VALLEY DEVELOPMENT	ORIGINAL SCALES 1:2000, 1:100, 1:20		FILE
SUPERVISED					POWER			J.J. CHESTERMAN	JOB	CODE
AMENDMENTS		BY	APPD.	DATE	APPROVED FOR ISSUE	CHIEF POWER ENGINEER	8/1290/81	7834	3	B
					PER	N.C. McLEOD				
					PROJECT ENGINEER	Commissioner				