

- NOTES:
- (i) Benchmark 1st bolt on R.H.S. of Bridge Runner E.L. 100.00.
 - (ii) Buildings.
 - (iii) Water level at Bridge at time of survey E.L. 90.74.
 - (iv) Deck level E.L. 99.27.
 - (v) \odot Power or Telegraph Pole.

Scale: 40 feet = 1 inch.

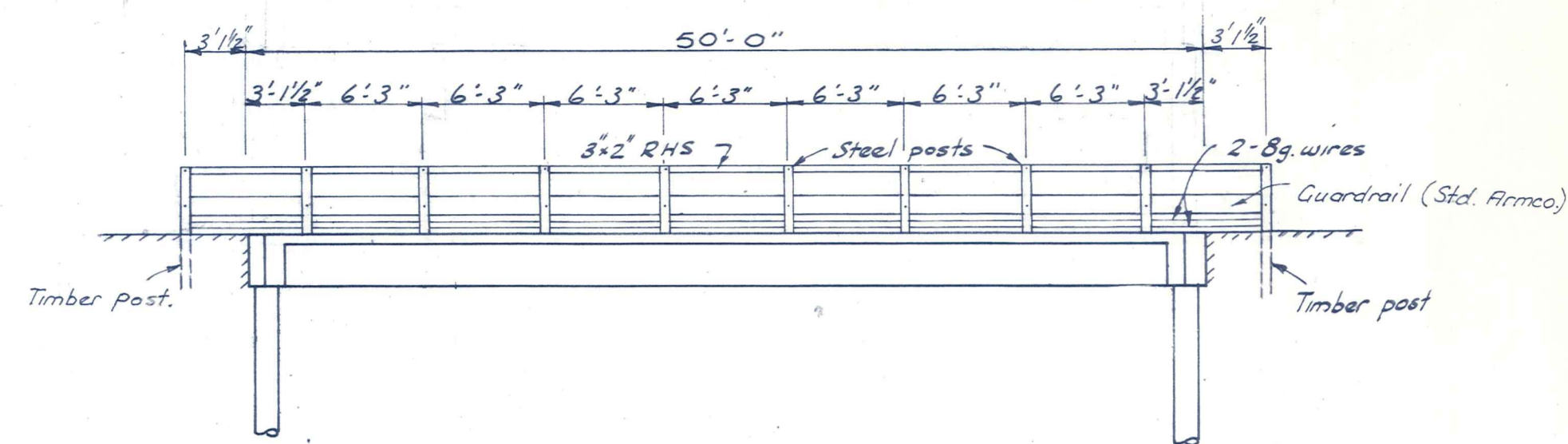
MANIOTOTO COUNTY COUNCIL

EWEBURN BRIDGE — BARNEY'S LANE.

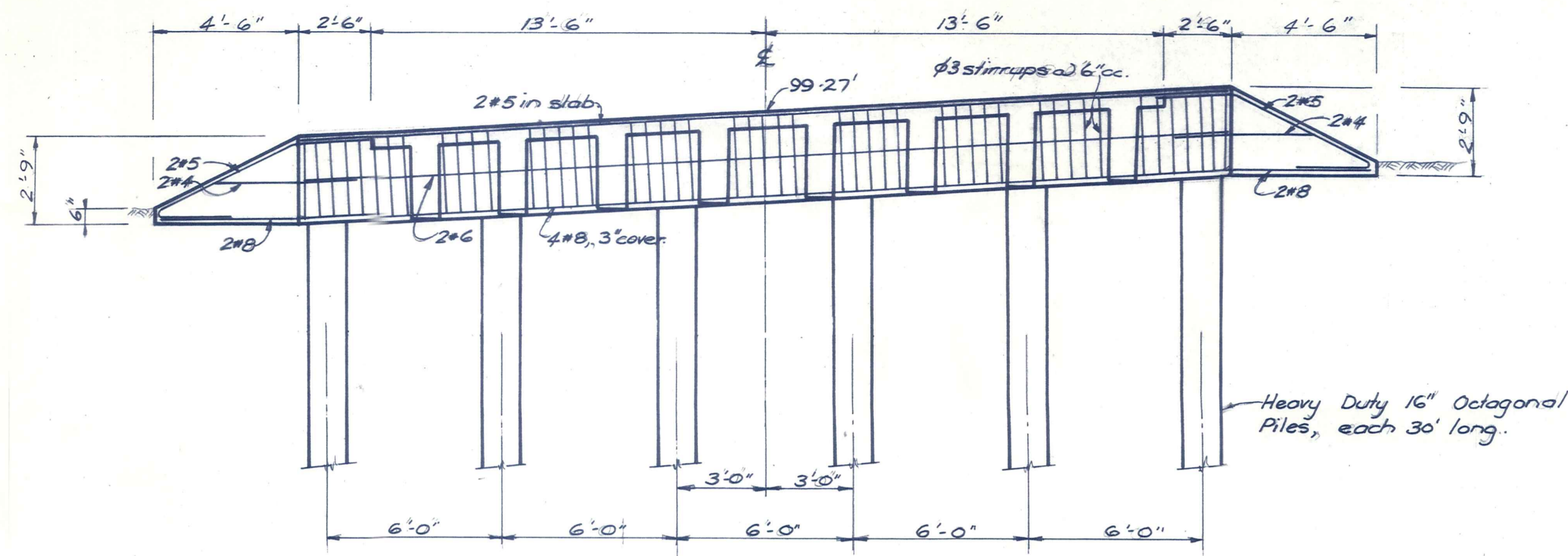
AMENDMENTS					NAME		DATE	
No.	By	Date	Description	Apprd.				
					Surveyed	D. W. Back.	4.1.68	
					Drawn		15.1.68	
					Calculations		12.1.68	
					Traced	W. Bailton.	16.1.68	
					Checked			
					Approved		Feb 68	

DUFFILL, WATTS & KING
CONSULTING CIVIL & STRUCTURAL ENGINEERS
DUNEDIN & INVERCARGILL N.Z.

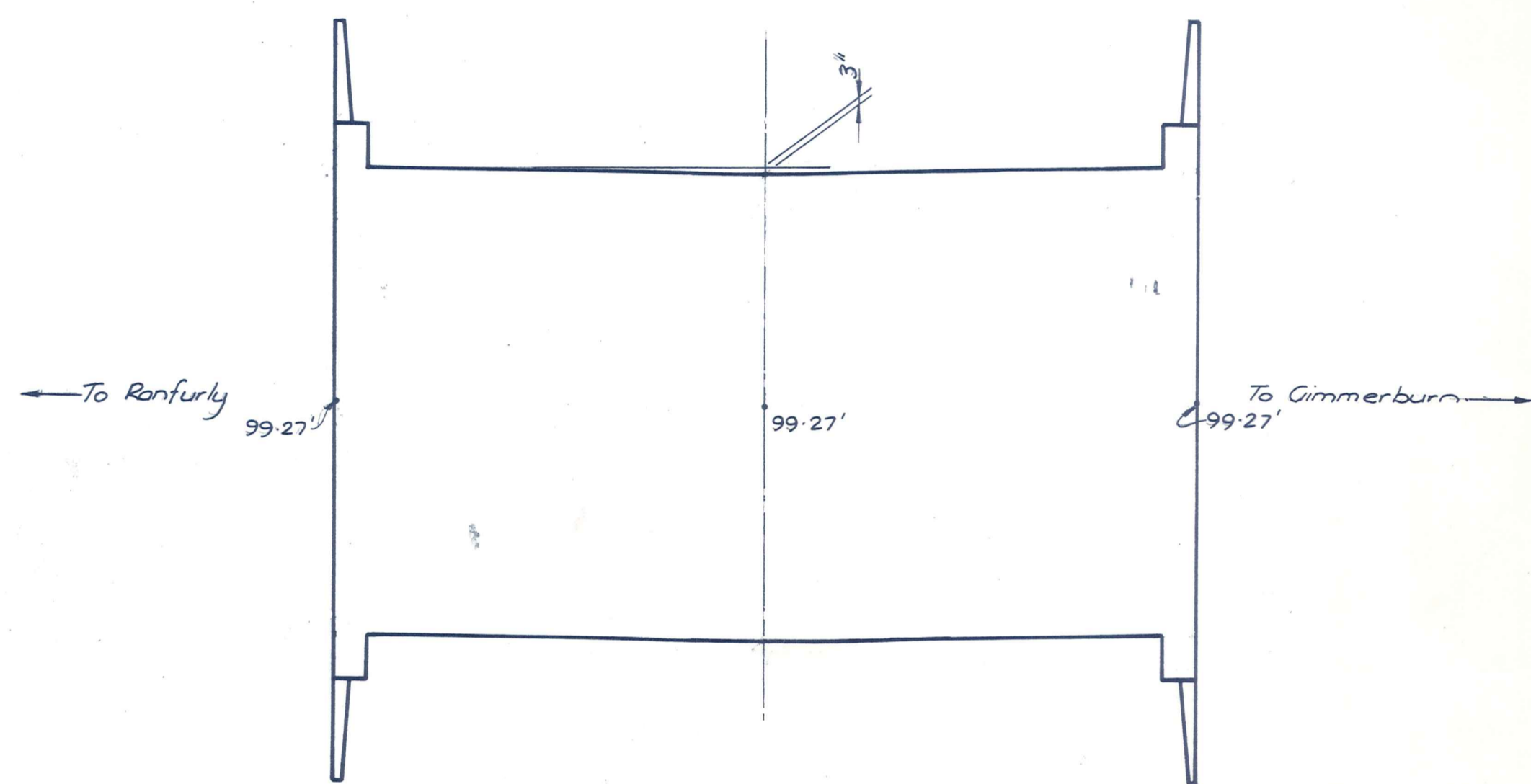
File 6/82	JOB No. 4826/1
L.Bk. 230	
F.Bk.	
Sheet 1 of 4 Sheets	



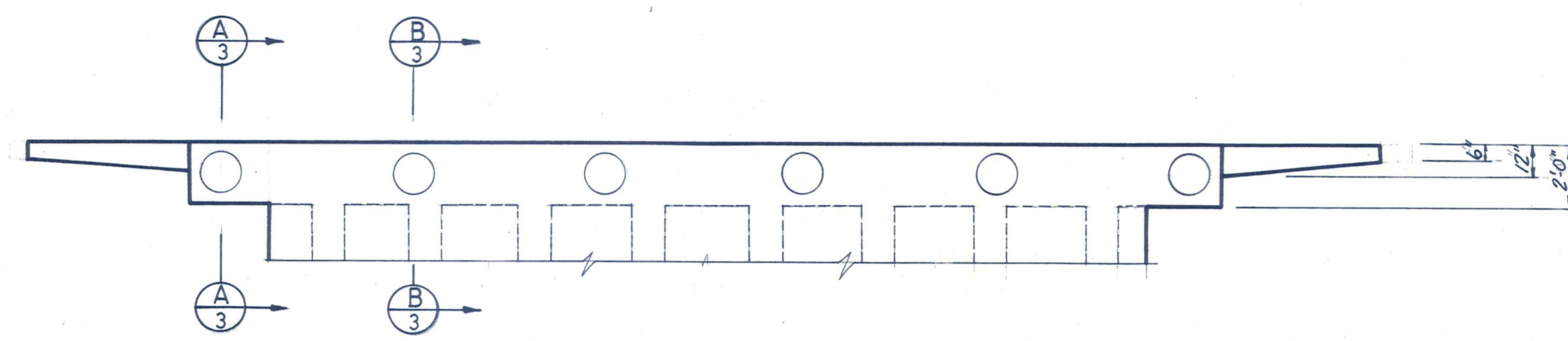
ELEVATION.
SCALE: 1/8"=1'-0"



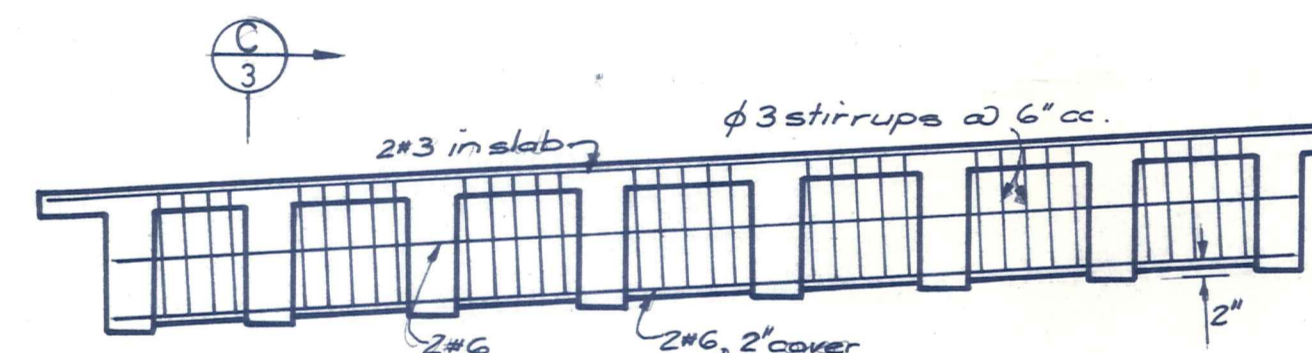
ELEVATION OF END WALL.
SCALE: 1/4"=1'-0"



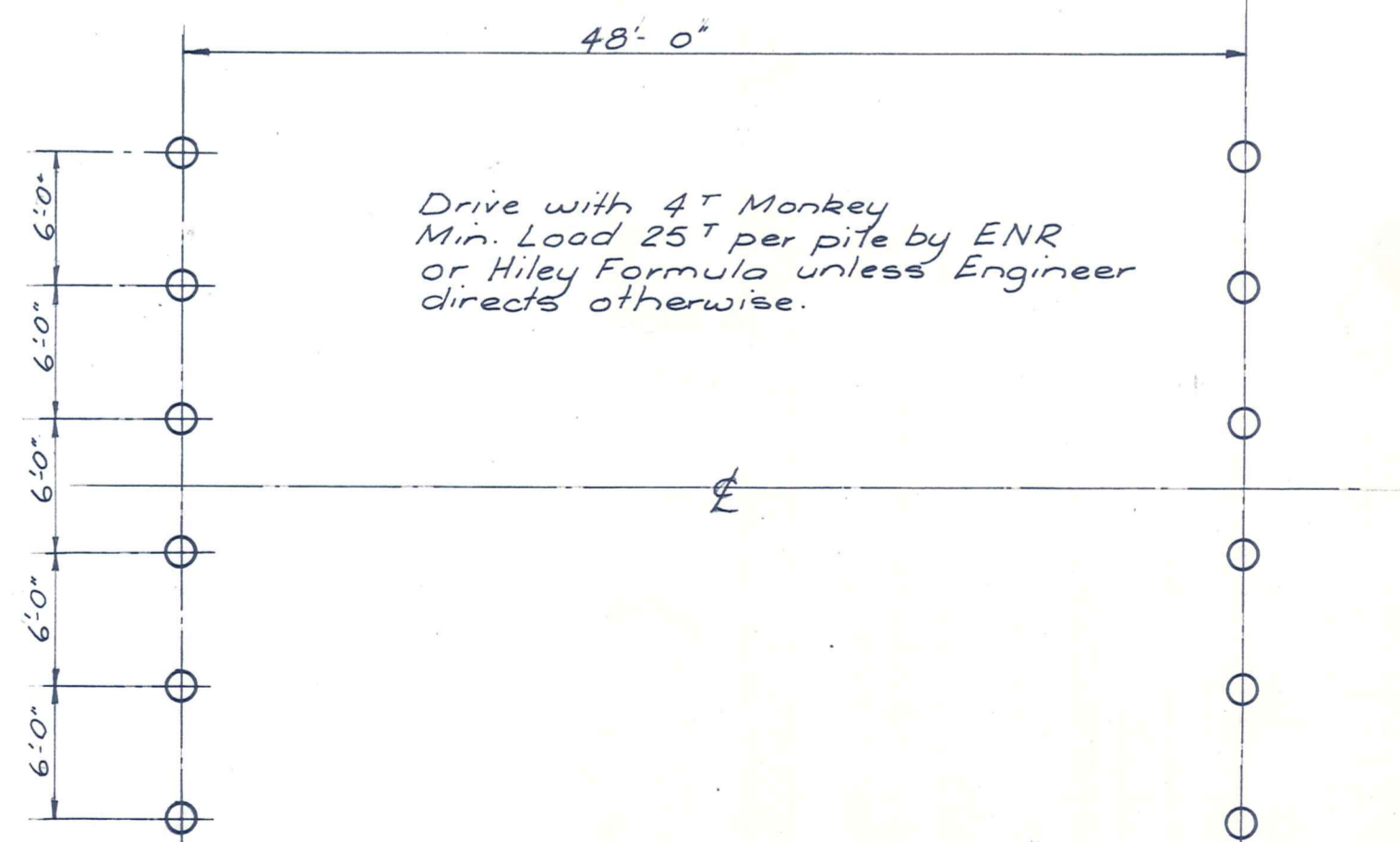
PLAN.
SCALE: 1/8"=1'-0"



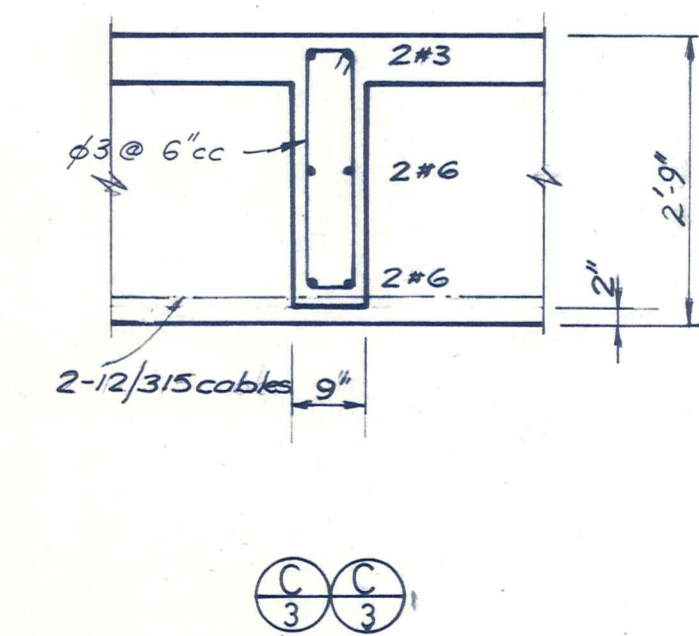
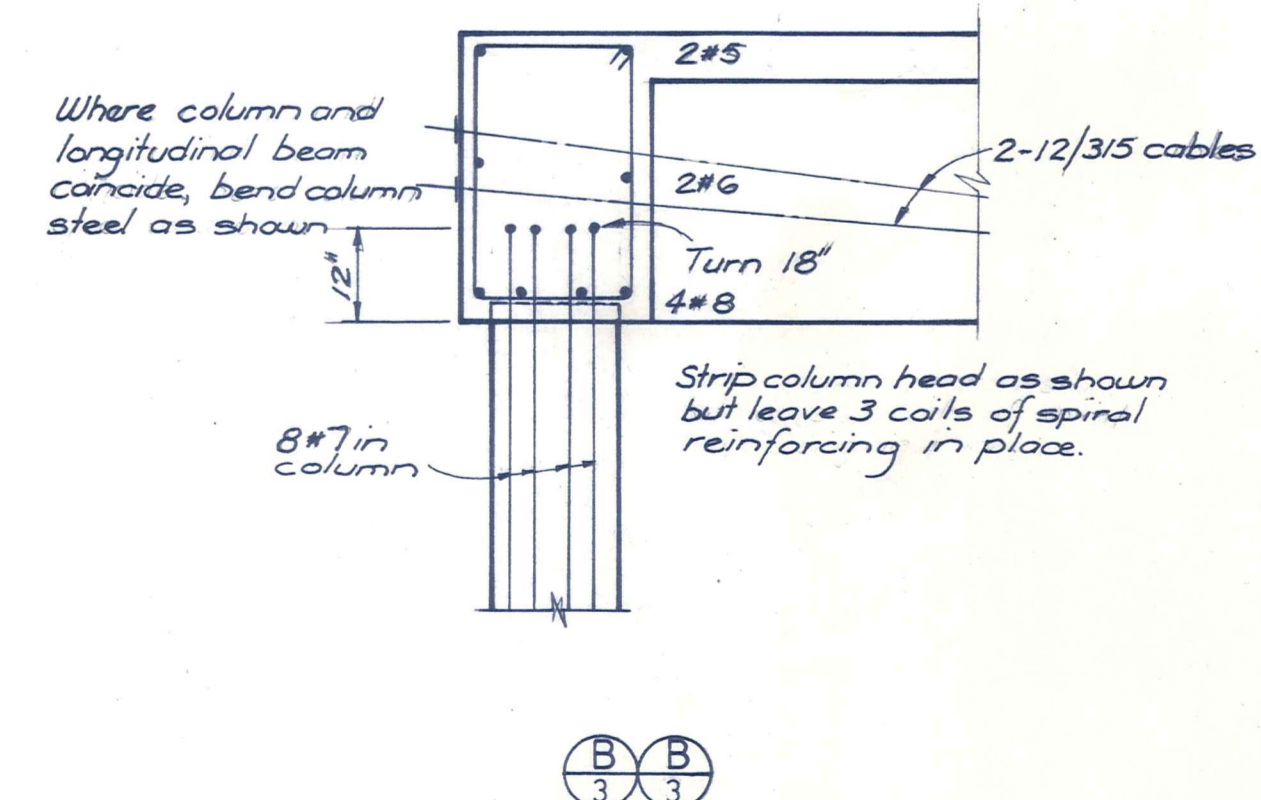
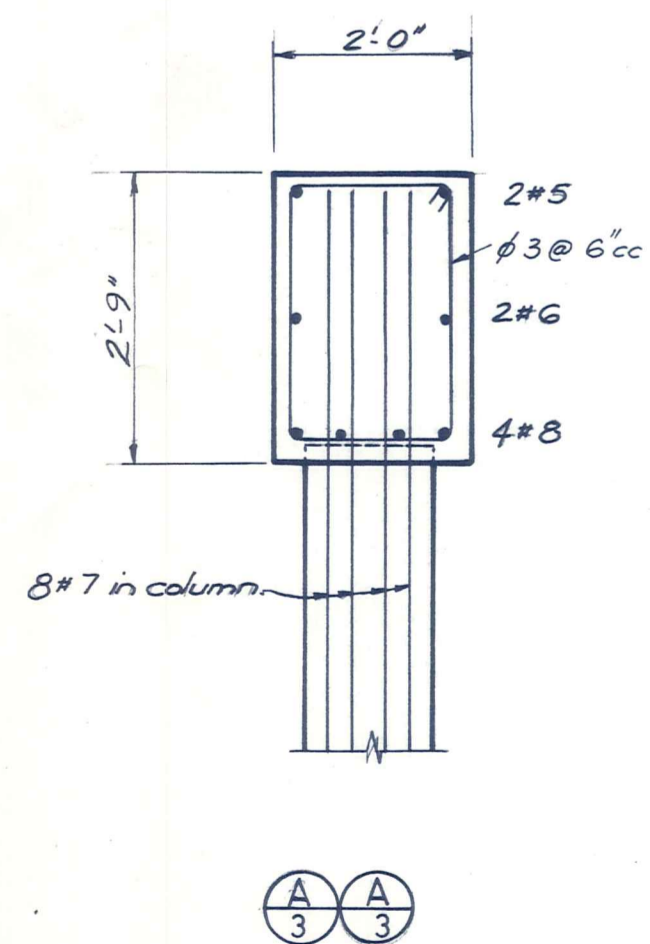
PLAN OF END WALL.
SCALE: 1/4"=1'-0"



ELEVATION OF DIAPHRAGM.
SCALE: 1/4"=1'-0"



PILE LAYOUT PLAN.
SCALE: 1/8"=1'-0"



ORIGINAL SIZE
mm INCHES
0 10 20 30 40 50 100 150 200 300
a b c d

DUFFILL WATTS & KING
CONSULTING CIVIL & STRUCTURAL ENGINEERS
Dunedin P.O. Box 5269, Ph. 77-240 Invercargill P.O. Box 576, Ph. 3049
Christchurch 139 Clyde Rd., Ph. 515-801

MANIOTOTO
COUNTY COUNCIL

EWEBURN BRIDGE BARNEY'S LANE

AMENDMENTS			NAME	DATE	JOB NO.	Sheet No.
NO.	BY	DATE	Appvd.	Surveyed	4826/3	of 4 sheets
				Drawn		
				Calculations		
				Traced		
				Checked		
				Approved	File 6/82	L.B. 230

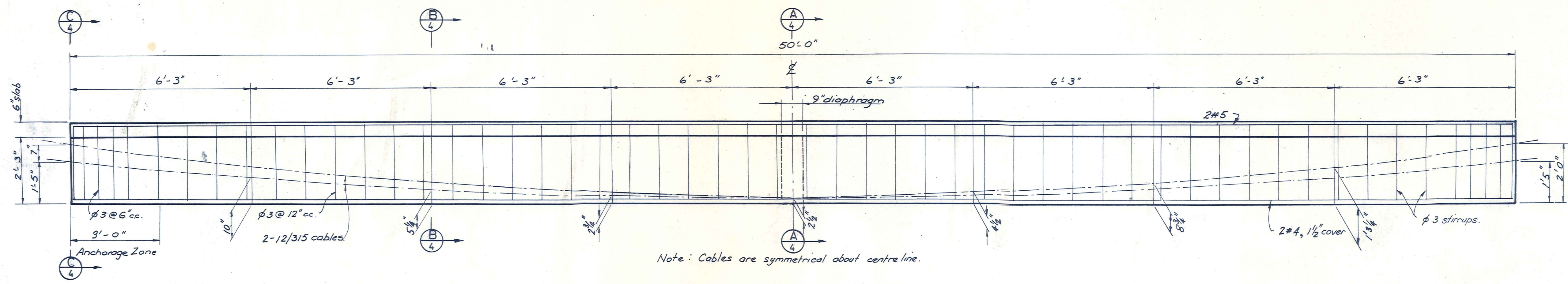
MANIOTOTO COUNTY COUNCIL

M. Meenan

JOB NO.

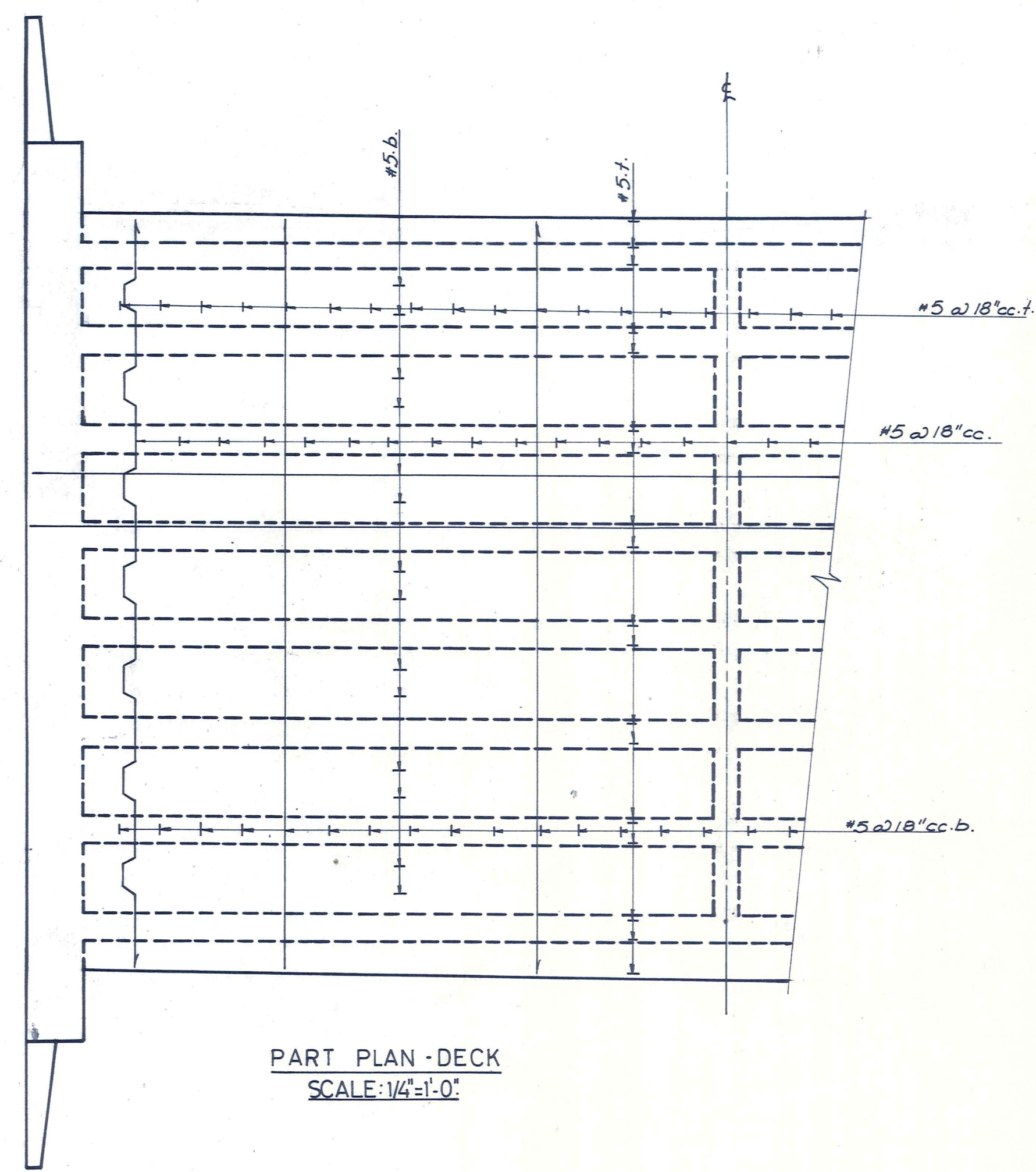
4826/3

F.B.

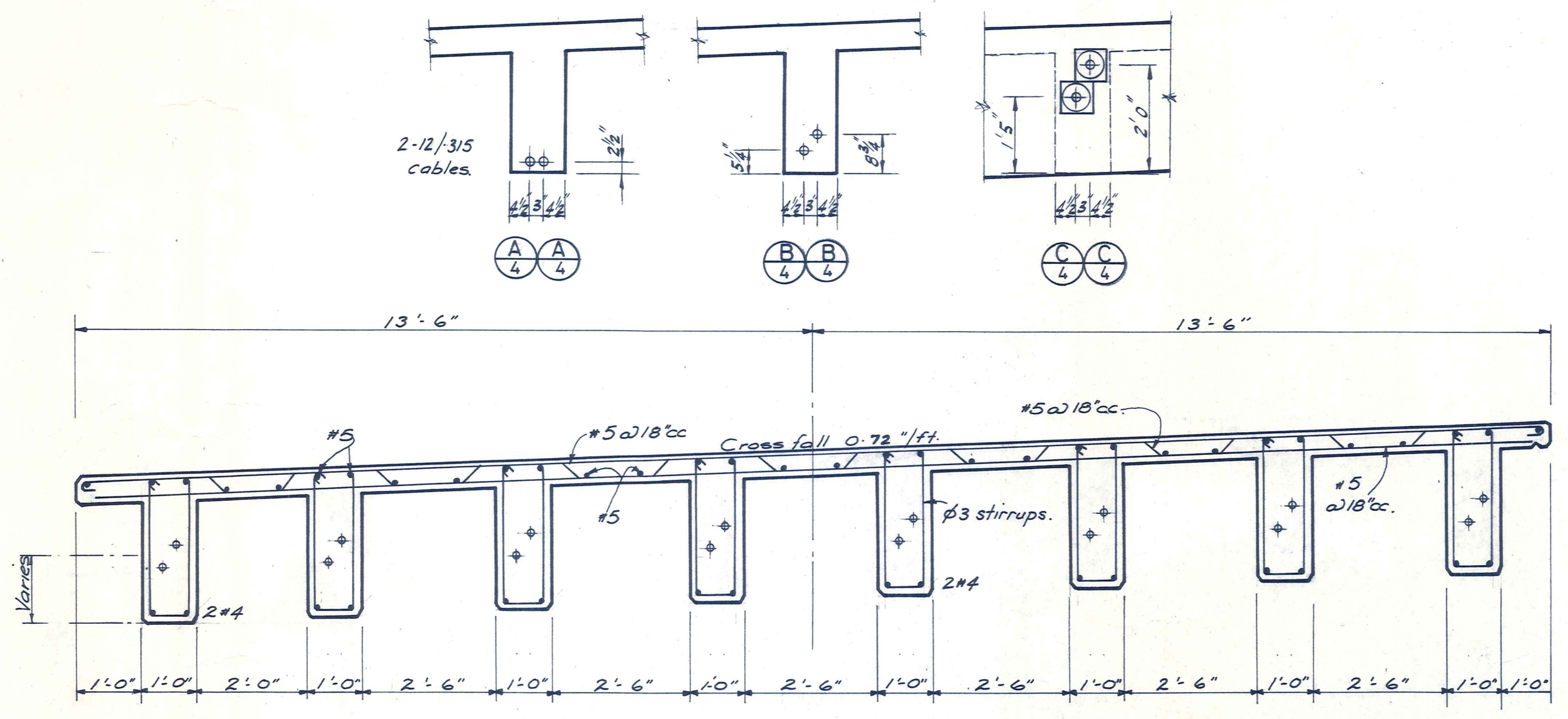


Note: Cables are symmetrical about centreline.

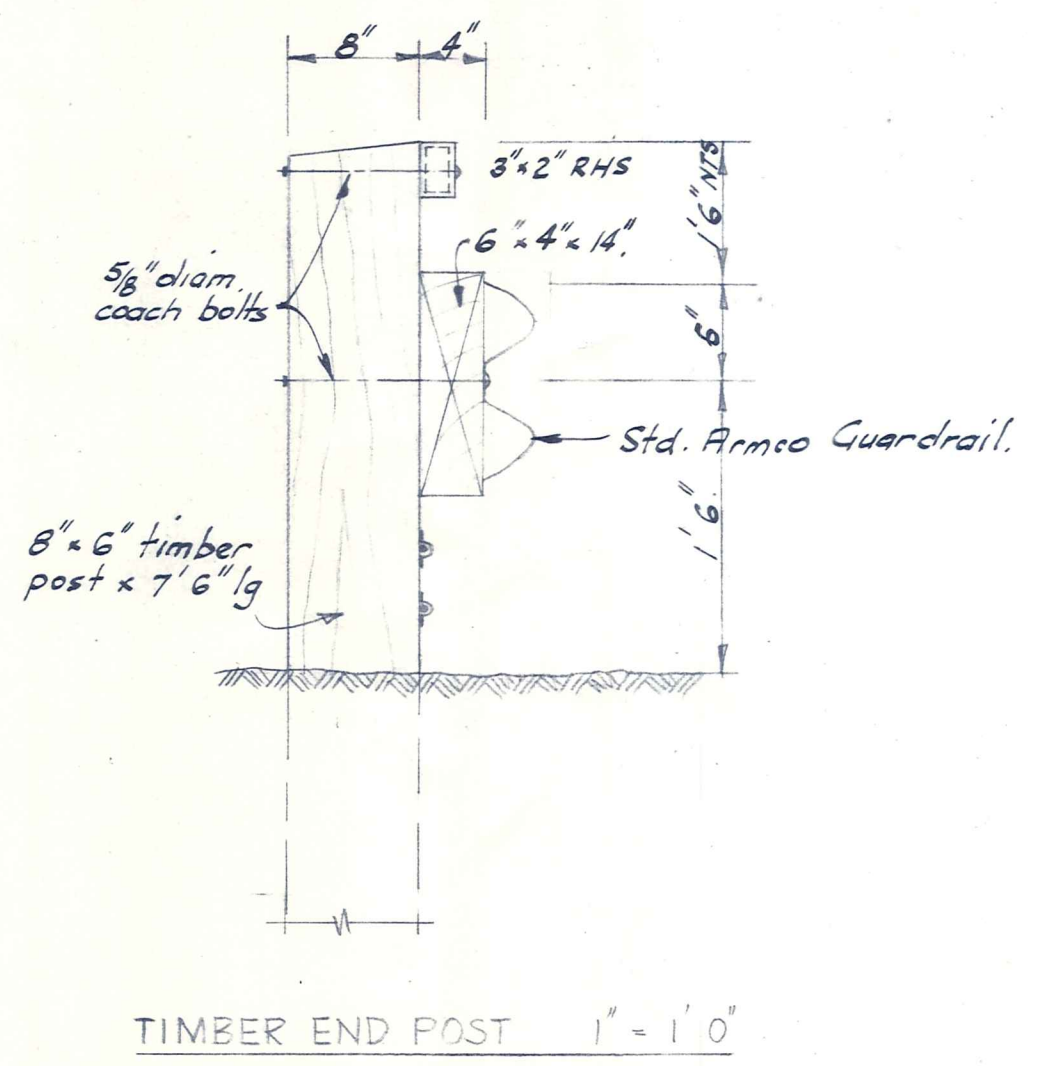
BEAM ELEVATION (8 Req'd)
SCALE: 1/2"=1'-0"



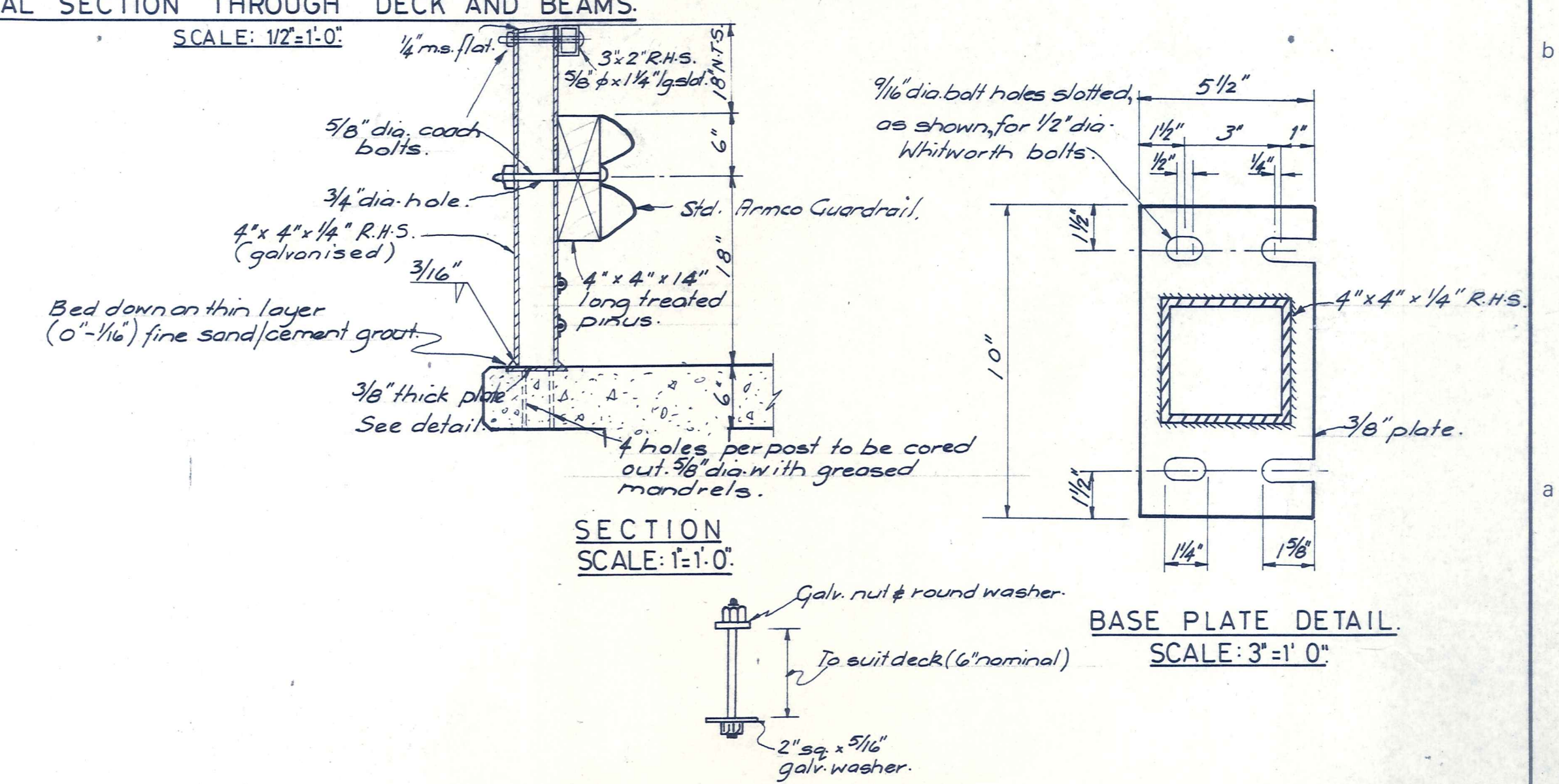
PART PLAN - DECK
SCALE: 1/4"=1'-0"



TYPICAL SECTION THROUGH DECK AND BEAMS.
SCALE: 1/2"=1'-0"



TIMBER END POST 1"=1'-0"



SECTION
SCALE: 1"=1'-0"

BASE PLATE DETAIL
SCALE: 3"=1'-0"

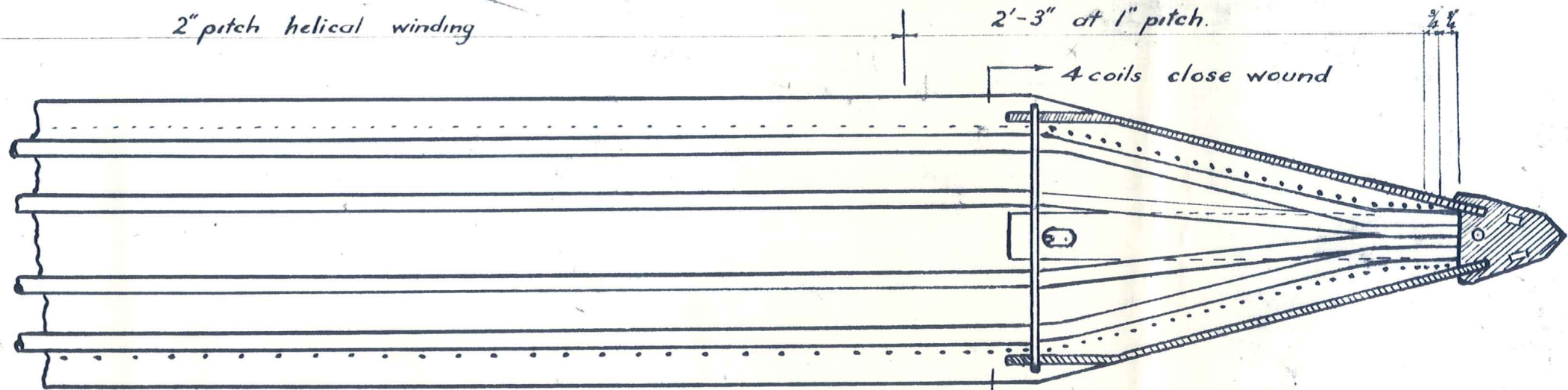
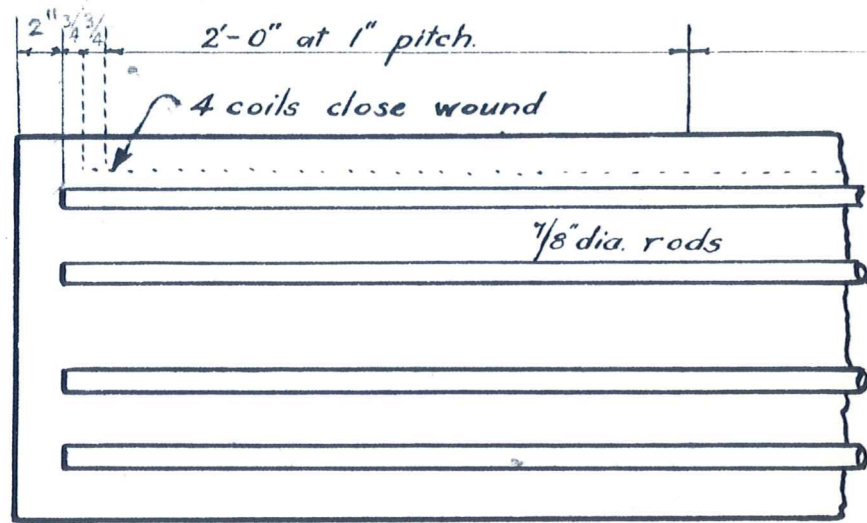
DUFFILL WATTS & KING
CONSULTING CIVIL & STRUCTURAL ENGINEERS
Dunedin P.O. Box 5269, Ph. 77-240 Invercargill P.O. Box 576, Ph. 3049
Christchurch 139 Clyde Rd., Ph. 515-801

MANIOTOTO
COUNTY COUNCIL

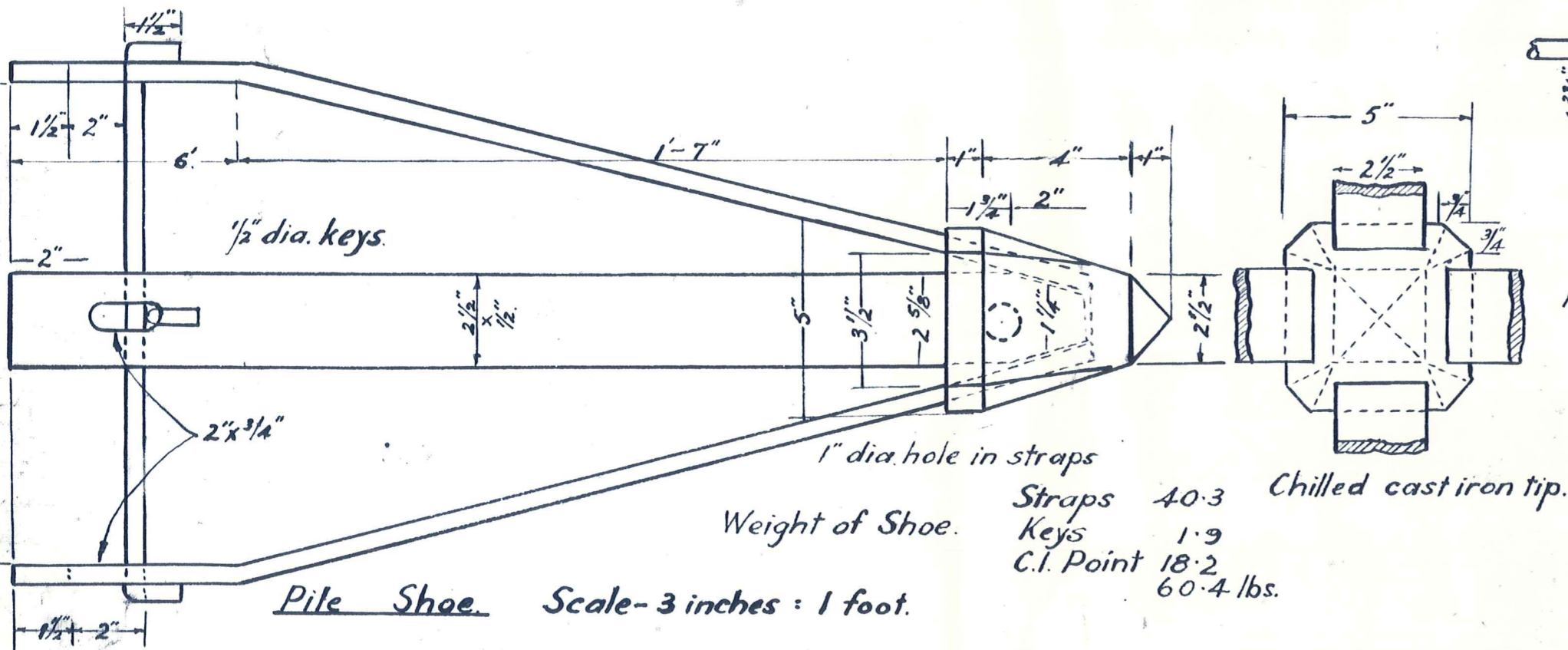
EWEBURN BRIDGE BARNEY'S LANE

AMENDMENTS			NAME		DATE	JOB NO.	Sheet No.	
NO.	BY	DATE	Appvd.	Surveyed		4826/4	of 4 sheets	
				Drawn	G. Brown, June '72			
				Calculations				
				Traced	M.E. Gill, June '72			
				Checked				
				Approved		File 6/82	L.B. 230	F.B.

MANIOTOTO COUNTY COUNCIL
M. Melcher



Scale: 1 1/2" inches = 1 foot.

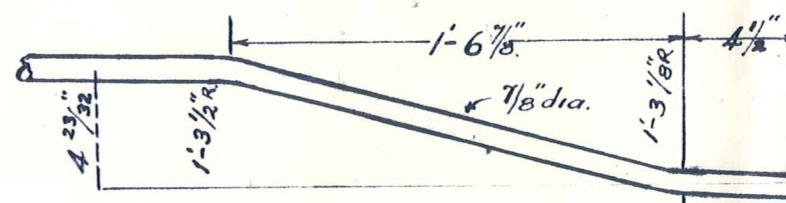


Pile Shoe. Scale - 3 inches = 1 foot.

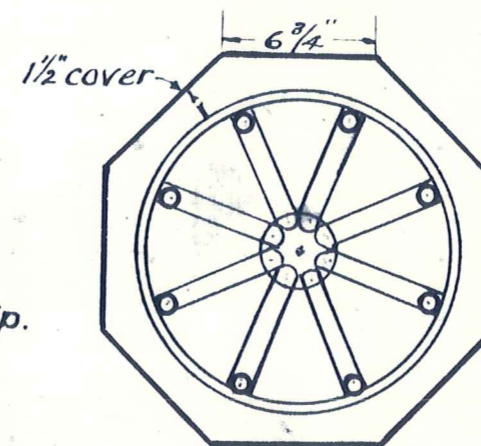
Weight of Shoe.

Straps 40.3
Keys 1.9
C.I. Point 18.2
60.4 lbs.

Chilled cast iron tip.



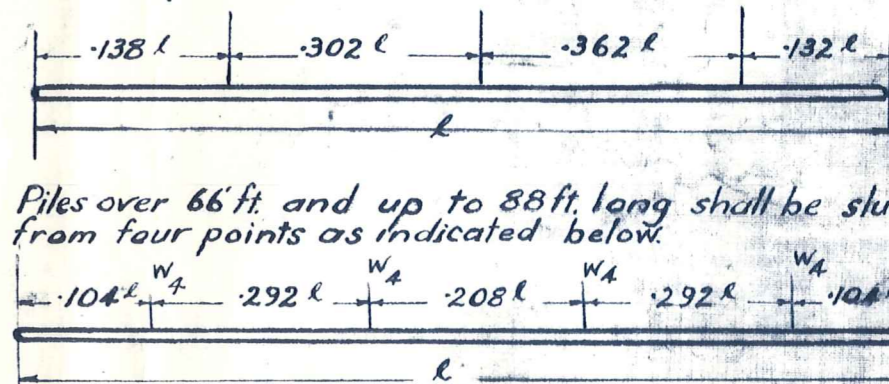
CRANKED END OF PILE ROD



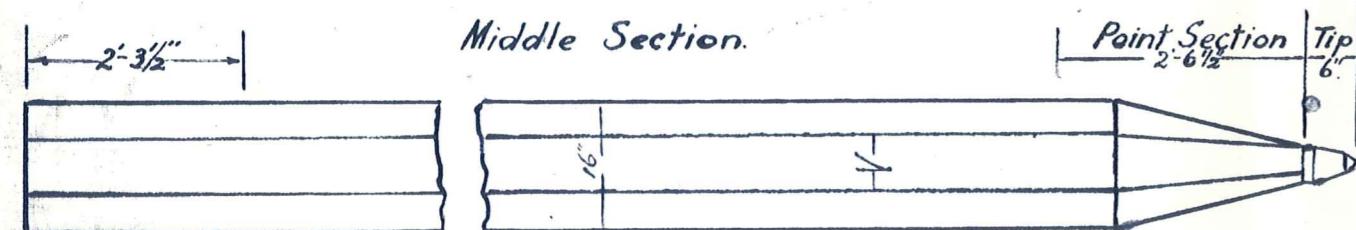
SECTION X.X.

METHODS OF LIFTING AND HANDLING PILES

1. Piles under 20ft. long may be slung from a single point located anywhere along the pile.
2. Piles from 20ft. to 31 ft. long may be slung from a single point located a distance of 0.293 L from the pile head.
3. Piles over 31 ft. and up to 45ft. shall be slung from two points located a distance of 0.207 from each end.
4. Piles over 45 ft. and up to 66 ft. long shall be slung from three points as indicated below.



5. Piles over 66 ft. and up to 88 ft. long shall be slung from four points as indicated below.



WEIGHTS OF PILES OF VARIOUS LENGTHS

Scale 1/2" : 1'-0"

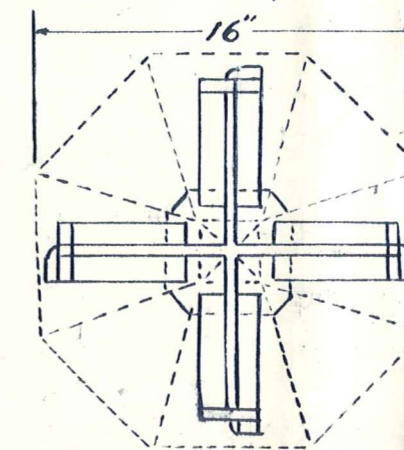
NOMINAL Length in Feet.	10	15	20	25	30	35	40	45	50	55	60
Weight in Tons.	.87	1.37	1.86	2.35	2.84	3.34	3.83	4.32	4.82	5.31	5.80

NOTE

Minimum weight of monkey for piles under 30 feet only is 3 tons provided specified bearing does not exceed 25 tons. If bearing exceeds 25 tons a 4 ton monkey must be used irrespective of the pile length.

QUANTITIES

16' Oct. Pile.	Concrete (cub.ft.)	7/8" dia Rods (lin. ft.)	N° 6, 9 Wire (lin ft)
Top Section 2'-3 1/2" long.	3.375	17	94
Middle Section per foot run	1.473	8	20.25
Point Sections 2'-6 1/2" long.	2.229	20.66	75



PLAN OF SHOE

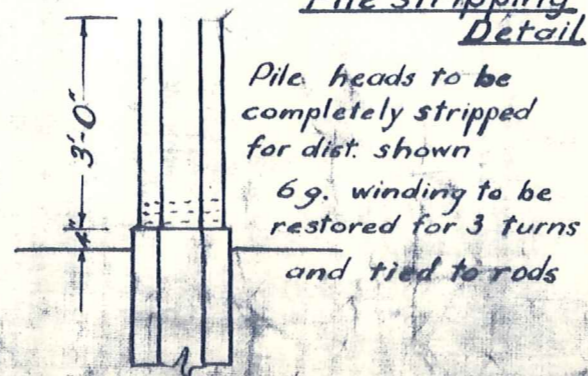
For arrangements involving more than two points of pick up, a suitable system of pulleys and/or beam must be used to give equal vertical reactions of each point.

NOTE

The above is based on a limiting stress of 12000 lbs./sq.in. in the steel, assuming 100% impact during lifting.

NOTE Nominal length of Pile: Length of reinforcing steel

Pile stripping Detail

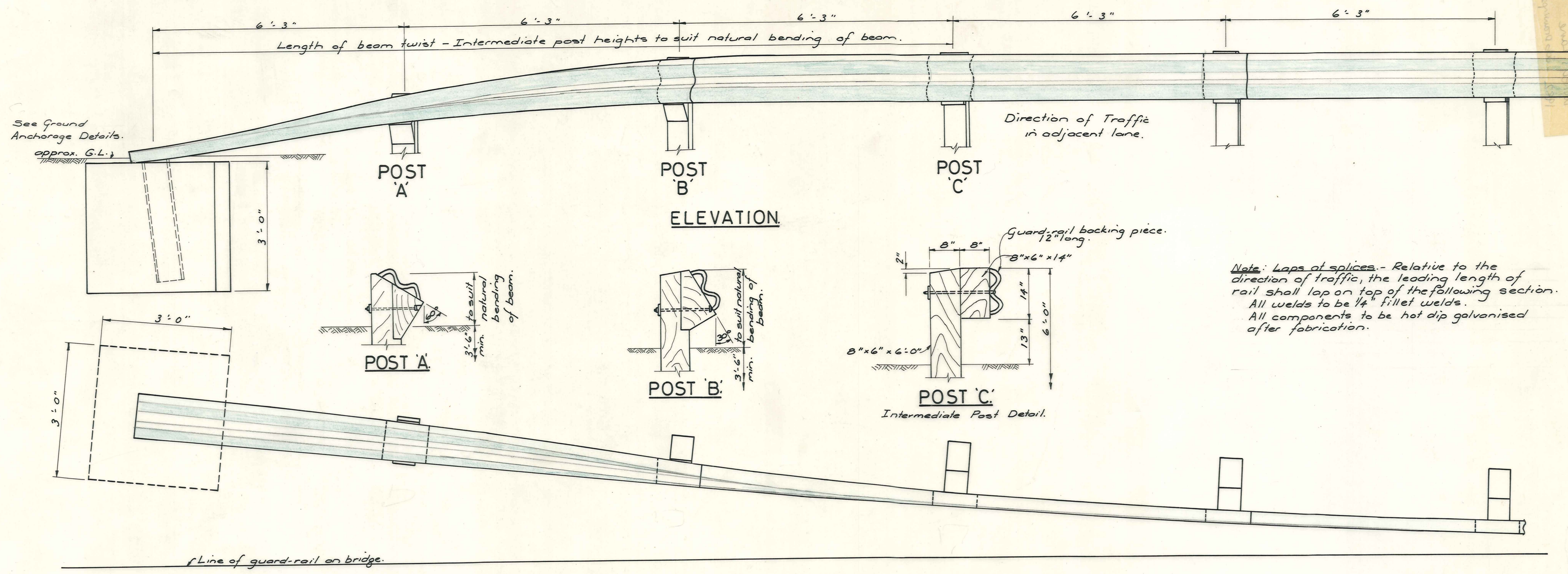


Pile heads to be completely stripped for dist. shown
6g. winding to be restored for 3 turns and tied to rods

STANDARD 16" OCTAGONAL REINF. CONG. PILE.

P.W.D 127636 Piles wound helically with N° 6.G (s.w.g.) wire.

DUFFILL, WATTS & KING.
CONSULTING ENGINEERS & SURVEYORS.
DUNEDIN & INVERCARGILL.



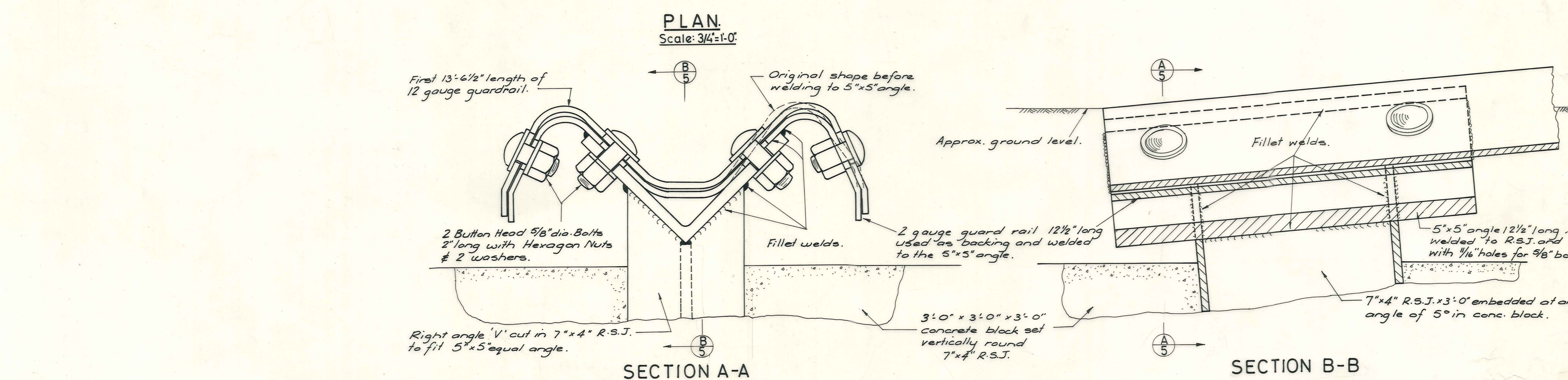
Note: Laps of splices - Relative to the direction of traffic, the leading length of rail shall lap on top of the following section. All welds to be 1/4" fillet welds. All components to be hot dip galvanized after fabrication.

300 12 11 10 9 8 7 6 5 4 3 2 1 0

300 12 11 10 9 8 7 6 5 4 3 2 1 0

300 12 11 10 9 8 7 6 5 4 3 2 1 0

mm INCHES



DUFFILL WATTS & KING
CONSULTING CIVIL & STRUCTURAL ENGINEERS
Dunedin P.O. Box 5269, Ph. 77-240 Invercargill P.O. Box 576, Ph. 3049
Christchurch 139 Clyde Rd., Ph. 515-801

MANIOTOTO COUNTY COUNCIL

EWEBURN BRIDGE BARNEY'S LANE

AMENDMENTS				NAME	DATE	JOB NO.	Sheet No.
NO.	BY	DATE	Appvd.	Surveyed		4826	of 5 sheets
				Drawn			
				Calculations			
				Traced	M.E. Gill July '72		
				Checked			
				Approved		File 6/82	L.B. 230

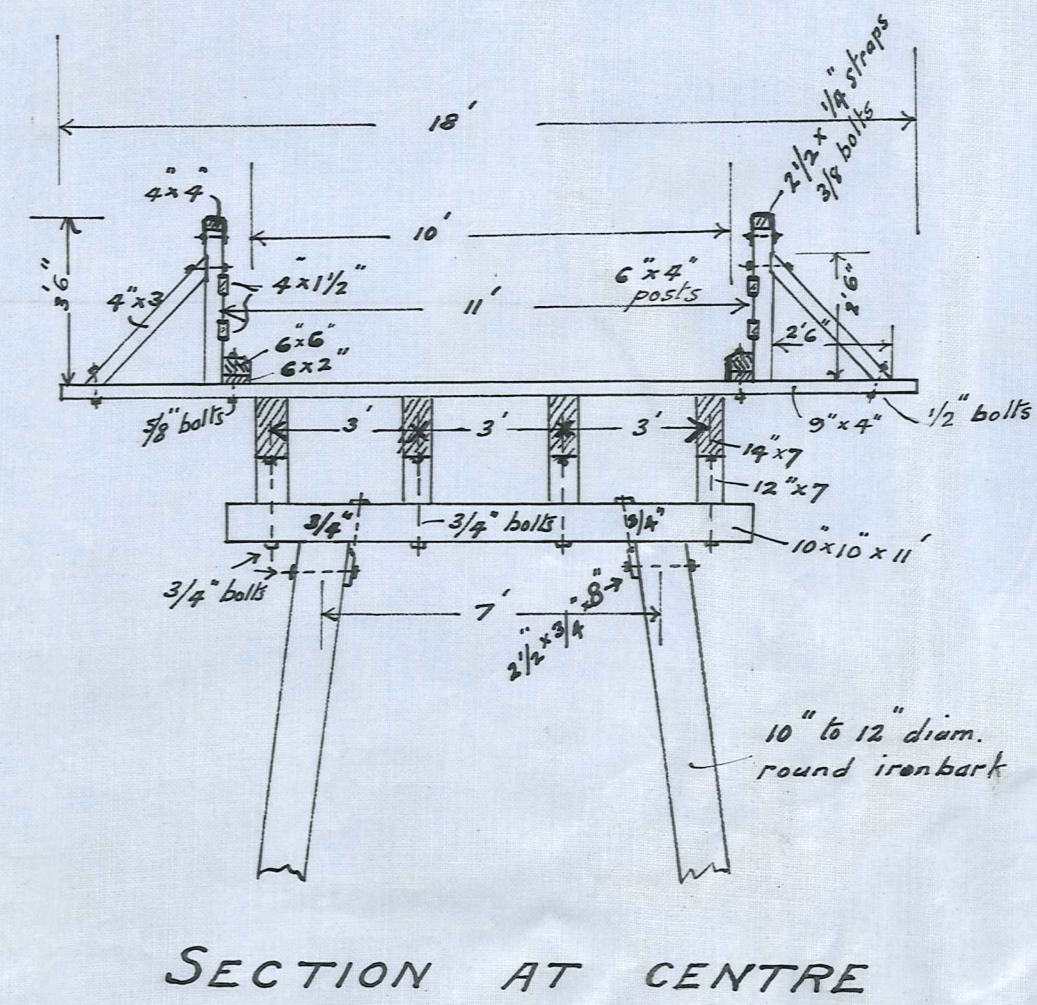
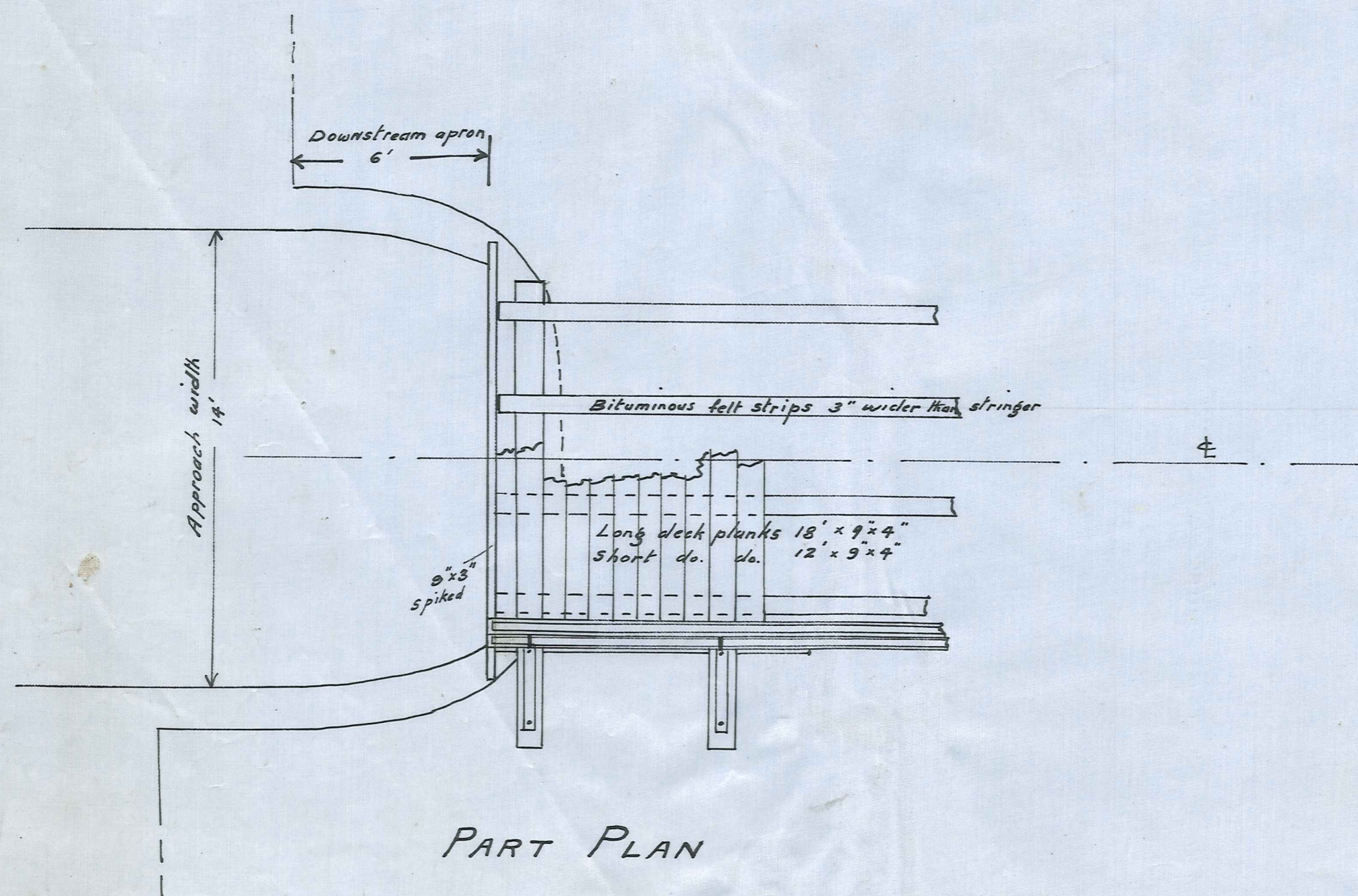
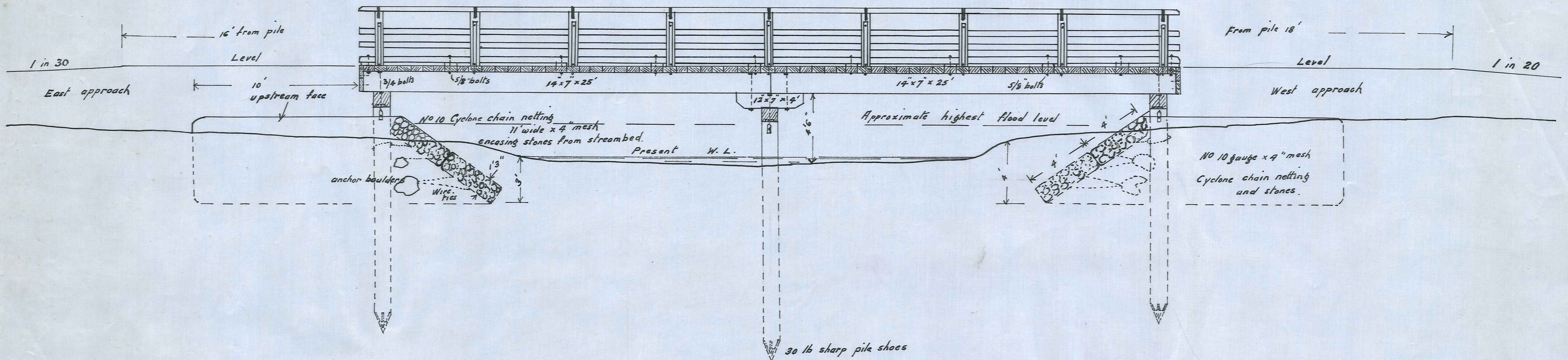
Traced from M.O.W drawing 13966.

MANIOTOTO COUNTY

EWEBURN BRIDGE

BARNEY'S LANE

Scale: 4 Feet to an Inch



M.C.C. 063

P. J. Black
3.5.28.