

4 ton monkey req.
Min bearing by ENR formula
Piers 28 ton Abutment 24 ton.

Note: Contractor to verify all dimensions on job.

Proposed OCB Stream Improvements
Scales: 10" ch to 1" M Horiz 10" H to 1" M Vert.

OCB Peg No	OCB Peg Level	OCB Invert
69	57.31	57.01
70	57.76	57.46
71	58.32	58.02
72	58.61	58.31
73	58.20	57.90
76	58.30	58.00
79	58.12	57.82
81	58.89	58.59
84	58.85	58.55
86	58.62	58.32
89	58.48	58.18

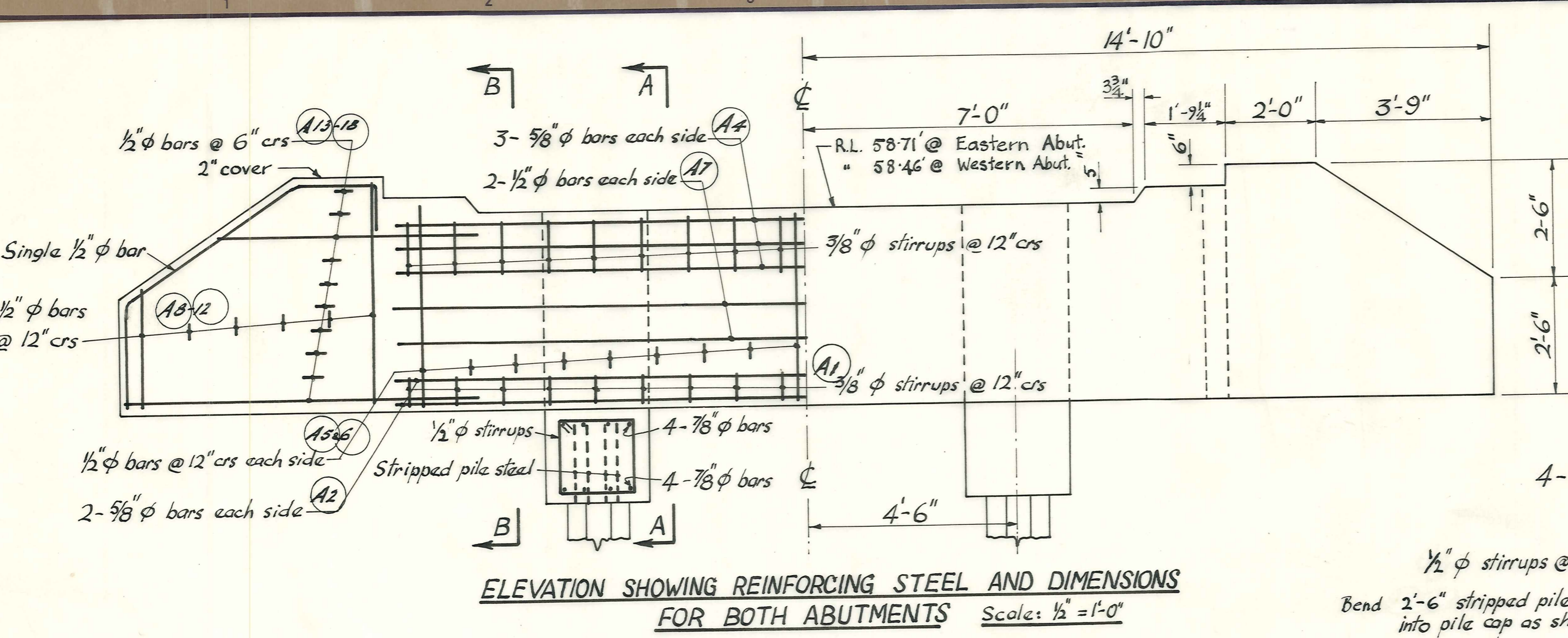
VINCENT COUNTY COUNCIL.

FRASER DOMAIN BRIDGE

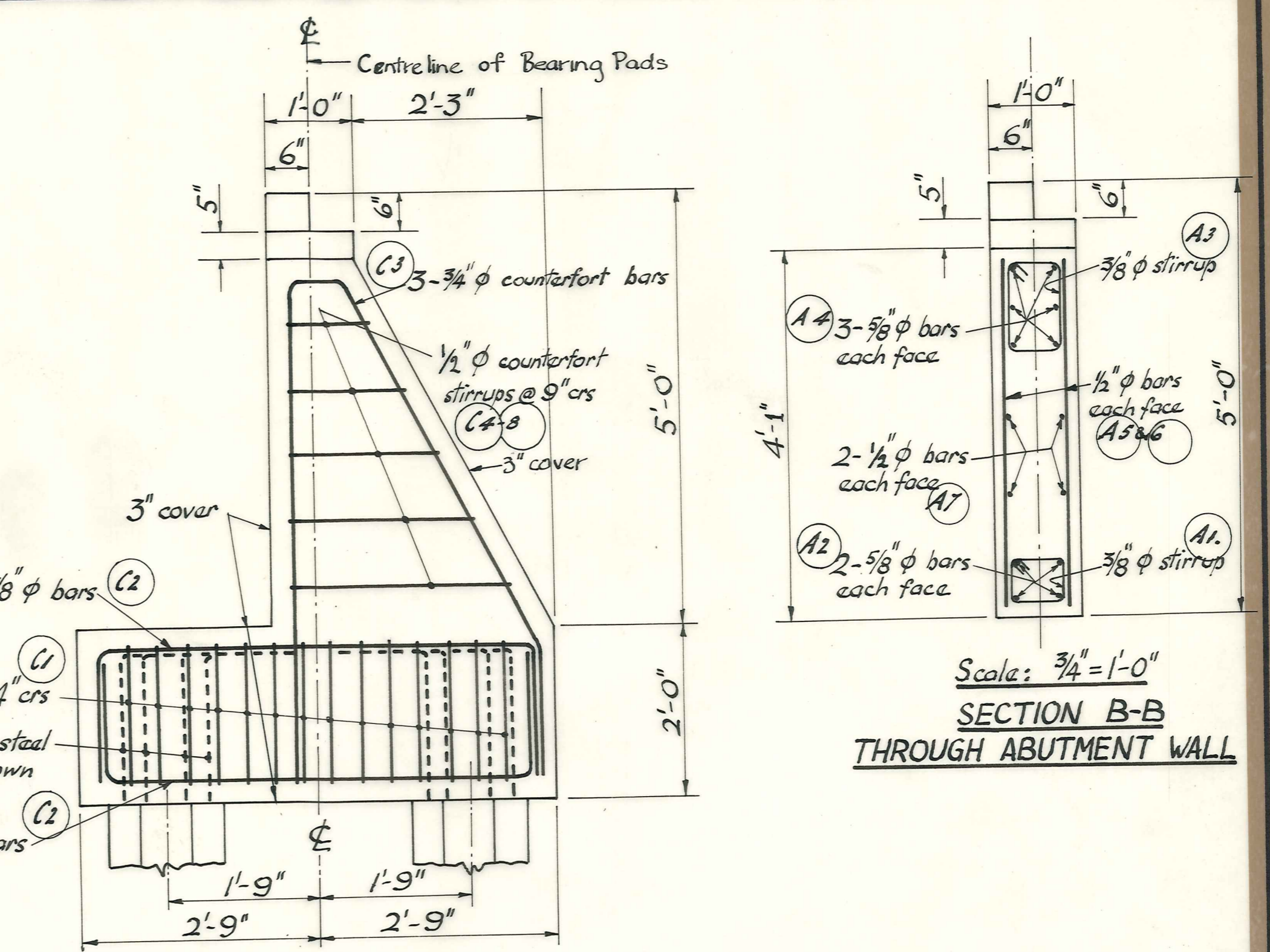
DUFFILL, WATTS & KING
CONSULTING CIVIL & STRUCTURAL ENGINEERS
DUNEDIN and INVERCARGILL

NAME	DATE
GDillon	June '65
IRP	June '65
IRParman	June '65

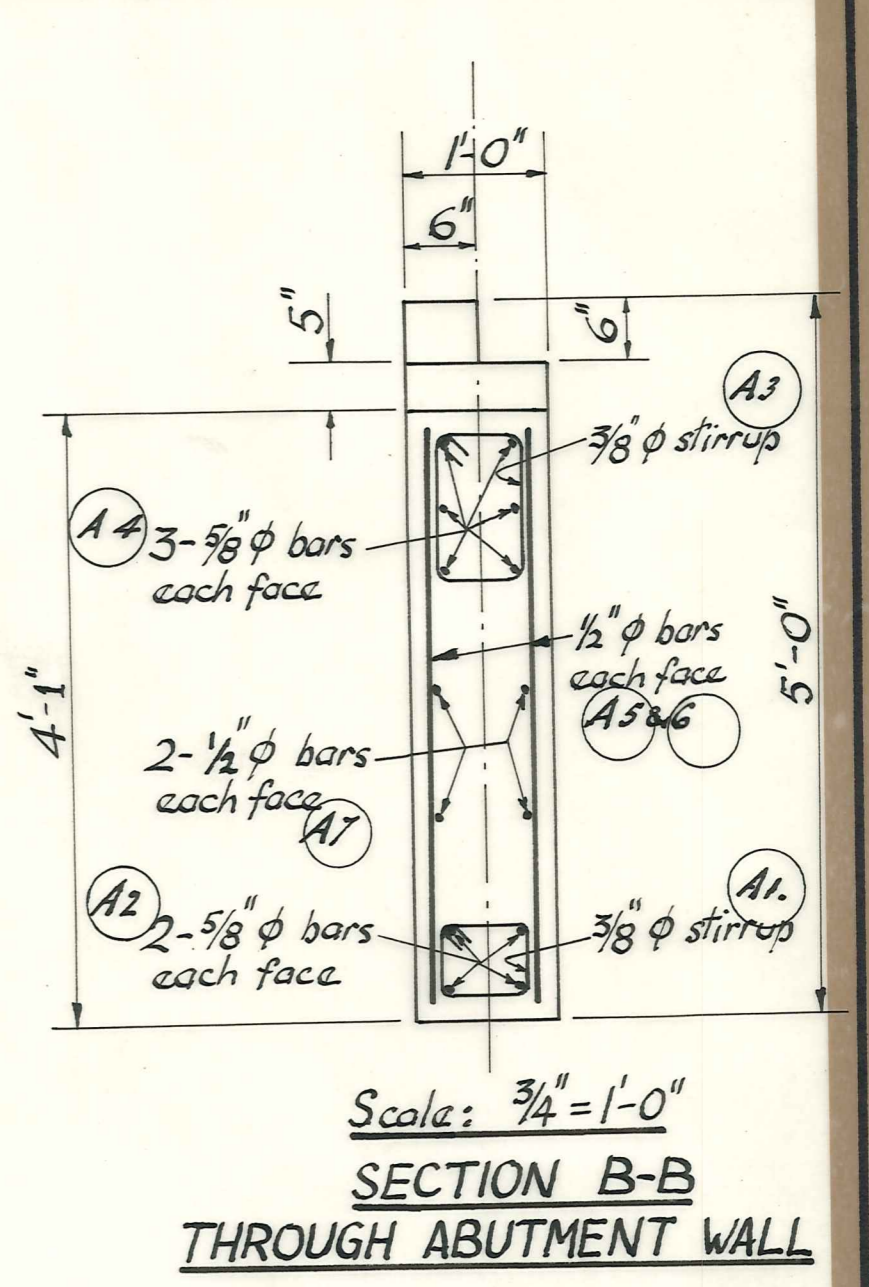
JOB No.
4531/1
F.B.K. 191 FILE No. 4/53



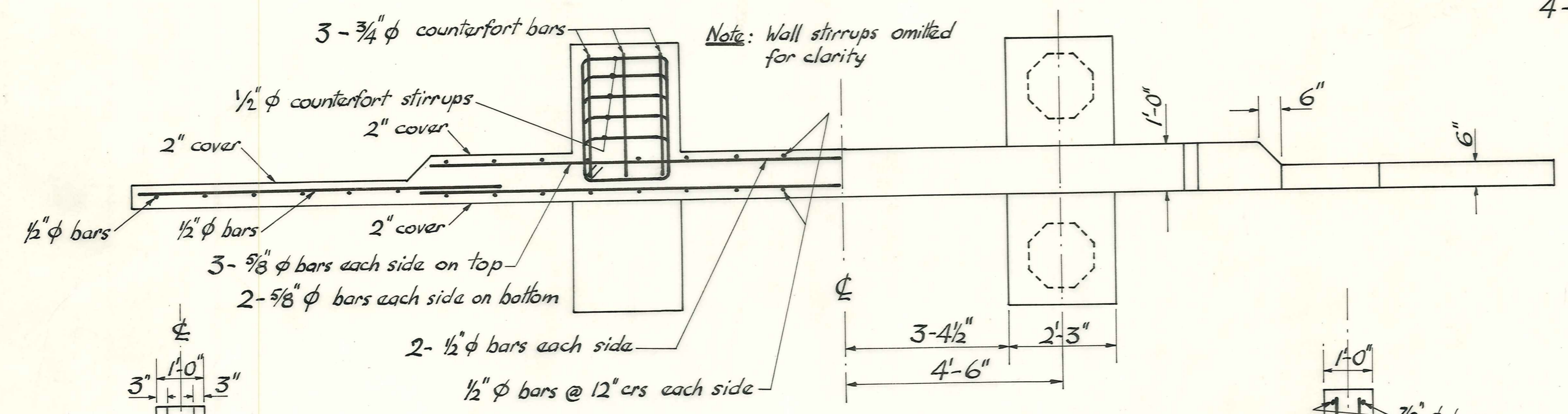
ELEVATION SHOWING REINFORCING STEEL AND DIMENSIONS FOR BOTH ABUTMENTS Scale: 1/2" = 1'-0"



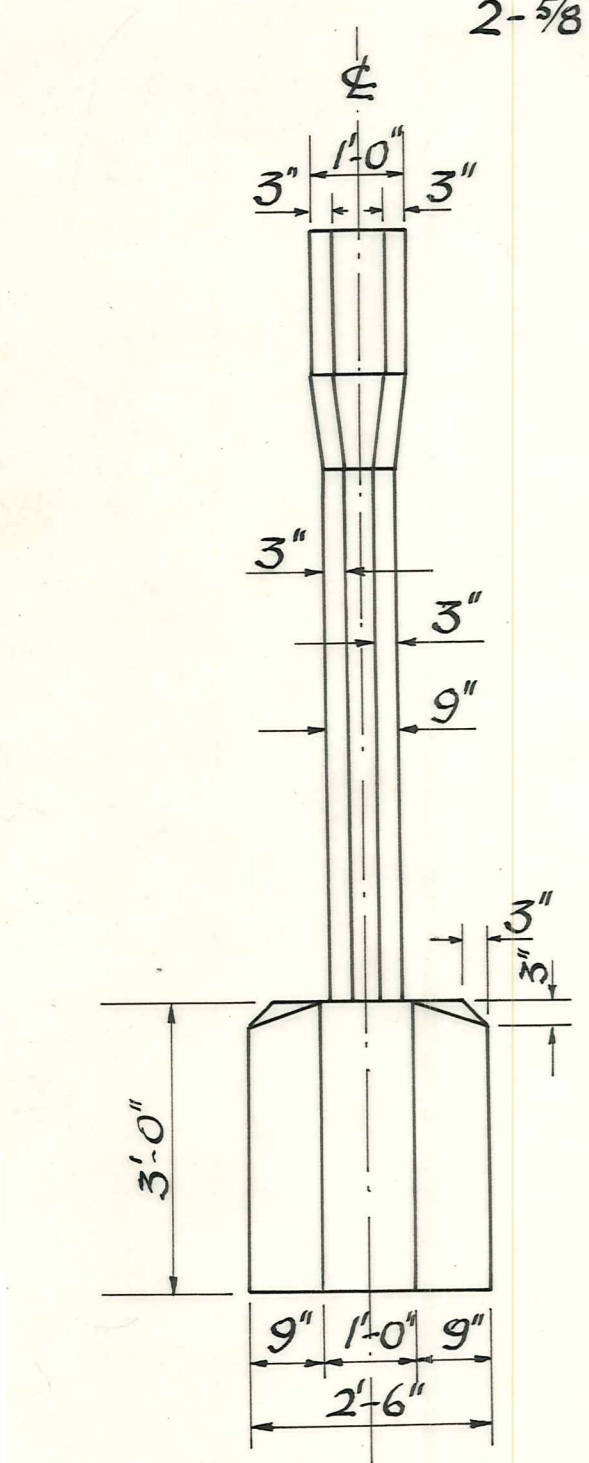
SECTION A-A SHOWING COUNTERFORT AND PILE CAP STEEL Scale: 3/4" = 1'-0"



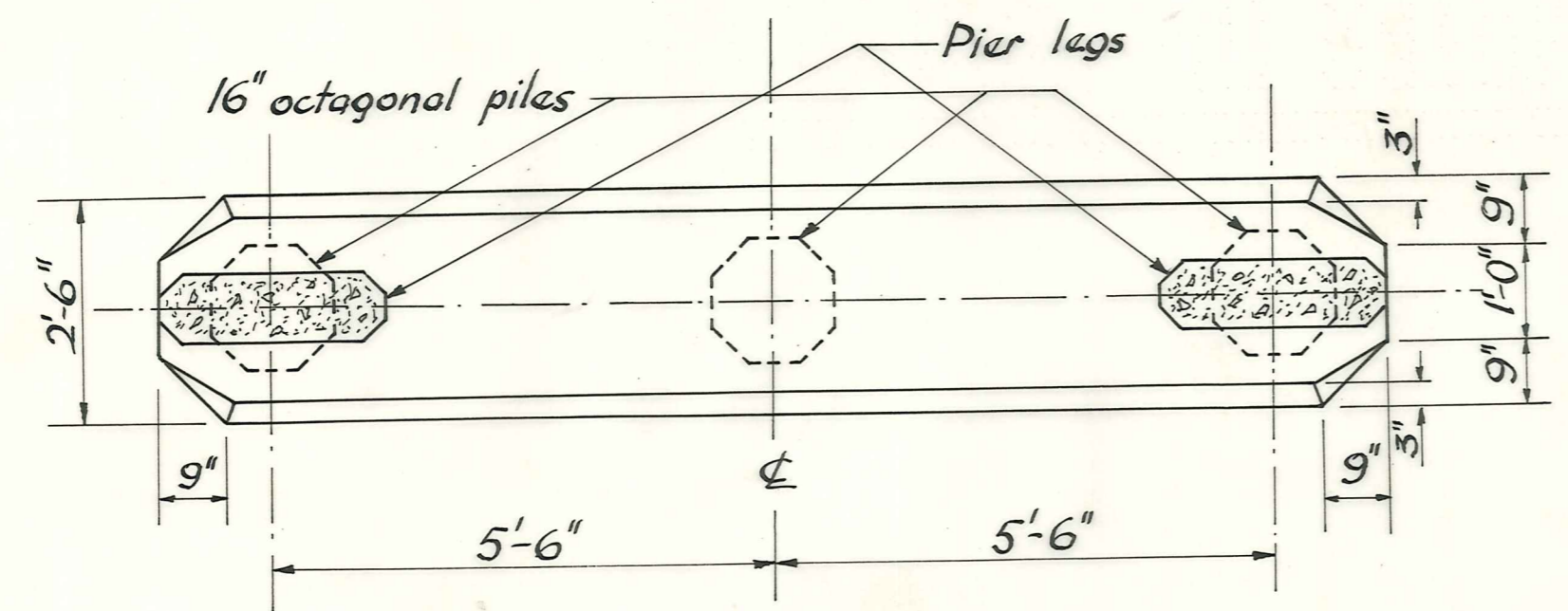
SECTION B-B THROUGH ABUTMENT WALL Scale: 3/4" = 1'-0"



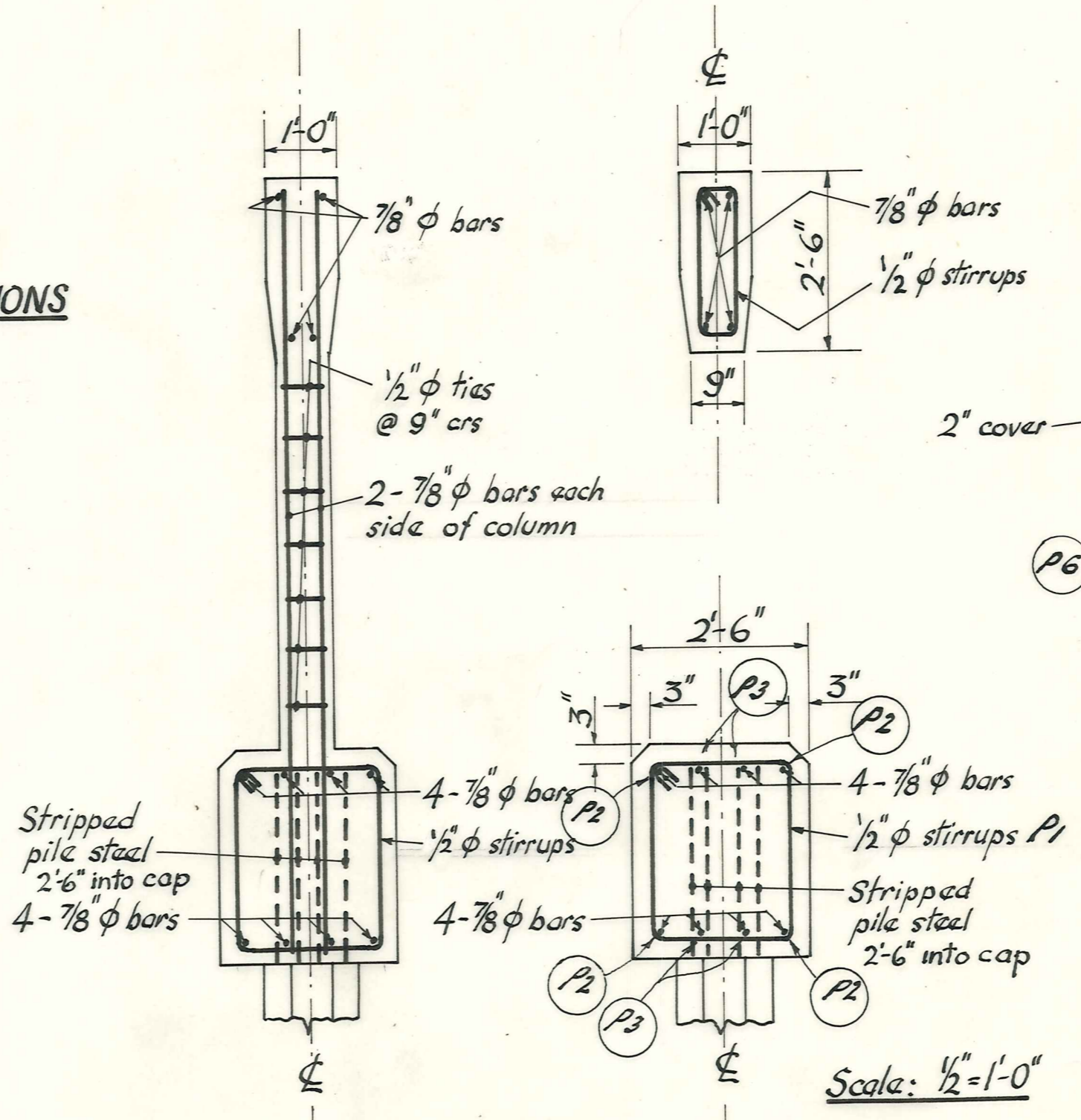
PLAN SHOWING REINFORCING STEEL AND DIMENSIONS FOR BOTH ABUTMENTS Scale: 1/2" = 1'-0"



FRONT & BACK ELEVATION OF PIERS Scale: 1/2" = 1'-0"

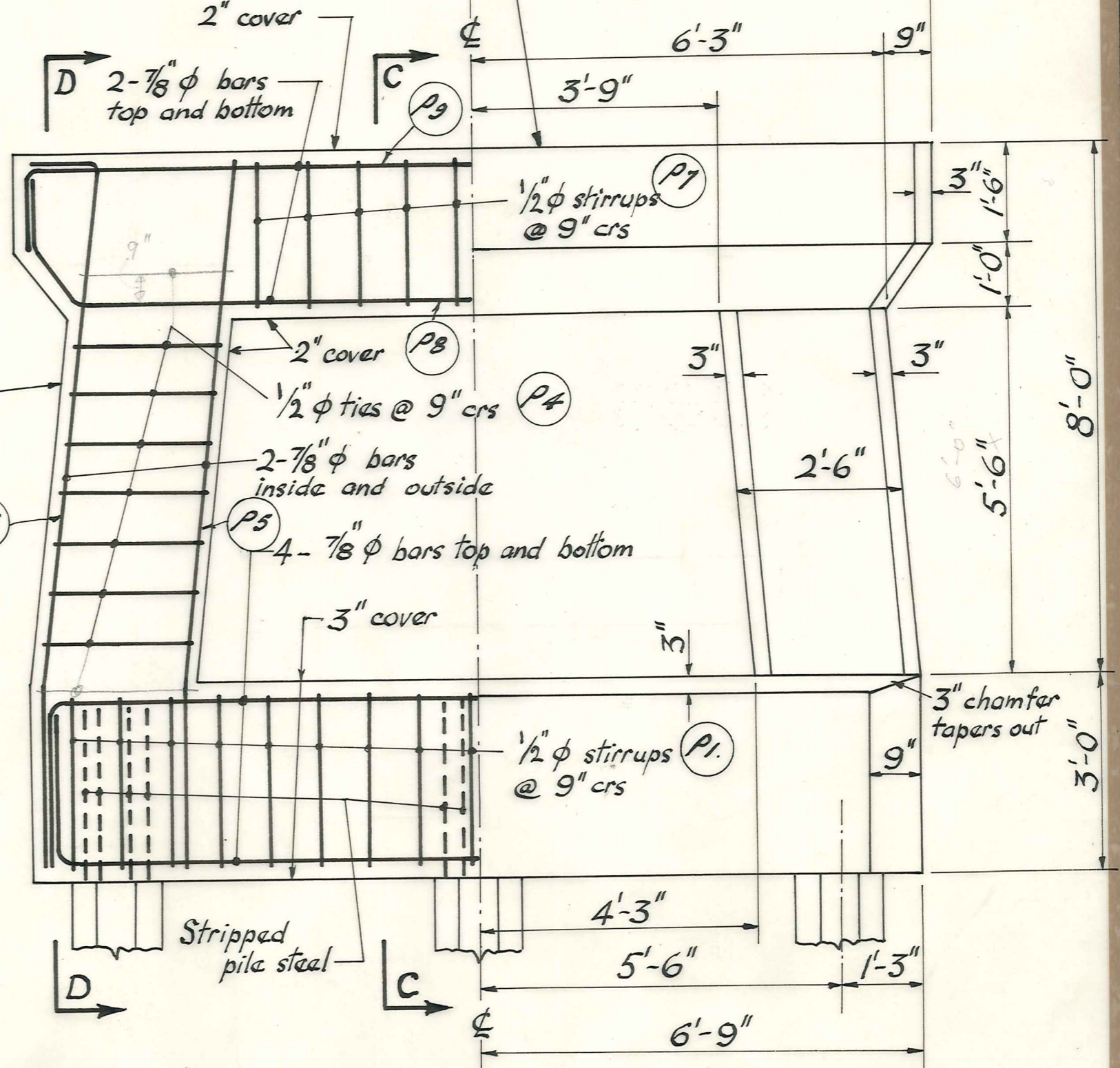


PLAN VIEW OF PIER PILE CAP Scale: 1/2" = 1'-0"



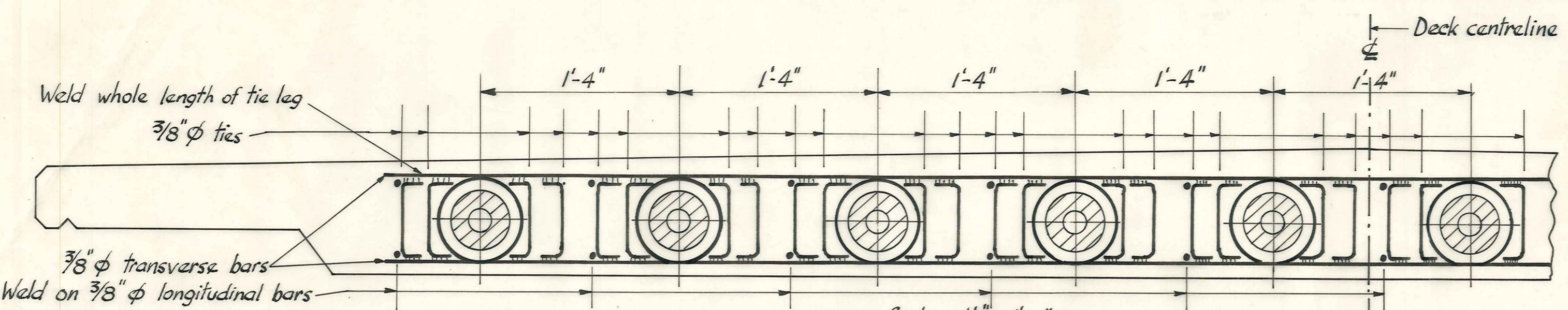
SECTION D-D

SECTION C-C

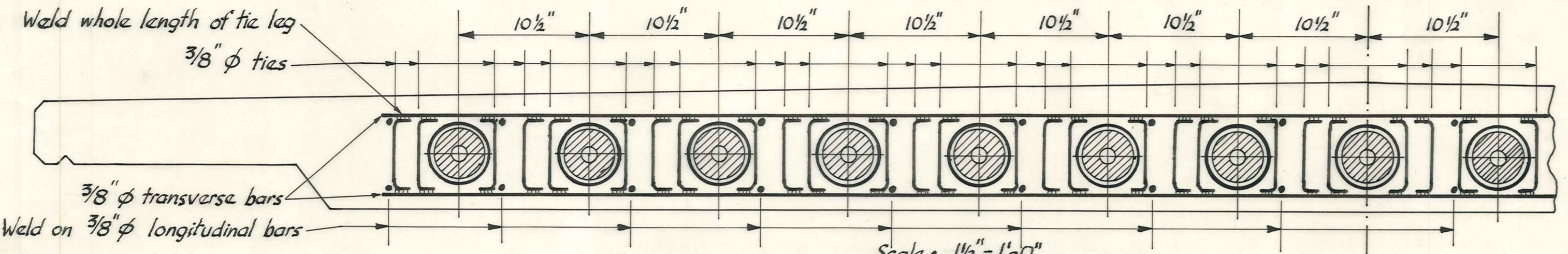


ELEVATION SHOWING REINFORCING STEEL AND DIMENSIONS FOR BOTH PIERS Scale: 1/2" = 1'-0"

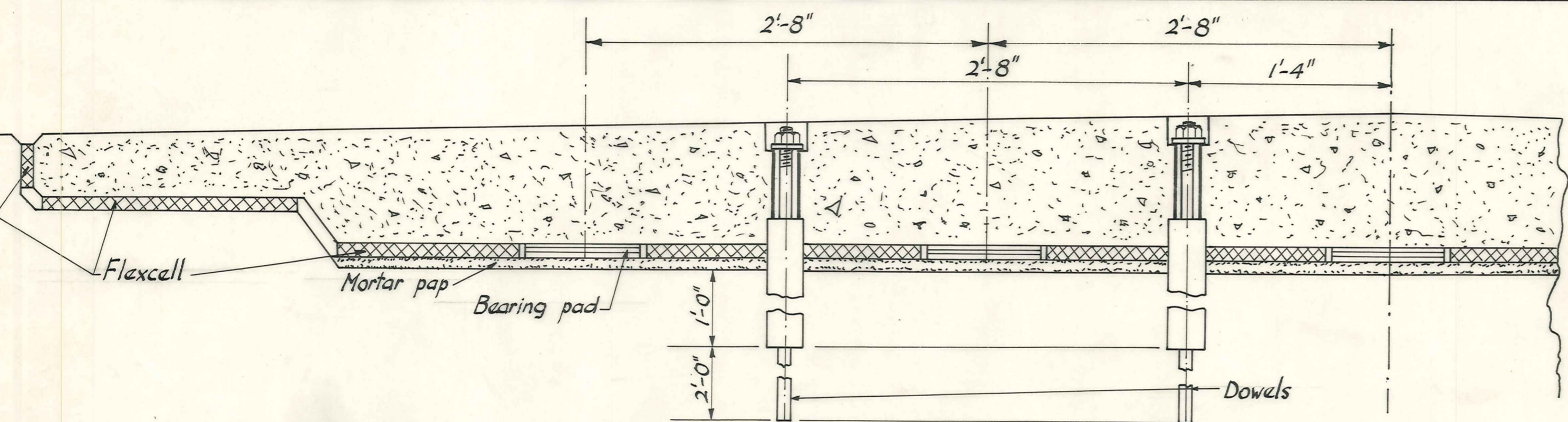
AMENDMENTS					NAME	DATE
No.	By	Date	Description	Apprd.		
					H.A.W. Barr	Sept '65



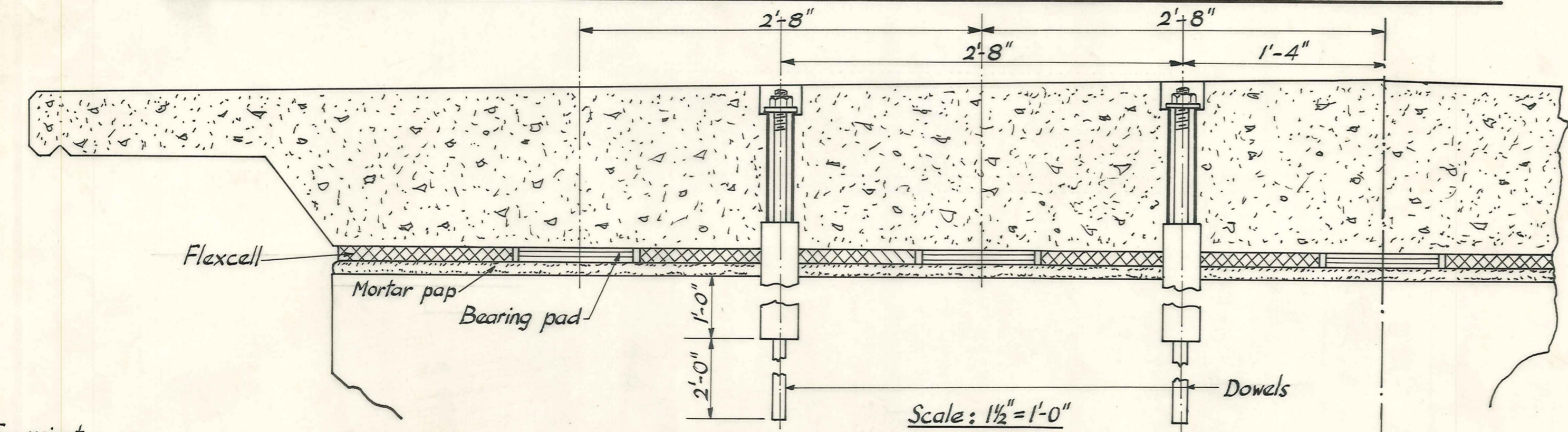
CROSS-SECTION THROUGH DECK SHOWING REINFORCING AROUND BBRV CABLE ANCHORAGES
Scale: 1/2" = 1'-0"



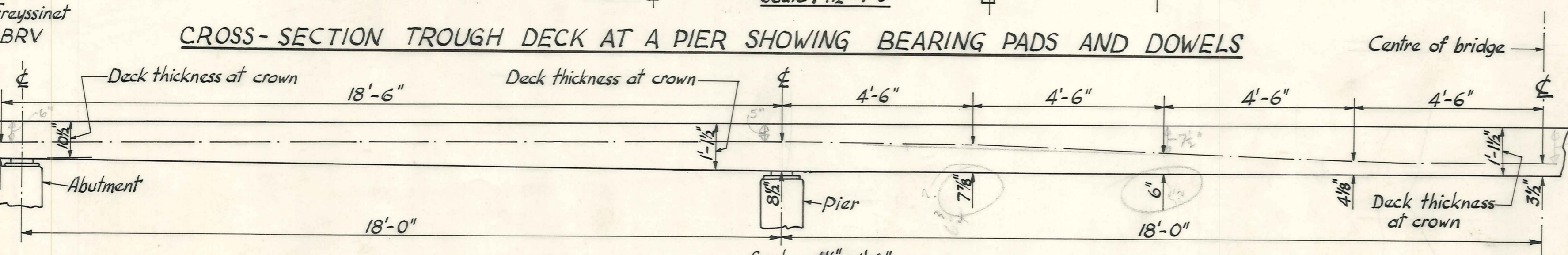
CROSS-SECTION THROUGH DECK SHOWING REINFORCING AROUND FREYSSINET CABLE ANCHORAGES
Scale: 1/2" = 1'-0"



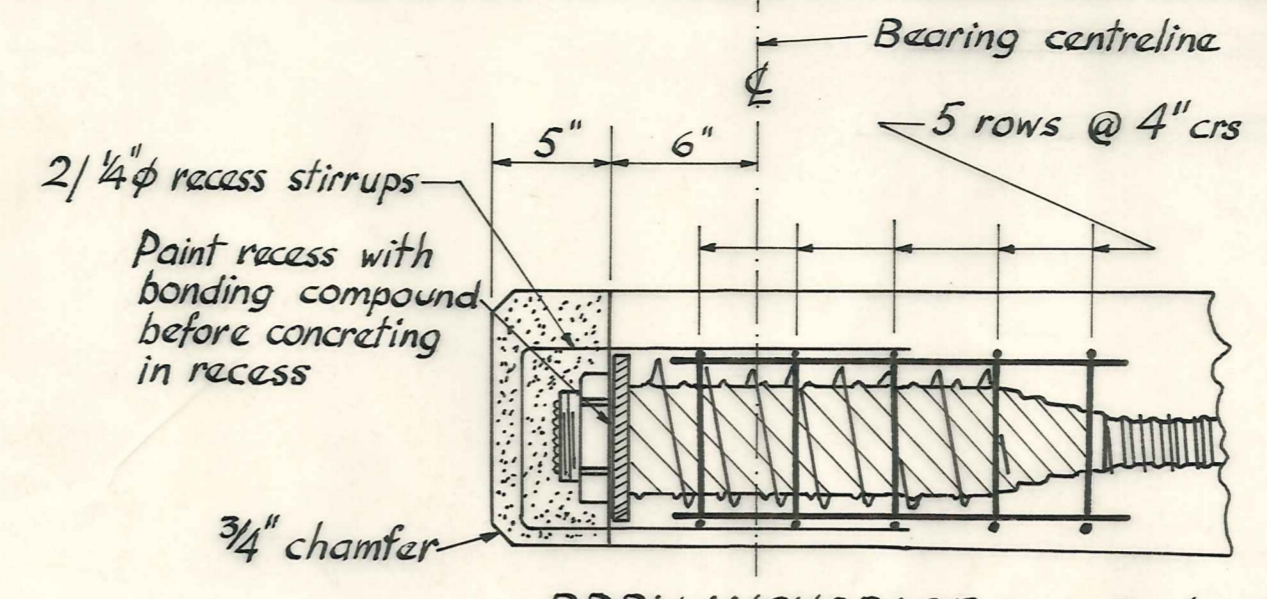
CROSS-SECTION THROUGH DECK AT ABUTMENT SHOWING BEARING PADS AND DOWELS
Scale: 1/2" = 1'-0"



CROSS-SECTION THROUGH DECK AT A PIER SHOWING BEARING PADS AND DOWELS
Scale: 1/2" = 1'-0"

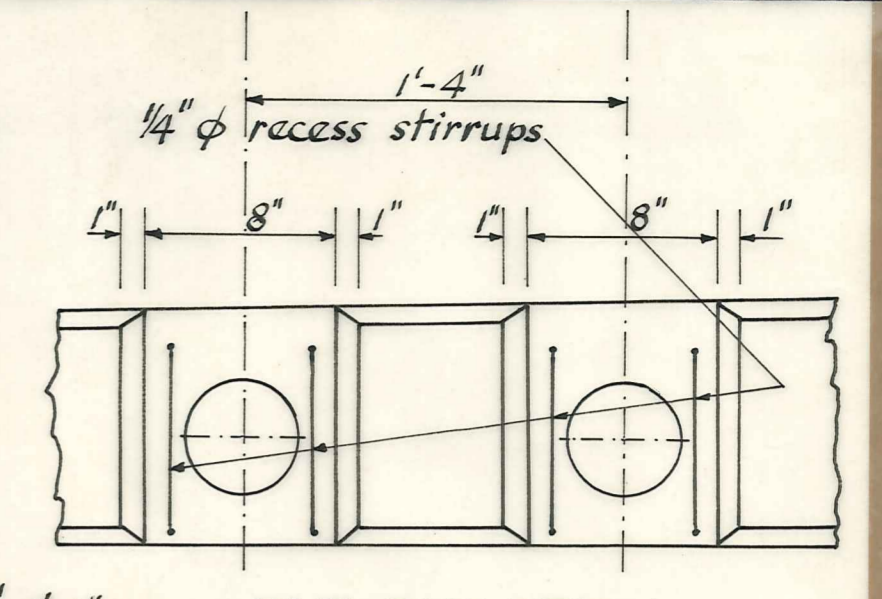


ELEVATION SHOWING PROFILE OF CABLES
Scale: 1/2" = 1'-0"

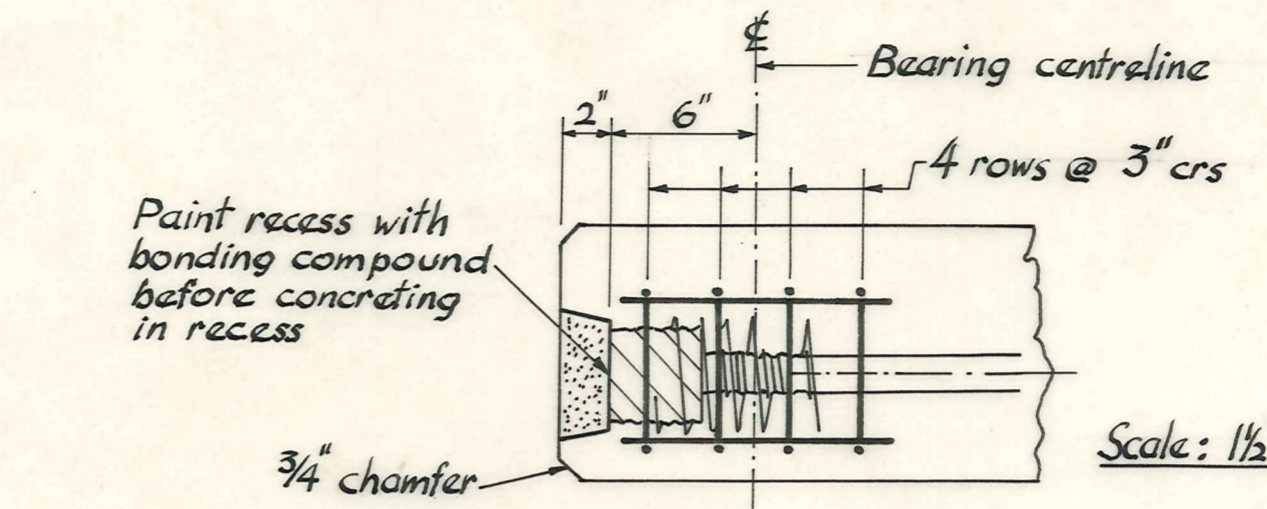


BBRV ANCHORAGE

Scale: 1 1/2" = 1'-0"

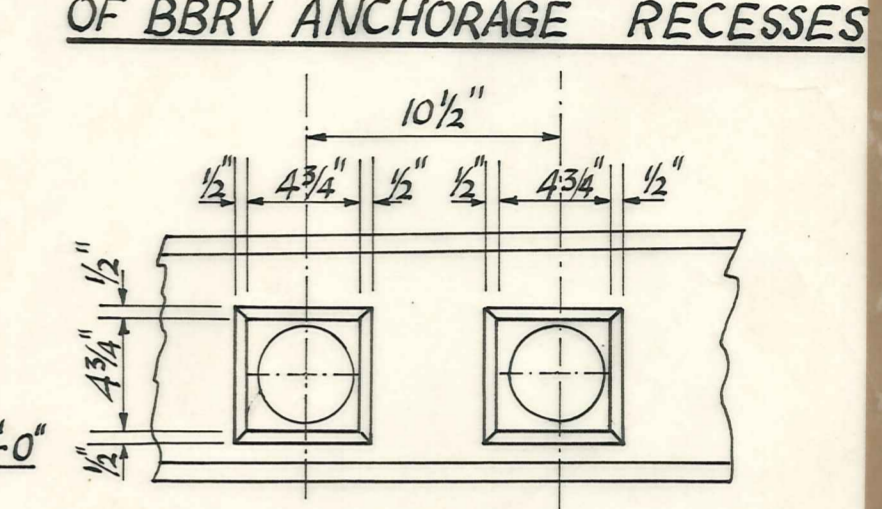


END ELEVATION OF BBRV ANCHORAGE RECESSES

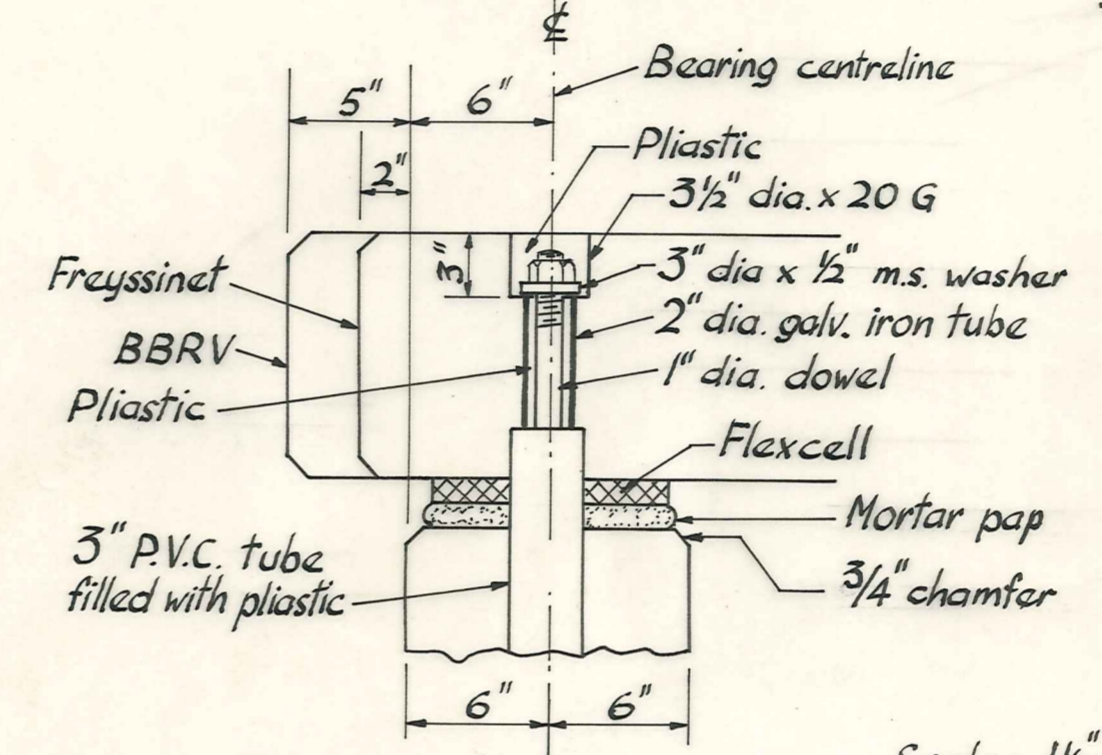


FREYSSINET ANCHORAGE

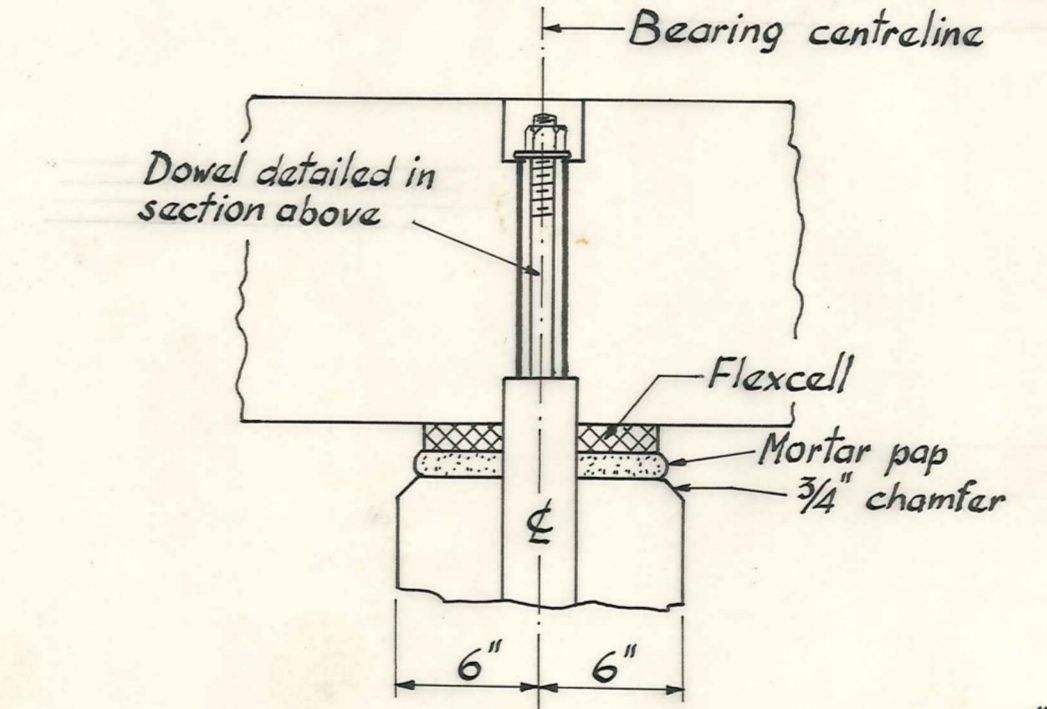
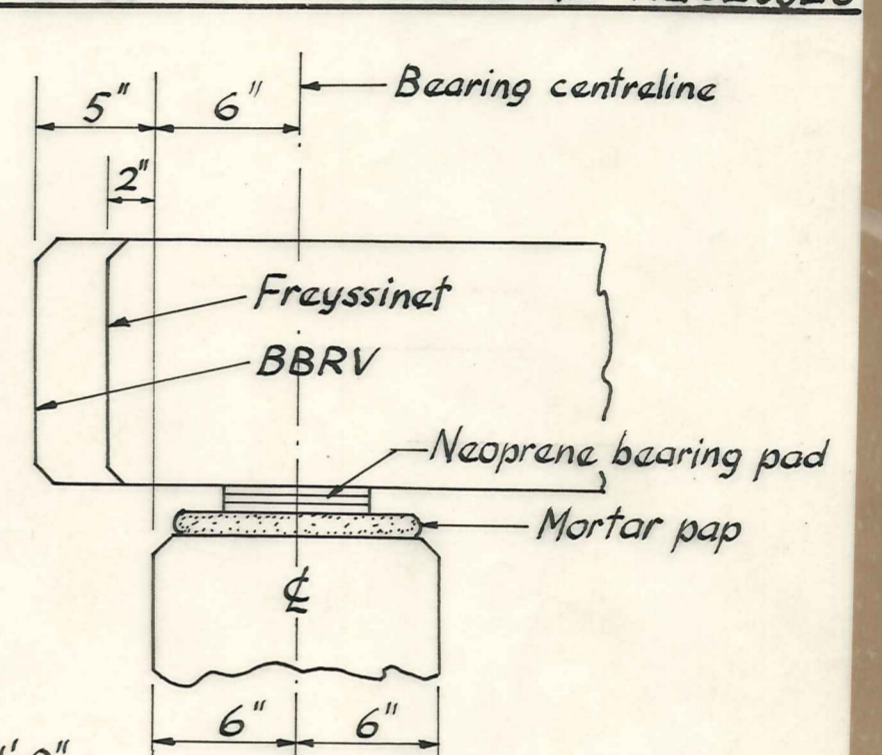
Scale: 1 1/2" = 1'-0"



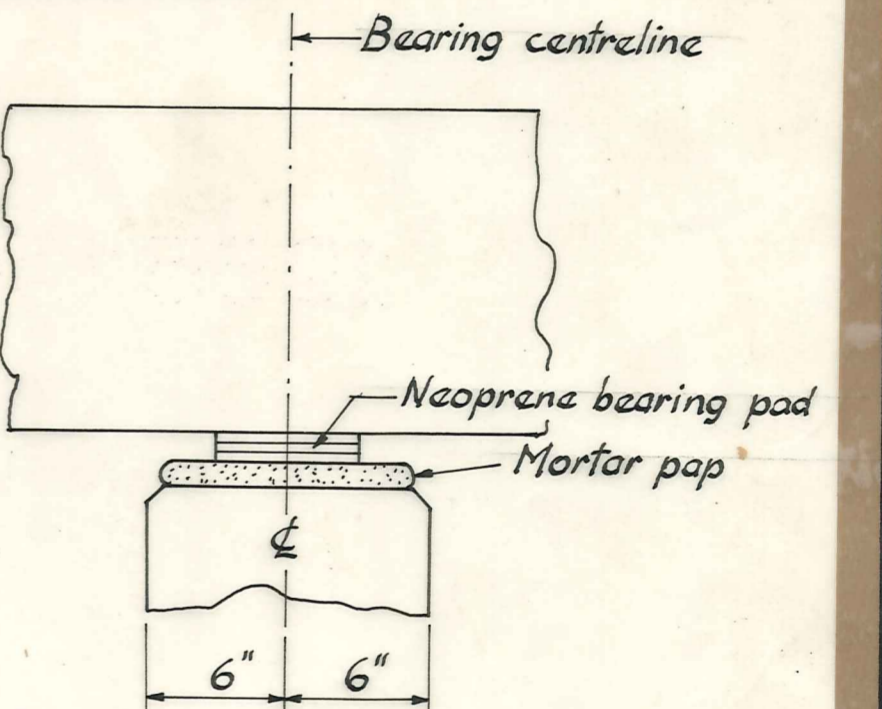
END ELEVATION OF FREYSSINET ANCHORAGE RECESSES



CROSS-SECTIONS AT RIGHT ANGLES TO ABUTMENT SHOWING DOWEL AND BEARING PAD
Scale: 1 1/2" = 1'-0"



CROSS-SECTIONS AT RIGHT ANGLES TO PIER SHOWING DOWEL AND BEARING PAD
Scale: 1 1/2" = 1'-0"



NOTE:
1.30 x 10⁶ lb initial prestress (total)
1.13 x 10⁶ lb prestress after 15% loss
BBRV Type "A" and Type "B" anchors alternately

AMENDMENTS					NAME	DATE
No.	By	Date	Description	Apprd.		
					H.A.W. Barr	Sept '65
					"	"
					N. Standish	"