

SITE PLAN.

Scale: 1 ch. to lin.

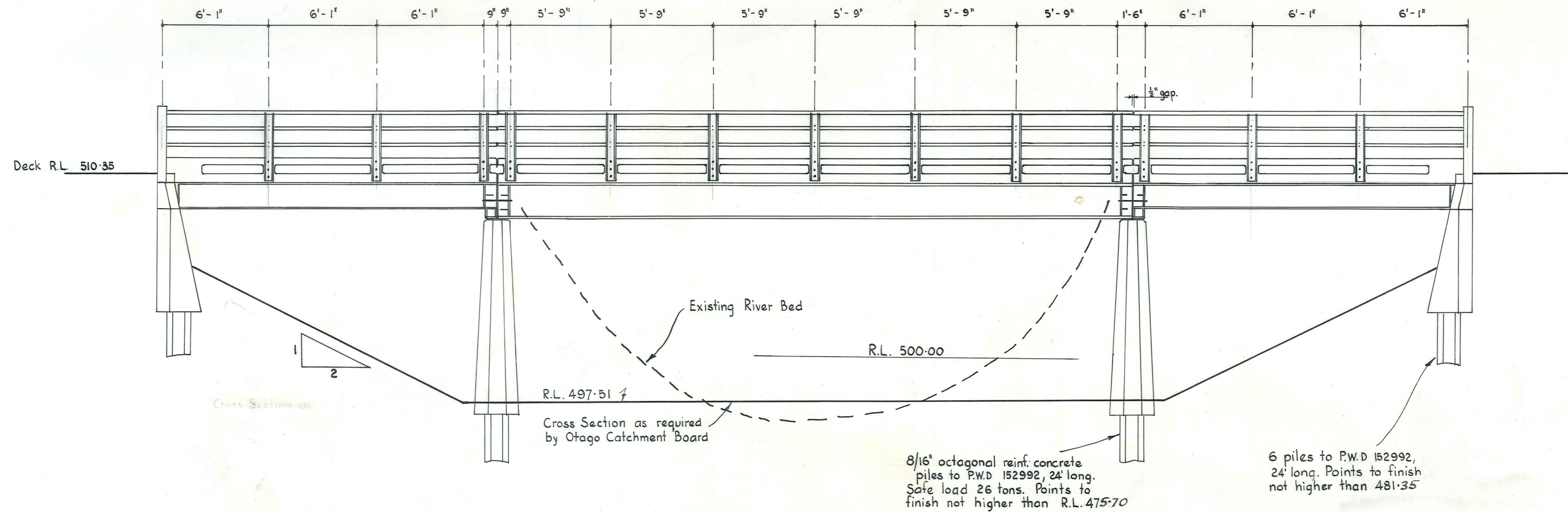
VINCENT COUNTY COUNCIL

FRASER RIVER BRIDGE

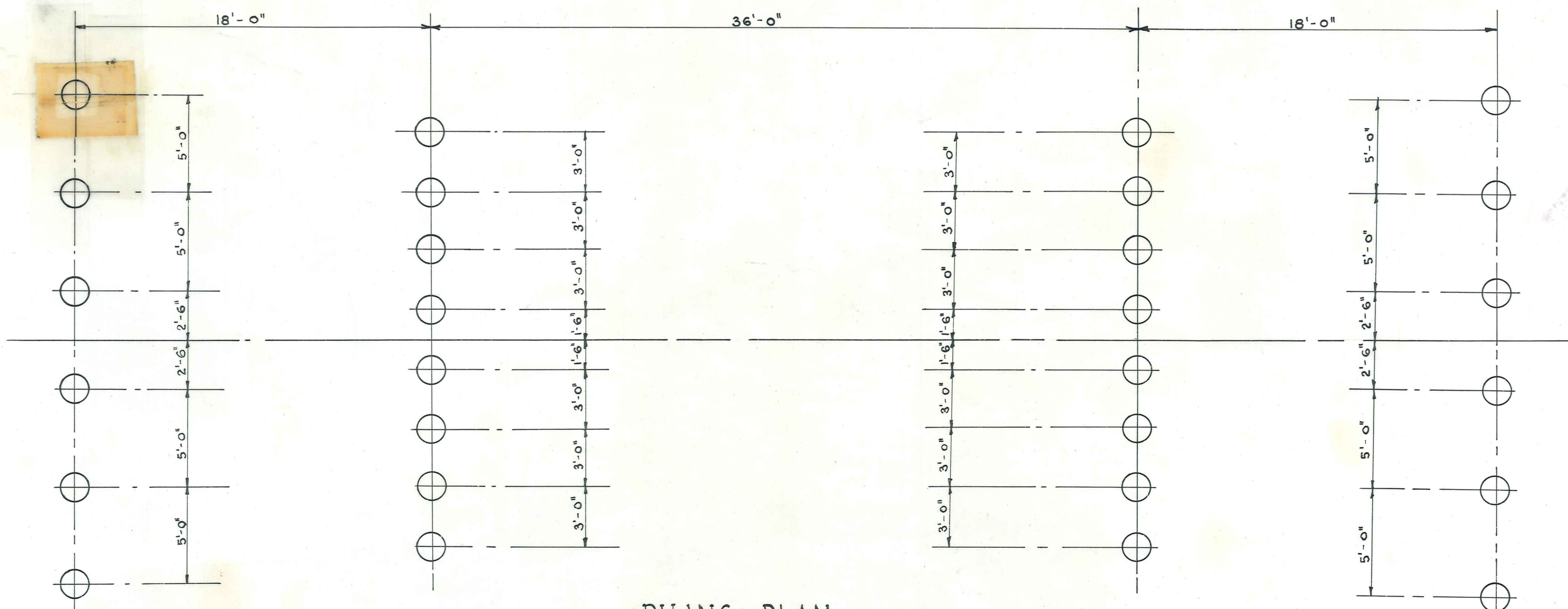
DUFFILL, WATTS & KING
CONSULTING CIVIL & STRUCTURAL ENGINEERS
DUNEDIN and INVERCARGILL

	NAME	DATE
SURVEYED BY	L. J. Wylde	
DRAWN	L. J. W.	
CALCULATIONS		
CHECKED	L. J. W.	
TRACED		
APPROVED	<i>[Signature]</i>	Aug 68

JOB No.
4437/1
F.B.K. FILE No. 4/42

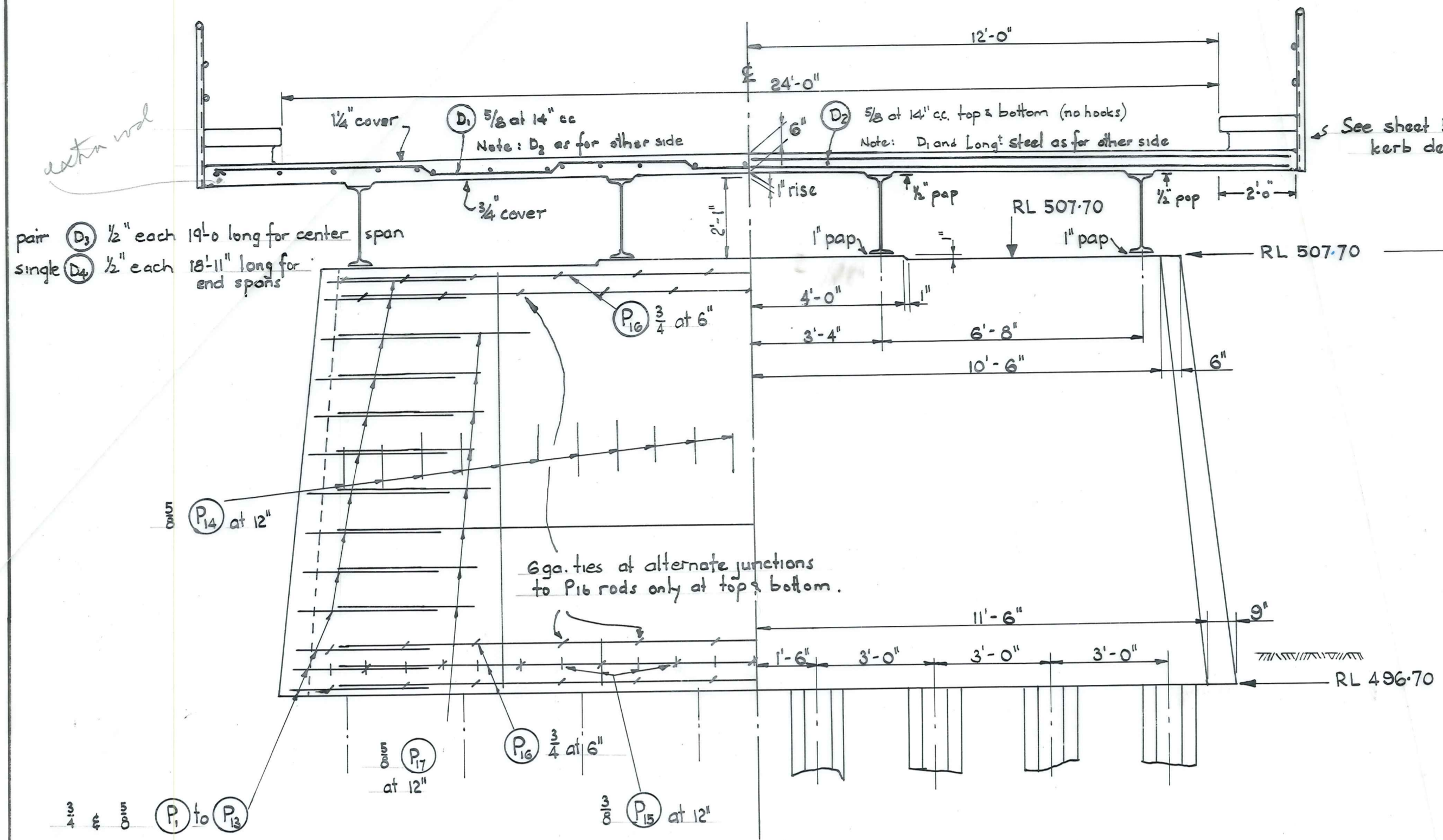


SIDE VIEW.
Scale $\frac{1}{4}'' = 1'-0''$



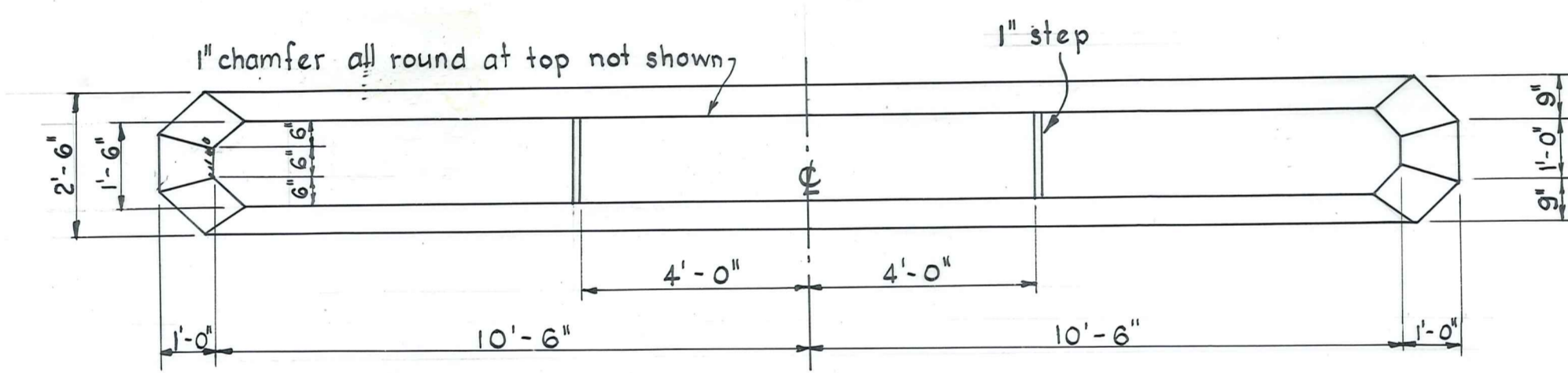
PILING PLAN
Scale $\frac{1}{4}'' = 1'-0''$

Deck ϕ at Abutments RL. 510.35
 Deck ϕ at Piers RL. 510.45

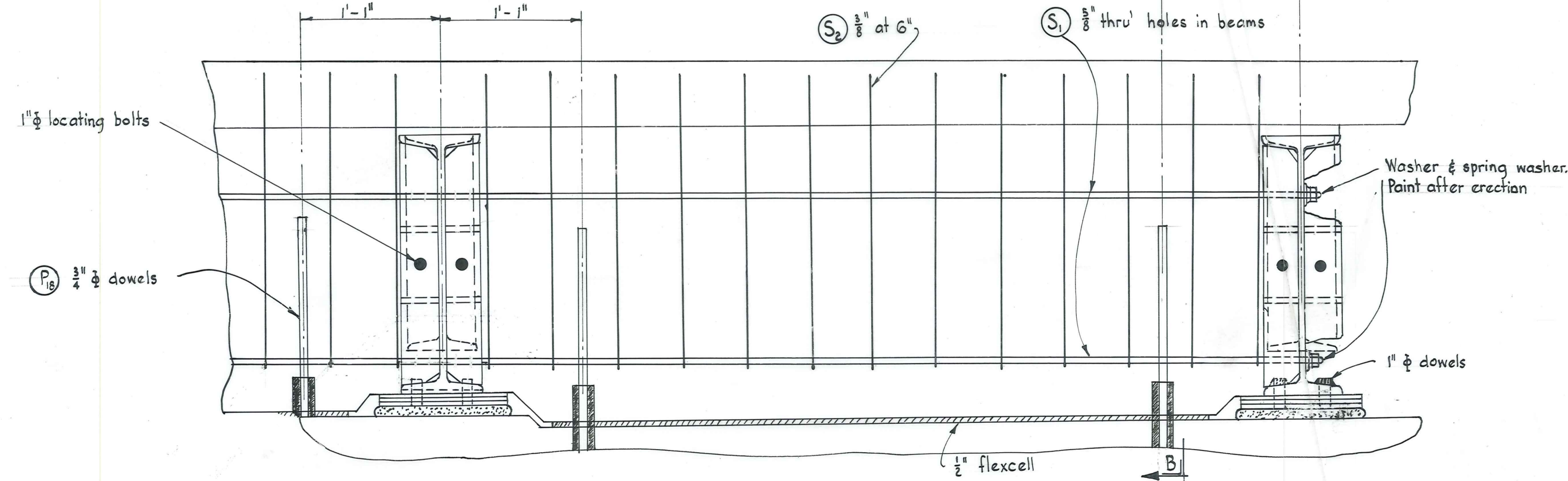


ELEVATION at PIER

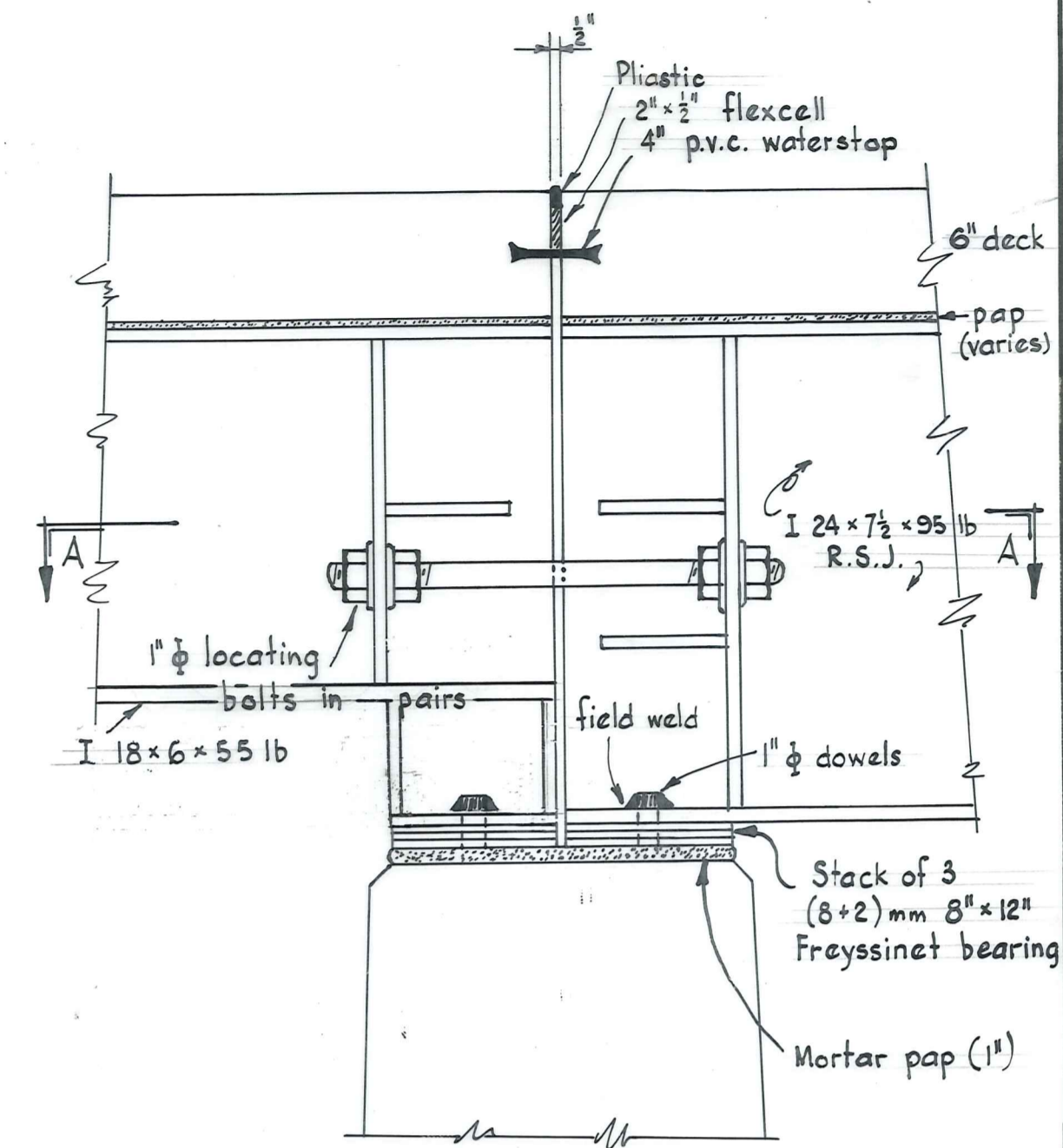
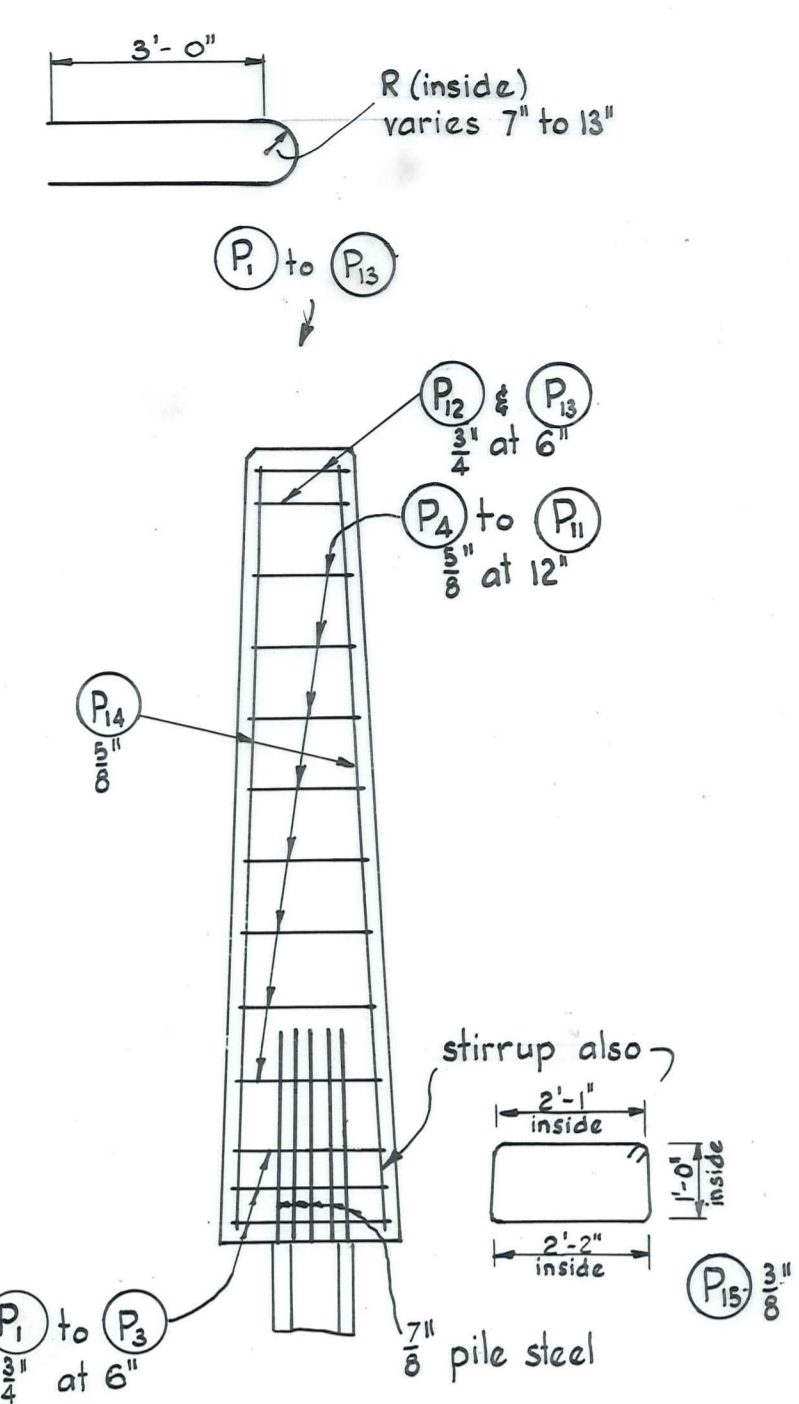
END ELEVATIONS



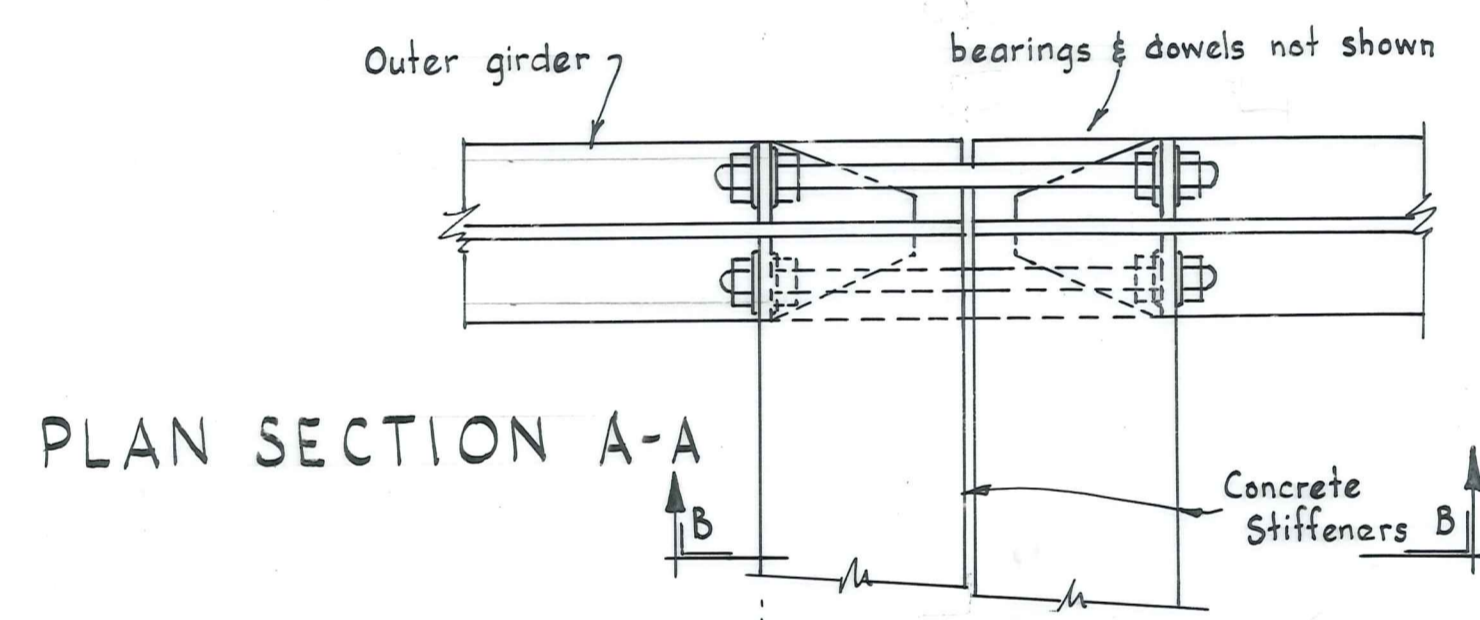
PLAN on PIER



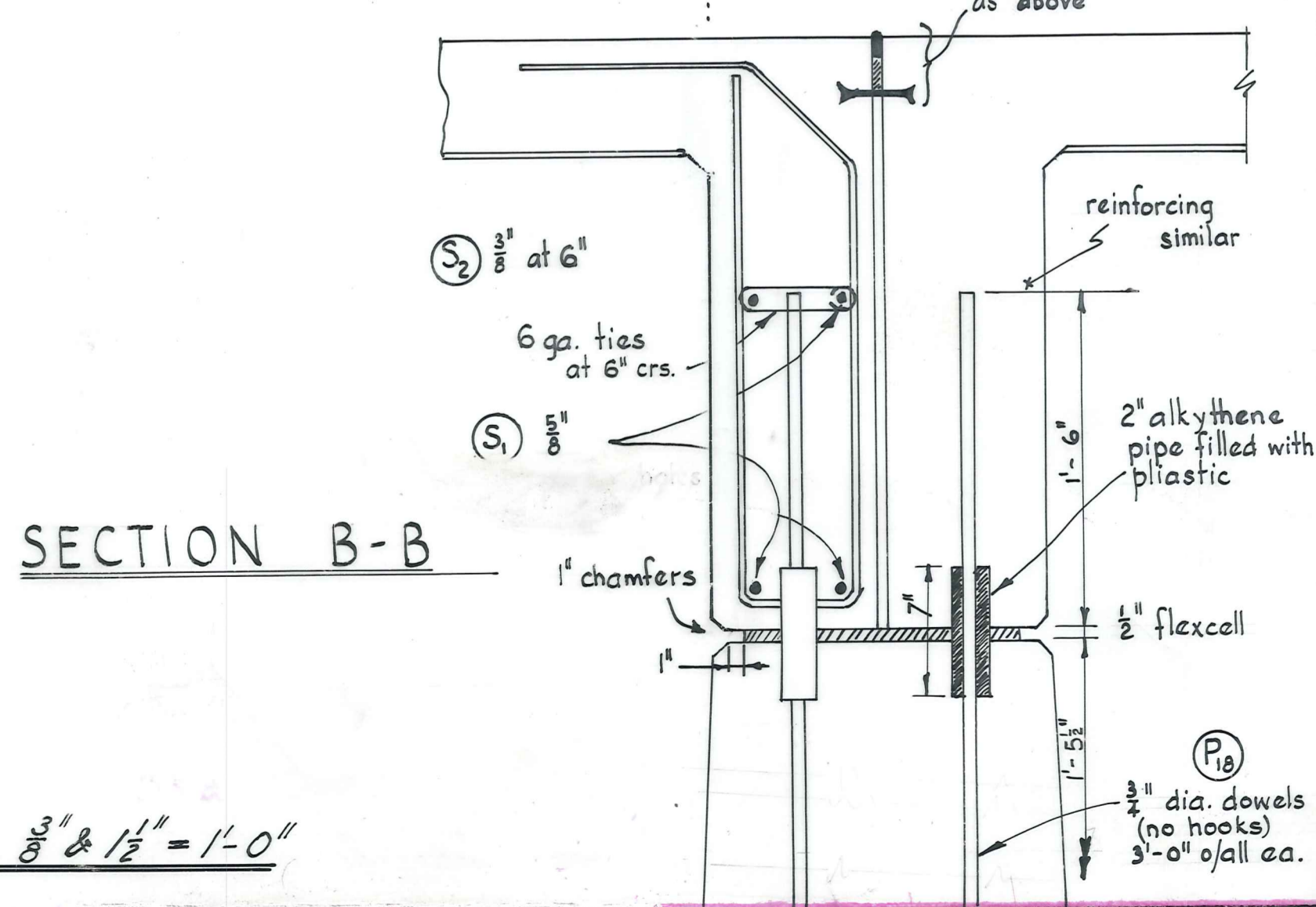
PART ELEVATION of PIER STIFFENER



STEELWORK at PIERS

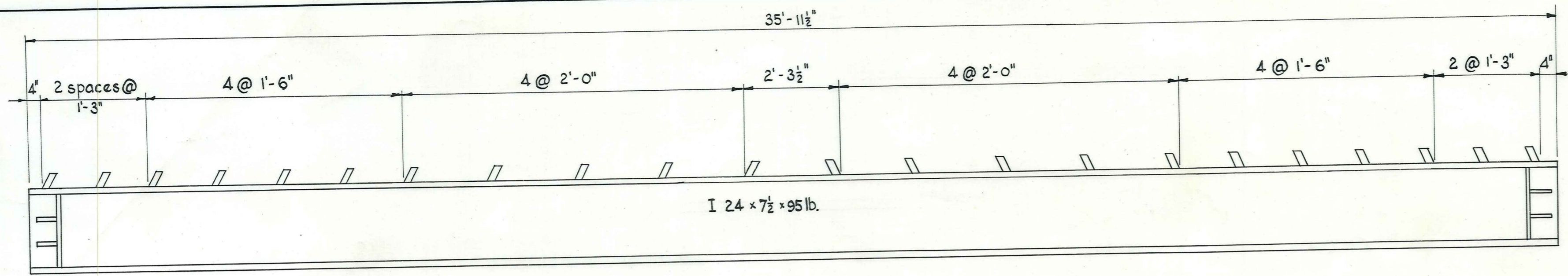


PLAN SECTION A-A

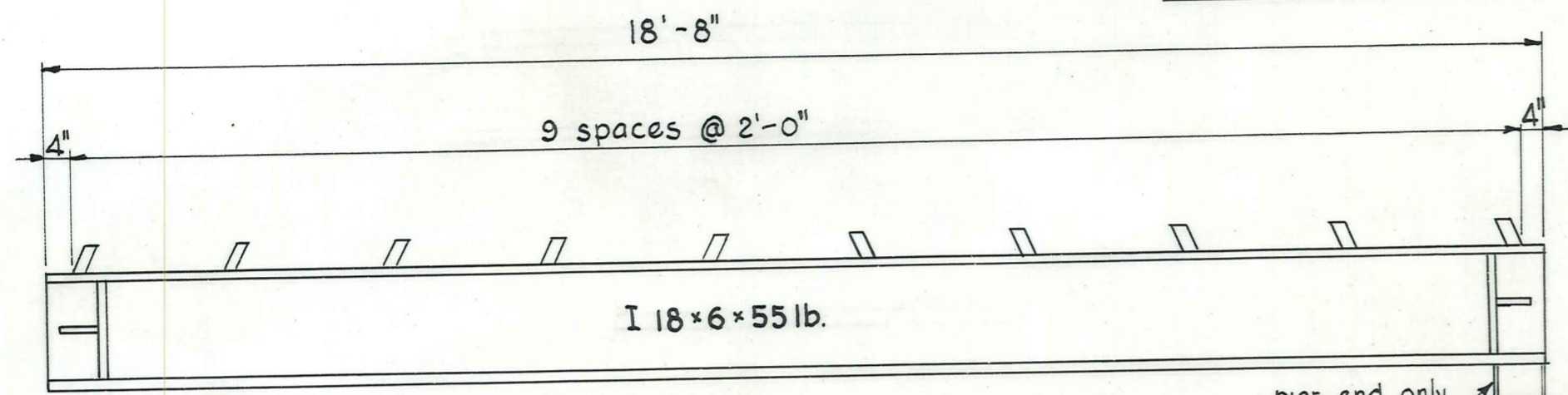


SECTION B-B

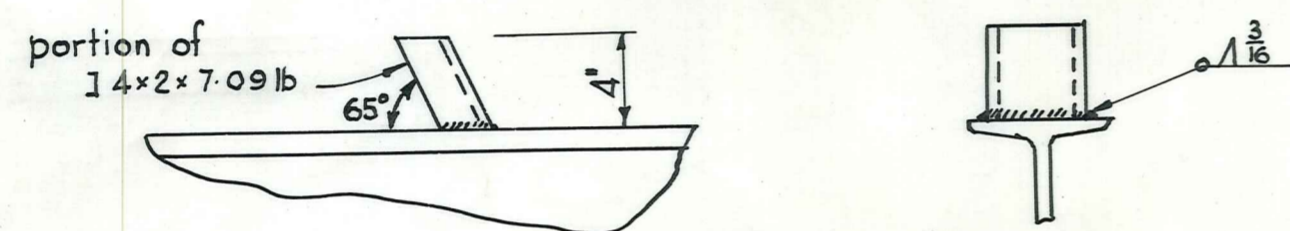
Scales: $\frac{3}{8}$ " & $1\frac{1}{2}$ " = 1'-0"



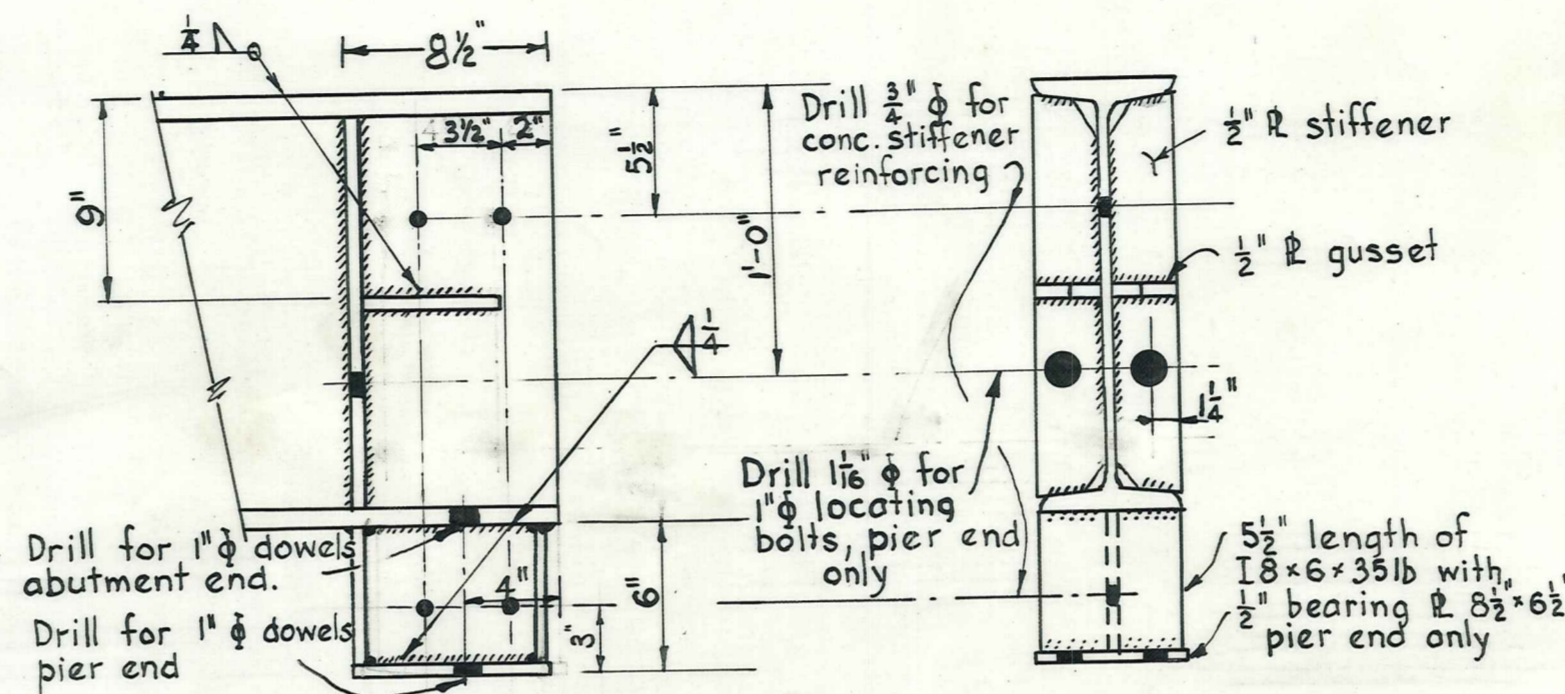
ELEVATION of LONGER BEAMS 4 OFF THIS.



ELEVATION of SHORTER BEAMS 8 off thus

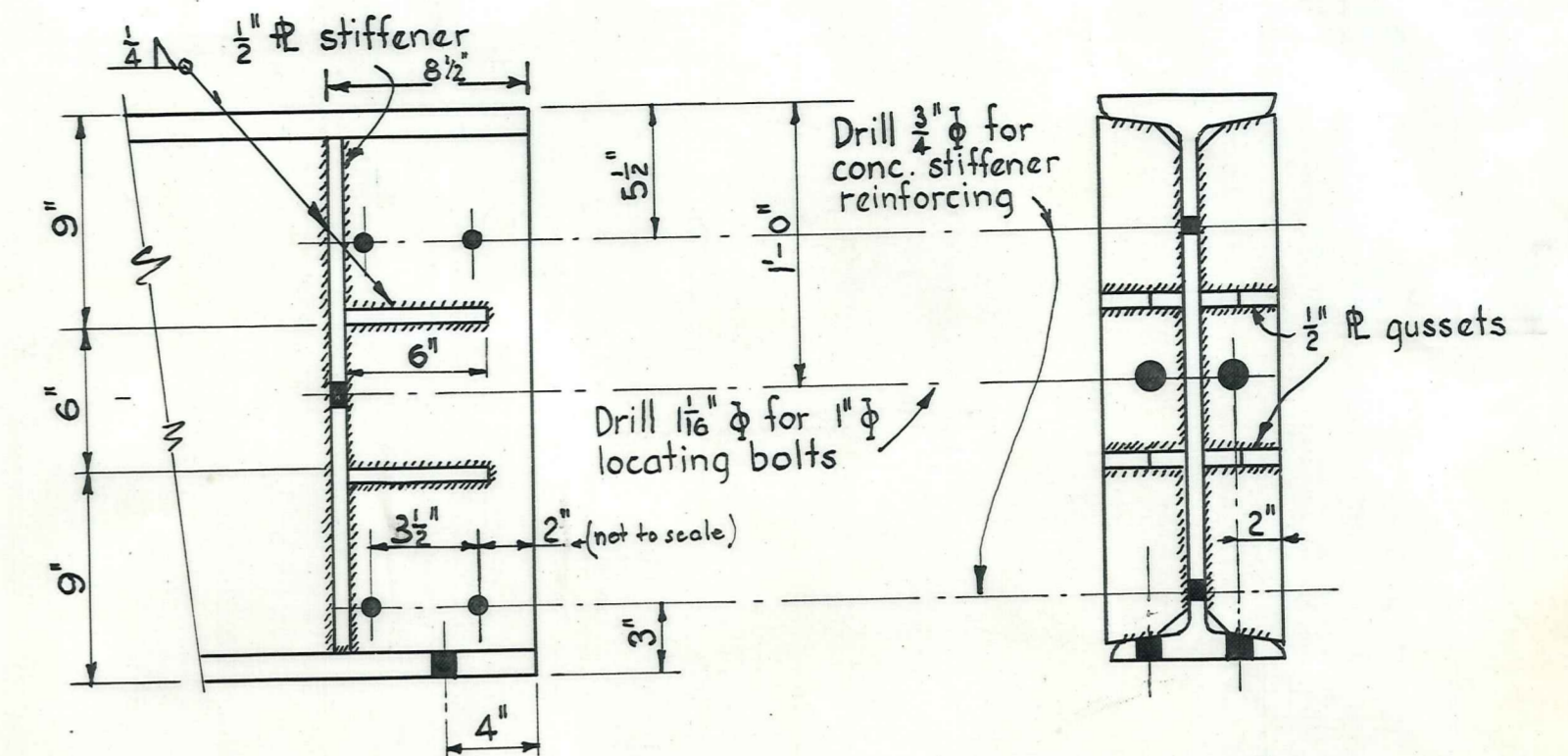


SHEAR CONNECTOR DETAIL - BOTH BEAMS.



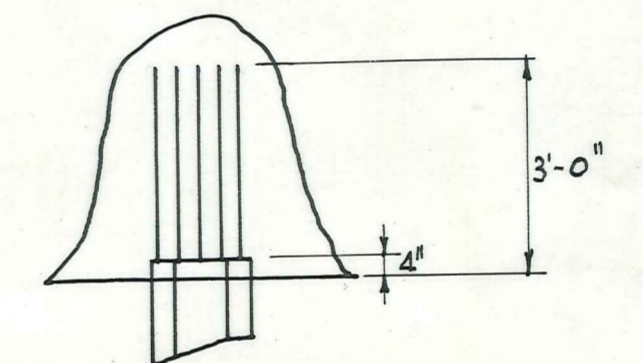
END of BEAM DETAIL

I 18 x 6 x 55 lb.

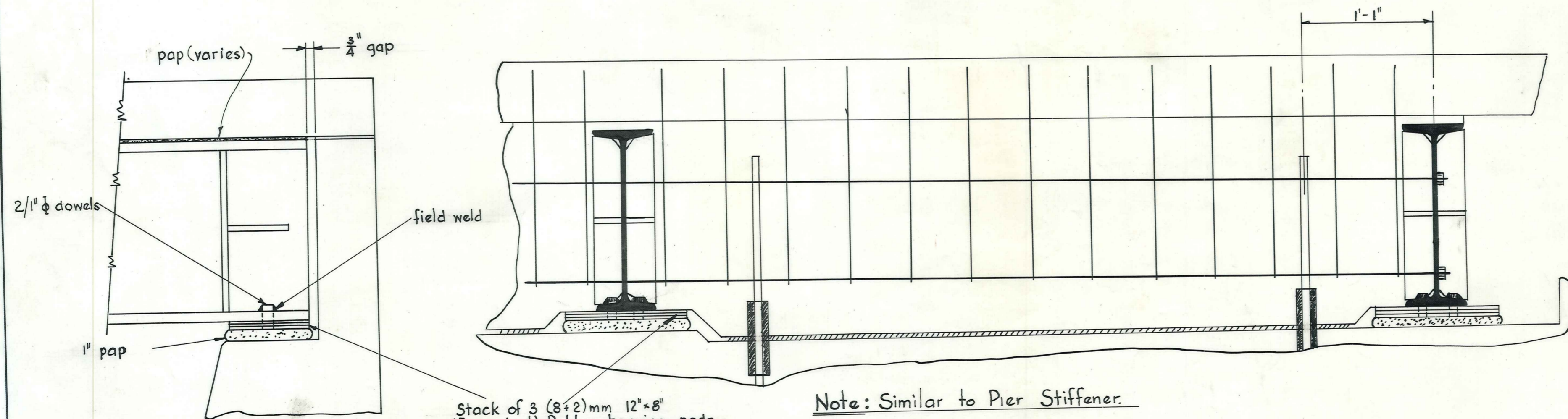


END of BEAM DETAIL

I 24 x 7 1/2 x 95 lb.

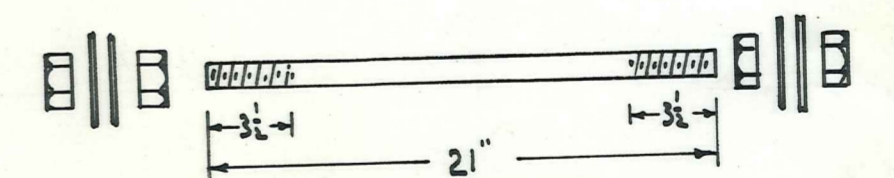


DETAIL of PILE STRIPPING. (N.T.S.)



ELEVATION of ABUTMENT STIFFENER.

STEELWORK of ABUTMENTS

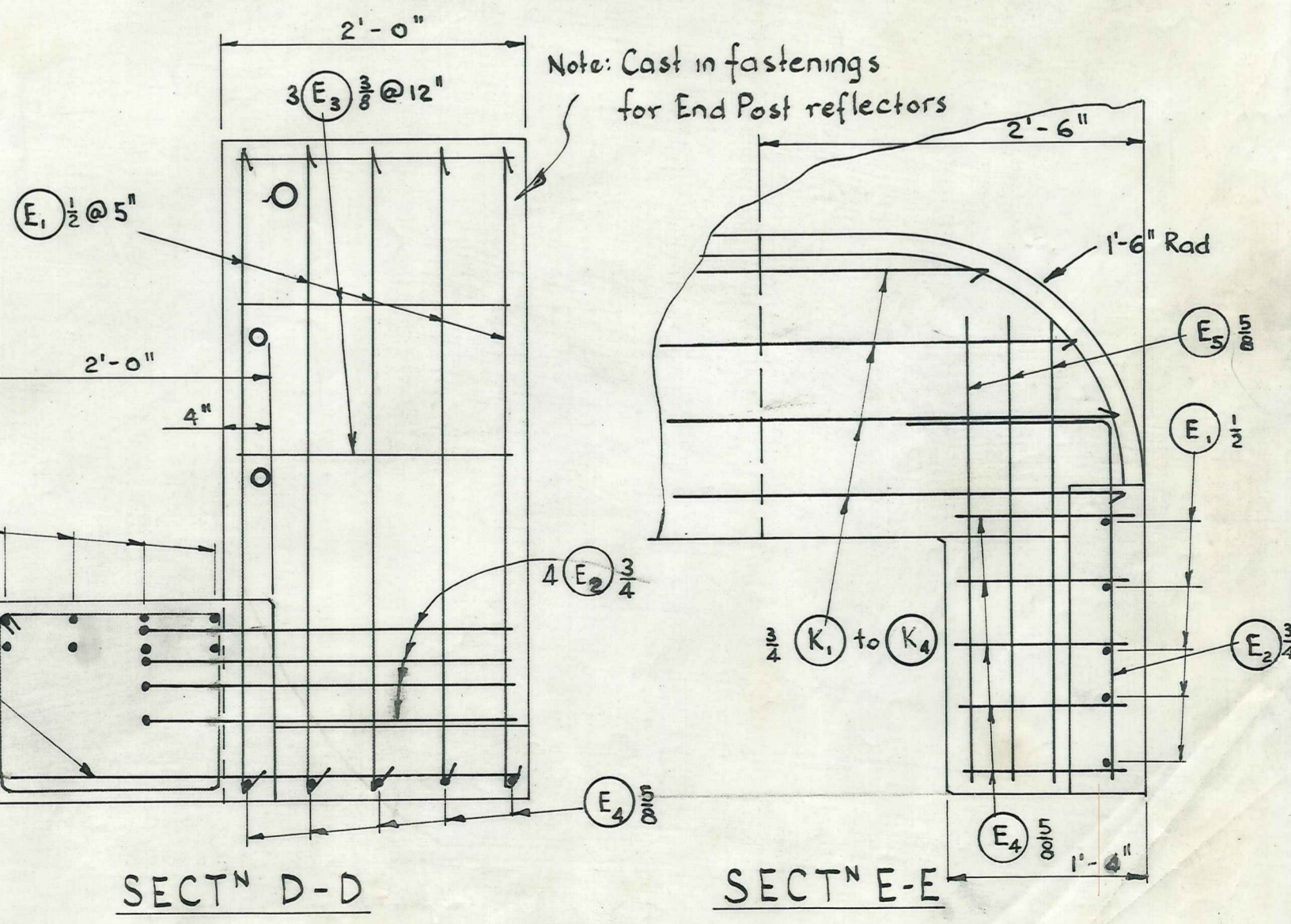
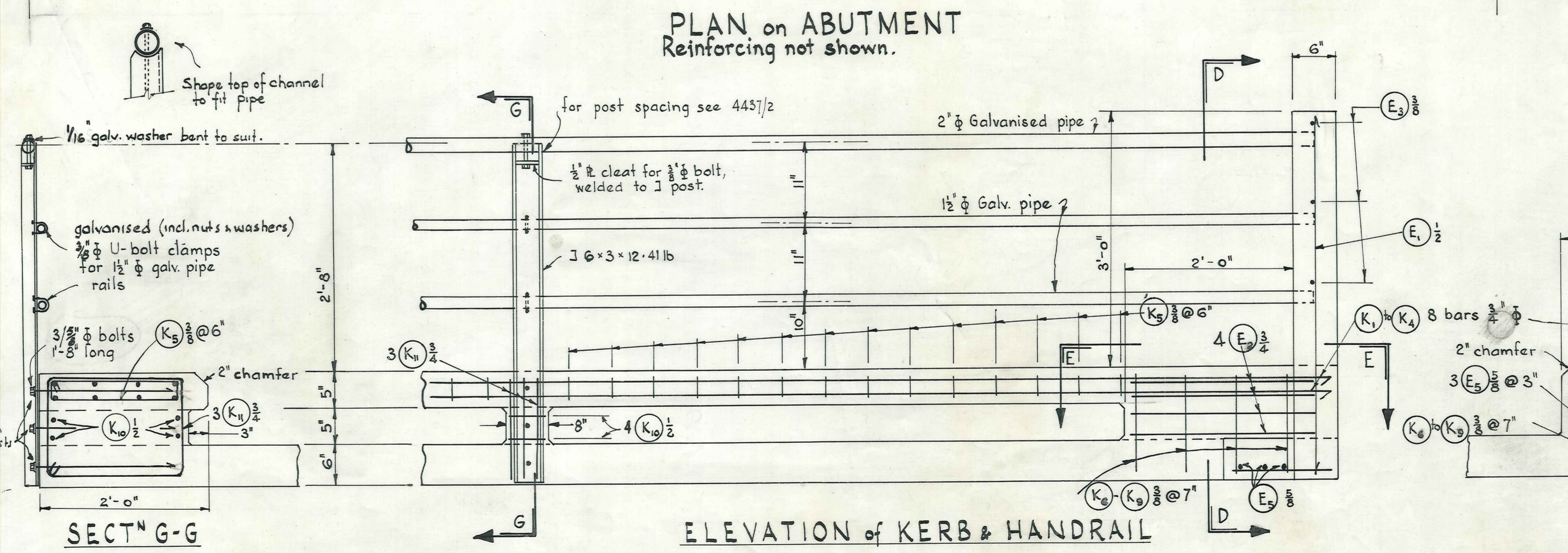
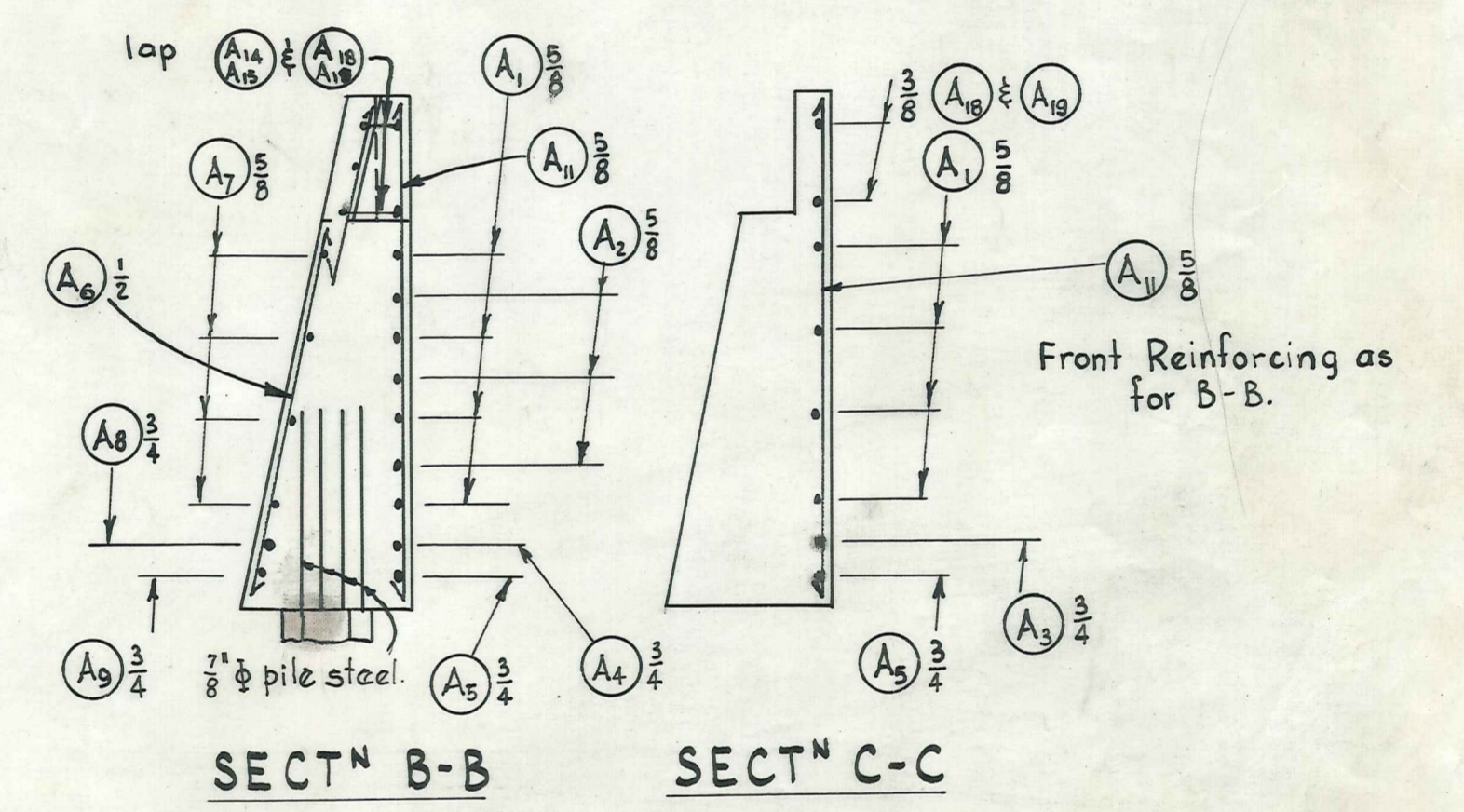
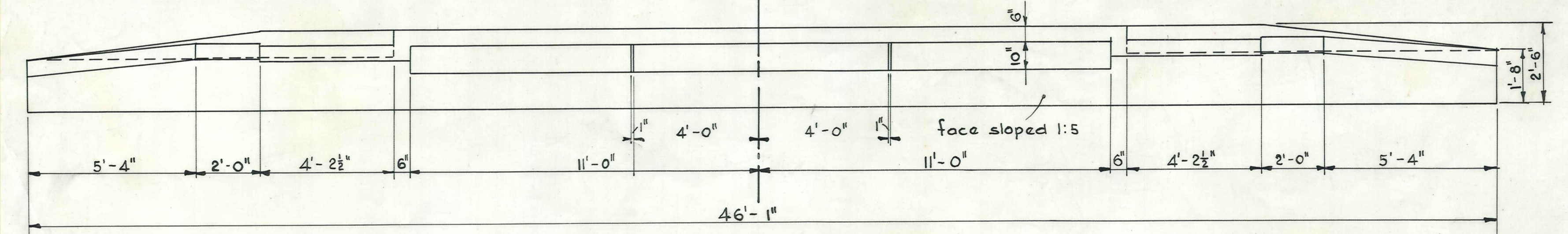
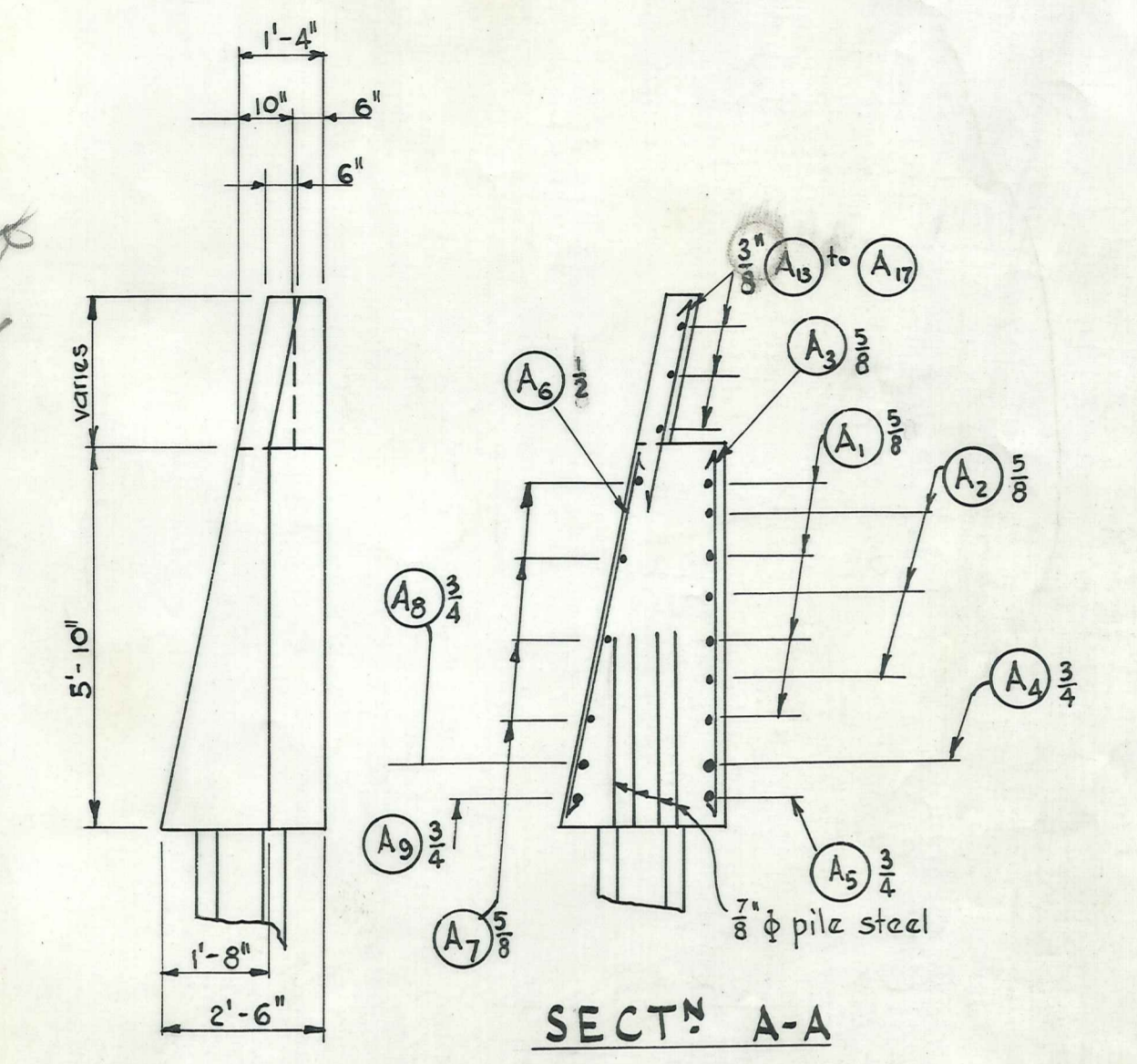
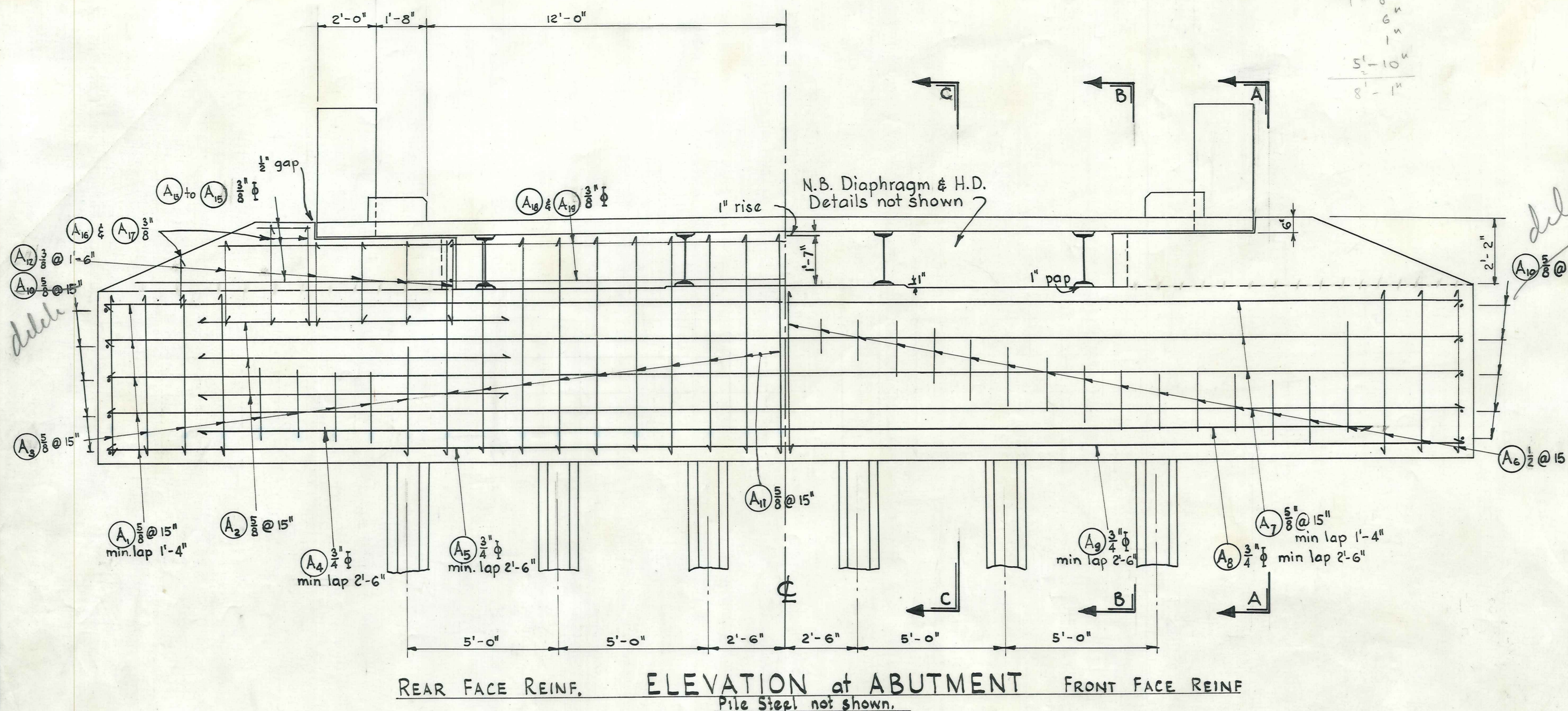


TIE BOLT DETAIL

16 thus

Scales: 1/2" = 1' & 1/2" to 1"

1'-0"
5'-10"
8'-1"



VINCENT COUNTY COUNCIL

FRASER RIVER BRIDGE
ABUTMENTS & KERB DETAILS
Scale $\frac{3}{8}$ " = 1'-0"

DUFFILL, WATTS & KING		NAME	DATE	JOB No.
CONSULTING CIVIL & STRUCTURAL ENGINEERS		DUNEDIN and INVERCARGILL		4437/5
SURVEYED BY	DRAWN BY	CHECKED BY	TRACED BY	APPROVED BY

