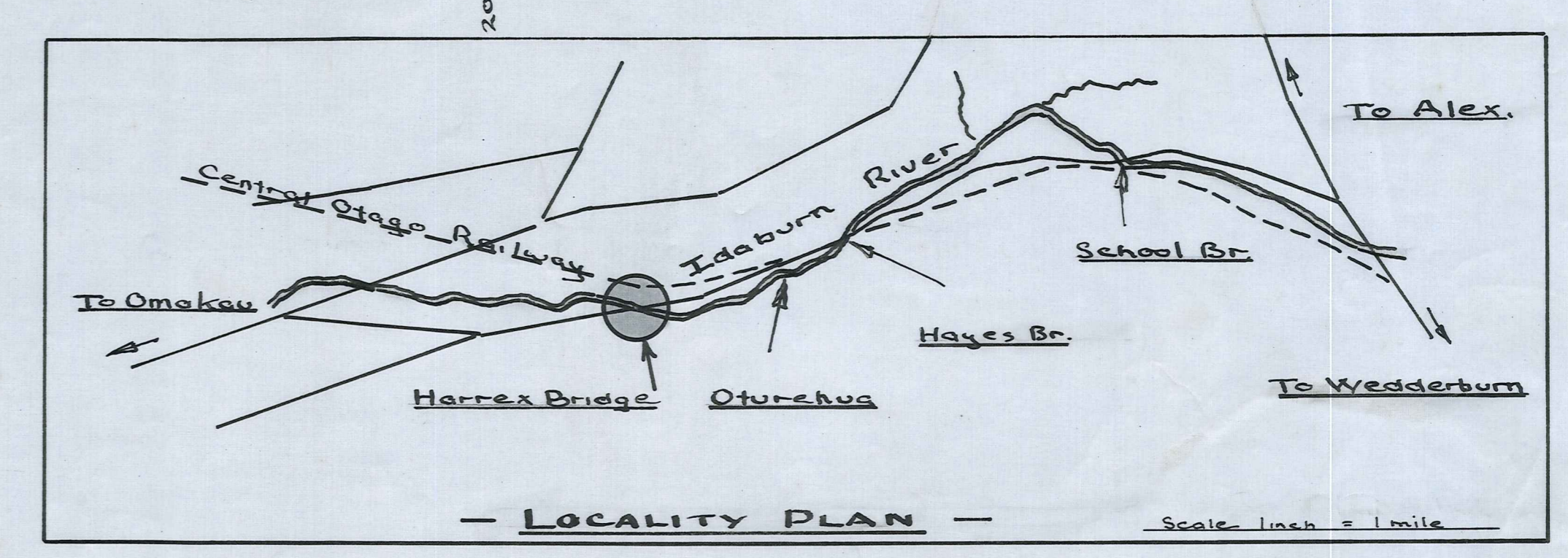


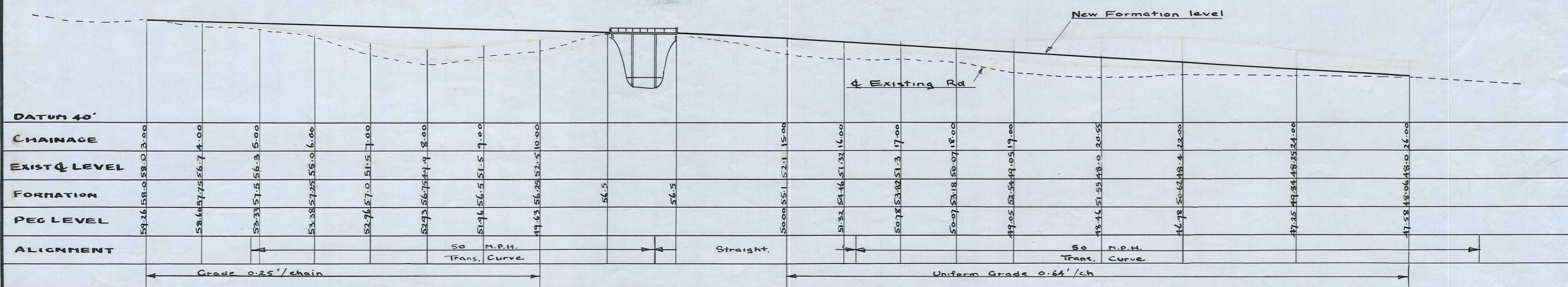
BRIDGE X-SECTION Scale 10' = 1"

$\Delta = 29\frac{1}{2}^\circ$ SV = 50 mph
 $R = 1076.69$ L = 553.26
 $AO = 562.07$ SE = 1.5'/ft
 $A.X. = 48.89$ EW = 1.5'

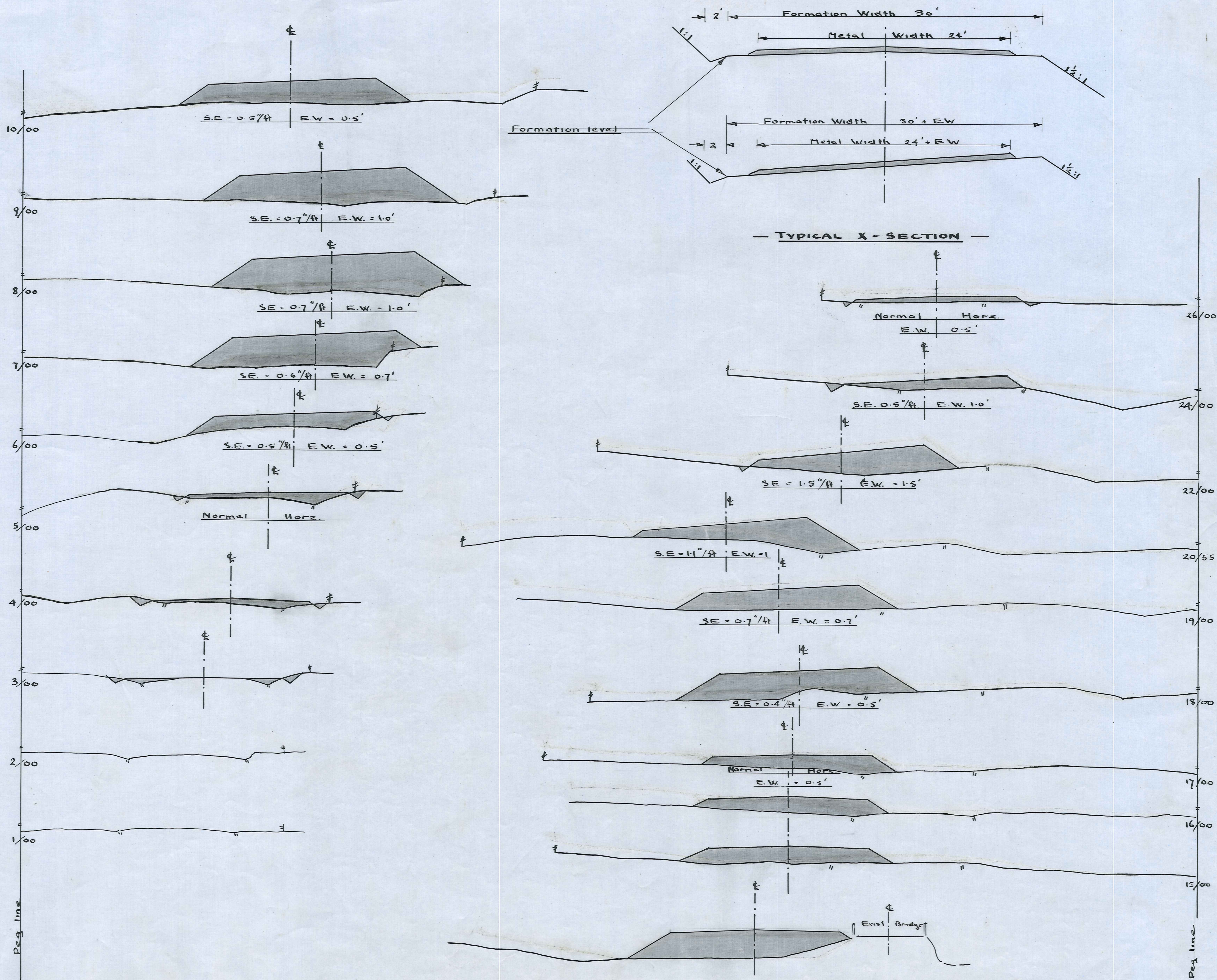
- PLAN - Scale 1ch = 1"



- LOCALITY PLAN - Scale 1 inch = 1 mile



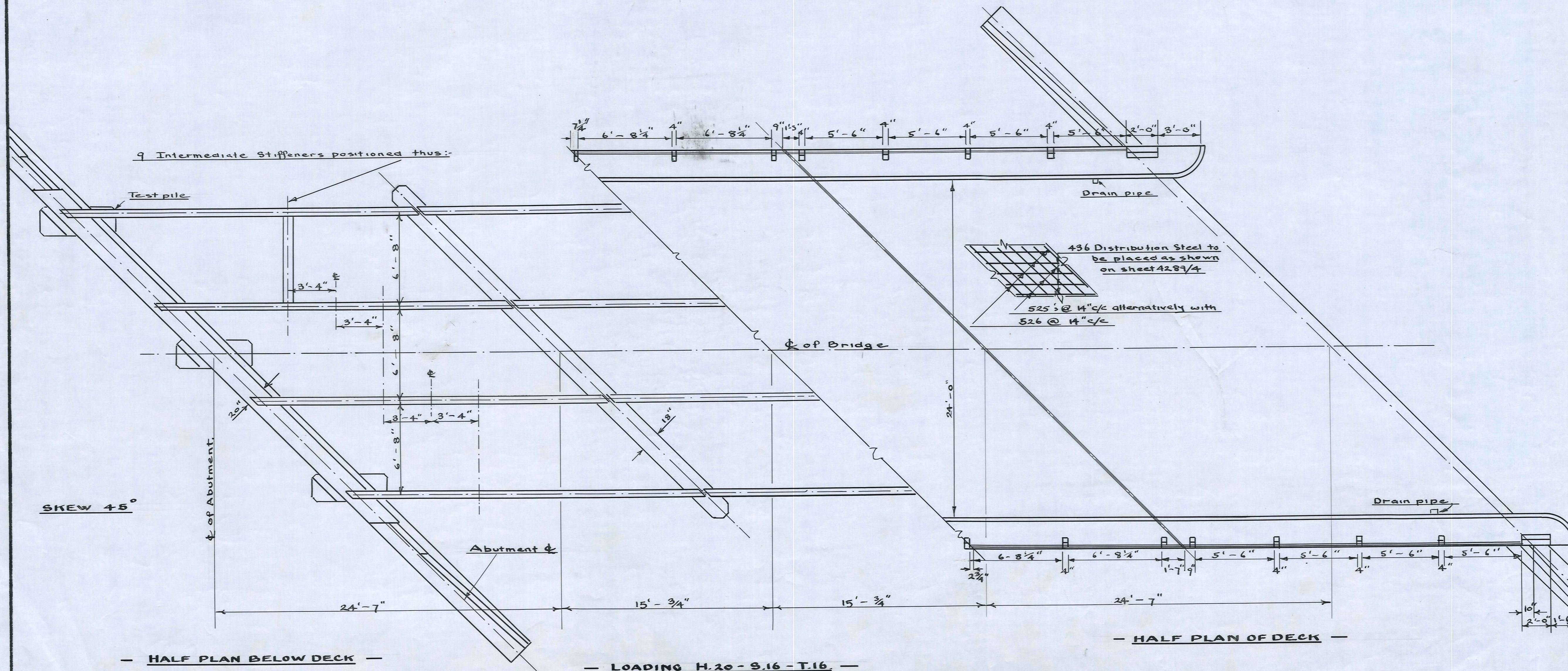
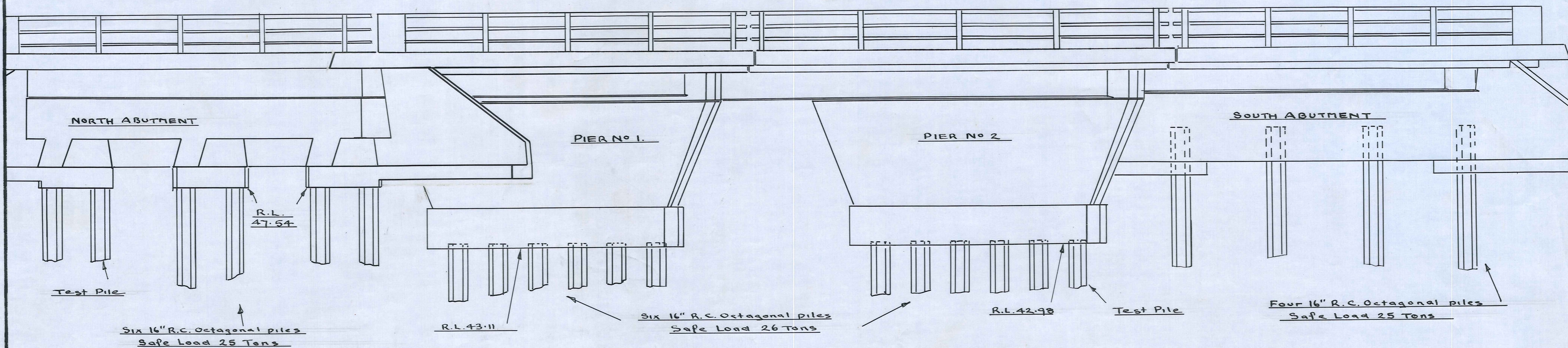
- LONGSECTION - Scales Horiz. 1ch = 1" Vert. 10' = 1"



X-Section at South end of Bridge
 NOTE: Formation Width at end of Bridge 32'

R.L. of edge of deck at North end
of Bridge = 56.00

R.L. of Deck at drain pipe = 55.67



MANIOTOTO COUNTY COUNCIL

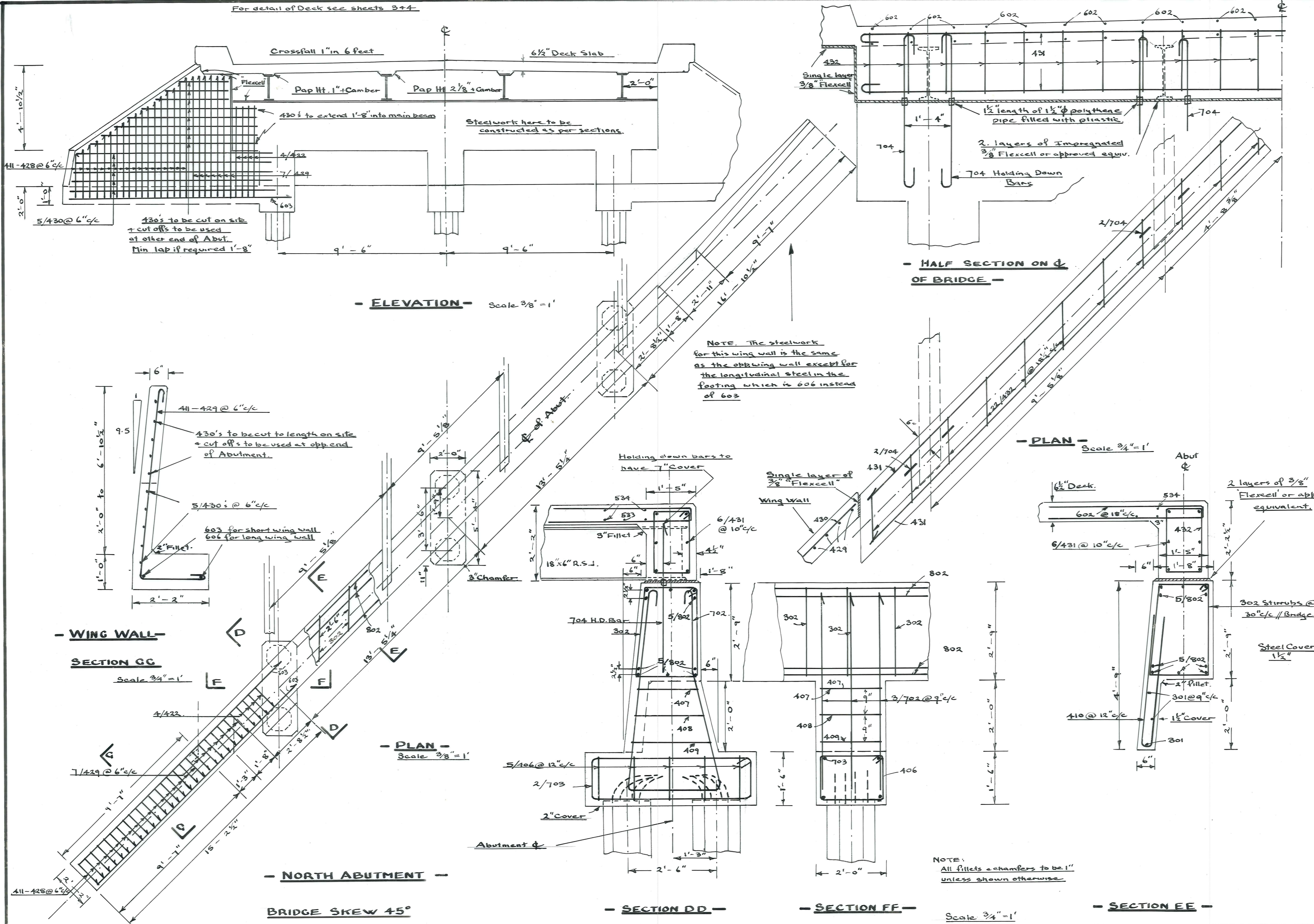
HARREX BRIDGE

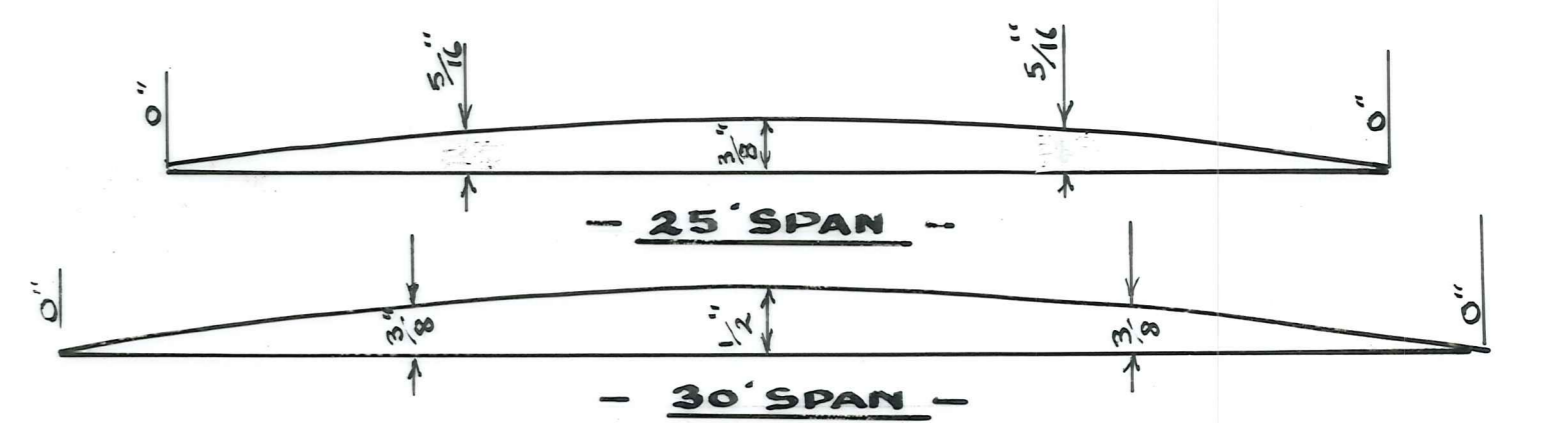
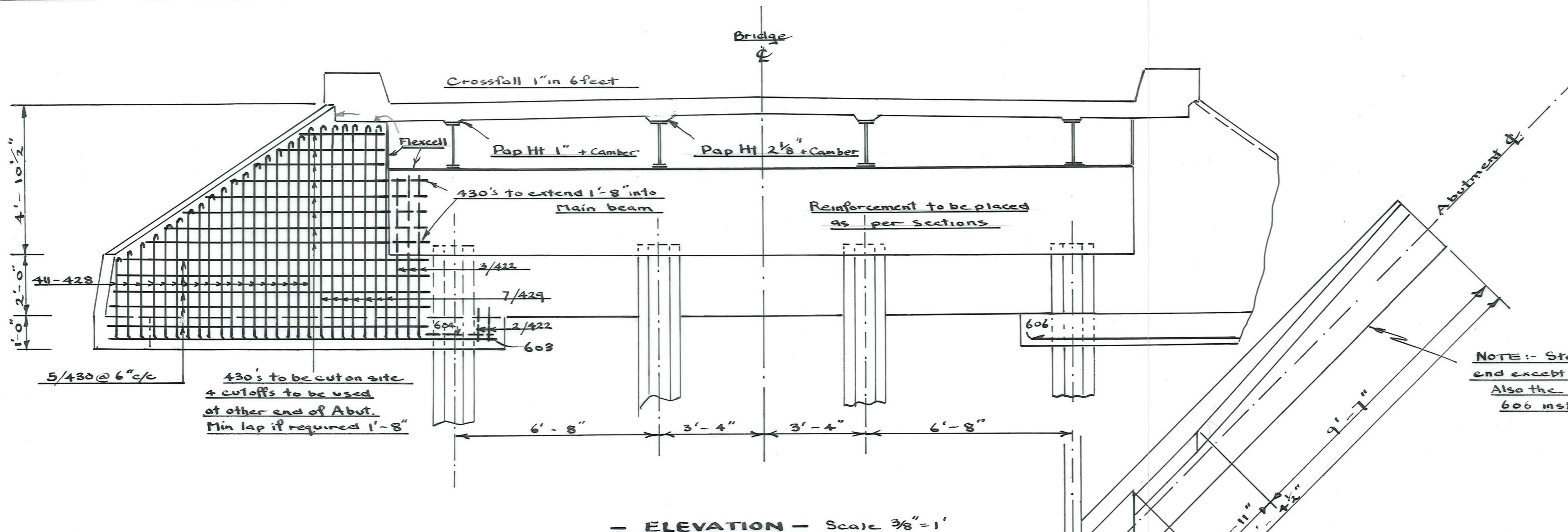
DUFFILL, WATTS & KING
CIVIL ENGINEERS AND SURVEYORS
DUNEDIN and INVERCARGILL

SURVEYED BY	R.J. FULTON	DATE	OCT. 62.
DRAWN	R. J. FULTON	DATE	MAY 63.
CHECKED	R. J. F.	DATE	MAY 63.

JOB NO.
4289/3
P.BK 165 FILE NO. 6/61

For detail of Deck see sheets 3+4

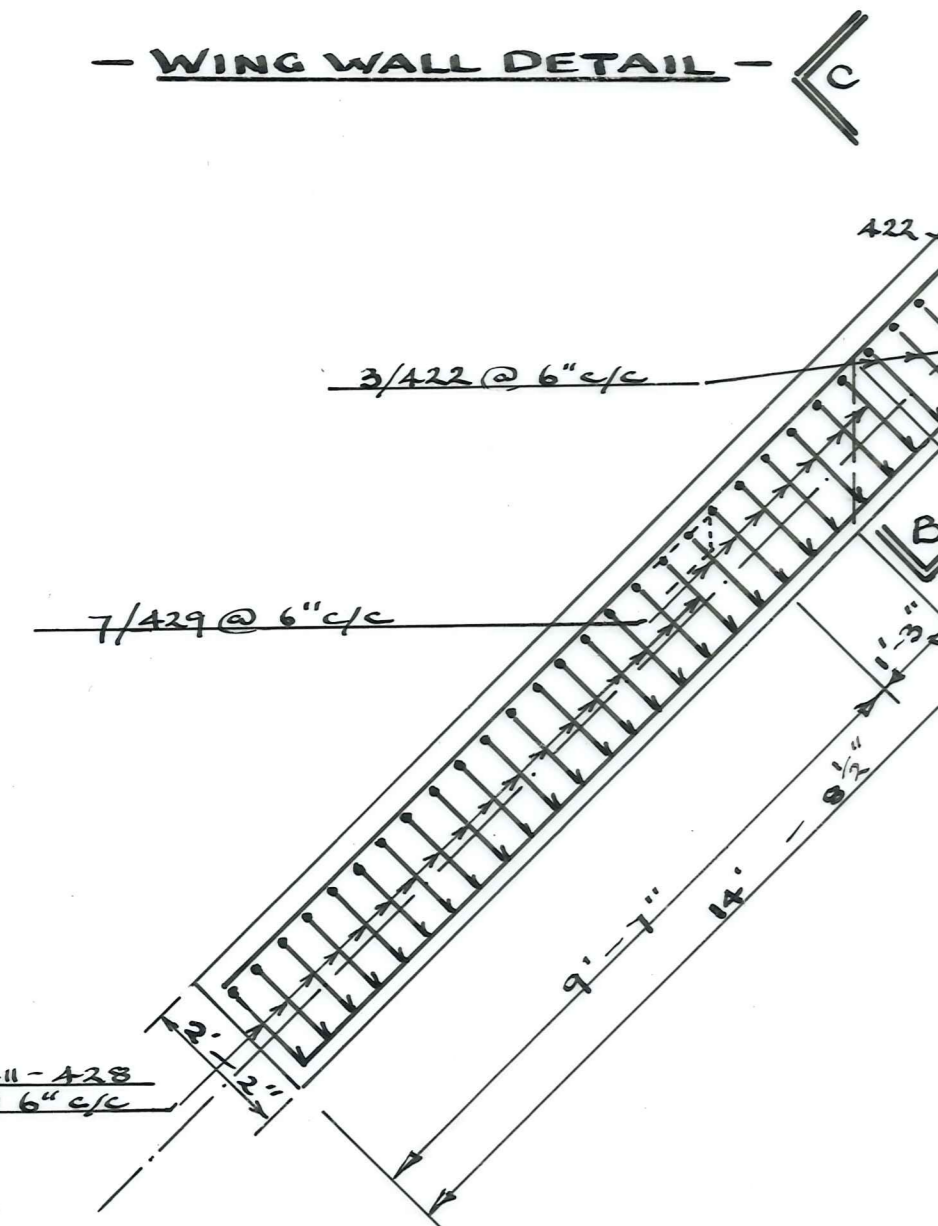
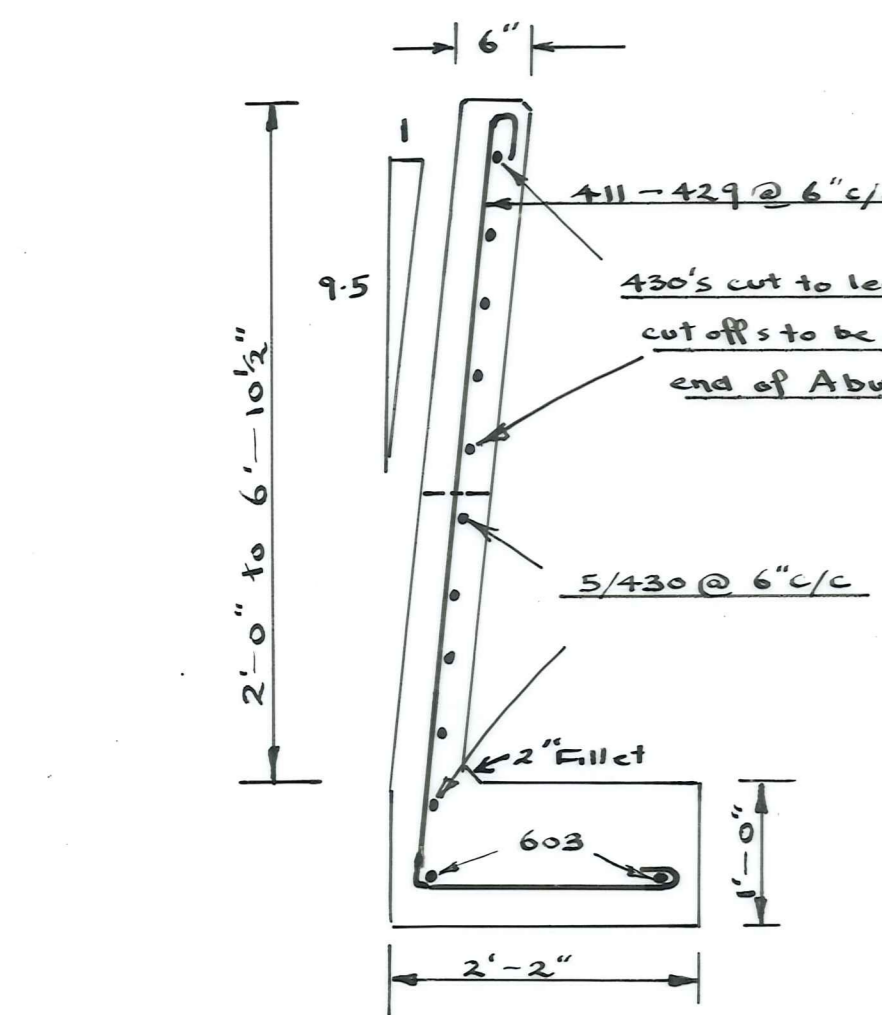




NOTE: - Steelwork for this wing wall is the same as the opp. end except for 3 additional 422's in vertical steel adjacent to end pile. Also the longitudinal steel in the footing of the wing wall is 606 instead of 603

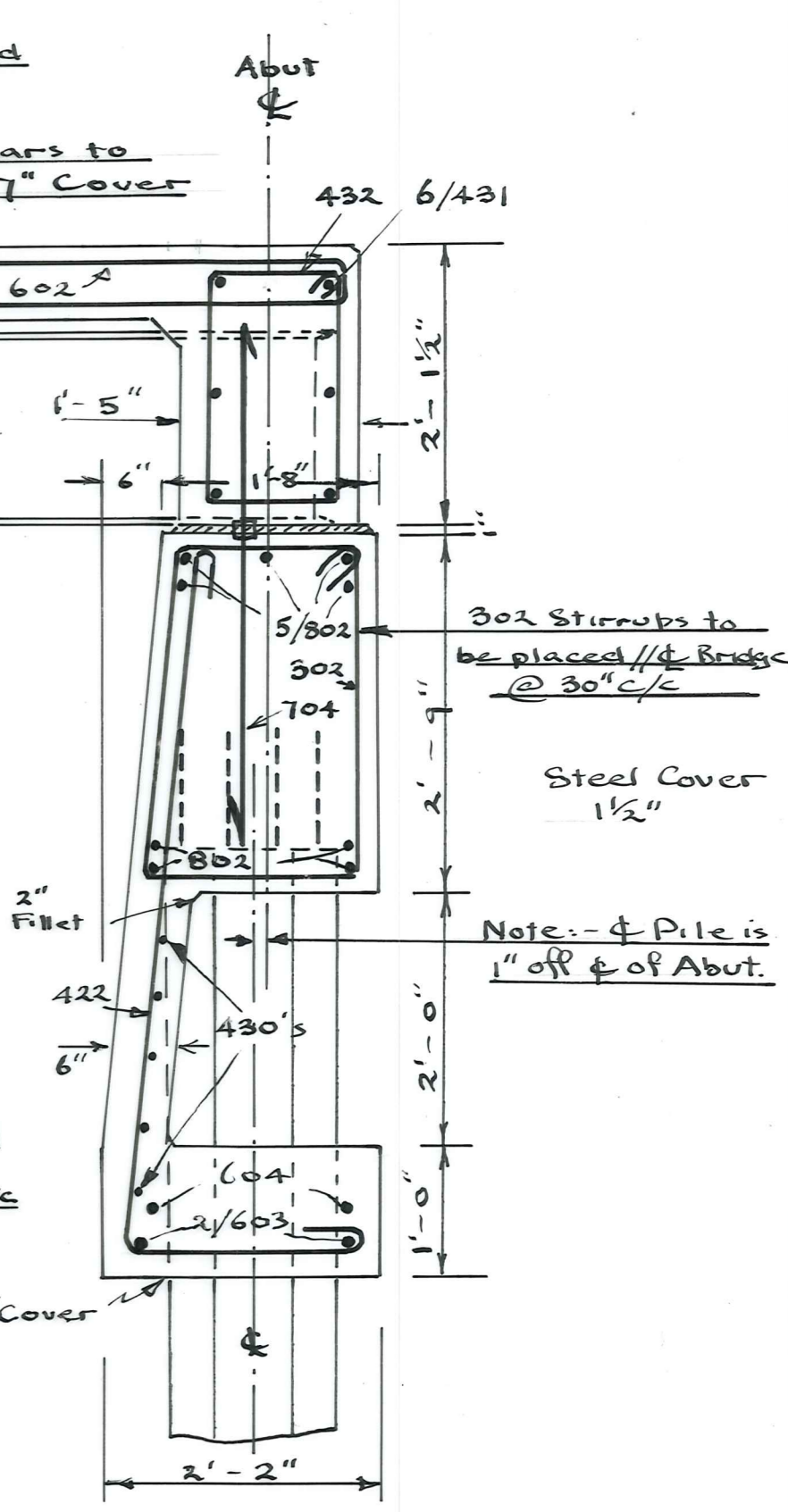
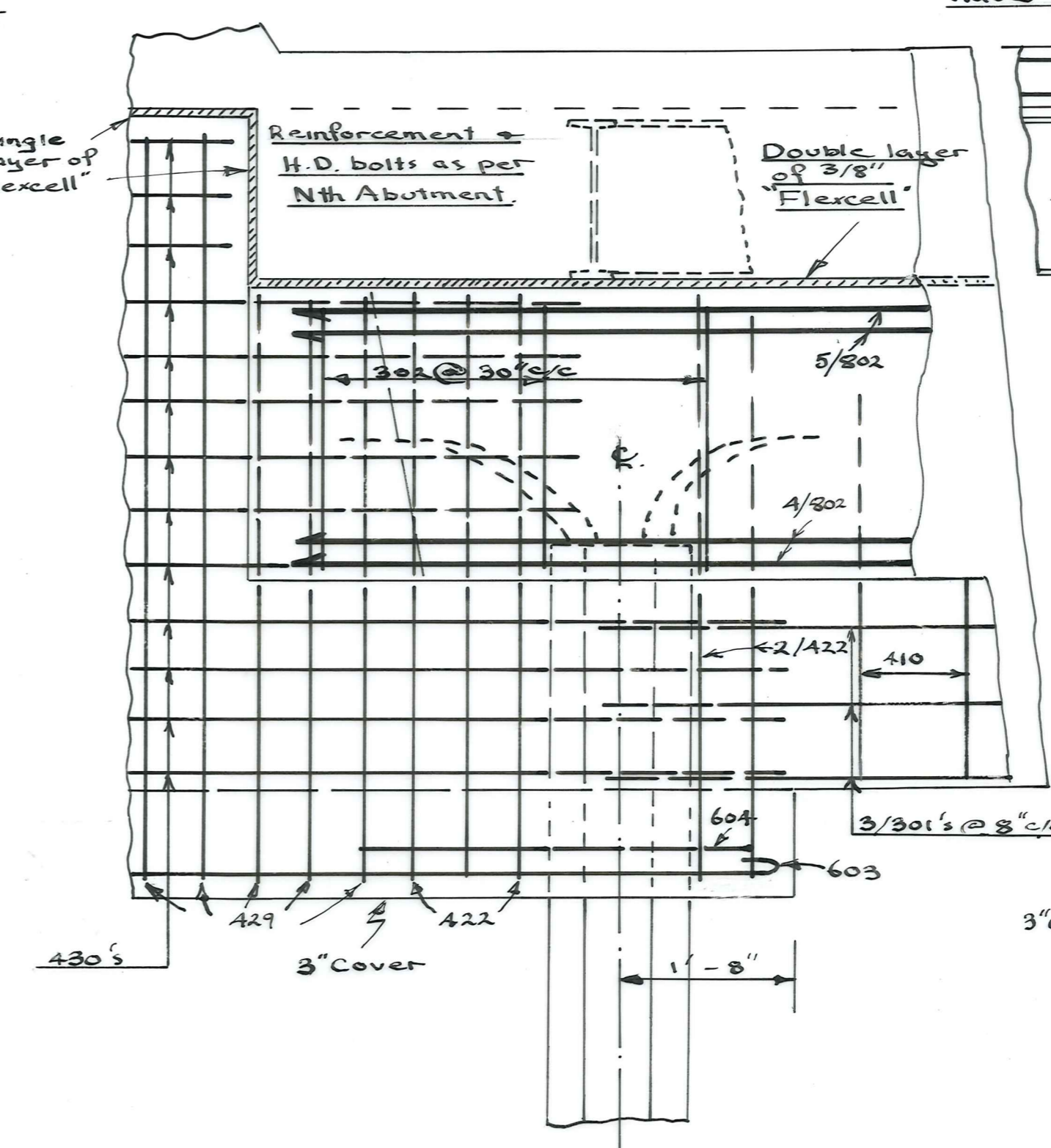
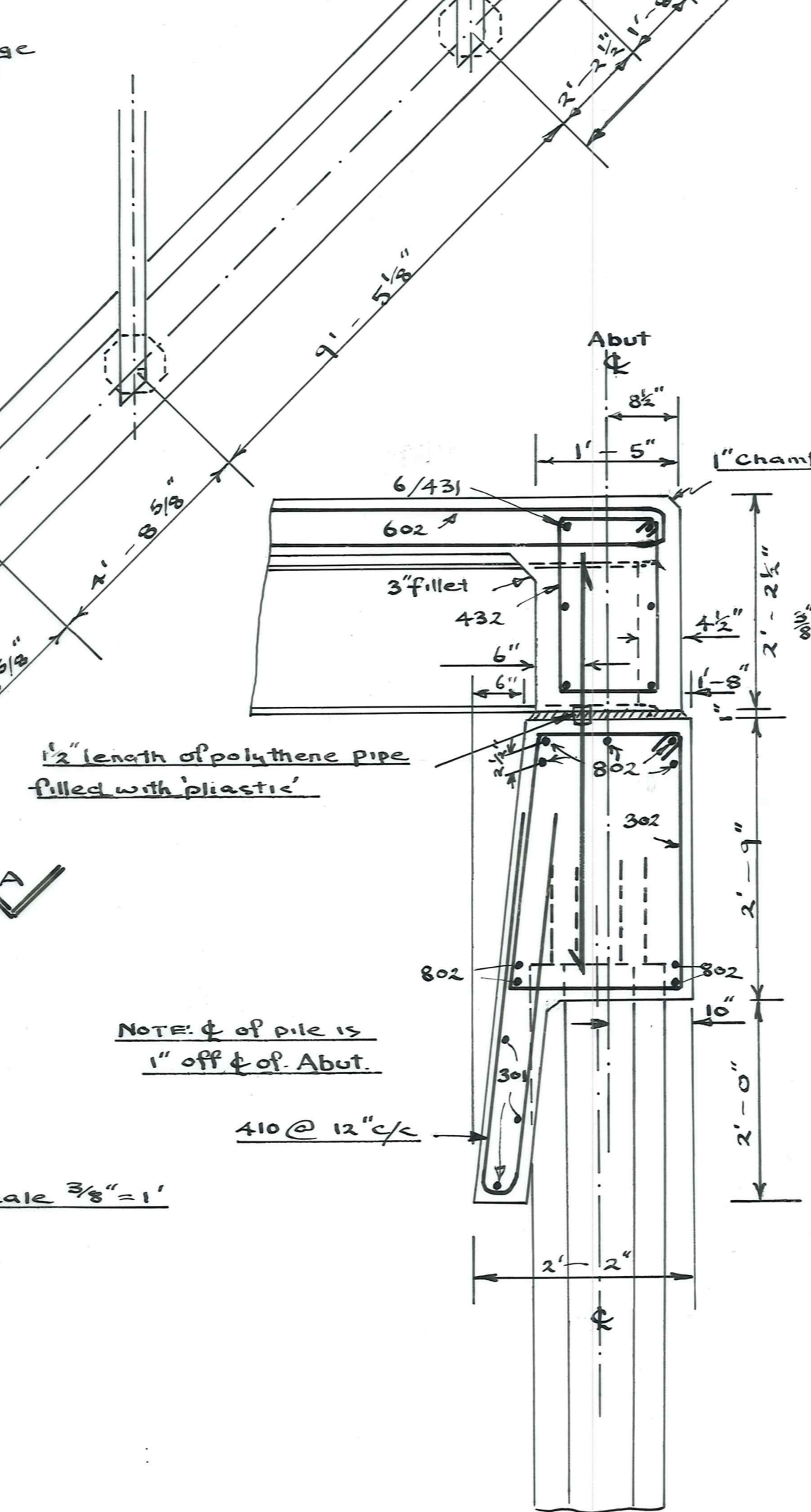
NOTE: - ϕ of pile row is 1 inch off ϕ of Abutment. All fillets + chamfers to be 1" unless shown otherwise.

NOTE: - Holding down bolts 704 to be constructed + positioned as shown on Nth Abutment.

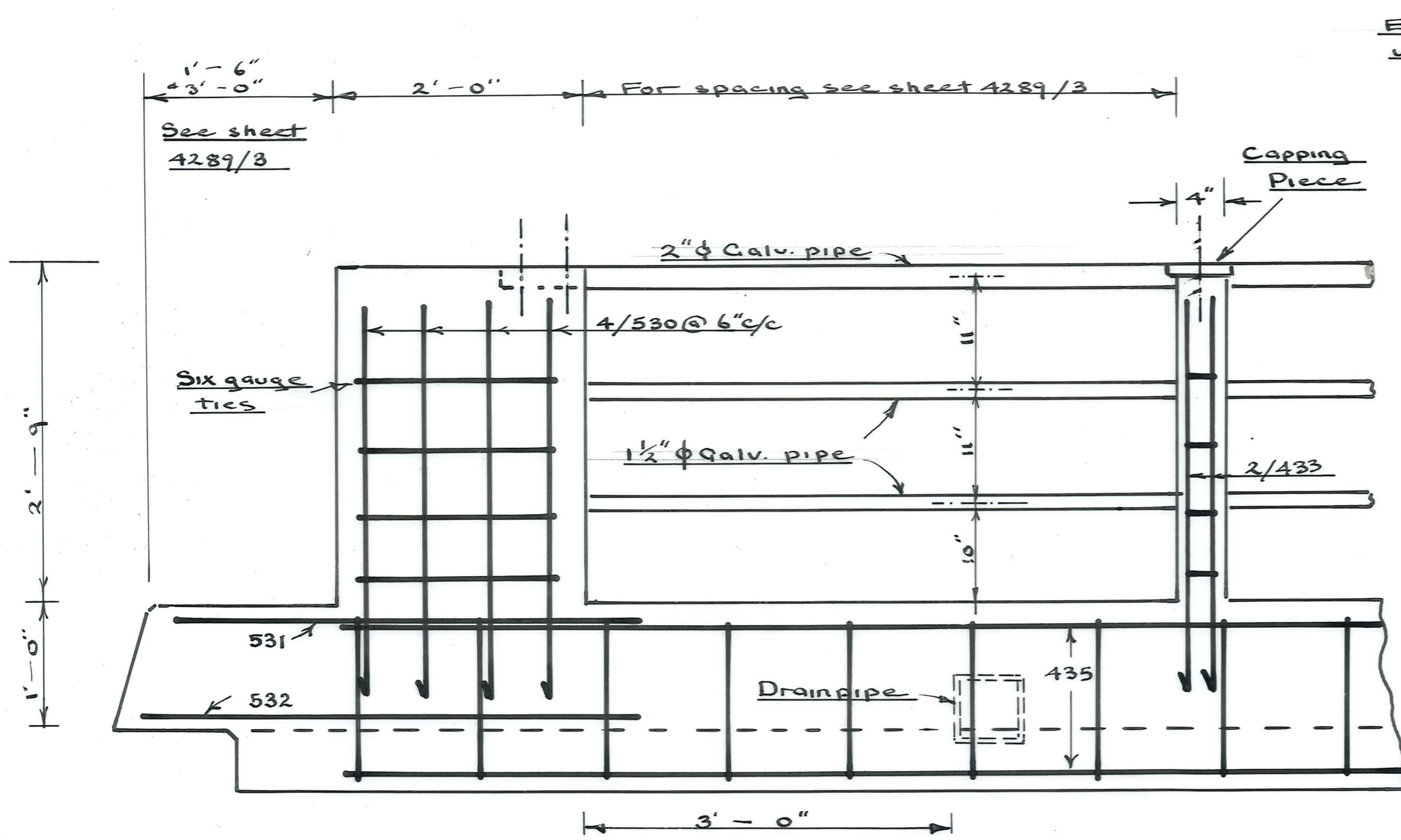


SOUTH ABUTMENT

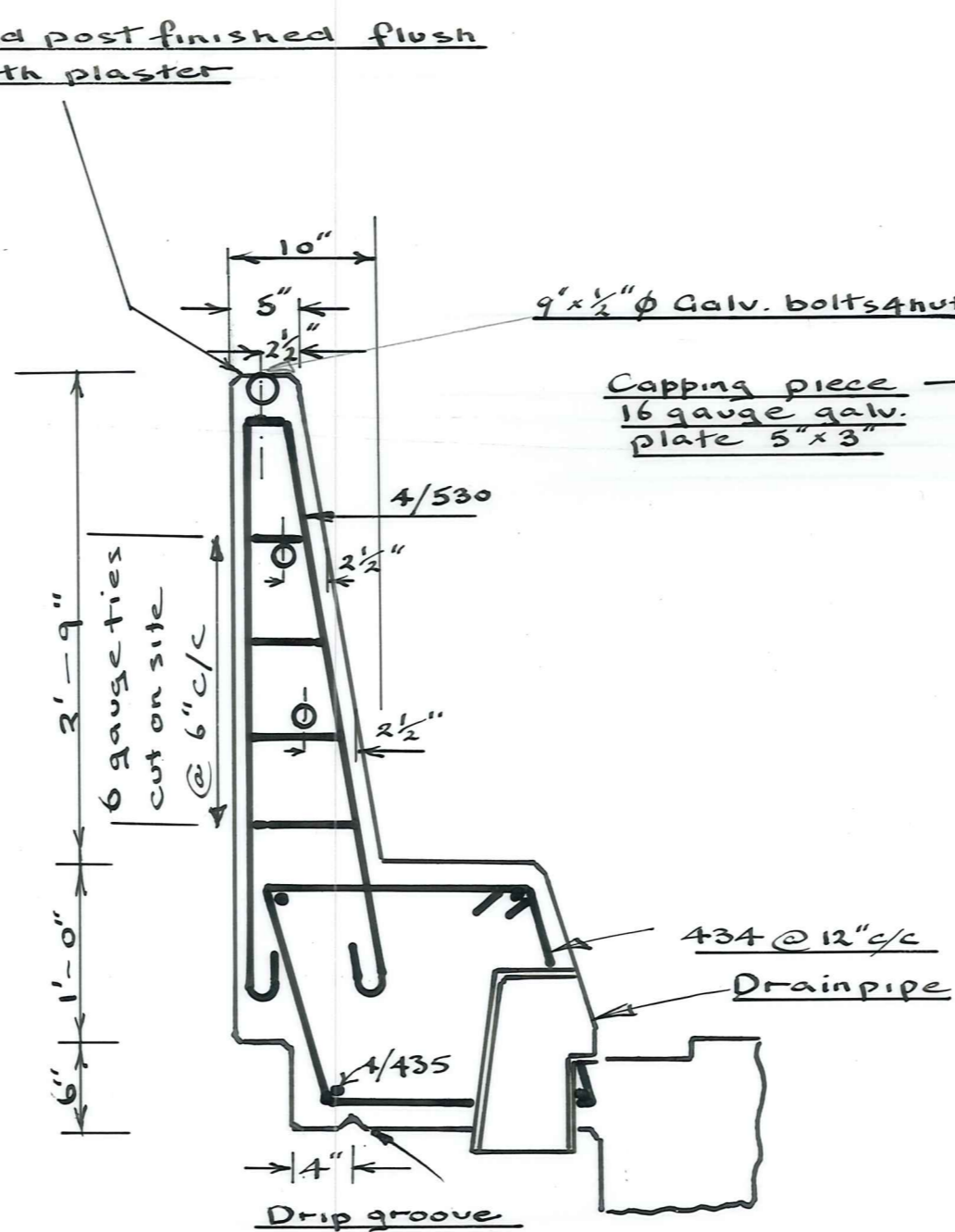
BRIDGE SKEW 45°



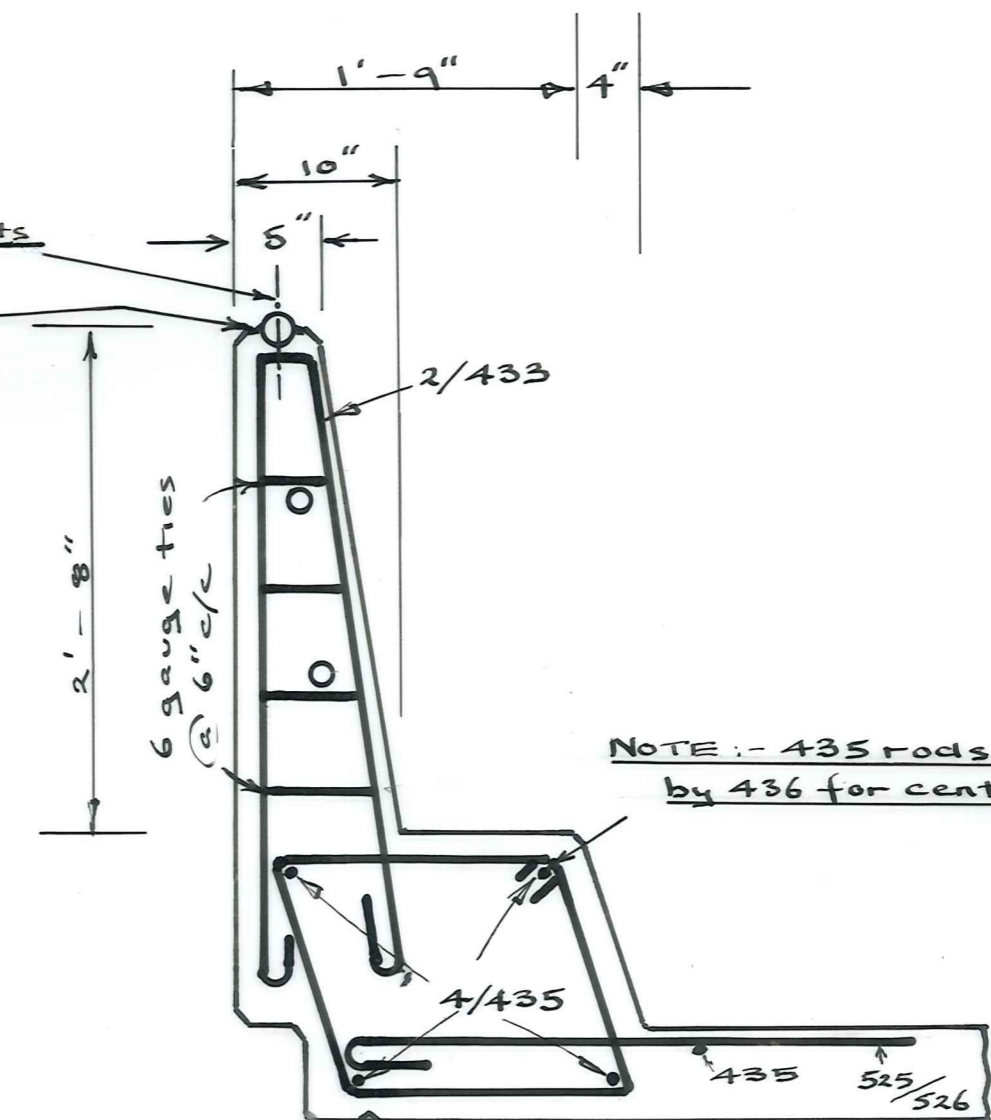
Scale $\frac{3}{4}'' = 1'$



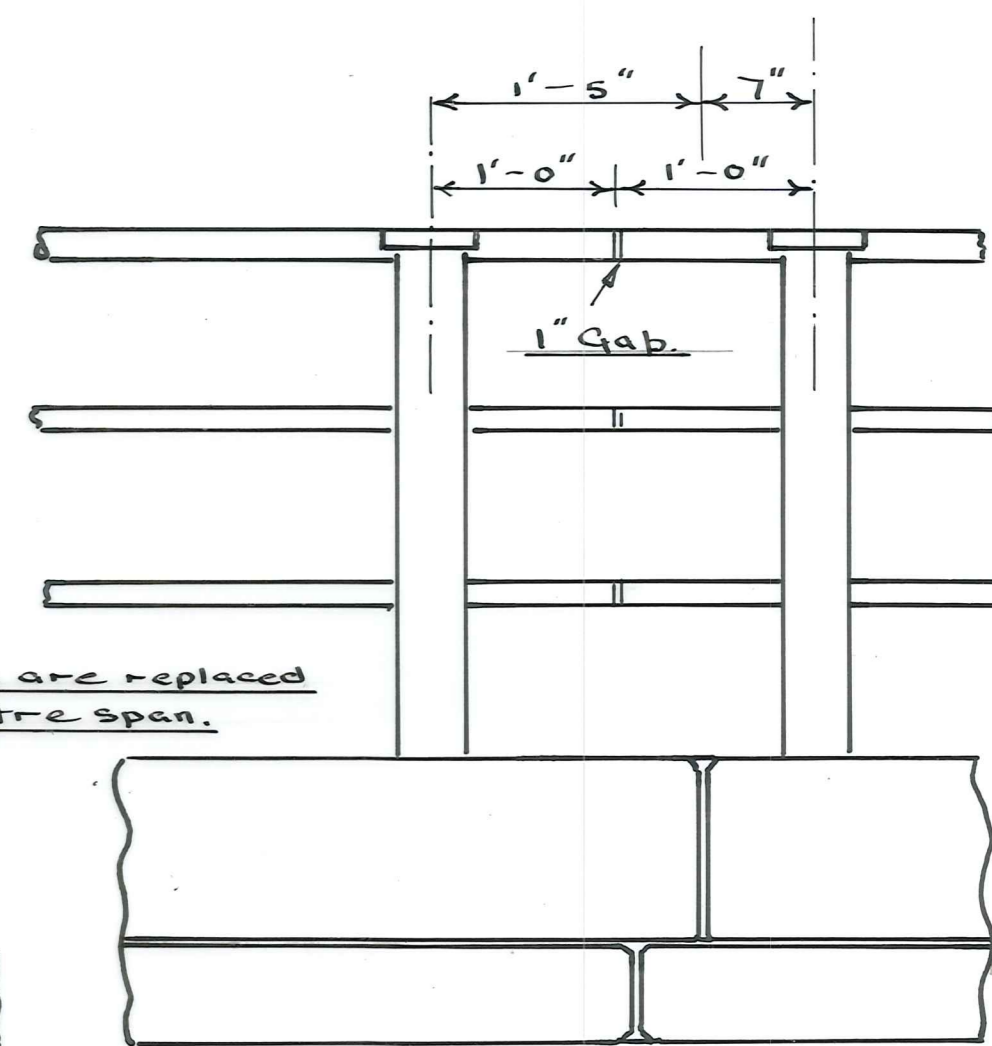
ELEVATION



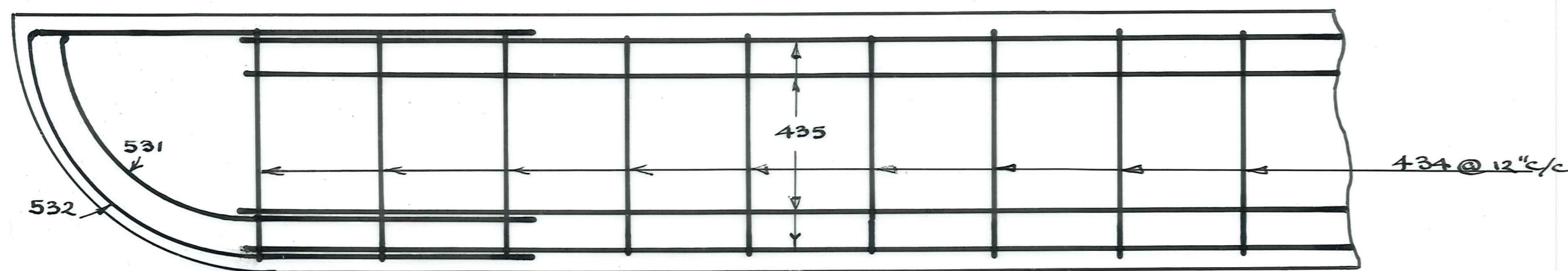
END POST SECTION



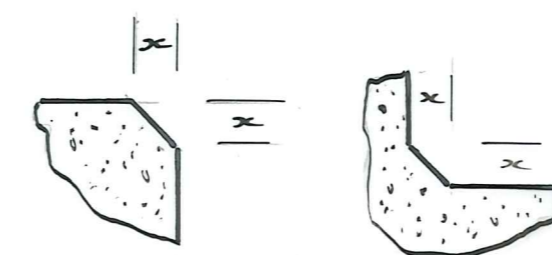
POST SECTION



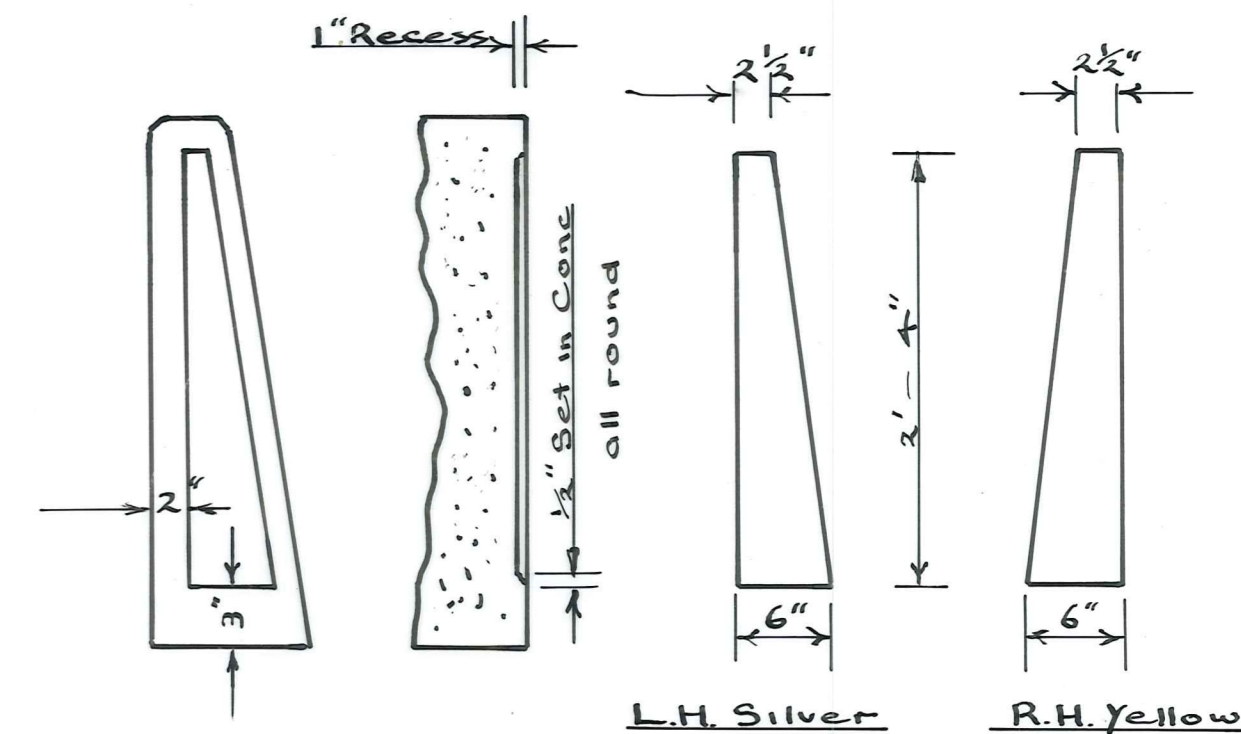
ELEVATION AT PIER



PLAN



- CHAMFER + FILLET DETAIL FOR BRIDGE -
NOTE: - x = 1" unless shown otherwise.

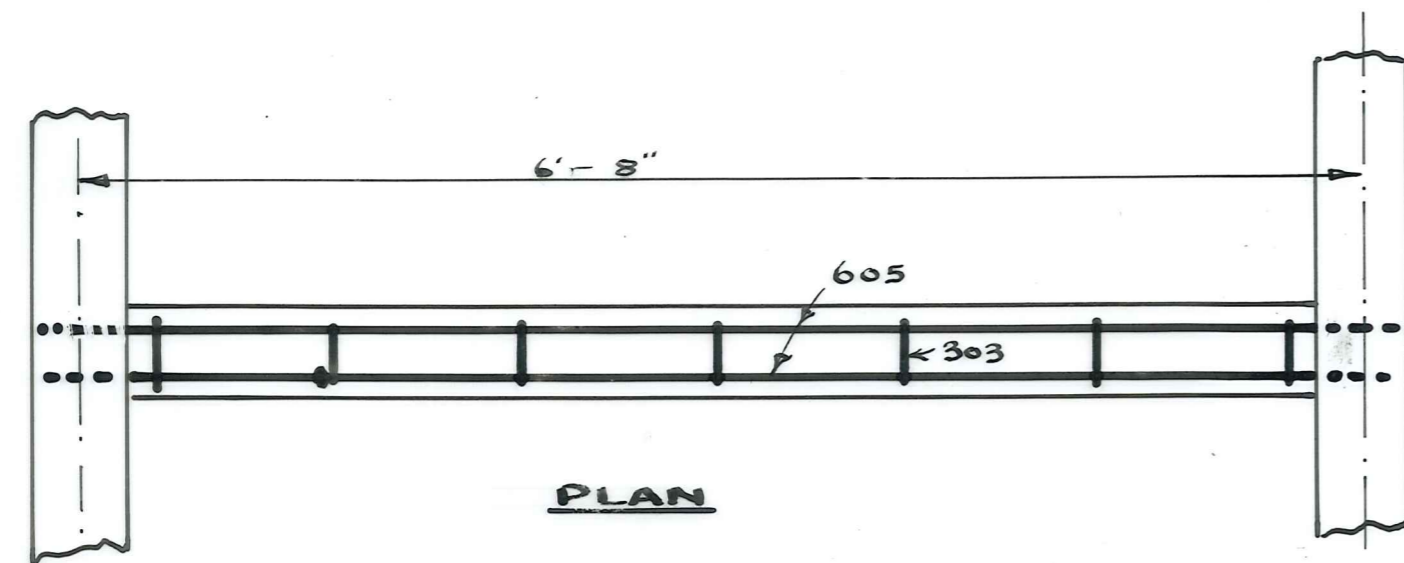


- MARKER STRIP DETAILS -
FOR END POSTS

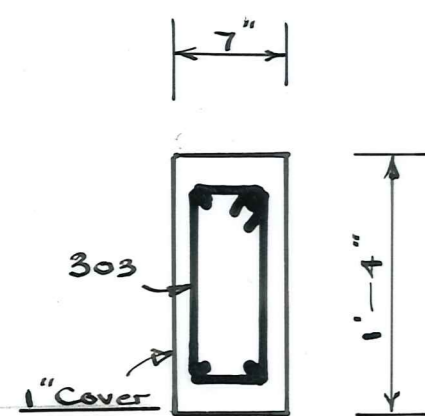
- DETAILS OF KERB, HANDRAILS + POSTS -

Scale 1" = 1'-0"

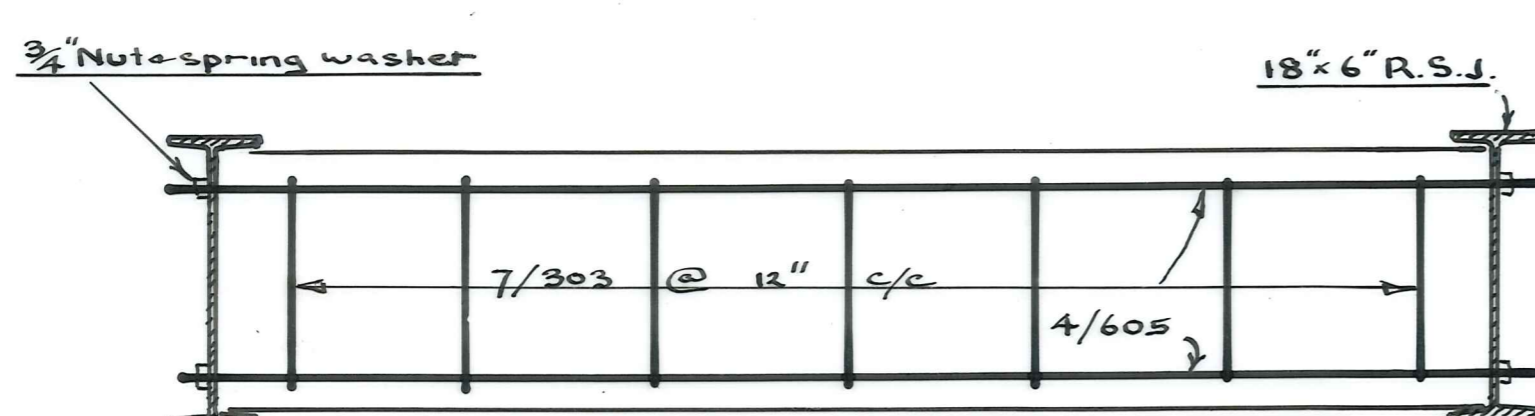
NOTE: - Stiffeners to be positioned as shown on sheet 4289/3



PLAN



SECTION

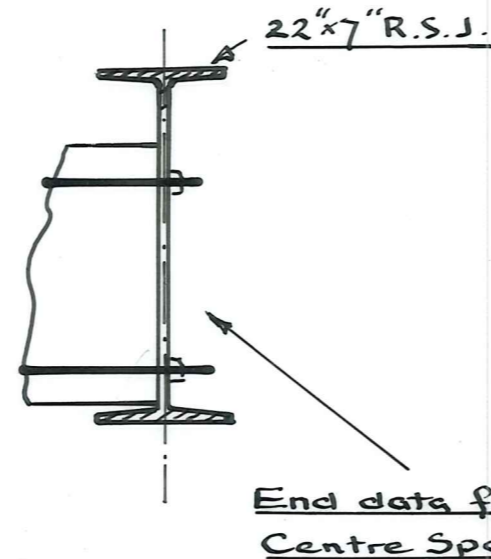


ELEVATION

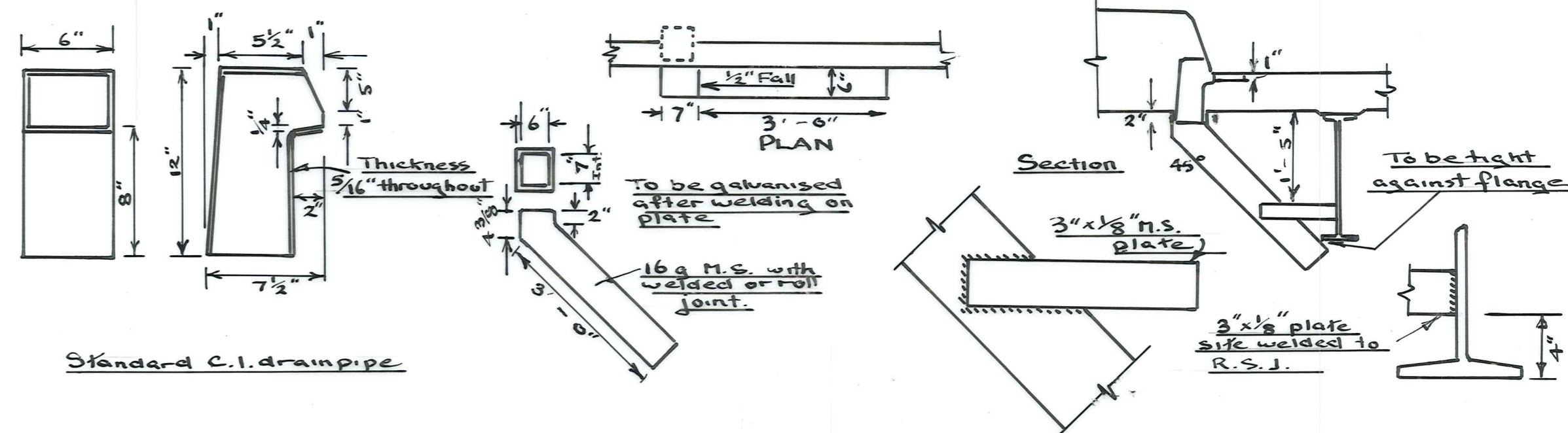
INTERMEDIATE STIFFENERS FOR ALL SPANS

Scale 1" = 1'-0"

NOTE: - 1. Nuts to be lightly tightened against boxing
2. Stiffeners to be poured before the Deck steel is placed
3. Nuts to be tightened after shrinkage in concrete has taken place.



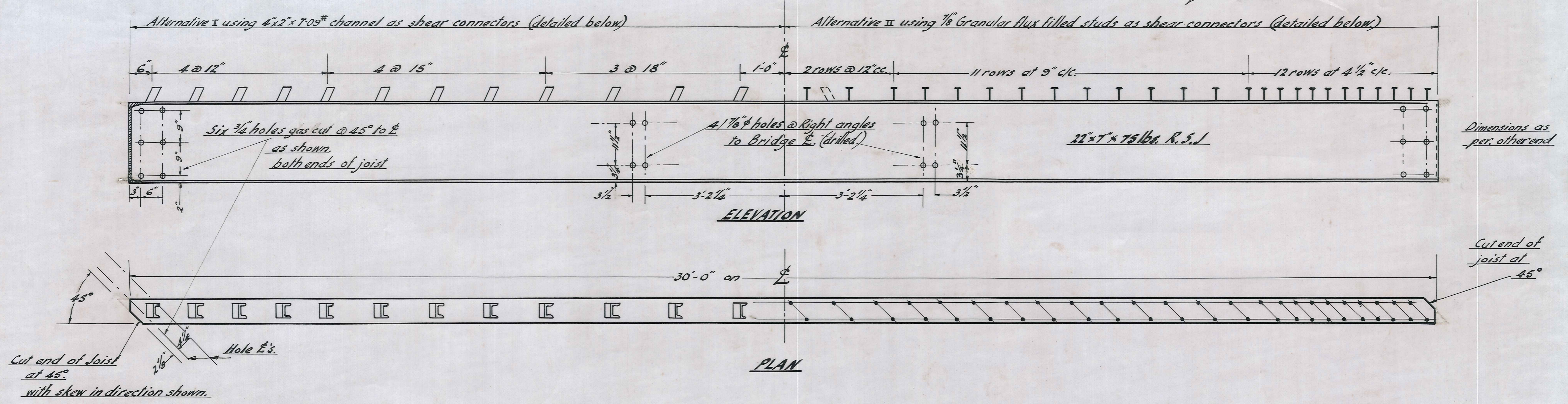
End data for Centre Span.



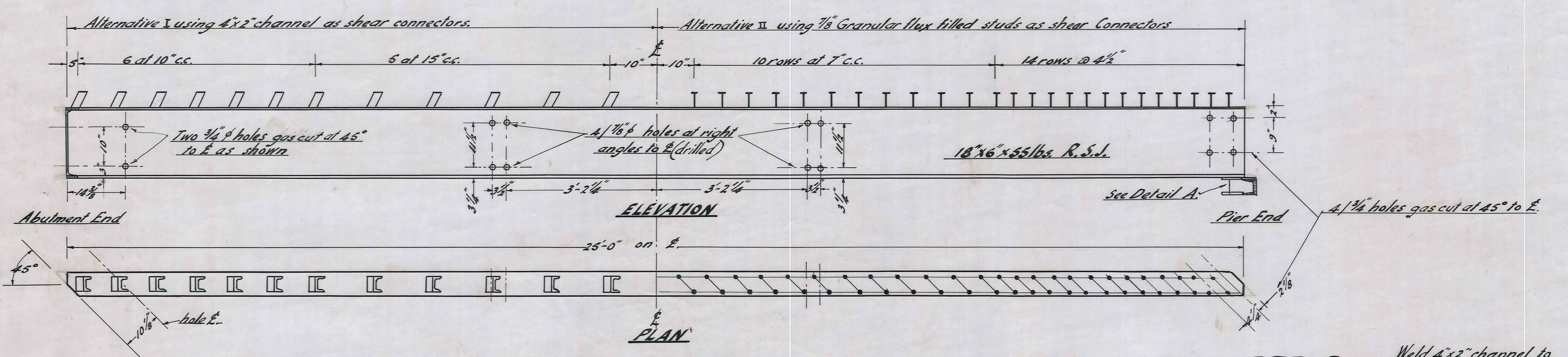
- DRAIN PIPE DETAILS -

NOTE: - Cover 1/2" unless otherwise specified.

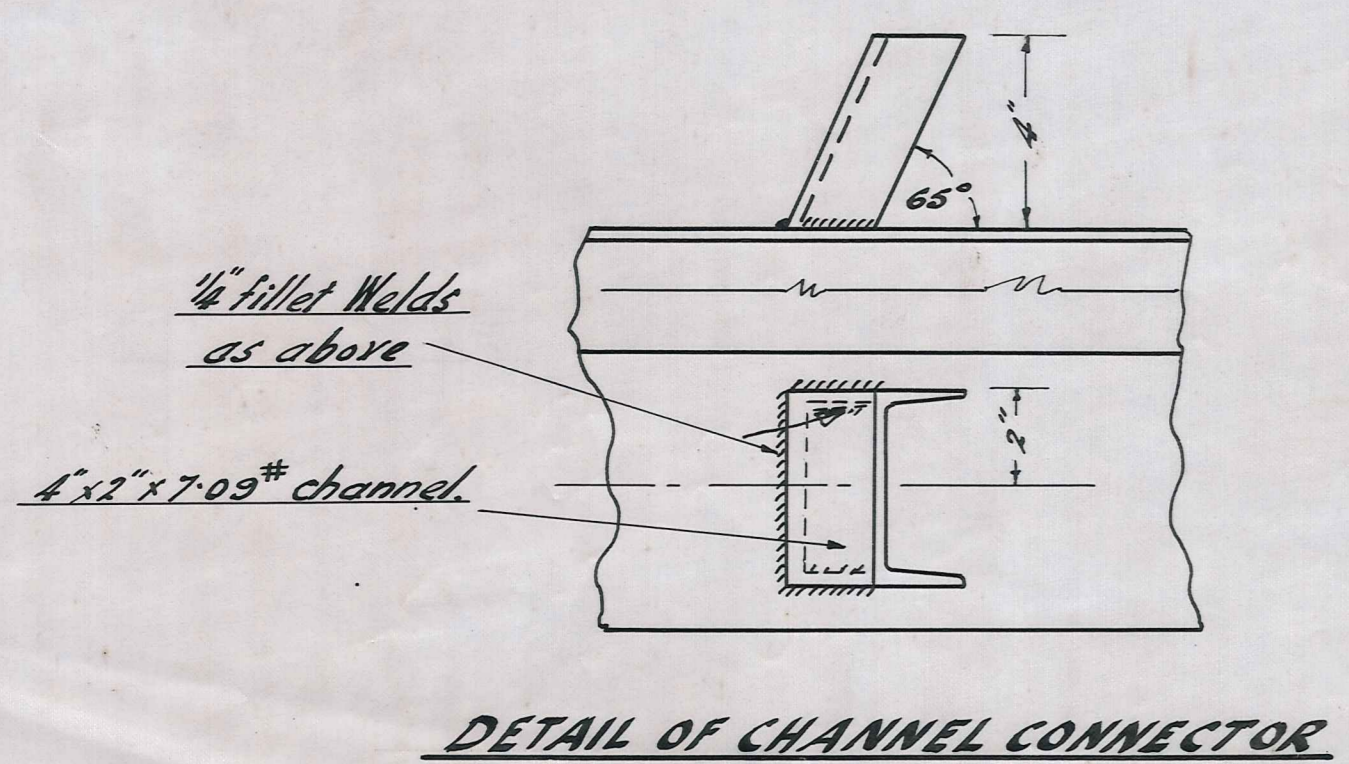
Note: 3,000* Concrete reqd. for deck.



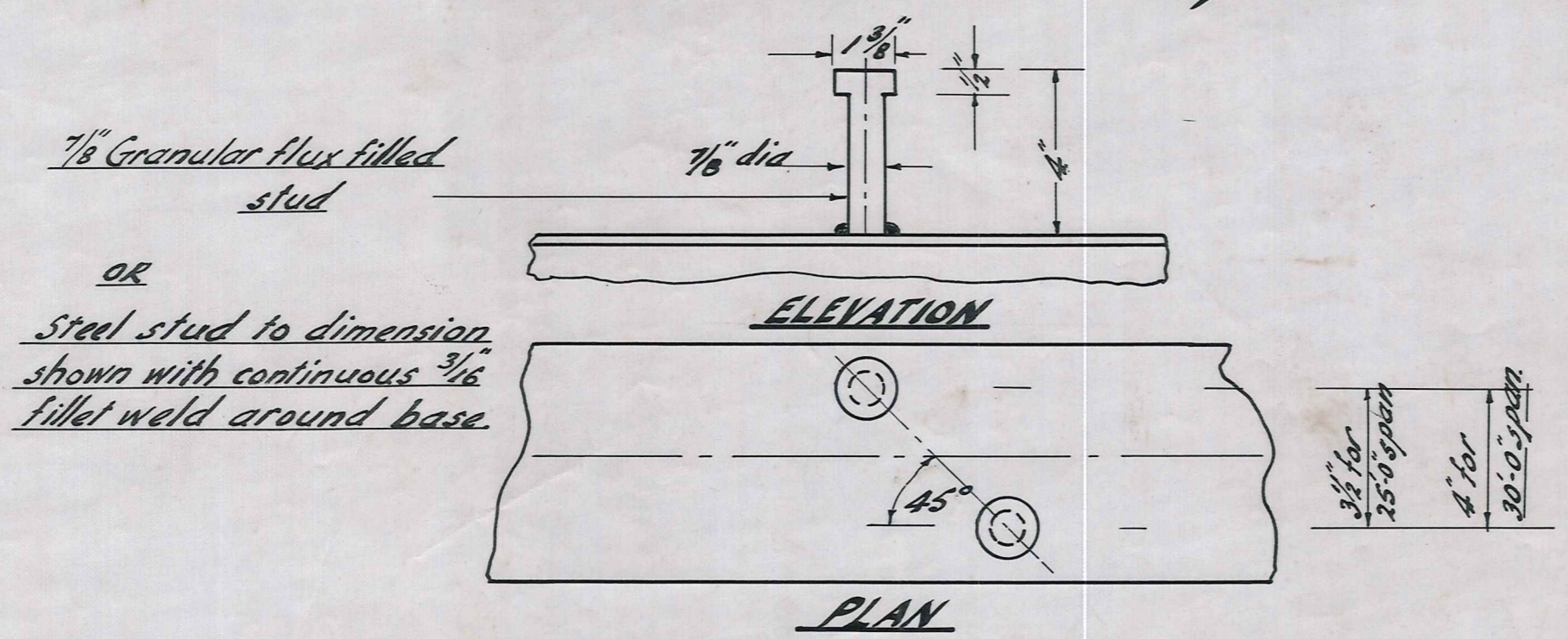
CENTRAL 30'-0" SPAN JOISTS 4 Reqd. thus
Scale: 3/4" = 1 FT.



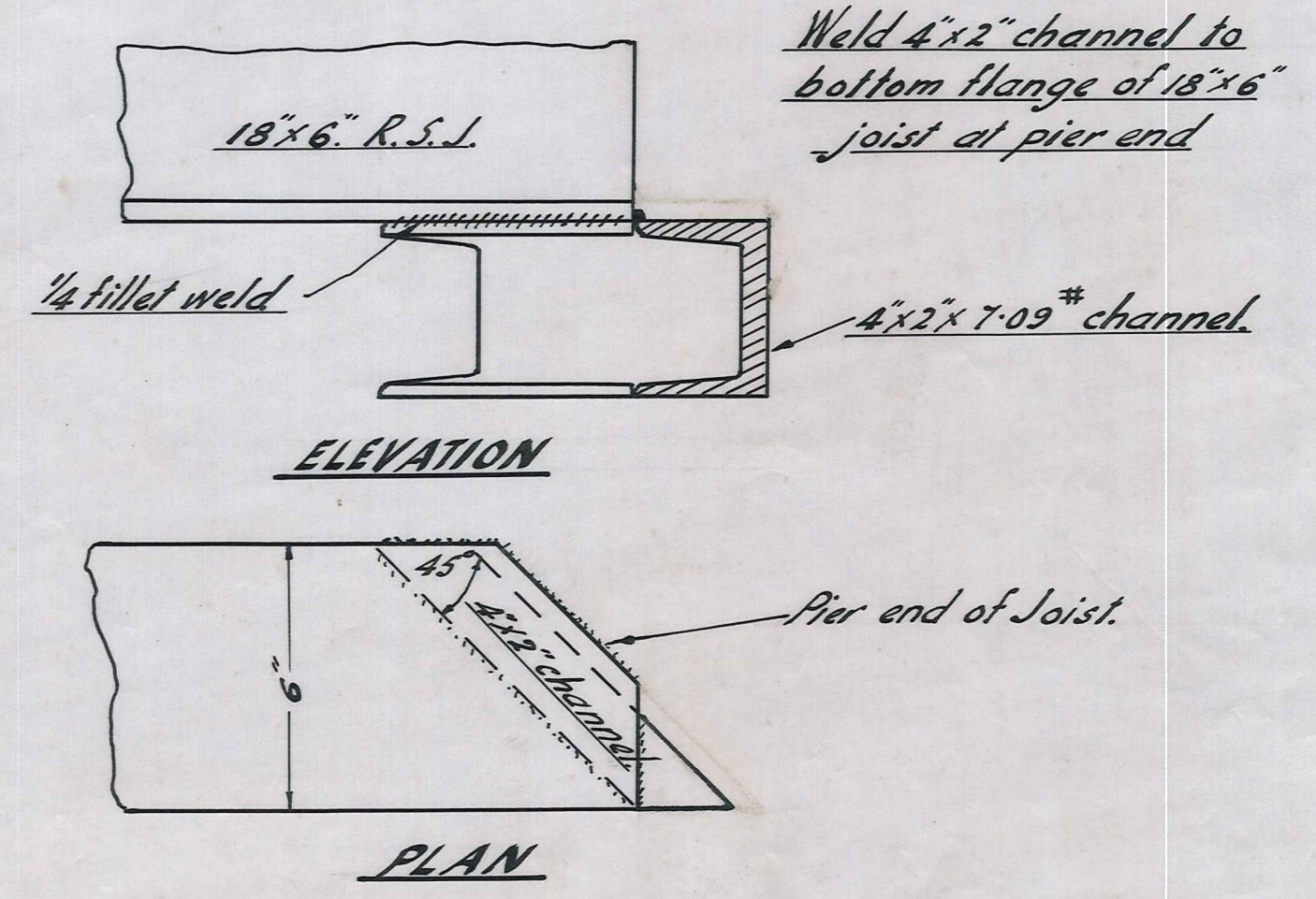
END 25'-0" SPAN JOISTS 8 Reqd. thus Scale: 3/4" = 1 FT.



DETAIL OF CHANNEL CONNECTOR



DETAIL OF 7/8" STUD CONNECTOR



DETAIL "A" 3/4" = 1 FT.

