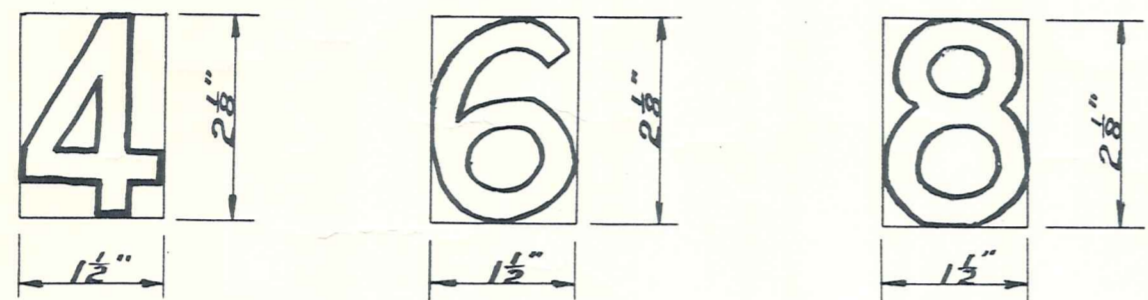


All letters and numbers $\frac{1}{4}$ " thick and slightly tapered.



Width of numbers $\frac{7}{16}$ "

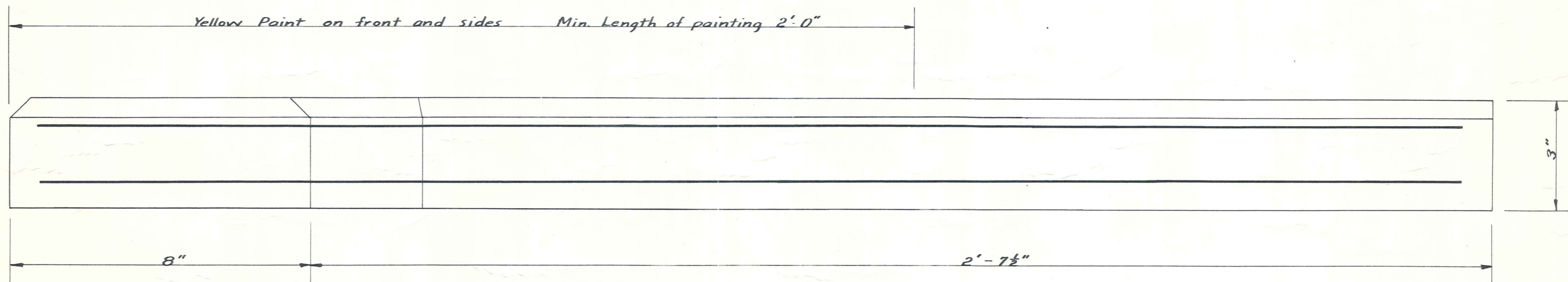
NOTE ALL NUMBERS AND LETTERS TO N.Z.S.S. 1152 APPENDIX D.

Suggested method of pouring.

- Place $\frac{3}{4}$ " concrete in bottom of mould.
- Put in reinforcing rod.
- Place $1\frac{1}{2}$ " concrete in mould.
- Put in next reinforcing rod.
- Fill mould to top.

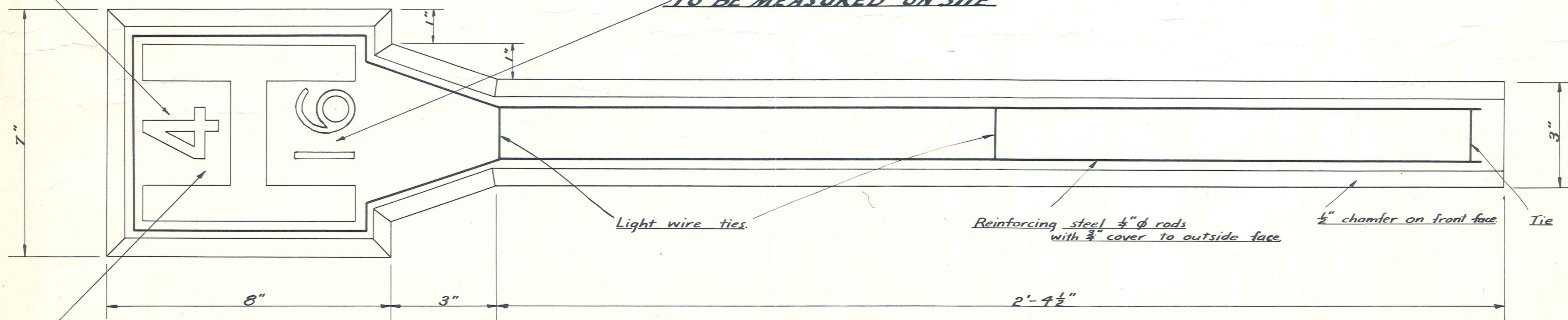
Painting Requirements

- Cement wash over surface to be painted to fill all voids.
- "Cemseal" over surface.
- Undercoat over surface.
- High gloss yellow over surface, with the letters and numbers in high gloss black.



SIZE OF MAIN IN INCHES

DISTANCE IN FEET FROM MARKER TO HYDRANT OR VALVE TO BE MEASURED ON SITE



LETTERS ON EMBOSSED ENAMELLED METAL PLATE INSET IN CONCRETE

Scale: $\frac{1}{4}$ Full Size.

STANDARD HYDRANT & VALVE MARKERS

DUFFILL, WATTS & KING
CIVIL ENGINEERS AND SURVEYORS
DUNEDIN and INVERCARGILL

DESIGNED BY	T. Page	DATE	Sept 61
CHECKED BY	T. Page	DATE	Sept 61

JOB NO.
4256/6