

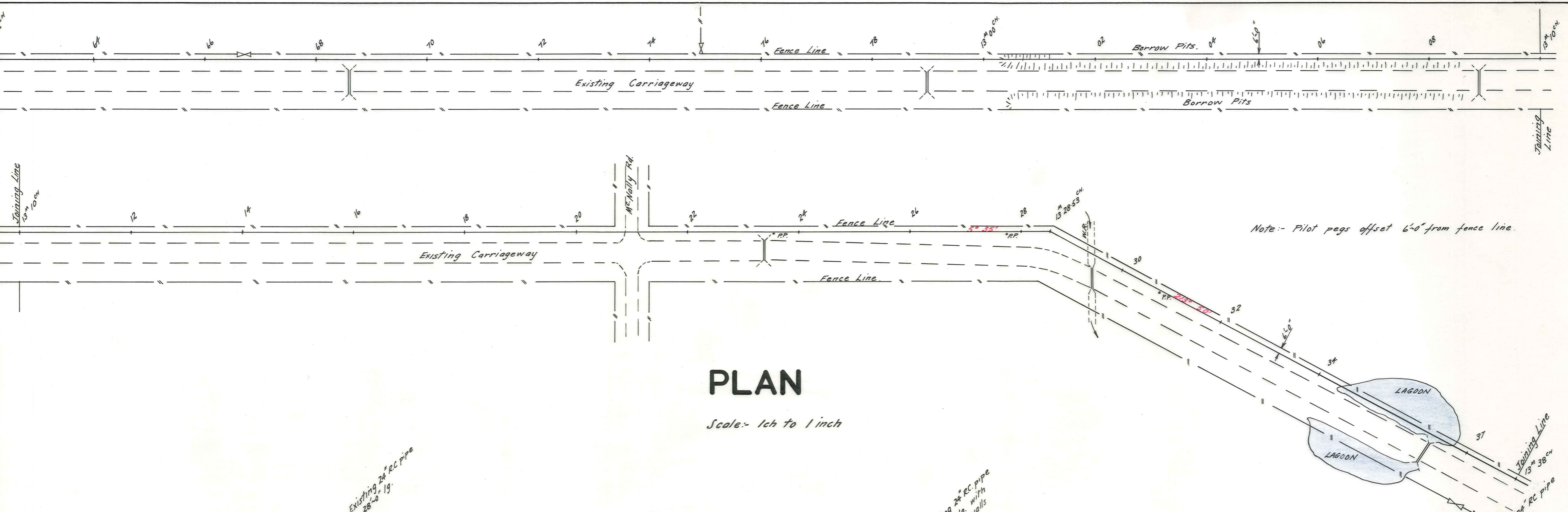
ENT COUNTY COUNCIL

**IDABURN - OMAKAU ROAD**  
12" 40<sup>CH.</sup> TO 12" 62<sup>CH.</sup>

COUNTY ENGINEER

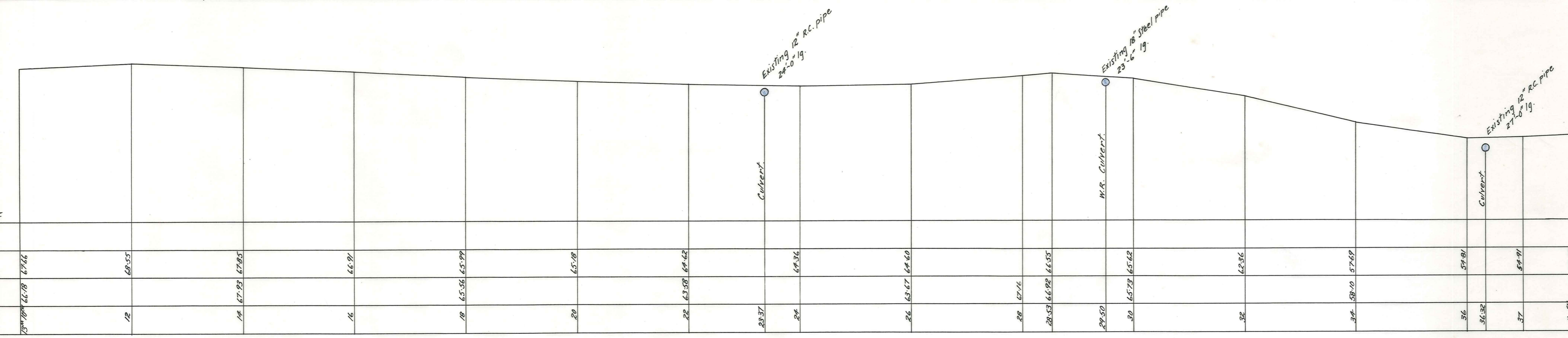
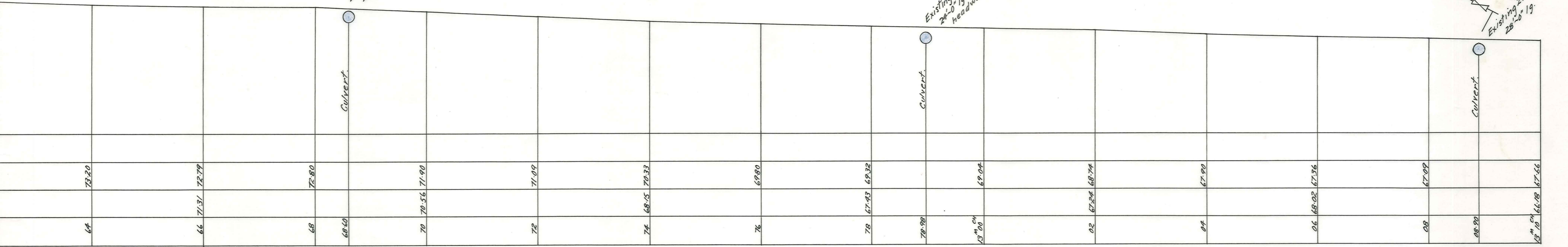
NAME	DATE
SURVEYED	5/61
DESIGNED	9/61
CALCULATED	
CHECKED	

**DWG.**



# PLAN

Scale:- 1ch to 1 inch



# LONGITUDINAL SECTION

Scales:- Horiz. 1ch to 1inch.  
Vert. 10ft. to 1inch.

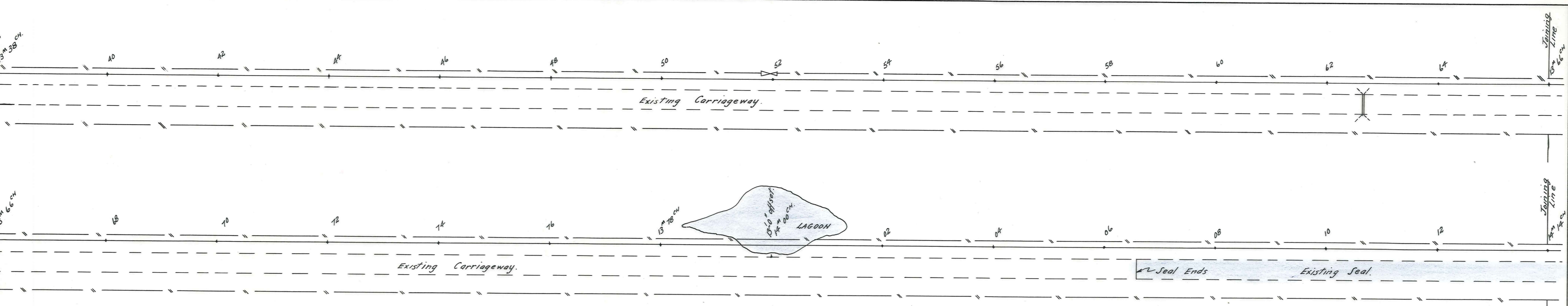
ENT COUNTY COUNCIL

**IDABURN - OMAKAU ROAD**  
12<sup>m</sup> 62<sup>ch</sup> TO 13<sup>m</sup> 38<sup>ch</sup>

COUNTY ENGINEER

	NAME	DATE
SURVEYED	Early	5/11
DRAWN		6/1
CALCULATED		
CHECKED		

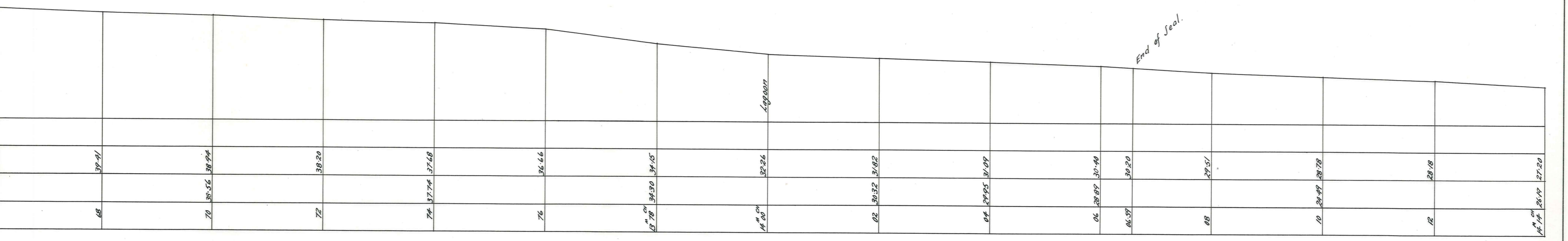
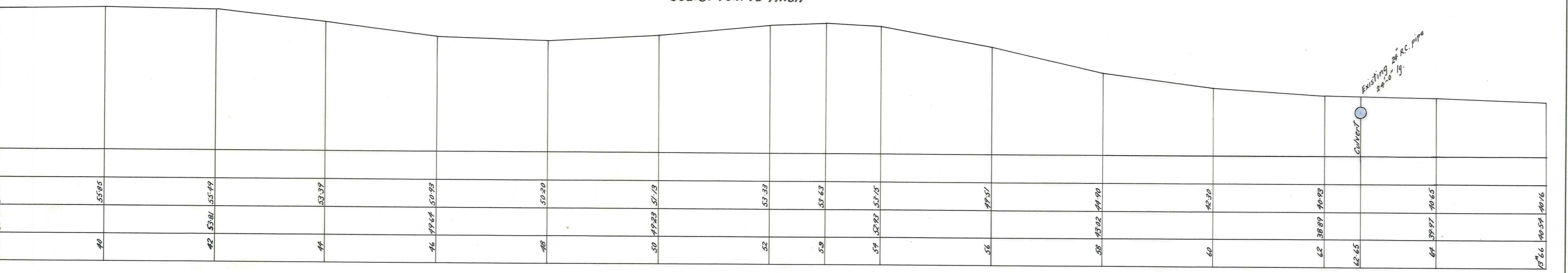
**DWG.**



# PLAN

Scale: 1 in. to 1 inch

Note: Pilot Pegs offset 60' from fence line.



# LONGITUDINAL SECTION

Scales: Horiz. 1 in. to 1 inch  
Vert. 10 ft. to 1 inch.

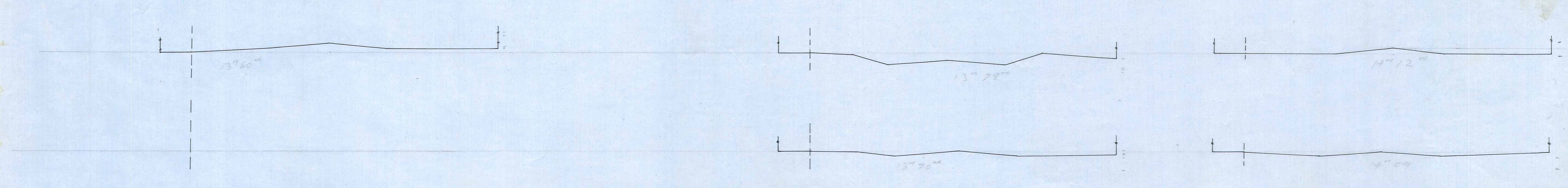
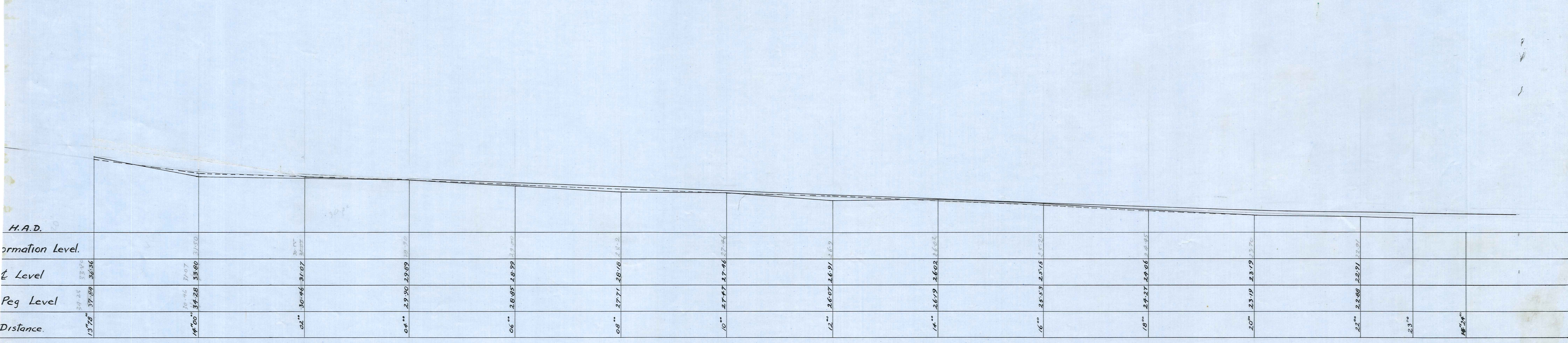
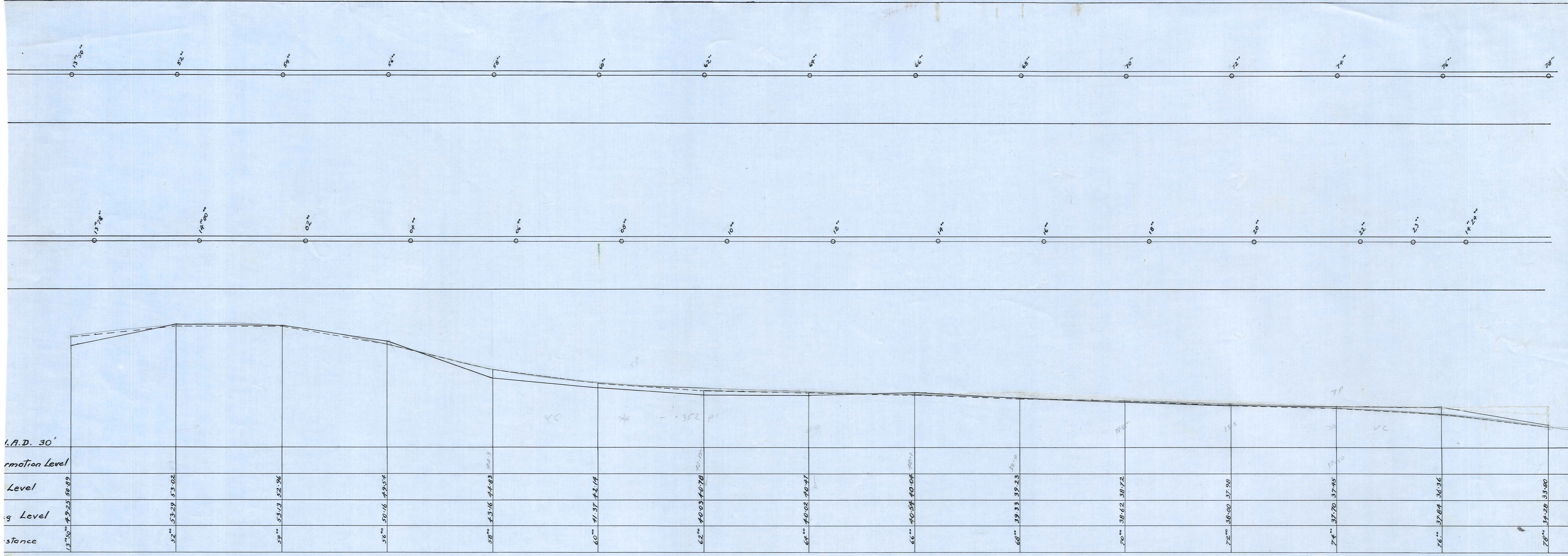
NT COUNTY COUNCIL

**IDABURN - OMAKAU ROAD**  
13<sup>M.</sup> 38<sup>CH.</sup> TO 14<sup>M.</sup> 14<sup>CH.</sup>

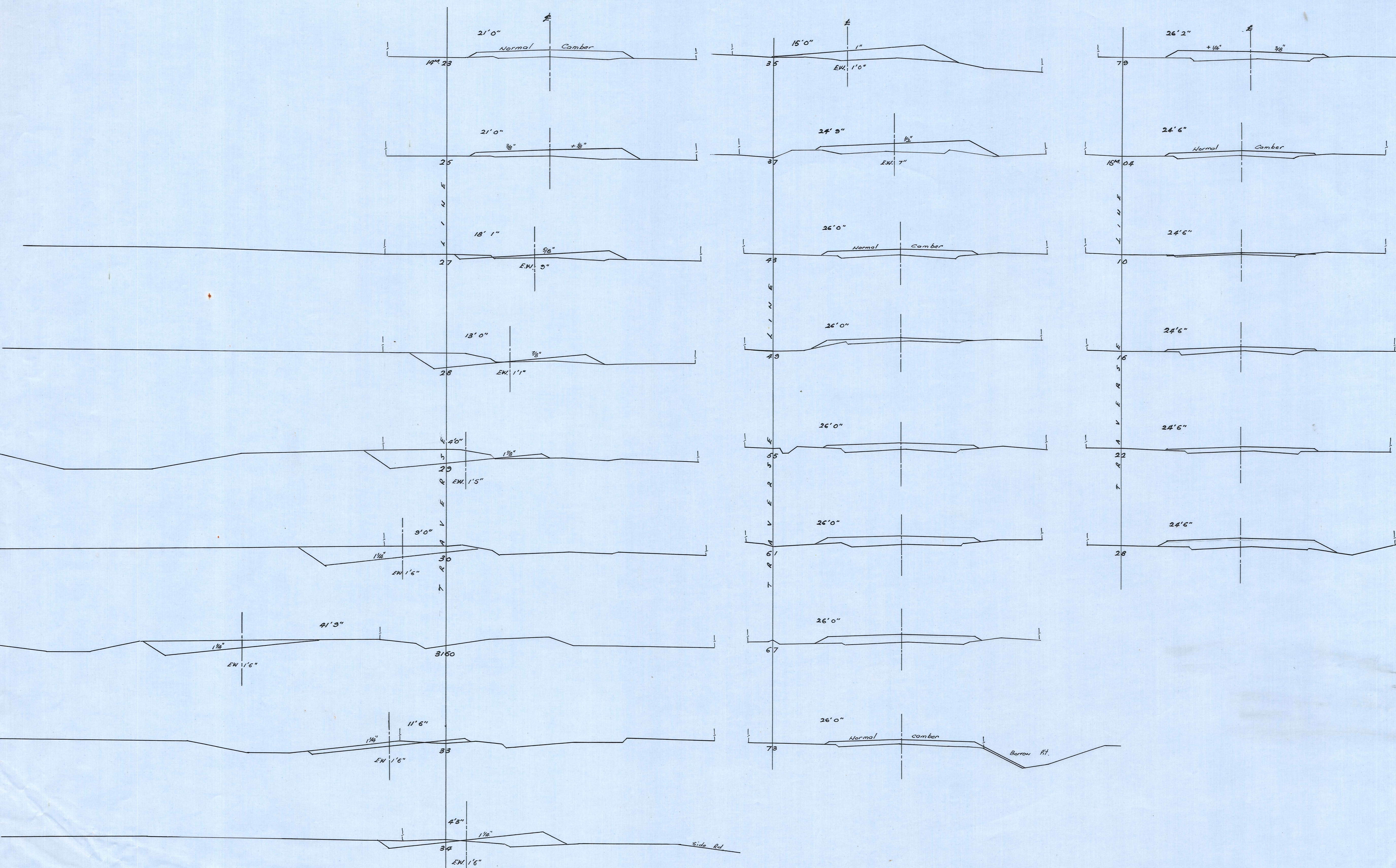
COUNTY ENGINEER  
/ /

	NAME	DATE
SURVEYED	Earthy	5/61
DESIGN		8/61
CALCULATED		
CHECKED		

DWG



VINCENT COUNTY COUNCIL      IDABURN OMAKAU ROAD  
 13<sup>m</sup> 50<sup>oo</sup>      14<sup>m</sup> 24<sup>oo</sup>



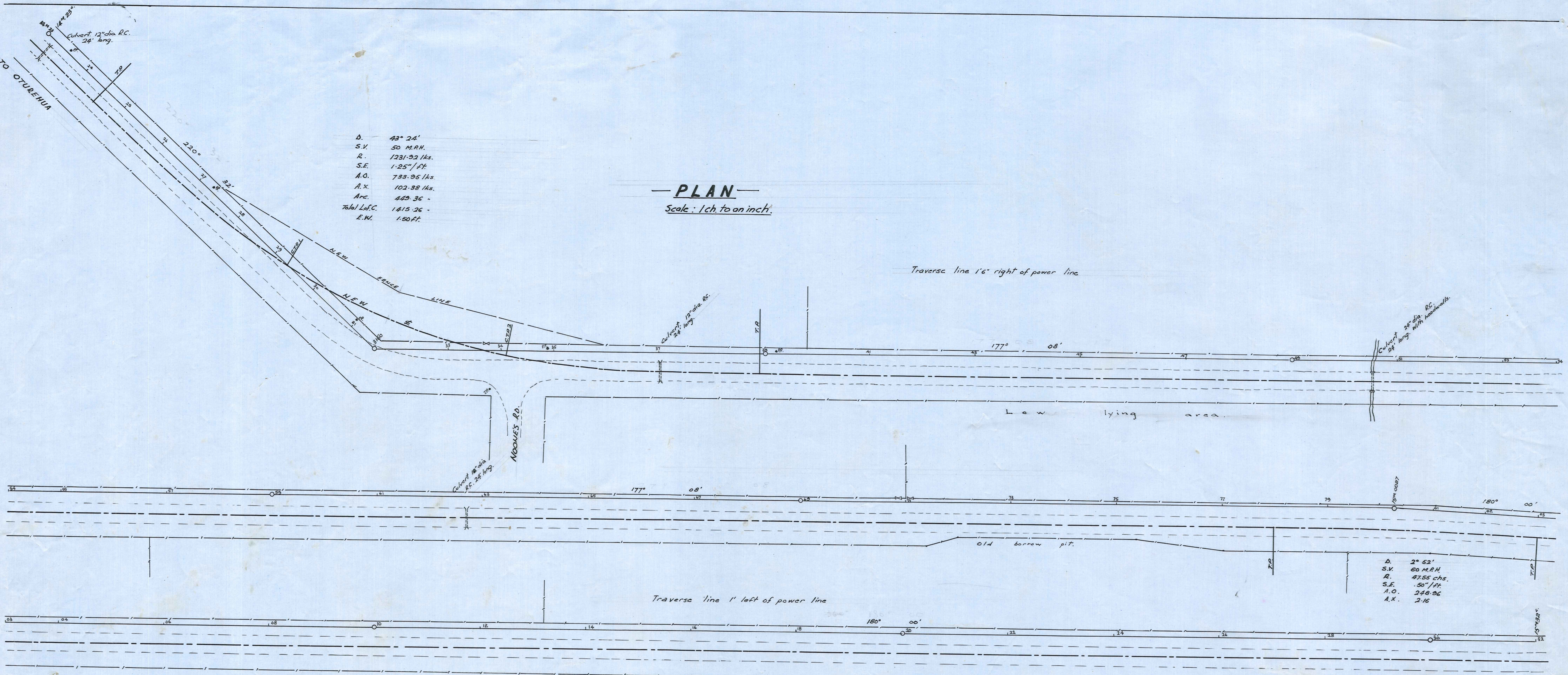
INCENT COUNTY COUNCIL

IDABURN - OMAKAU M.H. 227.  
 CROSS - SECTIONS 14<sup>M. 23<sup>C.</sup></sup> - 15<sup>M. 28<sup>C.</sup></sup>  
 SCALE: 10 FT. TO AN INCH.

APPROVED:  
*D. H. Beck*  
 COUNTY ENGINEER 5/59

Surveyed by S.A. Wragge 5/59  
 Drawn - - - -  
 Calculated - - - -  
 Checked - - - -  
 Traced - - - -

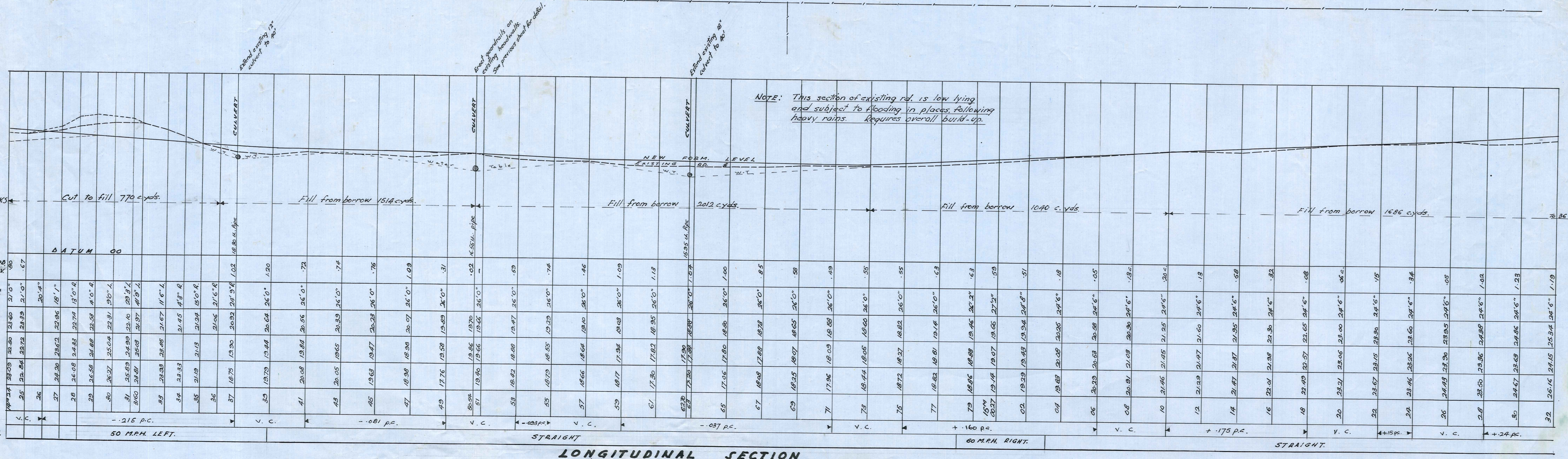
PLAN NO 23/8



D. 43° 24'  
 S.V. 50 M.P.H.  
 R. 1231.92 lks.  
 S.E. 1.25" / ft.  
 M.O. 733.95 lks.  
 A.X. 102.38 lks.  
 Arc. 449.36 -  
 Total L.S.C. 1415.26 -  
 E.W. 1.60 ft.

**PLAN**  
 Scale: 1 ch to an inch.

D. 2° 52'  
 S.V. 60 M.P.H.  
 R. 4755 chs.  
 S.E. .50" / ft.  
 A.O. 248.96  
 A.X. 2.16



**LONGITUDINAL SECTION**  
 Scales: Horiz. 3 chs Vert. 10 ft. to an inch.

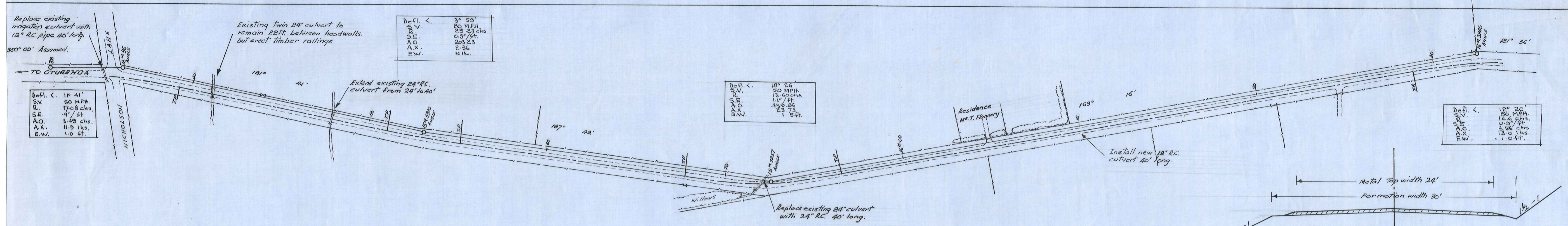
DISTRICT COUNCIL

IDABURN - OMAKAU M.H. 227.  
 14m. 24c. - 15m. 32c.

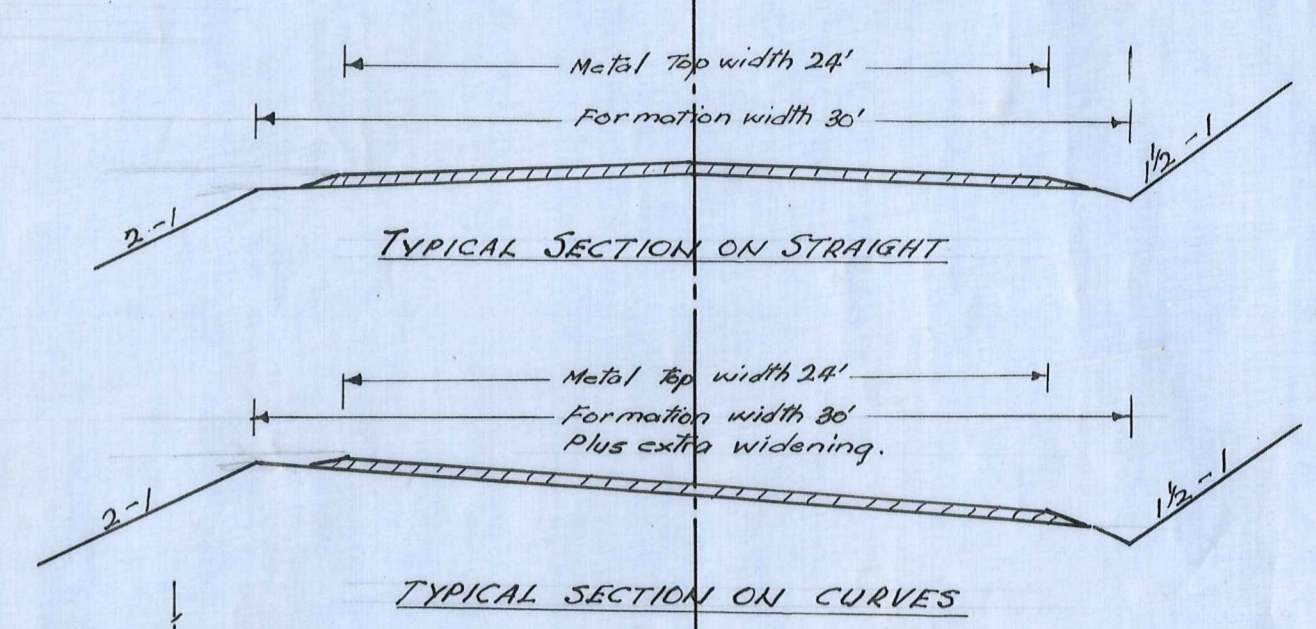
Approved: *H. H. Beck*  
 COUNTY ENGINEER 5/59

Surveyed by Sit. Wragge  
 Checked by ..  
 Traced by ..

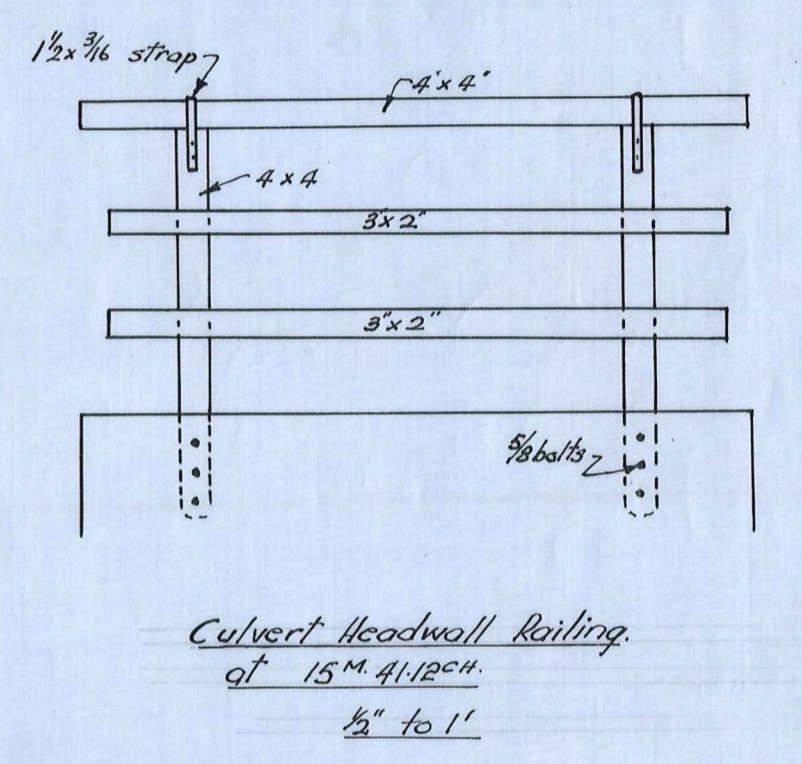
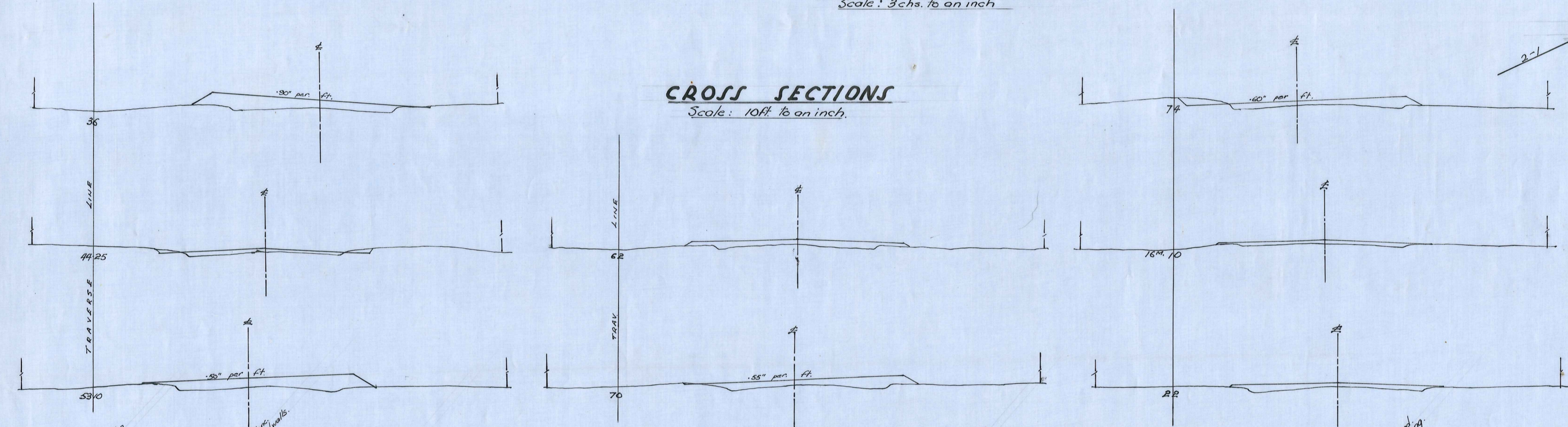
PLAN No 23/8



**PLAN**  
Scale: 3chs. to an inch



**CROSS SECTIONS**  
Scale: 10ft. to an inch.



STATION	NEW FORMATION LEVEL	EXISTING ROAD LEVEL	GRADES	ALIGNMENT
16+32	26.76	24.16	1.10	50 MPH. TRANS. RT.
34	24.46	24.72	25.60	
35	25.51	25.98	27.5"	
36	25.43	26.28	26.12	
37	24.27	24.65	26.53	
38	24.23	24.61	26.53	
40	24.23	25.14	26.31	
41/2	25.58	26.33	24.6"	
42	25.99	26.82	26.33	
44/25	26.61	25.88	26.34	
46	24.70	24.57	26.36	
48	23.88	26.05	26.87	
50	24.02	24.42	26.39	
52	24.19	25.73	26.41	
53/10	26.88	25.95	26.41	
54	24.63	25.67	26.52	
55/5	23.81	26.45	26.44	
56/25	24.65	26.45	26.44	
58	26.13	25.70	26.45	
60	24.31	26.00	26.65	
62	25.97	26.30	26.49	
64	24.41	26.89	26.51	
66	26.25	26.52	26.55	
68	24.22	26.42	26.63	
70	26.30	27.00	26.65	
72	26.78	27.37	27.68	
74	27.97	27.25	27.28	
76	28.13	27.97	27.62	
78	25.49	27.22	27.97	
80	27.22	27.20	26.41	
82	24.25	27.28	27.28	
84	26.60	29.23	29.45	
86	28.33	29.95	29.95	
88	28.35	30.30	30.23	
90	28.35	29.38	30.60	
92	28.33	30.40	30.77	
94	28.11	31.11	31.04	
96	31.72	31.24	31.31	
98	31.13	31.53	31.59	
100	31.49	31.98	31.65	
102	31.73	31.64	32.12	
104	32.34	32.15	32.19	
106	32.81	32.63	32.75	
108	32.77	33.15	33.15	
110	33.63	33.82	33.82	
112	33.72	34.72	34.72	

EARTHWORKS. As this section of road requires overall build-up, all materials must be obtained from suitable borrow.

3080 cu. yds.

650 cu. yds.

380 cu. yds.

GRADES: 100ft. per ch., .085 per ch., .26 per ch., .186 per ch., Existing grade

ALIGNMENT: 50 MPH. TRANS. RT., STRAIGHT, 50 MPH. LEFT, STRAIGHT, 50 MPH. LEFT, STRAIGHT, 50 MPH. RT.

**LONGITUDINAL SECTION**  
Scales: Vertical 10ft. Horiz: 3chs. to an inch.

VINCENT COUNTY COUNCIL

IDABURN - OMAKAU M.H. 227.  
15<sup>m</sup>. 32<sup>c</sup>. - 16<sup>m</sup>. 32.45<sup>c</sup>.

Approved by:  
*H. H. Beck*  
COUNTY ENGINEER 5/59

Surveyed by S. Duggan, June 1959  
Drawn . . . . .  
Calcs. . . . .  
Checked . . . . .  
Traced . . . . .

PLAN No 23/8