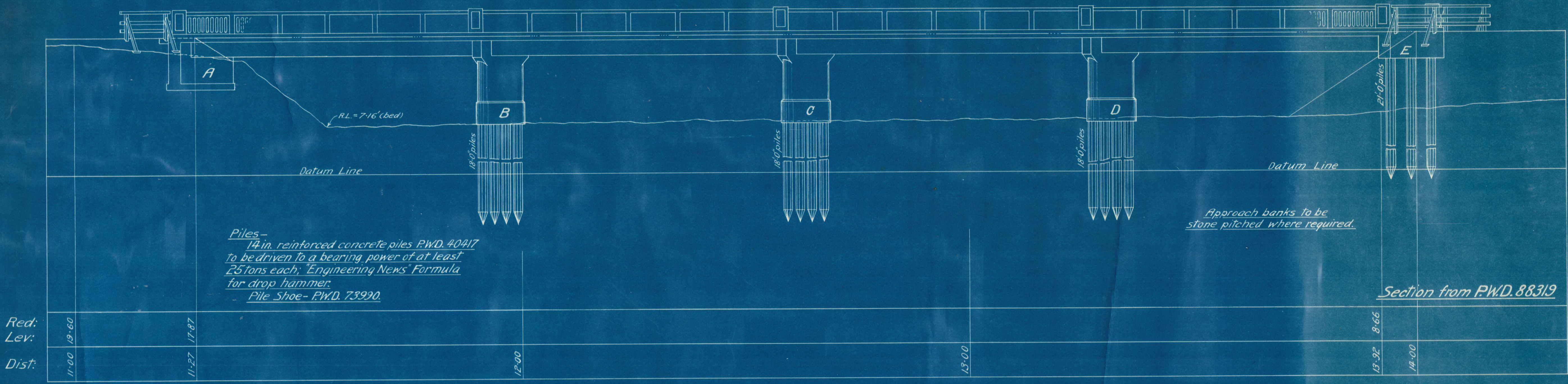
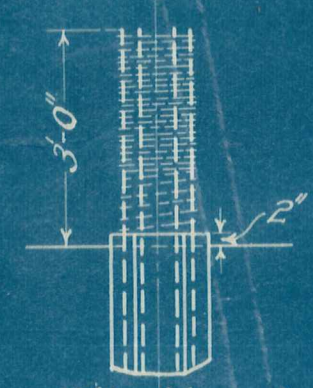


*Approx. Quantities.*  
 Reinforced Concrete  
 Deck, Kerbs, Girders & Trans. Beams 112-0  
 Handrails & Posts 8-3  
 Handrail Panels 4-0  
 Piers, Abutments & Buffer Blocks 37-3  
 Total 161-6 Cub. Yds.  
 Reinforcing Steel 16-1 Tons.  
 (Excluding Piles)



Red:  
Lev:  
Dist:

11-00	12-60	11-27	17-87	12-00	15-00	15-92	18-66	18-00
-------	-------	-------	-------	-------	-------	-------	-------	-------

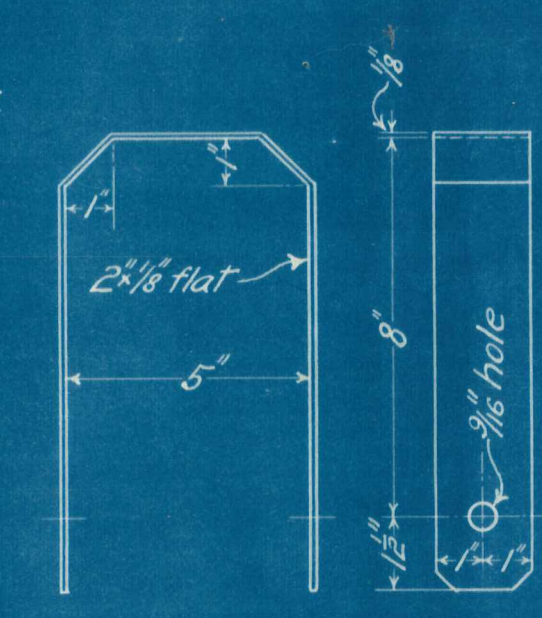
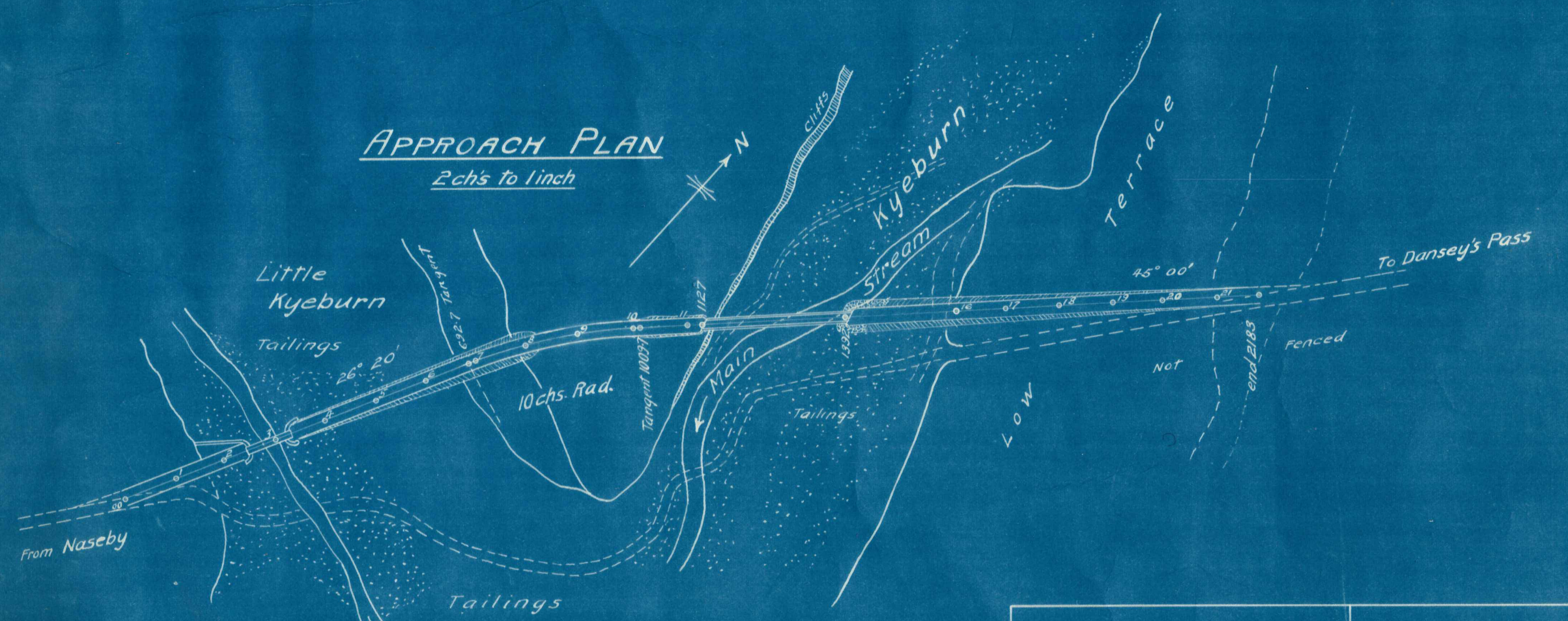
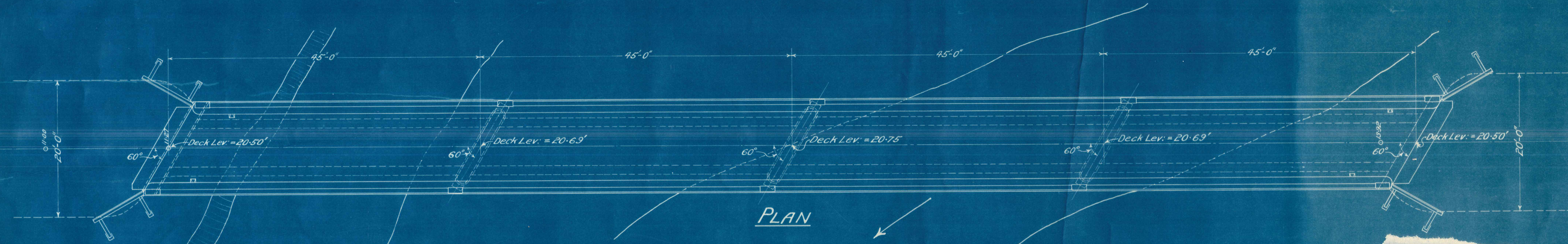


Concrete in pile heads to be completely cut away for the distance shown. The vertical winding can either be tightly reworked and tied round vertical pile rods, or it can be cut off two or three turns above solid concrete and the end tightly twisted round a pile rod.

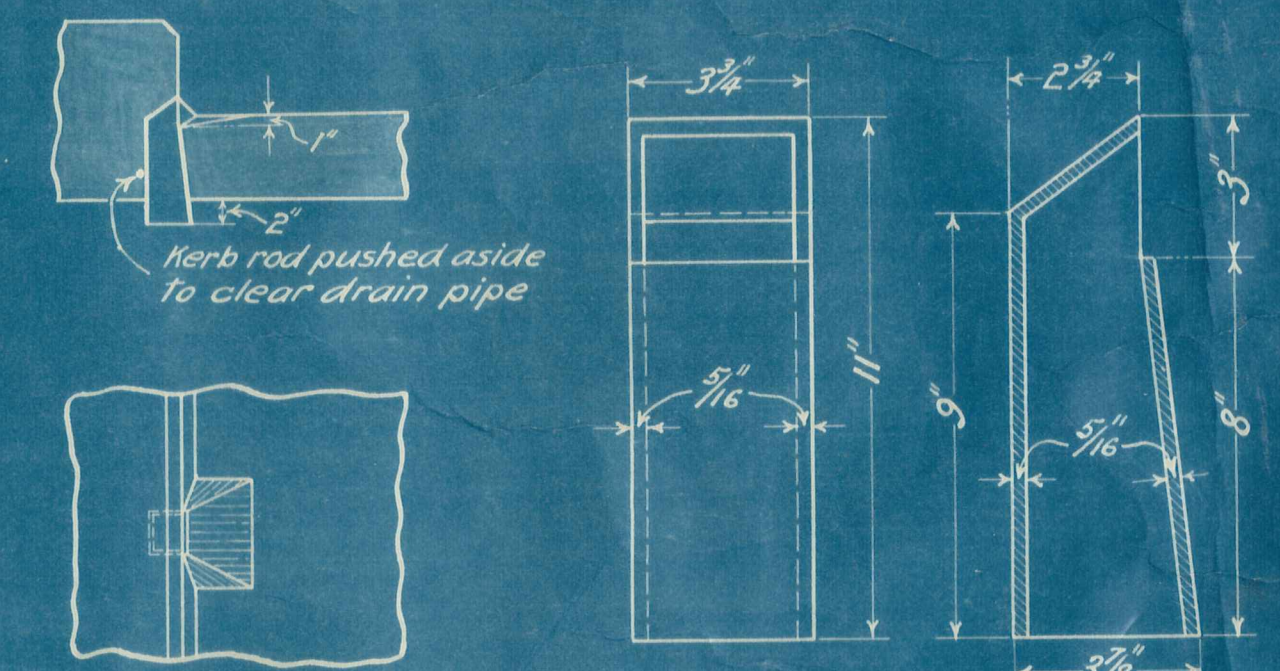
LONGITUDINAL SECTION OF SITE & ELEVATION OF BRIDGE

14" Oct. Reinf. Conc. Piles

Pt	Dia	No	Length before bending	Cut from	Length
Pier B	14"	32	17'-4"	32	17'-6"
" C	"	32	17'-4"	32	17'-6"
" D	"	32	17'-4"	32	17'-6"
Abut. E	"	24	20'-4"	24	20'-6"
Pier B	N86g	4	370'-0"	4	low coils
" C	"	4	370'-0"	4	low coils
" D	"	4	370'-0"	4	low coils
Abut. E	"	3	420'-0"	3	low coils



POST STRAP  
3 in. = 1 ft.



CAST IRON DRAIN PIPES FOR ROADWAY  
 Approx. Weight = 10-75 lbs. each  
 Four required. One on each side of roadway approximately 6'-6" from each end of bridge  
 Scales - 3/4" & 3" = 1'

DESIGNED BY	C. H. G. G. G.
CHECKED BY	J. P. G. G.
APPROVED BY	J. P. G. G.

Date	Amendment	Signature



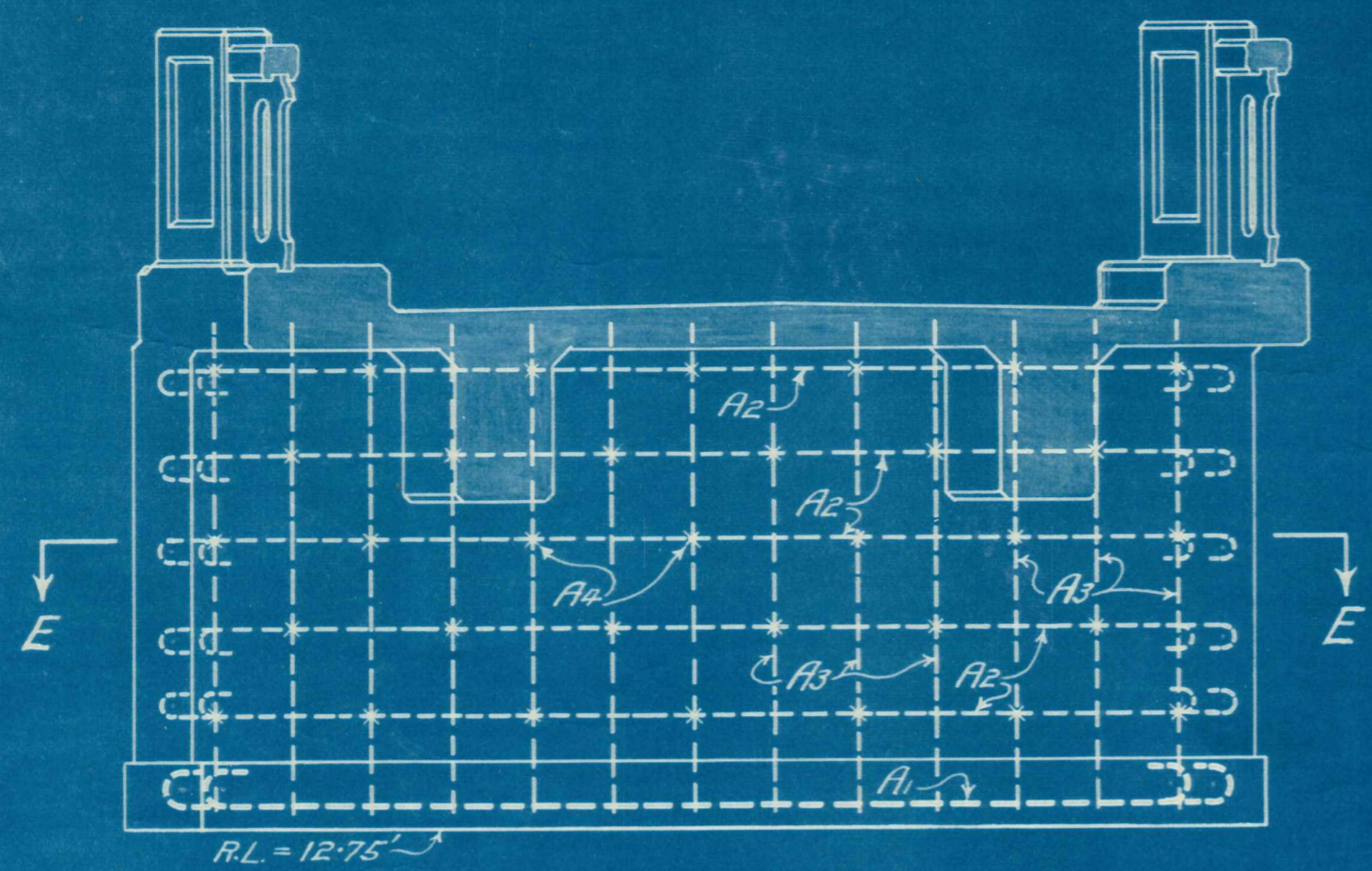
**KYEBURN BRIDGE**  
 NASEBY—DANSEY'S PASS ROAD  
 Scale - 1/8 in. = 1 ft. (unless shown otherwise)

**P.W.D. 89183**  
**DRAWING NO. 1**  
**SHEET NO. 1**

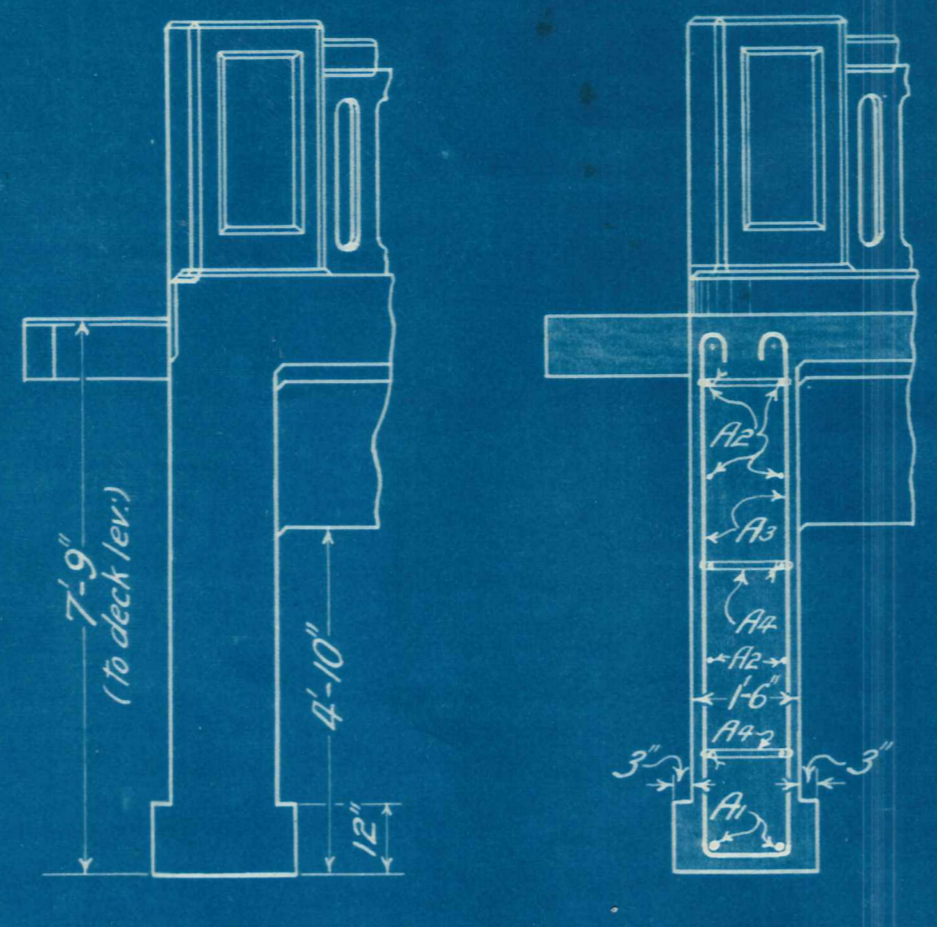
TRACING No 6541





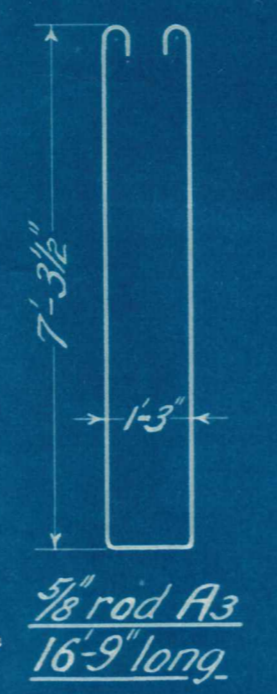


Elevation



Side Elev<sup>n</sup>

Section DD



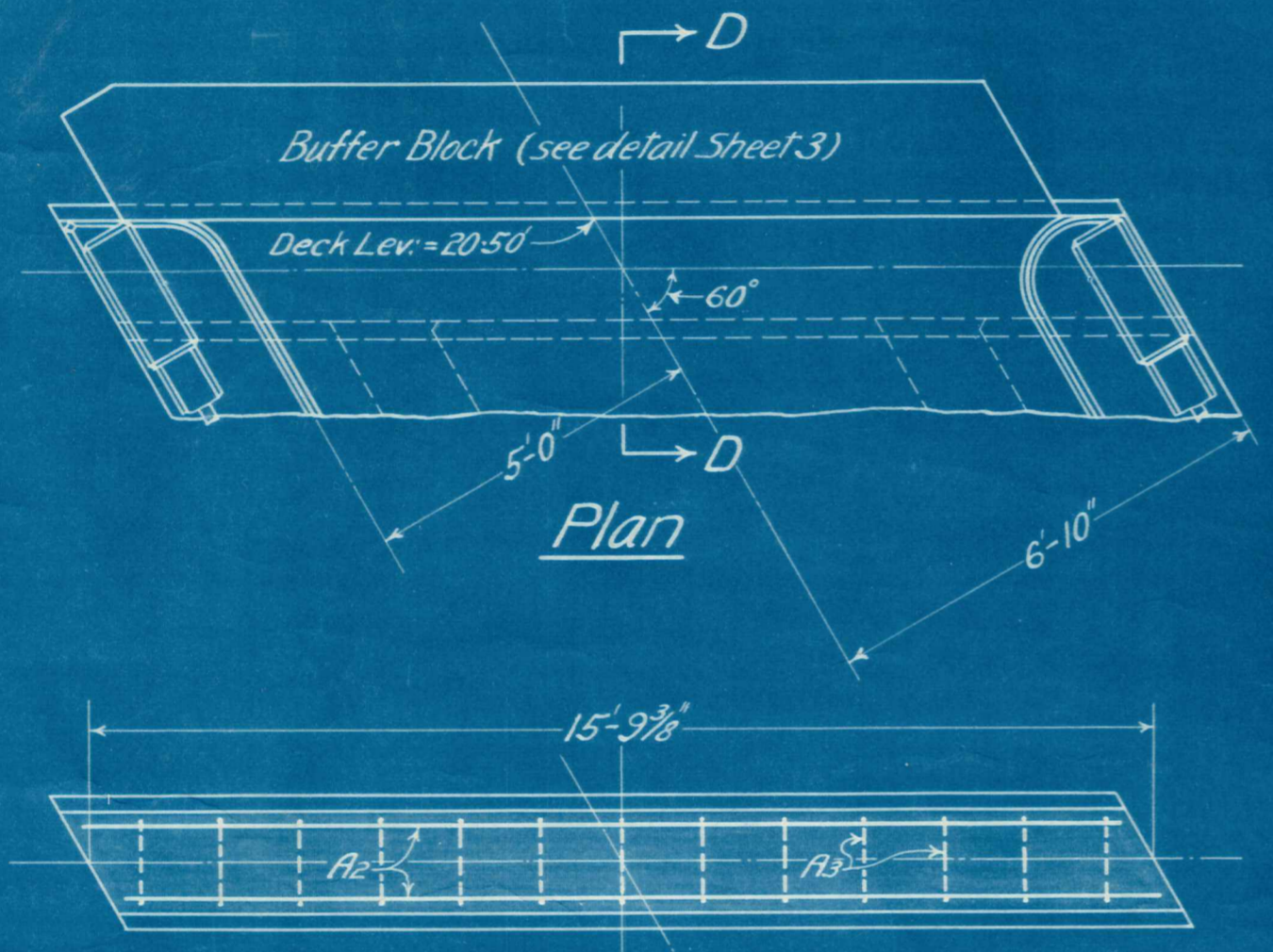
3/8 rod A3  
16'-9" long

LIST OF REINFORCING RODS FOR BRIDGE (Excluding Pile Reinf.)

Designations-		A (abutments) B (buffer blocks) G (girders) H (handrailing) P (piers) S (deck & kerbs) T (transverse beams)																		
Desig <sup>n</sup>	Dia	N <sup>o</sup>	Length before bending	Cut from N <sup>o</sup>	Length	Remarks	Desig <sup>n</sup>	Dia	N <sup>o</sup>	Length before bending	Cut from N <sup>o</sup>	Length	Remarks	Desig <sup>n</sup>	Dia	N <sup>o</sup>	Length before bending	Cut from N <sup>o</sup>	Length	Remarks
A1	1"	4	17'-0"	4	17'-0"	Straight	H1	1/2"	80	9'-6"	20	19'-0"	Bent	P1	3/8"	33	12'-6"	33	12'-6"	Bent
A2	3/8"	16	16'-6"	16	16'-6"	"	H2	1/2"	40	10'-0"	20	20'-0"	"	P2	3/8"	12	9'-9"	6	19'-6"	"
A3	3/8"	13	16'-9"	13	16'-9"	Bent	H3	1/2"	12	4'-11"	4	14'-9"	* Straight	P3	3/8"	12	7'-3"	6	18'-6"	"
A4	N <sup>o</sup> 6g	55	3'-3"	179	lin. ft.	"	H4	N <sup>o</sup> 8g	160	2'-6"	400	lin. ft.	"	P4	1/4"	18	11'-0"	9	22'-0"	Straight
A5	3/8"	13	9'-0"	7	18'-0"	"	H5	N <sup>o</sup> 8g	48	3'-3"	156	"	"	P5	N <sup>o</sup> 6g	117	3'-3"	381	lin. ft.	Bent
B1	3/8"	8	14'-6"	8	14'-6"	Straight	H6	N <sup>o</sup> 8g	16	5'-6"	88	"	"	S1	1/4"	134	16'-0"	134	16'-0"	Bent
B2	3/8"	4	13'-9"	4	13'-9"	"	H7	3/8"	64	18'-0"	64	18'-0"	Straight	S2	1/4"	134	13'-9"	134	13'-9"	Straight
B3	N <sup>o</sup> 6g	34	5'-0"	170	lin. ft.	Bent	H8	3/8"	16	12'-9"	16	12'-9"	"	S3	1/4"	136	16'-3"	136	16'-3"	Cranked
G1	1 1/4"	16	29'-9"	16	29'-9"	Cranked	H9	3/8"	16	13'-3"	16	13'-3"	"	S4	1/4"	100	12'-6"	100	12'-6"	Straight
G2	1 1/4"	16	36'-9"	16	36'-9"	"	H10	N <sup>o</sup> 8g	336	2'-0"	672	lin. ft.	Bent	S5	1/4"	200	19'-0"	200	19'-0"	"
G3	1 1/4"	16	43'-3"	16	43'-3"	"	H11	3/8"	480	2'-9"	80	16'-6"	* Straight	S6	3/8"	240	5'-9"	80	17'-3"	Bent
G4	1 1/4"	16	48'-3"	16	48'-3"	"	H12	3/8"	96	6'-4 1/2"	48	12'-9"	"	T1	1"	8	13'-6"	8	13'-6"	Bent
G5	1 1/4"	32	47'-0"	32	47'-0"	Straight	H13	3/8"	96	6'-7"	48	13'-3"	"	T2	1/2"	8	16'-0"	8	16'-0"	Straight
G6	1 1/4"	480	6'-10"	160	20'-6"	Bent	P6	3/8"	36	15'-6"	36	15'-6"	"	T3	3/8"	36	5'-5"	12	16'-6"	Bent
G7	1 1/4"	128	1'-0"	4	32'-0"	* Straight	P7	1"	6	18'-0"	6	18'-0"	Bent							

\* not hooked \* hooked one end only (see Sheet 2)  
 Note- One 1/2cwt coil of N<sup>o</sup>6g, ordered for stirrups and ties to be supplemented by surplus from pile winding.

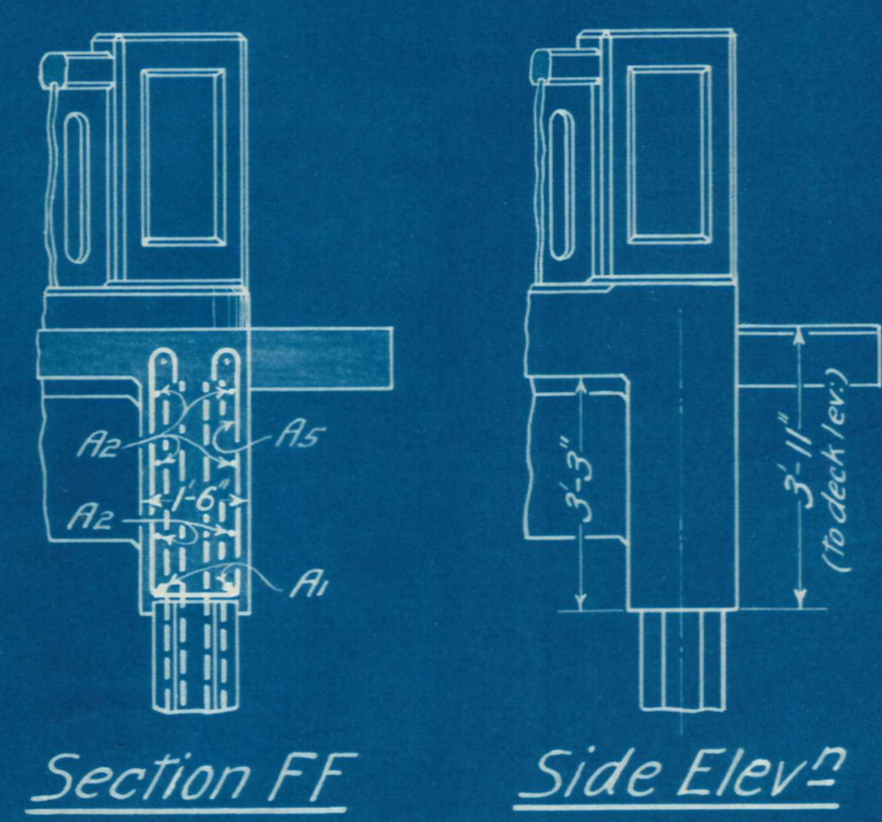
ABUTMENT A



Section EE

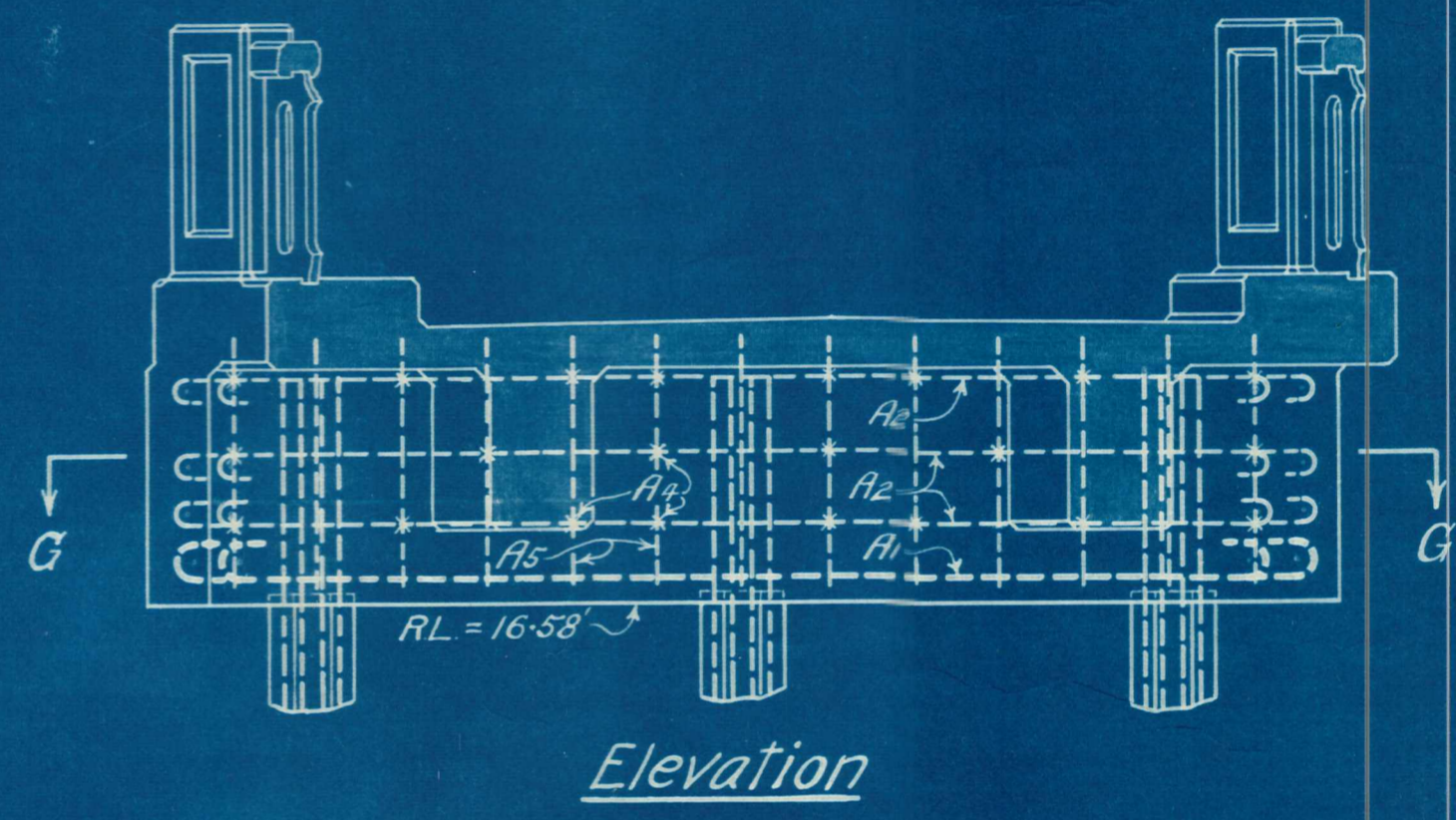
1 1/4" Oct. Reinf<sup>d</sup> Conc. Piles

At	Dia.	N <sup>o</sup>	Length before bending	Cut from N <sup>o</sup>	Length
Pier B	3/4"	32	17'-4"	32	17'-6"
" C	"	32	17'-4"	32	17'-6"
" D	"	32	17'-4"	32	17'-6"
Abut E	"	24	20'-4"	24	20'-6"
Pier B	N <sup>o</sup> 6g	4	370'-0"		
" C	"	4	370'-0"	4	1 cwt coils
" D	"	4	370'-0"		
Abut E	"	3	420'-0"	3	1/2 cwt coils

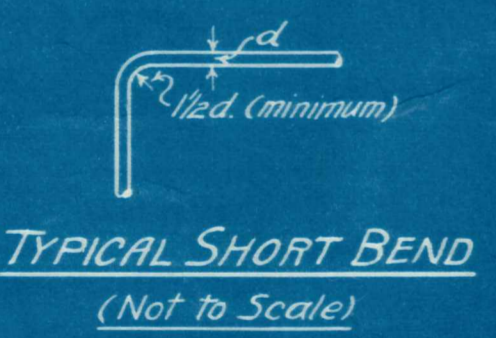


Section FF

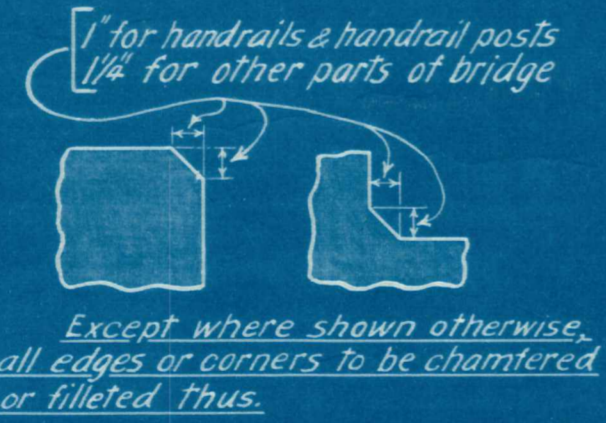
Side Elev<sup>n</sup>



Elevation

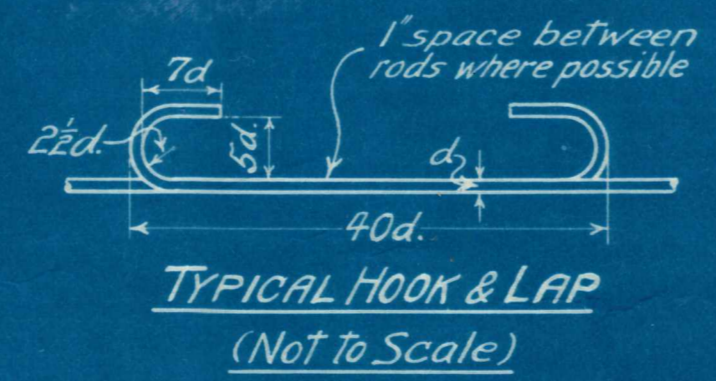


TYPICAL SHORT BEND  
(Not to Scale)



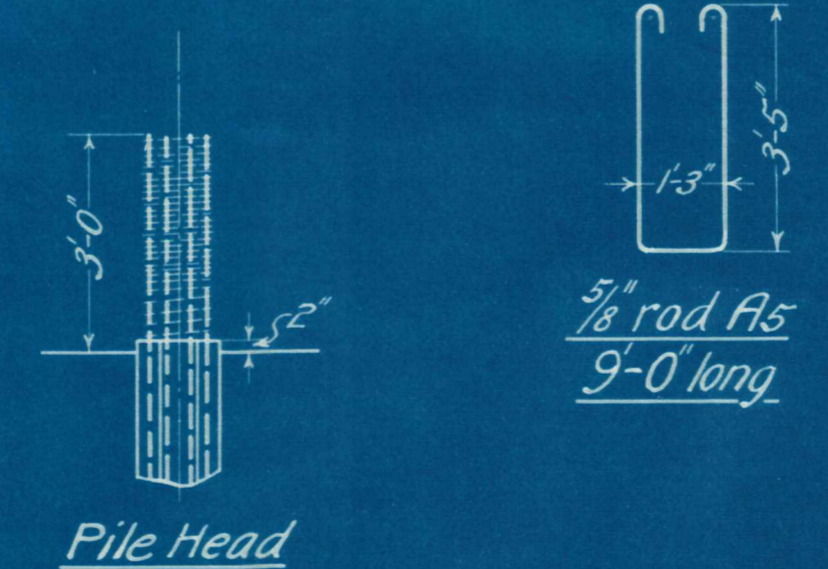
TYPICAL CHAMFER & FILLET  
Not to Scale

Note- Unless shown otherwise, details of reinforcing rods show the dimensions outside to outside of rods.



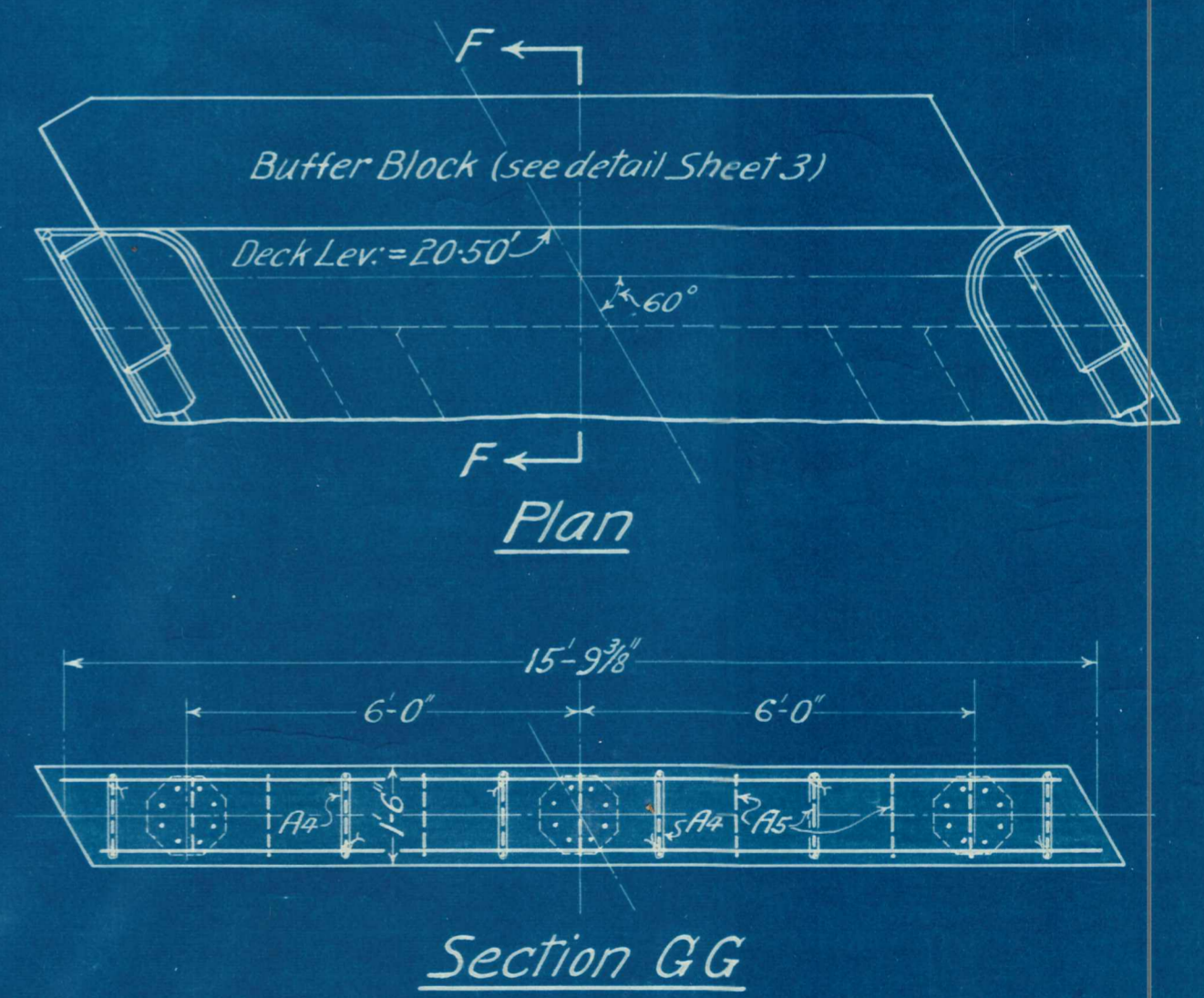
TYPICAL HOOK & LAP  
(Not to Scale)

ABUTMENT E



Pile Head

Concrete in pile heads to be completely cut away for the distance shown. The helical winding can either be tightly reworked and tied round vertical pile rods, or it can be cut off two or three turns above solid concrete and the end tightly twisted round a pile rod.



Plan

Section GG

DATE	BY	SCALE
21.3.35	CH. Cassell	1/4" = 1ft.
21.3.35	P. G. Lane	1/4" = 1ft.
1.7.35	W. R. Lamborn	1/4" = 1ft.

Date	Amendment	Signature



KYEBURN BRIDGE  
 NASEBY — DANSEY'S PASS ROAD

Scales - 3/8 in. & 3/4 in. = 1ft. (unless shown otherwise).

P.W.D. 89183  
 DRAWING NO. 1  
 SHEET NO. 4

TRACING NO. 6541



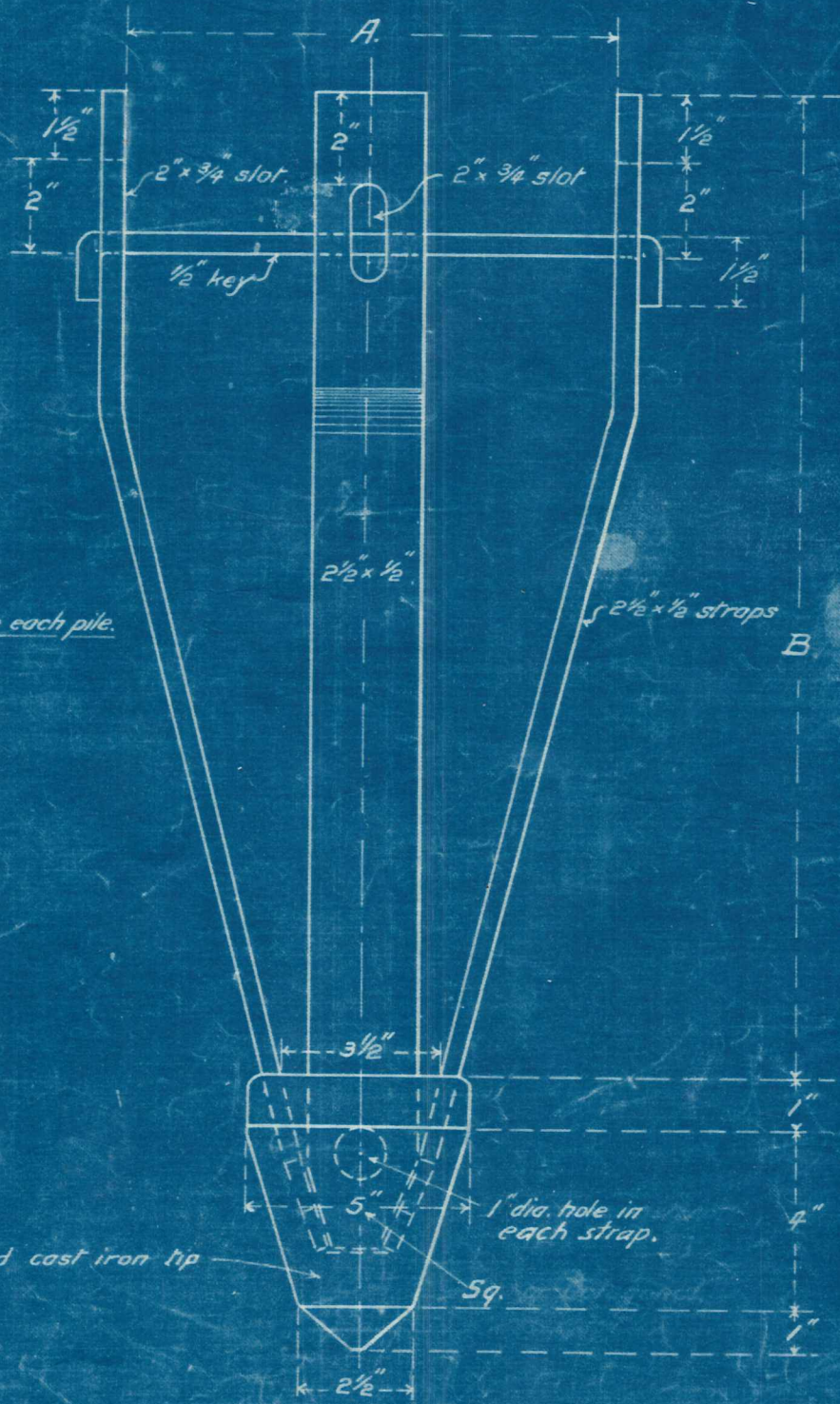
DRAWING NO. 2

PILE SHOE. SHEET NO. 2

FOR P.W.D. STANDARD OCTAGONAL CONCRETE PILES.  
CHILLED CAST IRON POINT.

	14" PILE.	16" PILE.	18" PILE.
DIMENS. A.	11"	13"	15"
DIMENS. B.	1' - 9"	2' - 0"	2' - 3 1/2"

ITEM.	14"	16"	18"
Strap.	34.84 lbs.	39.09 lbs.	49.94 lbs.
Keys.	1.67 "	1.89 "	2.12 "
Point.	17.51 "	17.51 "	17.51 "
TOTAL.	54.02 "	58.49 "	69.57 "



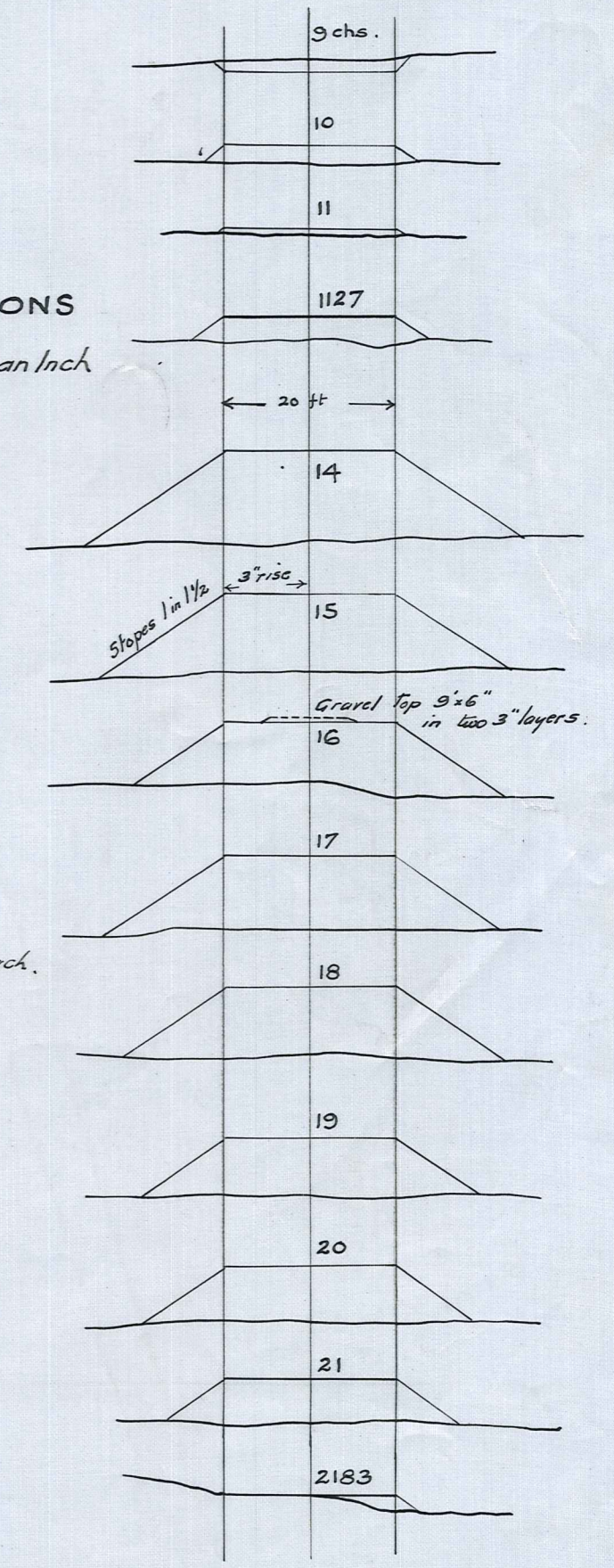
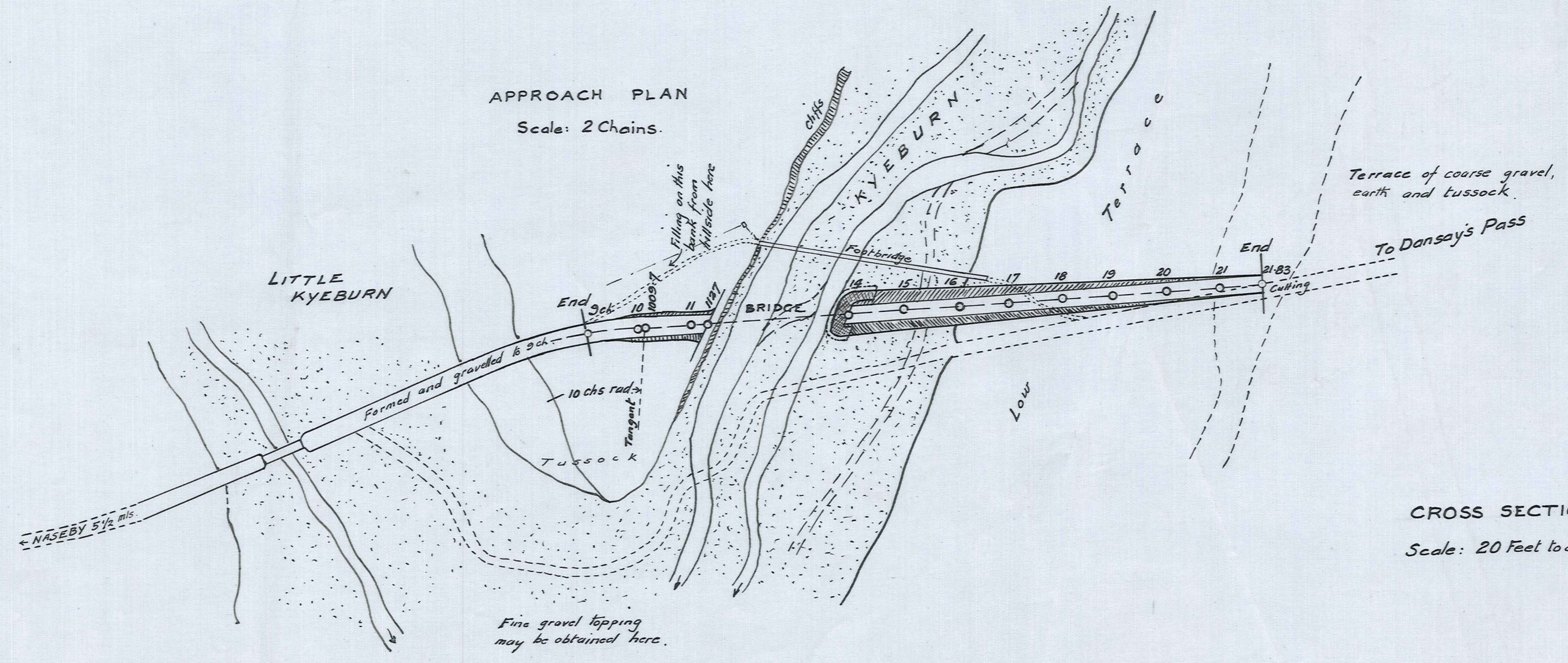
Note: - 2 keys to each pile.

Amended 7-9-32.  
 dimension 3 3/4" at lower end of  
 straps altered to 3 1/2". C.M.H.

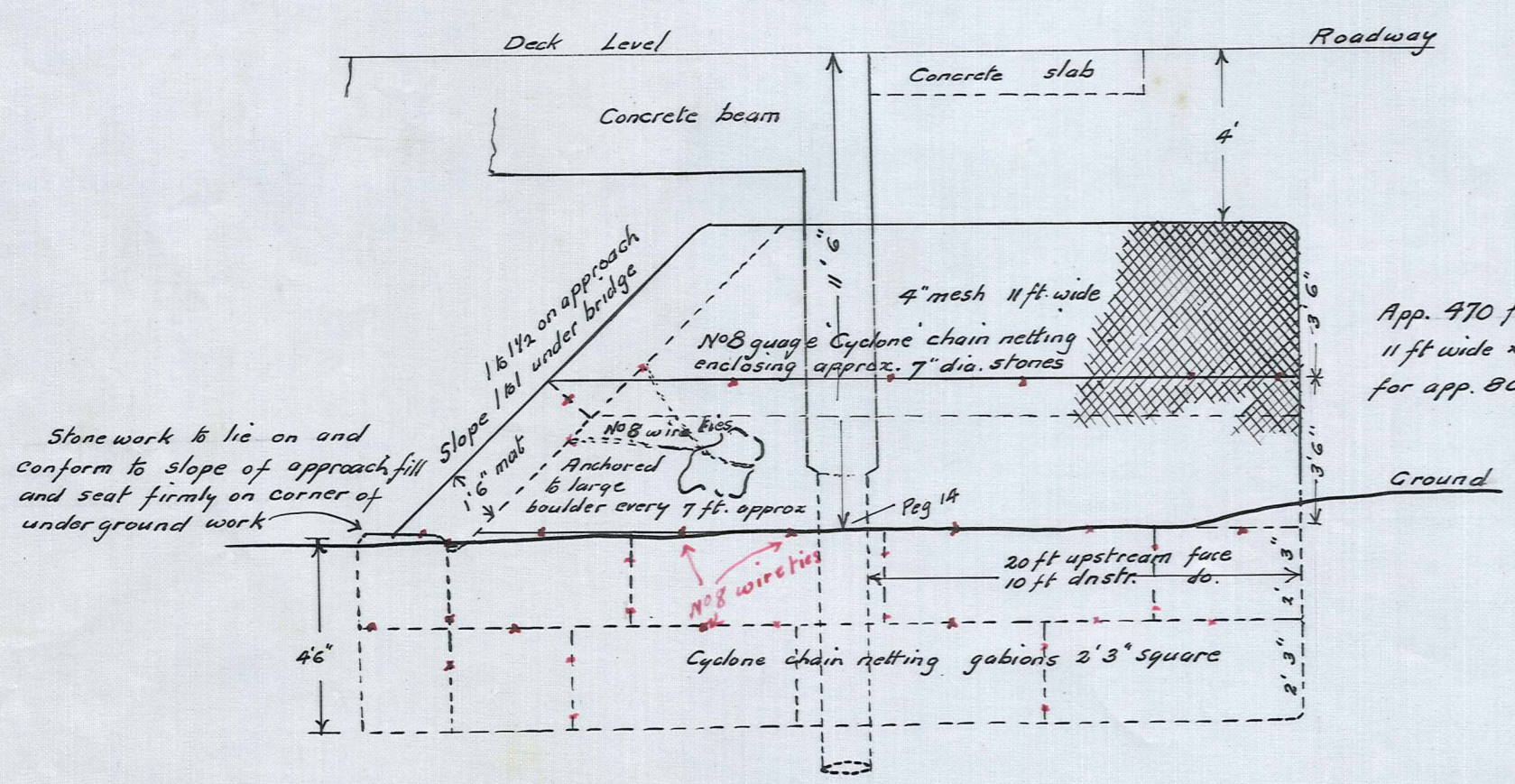
Scale: - 3 ins. = 1 ft.

P.W.D. 73990.

NASEBY TO DANSAY'S PASS  
 KYEBURN BRIDGE  
 YOUNG'S CROSSING  
 CONT. NO. 251  
 APPROACHES AND E. ABUTMENT.  
 MANIOTOTO COUNTY



STONEMWORK AT EAST ABUT. ONLY  
 Scale: 4 Feet to an Inch



APPROACHES  
 LONGITUDINAL SECTION

Dist. chs.	9	10	11	14	15	16	17	18	19	20	21	2183
Formed	11.52.22											
Cutting	1.43											
Filling												
Formation	19.6.9	20.4.5	20.9.0	20.5.0	20.5.0	20.5.0	20.5.0	20.5.0	20.5.0	20.5.0	20.5.0	20.5.0
Ground	21.12	19.43	18.43	19.60	20.50	20.50	20.50	20.50	20.50	20.50	20.50	20.50

Total Filling 5060 cub. yds.  
 Total Gravel 111 cub. yds.

Scales: Horizontal 2 Chains to an Inch  
 Vertical 20 Feet to an Inch

M.C.C. 112

R.J. Black.  
 County Engr.

112