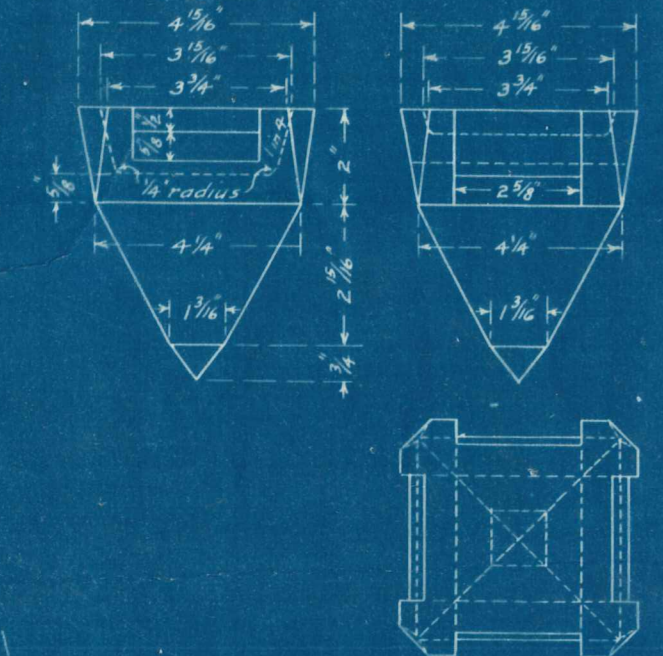


GENERAL ELEVATION OF BRIDGE AND SECTION OF SITE

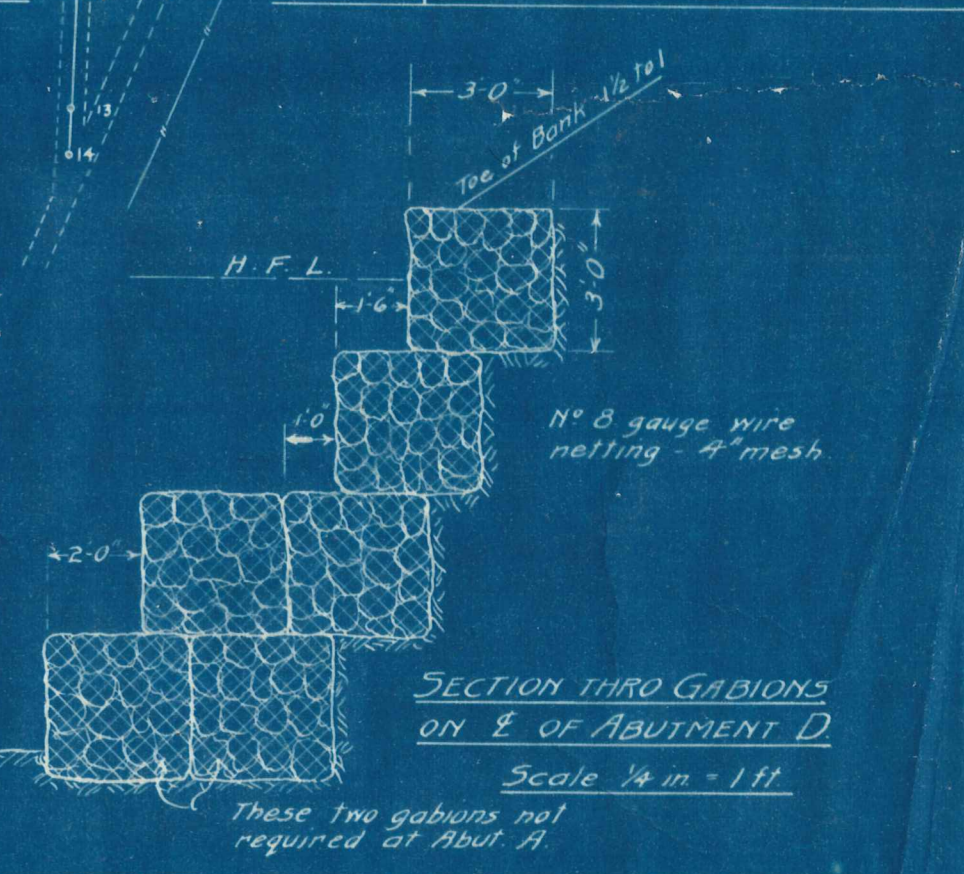
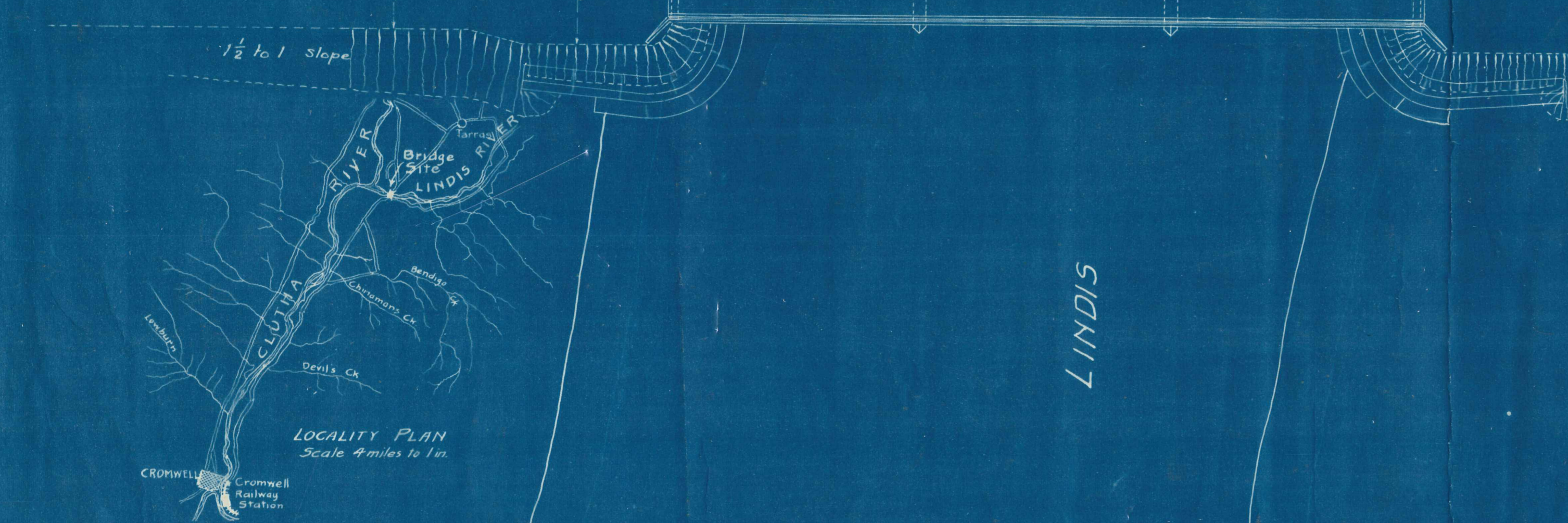
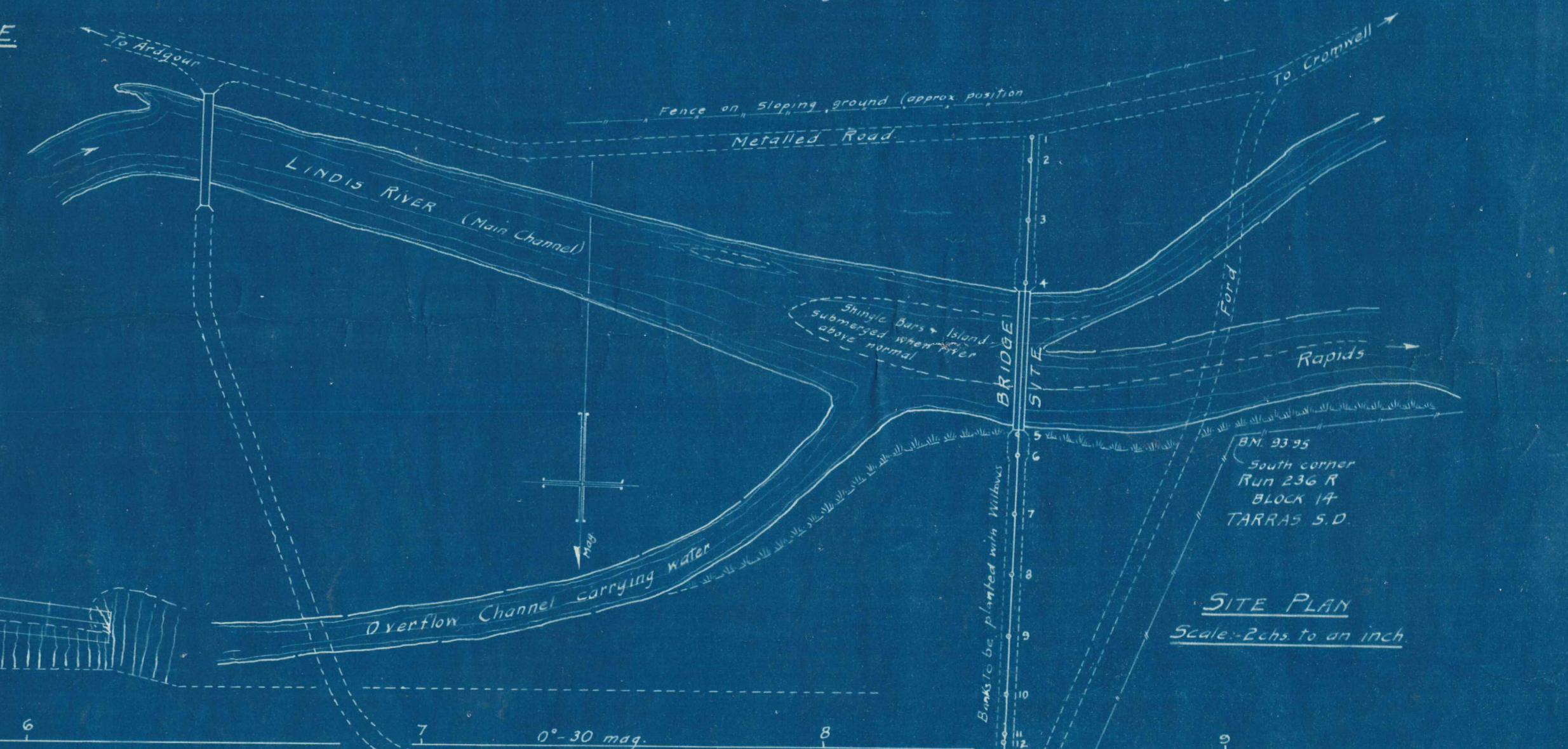


Old Gravel Pit 6'0" deep

Mud & shingle flats covered with tussocks

RIVER

Ford 3/8 chains down stream from E. of Bridge



VICKERMAN & LANCASTER
WELLINGTON

<p>LINDIS RIVER BRIDGE LOWER CROSSING SCALE - 20 FT. TO AN INCH. EXCEPT WHERE SHOWN OTHERWISE.</p>		<p>Drawn by L.G.G. Traced by L.G.G. 11.2.27</p>
REFERENCE	DRAWING No.	
	685	

Copy of P.W.D. 69391

