

MANIOTOTO COUNTY COUNCIL
Johnson
 COUNTY CLERK

Scale: 1" to 50M.

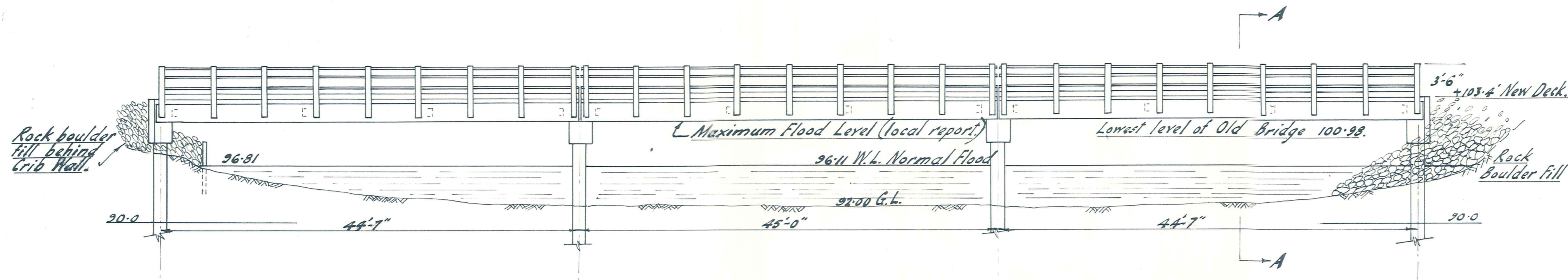
MANIOTOTO COUNTY COUNCIL.

LOGANBURN FORD BRIDGE.
 LOCALITY AND SITE PLAN.

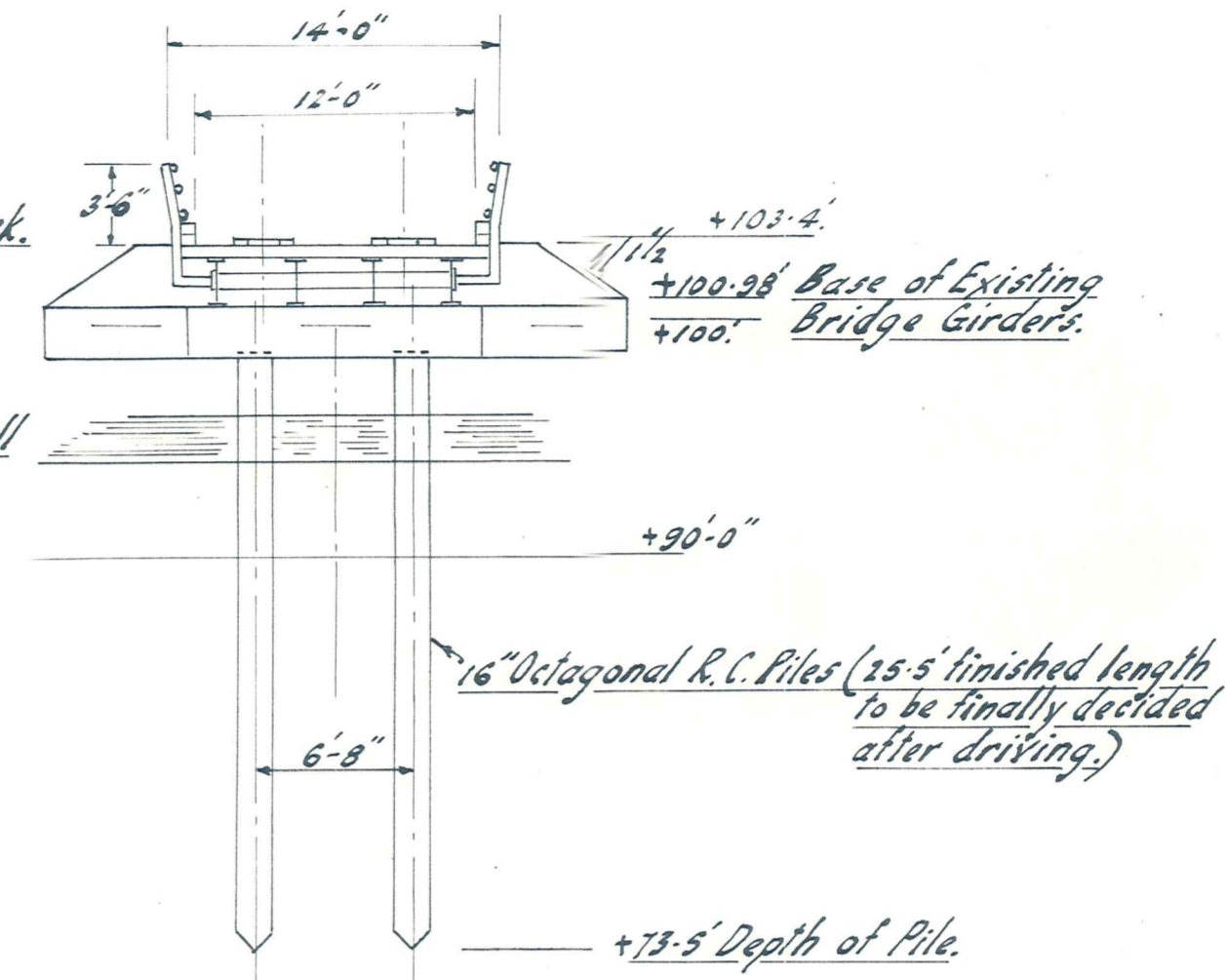
AMENDMENTS				NAME	DATE
No.	By	Date	Description		
				R. McGeorge	Oct '65
				"	"
				"	"
				"	"
				"	"
				"	"
				"	"
				"	"
				"	"

DUFFILL, WATTS & KING
 CONSULTING CIVIL & STRUCTURAL ENGINEERS
 DUNEDIN & INVERCARGILL N.Z.

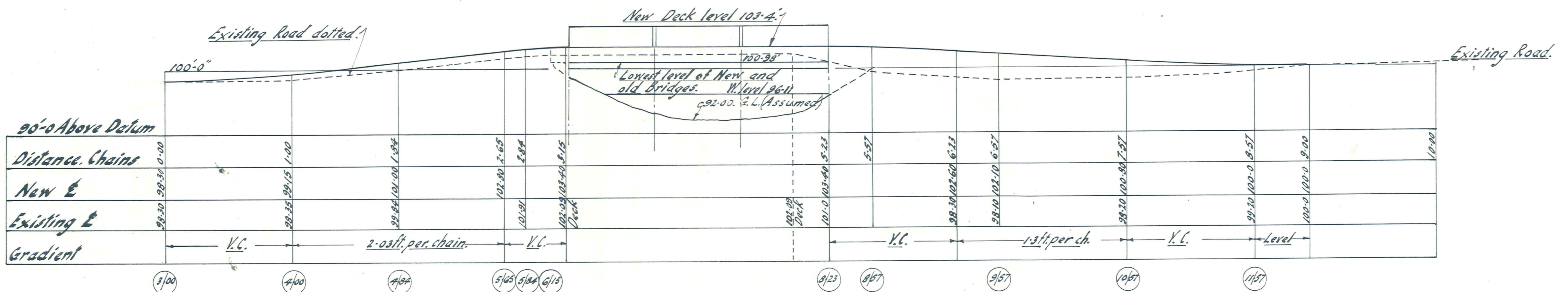
File 6/73
 L.Bk. 185
 F.Bk.
 JOB No. 4579/1
 Sheet of Sheets



ELEVATION OF BRIDGE
Scale: 1/8" = 1'-0"



CROSS SECTION ON A-A.



LONGITUDINAL SECTION ON NEW ROAD E.

Scales: Horizontal, 1" = 90 Links.
Vertical, 1" = 10'-0"

MANIOTOTO COUNTY COUNCIL
[Signature]
COUNTY CLERK

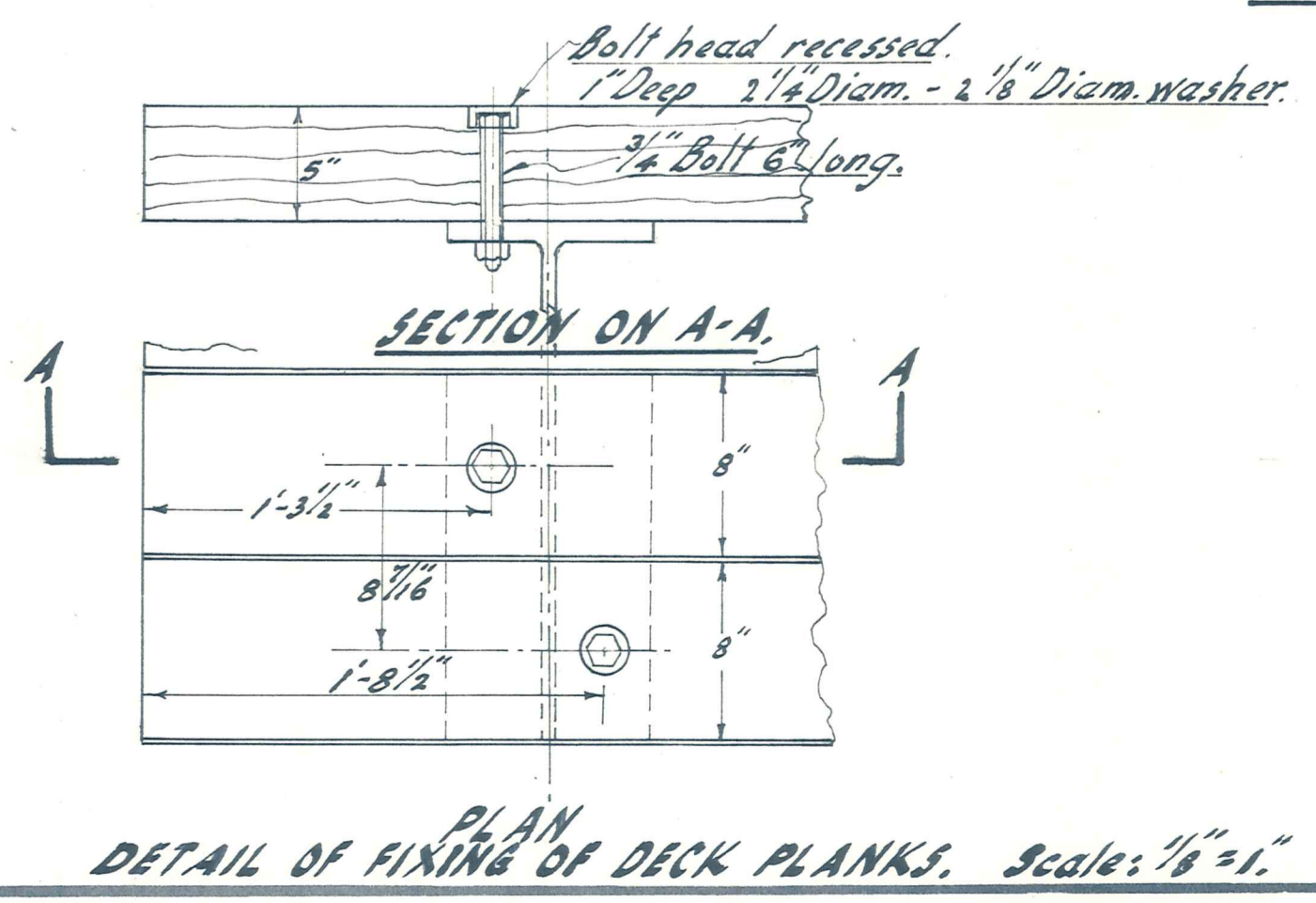
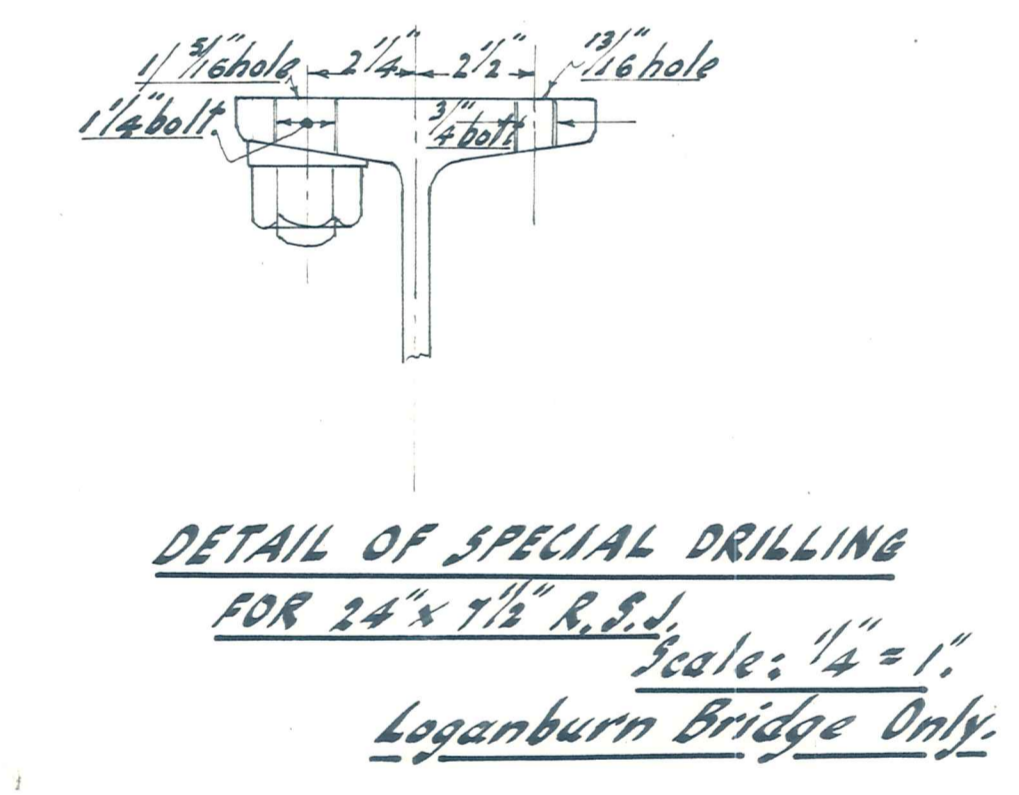
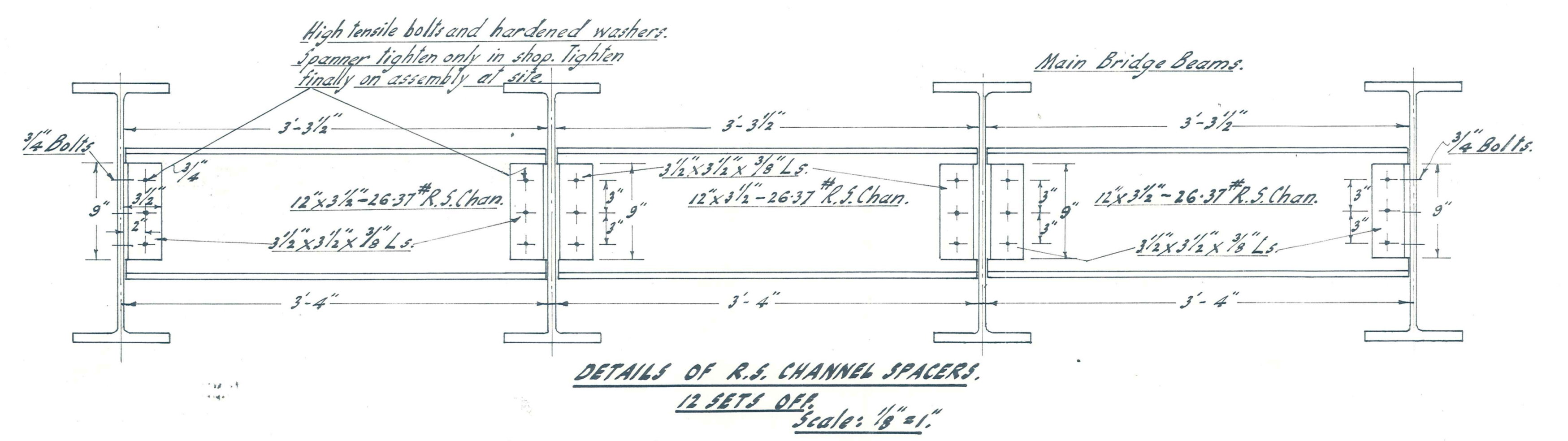
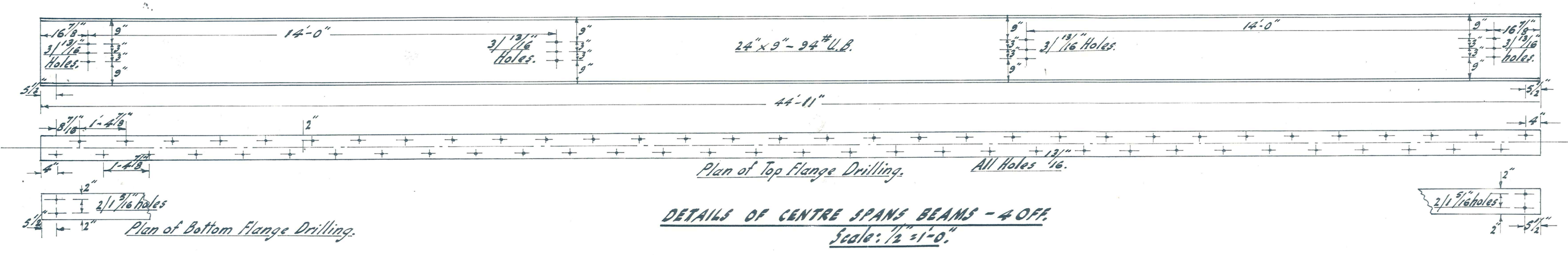
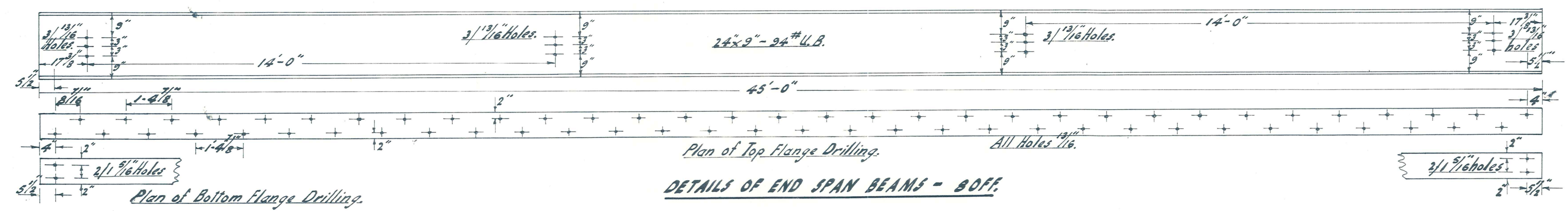
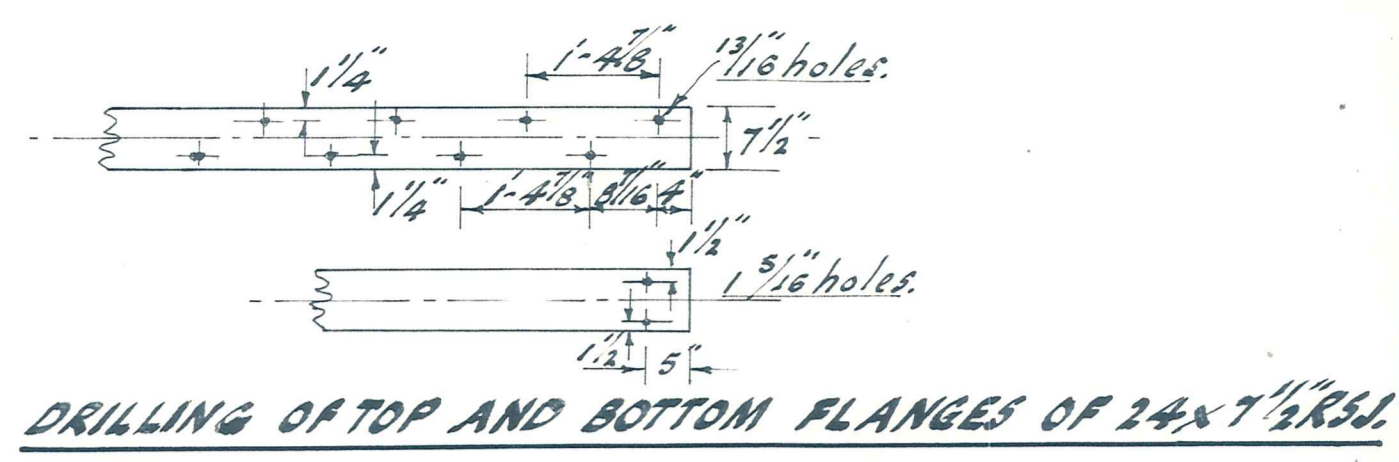
MANIOTOTO COUNTY COUNCIL.

LOGANBURN FORD BRIDGE
GENERAL ARRANGEMENT AND APPROACHES.

AMENDMENTS					NAME	DATE
No.	By	Date	Description	Apprd.		
					R. W. George	Dec. 1966
					S. J. Harrison	Jan. 1966
					K. Atherton	Nov. 1965
						Feb. 66

DUFFILL, WATTS & KING
CONSULTING CIVIL & STRUCTURAL ENGINEERS
DUNEDIN & INVERCARGILL N.Z.

File
JOB No. 4579/2
L. Bk.
F. Bk.
Sheet of Sheets



Note: The above details are per bridge of 3 spans. Loganburn Ford Bridge to use R.S.I's. Styx (Paerau) Bridge to use U.B.'s.

Note: Handrail details as per 4879/4 for both bridges.

MANIOTOTO COUNTY COUNCIL
 COUNTY CLERK
 Scales as shown.

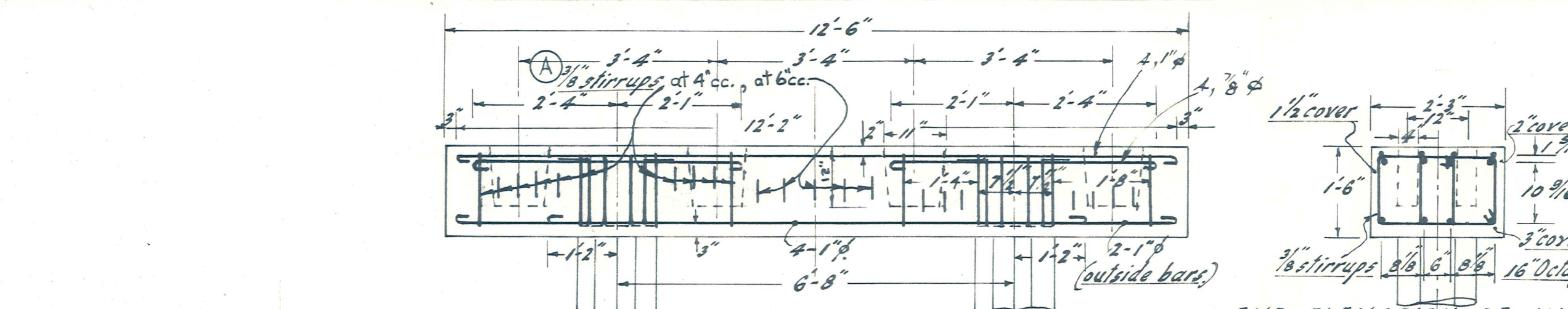
MANIOTOTO COUNTY COUNCIL.

LOGANBURN AND STYX BRIDGES. (PAERAU.)

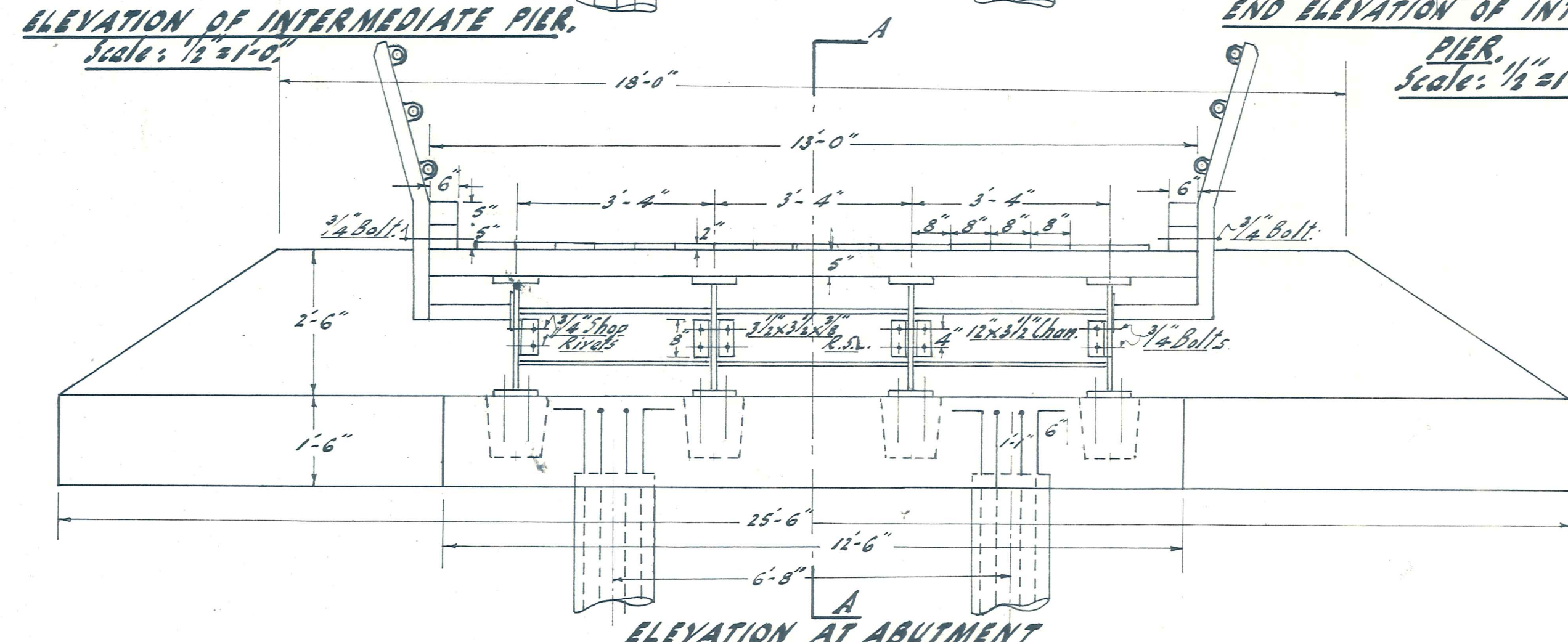
AMENDMENTS					NAME	DATE
No.	By	Date	Description	Apprd	Surveyed	
					S. J. Harrison	Feb 1966
					R. Allwarden	" "

DUFFILL, WATTS & KING
 CONSULTING CIVIL & STRUCTURAL ENGINEERS
 DUNEDIN & INVERCARGILL N.Z.

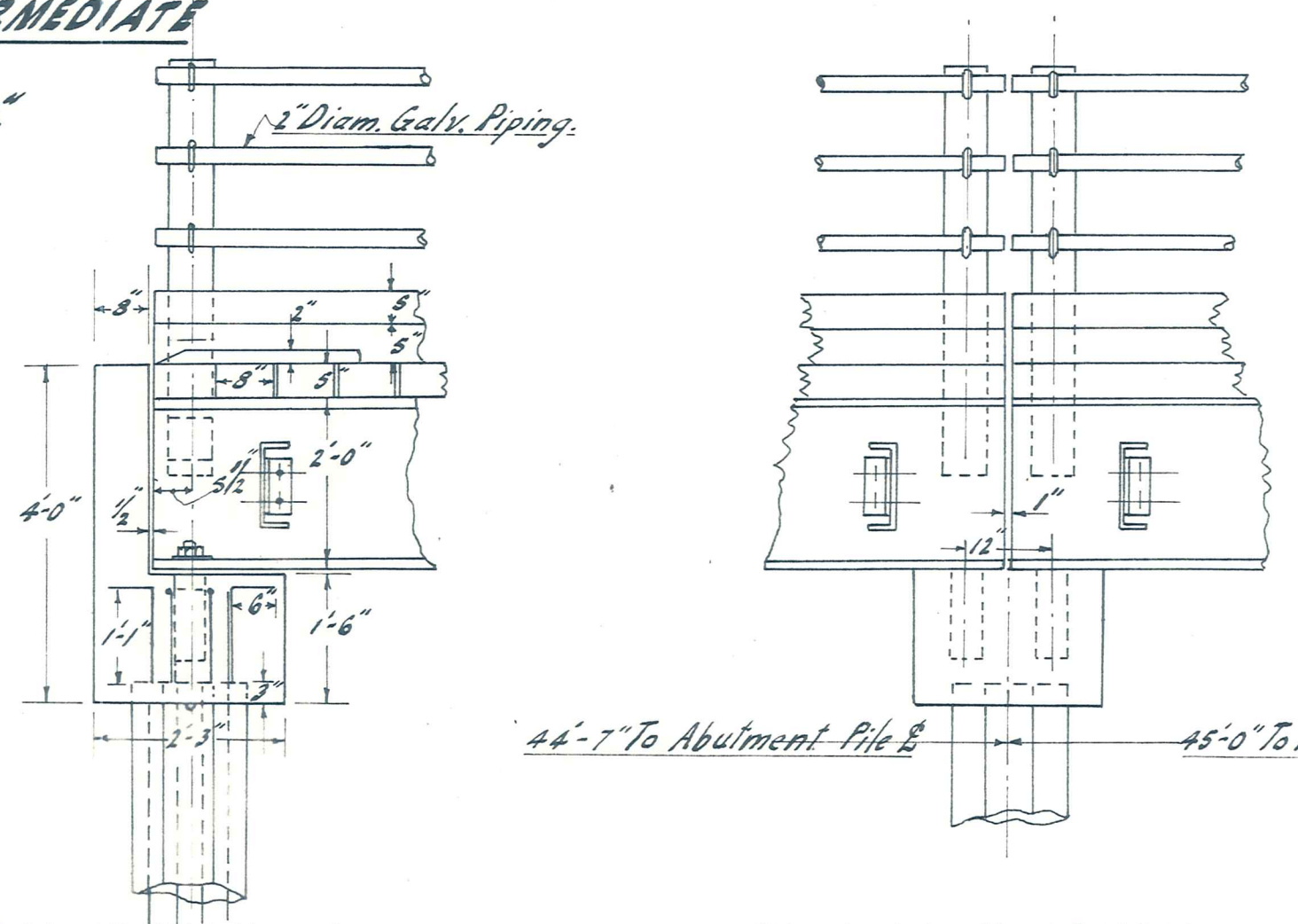
File No. JOB No.
 L. Bk. 4579/3
 F. Bk.
 Sheet of Sheets



END ELEVATION OF INTERMEDIATE PIER.
Scale: 1/2" = 1'-0"

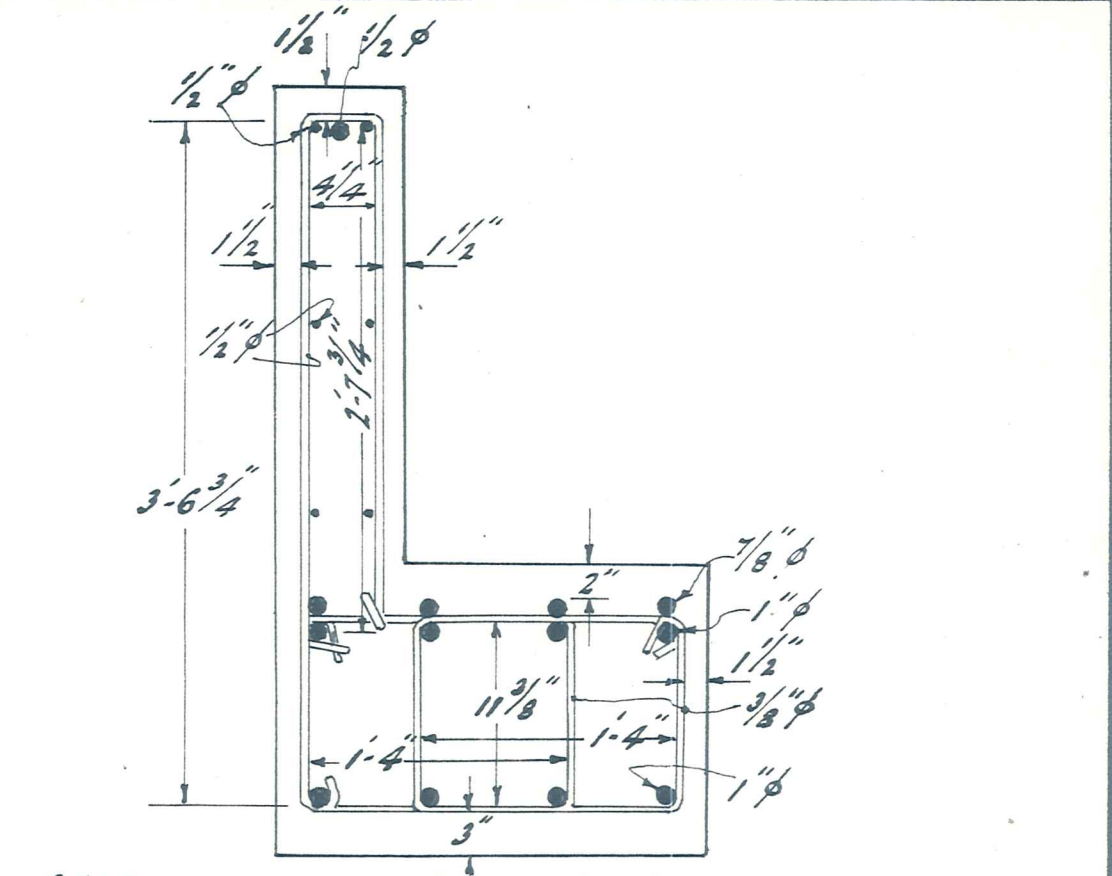


ELEVATION AT ABUTMENT

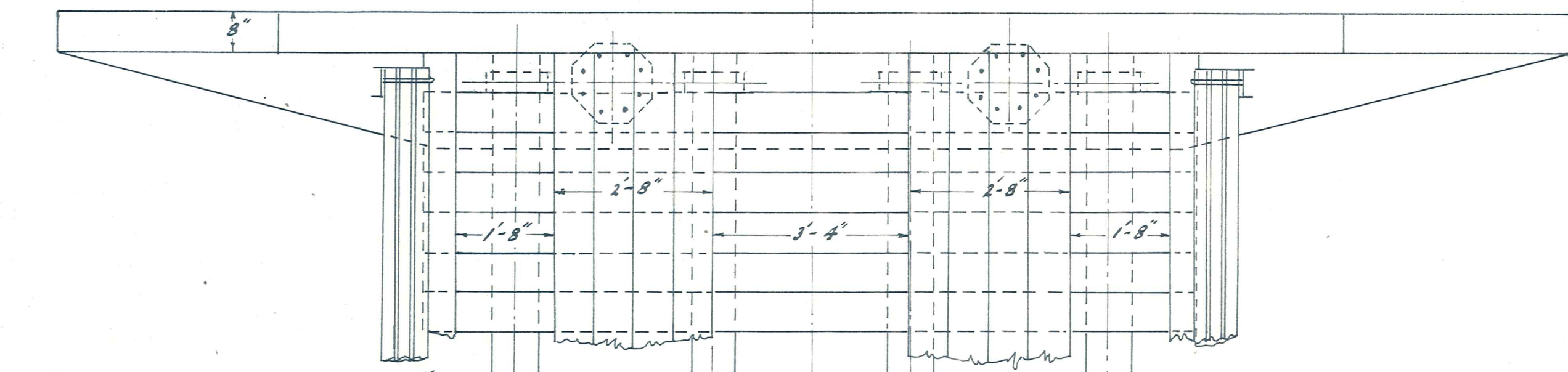


CROSS SECTION ON A-A OF ABUTMENT
Scale: 1/2" = 1'-0"

SECTION AT INTERMEDIATE PIER
Scale: 1/2" = 1'-0"

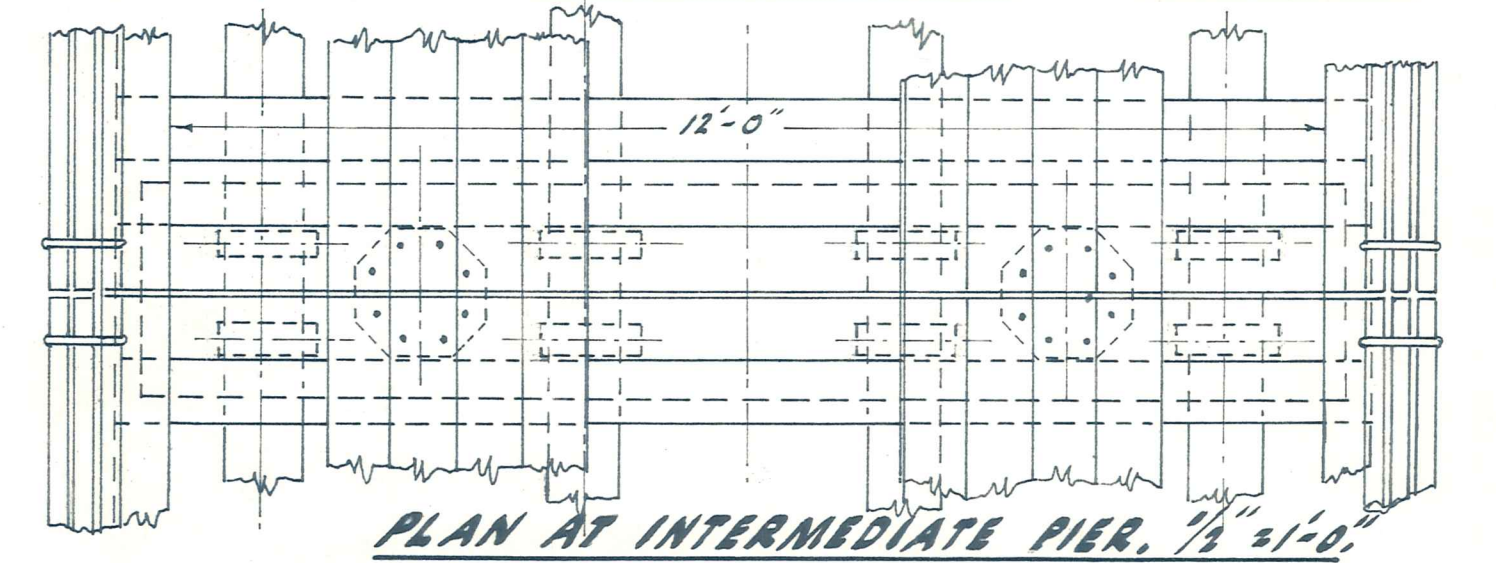


SECTION OF ABUTMENT BEAM
Showing Reinforcement
Scale: 1" = 1'-0"

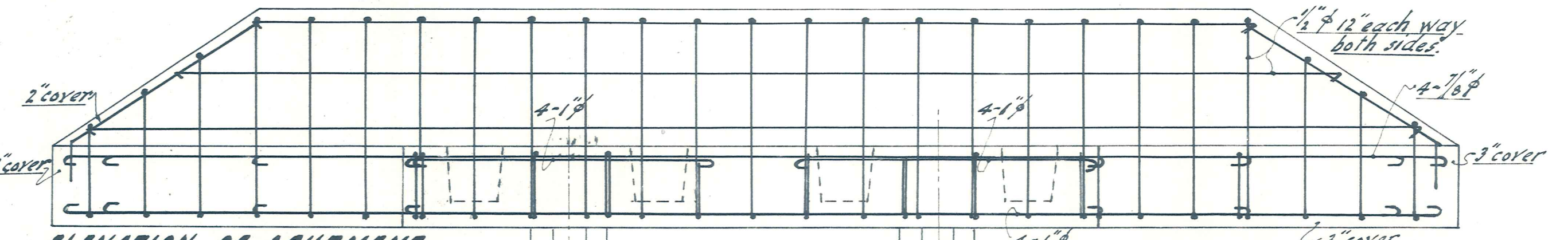


PLAN AT ABUTMENT Scale: 1/2" = 1'-0"

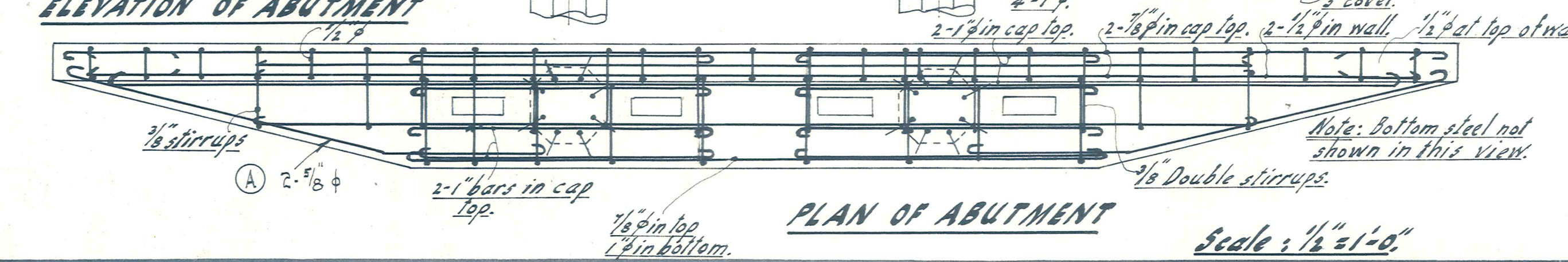
Note: Running planks to be full width, not as shown.



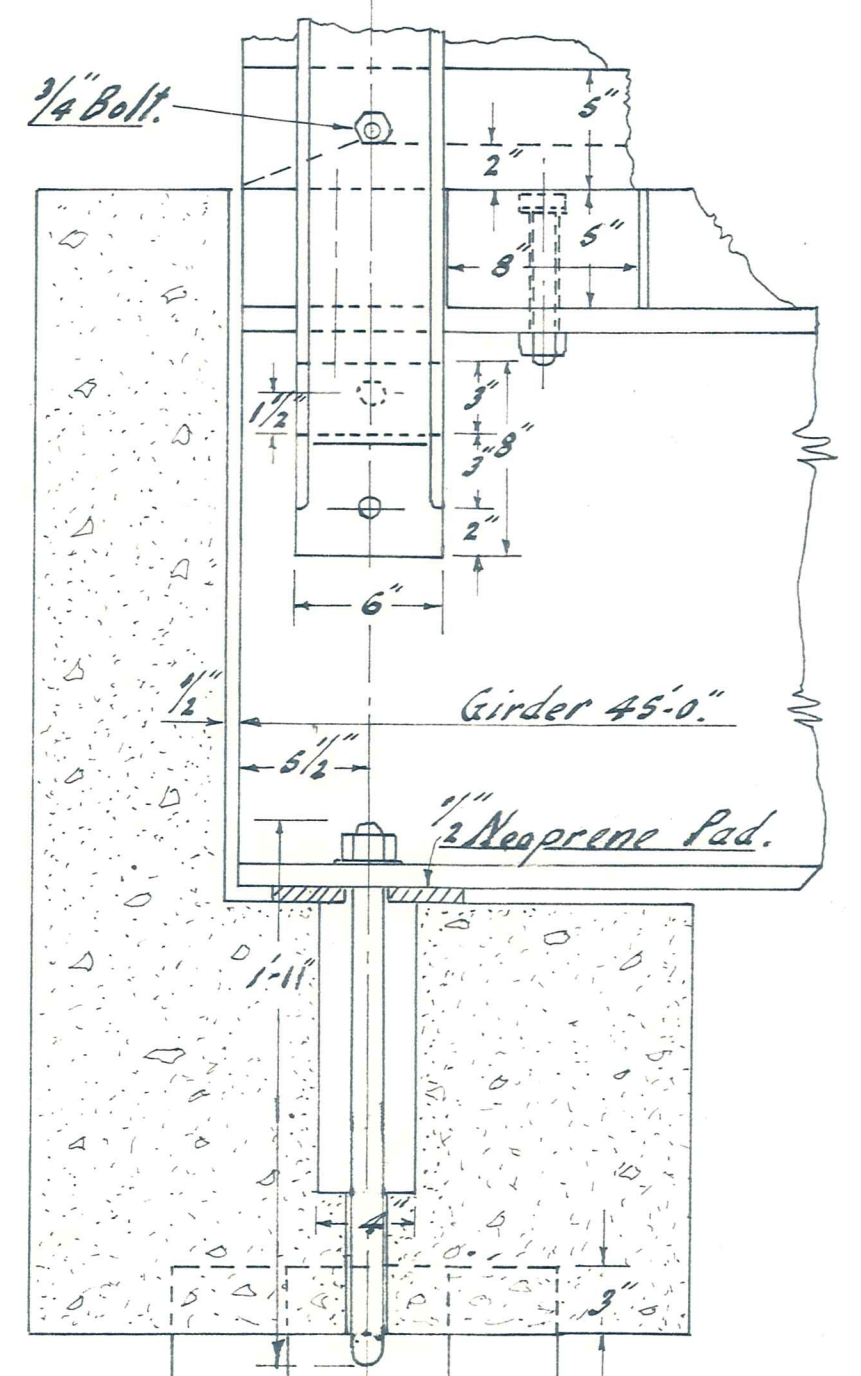
PLAN AT INTERMEDIATE PIER. 1/2" = 1'-0"



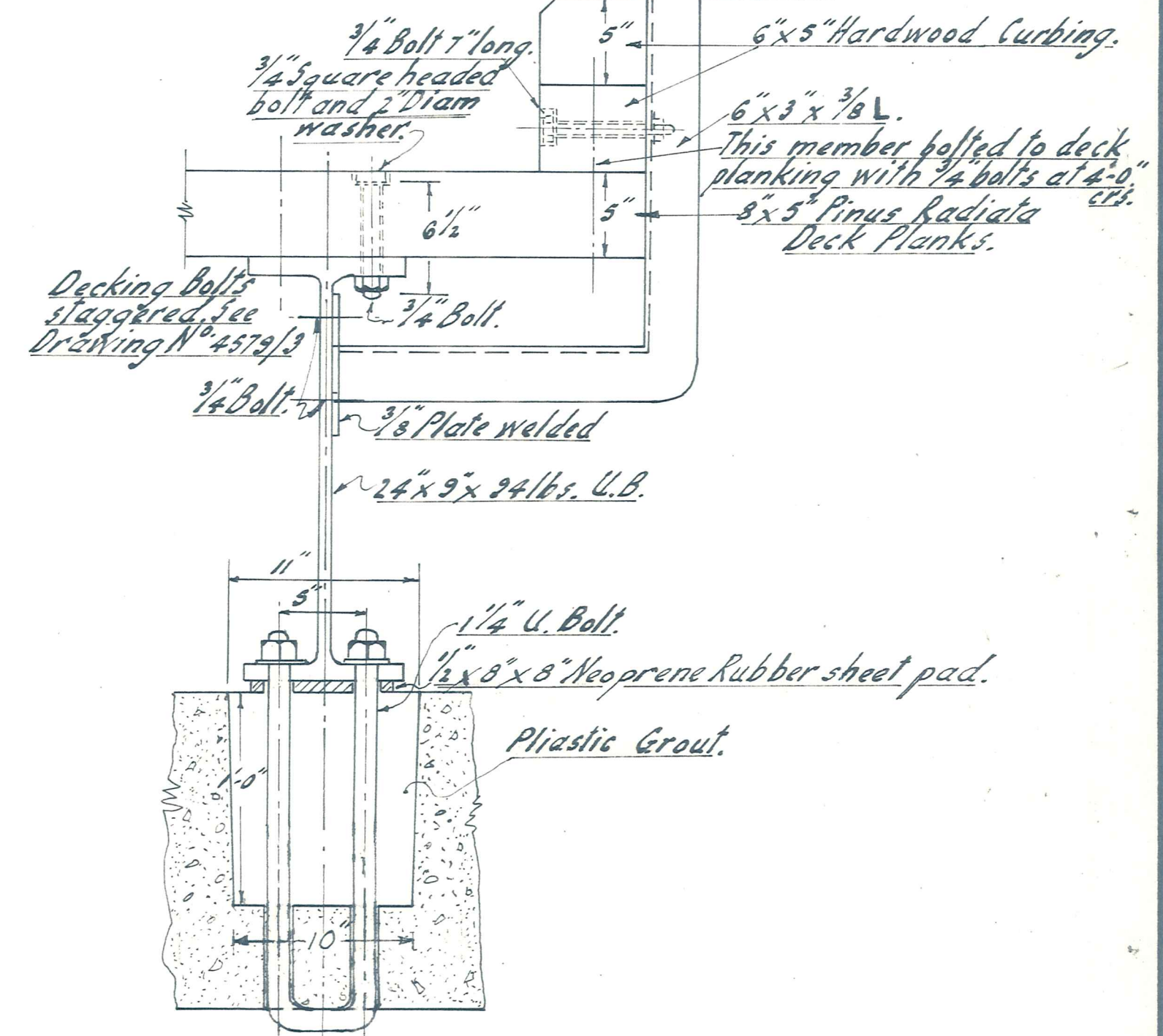
ELEVATION OF ABUTMENT



PLAN OF ABUTMENT
Scale: 1/2" = 1'-0"



DETAIL SECTION AT ABUTMENT
Scale: 1/8" = 1'-0"



DETAIL OF HANDRAILING and H.D. BOLT.
(Modified) Scale: 1/8" = 1'-0"

MANIOTOTO COUNTY COUNCIL

LOGANBURN BRIDGE.

AMENDMENTS					NAME		DATE
No.	By	Date	Description	Apprd.	Surveyed	Drawn	
A	J.P.	17/5/66	Rev stirrups altered		R.M. George	S. Harrison	Dec. 1965
			2-3/8" face rods added to abutment wings	J.R.P.			Feb. '66
					R. Atkinson		March '66

MANIOTOTO COUNTY COUNCIL
COUNTY CLERK

DUFFILL, WATTS & KING
CONSULTING CIVIL & STRUCTURAL ENGINEERS
DUNEDIN & INVERCARGILL N.Z.

File No. 4579/4
JOB No. 4579/4
L.B.K.
F.B.K.
Sheet of Sheets