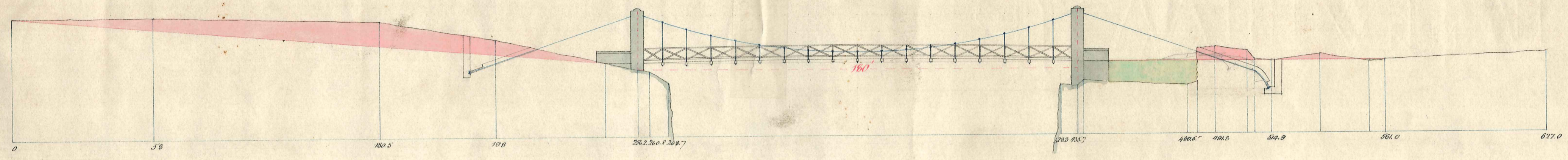


*Traffic Bridge over the river
Manzanilla San Antonio*

D18

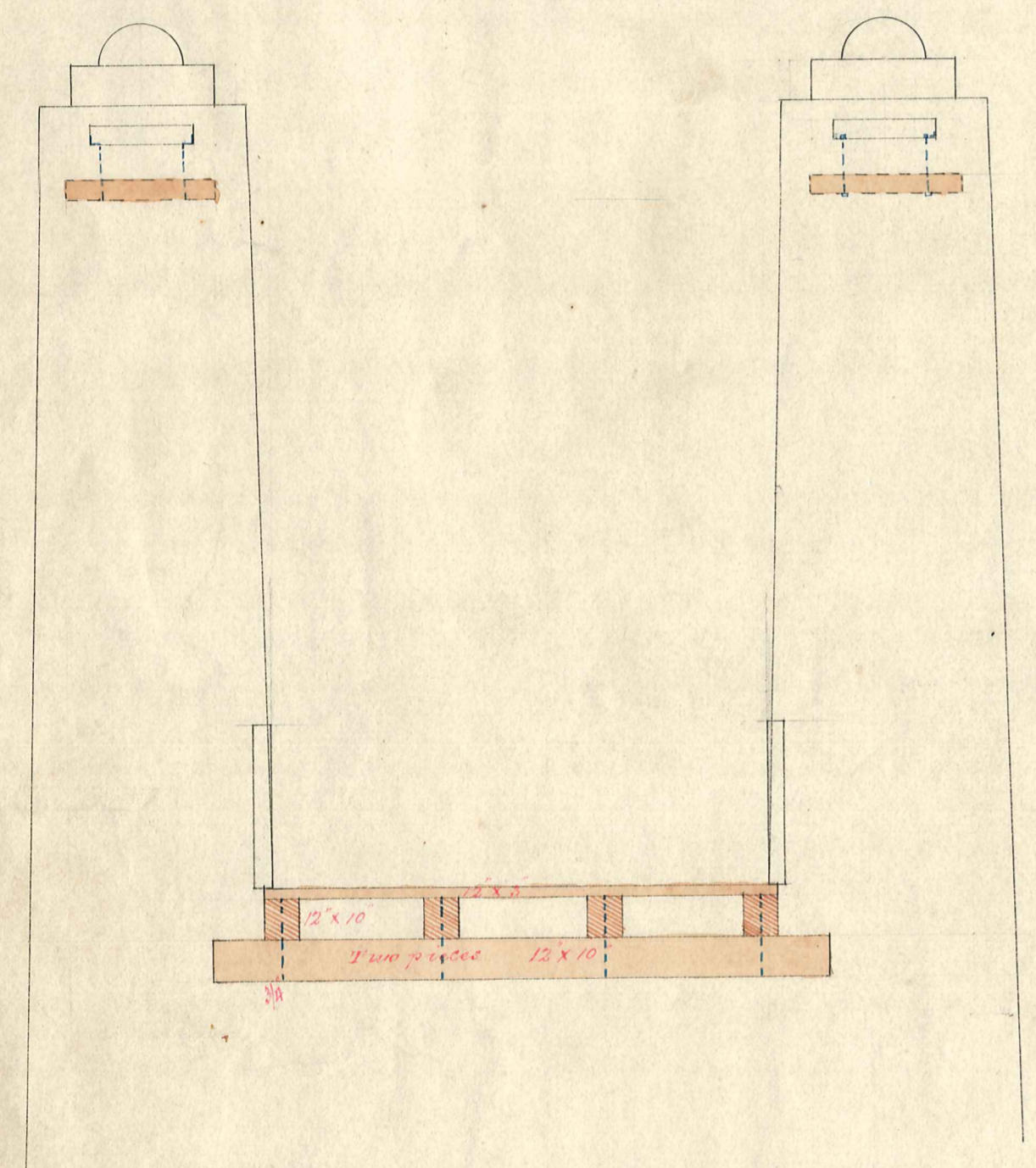
SHEET NO 1

ELEVATION

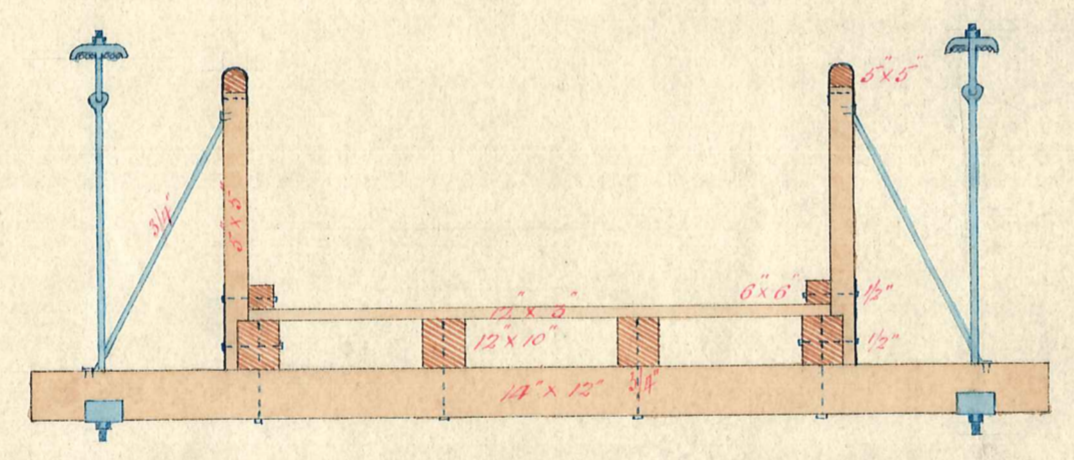


Scale 50 feet to one inch

PIERS

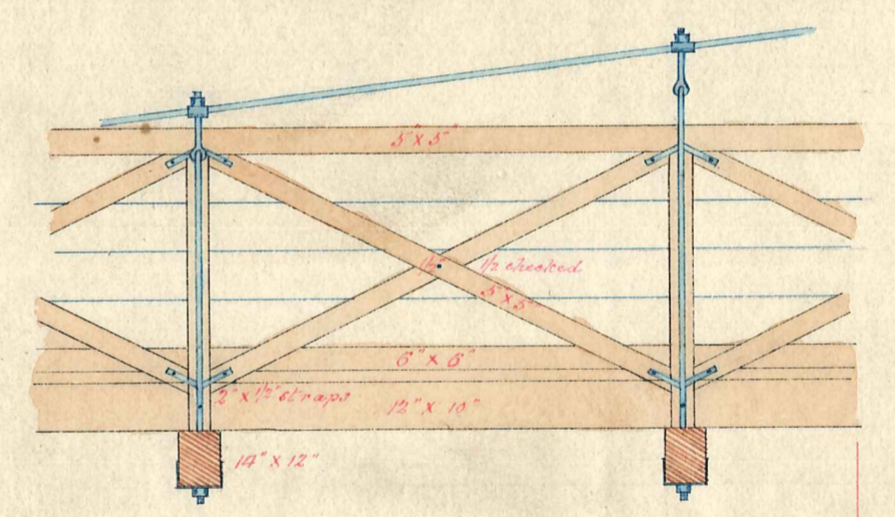


CROSS SECTION

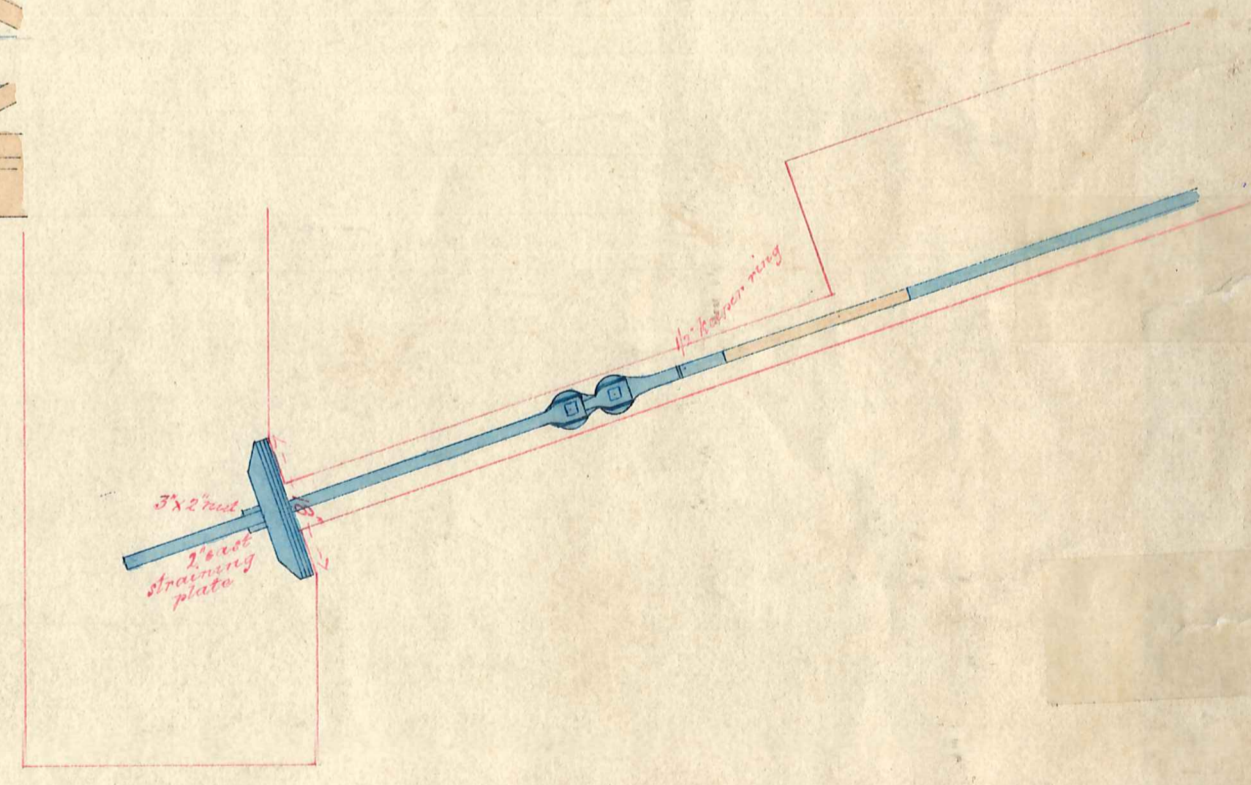


Scale 4 feet to one inch

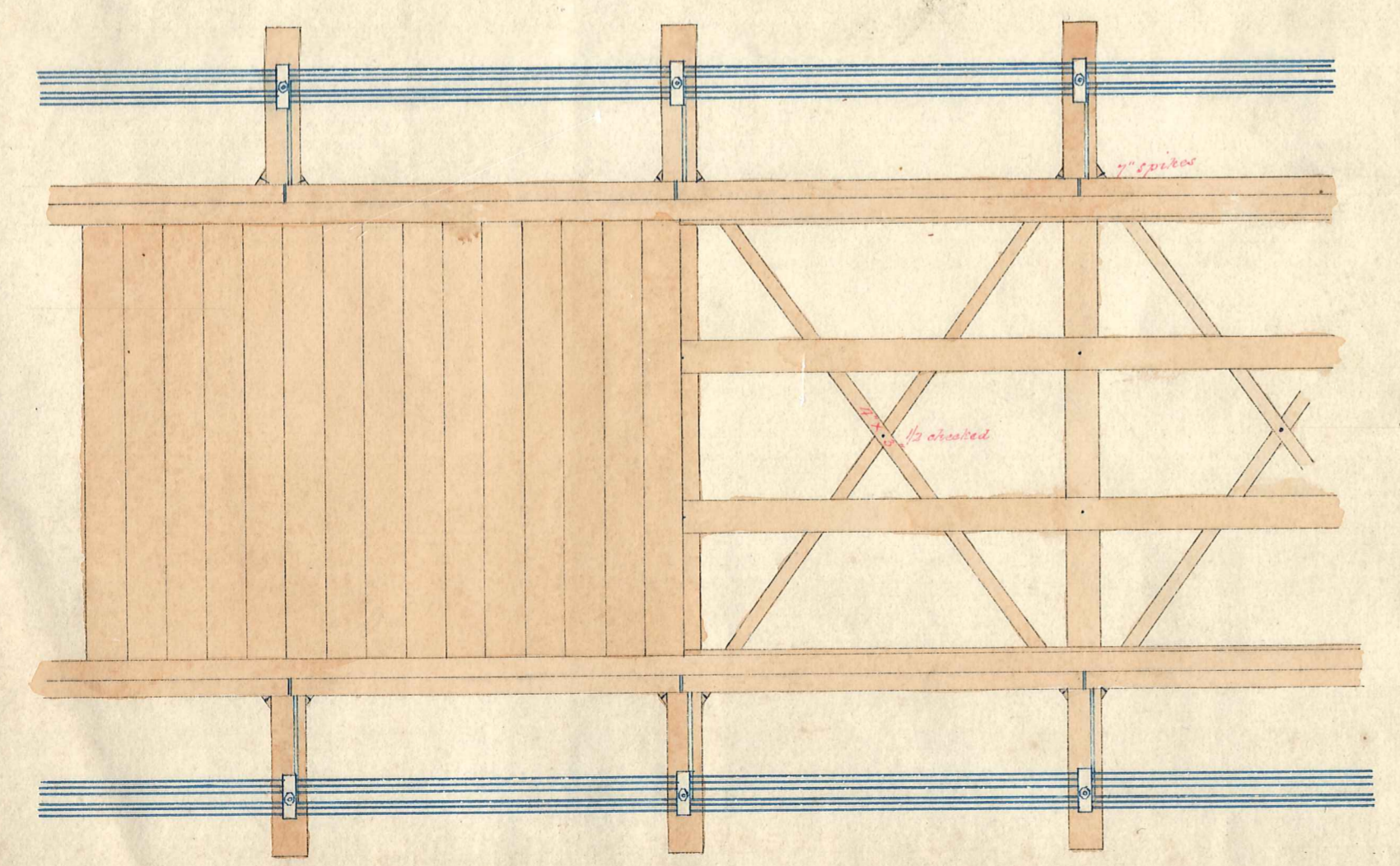
PART ELEVATION



ANCHORING PLATES & RODS

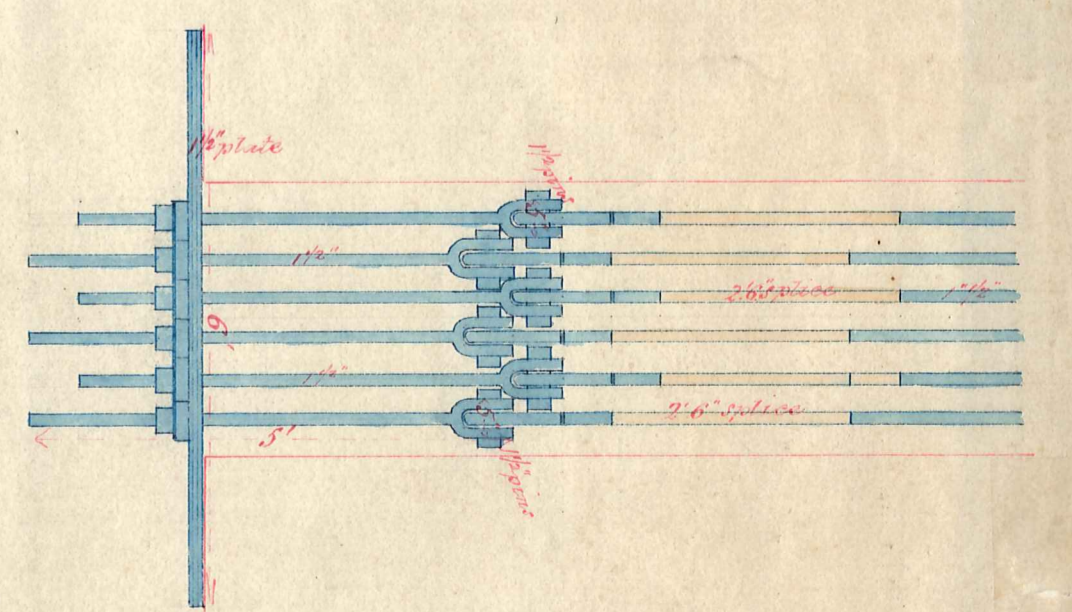
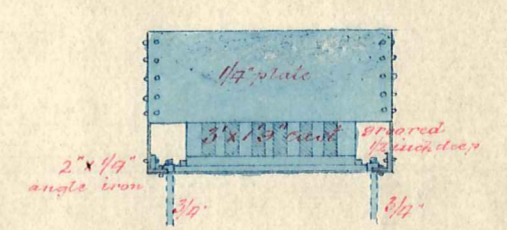
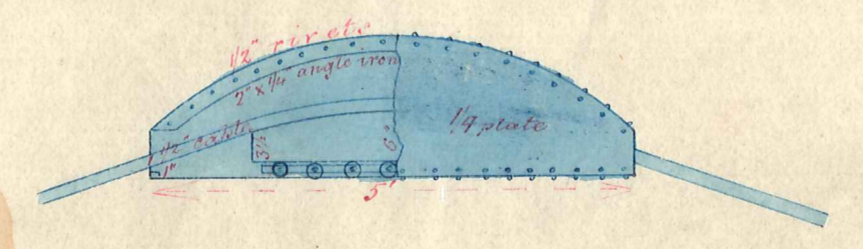
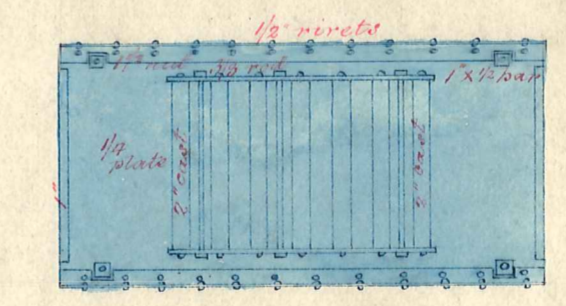
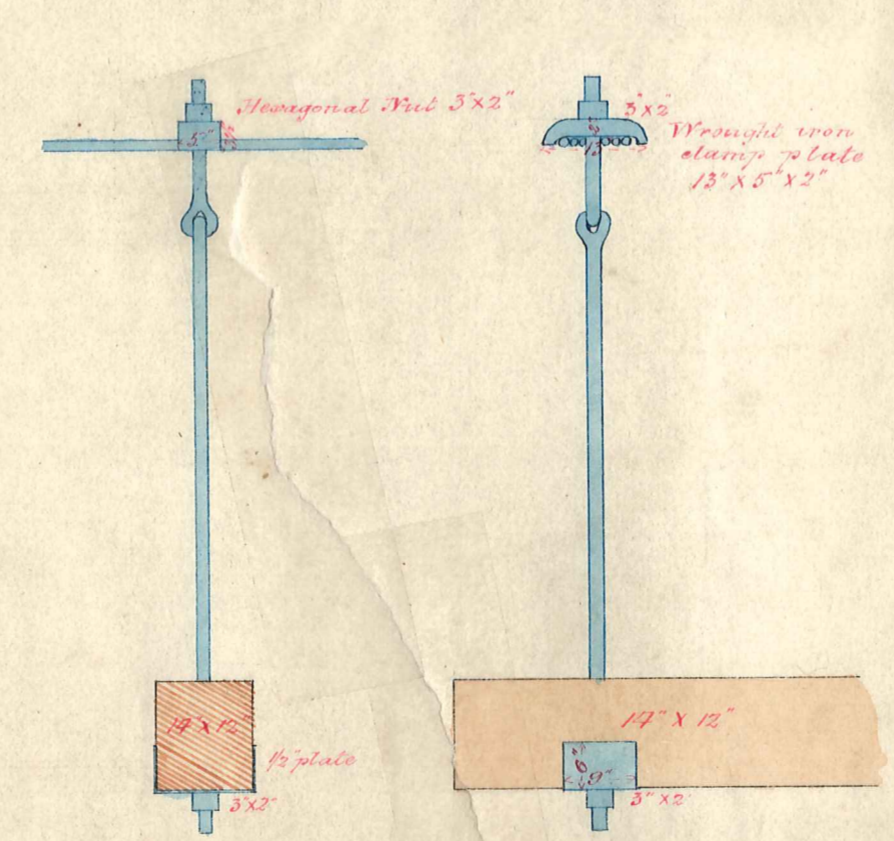


PART PLAN



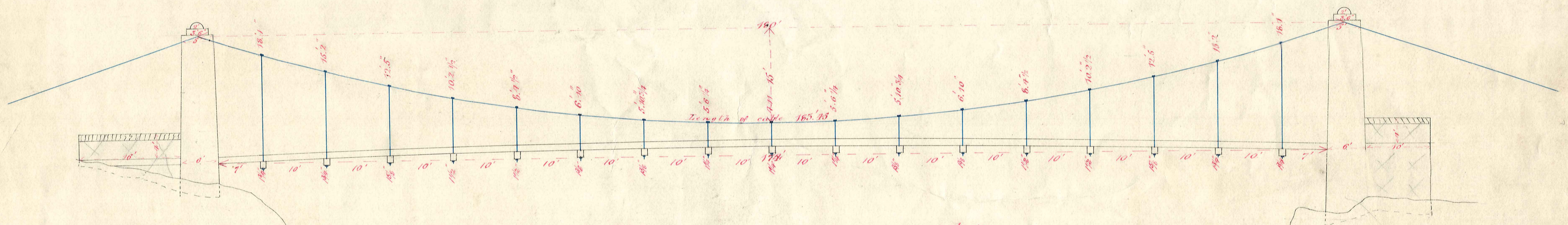
SADDLE, ROLLERS &c

SUSPENSION RODS



Scale 2 feet to one inch

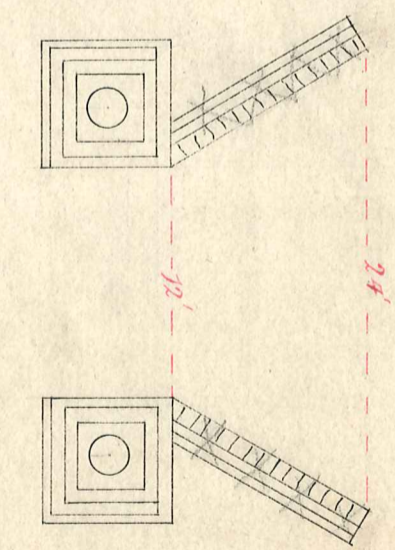
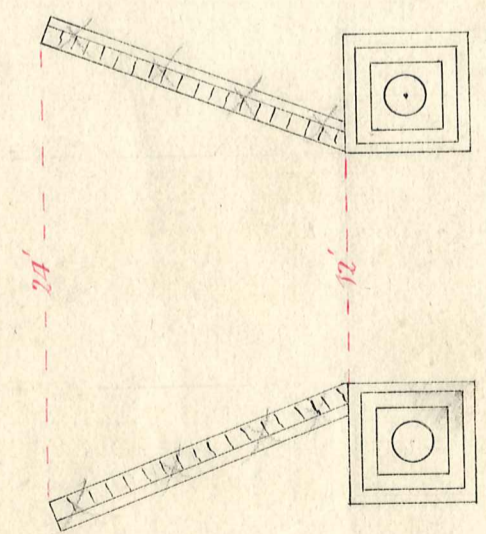
Delaney



*N.B. The length of suspension rods is given from bottom
of cables to bottom of cross cills*

Scale 10 feet to one inch

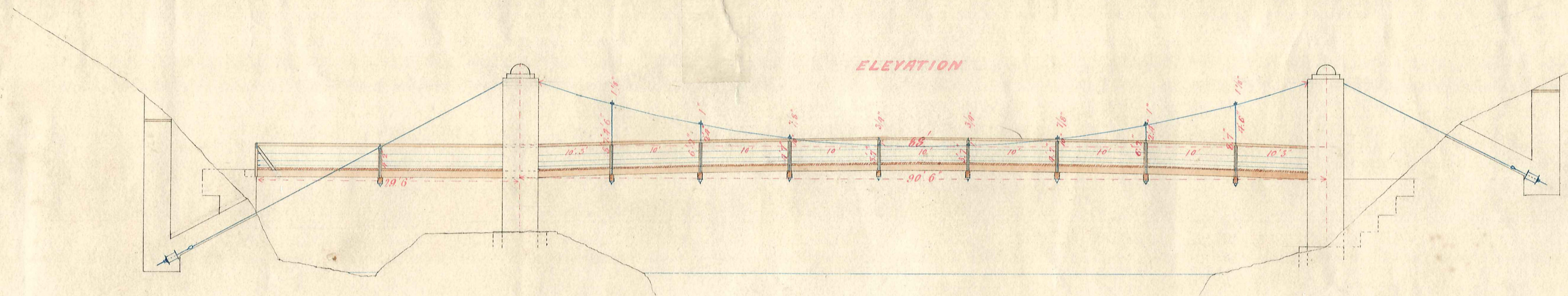
The cross sections of piers may be taken as level



*A. H. Hays
County Surveyor
9. 1. 78*

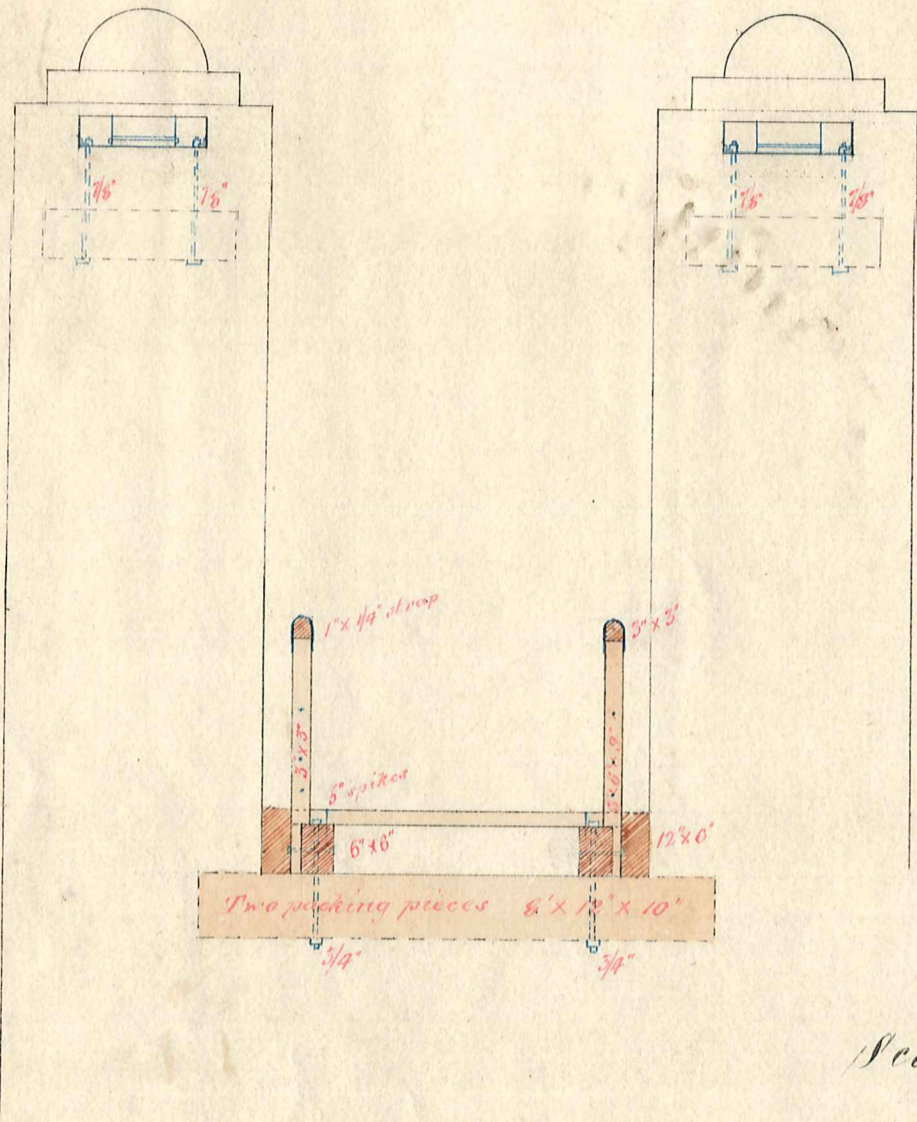
FOOT BRIDGE OVER MANUHERIKIA

NEAR ALEXANDRIA

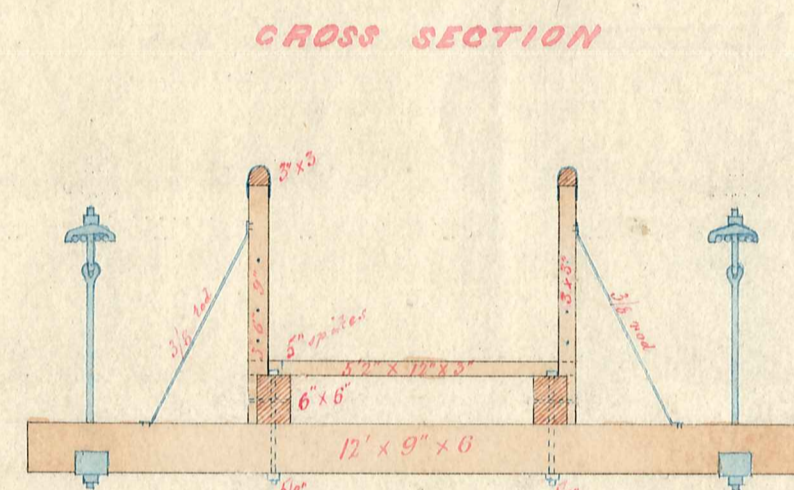


Scale 10 feet to 1 inch

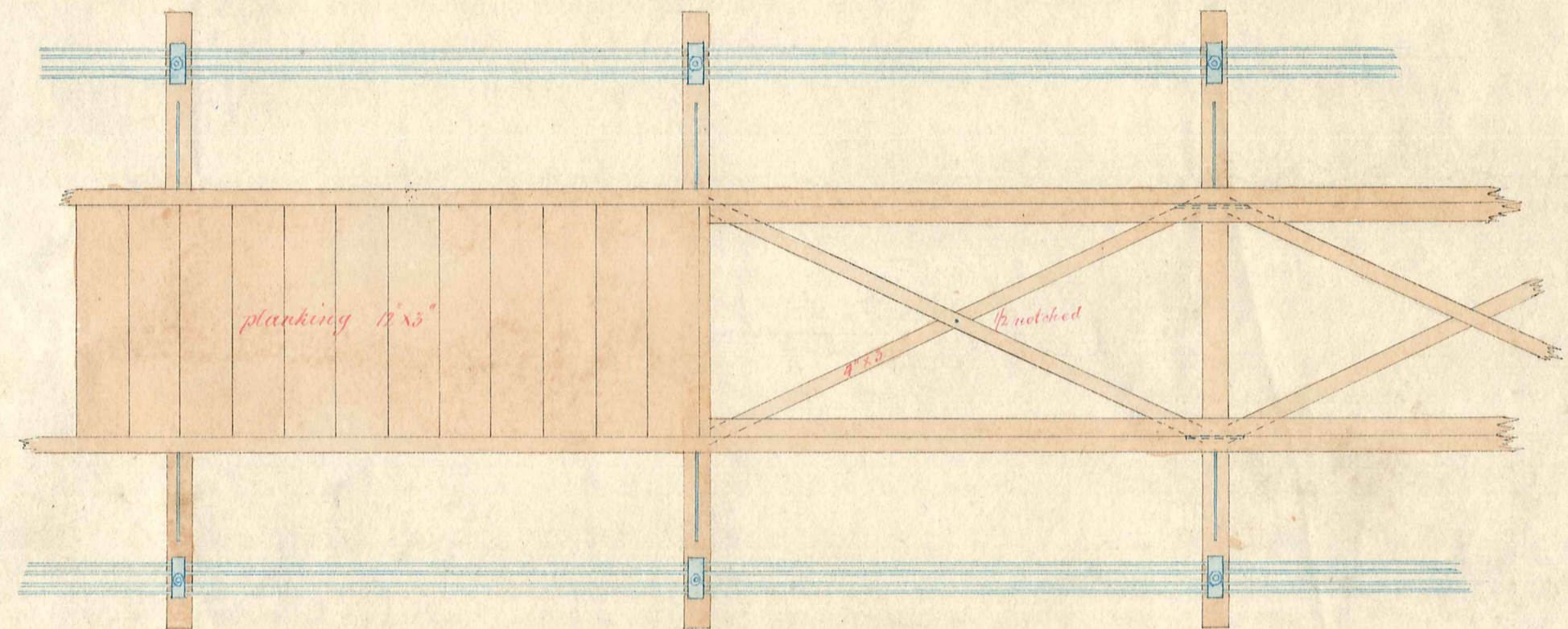
N.B. The length of suspension rods is given from under side of cables to under side of cross gills



Scale 5 feet to 1 inch

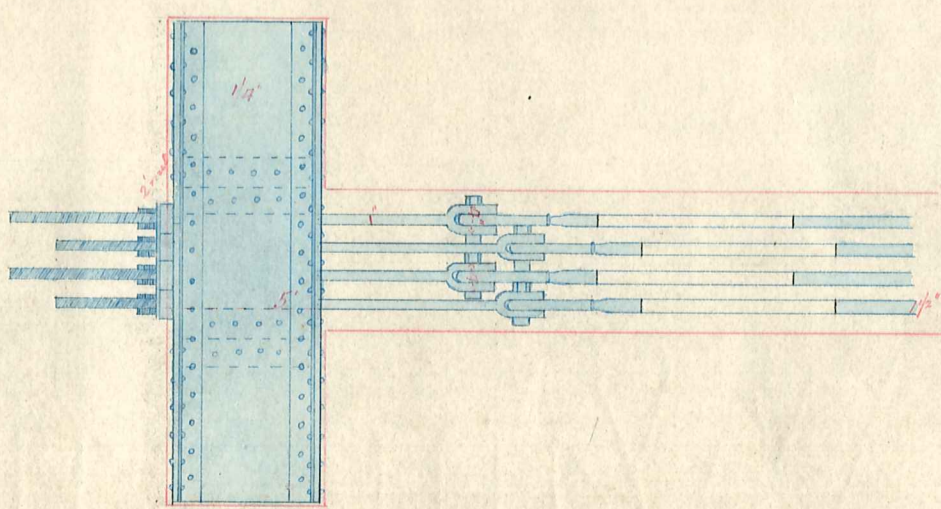
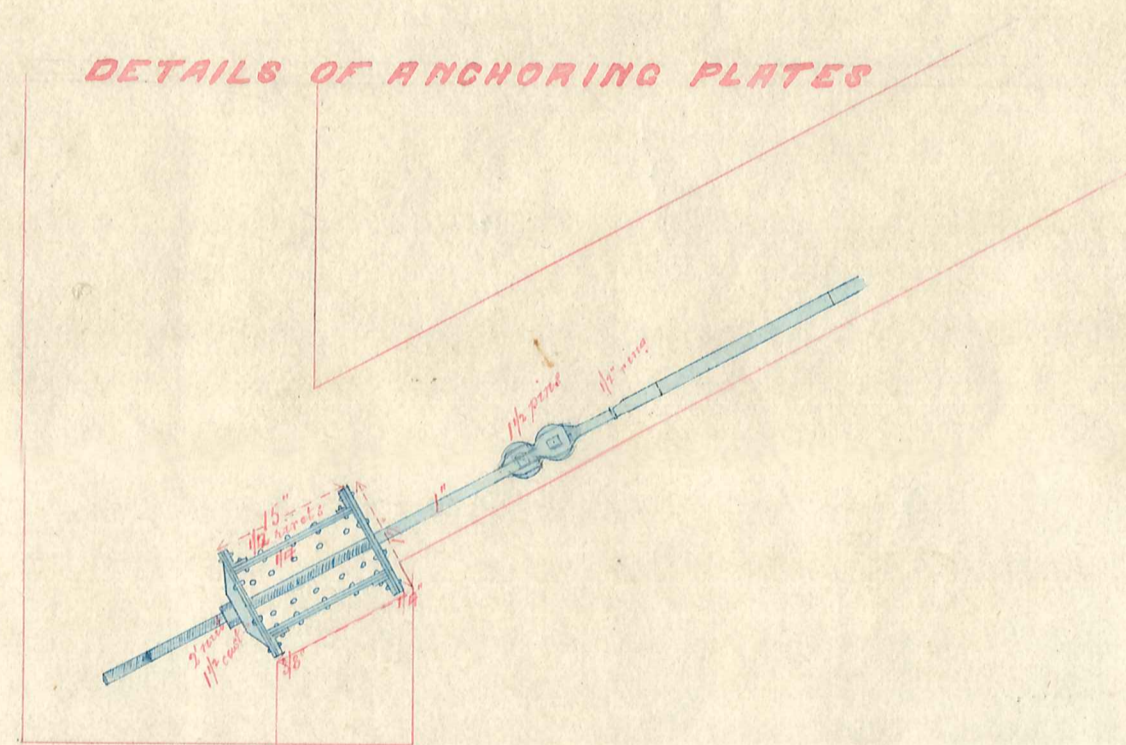


PART PLAN



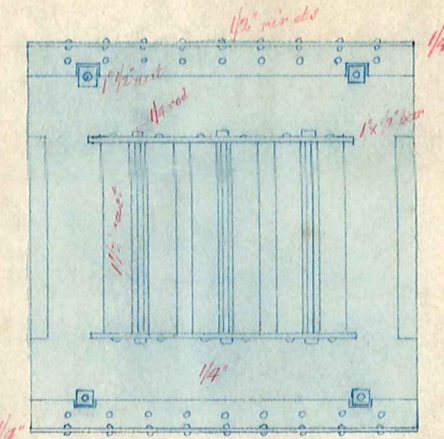
Scale 5 feet to 1 inch

DETAILS OF ANCHORING PLATES

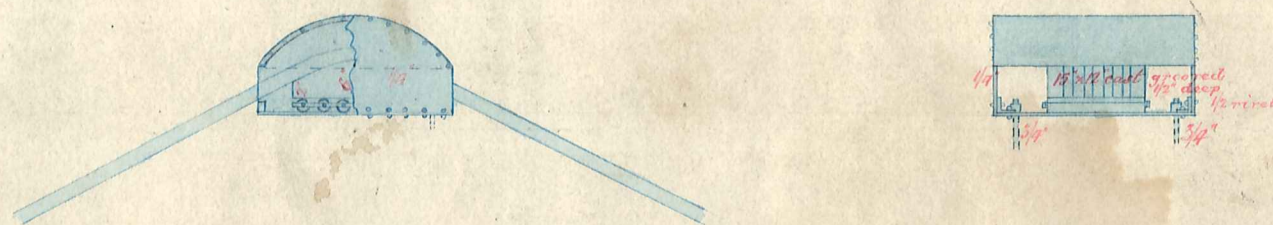


Scale 2 feet to 1 inch

DETAILS OF ROLLERS, SADDLE &

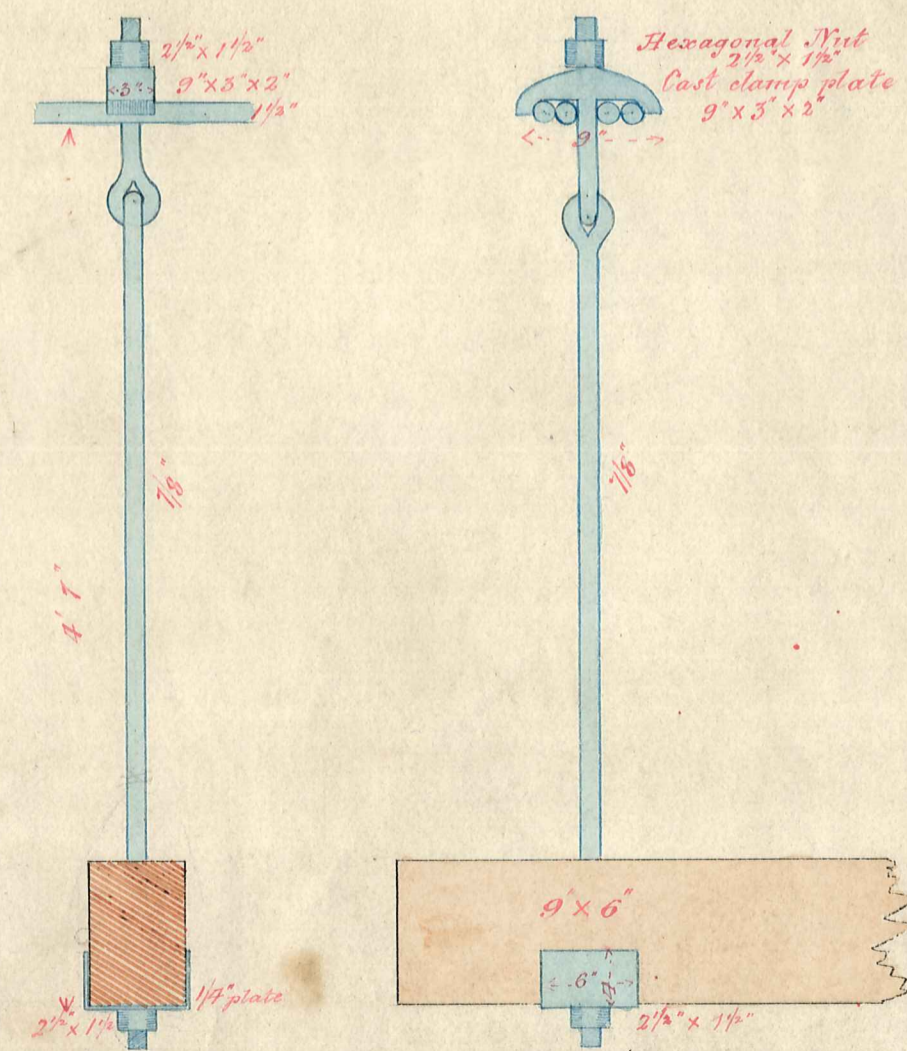


Scale 1 foot to 1 inch



Scale 2 feet to 1 inch

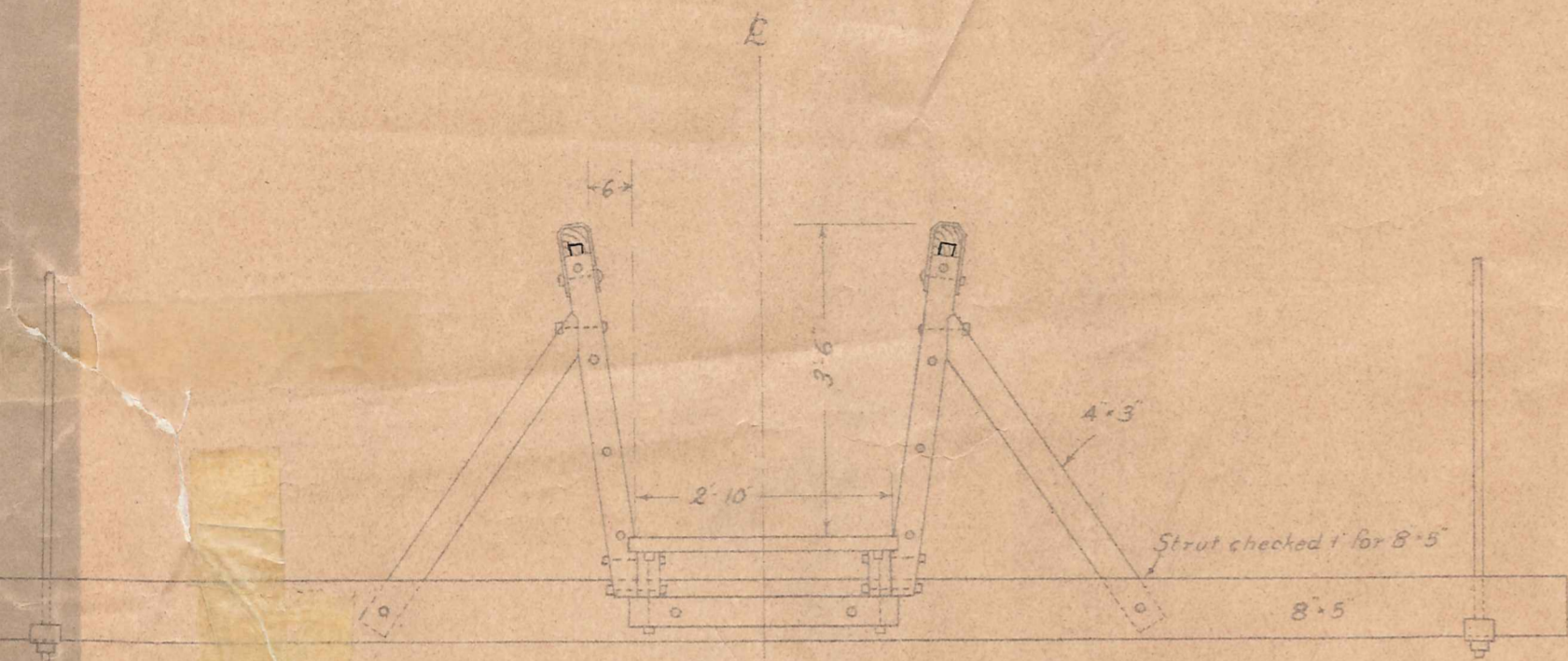
SUSPENSION RODS



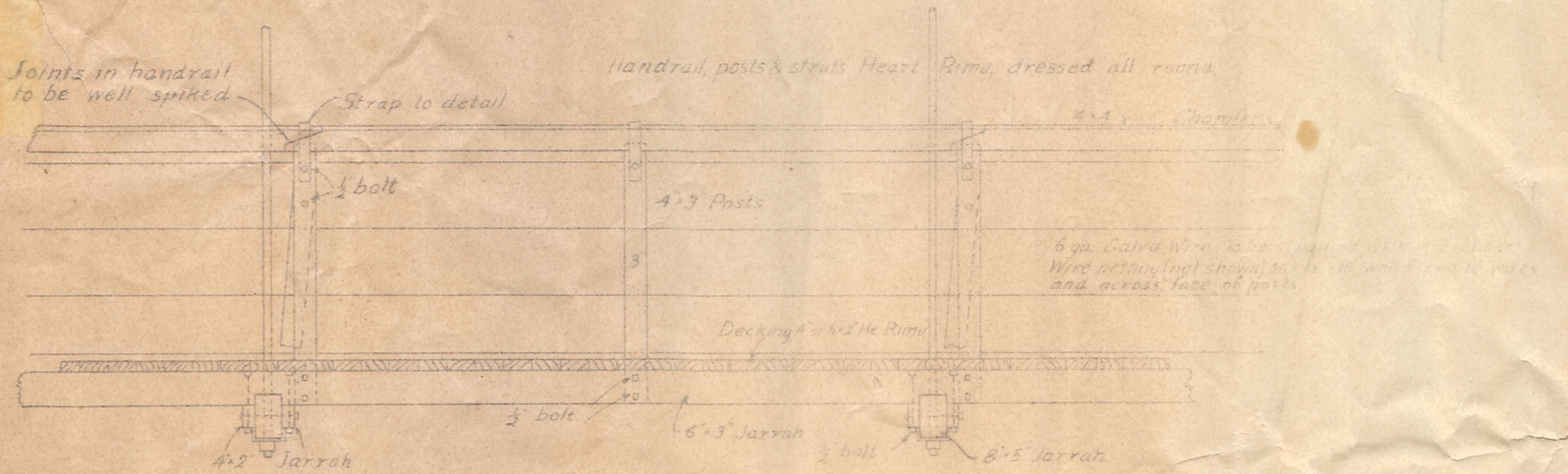
Scale 1 foot to 1 inch

D. J. Haggarty
County Surveyor
23. 6. 77

- END SECTION -
Scale 1 inch = 2 feet.

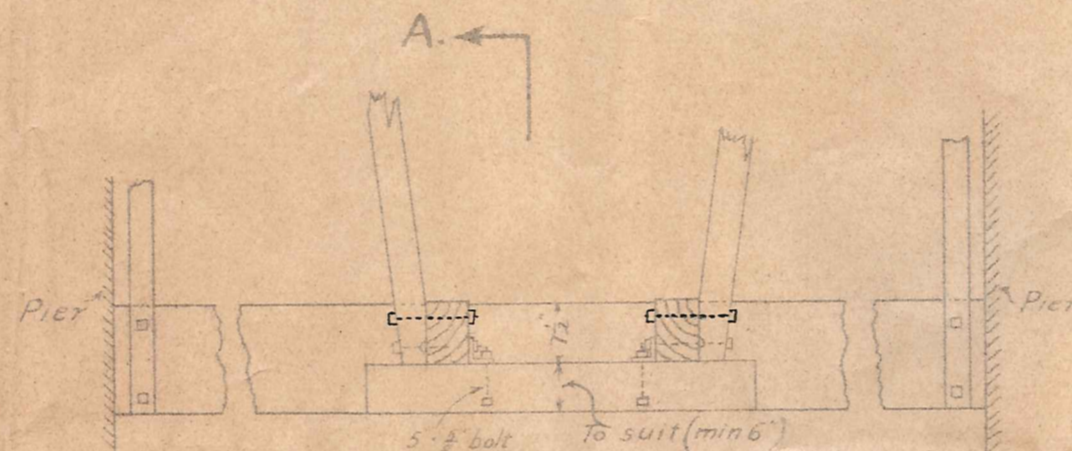


- SECTION ON E -
Scale 1 inch = 2 feet.

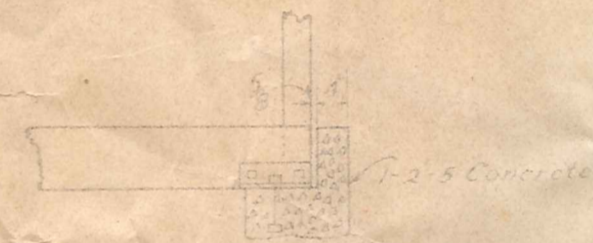


		180'																	
		Camber																	
N ^o of Transoms	9	8	7	6	5	4	3	2	1	0	1	2	3	4	5	6	7	8	9
Camber	0	2	3 1/8	5	6 1/2	7 1/4	8	8 1/2	8 3/4	9	8 3/4	8 1/2	8	7 1/4	6 1/2	5	3 1/8	2	0

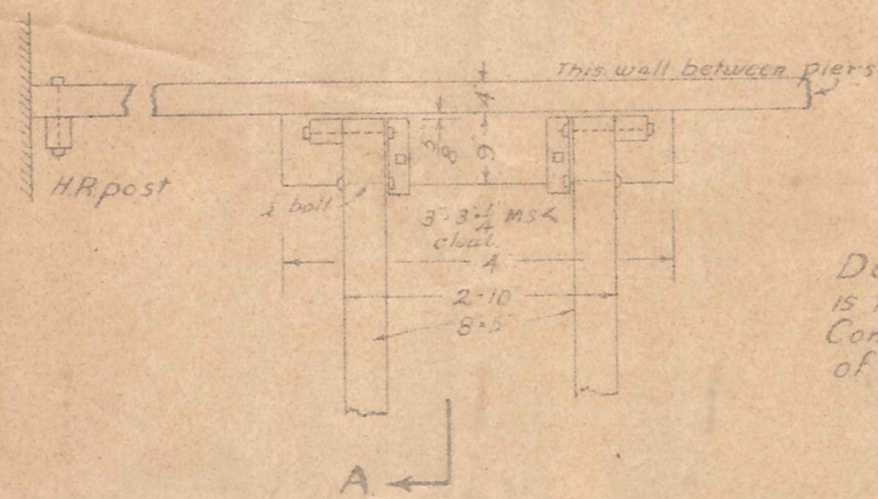
CAMBER DIAGRAM
Not to scale



ELEVATION



SECTION A.A.

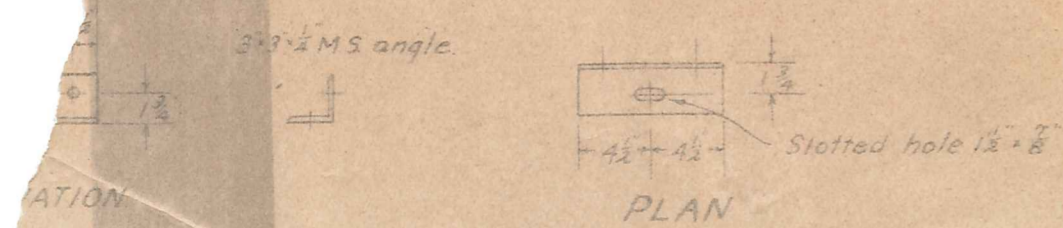


PLAN

- ARRANGEMENT AT ENDS FOR EXPANSION ETC. -
Scale 1 inch = 2 feet.

Decking (not shown) is to run 1/2" on to concrete at ends of bridge.

190/7



DETAIL OF ANGLE CLEAT
Scale 1 inch = 1 foot.

BRIDGE ACROSS MANUHERIKIA RIVER AT ALEXANDRA
RECONSTRUCTION AS FOOTBRIDGE