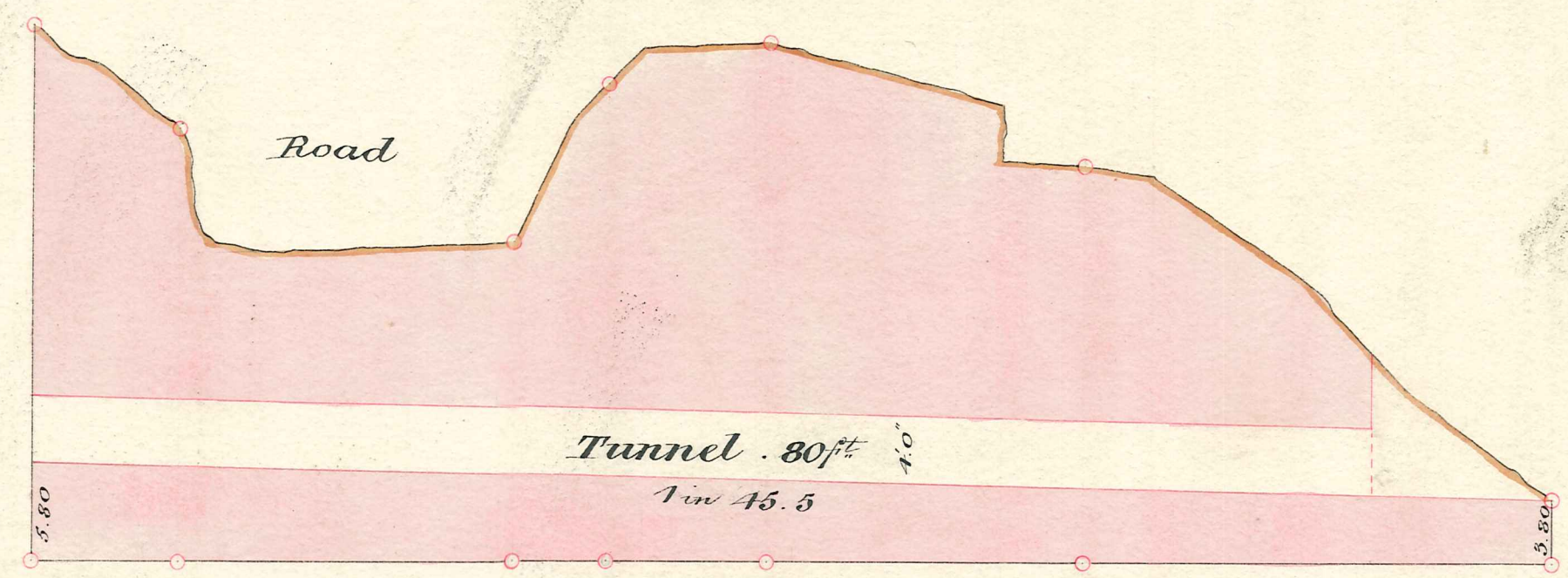


DRAINAGE FUNNEL.

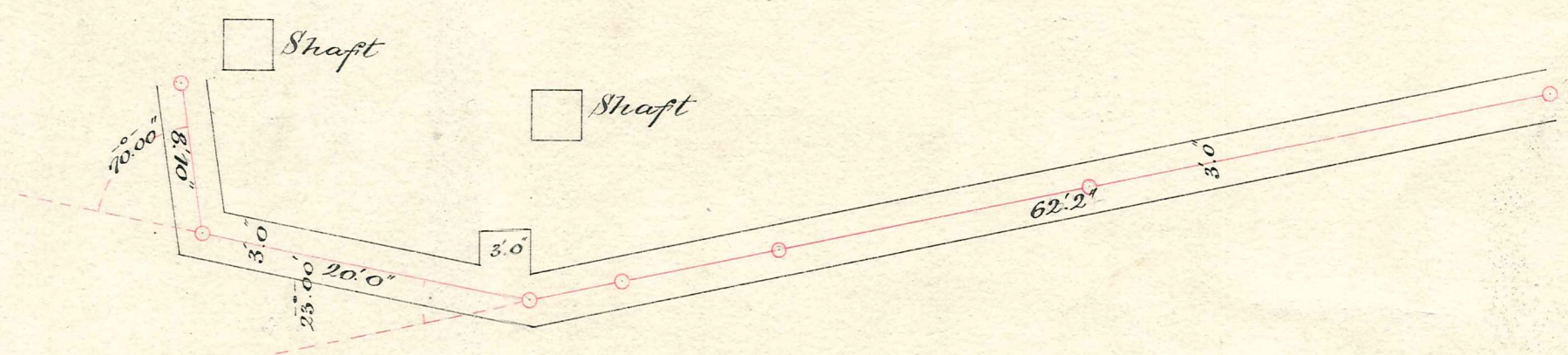
CONNELL BRIDGE MOORINGS

CONTRACT NO 187.

LONGITUDINAL SECTION



PLAN

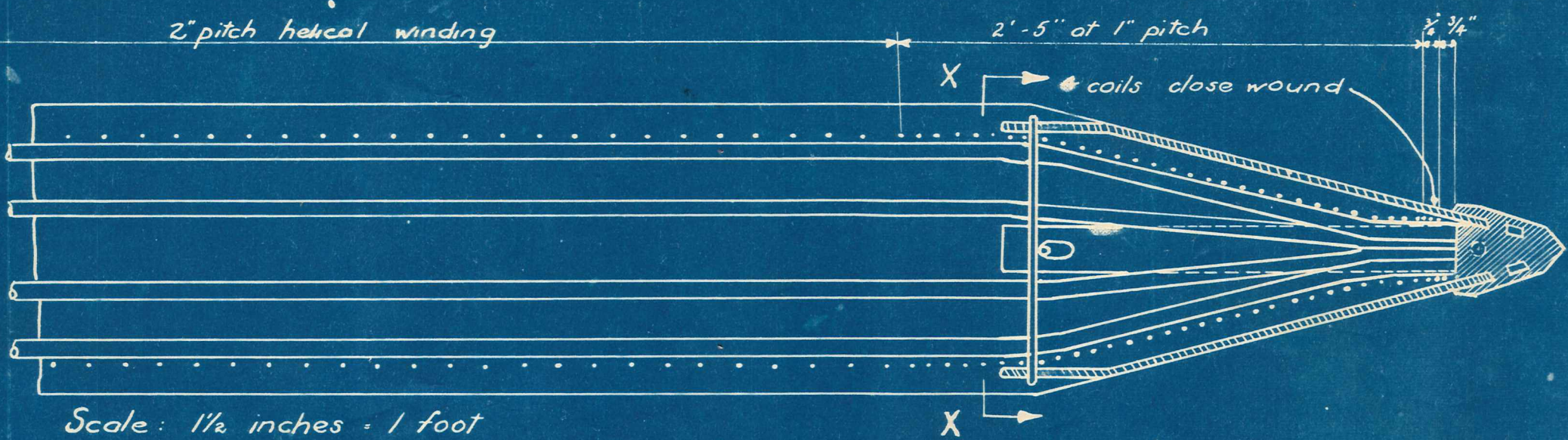
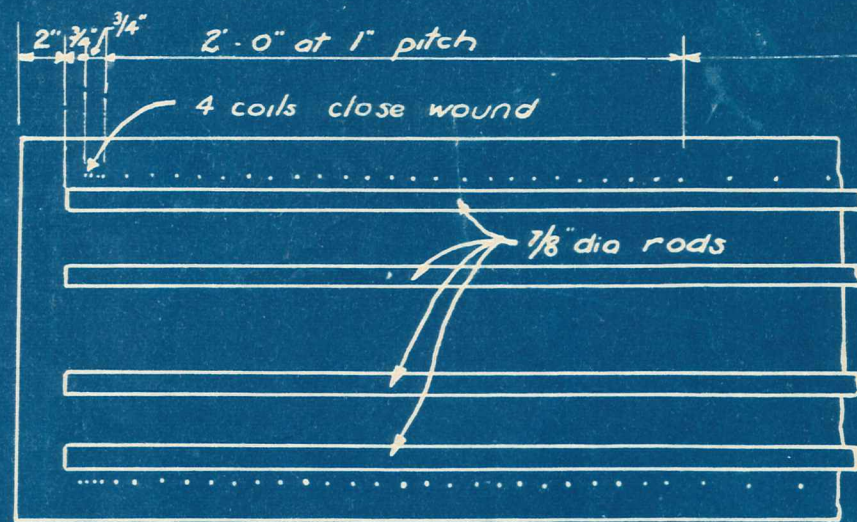


Scale ~ 10 feet = 1 inch

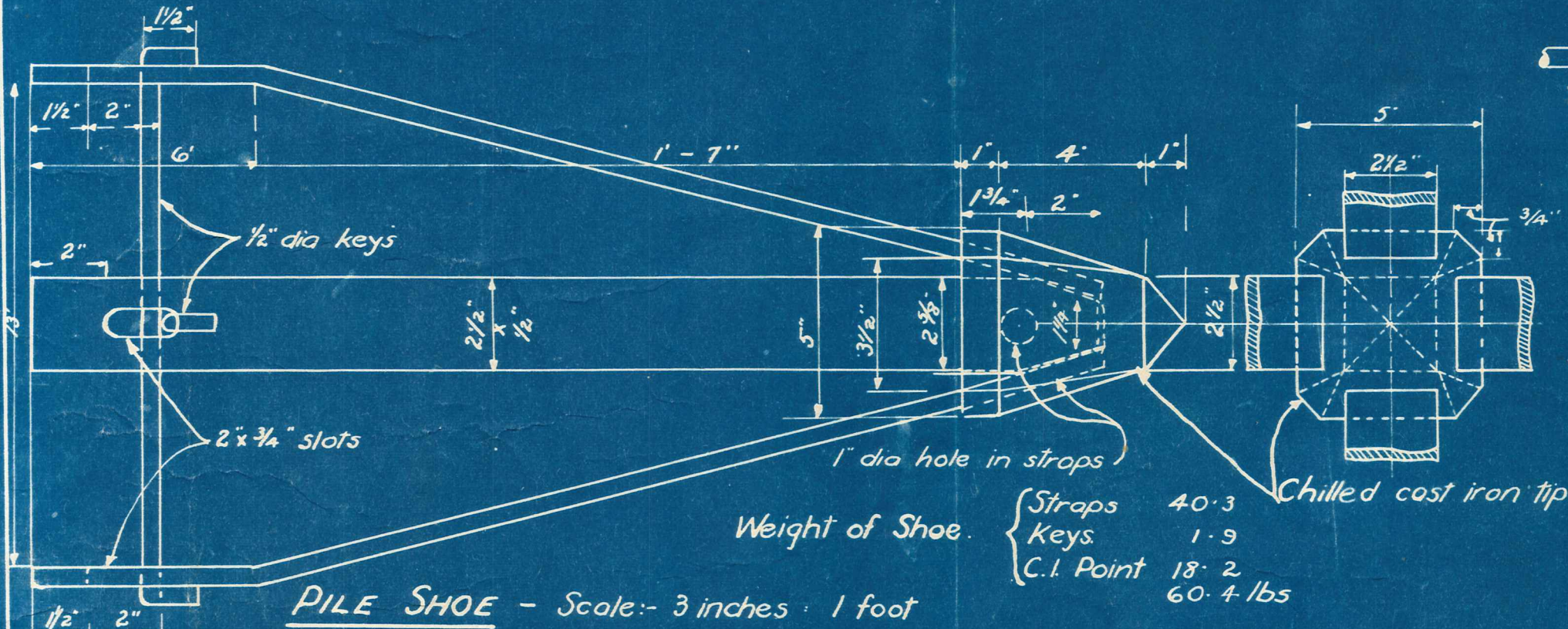
67/8

*St Macgungor
County 10.5.87*

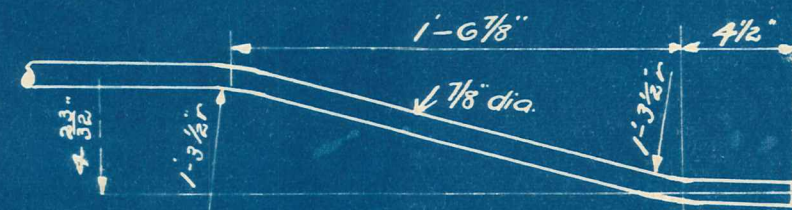
A. 47



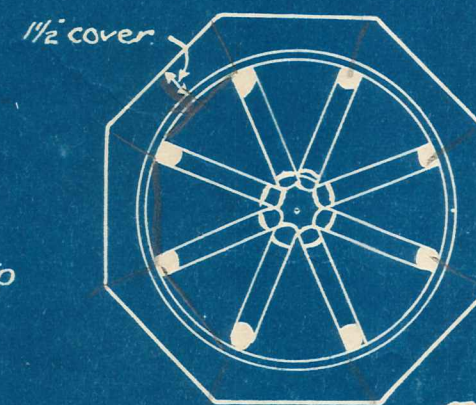
Scale: 1/2 inches = 1 foot



PILE SHOE - Scale: 3 inches = 1 foot



CRANKED END OF PILE ROD



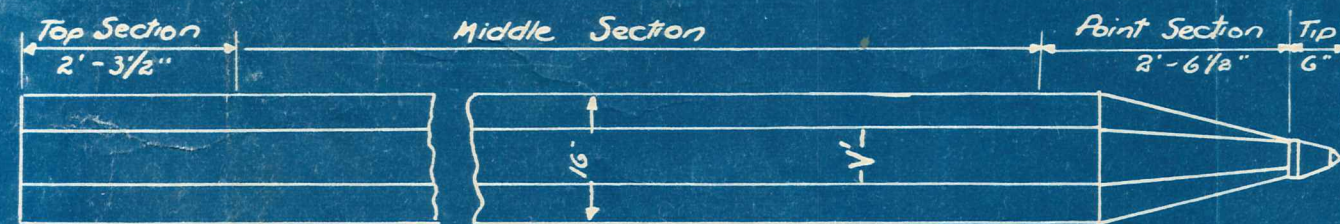
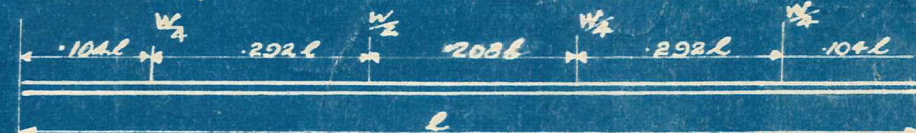
SECTION X-X

METHODS OF LIFTING AND HANDLING PILES.

1. Piles under 20ft long may be slung from a single point located anywhere along the pile
2. Piles from 20ft to 31 ft long may be slung from a single point located a distance of 0.295 L from the pile head
3. Piles over 31 ft and up to 45ft shall be slung from two points located a distance of 0.207 L from each end.
4. Piles over 45 ft and up to 66 ft long shall be slung from three points as indicated below.



5. Piles over 66 ft and up to 88 ft long shall be slung from four points as indicated below.



WEIGHTS OF PILES OF VARIOUS LENGTHS

Scale 1/2" = 1'-0"

Nominal length in feet	10	15	20	25	30	35	40	45	50	55	60
Weight in Tons	.87	1.37	1.86	2.35	2.84	3.34	3.83	4.32	4.82	5.31	5.80

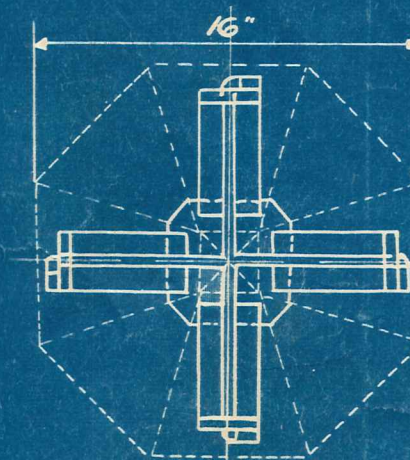
NOTE:-

Minimum weight of monkey for piles under 30 feet long is 3 tons provided specified bearing does not exceed 25 tons. If bearing exceeds 25 tons a 4 ton monkey must be used irrespective of the pile length

QUANTITIES

16" Oct Pile	Concrete (cub ft)	7/8" dia Rods (lin. ft)	No 6 g Wire (lin. ft)
Top Section 2'-3 1/2" long	3.375	17	94
Middle Section per foot run	1.473	8	20.25
Point Section 2'-6 1/2" long	2.229	20.66	75

NOTE:- Nominal length of Pile = Length of reinforcing steel.



PLAN OF SHOE

For arrangements involving more than two points of pick up, a suitable system of pulleys and/or beam must be used to give equal vertical reactions of each point

NOTE:

The above is based on a limiting stress of 12000 lbs/sq in. in the steel, assuming 100% impact during lifting

STANDARD 16" OCTAGONAL REINF CONC PILE

P.W.D. 127636 - Piles wound helically with No 6 G. (s.w.g.) wire

DUFFILL, WATTS & KING
CONSULTING ENGINEERS & SURVEYORS
DUNEDIN and INVERCARGILL

