

VINCENT COUNTY COUNCIL

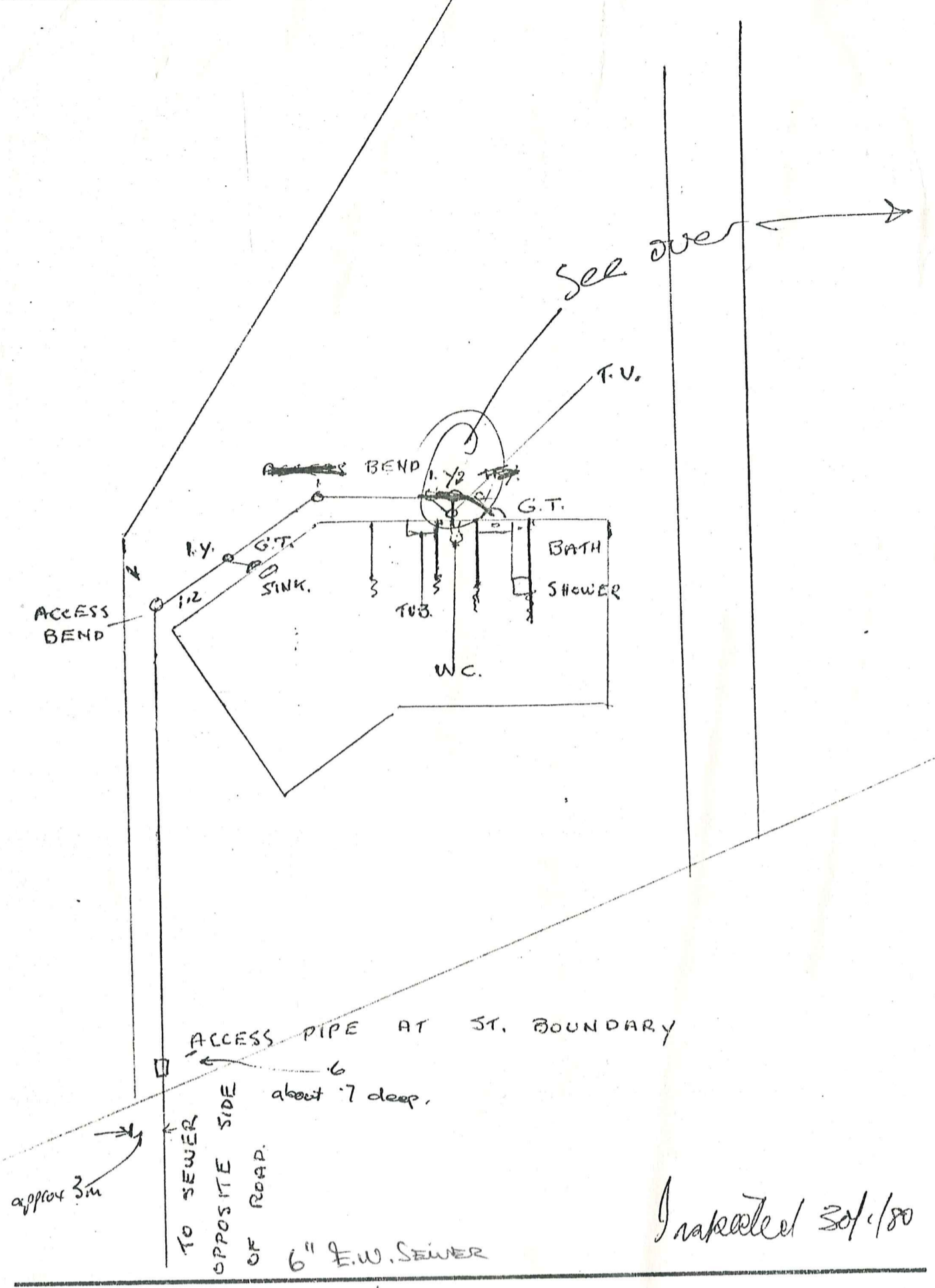
DRAINAGE BLOCK PLAN

REFERENCE:
 I.T. — means Intercepting Trap
 F.A.I. — means Fresh Air Inlet
 I.P. — means Inspecting Pipe
 I.V. — means Inspection Junction

REFERENCE:
 Y.P. — means Junction Pipe
 G.T. — means Gully Trap
 W.C. — means Water Closet
 B.V. — means Back Vent

APPLICATION No. 4522
 M.V. — means Main Vent
 T.V. — means Terminal Vent
 I.C. — means Inspection Chamber
 D.P. — means Down Pipe

Scale — 1" = 100'



Inspected 30/1/80

OWNER: MR + MRS K.W. NESBITT. LOCATION: CHAKRAO

LOT No: 2

D.P.: 17132

SECTION:

BLOCK:

2843/102

SIGNATURE: R. Renan (Registered Drainlayer)

PLEASE READ OVER

VINCENT COUNTY COUNCIL

DRAINAGE BLOCK PLAN

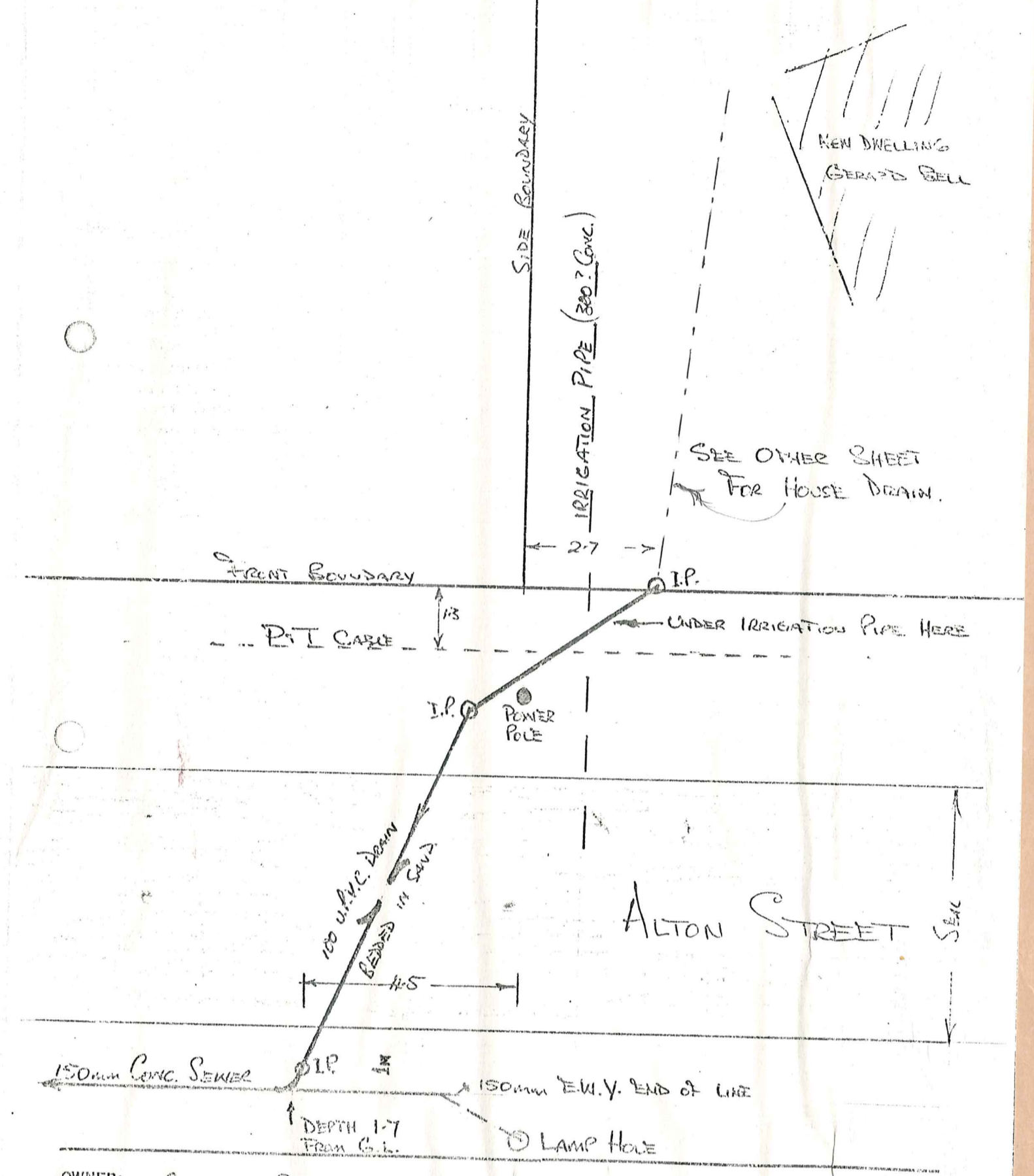
REFERENCE:
 I.T. — means Intercepting Trap
 F.A.I. — means Fresh Air Inlet
 I.P. — means Inspecting Pipe
 I.V. — means Inspection Junction

REFERENCE:
 Y.P. — means Junction Pipe
 G.T. — means Gully Trap
 W.C. — means Water Closet
 B.V. — means Back Vent

APPLICATION No. 1968
 M.V. — means Main Vent
 T.V. — means Terminal Vent
 I.C. — means Inspection Chamber
 D.P. — means Down Pipe

3812 B.C.C.

B. BELL SEWER CONNECTION
 As Built 17/5/79



OWNER: GERARD BELL

LOCATION: ALTON ST CHAKRAO

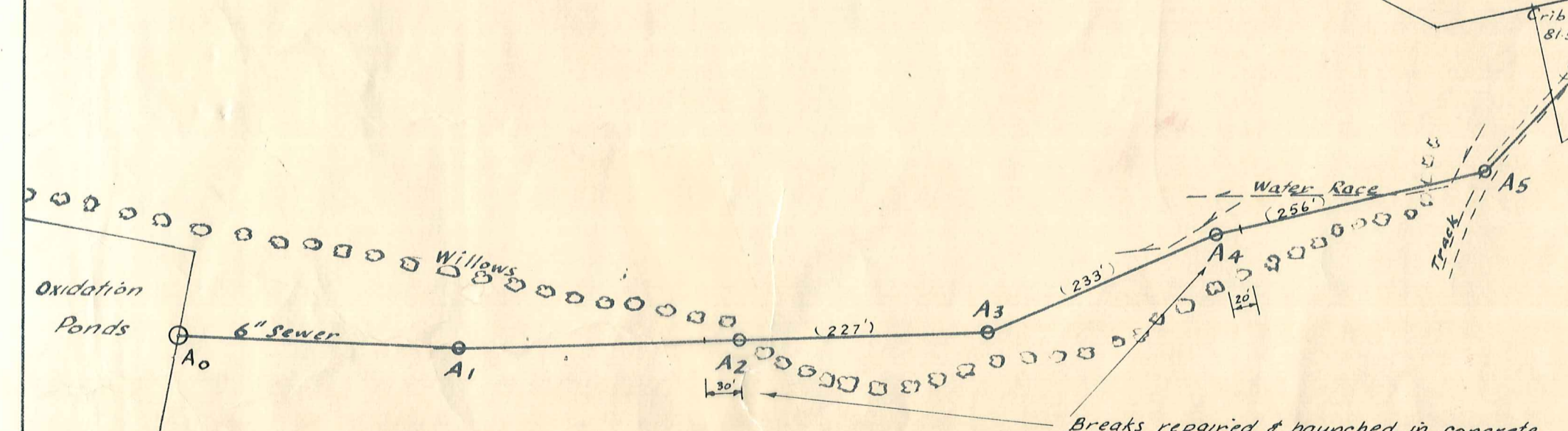
LOT No:

D.P.:

SECTION: 67

BLOCK: BELL 1968

SIGNATURE: R.E. Jolly Ltd (Registered Drainlayer)

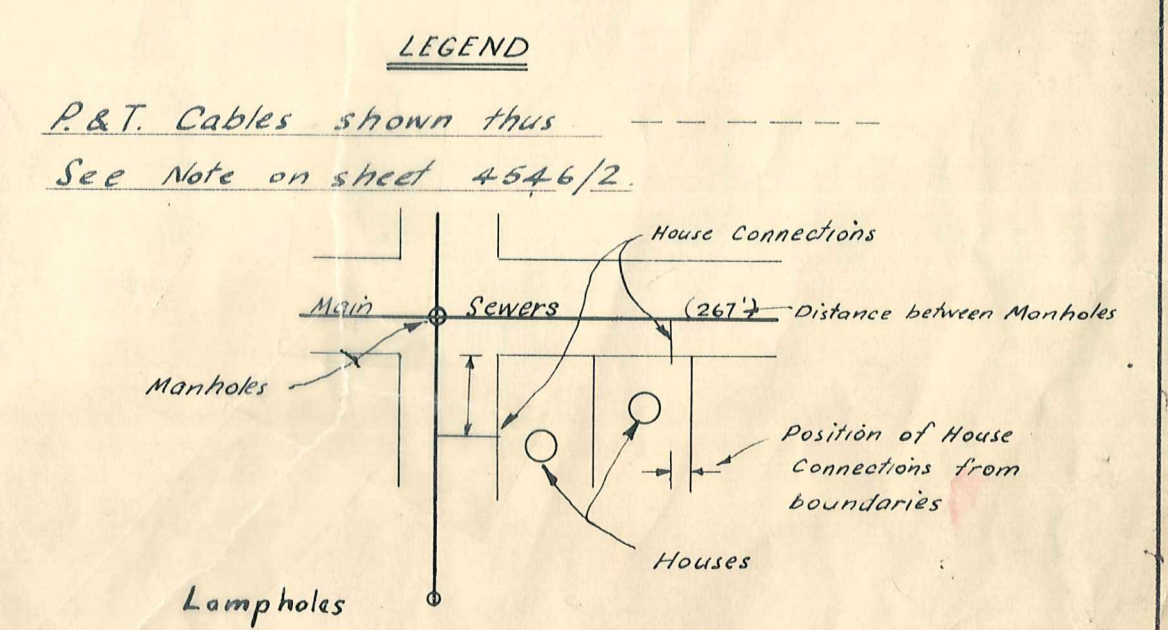


Note - Repair made between two pipes with stainless steel sleeve & surrounded with reinforced concrete

BENCHMARK LEGEND

Benchmarks shown thus: ●

No.	Description	Value
1.	Corner of conc. path.	83.23
2.	Top of S.E. gate post - Green house.	89.60
3.	Top N.E. conc gate post.	88.91
4.	Centre conc path at gate.	86.46
5.	Top of uphill conc gate post.	121.59
6.	Top white plaster wall.	103.26



DUFFILL WATTS & KING
CONSULTING CIVIL & STRUCTURAL
ENGINEERS
DUNEDIN & INVERCARGILL. N.Z.

VINCENT
COUNTY COUNCIL

OMAKAU SEWERAGE
AS BUILT

DRAWING
SEWER
RETICULATION

REFERENCE DRAWINGS		REVISIONS				Appr'd
Dept.	No.	No.	By	Date	Description	

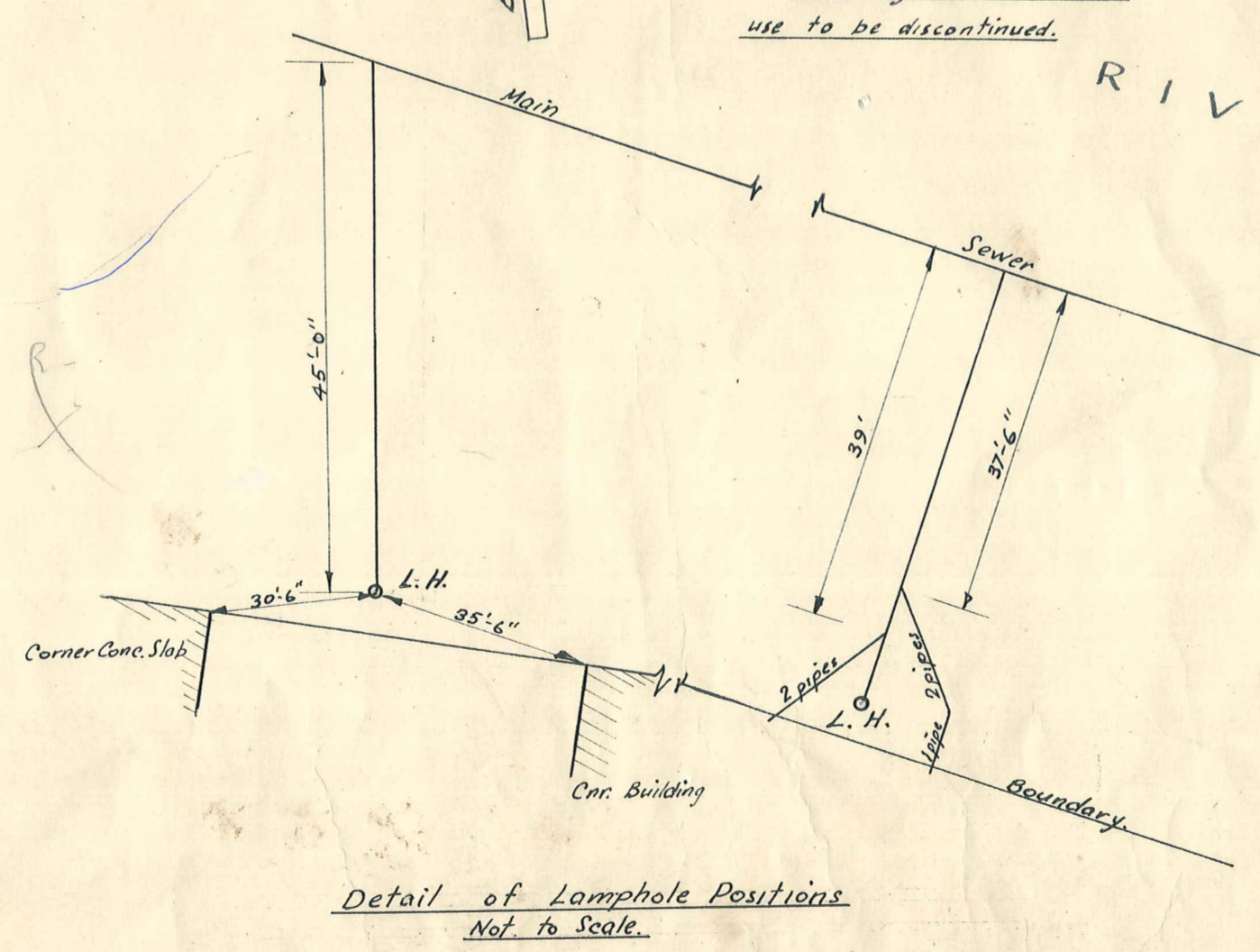
SCALES	NAME	DATE	SHEET No
2ch = 1"	G. J. Dillon	July 65	4546/1
CONTRACT No	Traced	Checked	Approved
	G. J. D.	July 65	Issue

BENCHMARK LEGEND

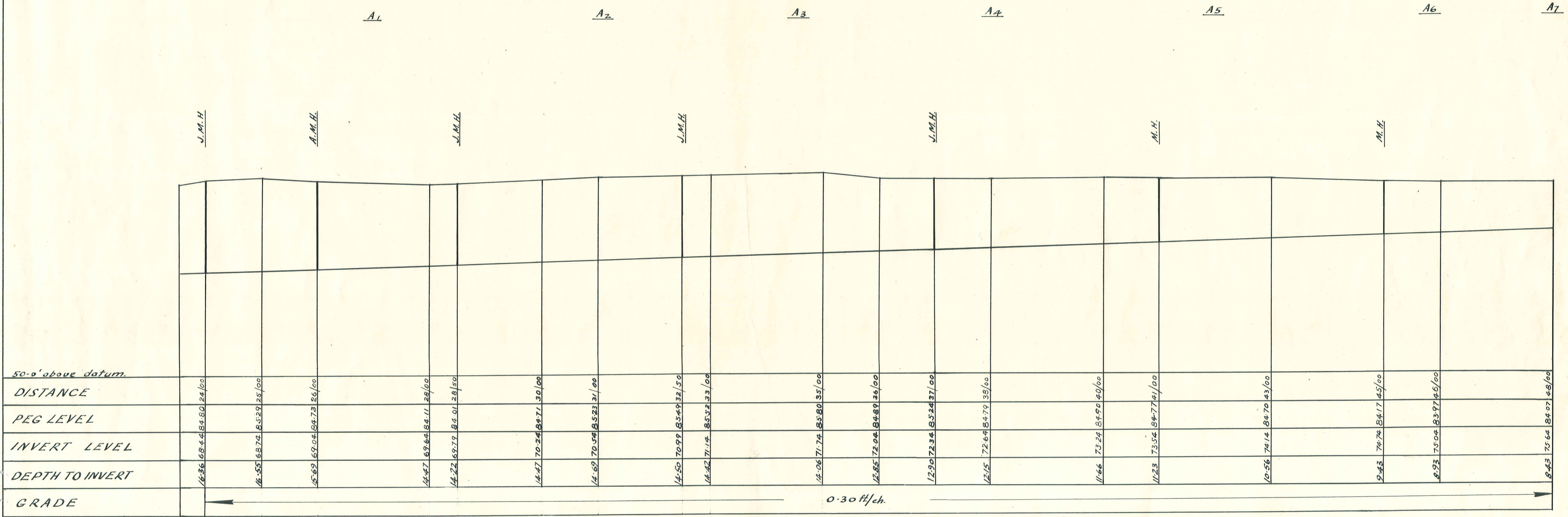
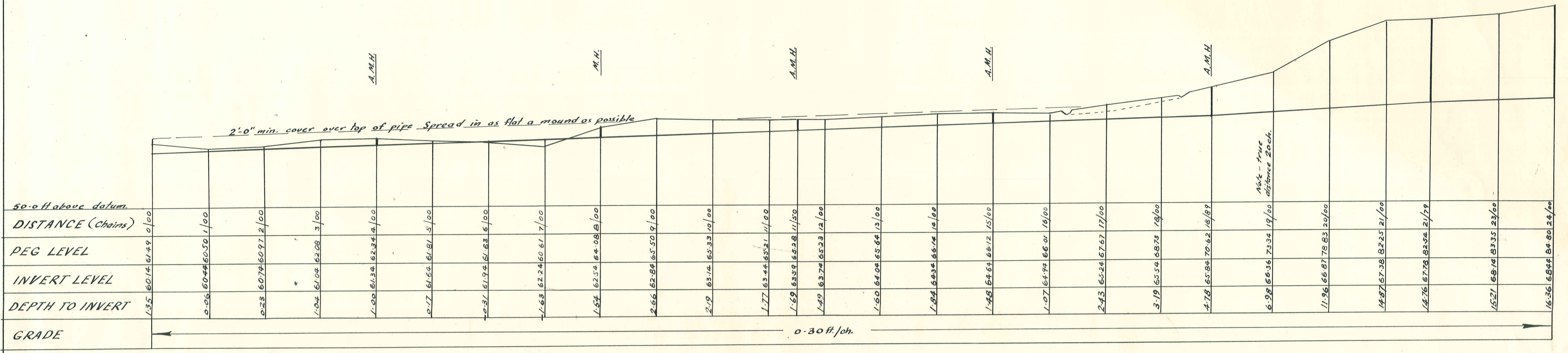
- Benchmarks shown thus: ● Value:
- 1. W. corner septic tank. 82.90.
 - 8. Corner of conc. upstand fuel bowers. 87.40
 - 9. End green & yellow conc. block wall. 92.88
 - 10. Top N. gate post. 92.79
 - 11. End of kerb. 95.59
 - 12. Centre of step-side door of Lodge Hall. 99.21
 - 13. Top conc. corner post triangular plot. 101.37



P.&T. Cable shown thus: ---
 The cables are shown in detail on P.&T. plans D1299 K1, L1, M1.



DUFFILL WATTS & KING CONSULTING CIVIL & STRUCTURAL ENGINEERS DUNEDIN & INVERCARGILL, N.Z.	VINCENT COUNTY COUNCIL	OMAKAU SEWERAGE AS BUILT	DRAWING SEWER RETICULATION	REFERENCE Dept. No.	DRAWINGS Description	REVISIONS No. By. Date. Description.	SCALES 2ch. = 1"	NAME G.J. Dillon	DATE July 65	SHEET No 4546/2
				CONTRACT No	App'd	Traced G.J.D.	July 65	ISSUE		



DUFFILL WATTS & KING
CONSULTING CIVIL & STRUCTURAL
ENGINEERS
DUNEDIN & INVERCARGILL. N.Z.

VINCENT
COUNTY COUNCIL

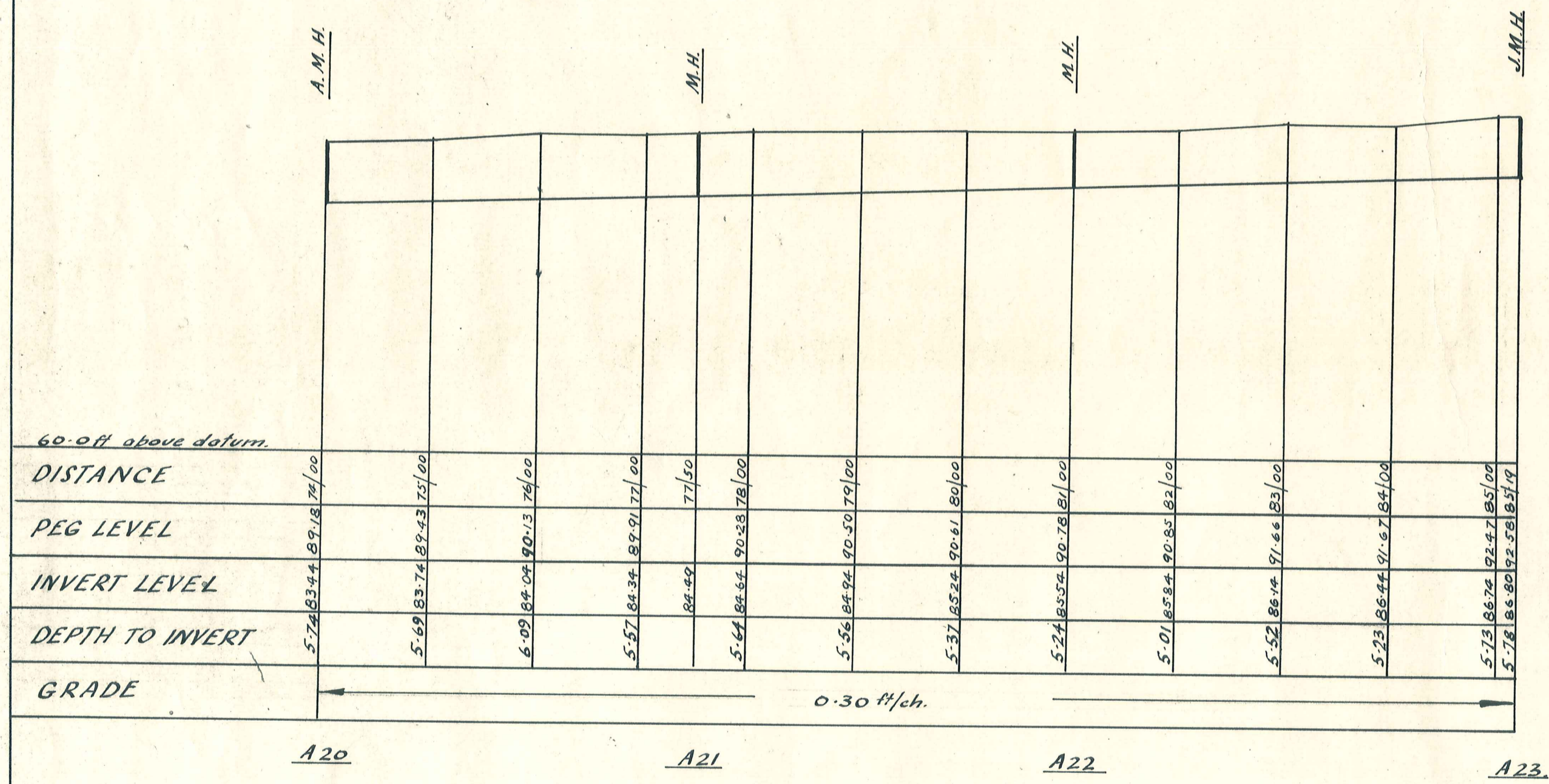
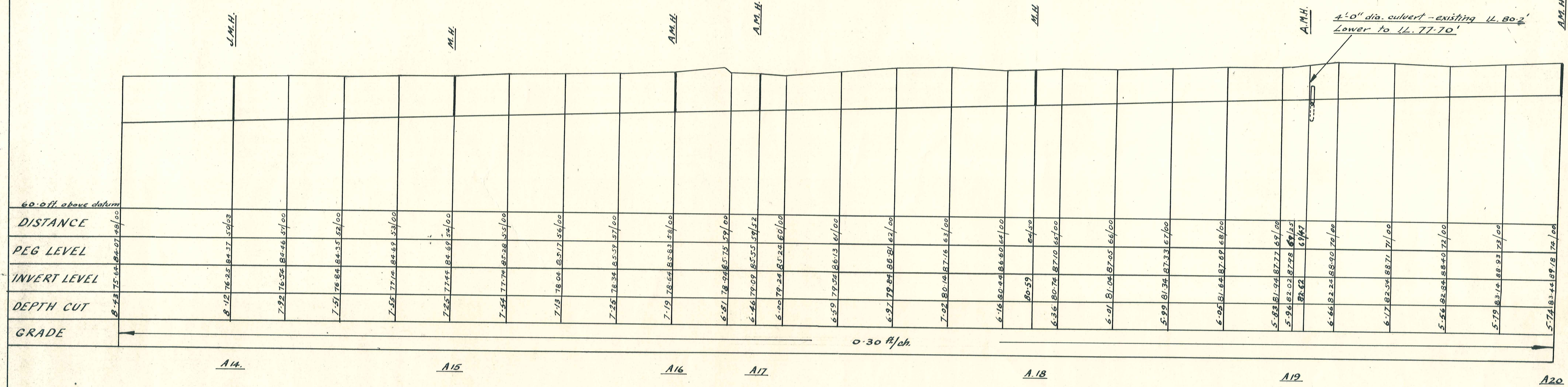
OMAKAU SEWERAGE
AS BUILT

DRAWING
LONGSECTION
'A' LINE

REFERENCE DRAWINGS		REVISIONS			
Dep't.	No.	No.	By.	Date.	Description.

SCALES
Horiz. - 1 in = 1 ch.
Vert. - 1 in = 10 ft.

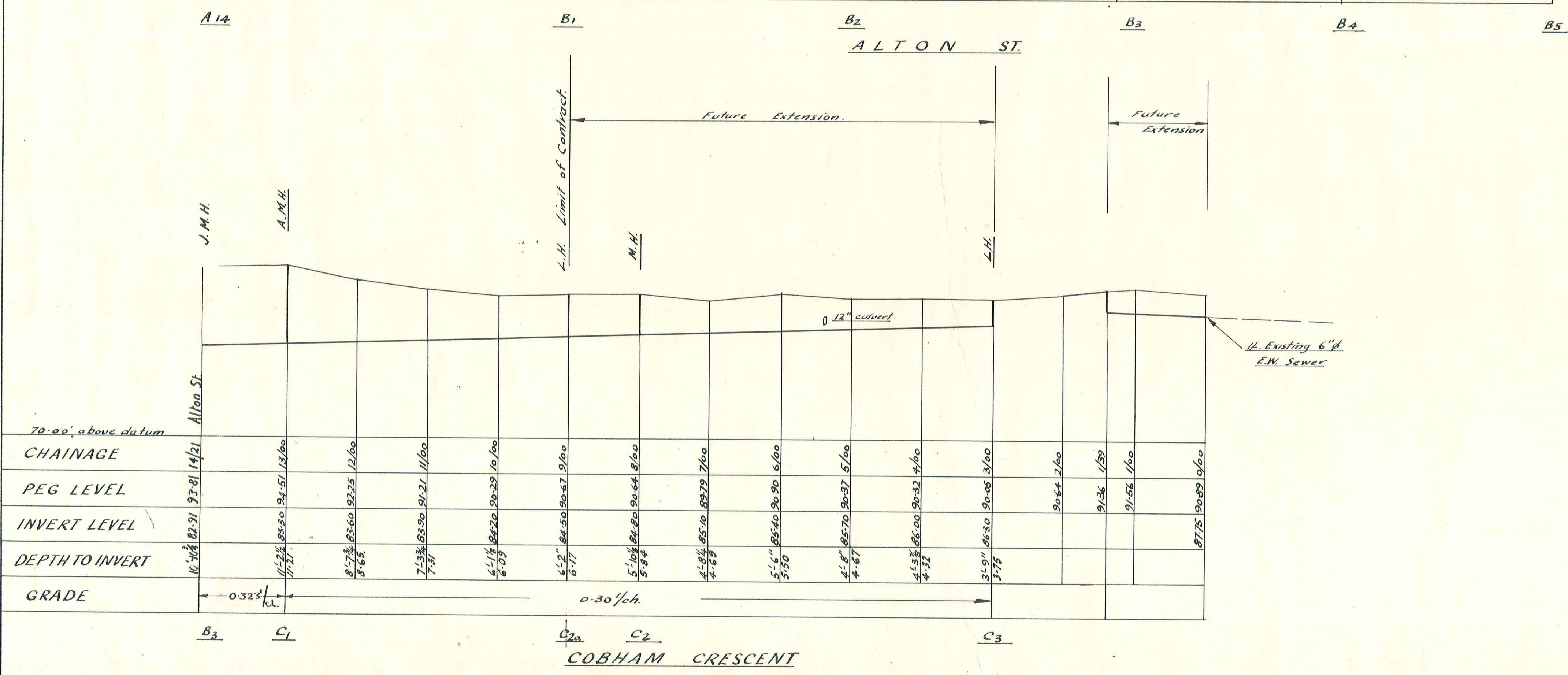
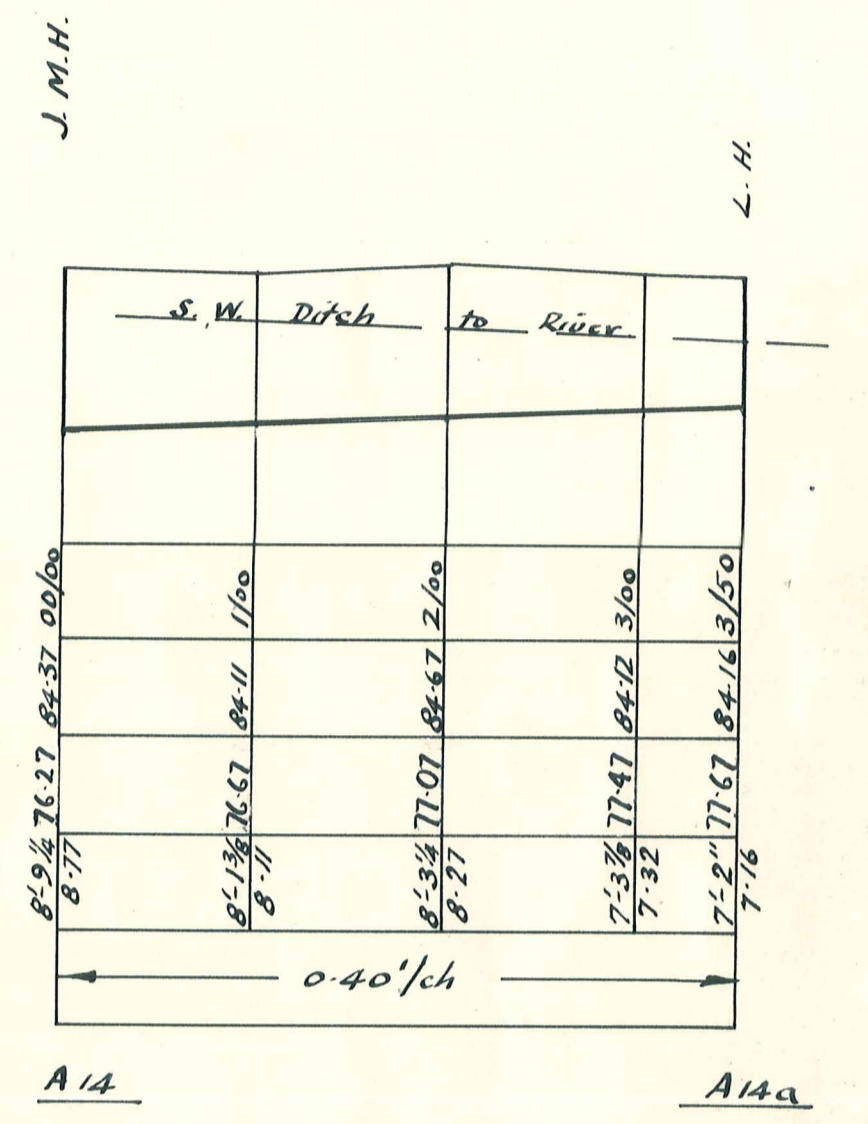
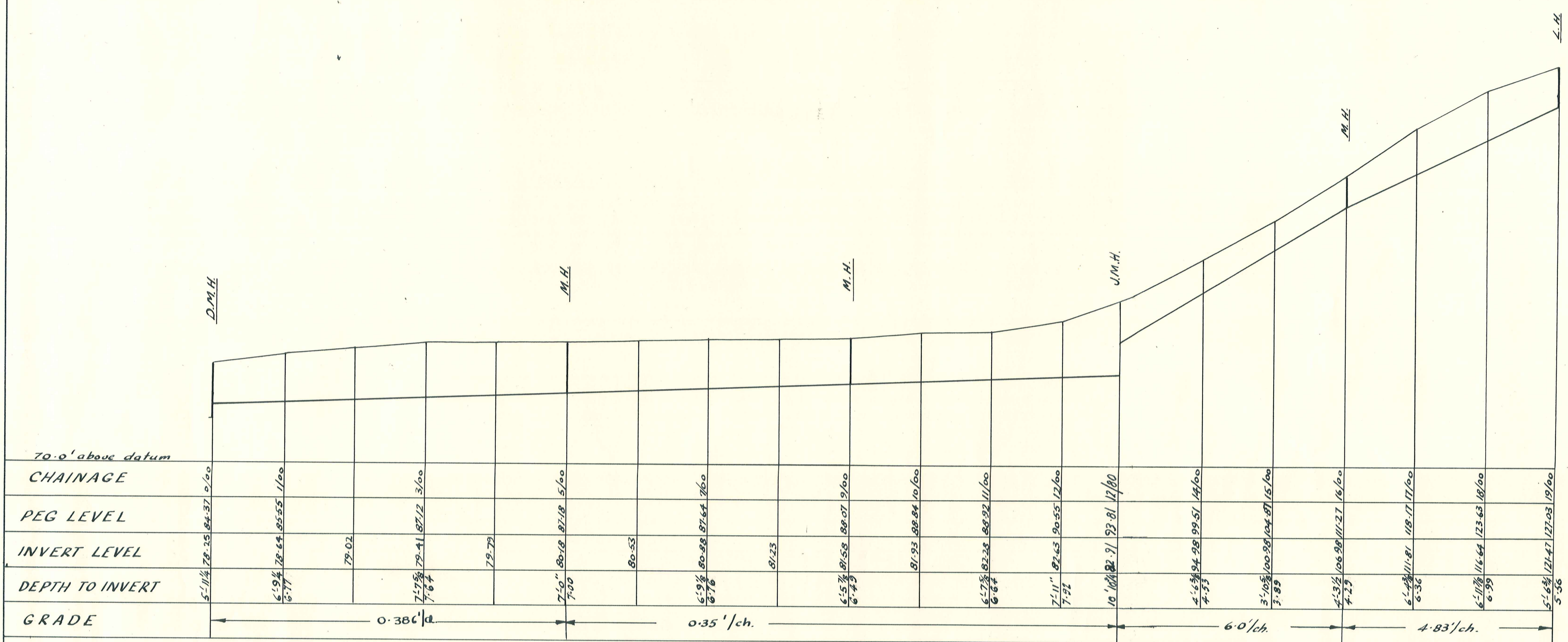
NAME	DATE	SHEET No
Surveyed. G.I. Dillon	July 65	4546
Drawn. " "	" "	
Checked. R. Ryan G.P.	Aug 65	
Approved. [Signature]	Aug 65	



LL. of Existing M. H. 86-18

4'-0" dia. culvert - existing LL. 80-2
Lower to LL. 77-10'

DUFFILL WATTS & KING CONSULTING CIVIL & STRUCTURAL ENGINEERS DUNEDIN & INVERCARGILL. N.Z.	VINCENT COUNTY COUNCIL OMAKAU SEWERAGE AS BUILT	DRAWING LONGSECTION 'A' LINE	REFERENCE DRAWINGS		REVISIONS		SCALES Horiz. - 1" = 1ch. Vert. - 1" = 10ft	CONTRACT No	NAME G.I. Dillon	DATE July 65	SHEET No 4546/4
			Dep't. No.	Description.	No.	By.					



DUFFILL WATTS & KING
CONSULTING CIVIL & STRUCTURAL
ENGINEERS
DUNEDIN & INVERCARGILL. N.Z.

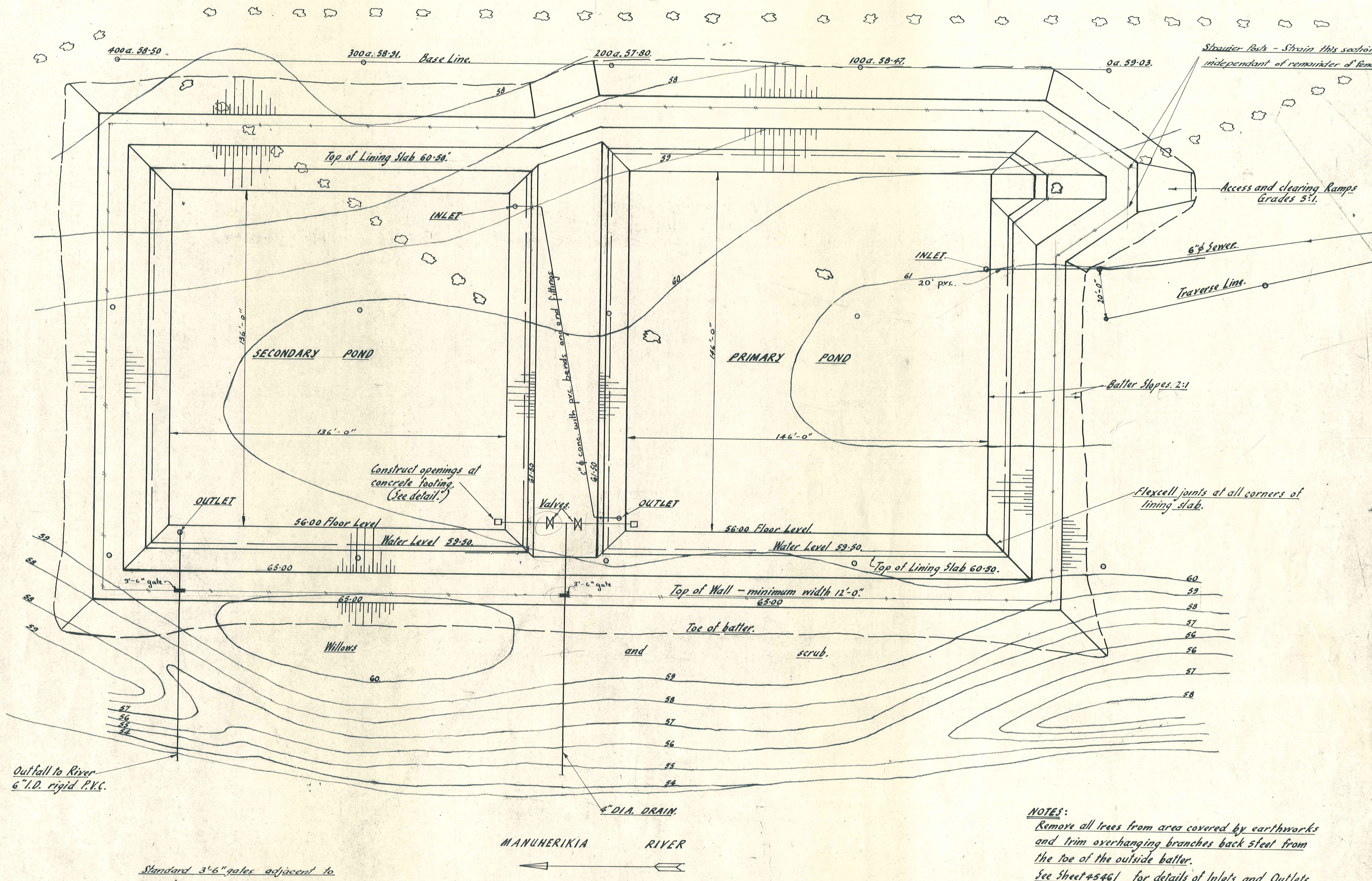
VINCENT
COUNTY COUNCIL

OMAKAU SEWERAGE
AS BUILT

DRAWING
LONGSECTIONS

REFERENCE		DRAWINGS		REVISIONS			SCALES	
Dep't.	No.	Description.	No.	By	Date	Description.	Appr'd	CONTRACT No

NAME	DATE	SHEET No
Surveyed: G. J. Dillon	July 65	4546/5
Drawn: " "	" "	
Calculations: G. J. D.	" "	
Traced: " "	" "	
Checked: " "	" "	
NAME	DATE	ISSUE
Approved: [Signature]	Oct 65	



Strainer Posts - Strain this section independent of remainder of fence

Access and clearing Ramps Grades 5:1.

6" Sewer.
Traverse Line.

Batter Slopes 2:1

Flexcell joints at all corners of lining slab.

Construct openings at concrete footing (See detail.)

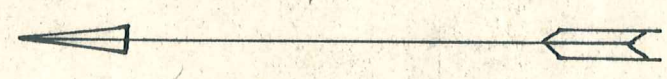
Valves

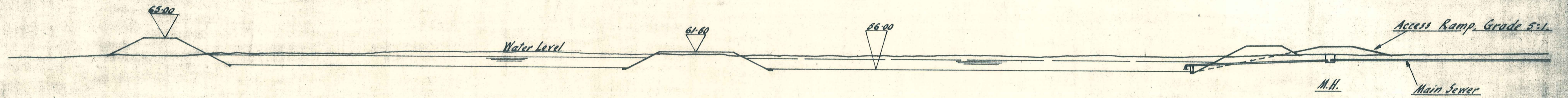
c. & conc. with pvc. bends and end fittings 61-50

Standard 3'-6" gates adjacent to all inlets and outlets

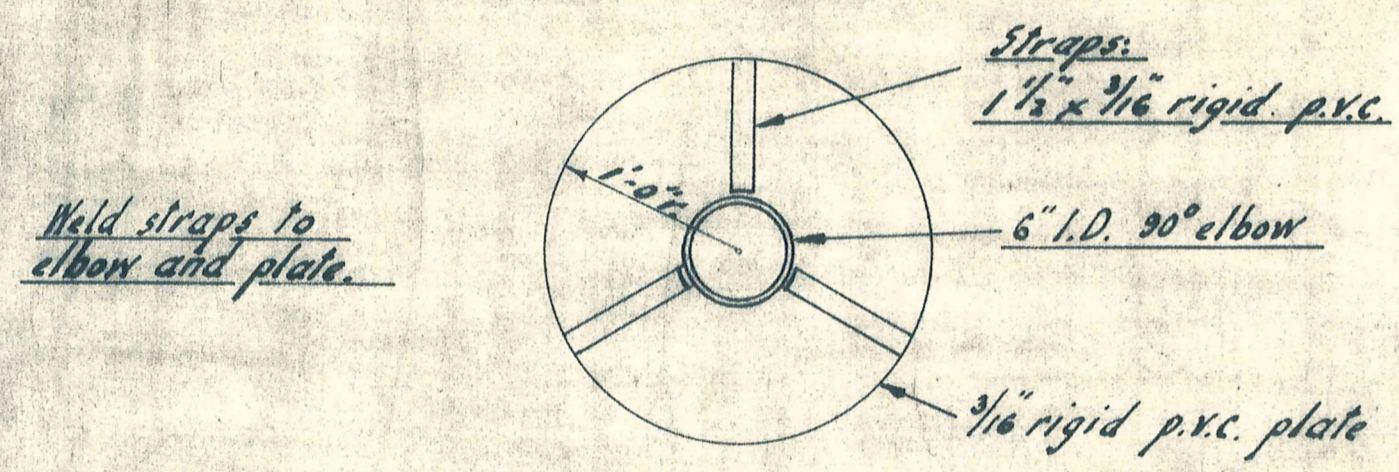
NOTES:
Remove all trees from area covered by earthworks and trim overhanging branches back 5feet from the toe of the outside batter.
See Sheet 4546J for details of Inlets and Outlets.

MANUHERIKIA RIVER

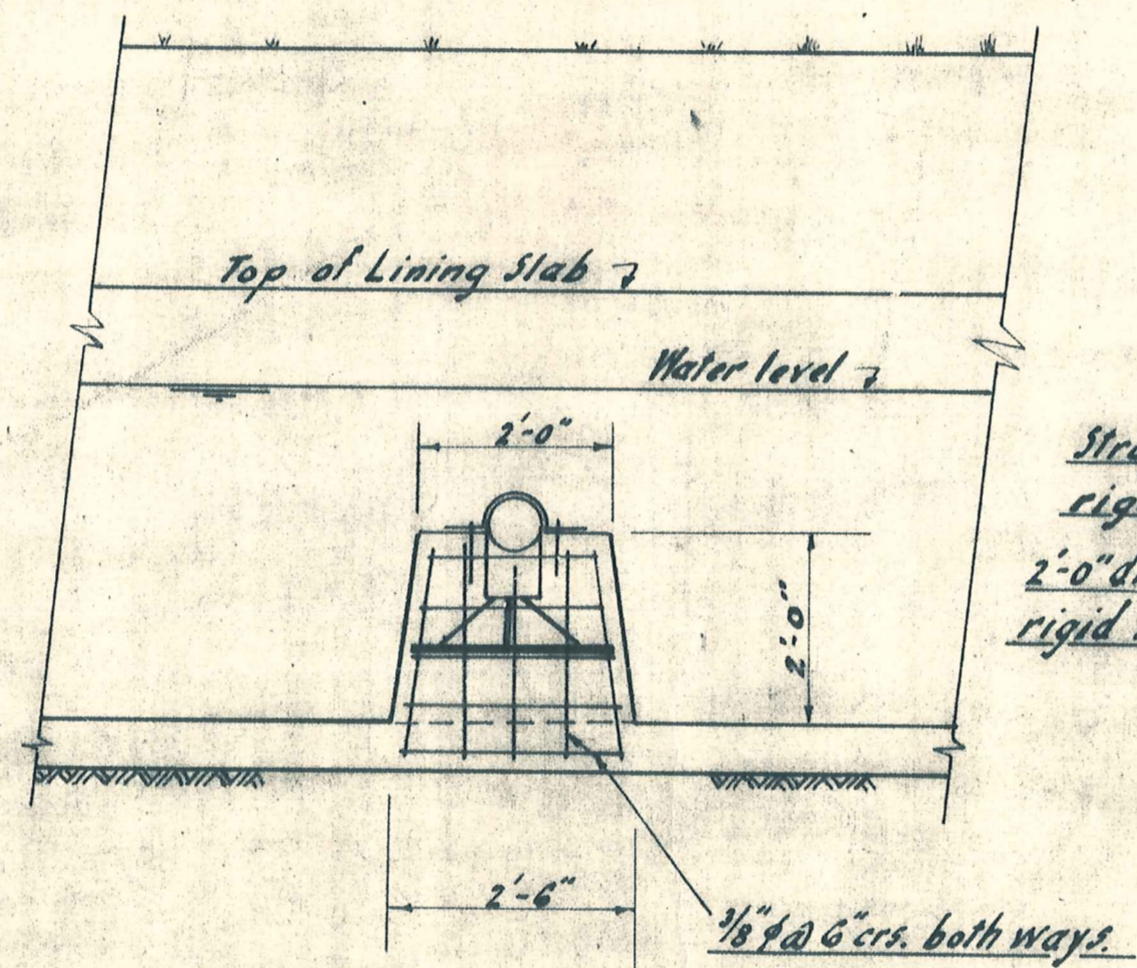




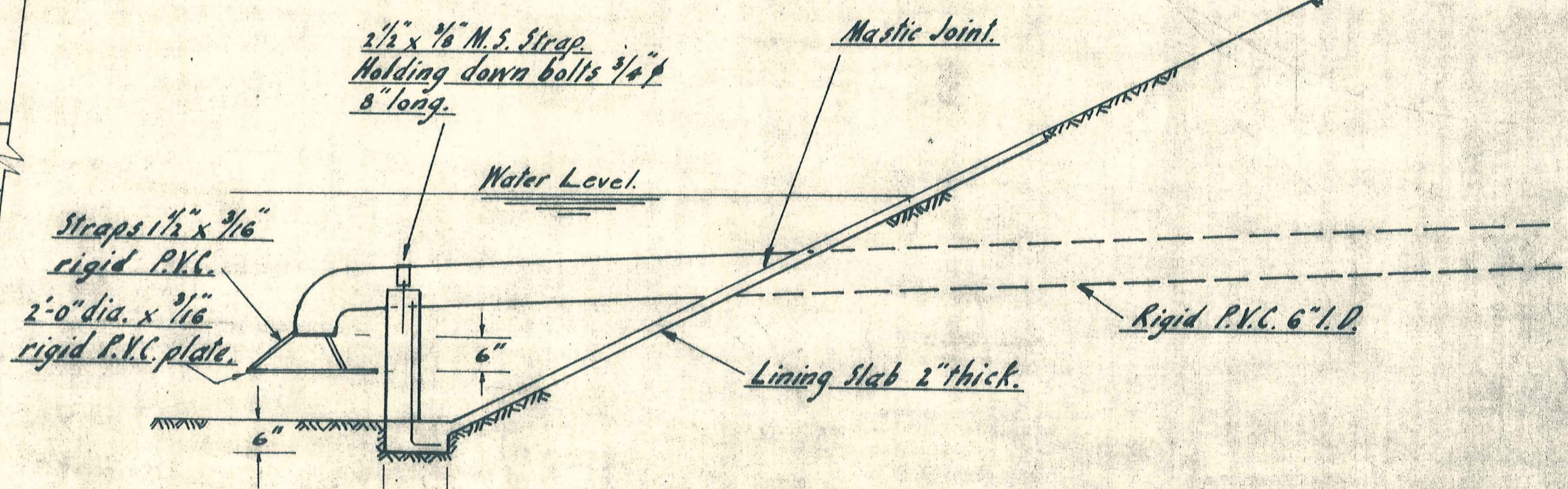
LONG SECTION THROUGH PONDS
Scale: 20'-0" to 1 in



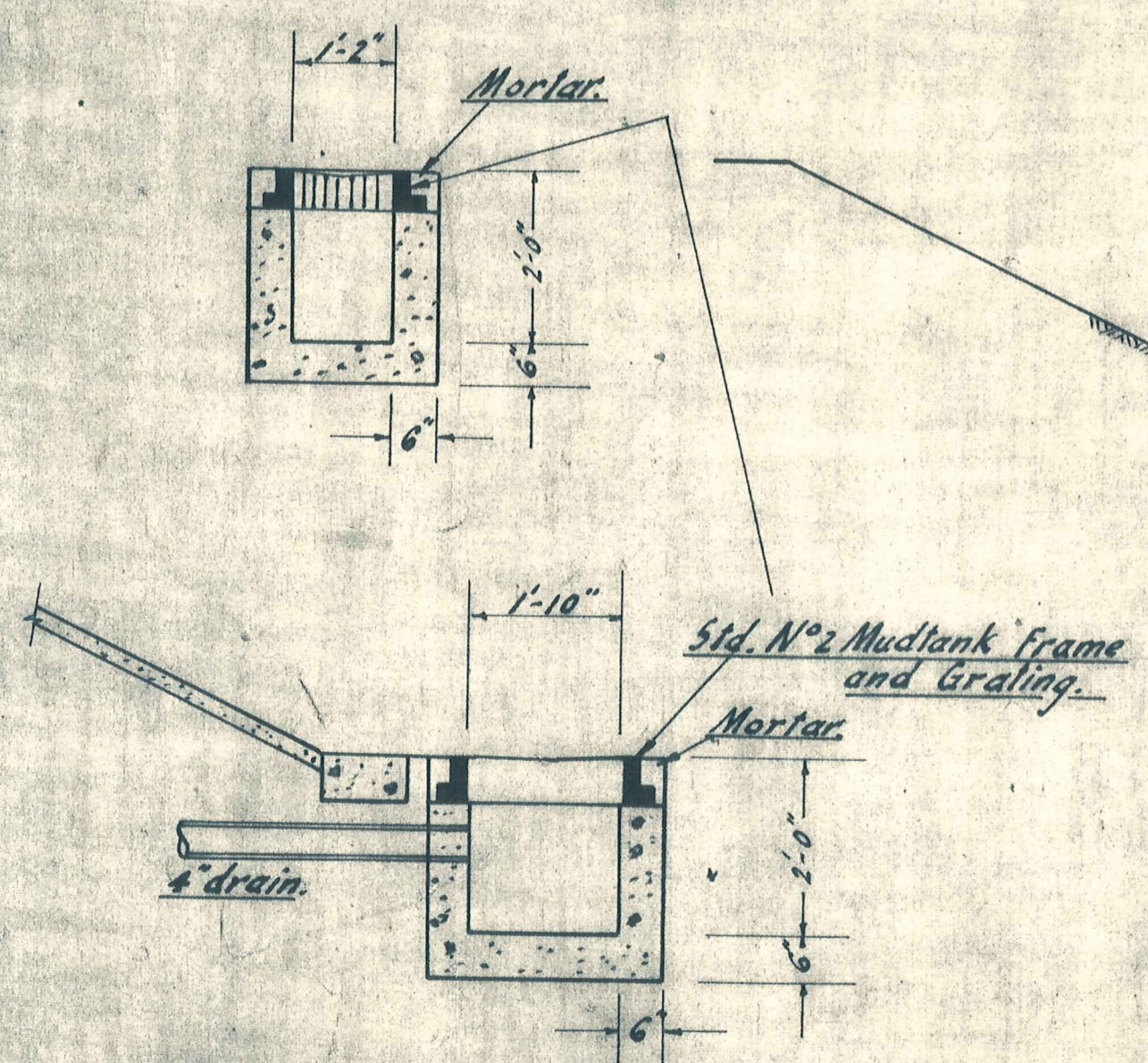
DETAIL OF DEFLECTION PLATE
Scale: 1" to 1'-0"



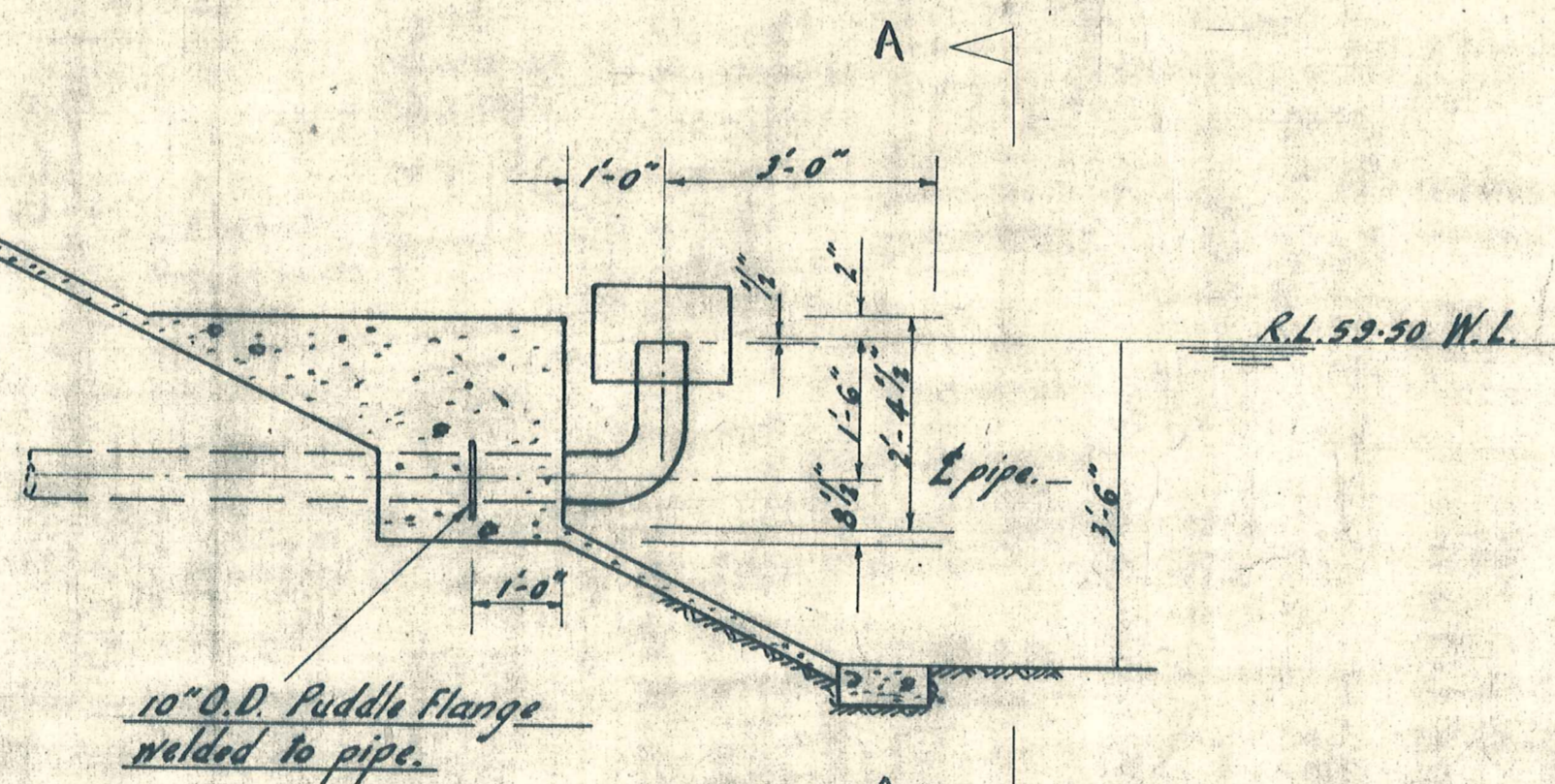
ELEVATION AT INLET
Scale: 1/2" to 1'-0"



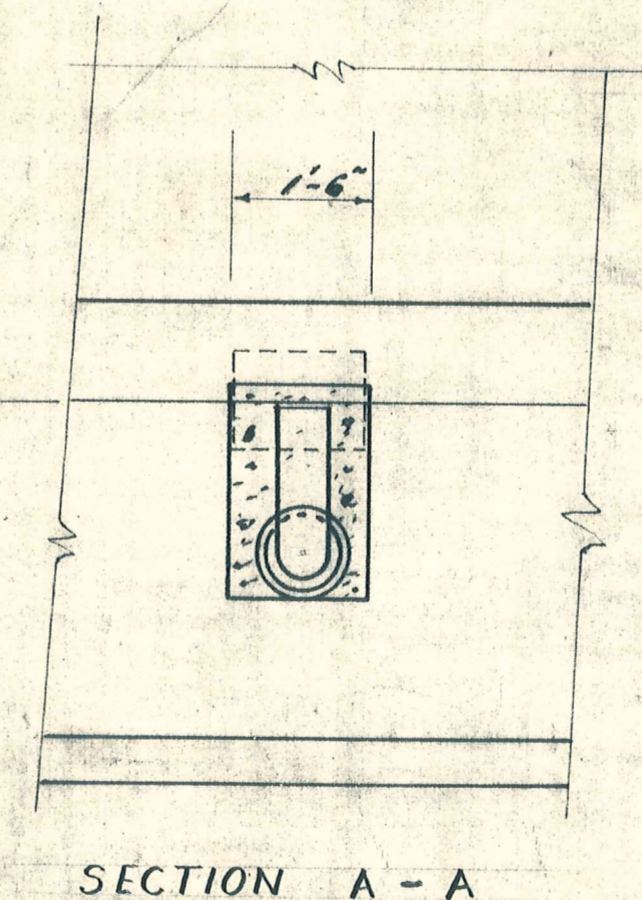
MAIN SEWER INLET DETAIL
Scale: 1/2" to 1'-0"



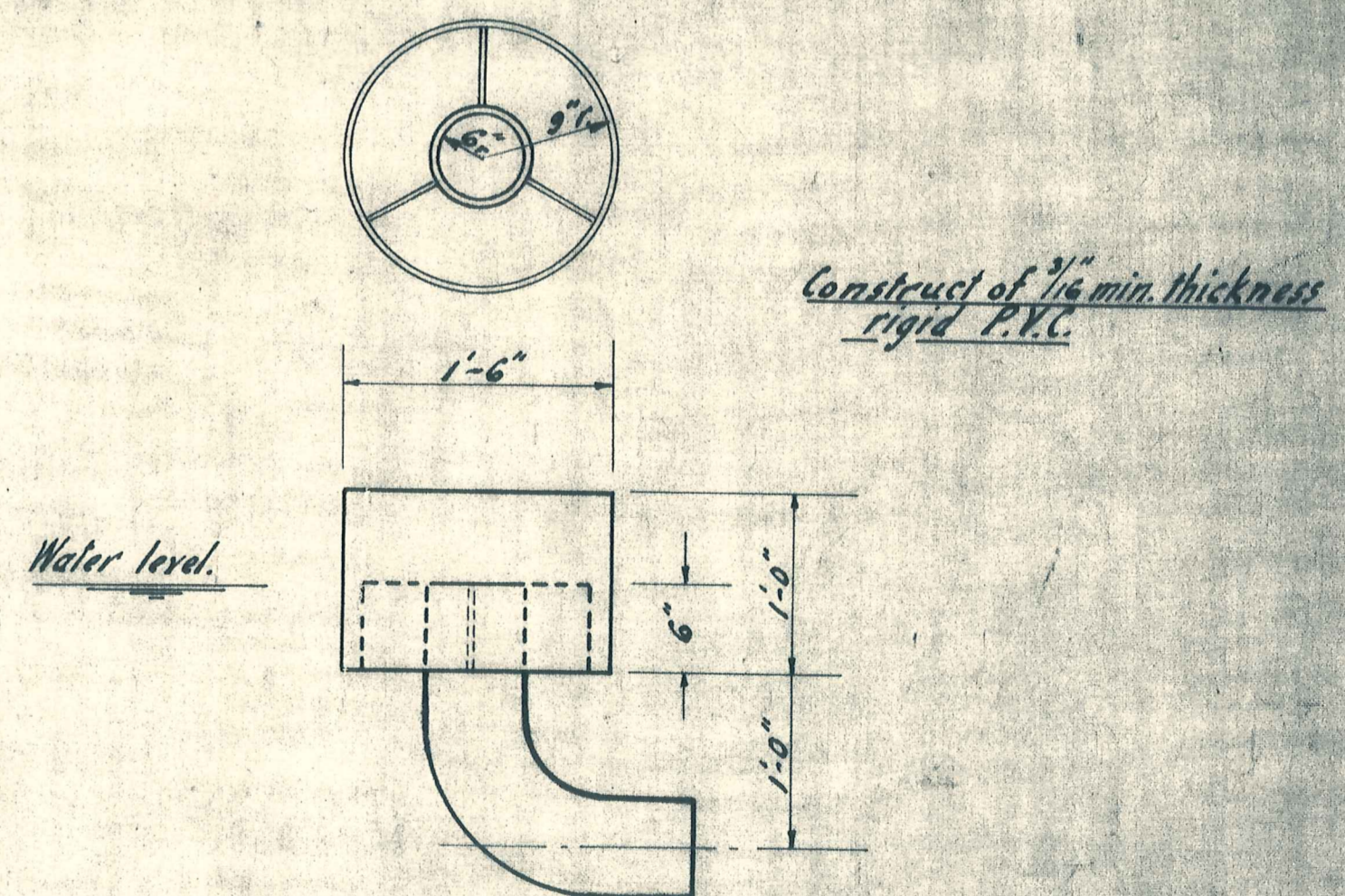
DETAIL OF DRAIN SUMP
Scale: 1/2" to 1'-0"



DETAIL OF OUTLET AND ENDS OF CONNECTING PIPE
Scale: 1/2" to 1'-0"



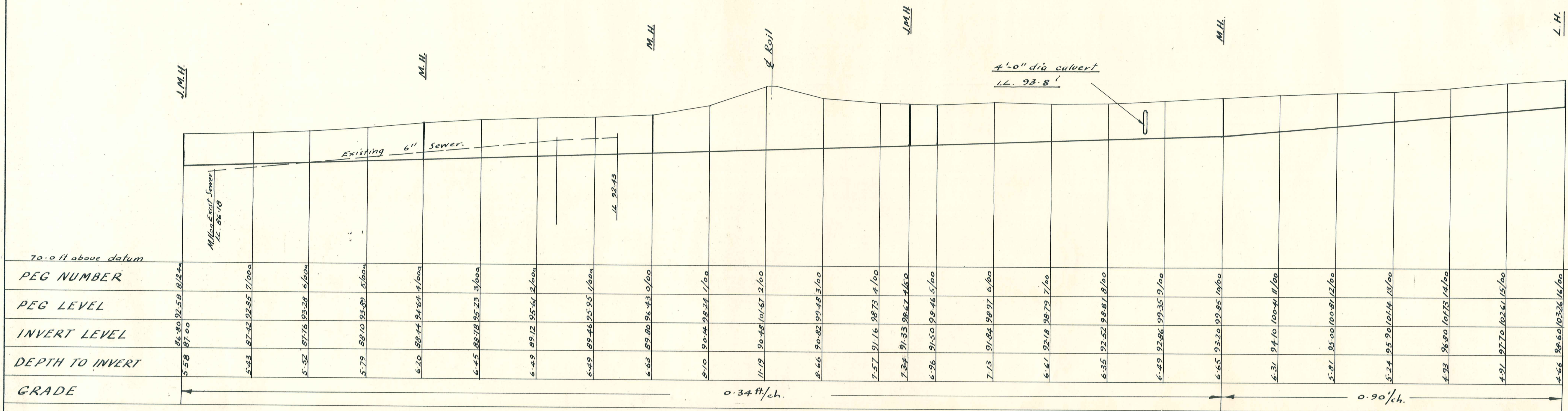
SECTION A - A



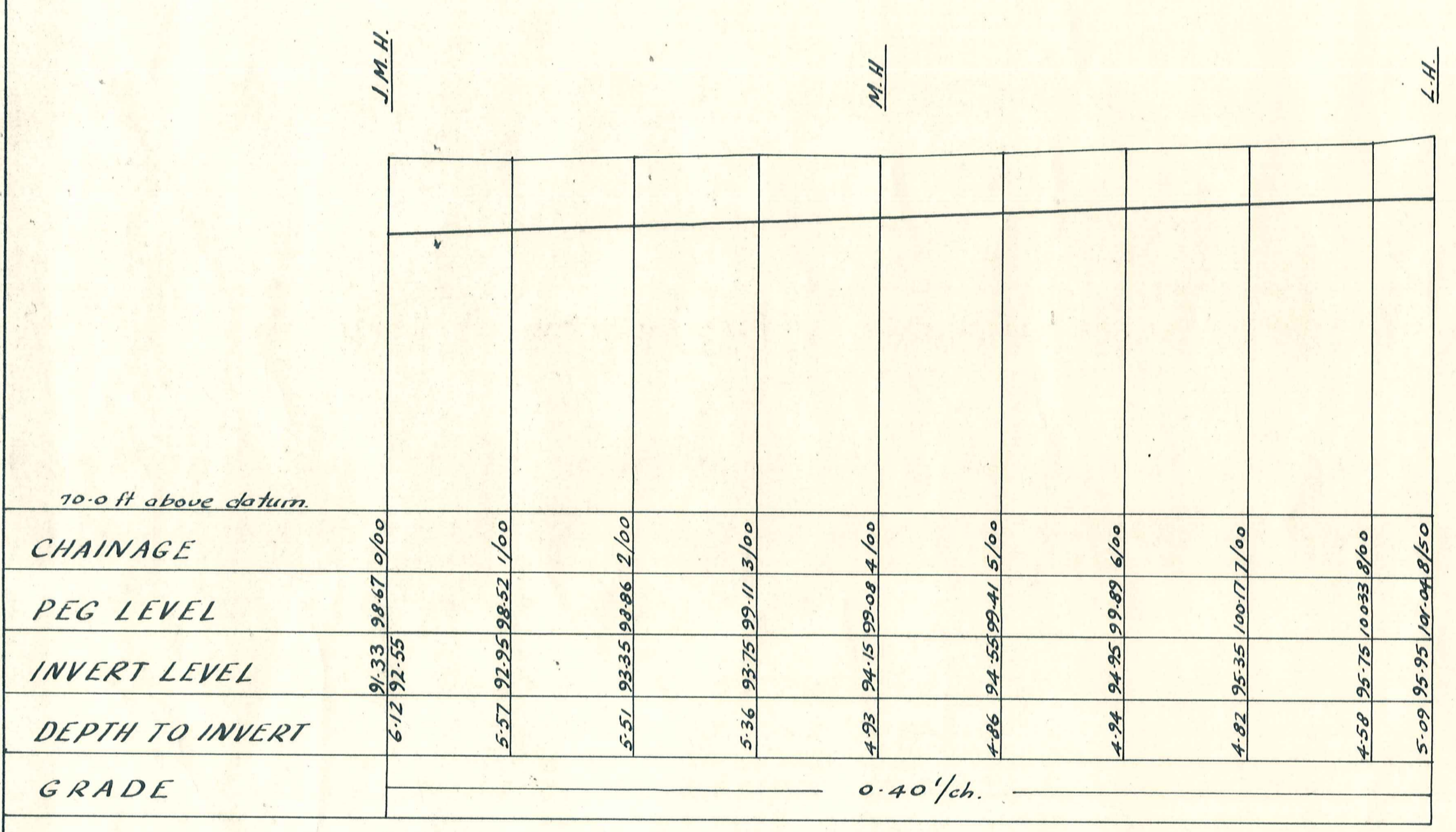
DETAIL OF INLET-OUTLET FITTING
Scale: 1" to 1'-0"

REFERENCE DRAWINGS		REVISIONS			
Dep't. No.	Description	No.	By	Date	Description

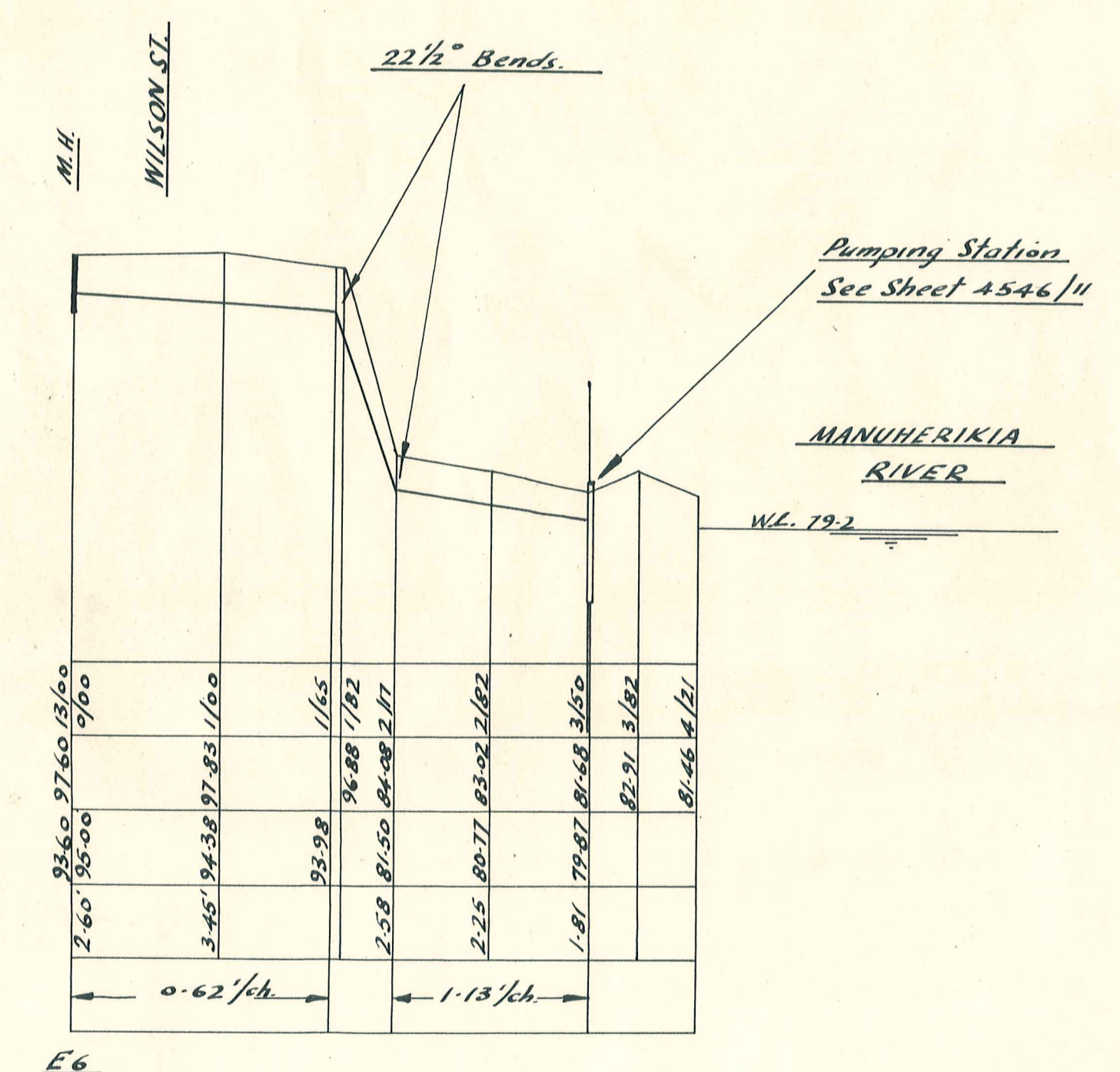
SCALES		NAME		DATE	SHEET No.
1 ft to 1 inch					
1/2 inch to 1 foot					
CONTRACT No.					



HARVEY ST.



SCHOOL ST.



4" dia. FLUSHING LINE FROM RIVER.

