

NOTE :- Existing Sewerage —  
 Sewerage Proposal Scheme A —  
 " " " B —  
 " " " C —

Scale: 200<sup>H</sup> to 1<sup>IN</sup> (approx 3 ch to 1 in)  
 NOTE: X IP Indicates position of inspection eyes  
 □ Manholes thus  
 ○ Houses thus

VINCENT COUNTY COUNCIL OMAKAU SEWERAGE SCHEME LOAN PROPOSAL

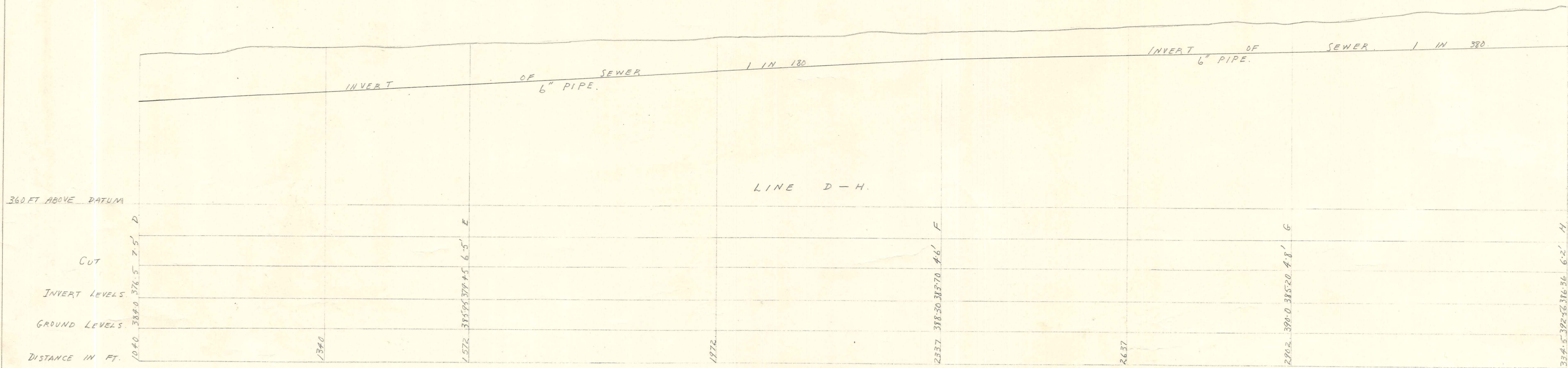
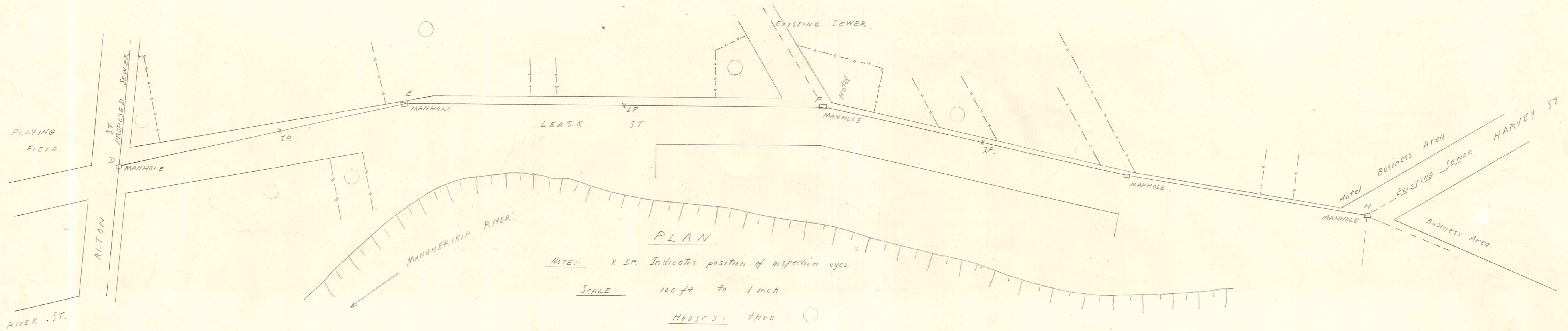
FIRST OF 3

*A. Beck*  
 COUNTY ENGINEER  
 11 NOV 1959

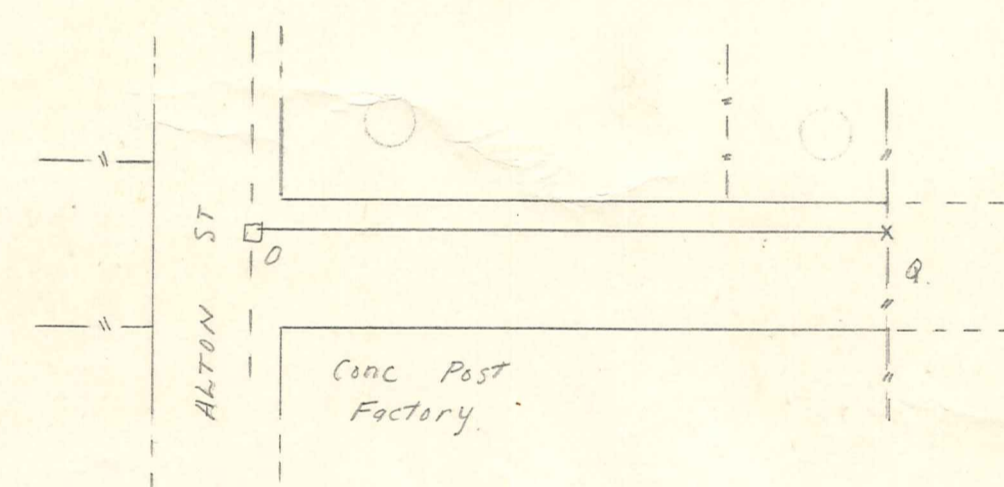
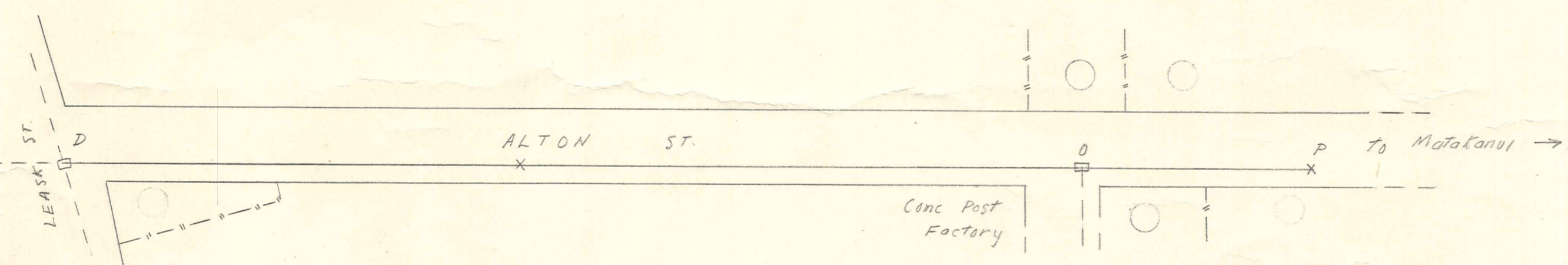
SURVEYED BY	NAME	DATE
DRAWN		
CHECKED		
CALCULATED		
TRACED		

143/4

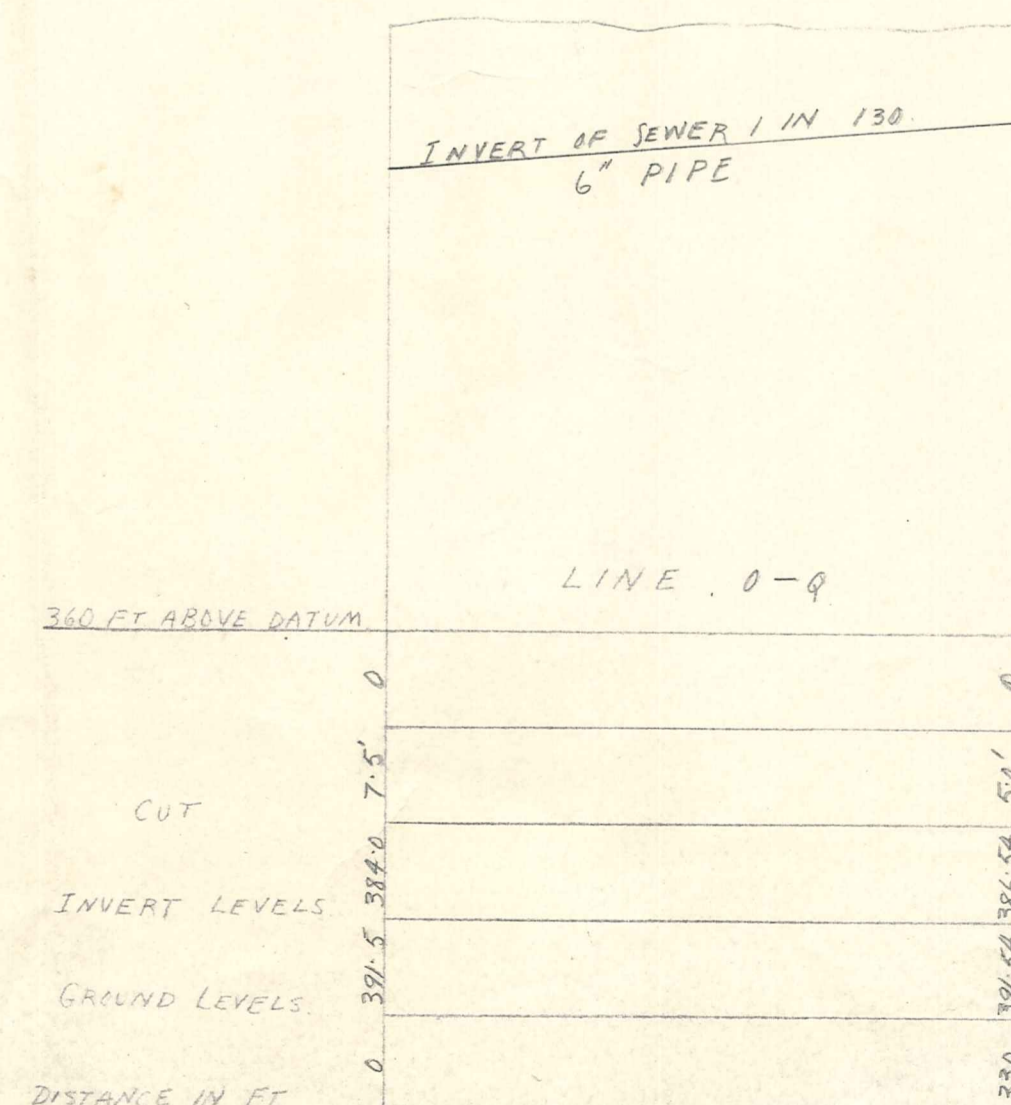
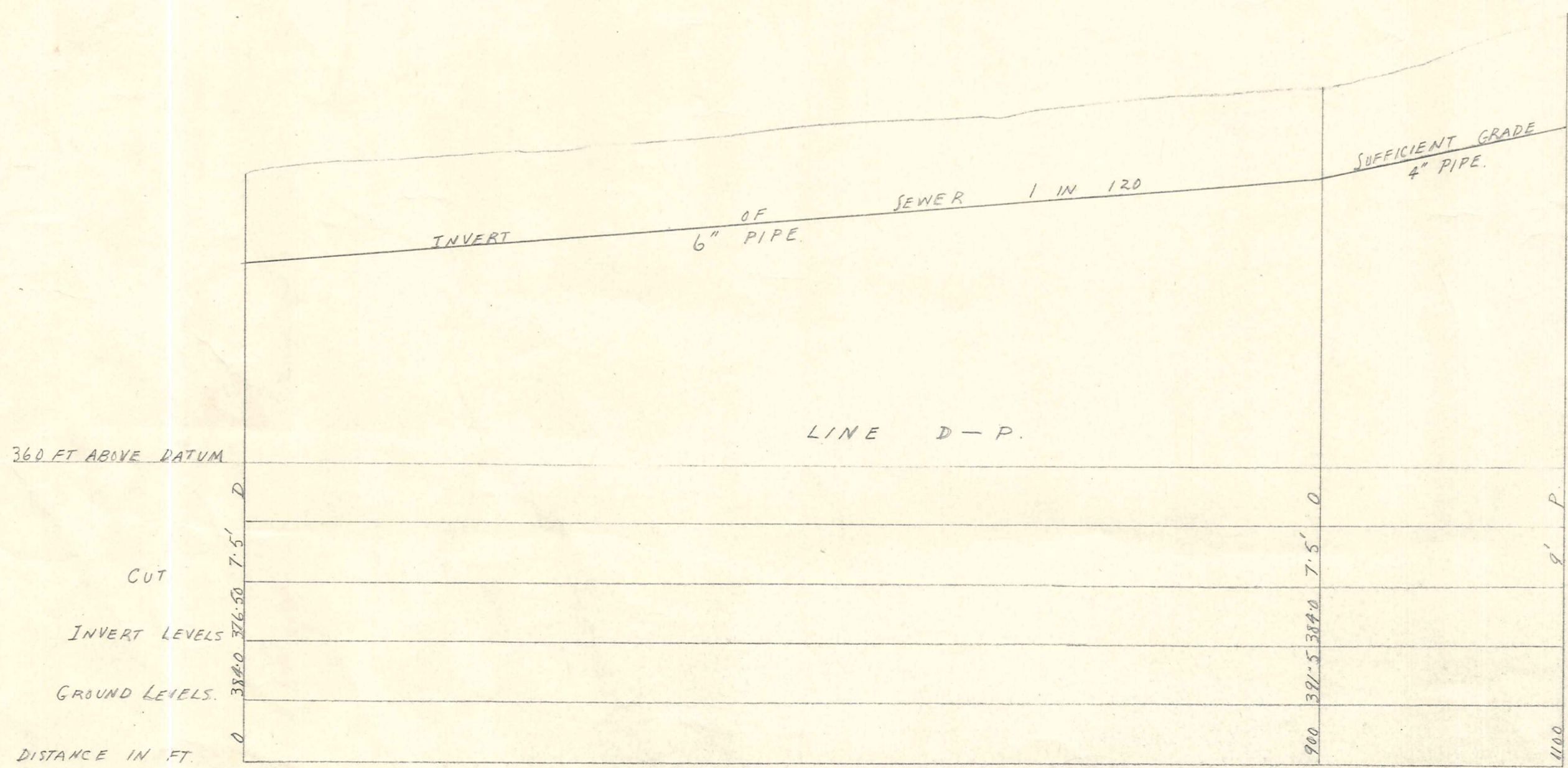




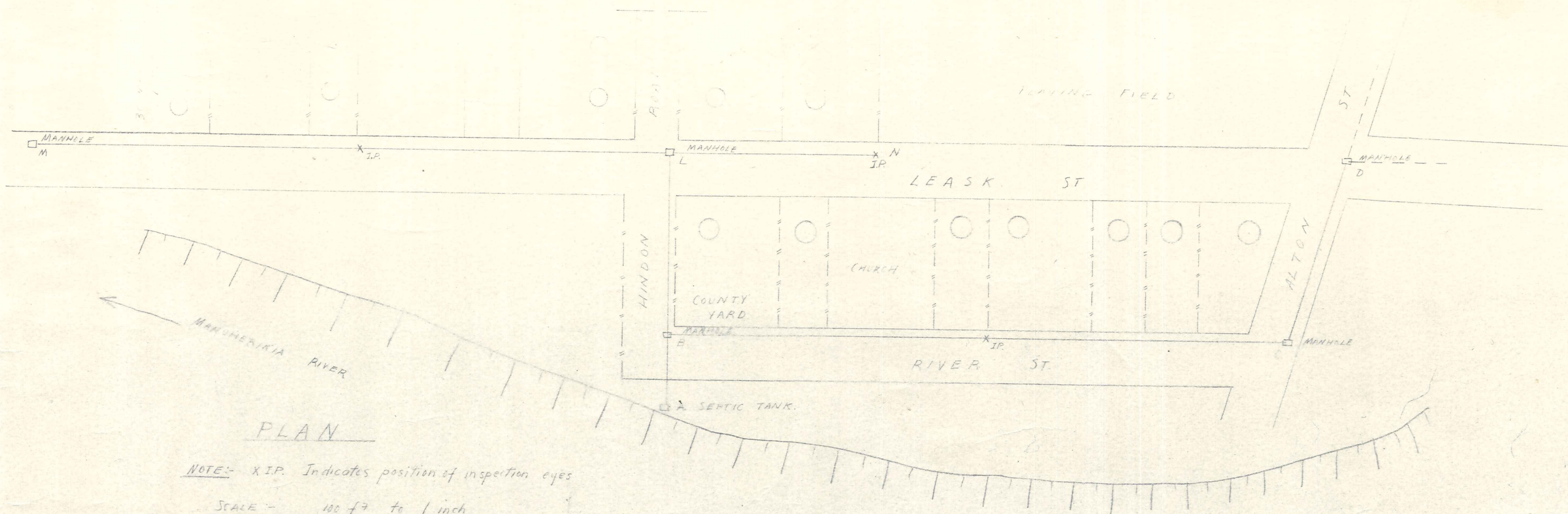
SCALE: Horizontal 100 ft to 1 inch  
Vertical 10 ft to 1 inch.



SCALE: Horizontal 100 ft to 1 inch  
Vertical 10 ft to 1 inch.





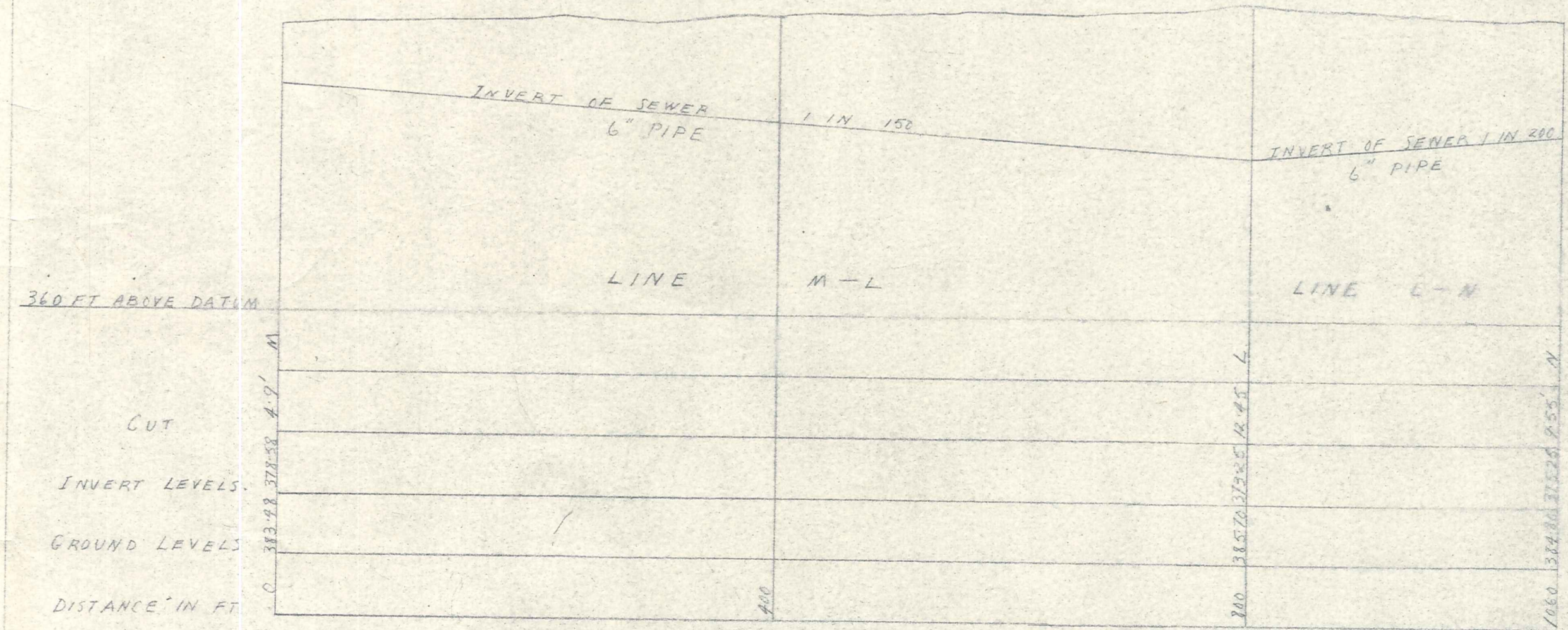
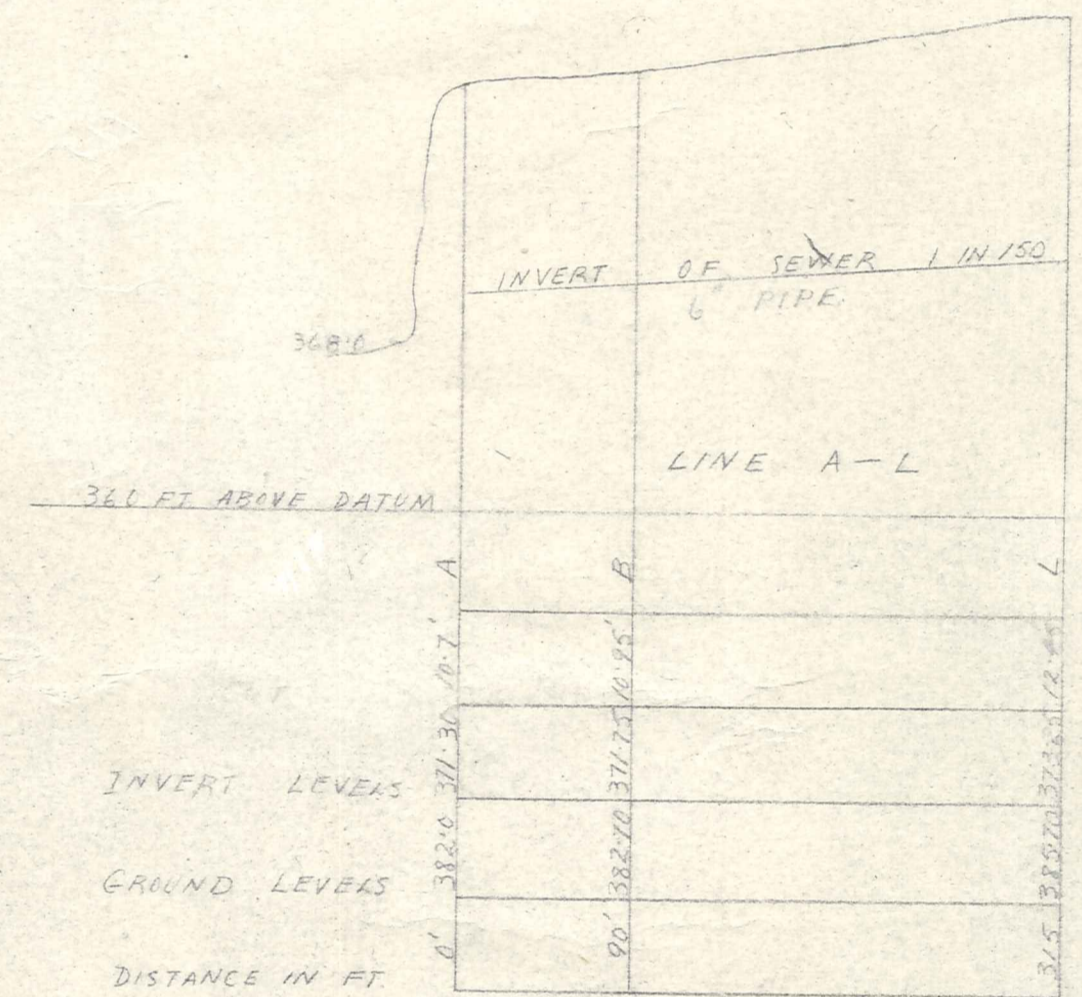
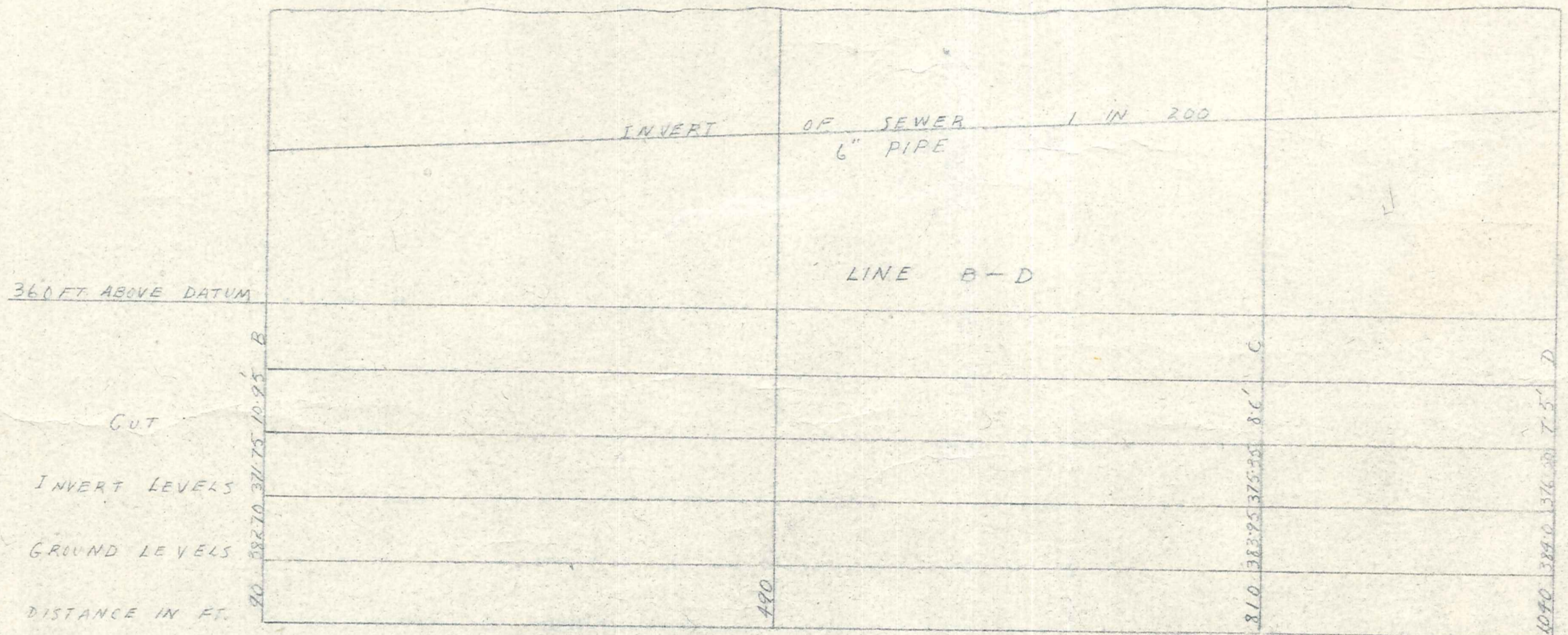
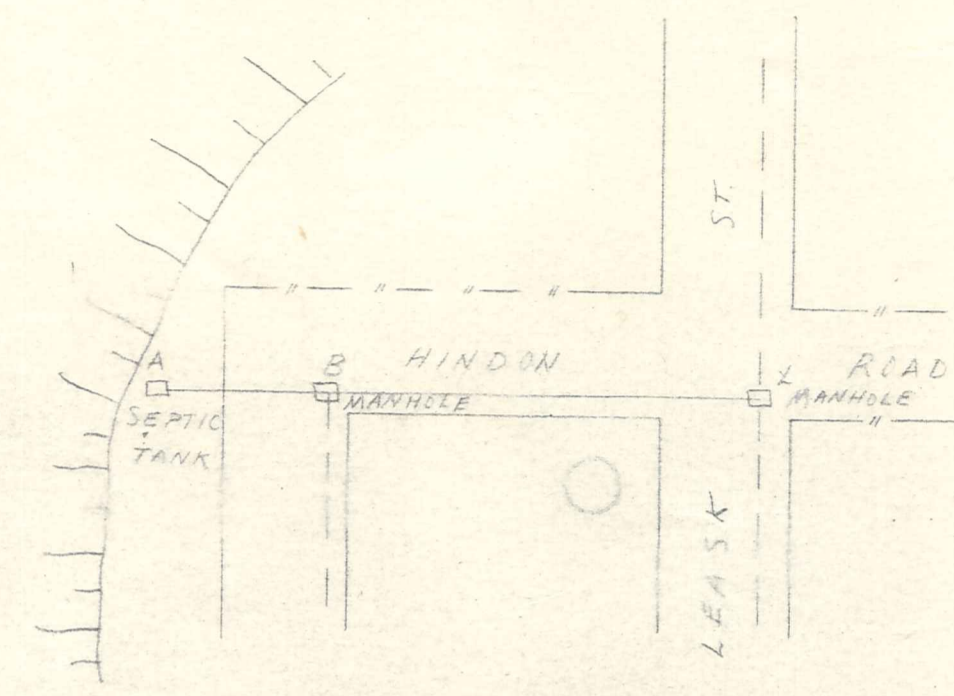


PLAN

NOTE: X.I.P. Indicates position of inspection eyes

SCALE - 100 ft to 1 inch

HOUSES - THIS



SCALE: Horizontal 100 ft to 1 inch  
Vertical 10 ft to 1 inch

143/4

VINCENT COUNTY COUNCIL OMAKAU SEWERAGE LOAN PROPOSAL

K. Beck  
11 NOV 1959

THIRD OF 3

NO.	DATE