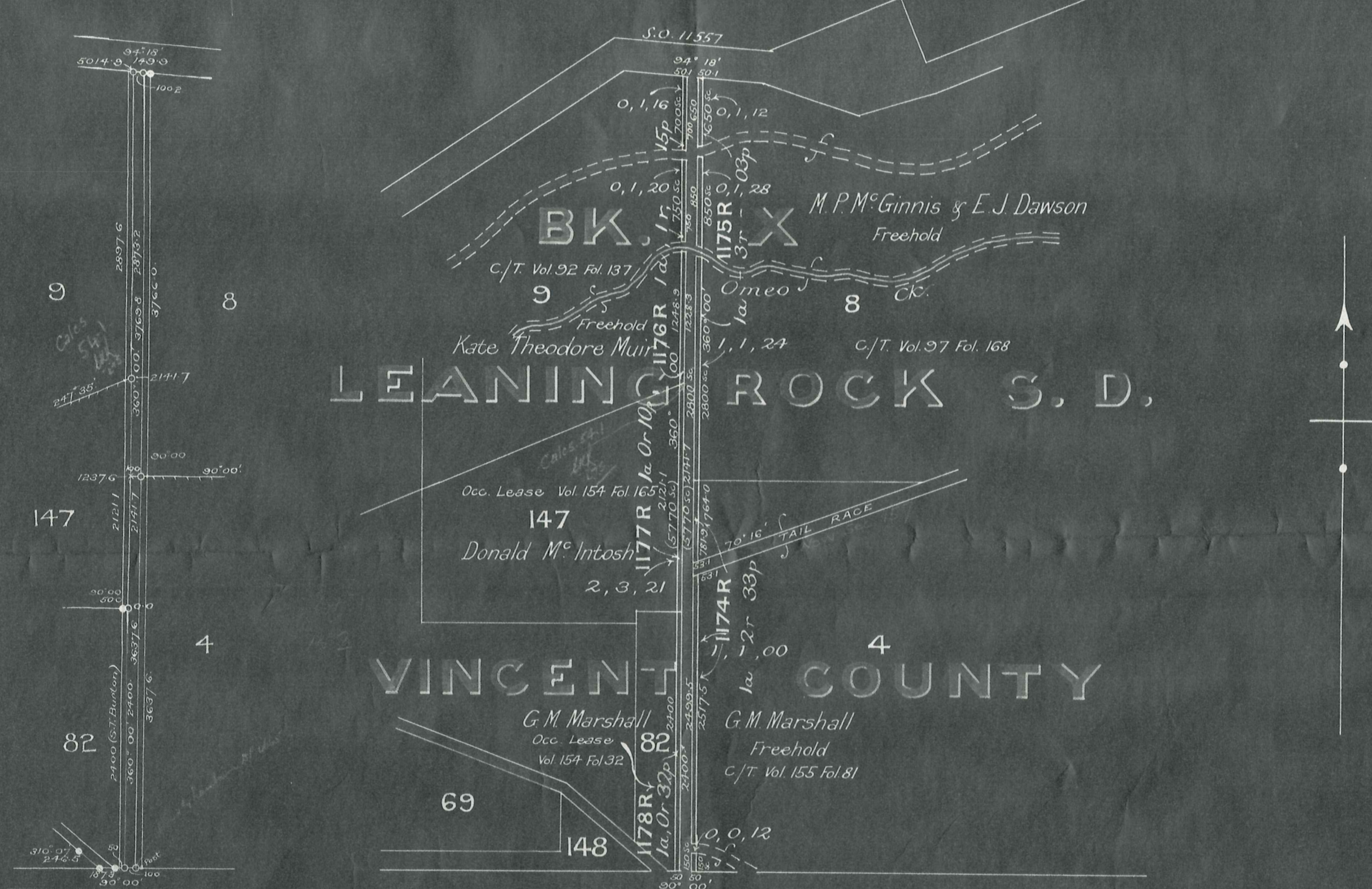


In pursuance of a resolution passed by the Vincent County Council on the 23rd day of June 1920 consenting to the closing of the road as indicated by a green colour hereon the Common Seal of the Vincent County Council was hereunto affixed this 22nd day of September 1920 in the presence of

J. M. Knight Chairman
J. B. ... Clerk



Plan of ground pegging
 W.D. Armit — Surveyor
 May 1921.
 F.B. 213 p. 6.
W.D. Armit
Surveyor
27th July 1921.
Leaning Rock S.D.
29-7-1921

Declared Govt. Road Gaz. 1920 p. 3048
 Declared Closed Gaz. 1920 p. 3144
 " Crown Land " 1921 p. 9

Plan of
 Parts of a road to be closed
 in Bk. X Leaning Rock S.D.

Scale, 10 chains to an inch

7-9-1920
Robert ...

File 341, Ref. Plans S.P. 262, 284, 348, 350, Bk. X
 Recorded S.A.P. *...* Index No. 2620 File 1X/80

10447

L.26