

- Existing Kerb and Channel
- Proposed Kerb and Channel
- Existing Sealed Footpath
- Existing Metal Footpath
- Proposed Footpath (Complete)

— SPOT LEVEL PLAN.

Scale: 2ch. to an inch.

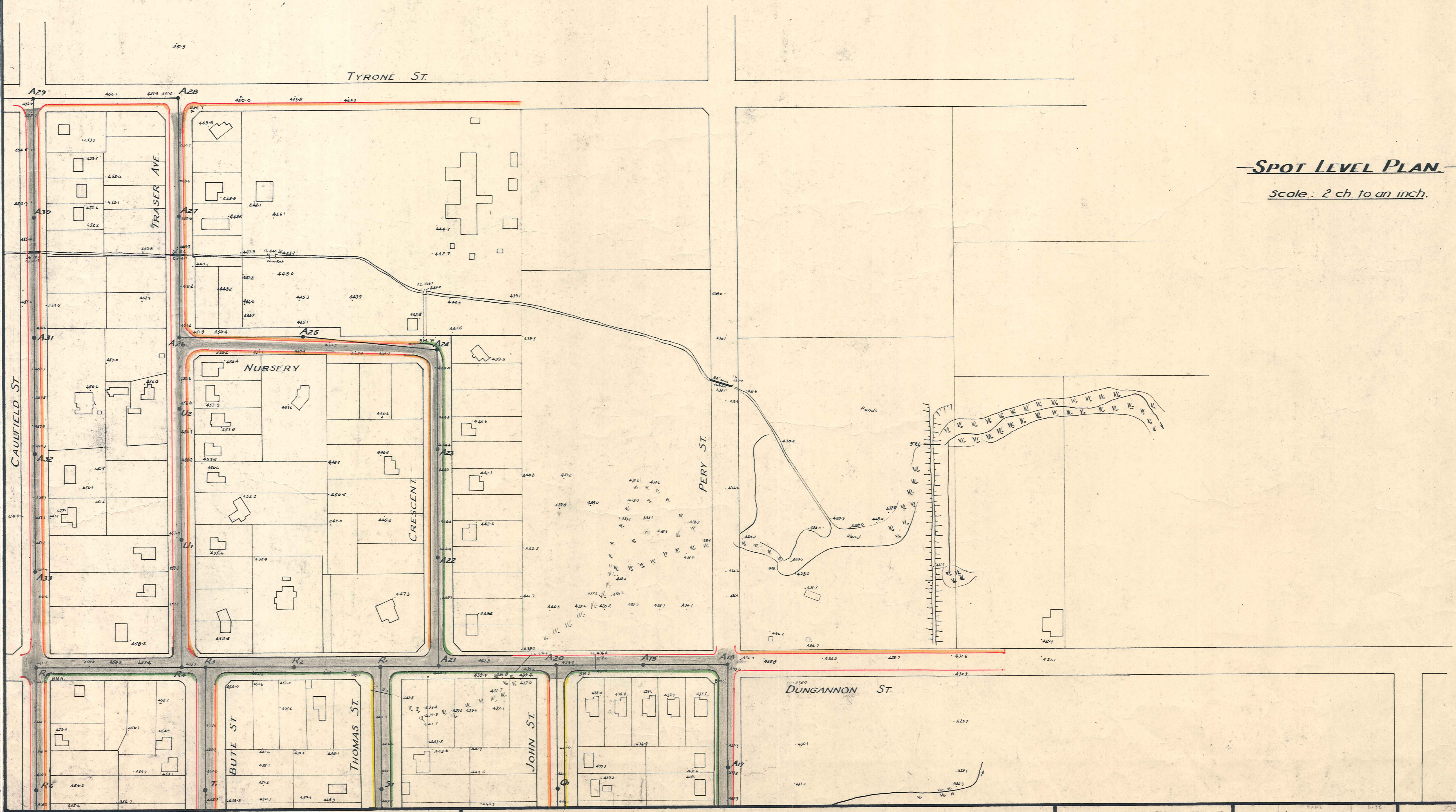
A0 - A12 3" dia. R.C. elsewhere 6" dia. R.C.

MANIOTOTO COUNTY COUNCIL

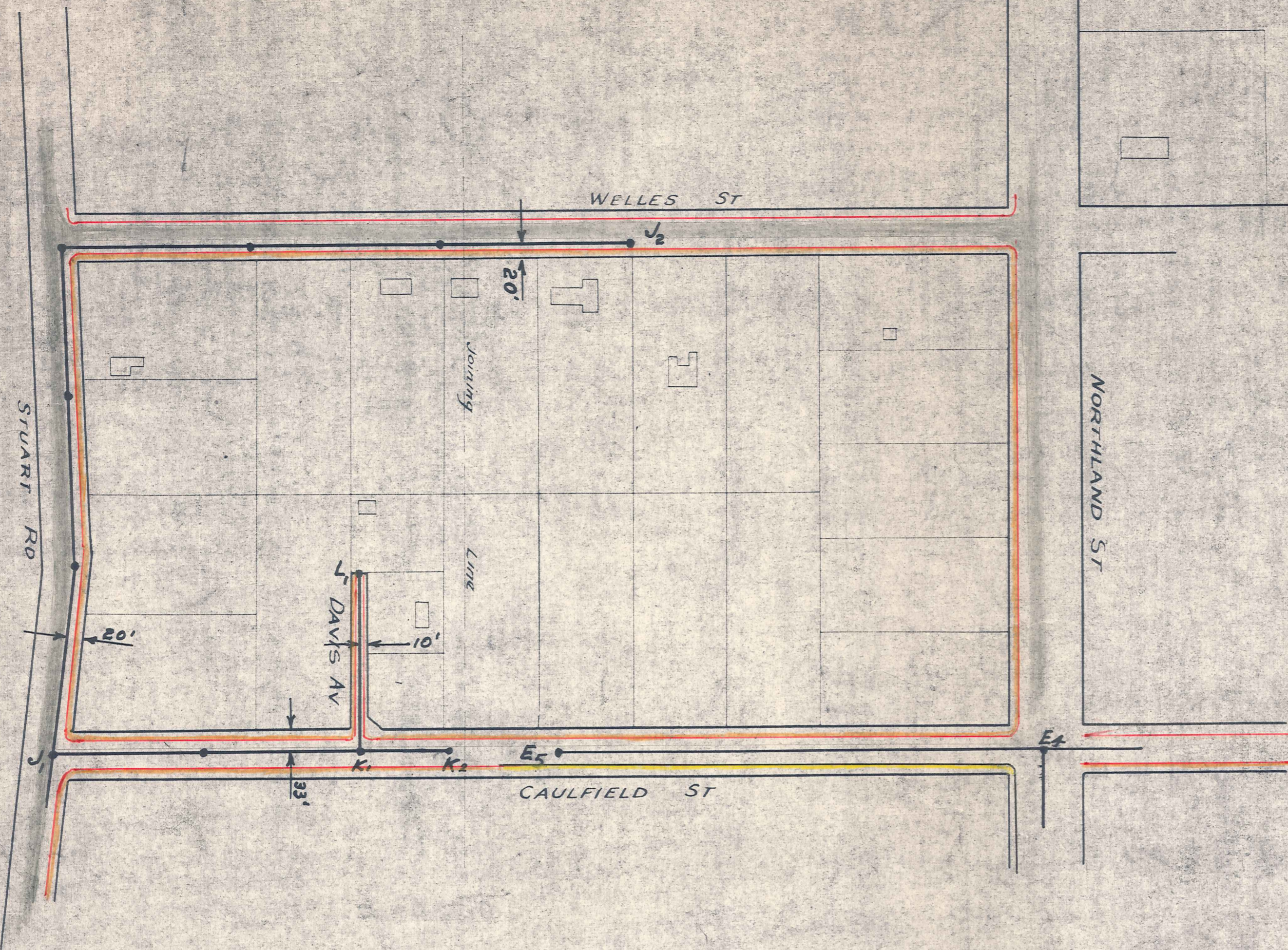
RANFURLY SEWERAGE SCHEME

GUFFILL, WATTS & KING
 CIVIL ENGINEERS AND SURVEYORS
 DUNEDIN and INVERCARGILL

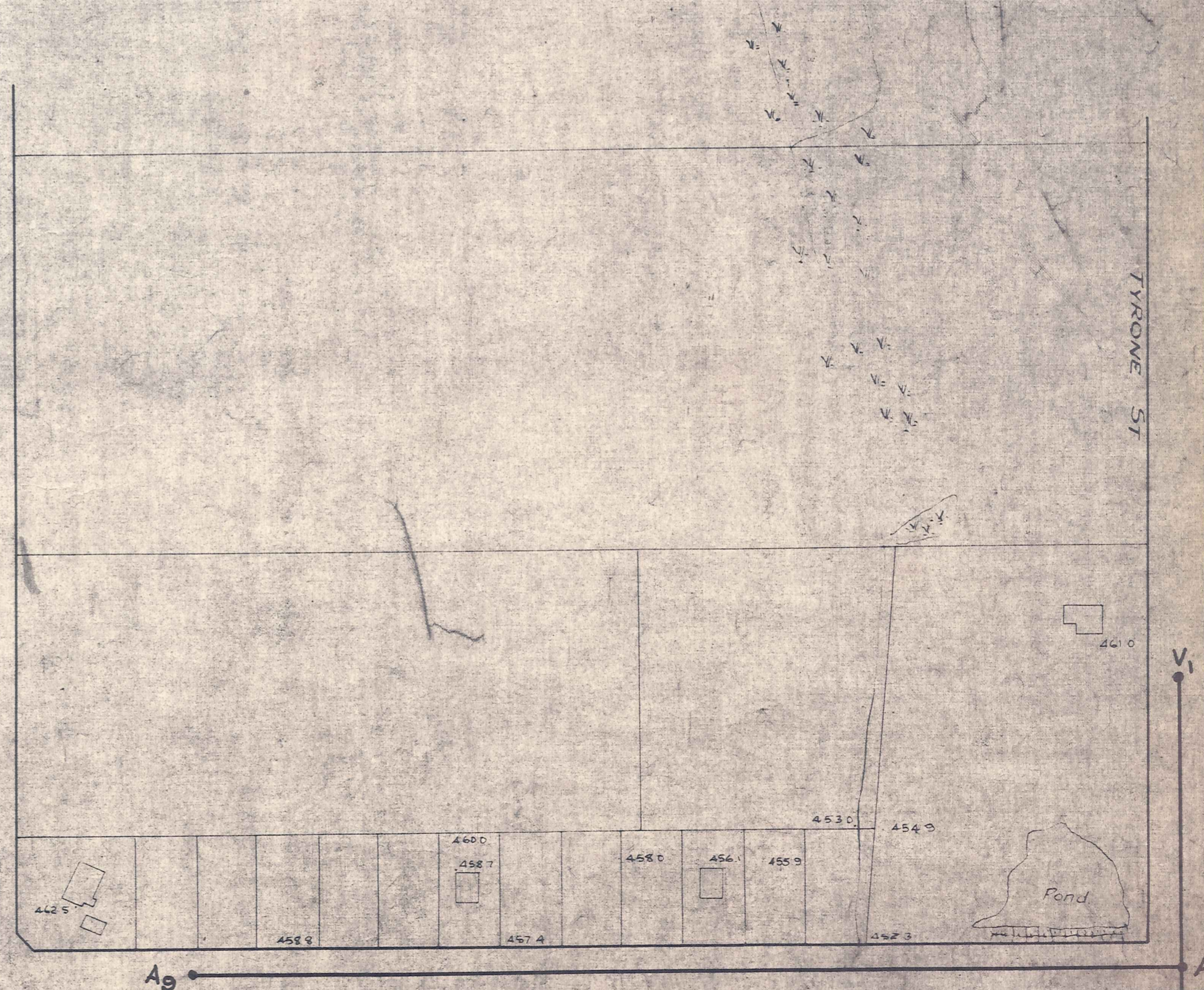
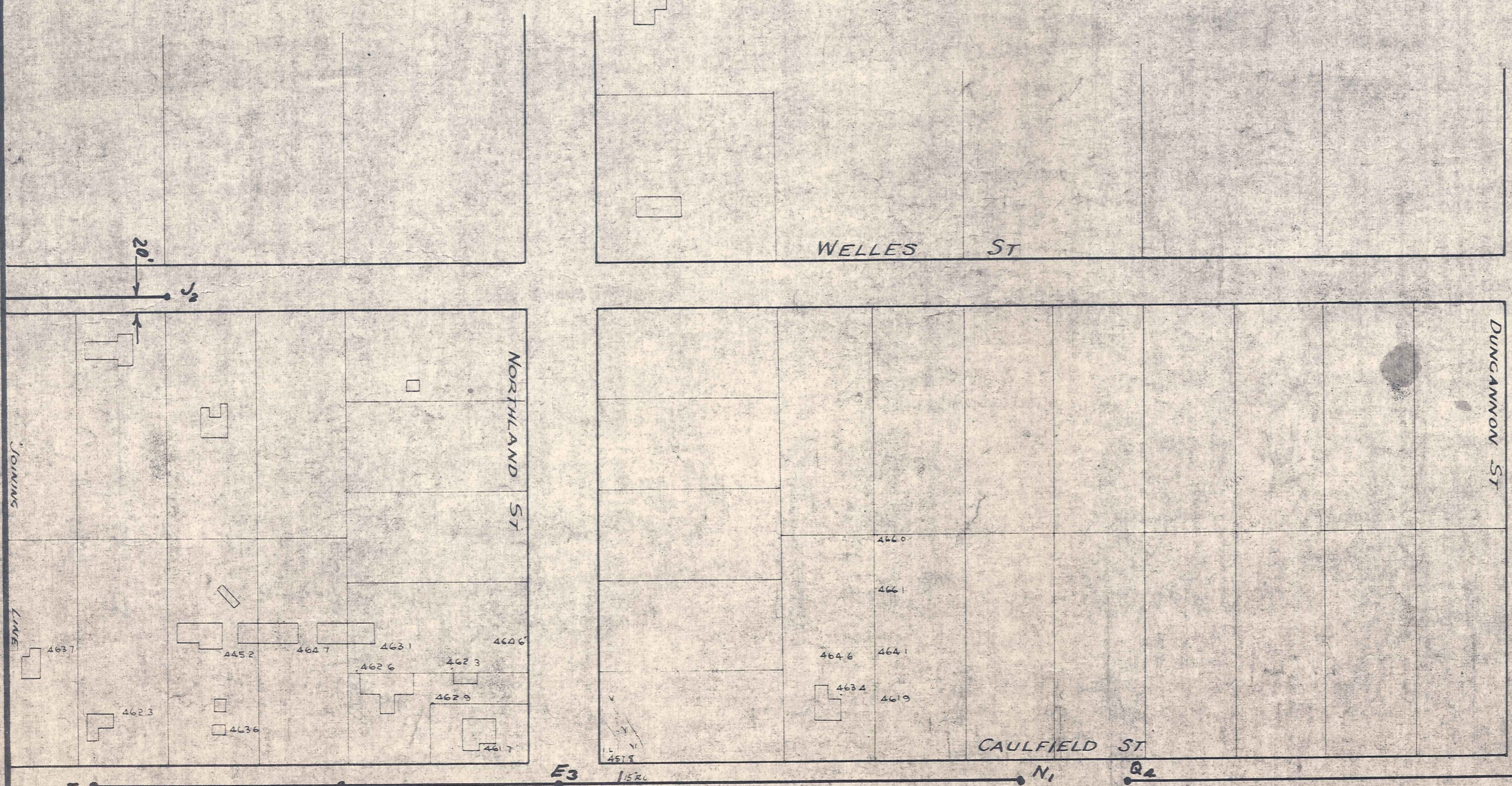
| | | | |
|-------------|--------------|------------|-----------------|
| APPROVED BY | A.B. Cochran | DATE | Sept 1958 |
| CHECKED BY | A.B.C. | DATE | Nov 1958 |
| FILE NO. | 2895/2a | F.B.K. 151 | FILE NO. 5/6/32 |



SPOT LEVEL PLAN
Scale: 2 ch. to an inch.



Scale 2ch. to an inch.



MANIOTOTO COUNTY COUNCIL

RANFURLY SEWERAGE SCHEME
LAY-OUT PLAN

DUFFILL, WATTS & KING
CIVIL ENGINEERS AND SURVEYORS
DUNEDIN and INVERCARGILL

| | | | |
|---------------|--------|------------|------------|
| DESIGNED BY | A.B.C. | DATE | Sept 58 |
| DRAWN BY | A.B.C. | CHECKED BY | W. Duffill |
| CALCULATED BY | | DATE | Nov 1958 |
| TRACED BY | G.H.F. | DATE | April 60 |

JOB NO.
2895/14
FILE NO.