

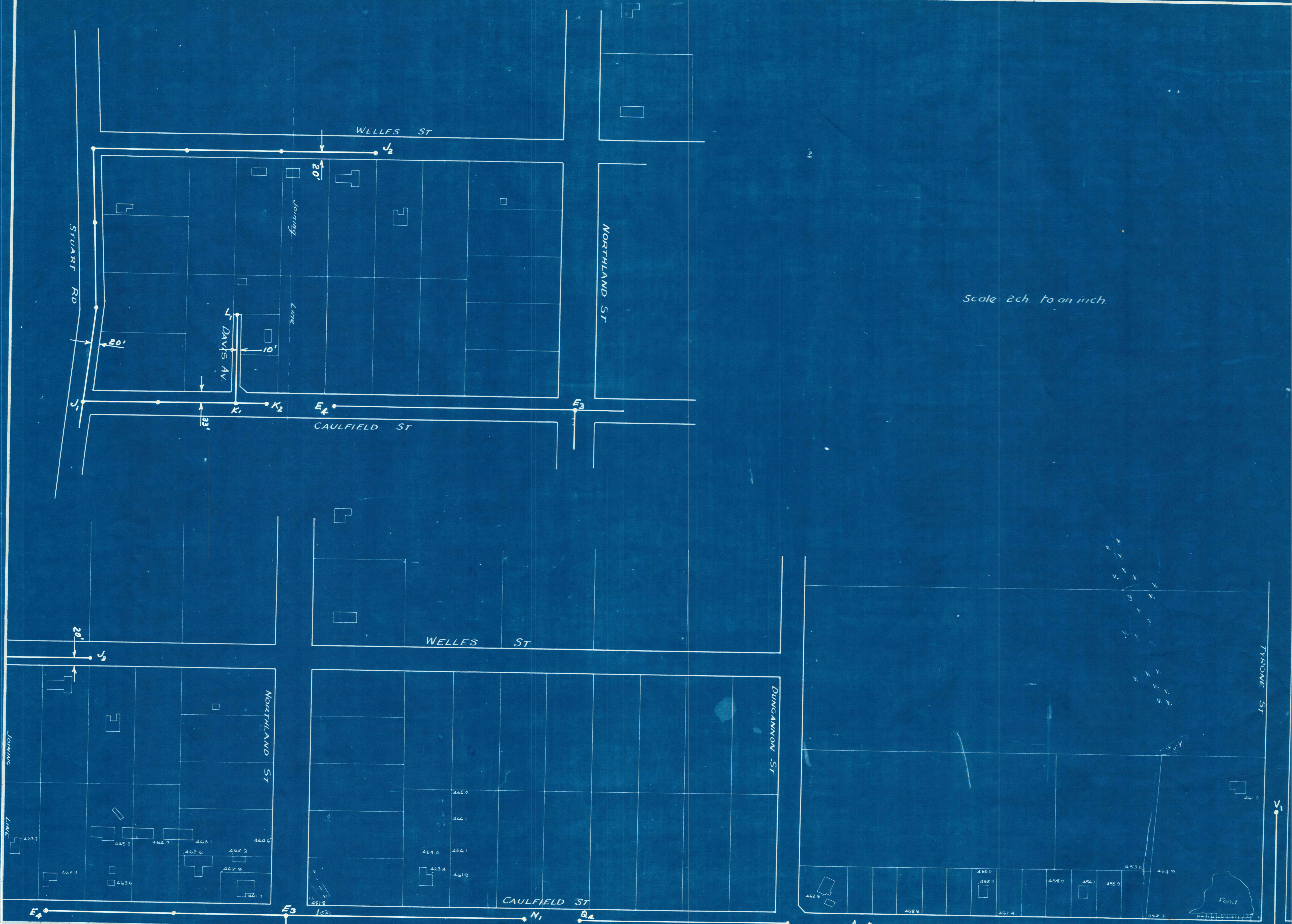
MANIOTOTO COUNTY COUNCIL

RANFURLY SEWERAGE SCHEME  
LAYOUT PLAN

DUFFILL, WATTS & KING  
CIVIL ENGINEERS AND SURVEYORS  
DUNEDIN and INVERCARGILL

APPROVED BY:	A. B. C.	DATE:	Sep. 59	JOB NO.:	2895/12
DRAWN BY:	G. H. F.	DATE:	May 19 59	FILE NO.:	
CHECKED BY:		DATE:	April 59		
TRACED BY:					





MANIOTOTO COUNTY COUNCIL

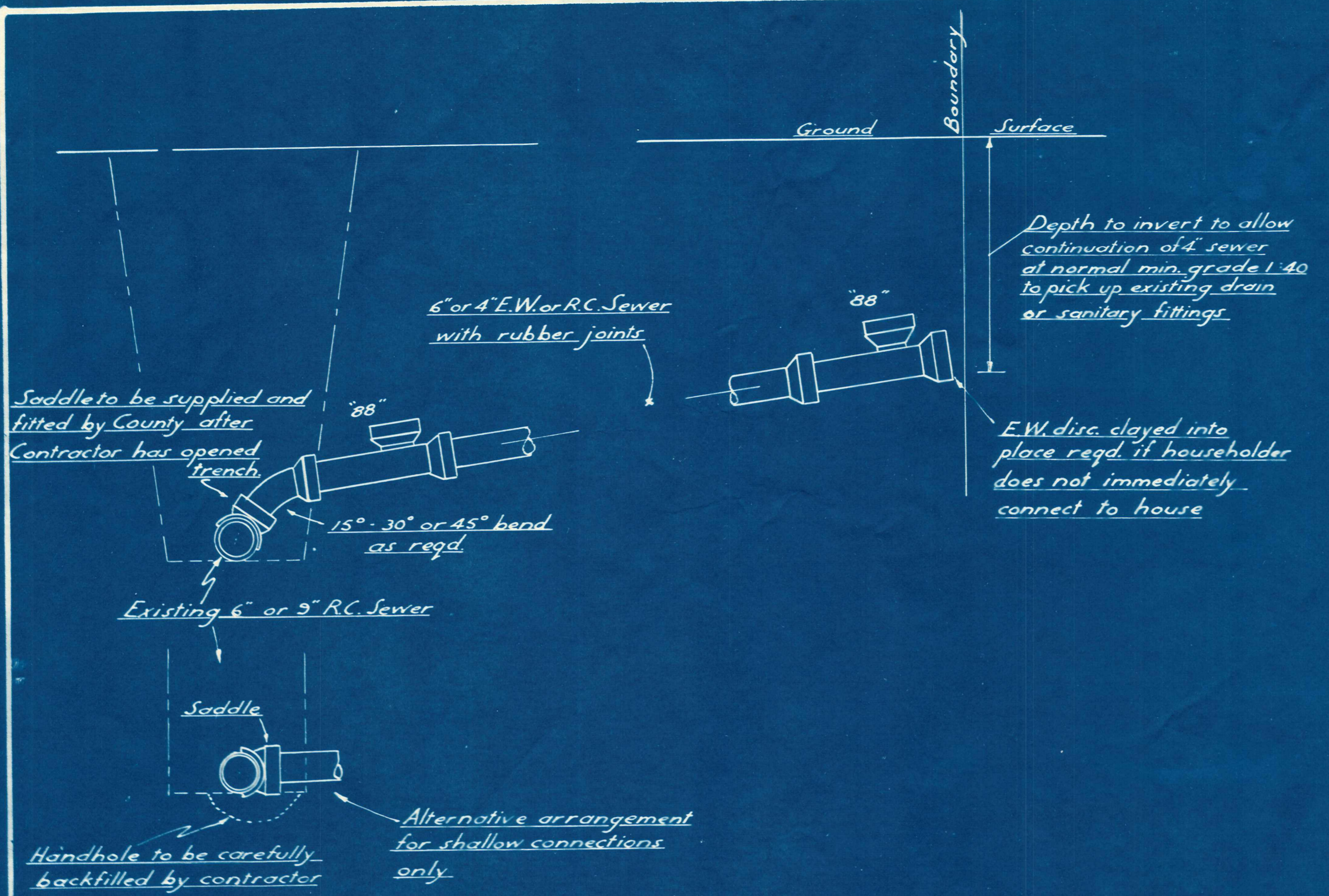
RANFURLY SEWERAGE SCHEME  
LAYOUT PLAN

DUFFILL, WATTS & KING  
CIVIL ENGINEERS AND SURVEYORS  
DUNEDIN and INVERCARGILL

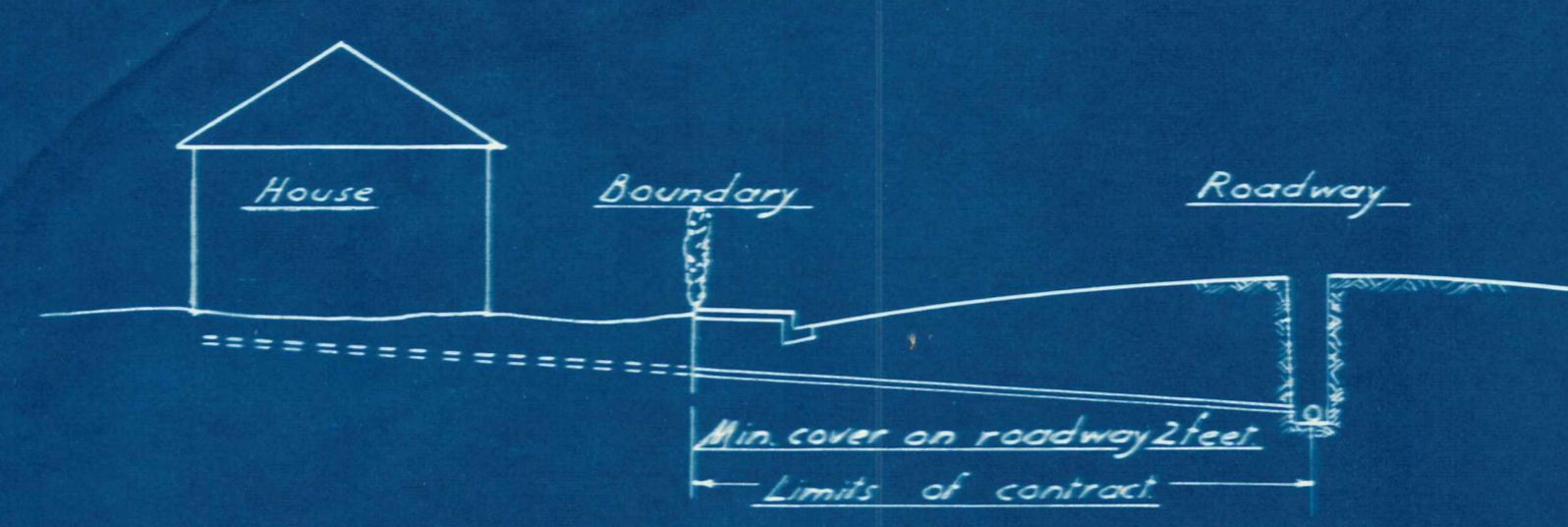
DESIGNED BY	A.B.C.	DATE	Sept. 58
DRAWN BY	A.B.C.		
CHECKED BY	G.H.F.	DATE	May 1960
TRACED			April 60

2895/14

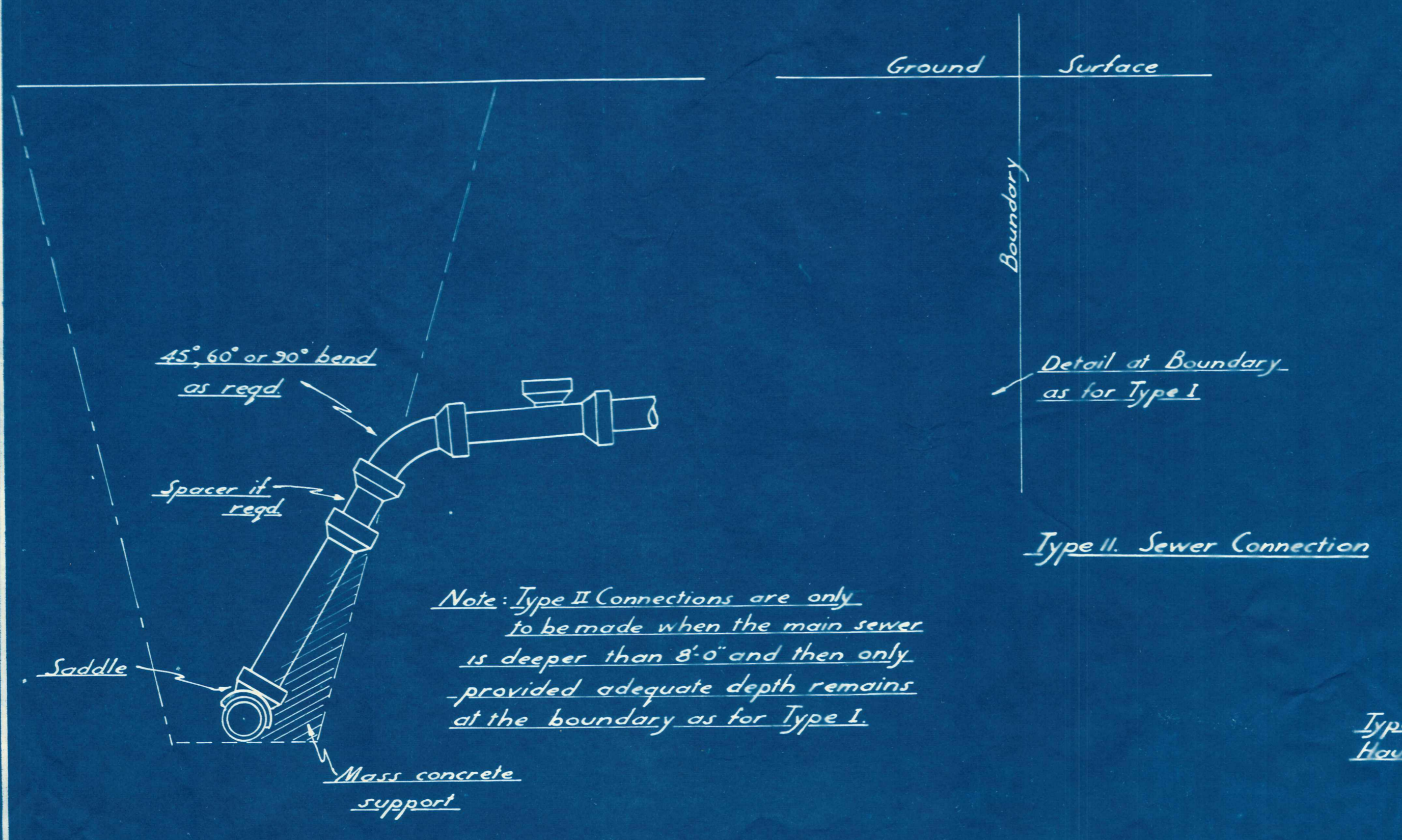
FILE NO.



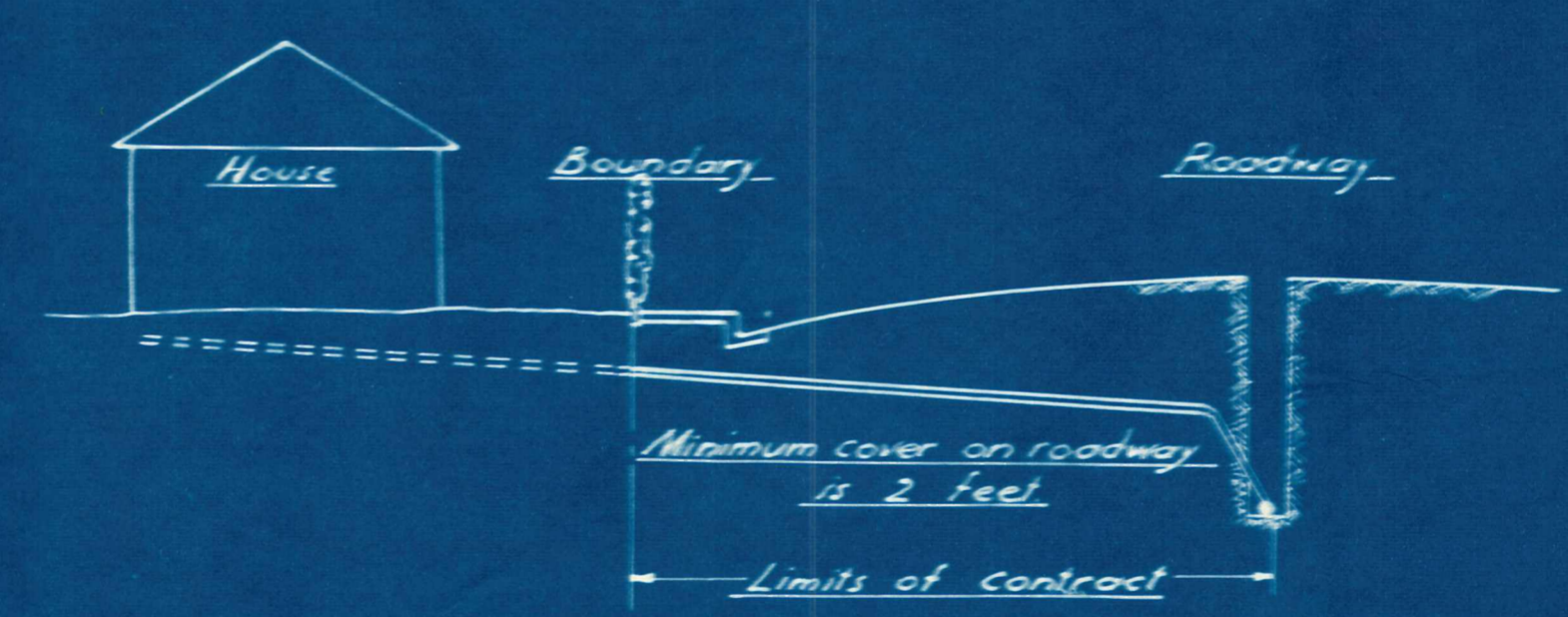
Type I. Sewer Connections



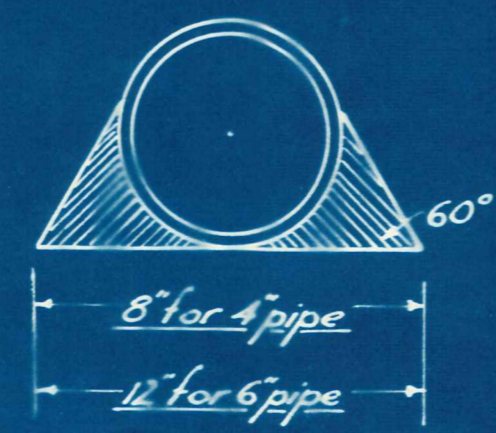
In both cases shown minimum cover in private property is to be 9". The connection at the boundary is to be deep enough to ensure that minimum cover at the house itself is possible with a grade of 1 in 40. For further information see NZ SS 671 - "NZ Std. Code of Sanitary Plumbing and Drainage By-Laws."



Type II. Sewer Connection



Type A Haunching



Type B Haunching

