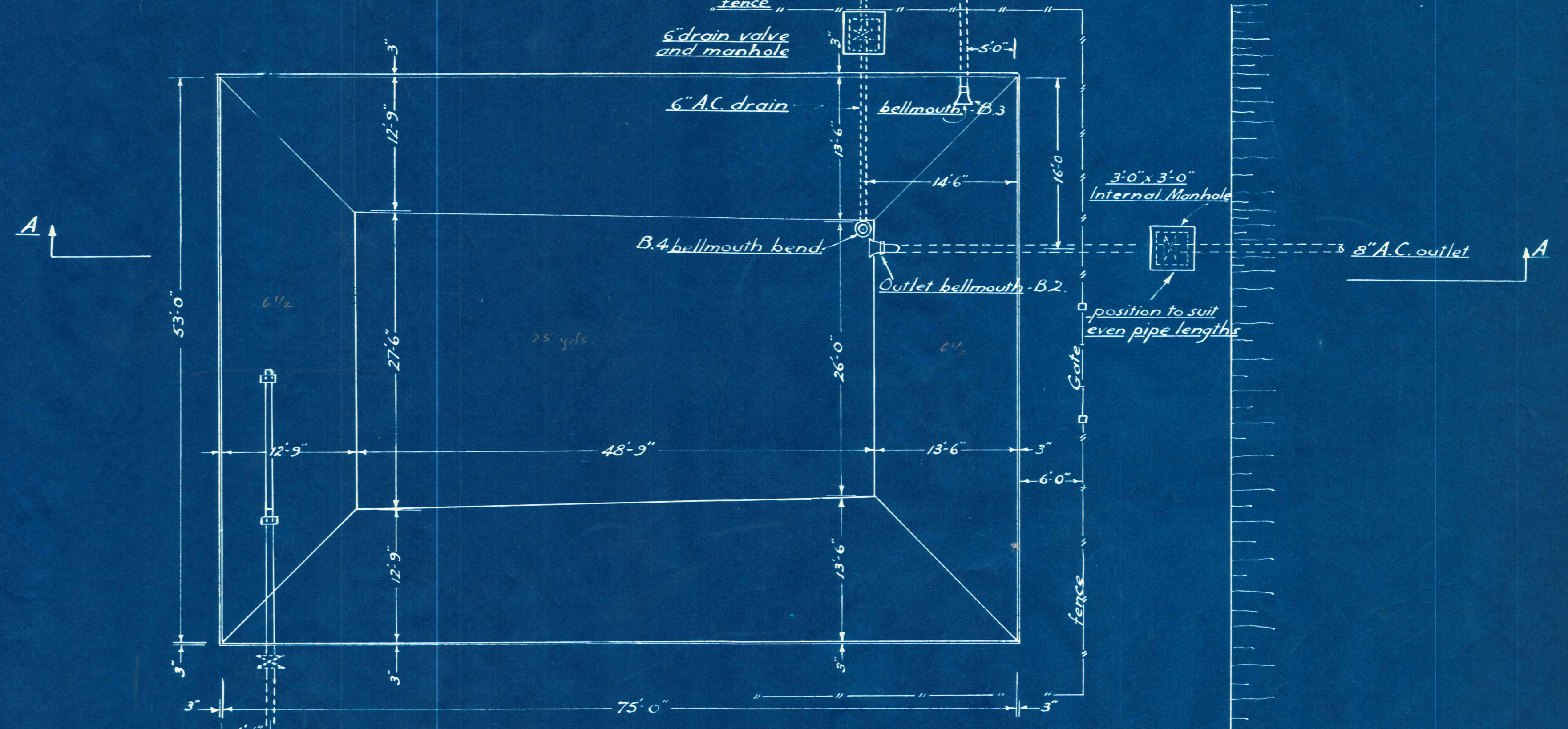
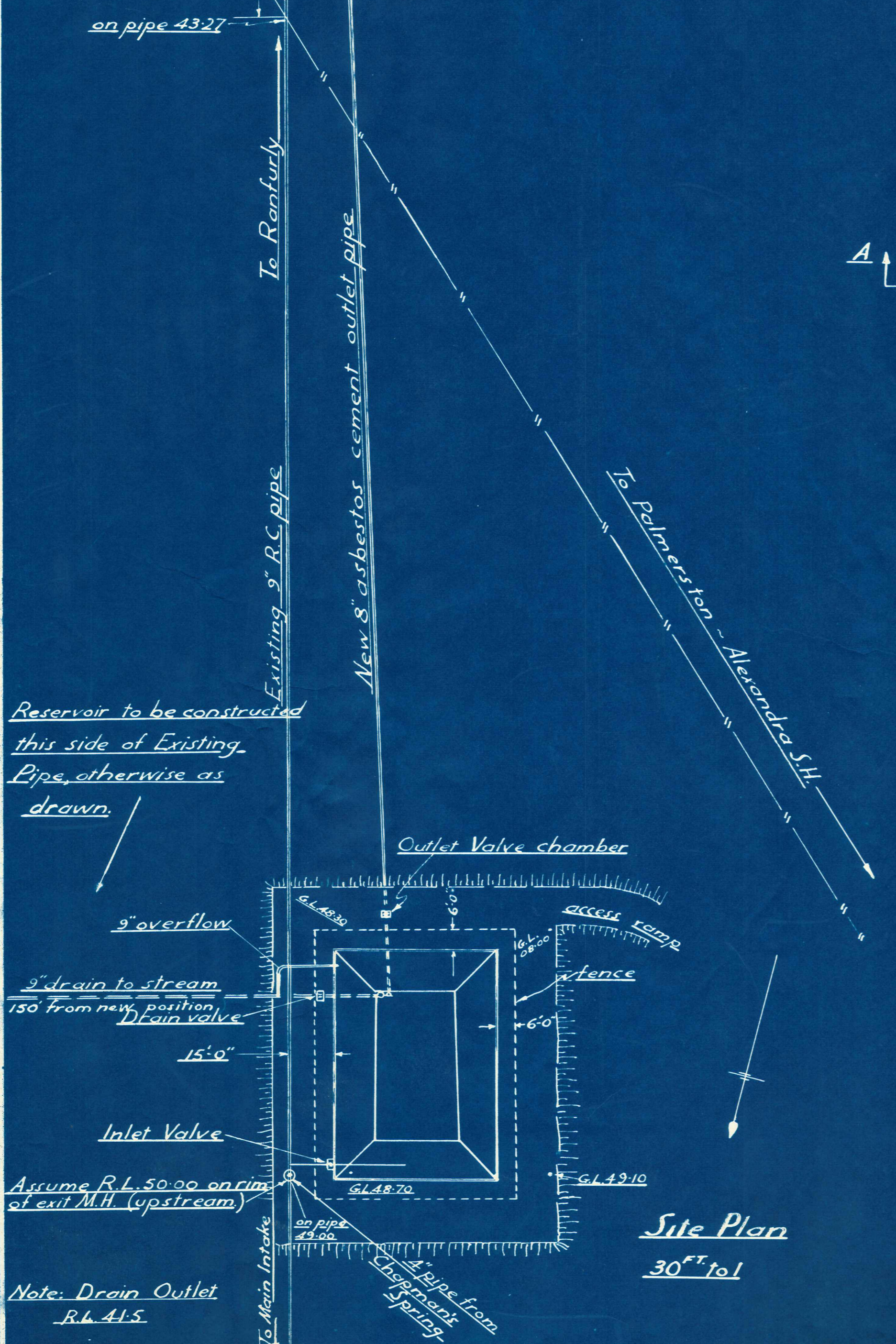


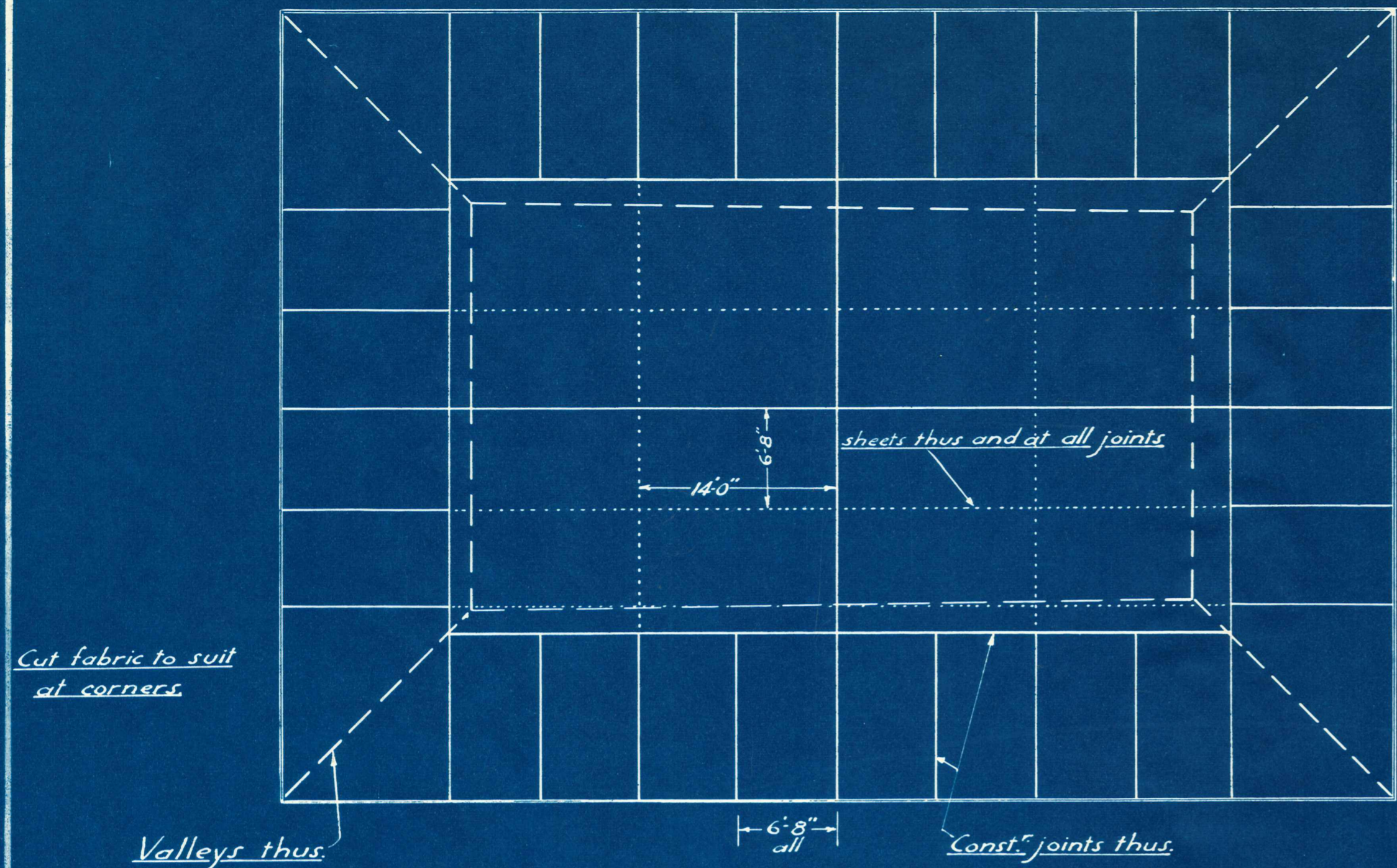
**Section A-A**



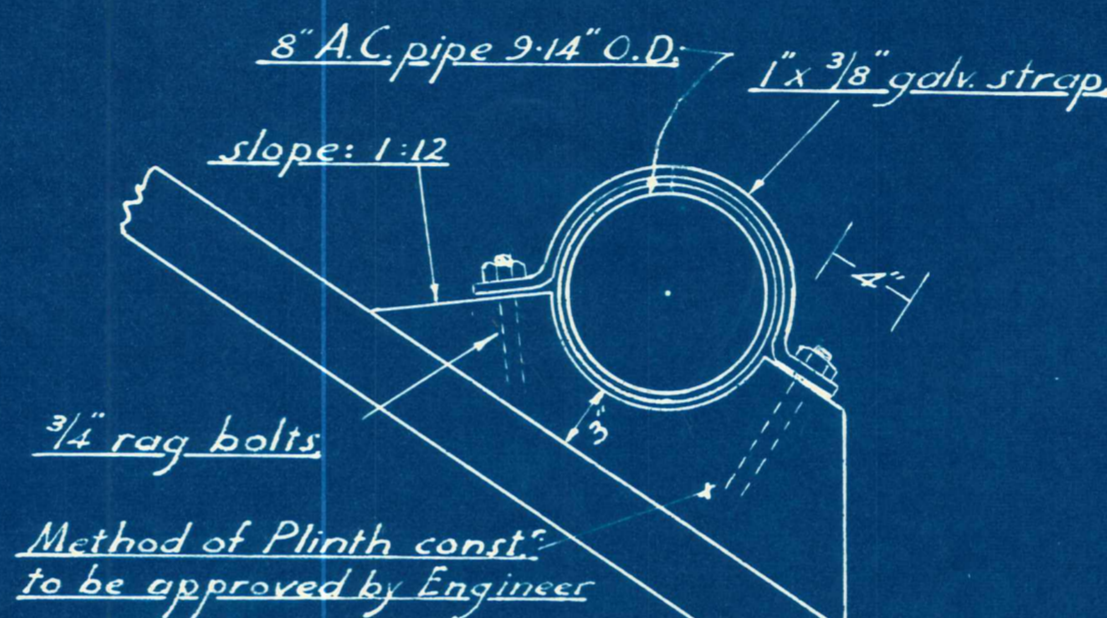
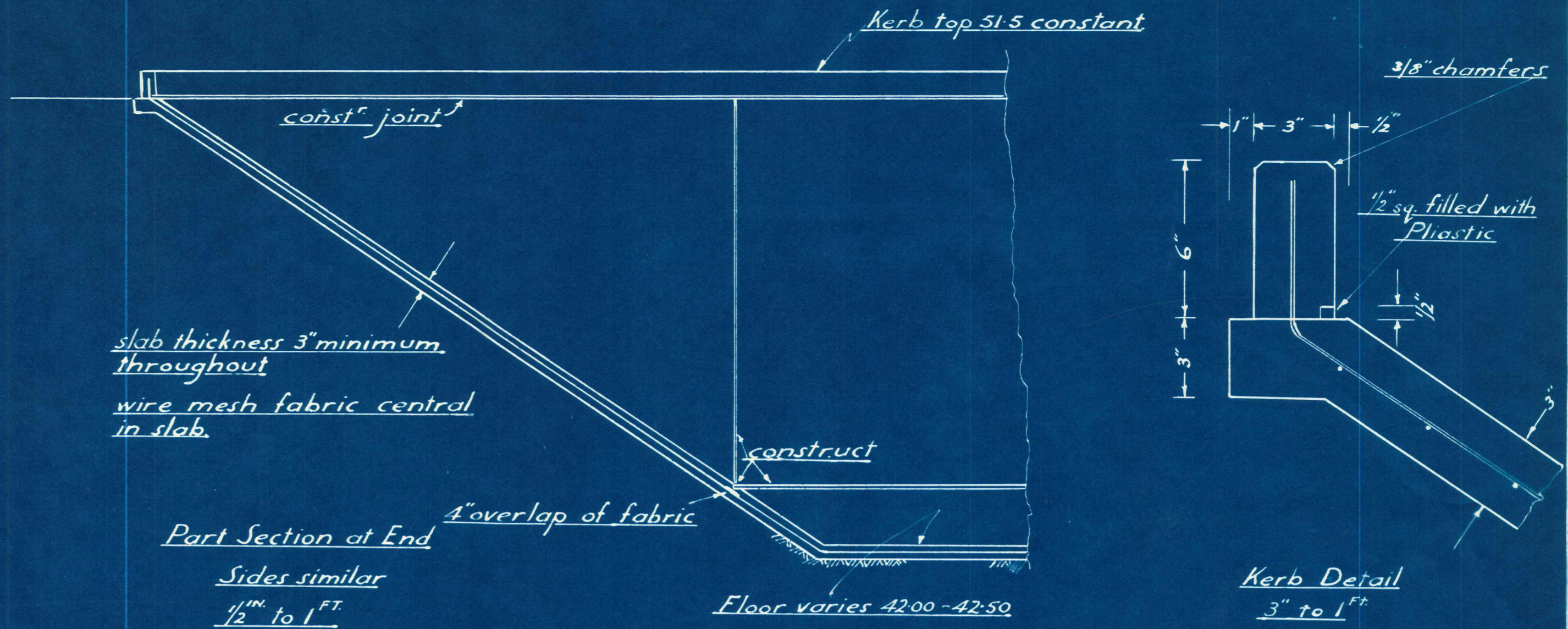
**Plan**  
1/8" = 1 FT.



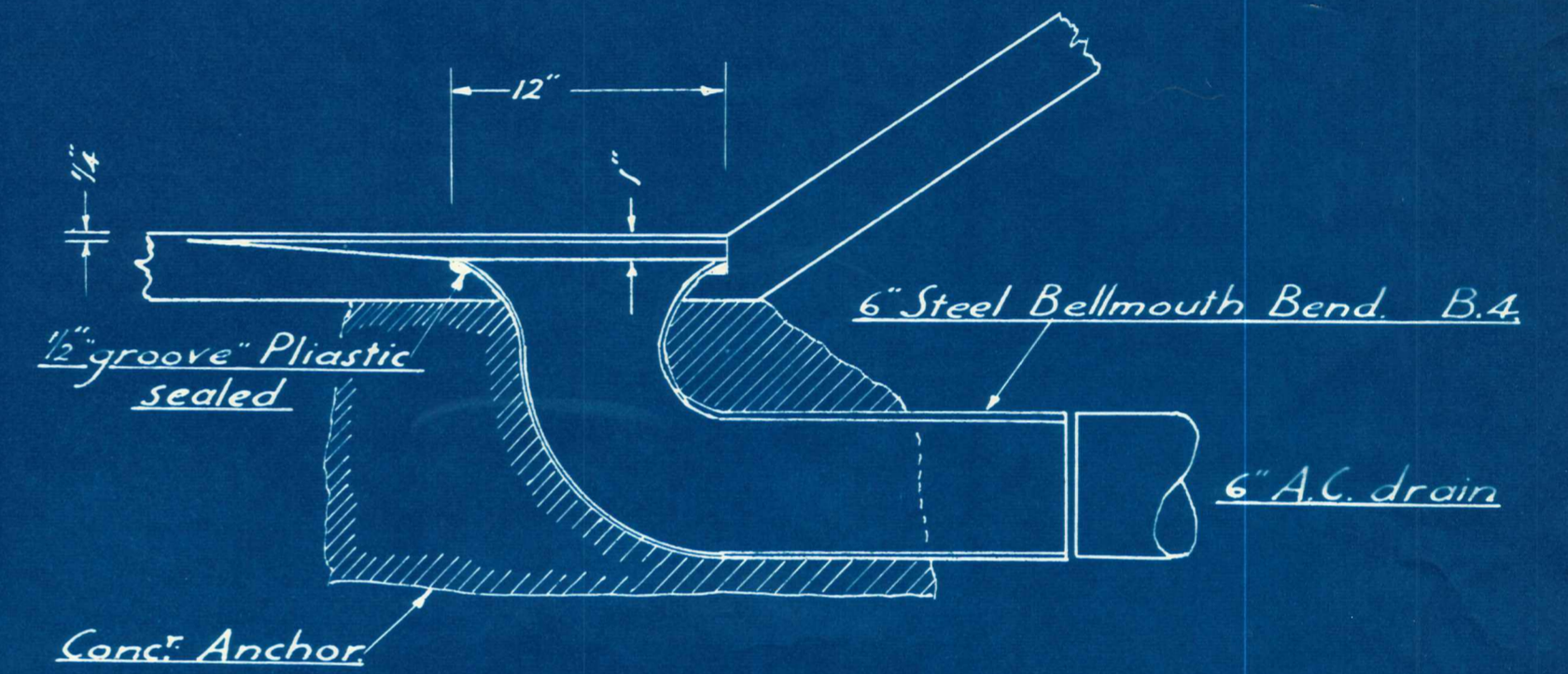
**Site Plan**  
30 FT. = 1"



Plan of Construction Joints and Disposition of Fabric Reinforcing Sheets for 14x4 x 7-0 sheet of 4x4 x N°8 gu. reinforcing mesh  
Spacing allows for all sheets to overlap 4"

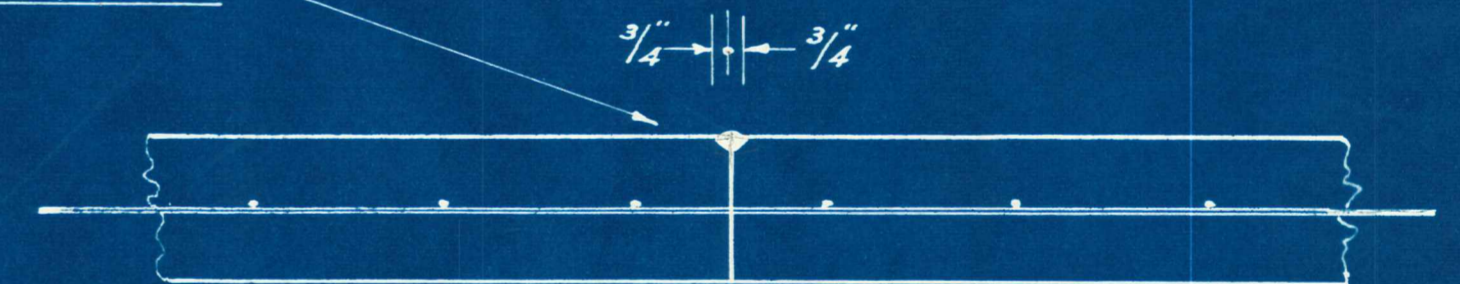


Detail of Inlet Pipe Plinths  
1/2" to 1" (2 reqd.)



Detail of Drain Outlet  
1/2" to 1"

Groove formed by two 3/4 x 3/4 chamfers and filled with Plastic



Typical Construction Joint  
3" to 1"

Pipe Specials Schedule			
Mark.	No. of	Description	Diagram
T1	2	8" p.e. on 9" p.e. tee 8" O.D. = 9-14"	
B1	1	8" p.e. 90° bend 8" O.D. = 9-14"	
B2	1	14" bellmouth-8" p.e. 8" O.D. = 9-14"	
B3	1	15" bellmouth-9" sockets 9" socket I.D. =	
B4	1	12" bellmouth 90° bend 6" p.e. 6" O.D. = 6-98"	
V1	2	8" p.e. valves 8" O.D. = 9-14"	
V2	1	6" p.e. valve 6" O.D. = 6-98"	
J1	4	9" Gibault joints with long sleeves to suit pipe 11-5 O.D.	

Fencing Fence to be constructed with 6. No. 8 galv. plus one barbed wire. Concrete posts 3 per chn. with two droppers between conc. posts. Strainers at each corner and gate. Gate to be Tubular steel with Cyclone

Supplied by Council

1. Steel pipe specials & valves as per schedule
2. 6" & 8" asbestos cement Class B pipe & joints
3. 9" R.C. R.R. pipes (but not E.W bend on Junction pipe)