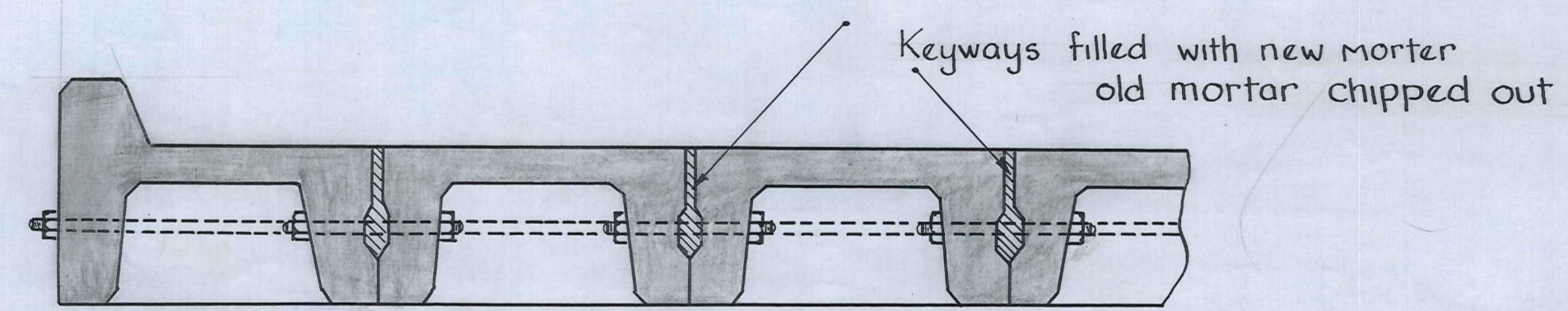


NOTES ON WATERWAY  
 Waterway Area is given by  
 Area A, B, C, D x cos 37°

Point Level to be 68.55  
 7/24"/16" octagonal piles  
 per pier

Point level to be 69.05  
 7/24"/16" octagonal piles  
 per pier

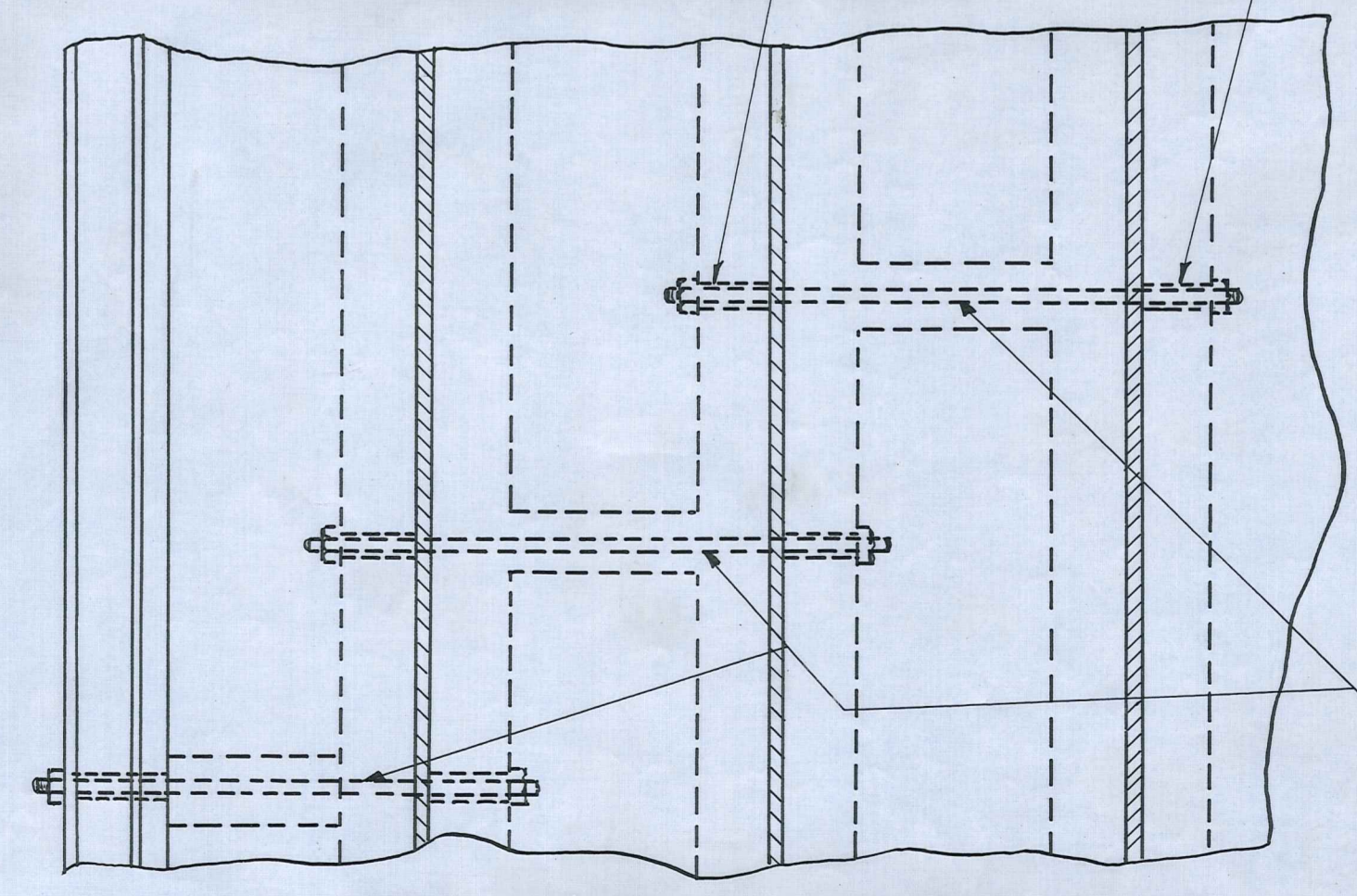
**ELEVATION PARALLEL TO ROAD**  
 (Filling not shown)  
 Scale 1/4" to 1'



**DETAIL OF MORTARED DECK KEYS**  
 Scale 1/2" to 1'

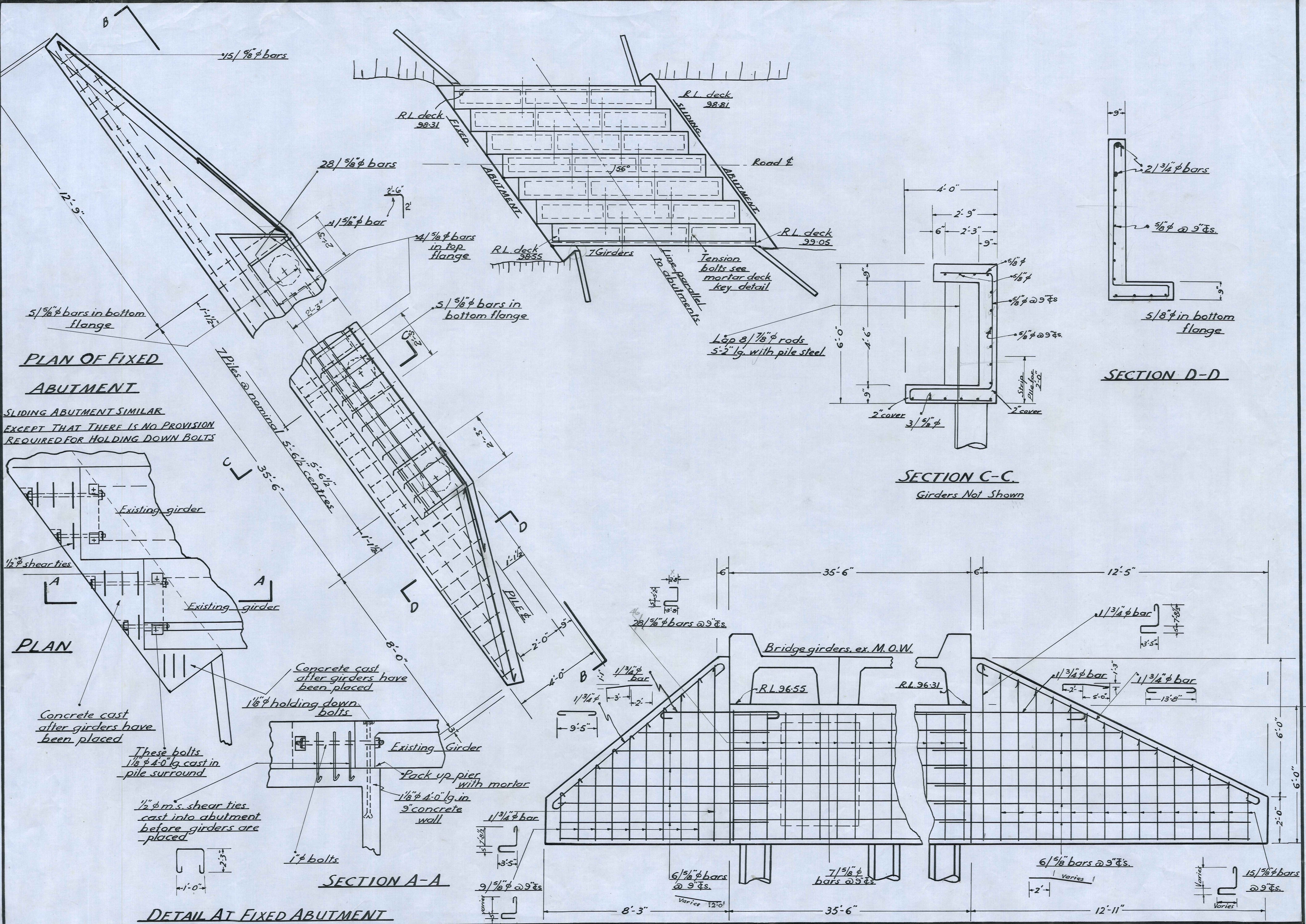
**NOTES ON MORTAR KEYS**

1. Before erection keyways will be coated with an approved lime wash
2. On erection tension bolts will be tightened up (a suitable 1/2" spacer will be required to keep the joint spread)
3. Mortar up joints and keep traffic off the bridge until mortar is up to full strength



**PLAN OF MORTARED DECK KEYS**  
 Scale 1/2" to 1'

1/2" diameter tension bolts - these will have to be placed in cored holes in each diaphragm before placing of girders



**PLAN OF FIXED ABUTMENT**

SLIDING ABUTMENT SIMILAR EXCEPT THAT THERE IS NO PROVISION REQUIRED FOR HOLDING DOWN BOLTS

**PLAN**

Concrete cast after girders have been placed  
 1/2" shear ties  
 Existing girder  
 Existing girder  
 These bolts 1/2"  $\phi$  4'-0" lg. cast in pile surround  
 1/2" p.m.s. shear ties cast into abutment before girders are placed

**DETAIL AT FIXED ABUTMENT**

**SECTION A-A**

**SECTION C-C**  
Girders Not Shown

**SECTION D-D**