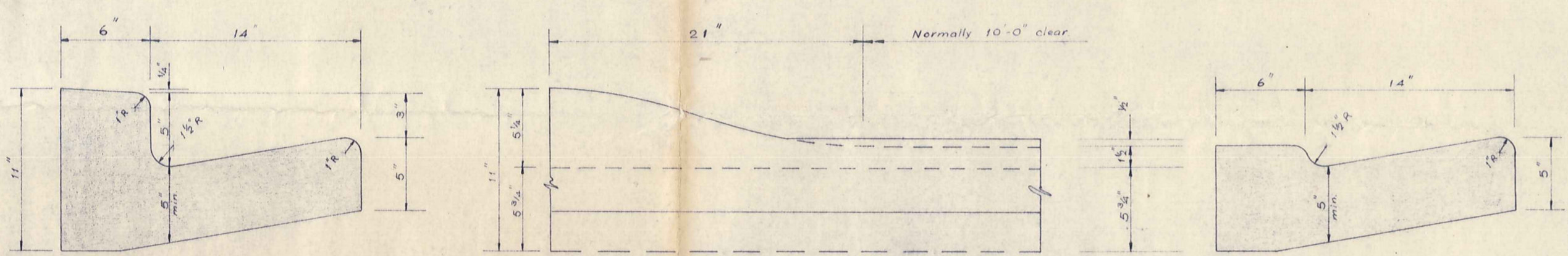


PLAN



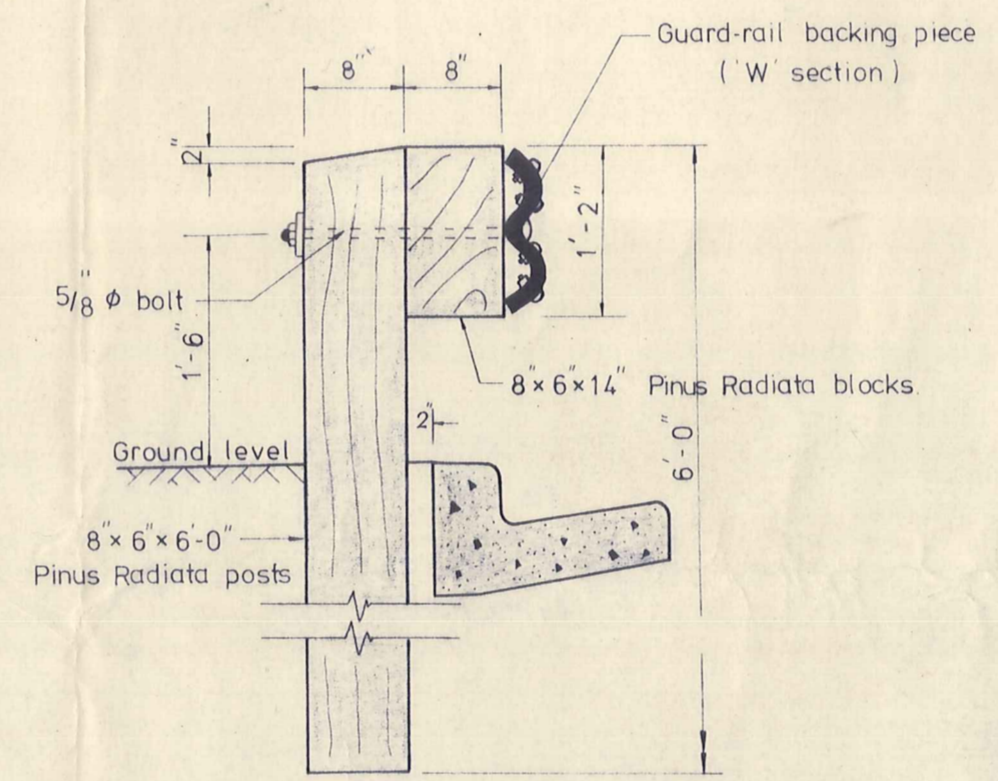
SECTION OF KERB & CHANNEL

FRONT SECTION OF VEHICLE CROSSING

SIDE SECTION

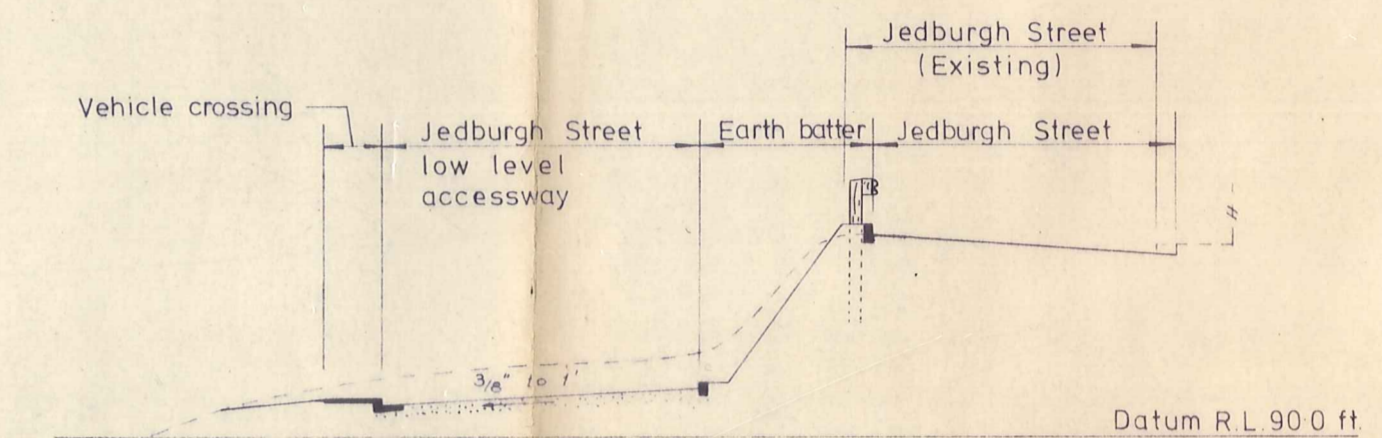
Scale: 1/8 Full size

Scale: 1/8 Full size

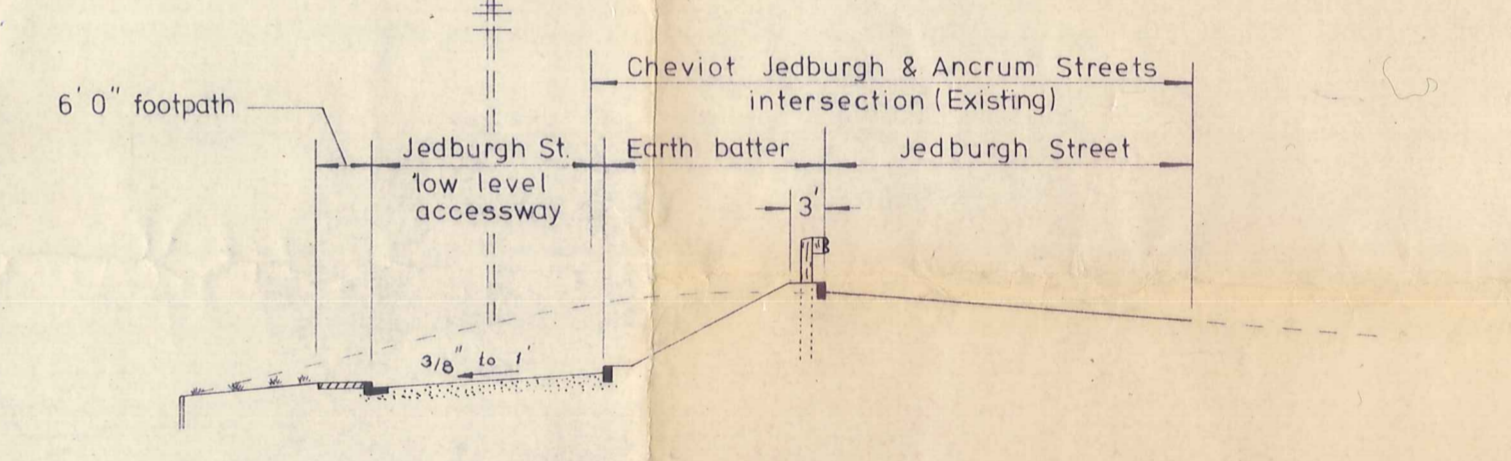


GUARDRAIL DETAILS

Scale: 3/4 in. to 1 ft.



SECTION D-D



SECTION C-C

DATUM 80.0 ft.

Station.	A.1	A.2	A.3	A.4	A.5	A.6	A.7	A.8	A.9
Top of kerb level.	100.29	100.61	101.10	101.59	101.42	99.60	97.13	94.66	92.19
Finished level.	100.4	100.72	101.21	101.6	101.6	99.71	97.24	94.77	92.3
Existing ground level.	100.4	100.7	101.1	101.3	101.3	100.4	100.3	98.1	92.8
Distance (feet).	00	20	50	80	87	110	140	170	200
Gradients	1 in 61.54			1 in 12.15					

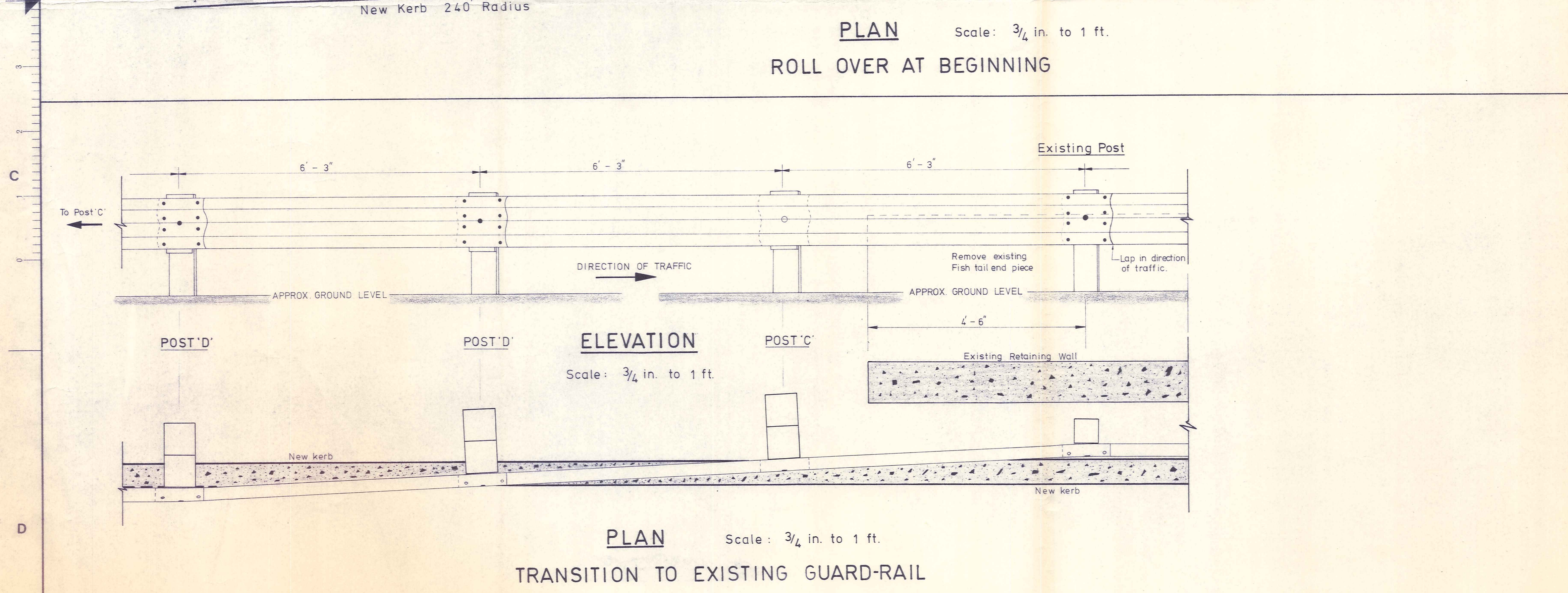
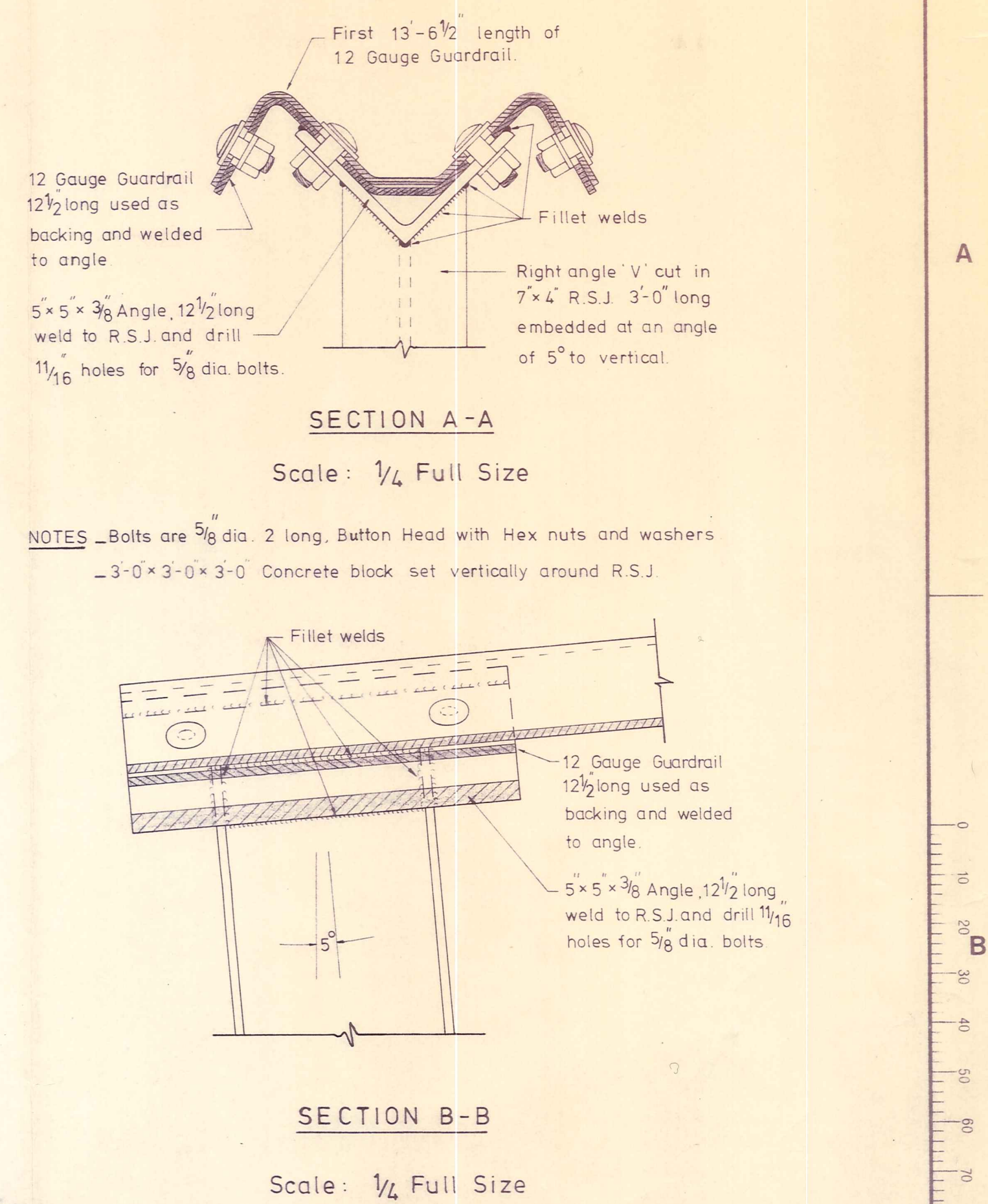
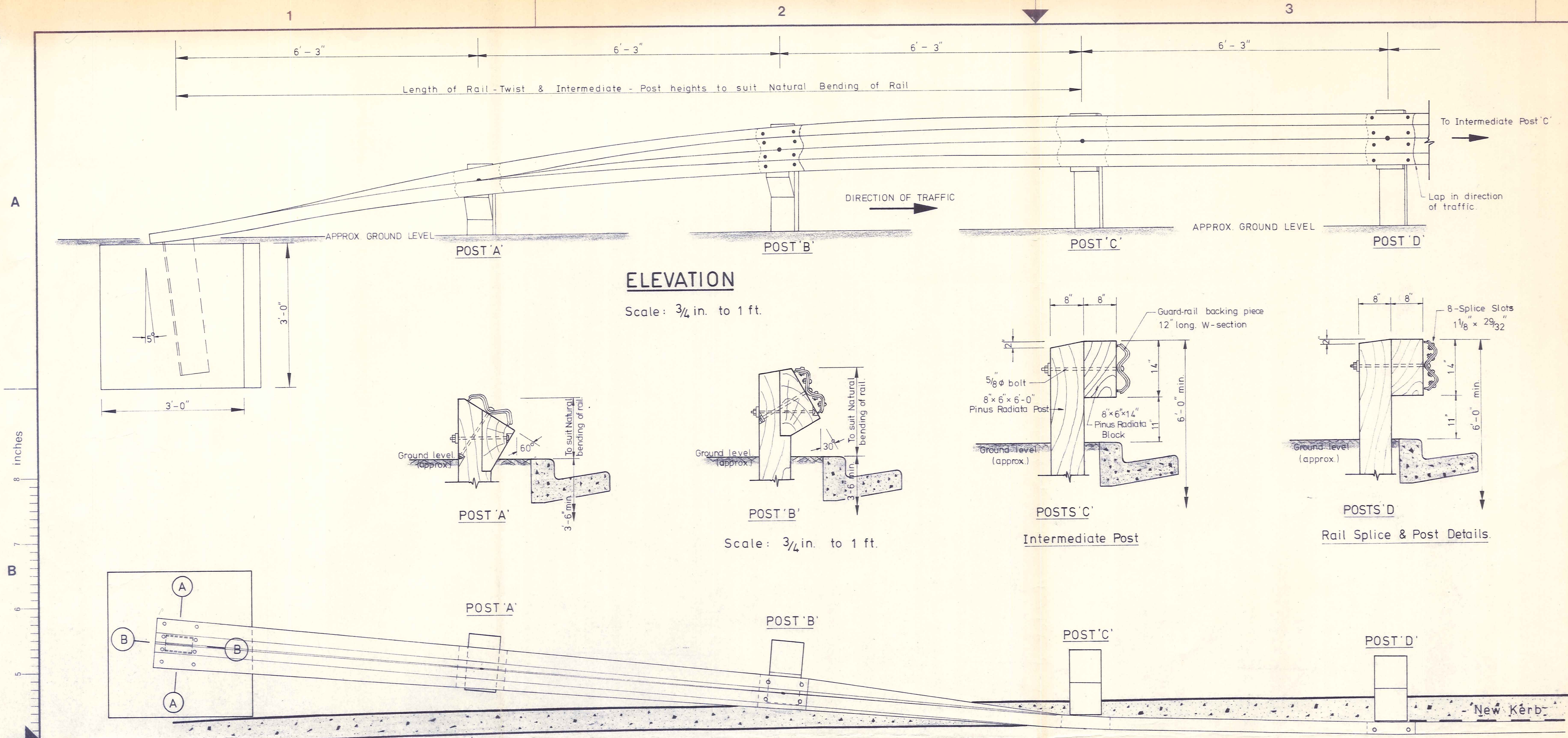
SECTION A-A

DATUM 80.0 ft.

Station.	B.1	B.2	B.3	A.5	A.6	A.7	A.8	A.9
Top of kerb level.	100.6	100.91	101.49	101.42	99.60	97.13	94.66	92.19
Finished level.	100.6	101.04	101.7	101.6	99.71	97.24	94.77	92.3
Existing ground level.	100.6	101.0	101.7	101.6	100.4	100.3	98.1	92.8
Distance (feet).	00	20	50	57	86	110	140	170
Gradients	1 in 45.45			1 in 12.15				

SECTION A-B

E. R. GARDEN & PARTNERS CONSULTING ENGINEERS DUNEDIN & INVERCARGILL	AMENDMENTS				RELEVANT DRAWINGS ETC.				ROXBURGH BOROUGH COUNCIL Designed H.T.C.N.P. Date Oct 1974 Scale: Horiz. 20 ft. to 1 in. Drawn N.P. Job No. 7028 Vert. 10 ft. to 1 in. Traced N.P. Checked Survey Ref: L.B. 136 Approved				RECONSTRUCTION OF JEDBURGH ST. (Low Level) & CHEVIOT ST. JUNCTION. No. of Sheets 2 Sheet No. 1 DRG No. 7028/1 Amendment			
--	------------	--	--	--	------------------------	--	--	--	---	--	--	--	--	--	--	--



E. R. GARDEN & PARTNERS
CONSULTING ENGINEERS
DUNEDIN & INVERCARGILL

AMENDMENTS		RELEVANT DRAWINGS ETC.	

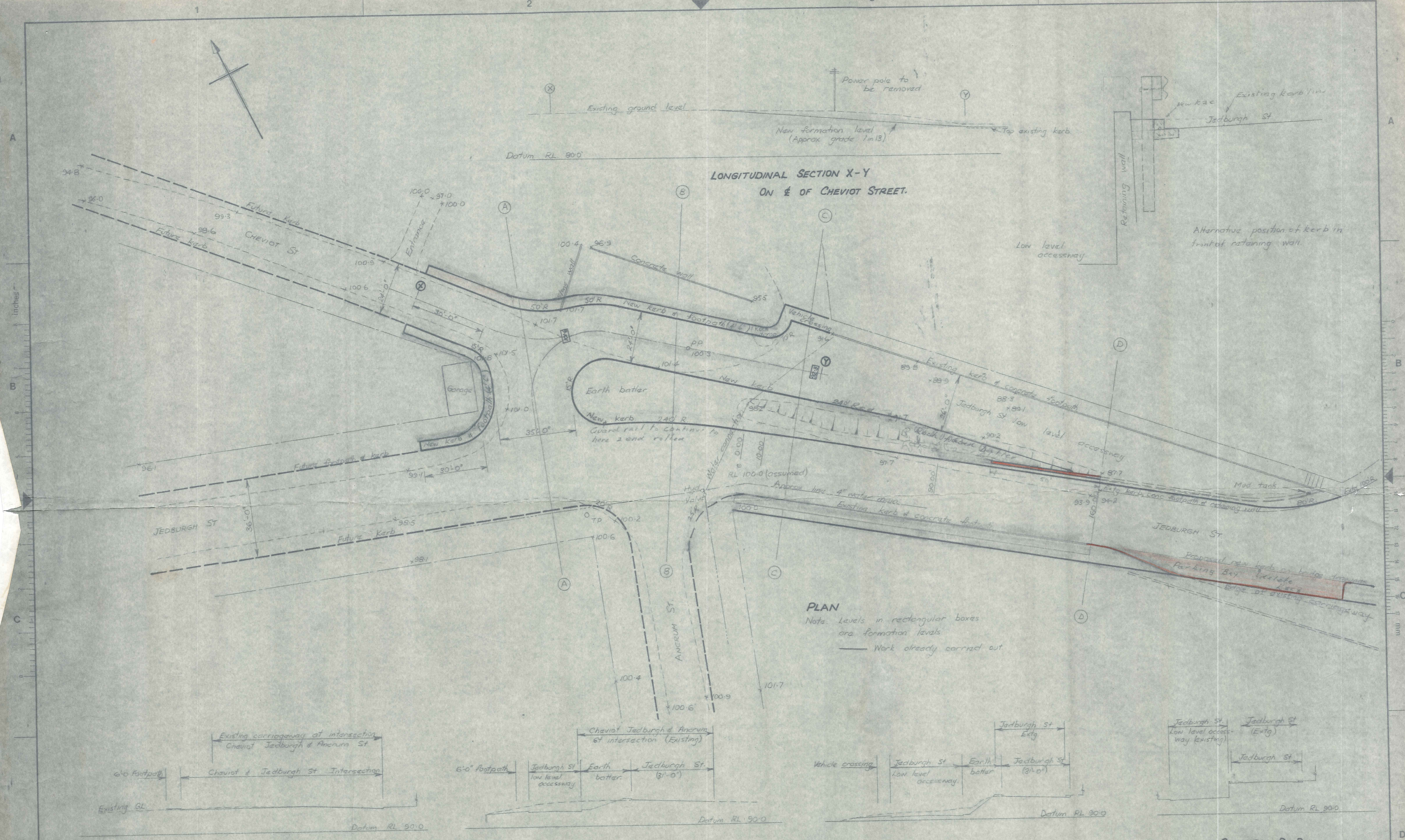
ROXBURGH BOROUGH COUNCIL

Designed	N. P.	Date	Nov. 1974	Scale:	As shown
Drawn	N. P.	Job No.	7028	Survey Ref:	
Traced	N. P.	Checked			
Approved					

RECONSTRUCTION OF JEDBURGH ST (low level) & CHEVIOT ST JUNCTION

GUARD-RAIL DETAILS

No. of Sheets	2	Sheet No.	2	DRG No.	7028/2
Amendment					



**LONGITUDINAL SECTION X-Y
ON E OF CHEVIOT STREET.**

PLAN
 Note: Levels in rectangular boxes are formation levels
 — Work already carried out

SECTION A-A

SECTION B-B

SECTION C-C

SECTION D-D

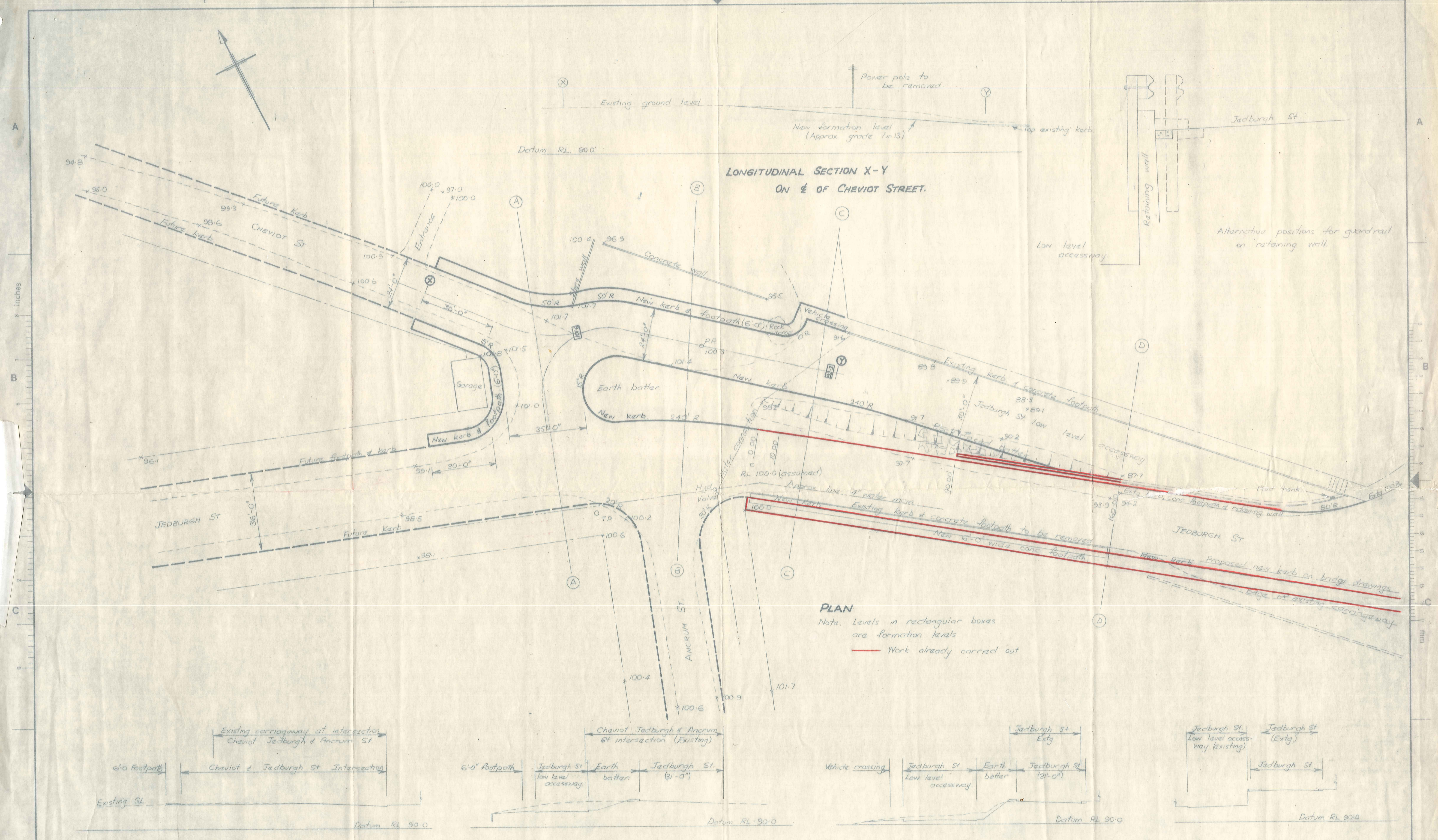
E. R. GARDEN & PARTNERS
 CONSULTING ENGINEERS
 DUNEDIN & INVERCARGILL

A	Layout of intersection & position of footpaths	May 75
B	Walls, reduced, wall shortens	Oct 75
AMENDMENTS		

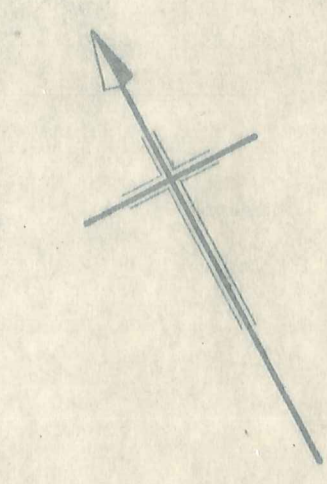
T. H. Jenkins & Associates
 4710/21A Approaches plan & long section
 4710/10B Details of Western approach
 4375-C Intersection details

ROXBURGH BOROUGH COUNCIL			
Designed	Date	May 73	Scale: 20 ft to 1 in
Drawn	Job No.	7028	
Traced	Checked		Survey Ref. L.B. 136.
Approved			

APPROACH TO NEW CLUTHA RIVER BRIDGE			
ALTERATIONS TO APPROACH & PRECEDING INTERS.			
No of Sheets	1	Sheet No.	1
Amendment	A B	DRG No.	R1017

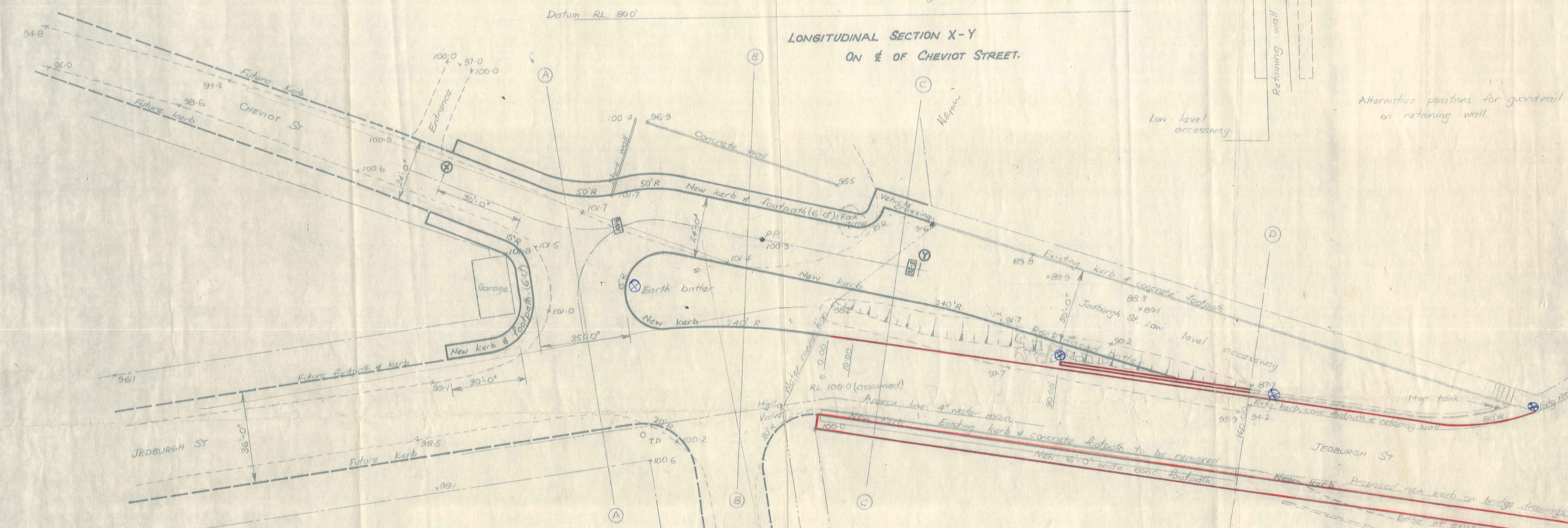


E. R. GARDEN & PARTNERS CONSULTING ENGINEERS DUNEDIN & INVERCARGILL	A Layout of intersection & position of footpaths May 73	T. H. Jenkins & Associates Approaches plan & long section Details of Western approach Intersection details		ROXBURGH BOROUGH COUNCIL			APPROACH TO NEW CLUTHA RIVER BRIDGE			
		4710/21A 4710/19B 4575-6	Designed Drawn Traced Approved	Date May 73 Job No. 7028 Checked Survey Ref. L.B. 136.	Scale: 20 ft to 1 in	ALTERATIONS TO APPROACH & PRECEDING INTERS.				
		AMENDMENTS			RELEVANT DRAWINGS ETC.			No. of Sheets 1	Sheet No. 1	DRG No. R1017
		Amendment A								

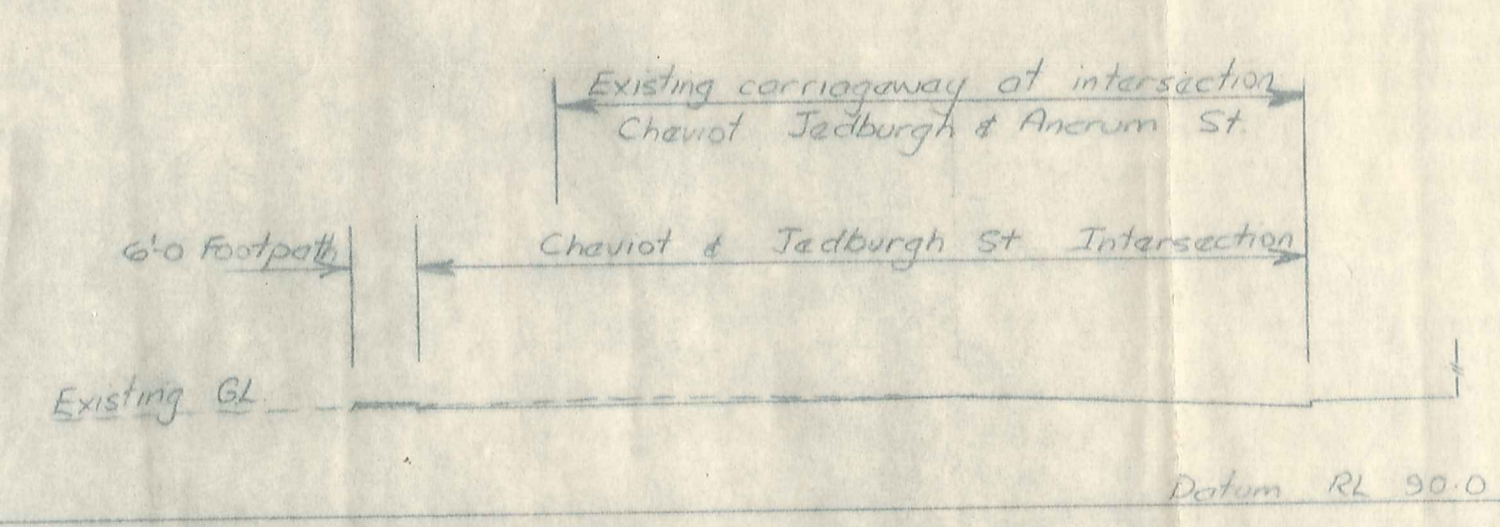


LONGITUDINAL SECTION X-Y ON E OF CHEVIOT STREET.

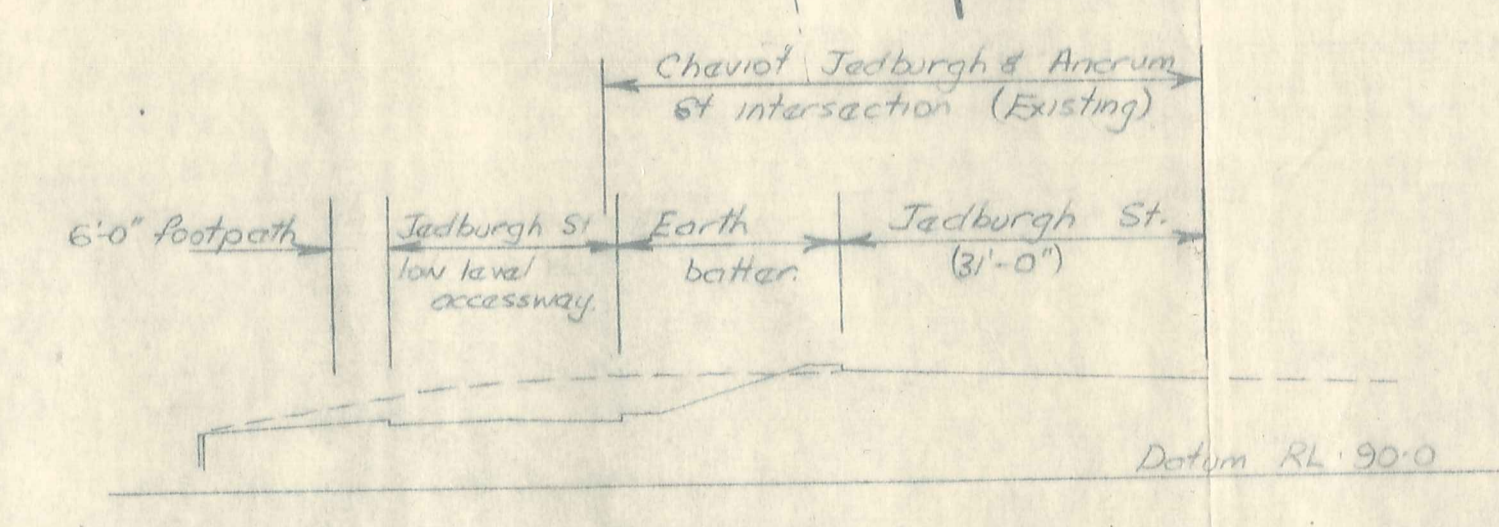
Datum RL 80.0



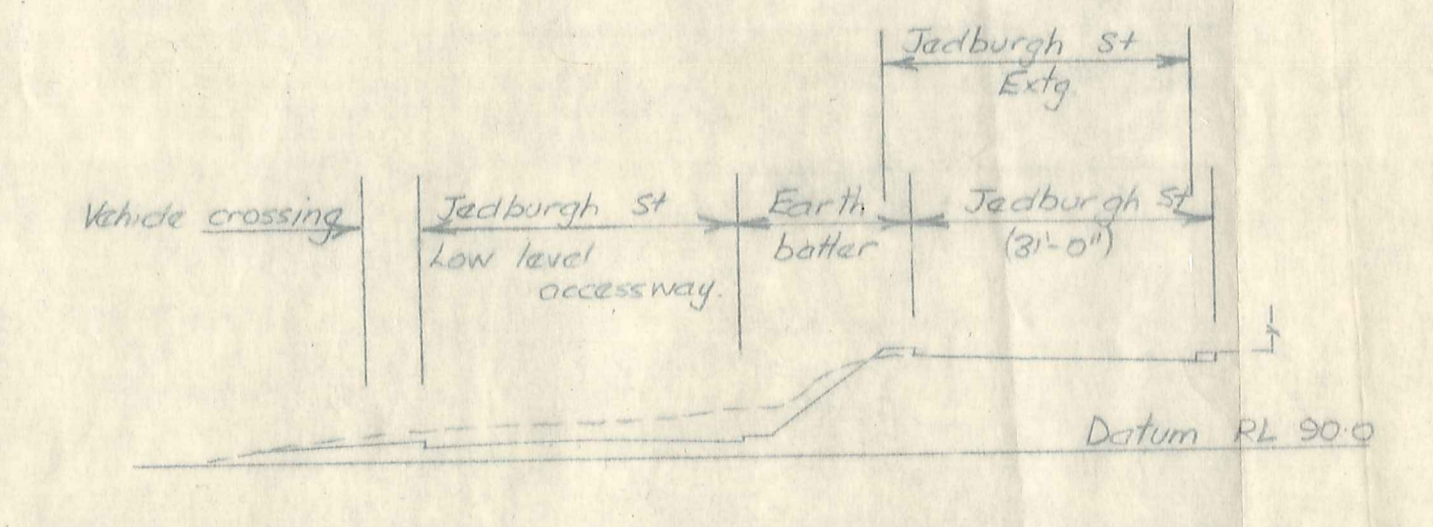
PLAN
Note: Levels in rectangular boxes are formation levels
— Work already carried out



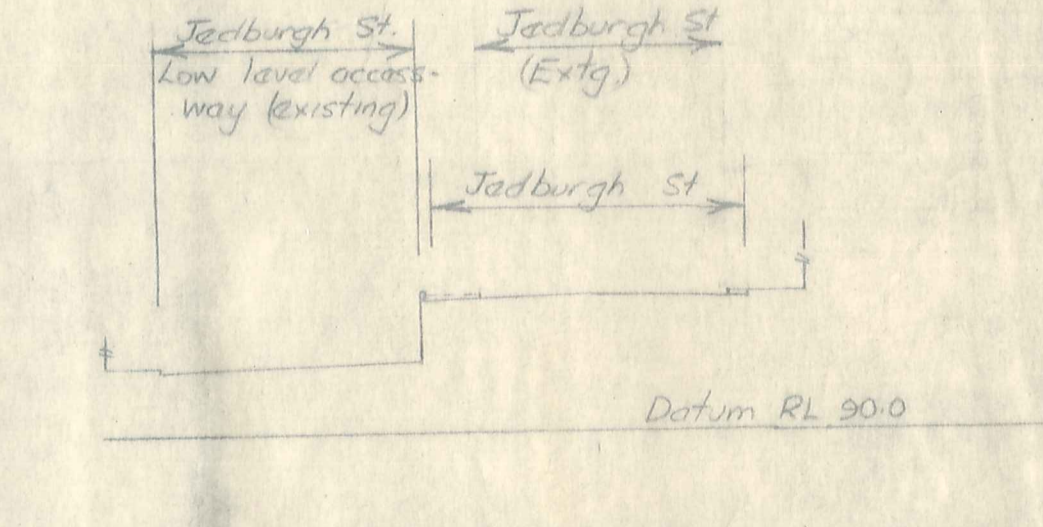
SECTION A-A



SECTION B-B



SECTION C-C



SECTION D-D

E. R. GARDEN & PARTNERS
CONSULTING ENGINEERS
DUNEDIN & INVERCARGILL

A	Layout of intersection & position of footpaths	May 73
AMENDMENTS		

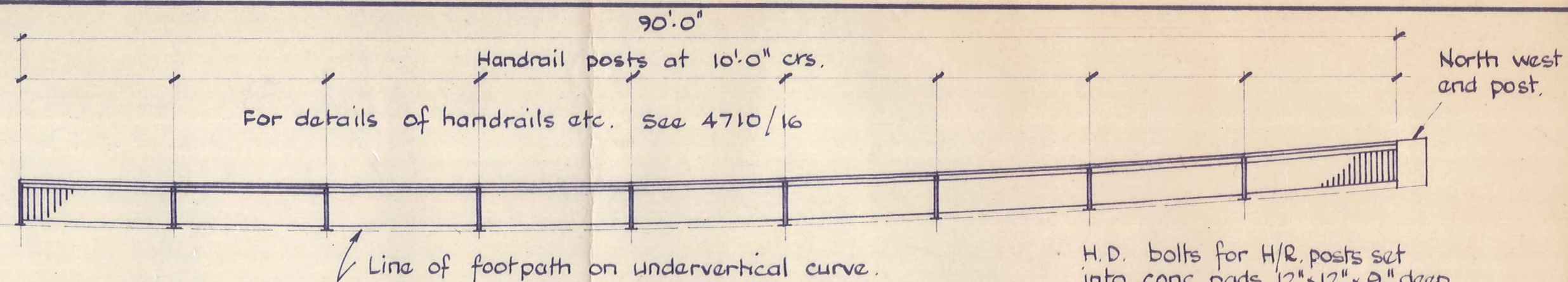
T H Jenkins & Associates
Approaches plan & long section
Details at Western approach
Intersection details

4108/214
4110/128
4375/6

RELEVANT DRAWINGS ETC.

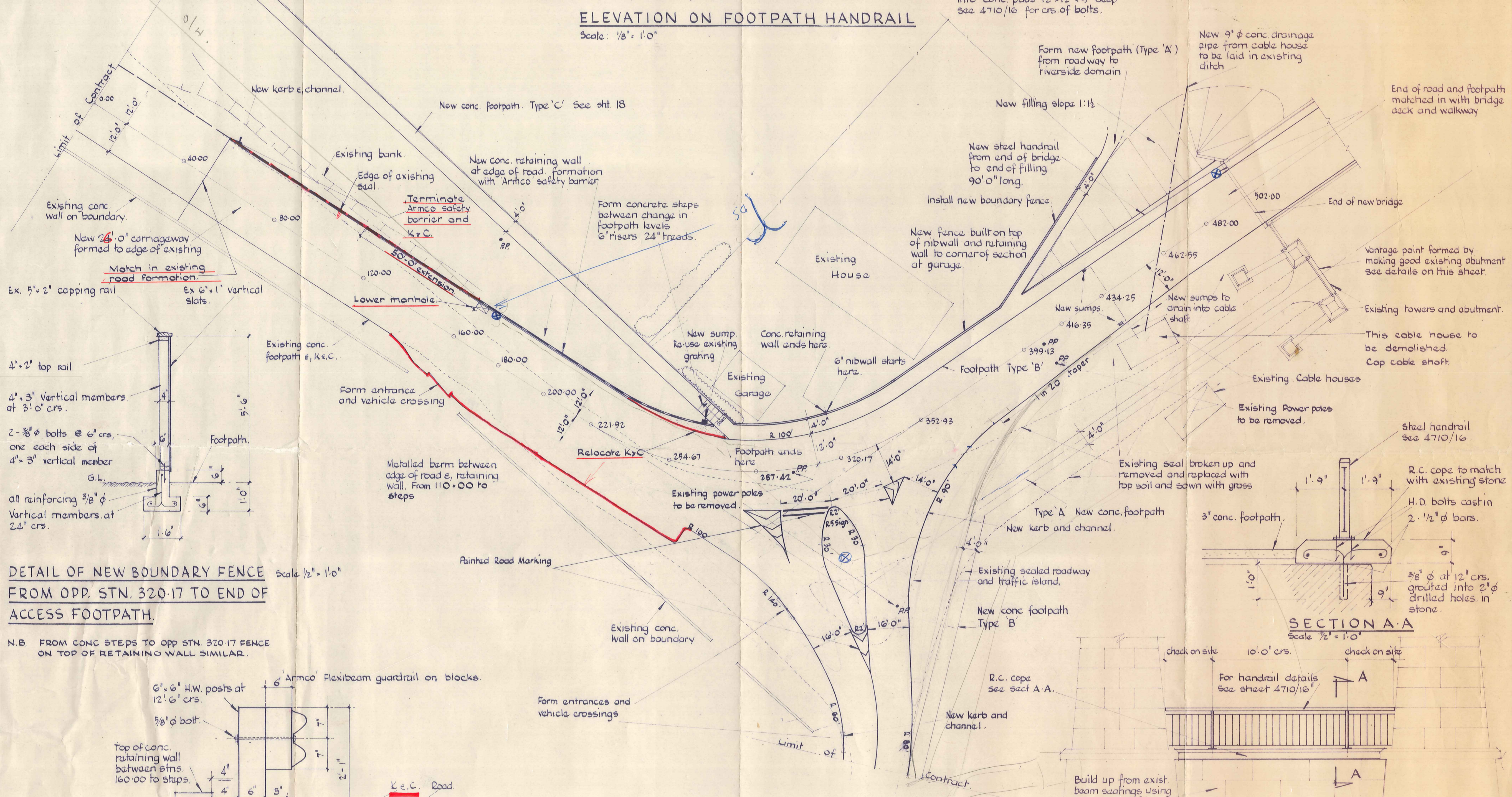
ROXBURGH BOROUGH COUNCIL			
Designed	Date	May 73	Scale: 20 ft to 1 in
Drawn	Job No.	702B	
Traced	Checked		Survey Ref: LB 186.
Approved			

APPROACH TO NEW CLUTHA RIVER BRIDGE			
ALTERATIONS TO APPROACH & PRECEDING INTERS			
No. of Sheets	Sheet No.	DRG No.	R1017
Amendment	A		



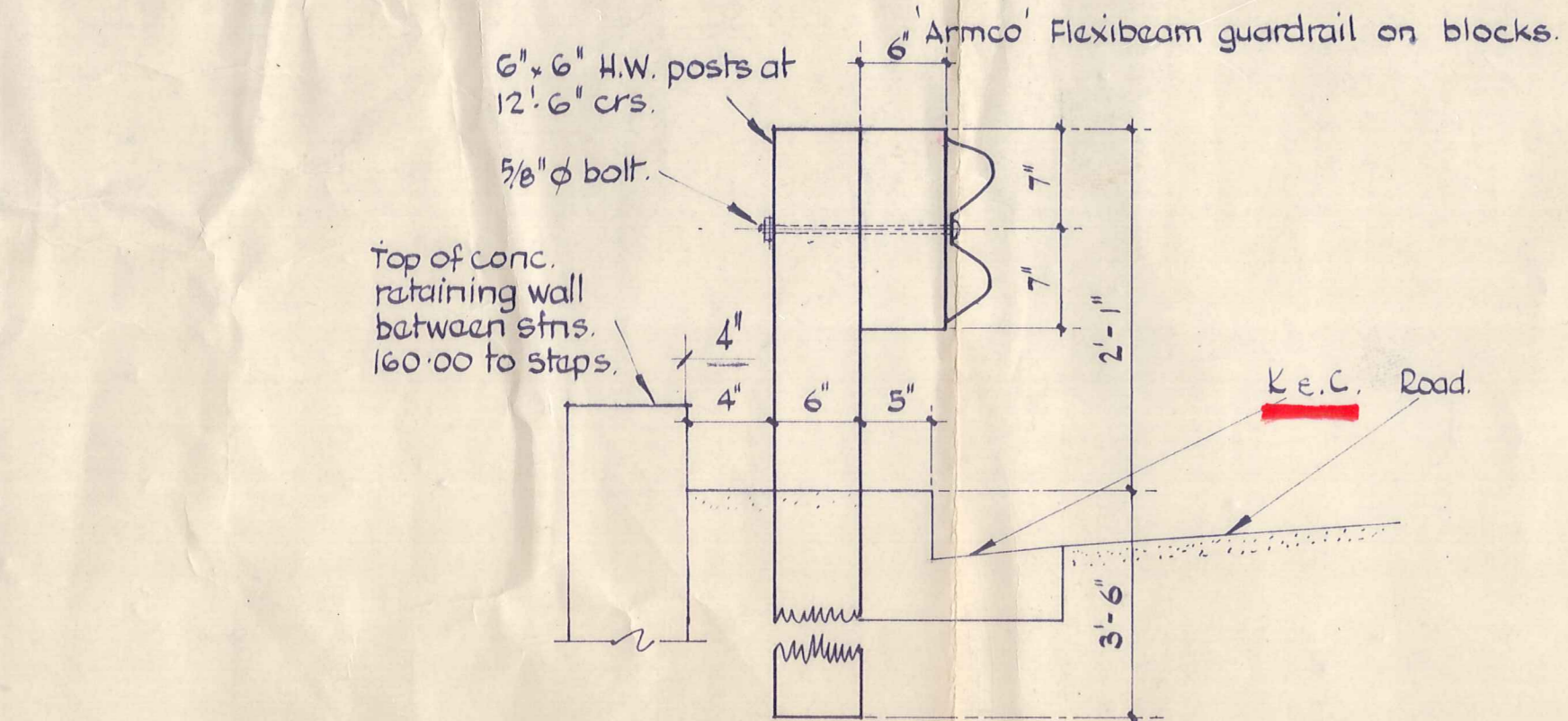
ELEVATION ON FOOTPATH HANDRAIL
Scale: 1/8" = 1'-0"

H.D. bolts for H/R posts set into conc. pads 12" x 12" x 9" deep See 4710/16 for crs. of bolts.



DETAIL OF NEW BOUNDARY FENCE FROM OPP. STN. 320.17 TO END OF ACCESS FOOTPATH.
Scale: 1/2" = 1'-0"

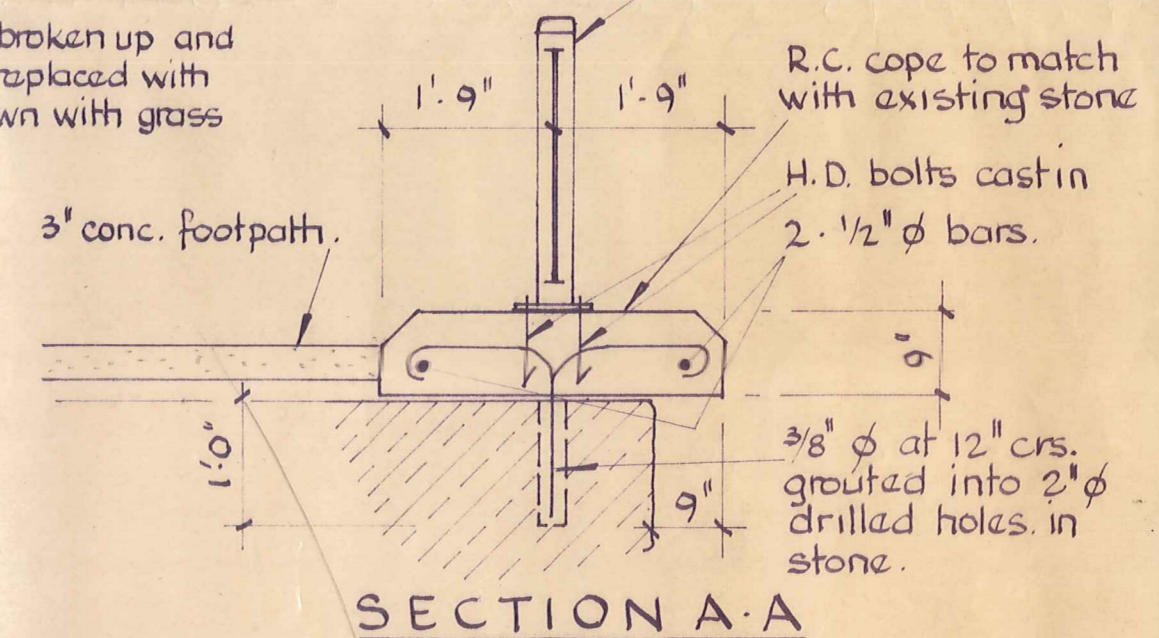
N.B. FROM CONC STEPS TO OPP STN. 320.17 FENCE ON TOP OF RETAINING WALL SIMILAR.



DETAIL OF SAFETY FENCE STN. 0.00 TO STEPS
Scale: 1" = 1'-0"

T. H. JENKINS & ASSOCIATES
THIS DRAWING IS ISSUED FOR INFORMATION ONLY AND MUST NOT BE USED FOR CONSTRUCTION

PLAN AT WESTERN APPROACH
Scale: 20 feet to 1 inch.



SECTION A-A
Scale: 1/2" = 1'-0"

ELEVATION ON VANTAGE POINT LOOKING WEST
Scale: 1/4" = 1'-0"

C	Oct 73	AJS	Cable house demolished. Safety Fence detail amended between stations 50+00, 280+00.
B.	May 72	AW	Traffic island amended.
A	Apr 72	AW	Traffic island amended.
no	date	app'd	revision

TUAPEKA COUNTY COUNCIL
ROXBURGH BOROUGH COUNCIL

T.H. JENKINS & ASSOCIATES
CONSULTING CIVIL & STRUCTURAL ENGINEERS
55-59 GALA STREET INVERCARGILL N.Z.
PO Box 93 Phone 82-429

drawn: [initials] date: Jan 1971 scale: as shown
designed: P.R.D. checked: [initials] approved: [initials]

ROXBURGH BRIDGE

DETAILS AT WESTERN APPROACH

no in set: 18 drawing no: 4710/17C