

In your reply, please  
quote this number

28  
677 f

MEMORANDUM.

From

THE SURVEY OFFICE,

DUNEDIN, N.Z.

Oct 29 1886



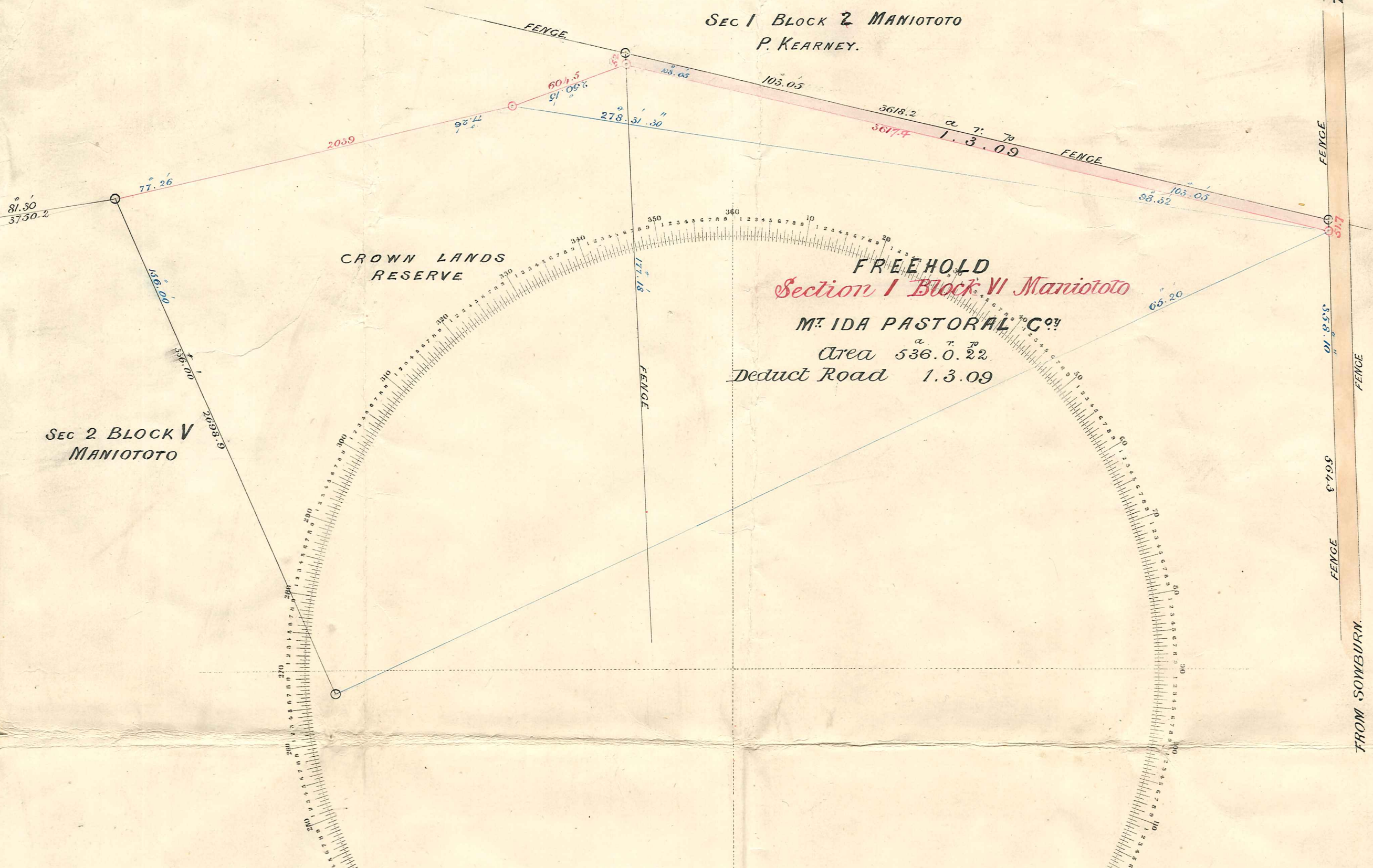
To the Chairman  
Maniototo County  
Naseby.

The enclosed plan which was sent to this office by your County Eng<sup>r</sup>. in answer to a memo by my predecessor dated 6.5.84 I find had been lodged in the Land Transfer office here instead of having been returned to you. I now do so, so that steps may be taken to legalize the road. The fact of the plan having a declaration & Stamp thereon, the same as required by L. T. plans was misleading

L. W. Adams Chief Surveyor

28  
6770

General Survey Department of New Zealand  
Provincial District of OTAGO



J. Richard Henry, Province of Otago, a surveyor duly licensed under "The Land Transfer Act 1870 Amendment Act, 1871", do solemnly and sincerely declare and certify that the parcels of land hereon delineated have been surveyed and pegged on the ground and plotted, in accordance with the instructions issued by the Surveyor General for the guidance of surveyors under the Land Transfer Acts, and that this map is in all respects accurate.

And I make this solemn declaration conscientiously believing the same to be true, and by virtue of an Act of the General Assembly of New Zealand entitled the Justices of the Peace Act 1882

Declared at Haseby this 5<sup>th</sup> day of January one thousand eight hundred and eighty four before me *[Signature]* a Justice of the Peace for the Colony of New Zealand.

All that piece or parcel of land, containing by admeasurement 11 acre 3 roods 9 perches more or less situated in the Survey District of Maniototo, Provincial District of Otago being portions of Sec. 1. Block VI. Maniototo, commencing at South East corner of Sec. 1. Block 2. Maniototo, being bounded on the East by Public Road for 51.7 links or thereabouts, thence on the South by Sec. 1. Block VI. Maniototo for 3617.7 links or thereabouts, thence on the West by Crown Land for 52 links or thereabouts, thence on the North by Sec. 1. Block 2. Maniototo for 3618.2 links or thereabouts to commencing point.

*Rich<sup>d</sup> H Browne  
Maniototo County Engineer.*



Field Sketch of *[illegible]* Road line purchased by S. 1. Block VI. MANIOTOTO District.  
the Maniototo County Council from the M<sup>r</sup> Ida Pastoral Co<sup>y</sup>  
Surveyed by *Rich<sup>d</sup> H Browne* Maniototo County Engineer  
Date *Jan<sup>y</sup> 4 1884*

Scale 5 Chains to an Inch

NOTE Measured lines to be drawn in red, calculated or scaled lines in black, observed bearings in blue the figures also being in red black and blue respectively. Draw a red circle round each peg, a double red circle round each trig station. Remarks of Surveyor to be noted on back hereof.

(Otago Survey Lithographic Press)

Price 1/1  
M. 37



Sold 29.1.81  
M<sup>r</sup> 460  
65 13  
73. 157