

PLATE LAYOUT - INSIDE VIEW

NOTE: PLATE WIDTHS DETERMINED BY NUMBER OF HOLES IN END OF PLATE SHOWN AS 4, 6 OR 7.

IMPORTANT: BEFORE STARTING TO ASSEMBLE PIPE ARCH READ 'ASSEMBLY AND INSTALLATION' INSTRUCTIONS ON FORM 'S 361' AND NOTE BELOW.

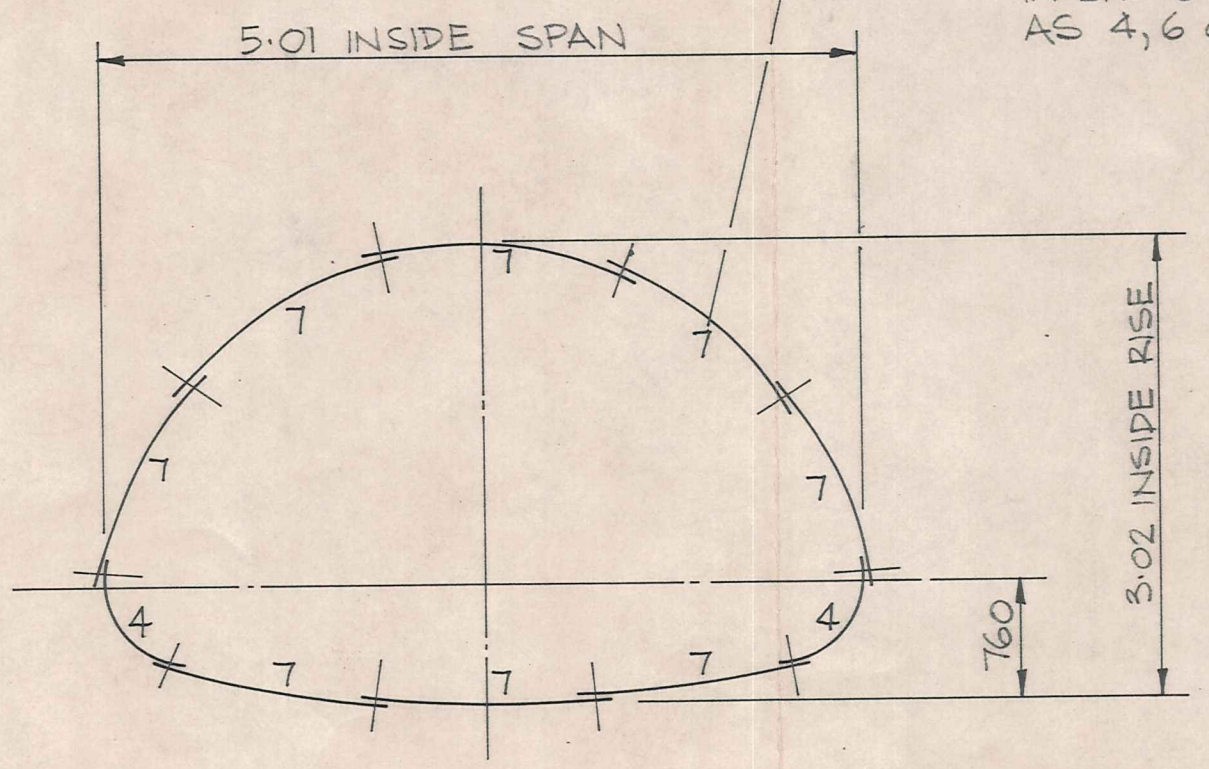
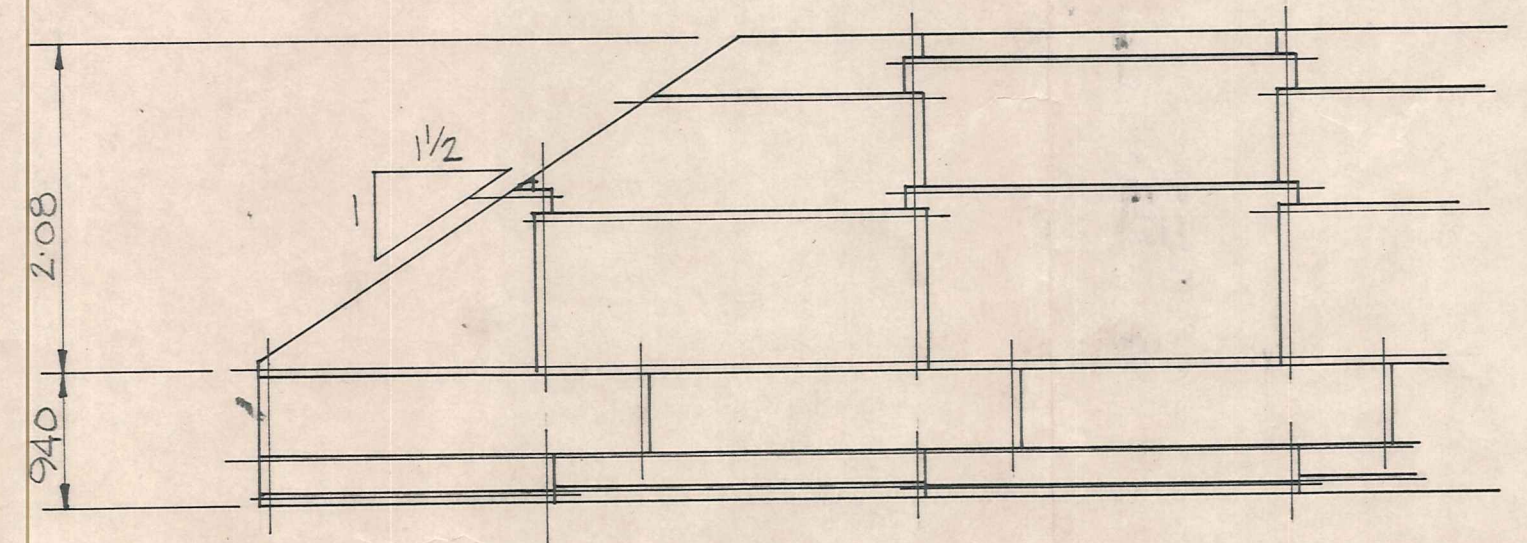
NOTE: CIRCLED NUMBERS ARE MARKS FOR CUT PLATES AND ARE WELD MARKED ON THE PLATES

PLATES ARE CURVED TO THREE DIFFERENT RADII AND ARE IDENTIFIED AS FOLLOWS:-
 SMALLEST RADIUS = CORNER PLATES, COLOUR CODED YELLOW, PREFIXED 'C'
 MIDDLE " = TOP " " " BLUE, " " 'T'
 LARGEST " = BOTTOM " " " RED, " " 'B'

FIRST LAY BOTTOM PLATES B1 TO B45 CHECK ALIGNMENT AND TIGHTEN THE BOLTS BEFORE ASSEMBLING FURTHER.
 COMPLETE ASSEMBLY OF CORNER AND TOP PLATES C46 TO T134 IN NUMERICAL ORDER SHOWN

PLATE MARKING CODE (STAMPED ON EVERY PLATE)

EG. DENOTES: 7390 RADIUS OF CURVATURE OF PLATE (mm) 1092 FACTORY JOB NO. 4 PLATE THICKNESS (mm)



Issue	Revision	Date	Scale

VINCENT COUNTY COUNCIL - SHEPPERD CREEK
 ARRANGEMENT OF MULTI-PLATE PIPE-ARCH

CORRUGATED STEEL PRODUCTS
 A DIVISION OF THE FLETCHER INDUSTRIES LIMITED
 PRIVATE BAG, AUCKLAND, N.Z.

Licensed Manufacturer & Distributor of the products of Armco Steel Corporation

Drawn P.F.M.
 Checked [Signature]
 Date 25.3.80

DRAWING No.
 1092-1