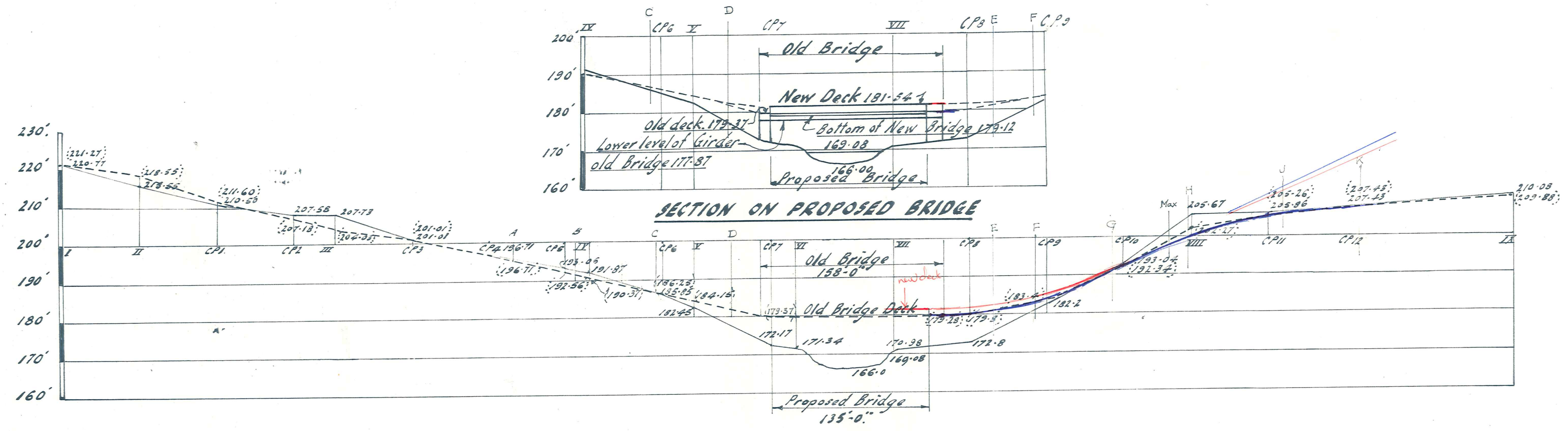


LOCALITY PLAN
Scale: 1 inch = 1 mile.

SITE PLAN
Scale: 1" = 100 links
Note: Boring site shown thus - x N°1.



LONGITUDINAL SECTION ON EXISTING BRIDGE
Dotted levels thus: 194-5 are existing road.
Levels thus 170-38 are ground level on E of Proposed Bridge.

MANIOTOTO COUNTY COUNCIL
Thames COUNTY CLERK
J. M. W.

Scale: 1 inch = 100 links Horizontal
1 inch = 20 ft. Vertical

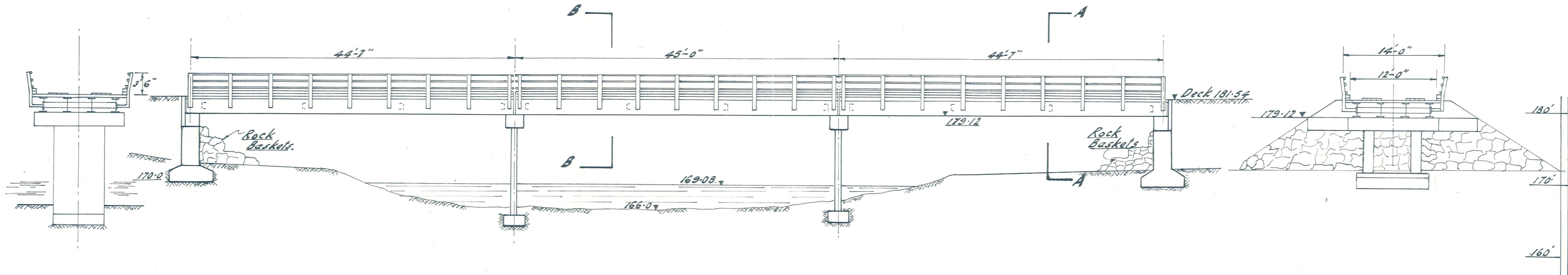
MANIOTOTO COUNTY COUNCIL.

STYX BRIDGE.
LOCALITY AND SITE PLAN.

AMENDMENTS				NAME	DATE
No.	By	Date	Description		
				R. M. George	Dec. 1965
				A. J. Harrison	Feb. 1966
				R. A. Warden	Feb. 1966
					Feb. 66

DUFFILL, WATTS & KING
CONSULTING CIVIL & STRUCTURAL ENGINEERS
DUNEDIN & INVERCARGILL N.Z.

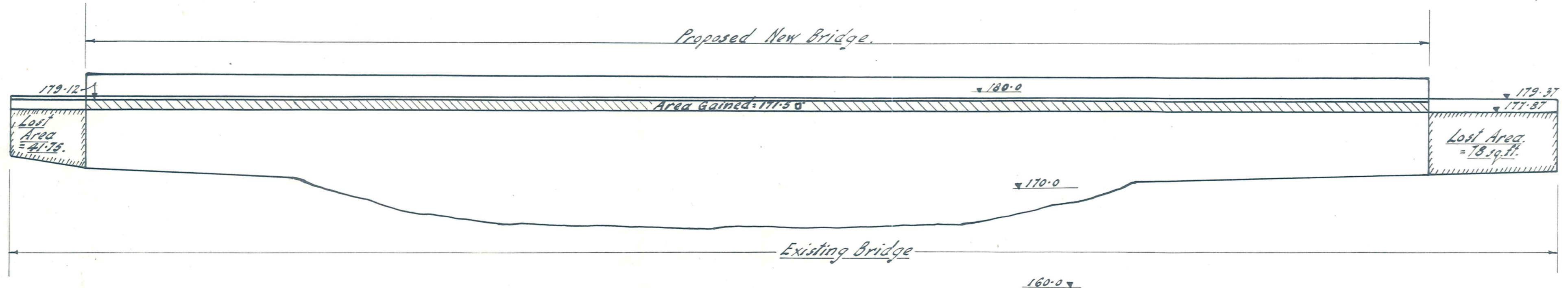
File	JOB No.
L. Bk.	4609/1
F. Bk.	Sheet of Sheets



CROSS SECTION ON B-B.

ELEVATION OF BRIDGE
Scale: 1/8"=1'-0"

CROSS SECTION ON A-A.



ELEVATION SHOWING AREAS LOST AND GAINED IN WATERWAY

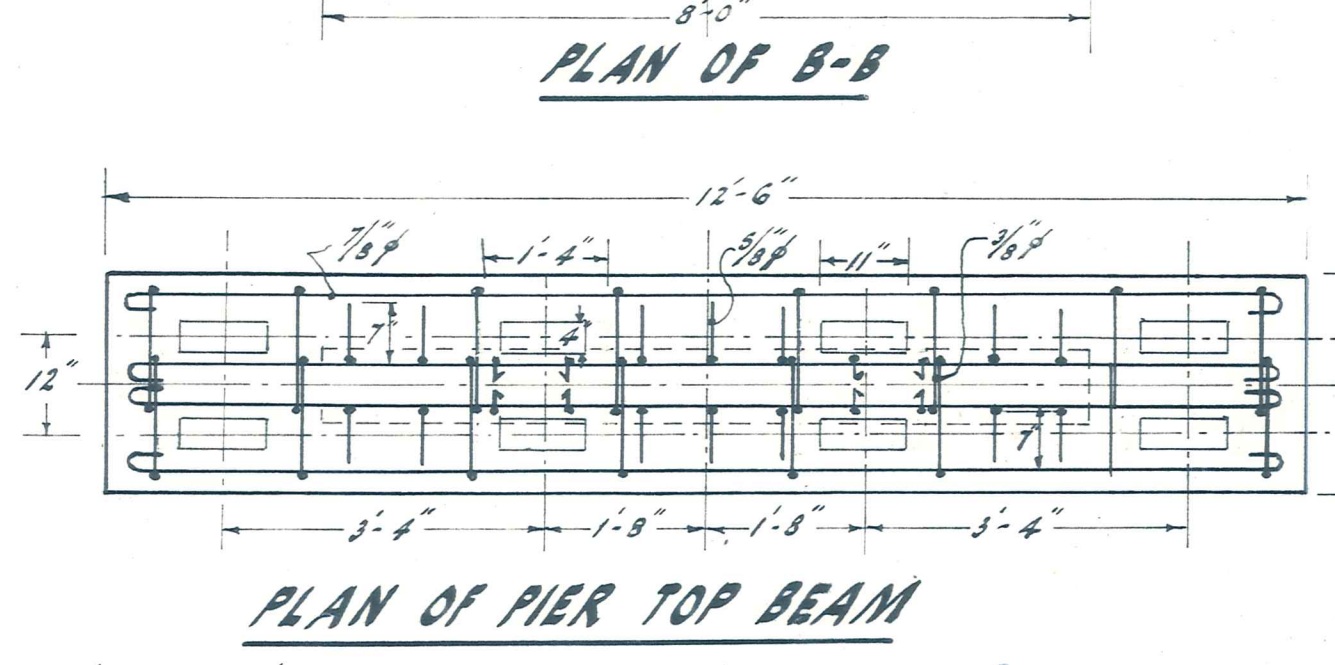
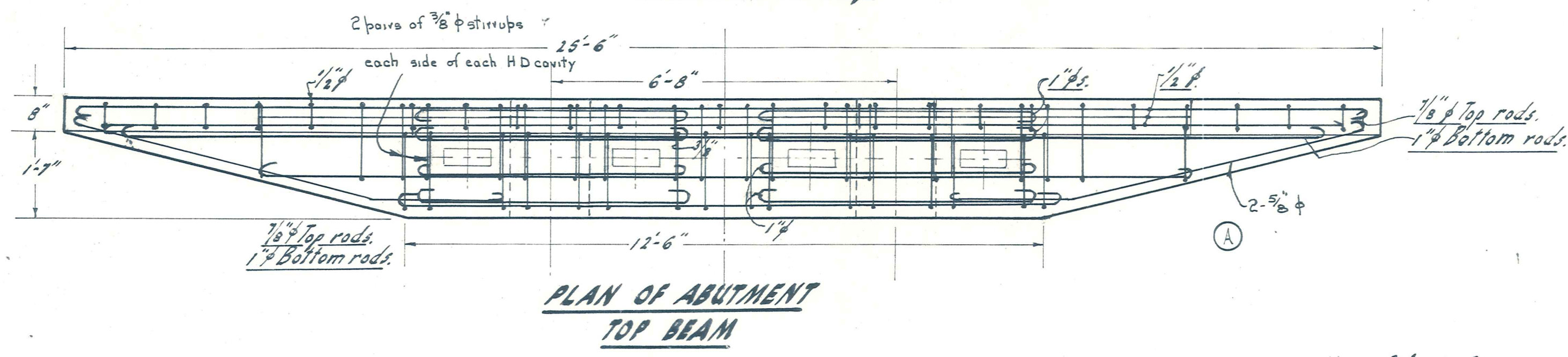
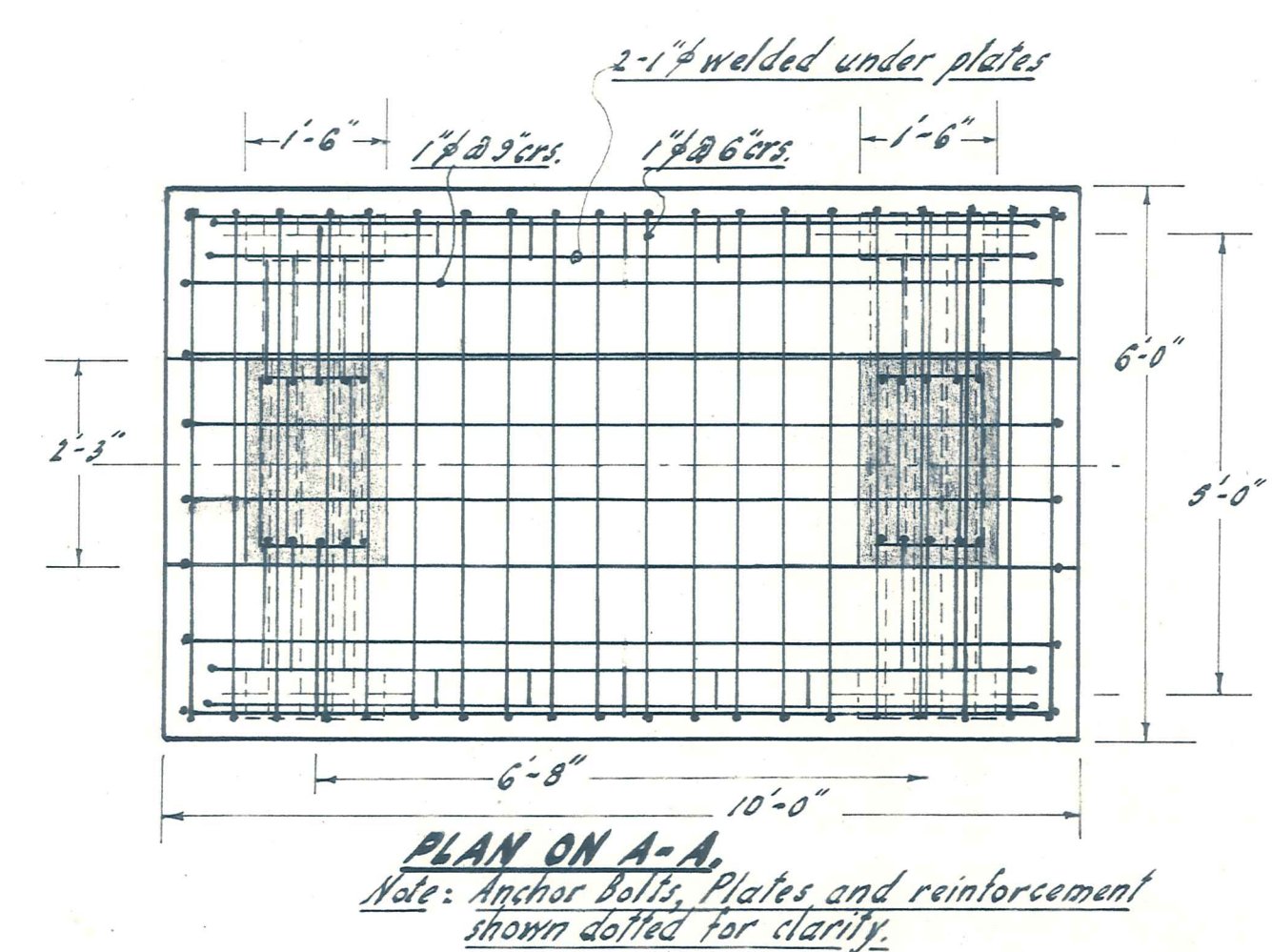
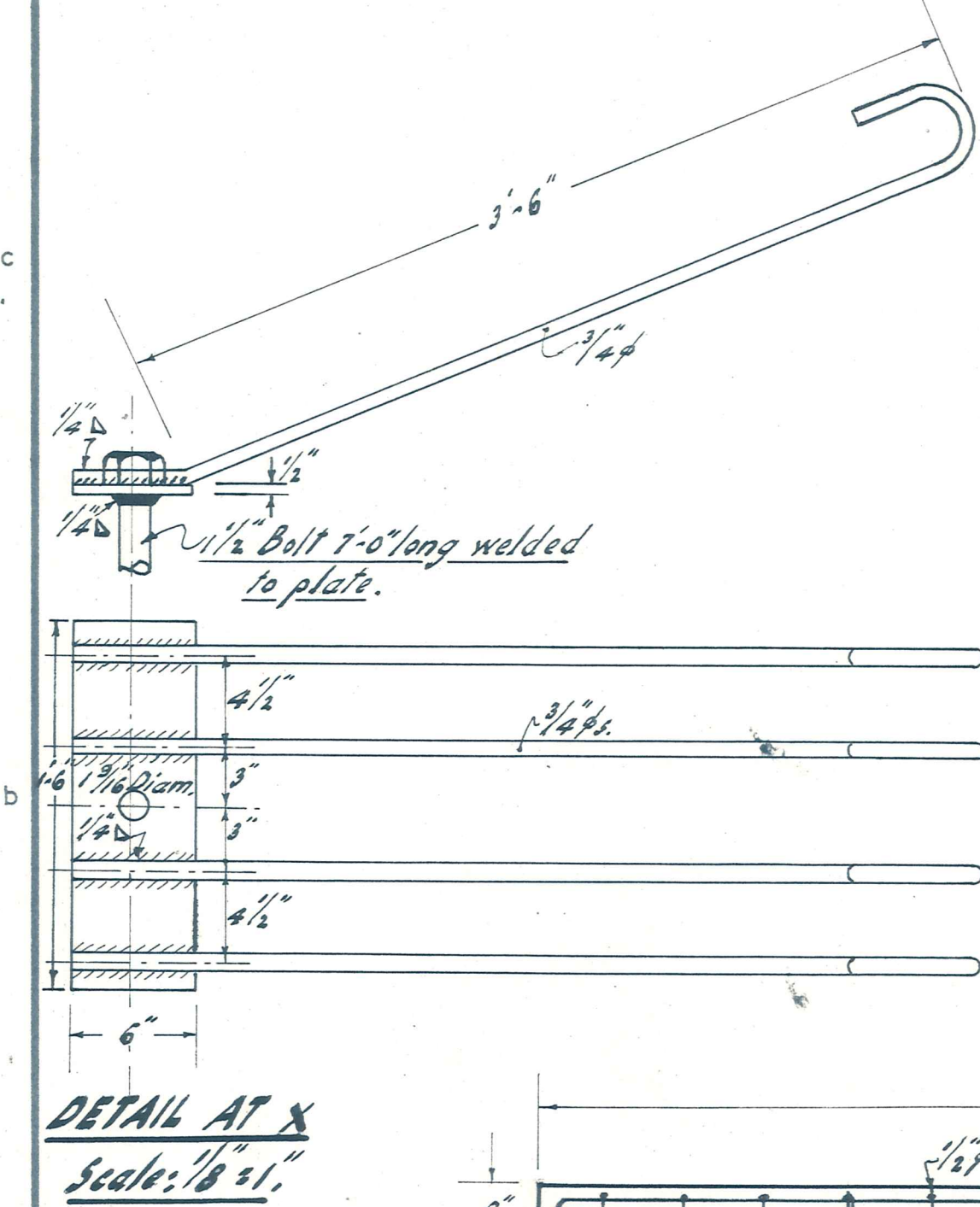
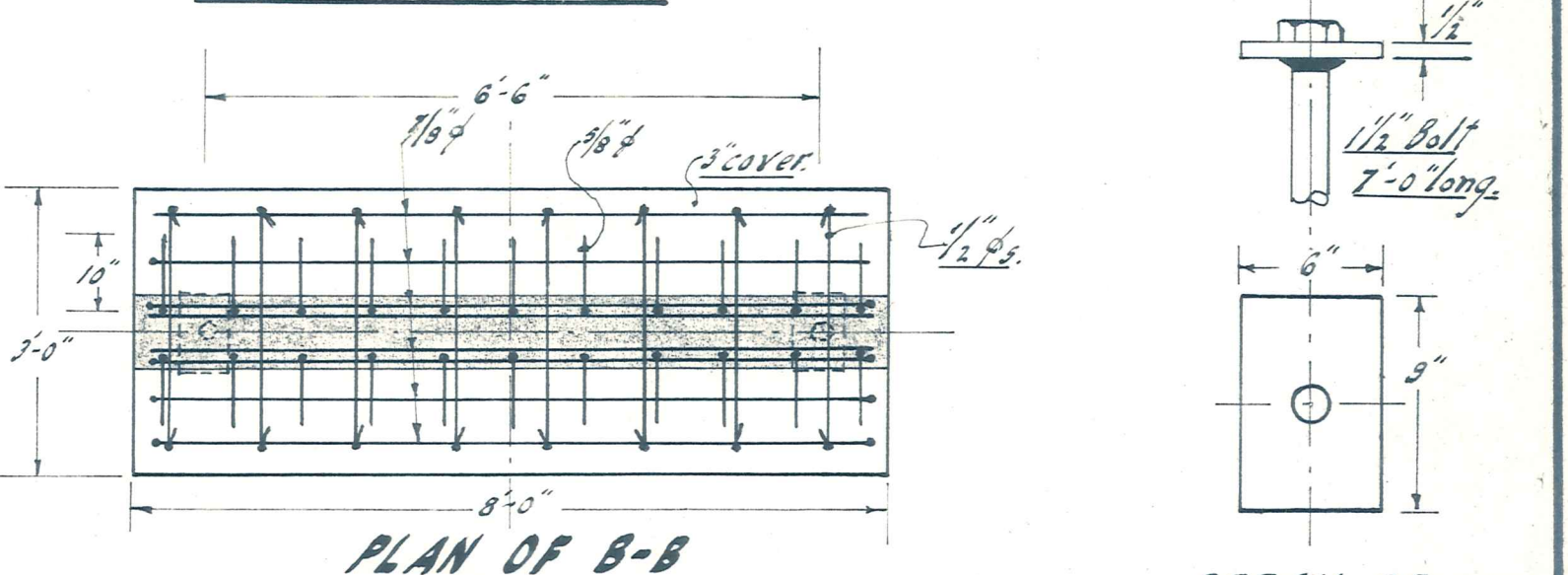
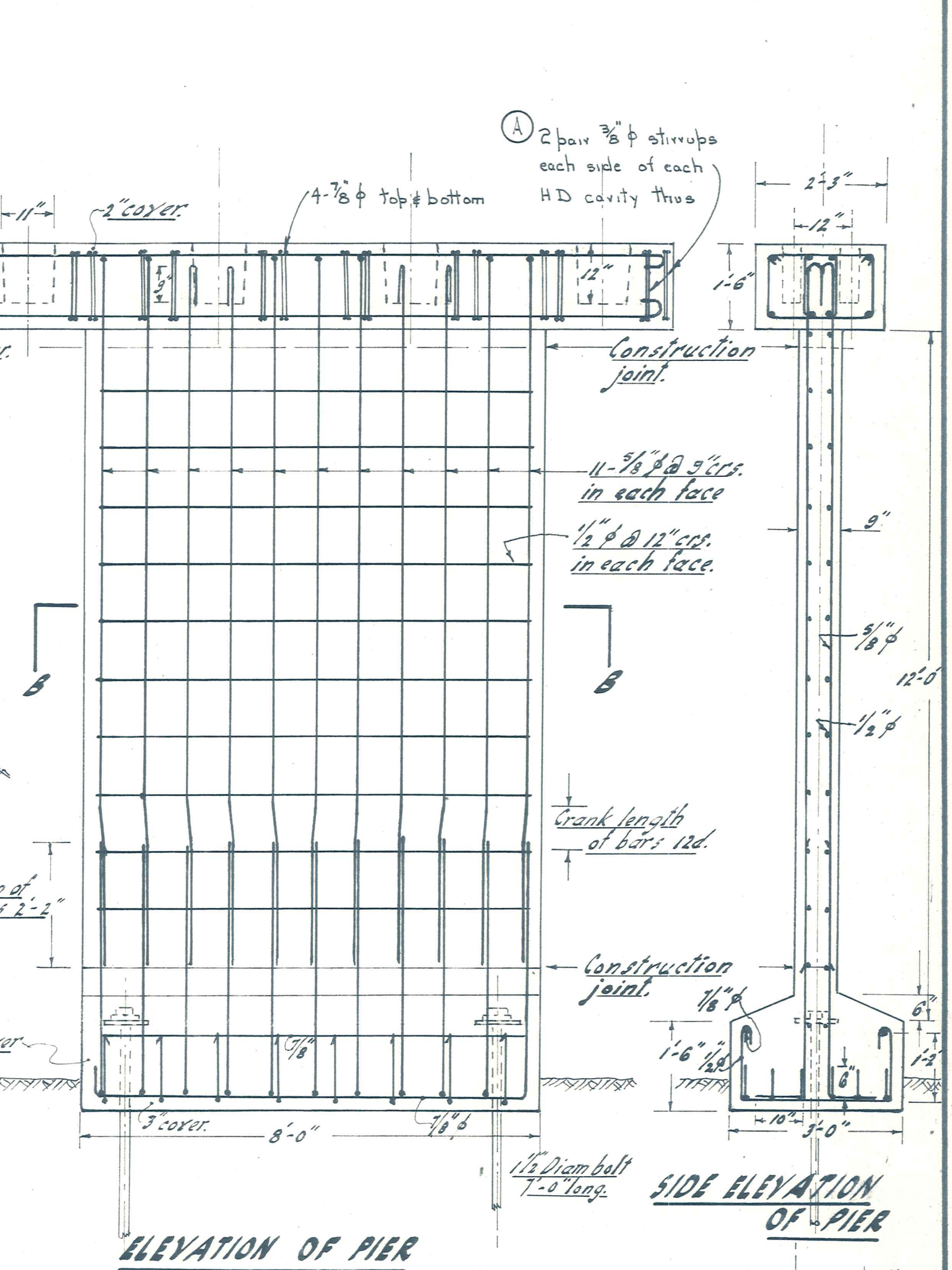
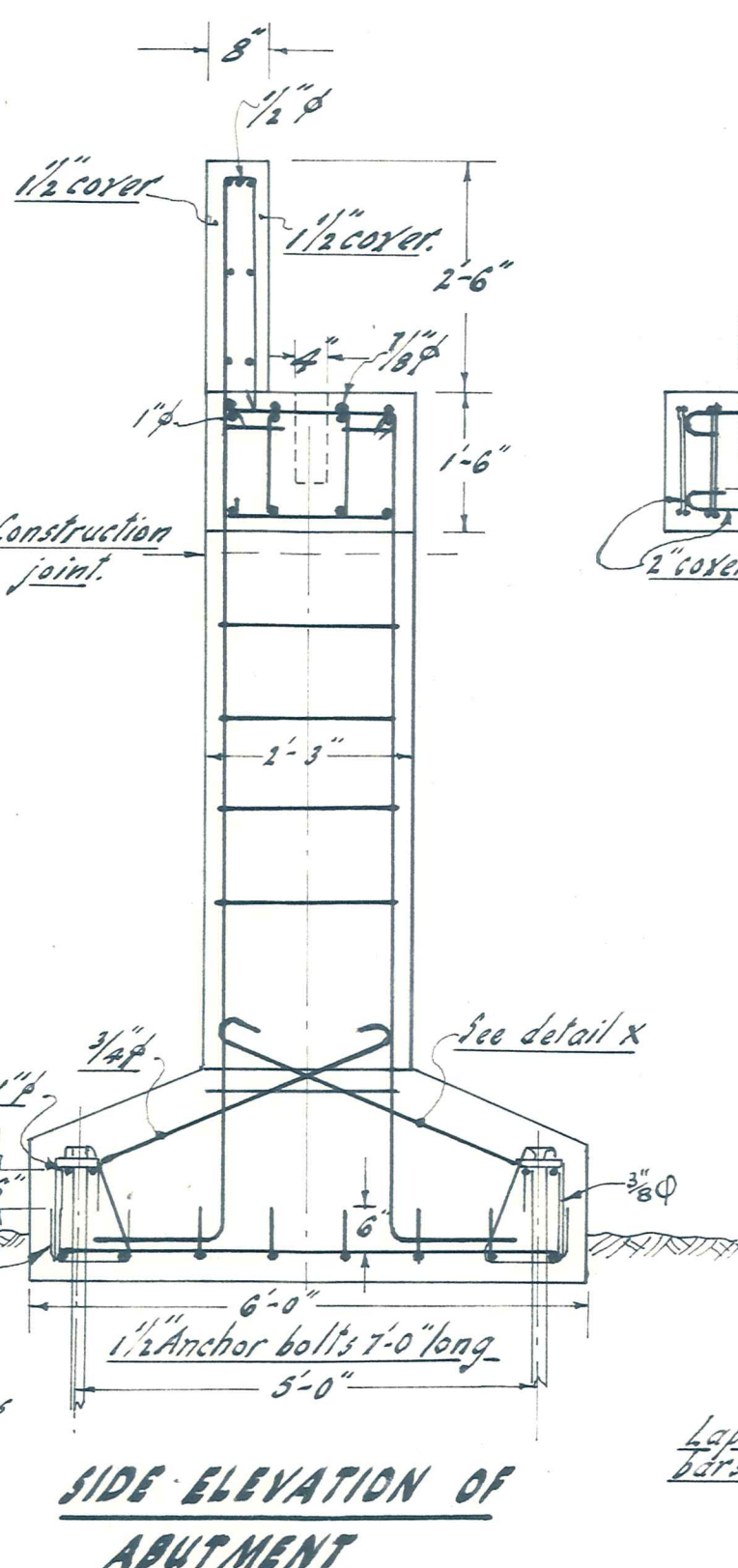
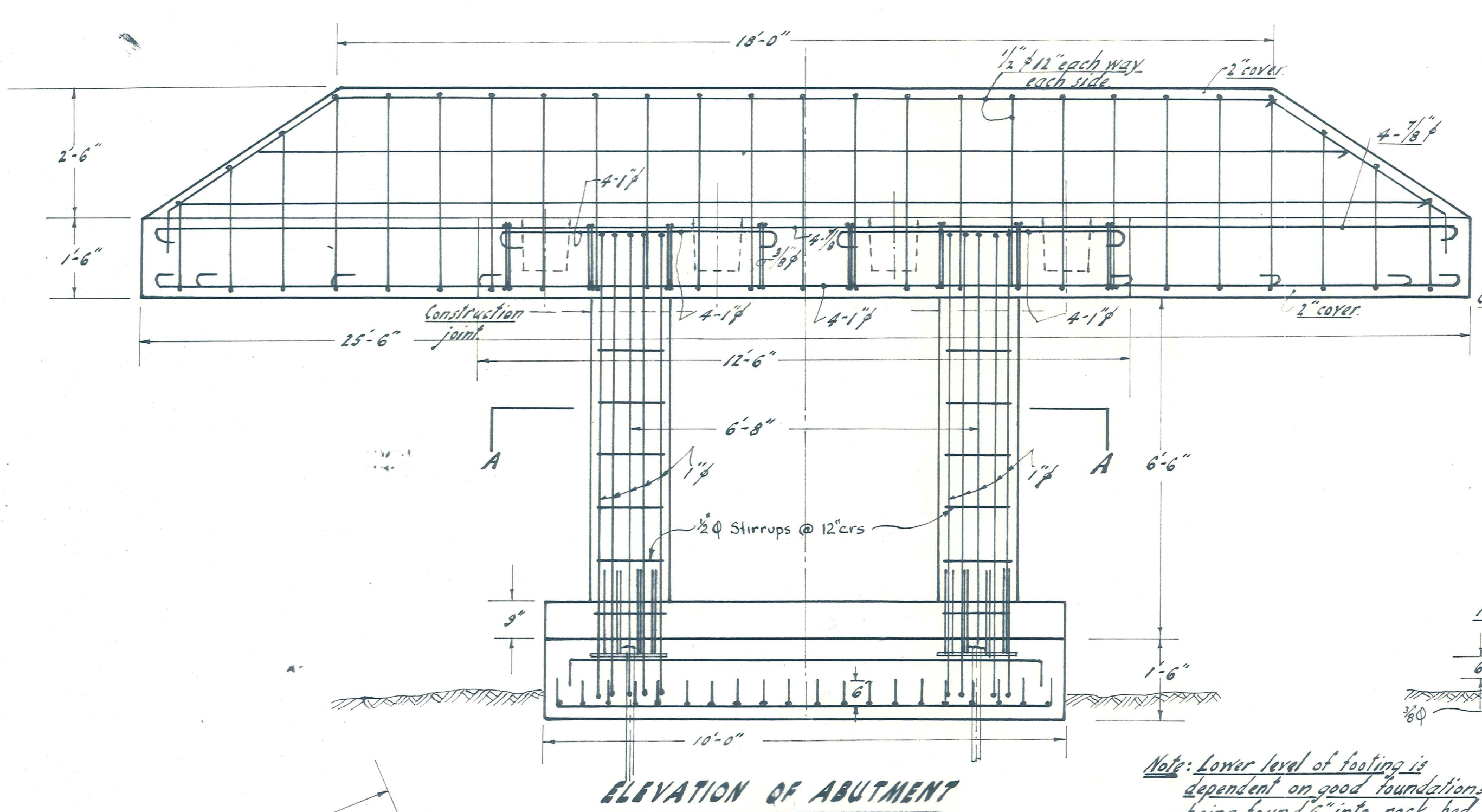
MANIOTOTO COUNTY COUNCIL

STYX BRIDGE TAIERI

AMENDMENTS					NAME	DATE
No.	By	Date	Description	Apprd.		
					R. McGeorge	Dec. 1965
					S. J. Harpison	Feb. 1966
					R. Allworden	" "

DUFFILL, WATTS & KING
CONSULTING CIVIL & STRUCTURAL ENGINEERS
DUNEDIN & INVERCARGILL N.Z.

MANIOTOTO COUNTY COUNCIL
COUNTY CLERK
JOB No. 4609/2
Sheet of Sheets

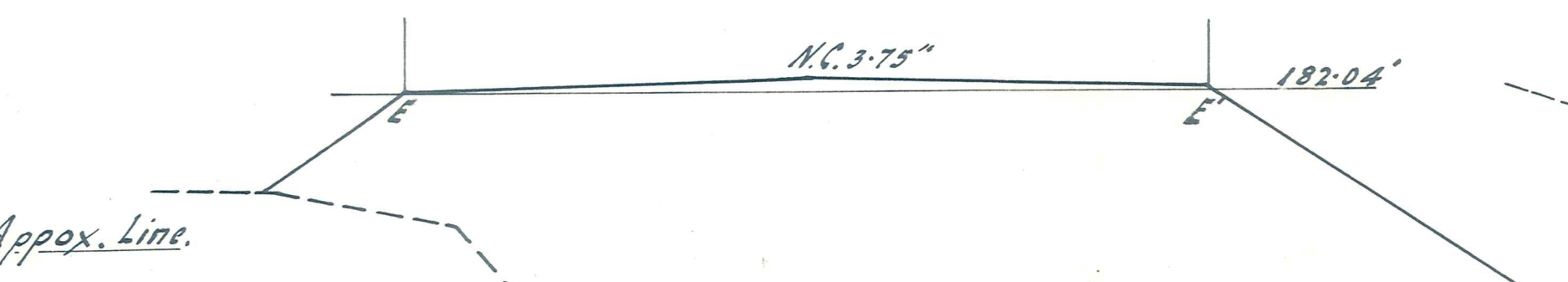
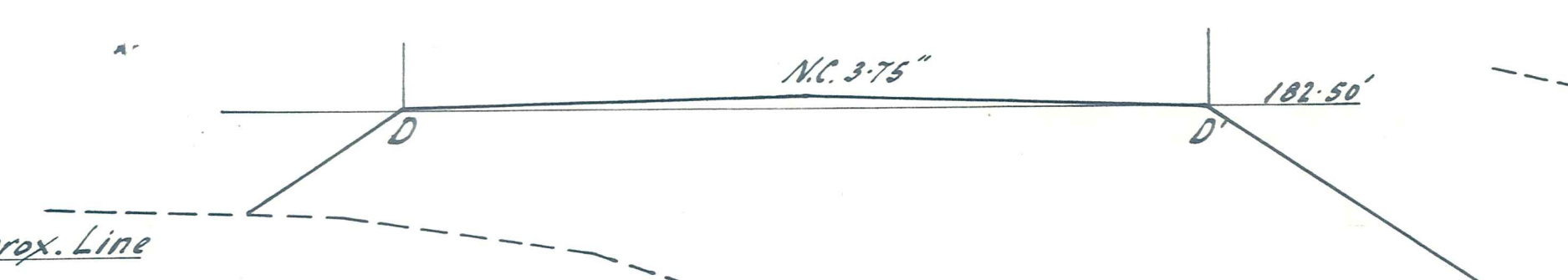
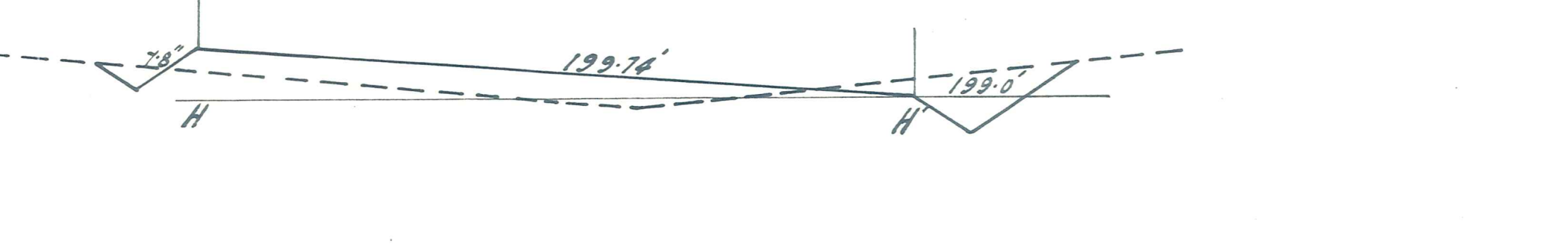
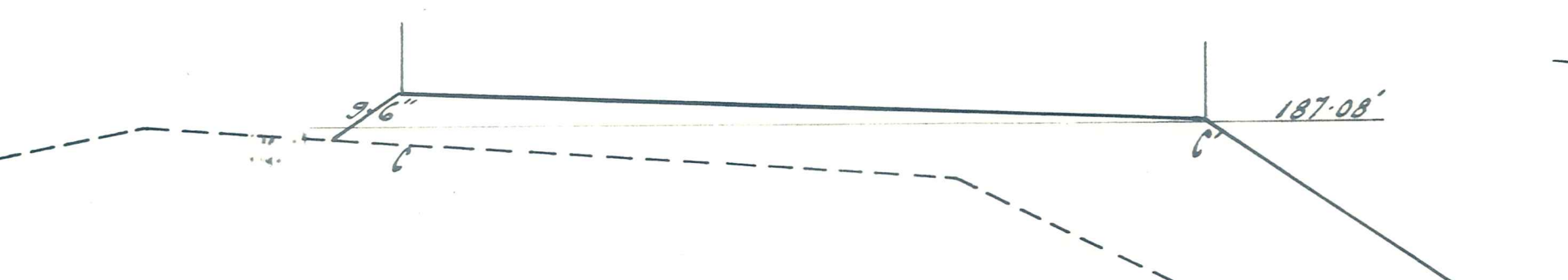
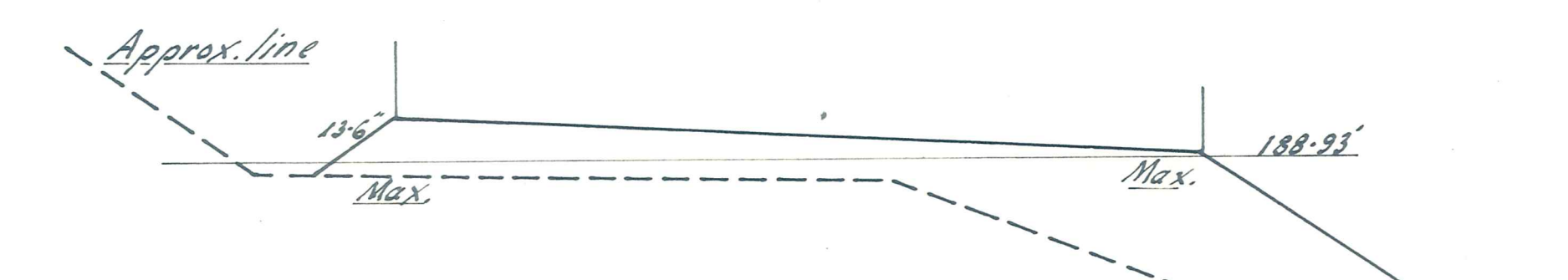
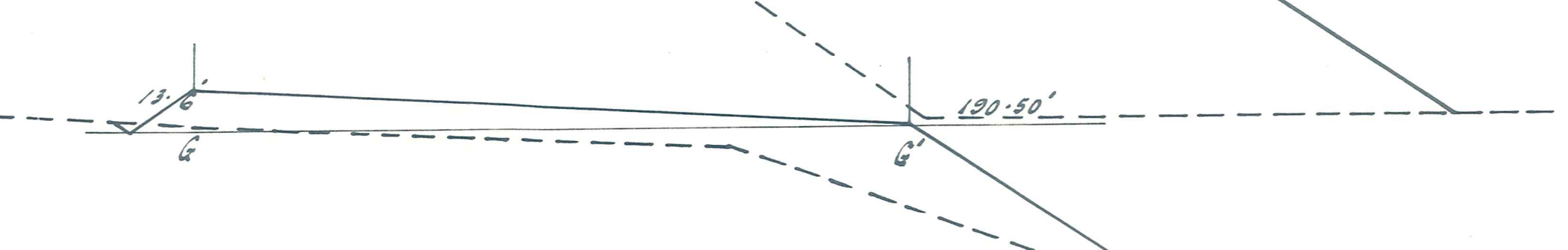
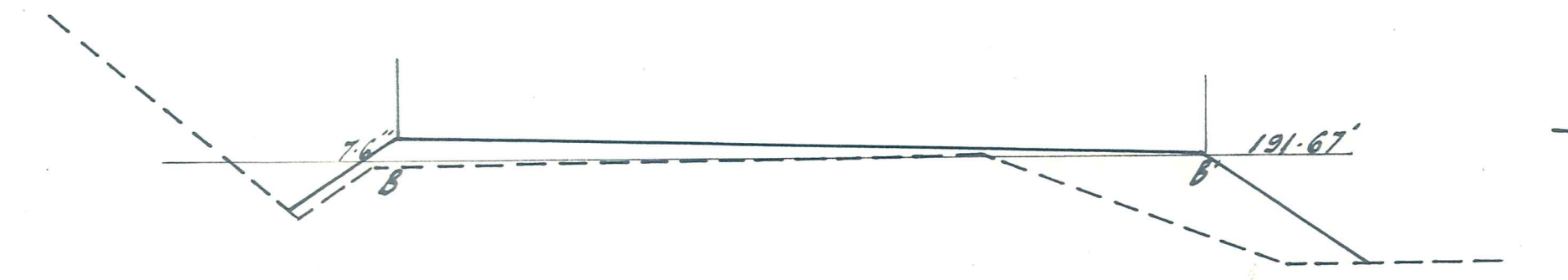
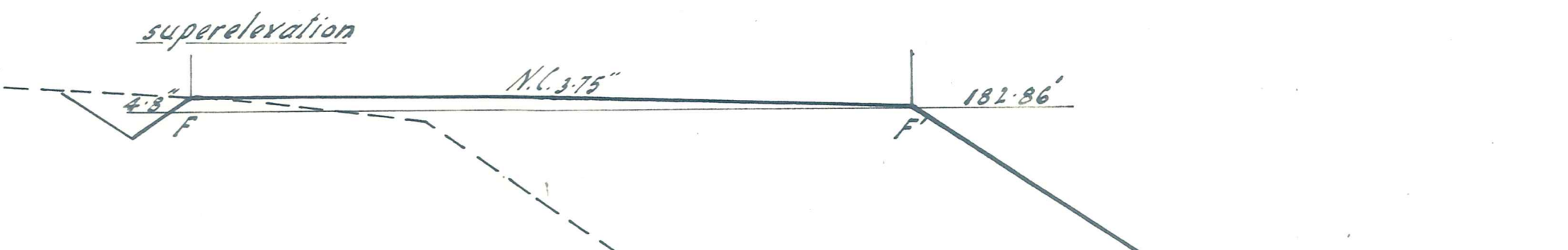
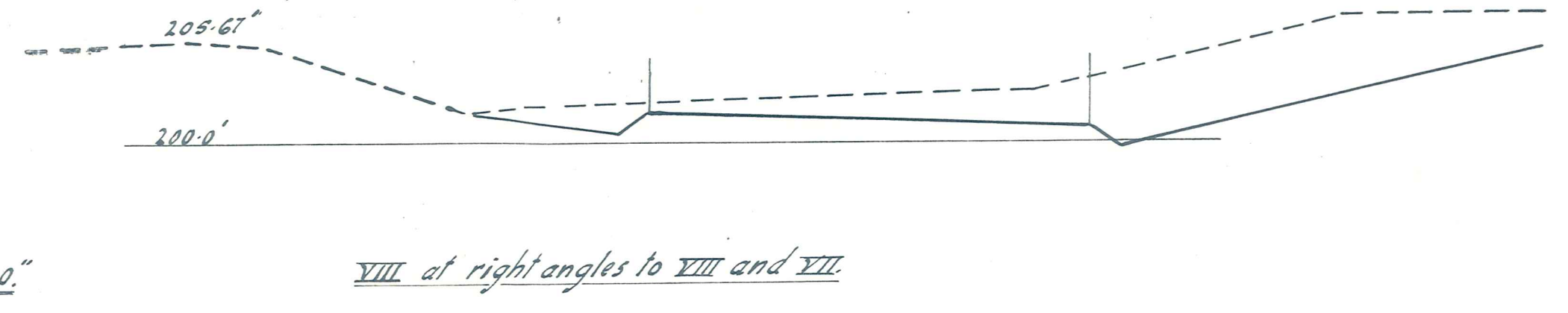
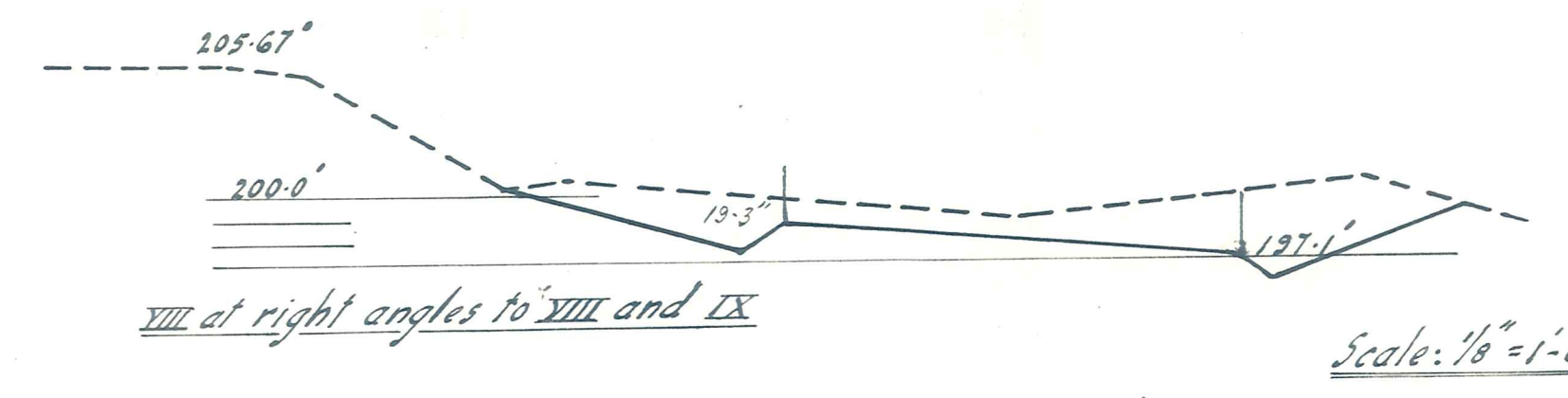


Note: Lower level of footing is dependent on good foundations being found 6" into rock bed.

Note: Refer to Drawings Nos. 4579/3, 4579/4 & 4609/2 for Handrailing details, Steelwork and General arrangement of Bridge.

MANIOTOTO COUNTY COUNCIL
COUNTY CLERK
Scale: 1/2" = 1'-0"

MANIOTOTO COUNTY COUNCIL.		STYX (PAERAU) BRIDGE.		AMENDMENTS		NAME		DATE		DUFFILL, WATTS & KING		File	JOB No.
				No.	By	Date	Description	Apprd.	Surveyed	8. M. George	Dec. 1965	L. Bk.	4609/3
				A	J.P.	17/5/66	Stirrups Added to abutment pier caps.	IRP	Drawn	S. Harrison	Feb. 1966	F. Bk.	
				B	B.J.C.		2-3/8" face rods added to abutment wings.		Traced	R. Allwarden	March 66		
							Abut. Col. Stirrups to be 3" Dia.		Checked				
									Approved				Sheet of Sheets



Note: Existing sections shown dotted

Scale: 1/4" = 1'-0"

MANIOTOTO COUNTY COUNCIL
[Signature]

MANIOTOTO COUNTY COUNCIL

STYX (PAERAU) ROAD SECTIONS, APPROACHES.

AMENDMENTS				NAME	DATE
No.	By	Date	Description		
				R.M. George	Oct. 1965
				S. Harrison	12.12.66
				R. Allwood	March 66

DUFFILL, WATTS & KING
CONSULTING CIVIL & STRUCTURAL ENGINEERS
DUNEDIN & INVERCARGILL N.Z.

File 4609/4
JOB No. 4609/4
Sheet of Sheets