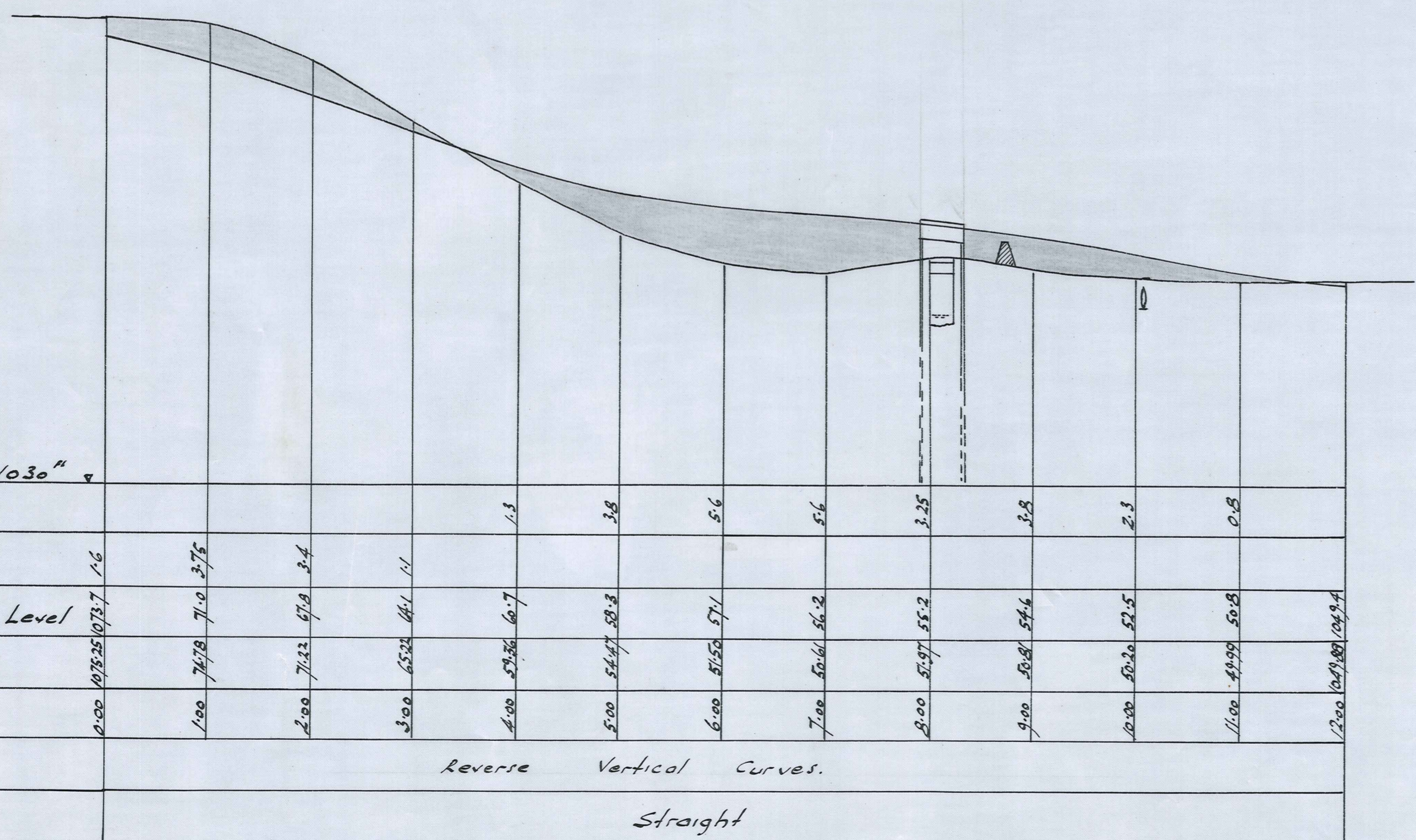
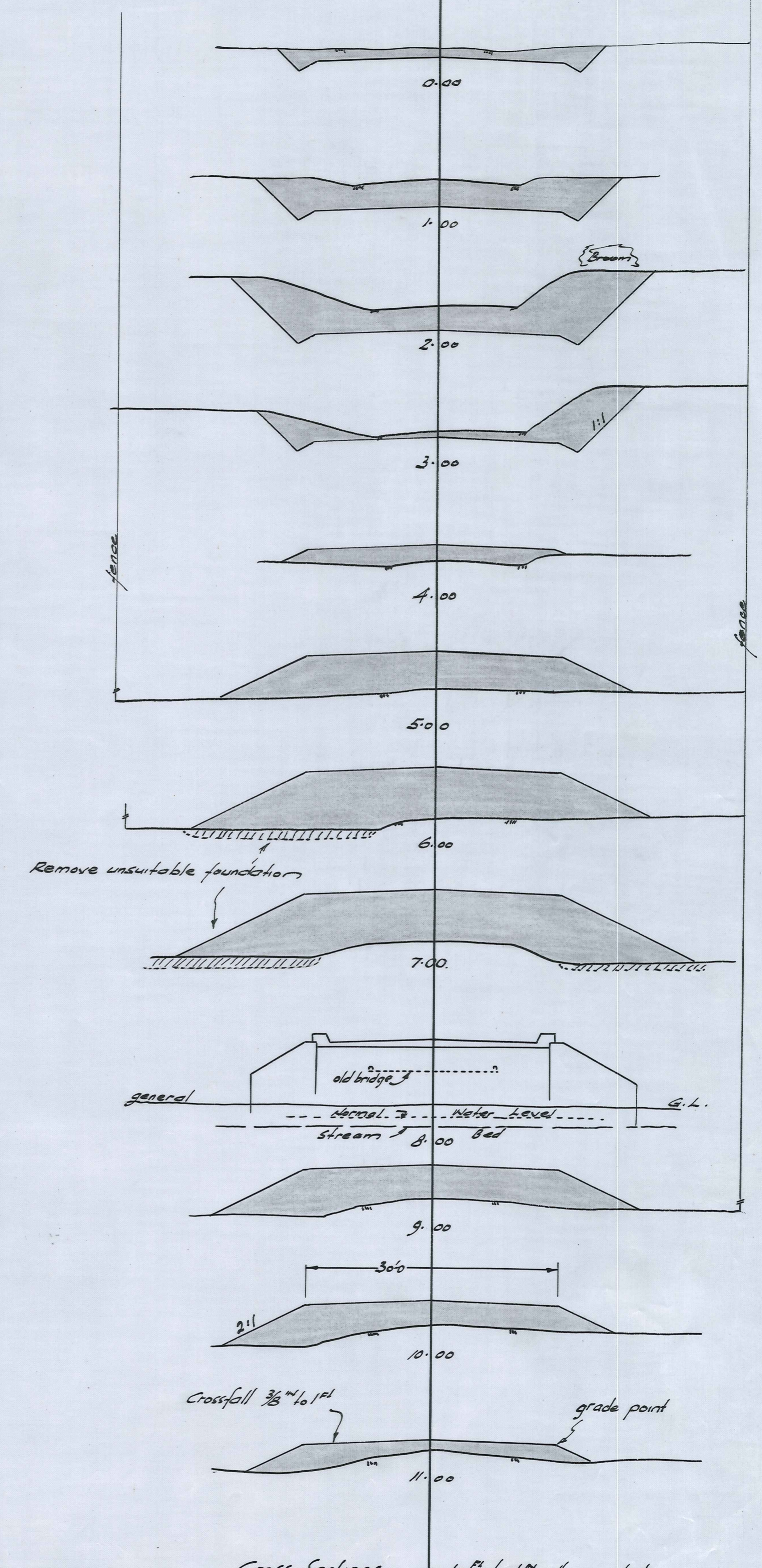


Plan
1ch to 1in



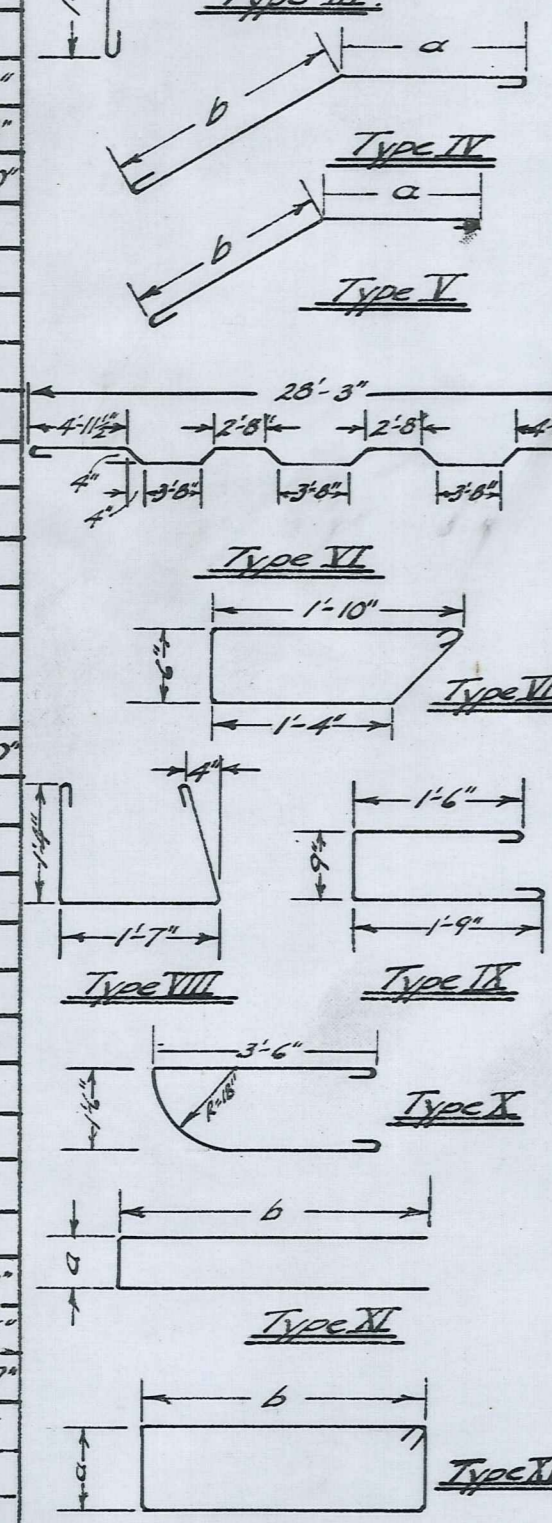
Longitudinal Section of Approaches

Scales: Vert 10" to 1" / Horiz 1ch to 1in

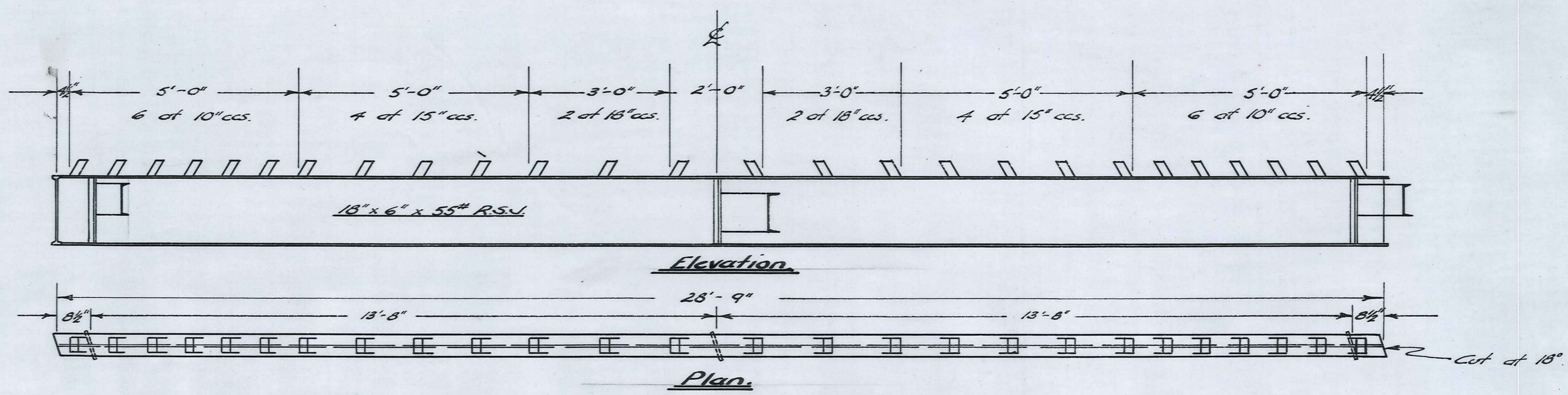


Cross Sections: 10" to 1" Horiz - Vert.

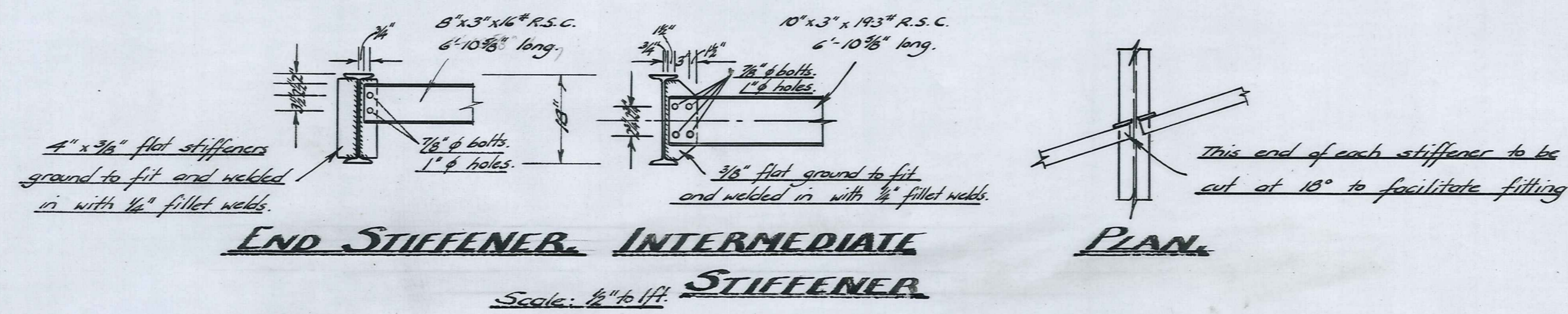
Steel				Schedule		Shape
Rad.	Diam.	Type	No. of	Cut Length	a.	
A ₁	3/8"	I	36	30'-0"	29'-0"	
A ₂	3/8"	II	60	23'-11"		
A ₃	3/8"	III	60	6'-10"	4'-9"	
A ₄	3/8"	IV	4	6'-1"	4'-0"	
A ₅	3/8"	III	4	5'-6"	3'-5"	
A ₆	3/8"	III	4	4'-11"	2'-10"	
A ₇	3/8"	I	4	10'-3"	9'-3"	
A ₈	3/8"	I	16	8'-4"	7'-4"	
A ₉	3/8"	I	2	11'-10"	10'-10"	
A ₁₀	3/8"	I	2	15'-4"	14'-4"	
A ₁₁	3/8"	I	2	18'-9"	17'-9"	
A ₁₂	6/8"		152	4'-6"		
W ₁	3/8"	IV	26	14'-4"	2'-1"	11'-3"
W ₂	3/8"	IV	4	12'-1"	2'-1"	9'-0"
W ₃	3/8"	II	2	10'-1"	2'-1"	7'-0"
W ₄	3/8"	I	4	9'-6"	8'-6"	
W ₅	3/8"	I	2	6'-4"	5'-4"	
W ₆	3/8"	I	4	7'-0"	6'-0"	
W ₇	3/8"	I	4	7'-7"	6'-7"	
W ₈	3/8"	I	4	8'-2"	7'-2"	
W ₉	3/8"	I	4	8'-9"	7'-9"	
W ₁₀	3/8"	I	6	9'-2"	8'-2"	
W ₁₁	3/8"	I	4	9'-7"	8'-7"	
W ₁₂	3/8"	I	8	10'-0"	9'-0"	
W ₁₃	3/8"	I	8	10'-6"	9'-6"	
W ₁₄	3/8"	I	12	10'-11"	9'-11"	
W ₁₅	3/8"	I	32	8'-1"	2'-1"	5'-0"
D ₁	3/8"	III	20	30'-0"		
D ₂	3/8"	I	42	29'-3"	28'-3"	
D ₃	1/2"	I	35	30'-0"	29'-3"	
D ₄	1/2"	VII	58	5'-0"		
K ₁	3/8"	VIII	64	5'-0"		
K ₂	1/2"	IX	64	4'-9"		
K ₃	3/8"	X	8	8'-3"		
H ₁	1/2"	XI	8	8'-5"	5"	4'-0"
H ₂	6/8"	XII	28	4'-6"	6"	1'-6"
H ₃	1/2"	XI	12	7'-9"	3"	3'-9"
H ₄	6/8"	XIII	24	1'-6"	3"	3"



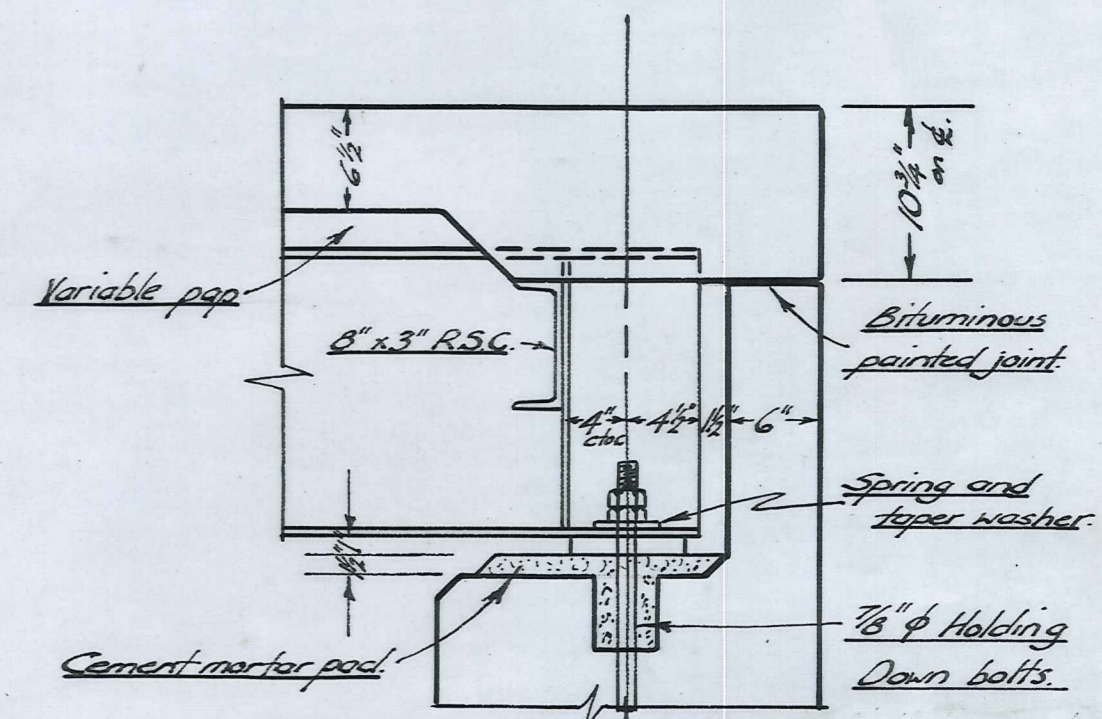
All dimensions subject to variation.



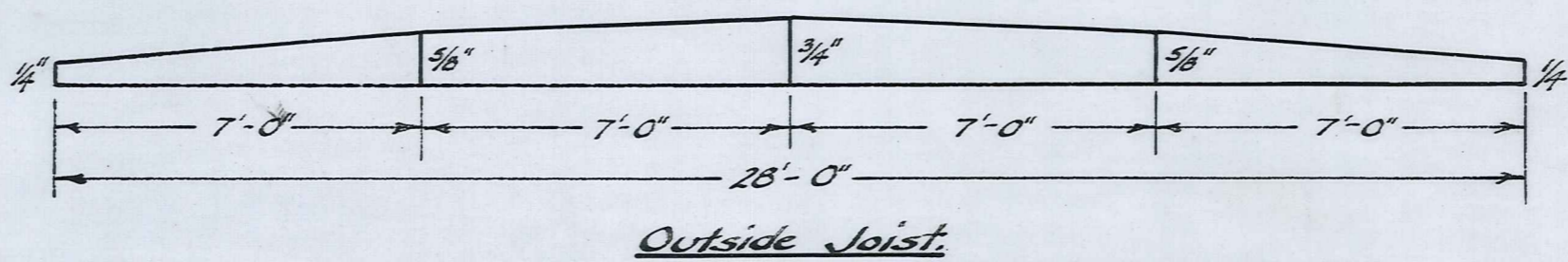
~ JOIST DETAIL ~
Scale: 1/2" = 1 ft.
(of thus.)



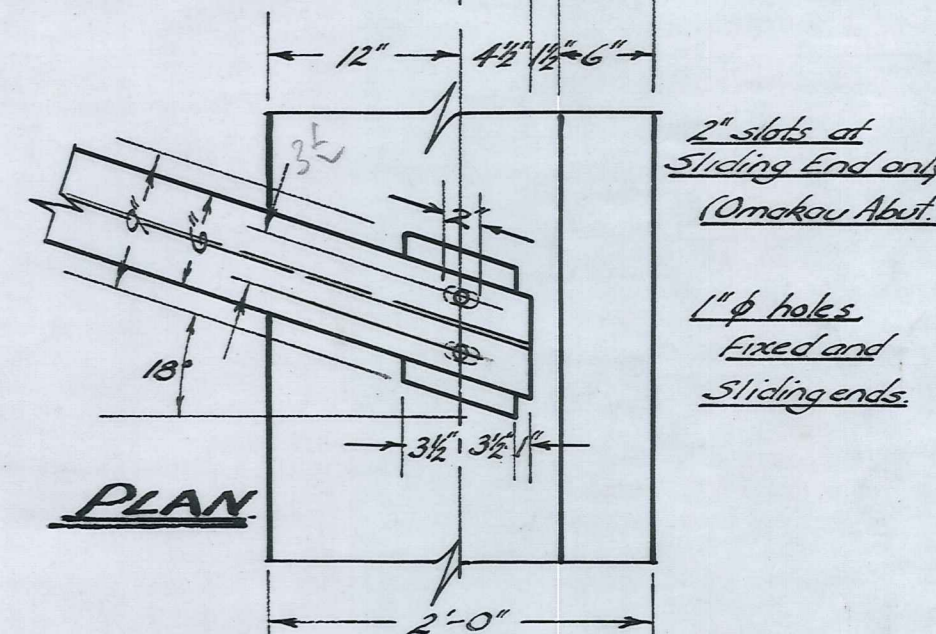
END STIFFENER. INTERMEDIATE STIFFENER.
Scale: 1/2" = 1 ft.



ELEVATION

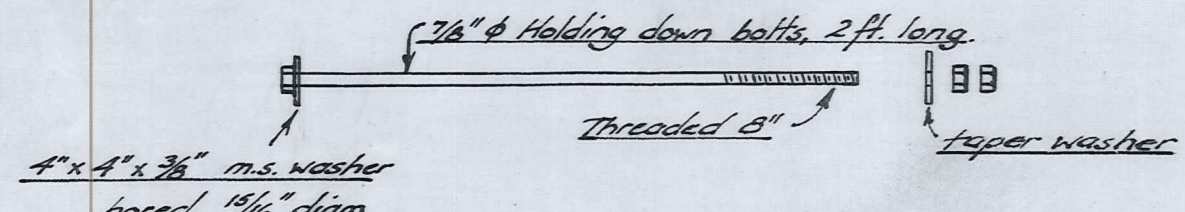


PAP HEIGHT DIAGRAM.
Not to Scale.



PLAN

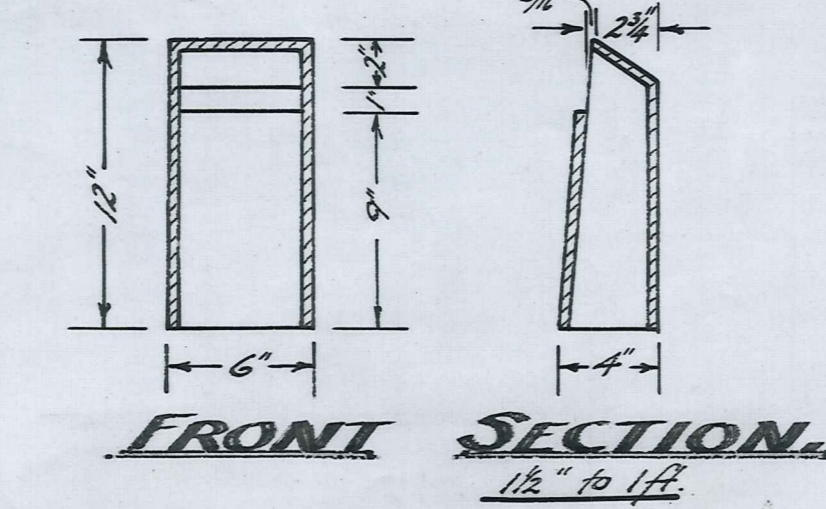
~ BEARING PLATE DETAIL ~
Scale: 1 inch = 1 ft.



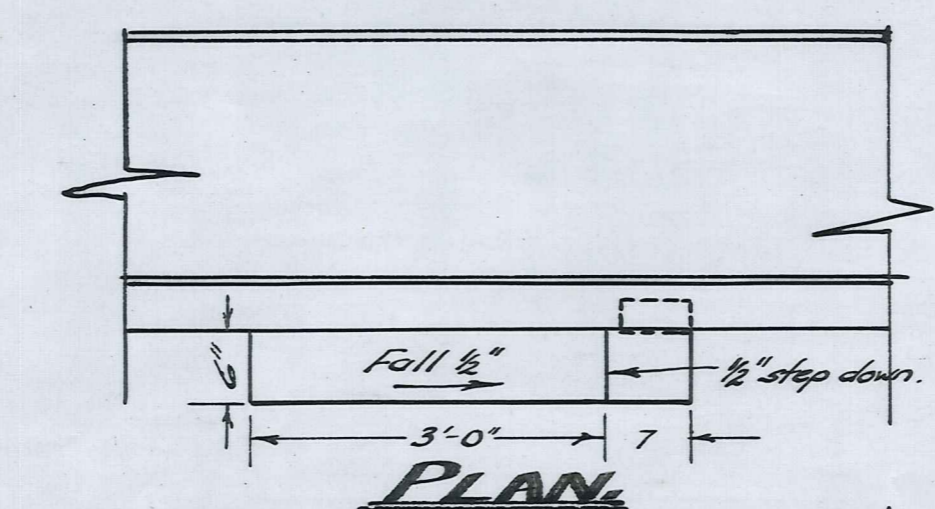
HOLDING DOWN BOLTS.
(16 thus.)

~ HOOK & LAR ~

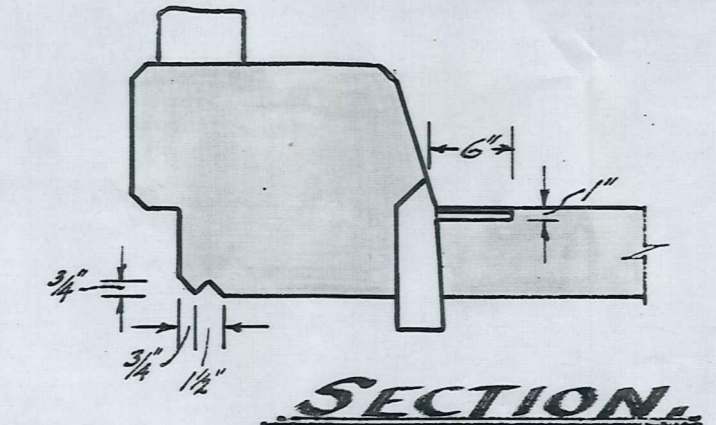
~ CAST IRON DRAIN ~



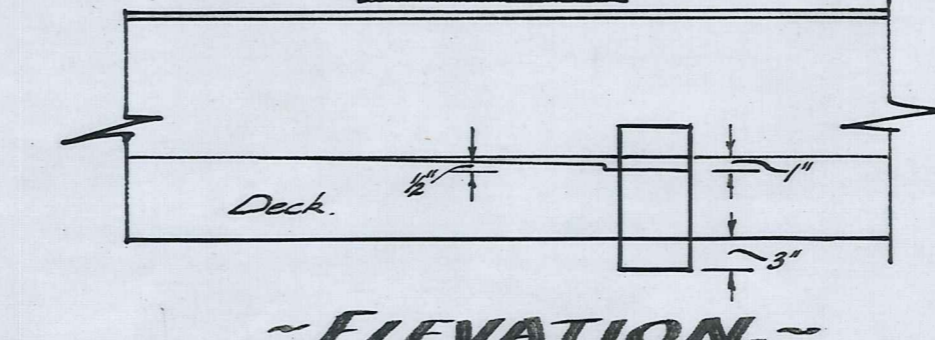
FRONT SECTION.
1 1/2" = 1 ft.



PLAN



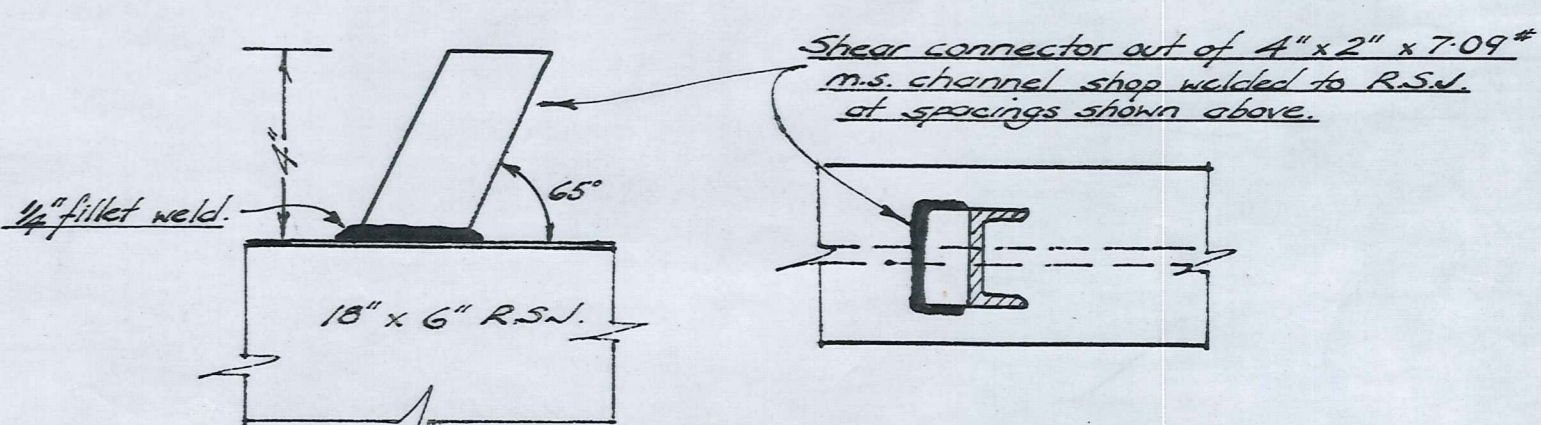
SECTION.



ELEVATION.

~ DRAIN PIPE DETAIL ~
P.W.D. S.S. Scale: 3/4 inch = 1 ft.
2 thus.

~ CHAMFERS & FILLETS ~
Not to Scale.



SHEAR CONNECTOR DETAIL.
Not to Scale.