

- NOTES
1. Posts at 1.905m centres.
  2. steel posts fabricated & then hot dip galvanized.
  3. Timber posts to be treated with c3 preservatives.
  4. All bolts, washers, & nuts to be galvanized.
  5. Guardrail to be Flexrail 3810-12 (highway type) or similar

A Guardrail revised		AUG '88 D.B.	
No.	Revisions	Date	App'd
Designed	DON HOLLIDAY	Date JULY '88	Print Date
Drawn	M. J. CASIDY	JULY '88	
Checked			
Approved	<i>[Signature]</i>	7/88	
File	4043/2/28	L.B.	F.B.

**DUFFILL WATTS & KING LTD**  
Consulting Civil & Structural Engineers  
Dunedin Invercargill Alexandra Queenstown

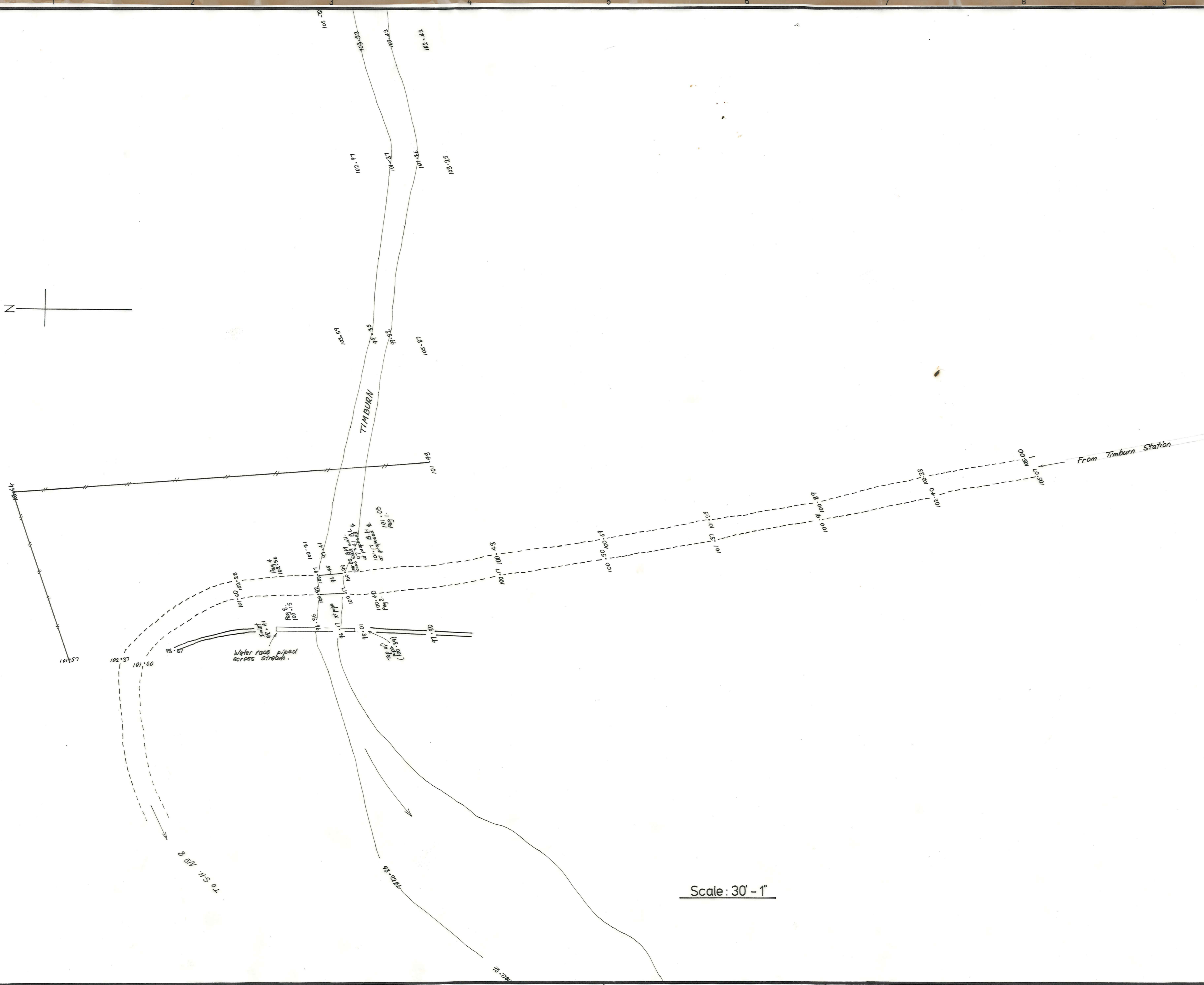
Client  
**VINCENT COUNTY COUNCIL**

Project  
**TIMBURN BRIDGE**

Job No.	13575	Sheet No.	1	Revision	A
		of	1	shts	

ORIGINAL SIZE mm





Scale: 30' - 1"

VINCENT COUNTY COUNCIL

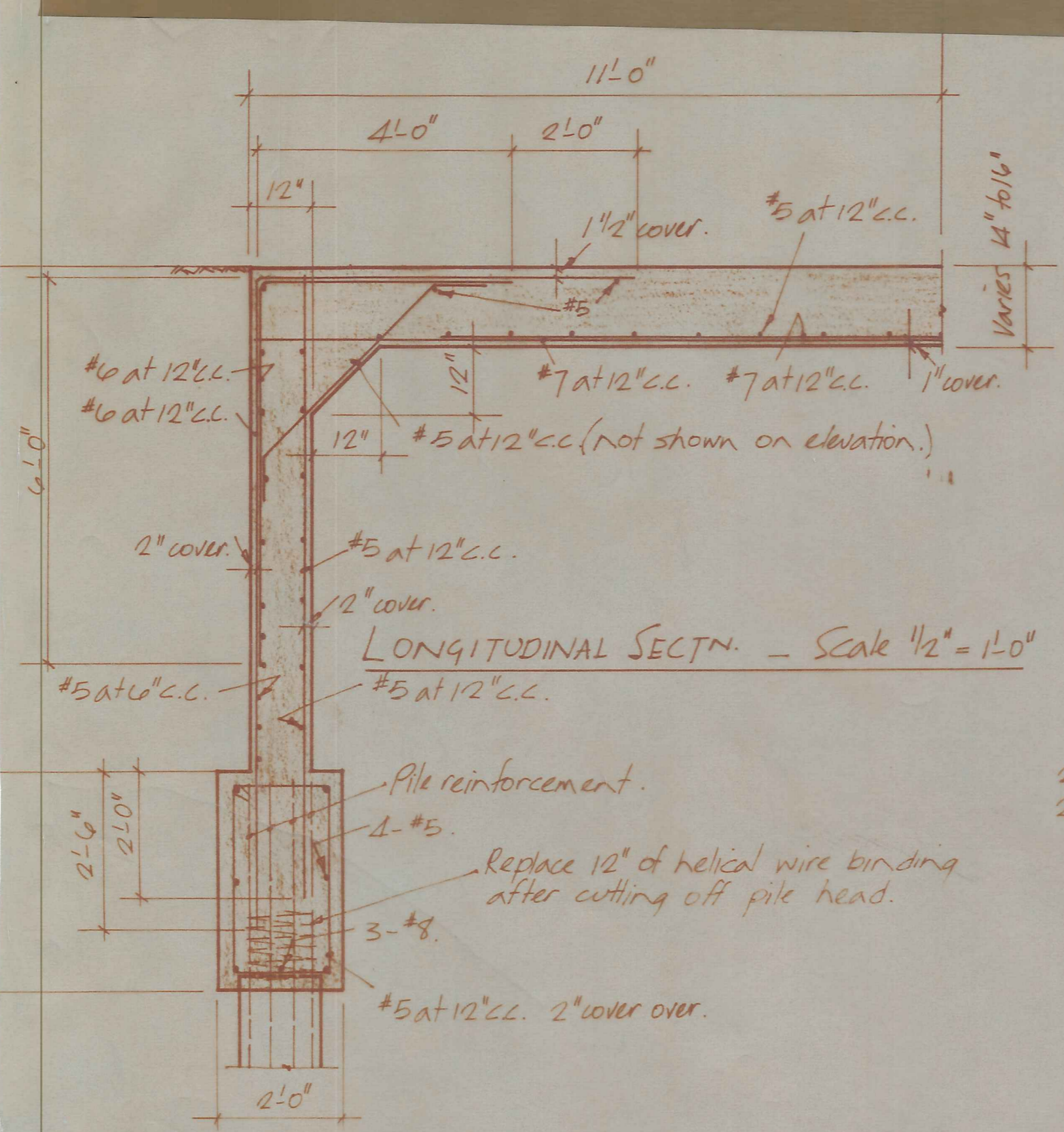
TIMBURN BRIDGE

AMENDMENTS					NAME	DATE
No.	By	Date	Description	Apprd.		
					M. Coleman	1971.

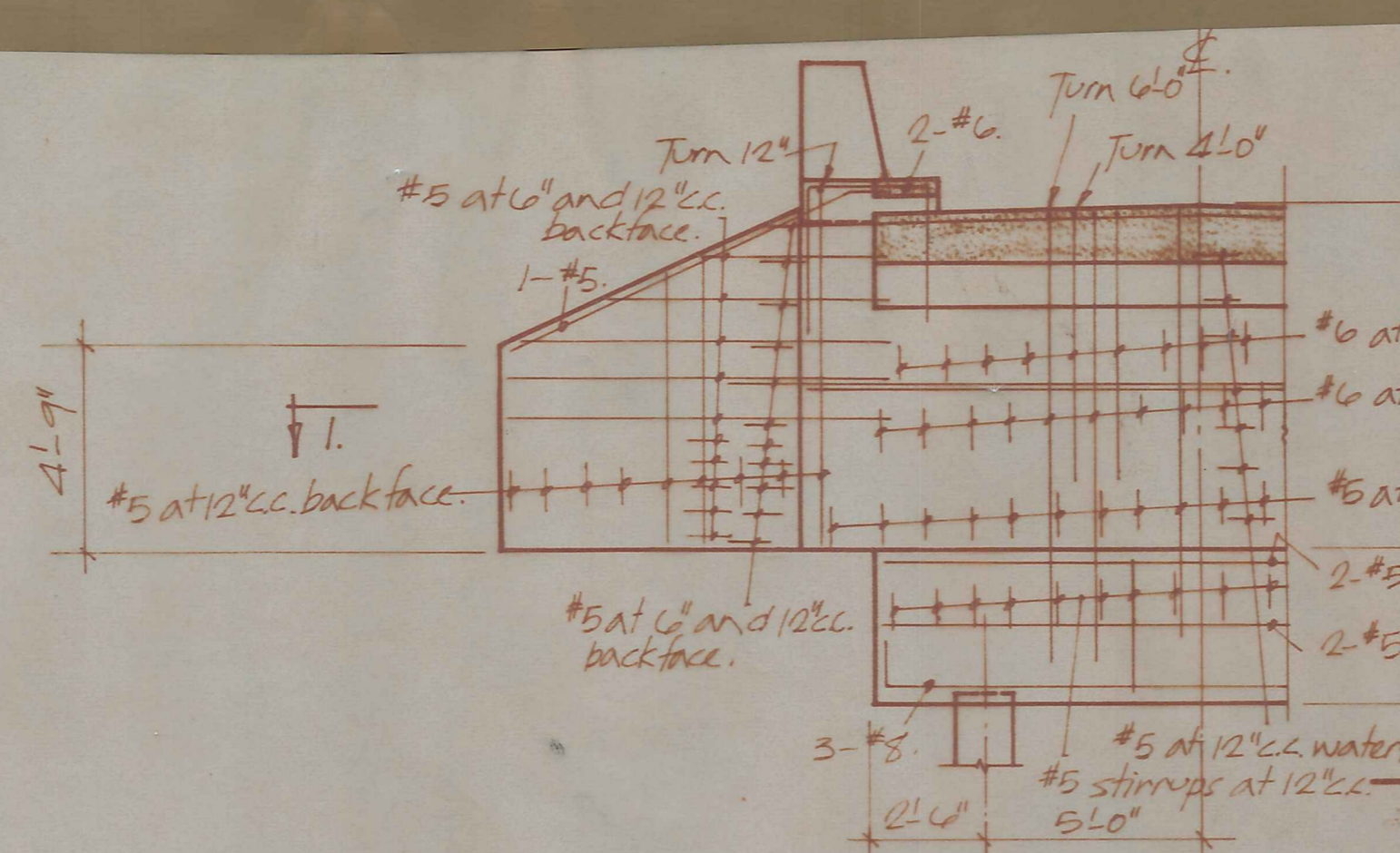
**DUFFILL, WATTS & KING**  
CONSULTING CIVIL & STRUCTURAL ENGINEERS  
DUNEDIN & INVERCARGILL N.Z.

File  
L. Bk.  
F. Bk.  
JOB No.  
**7075**  
Sheet 1 of 2 Sheets

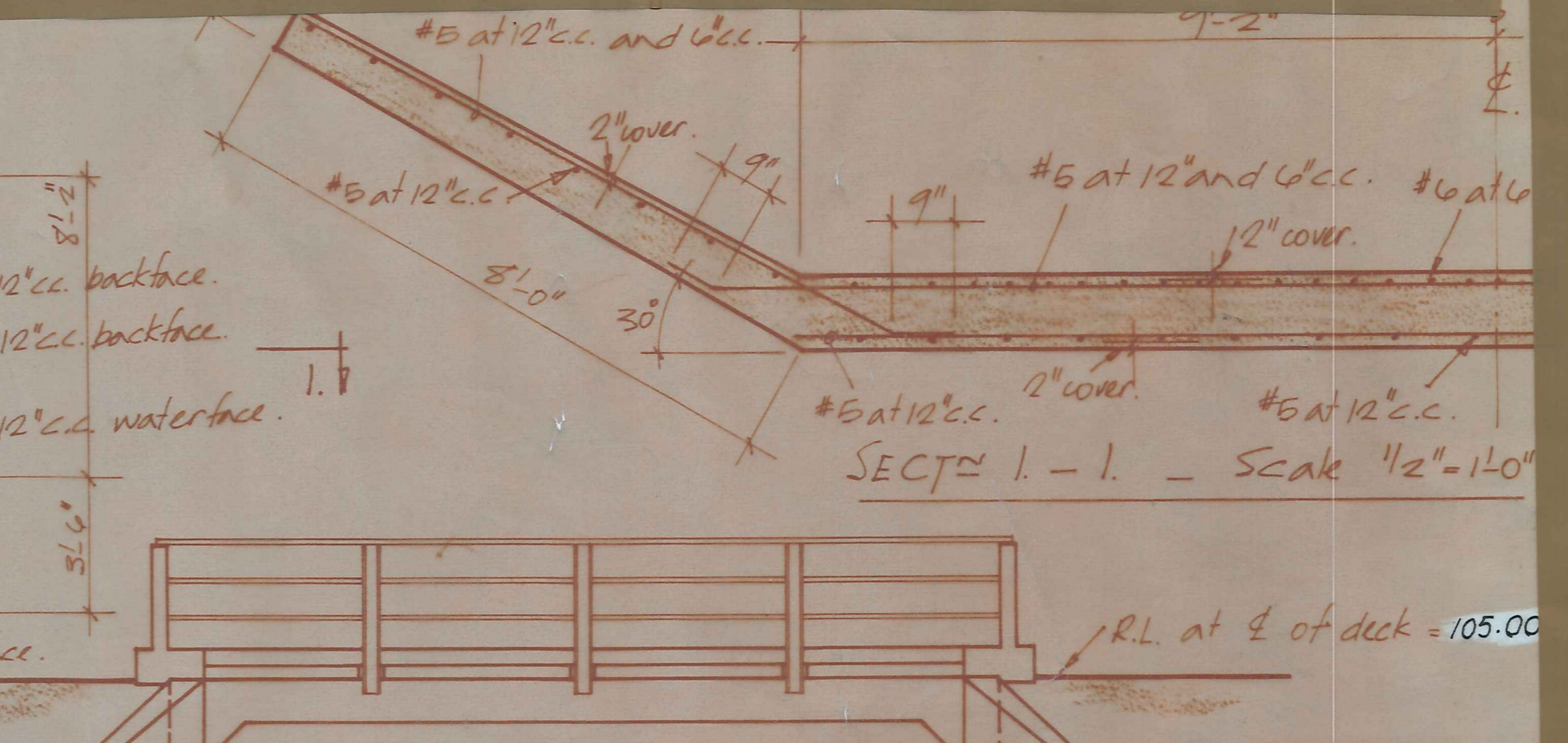




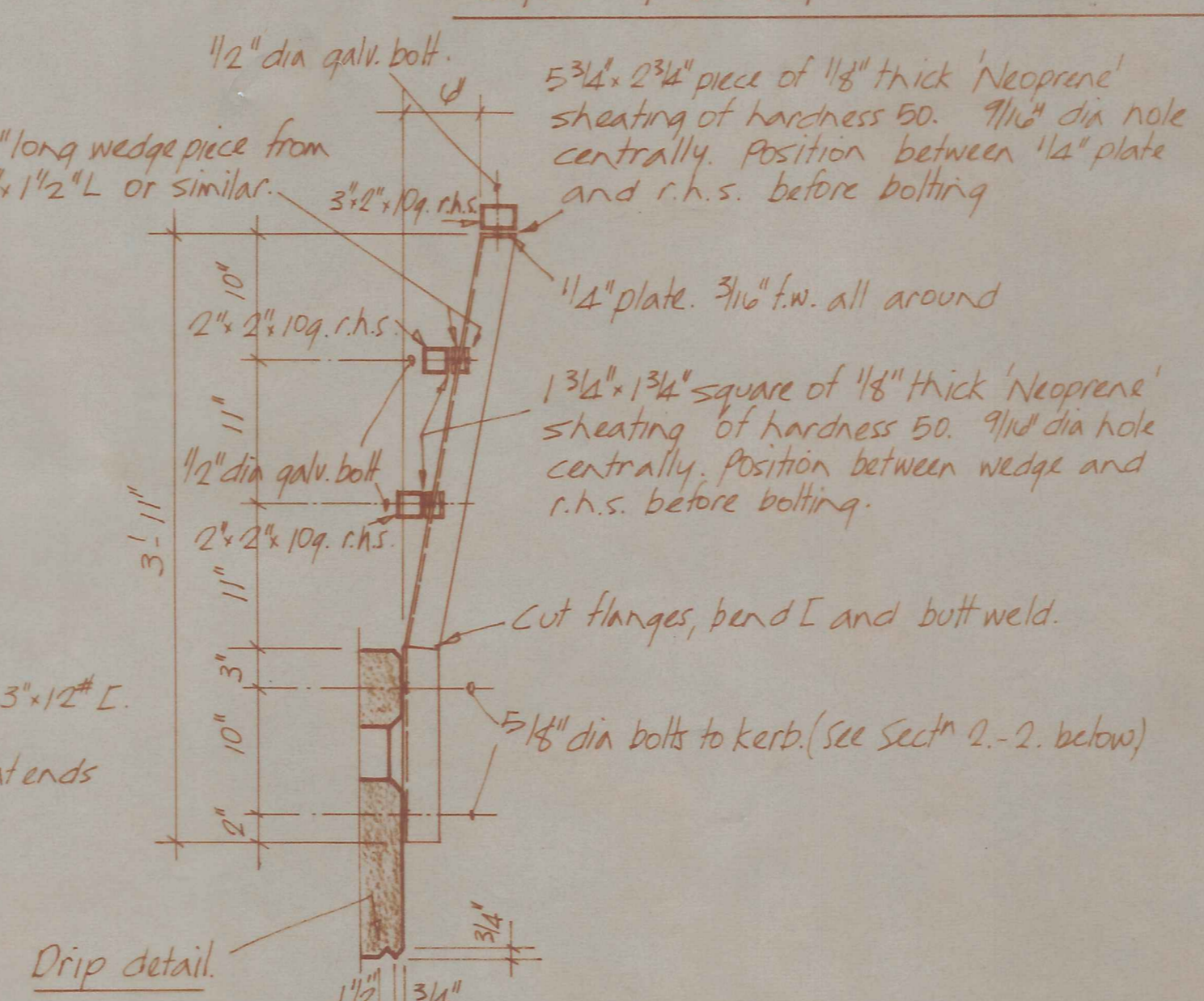
LONGITUDINAL SECTN. - Scale 1/2" = 1'-0"



ABUTMENT ELEVATION. - Scale 1/2" = 1'-0"

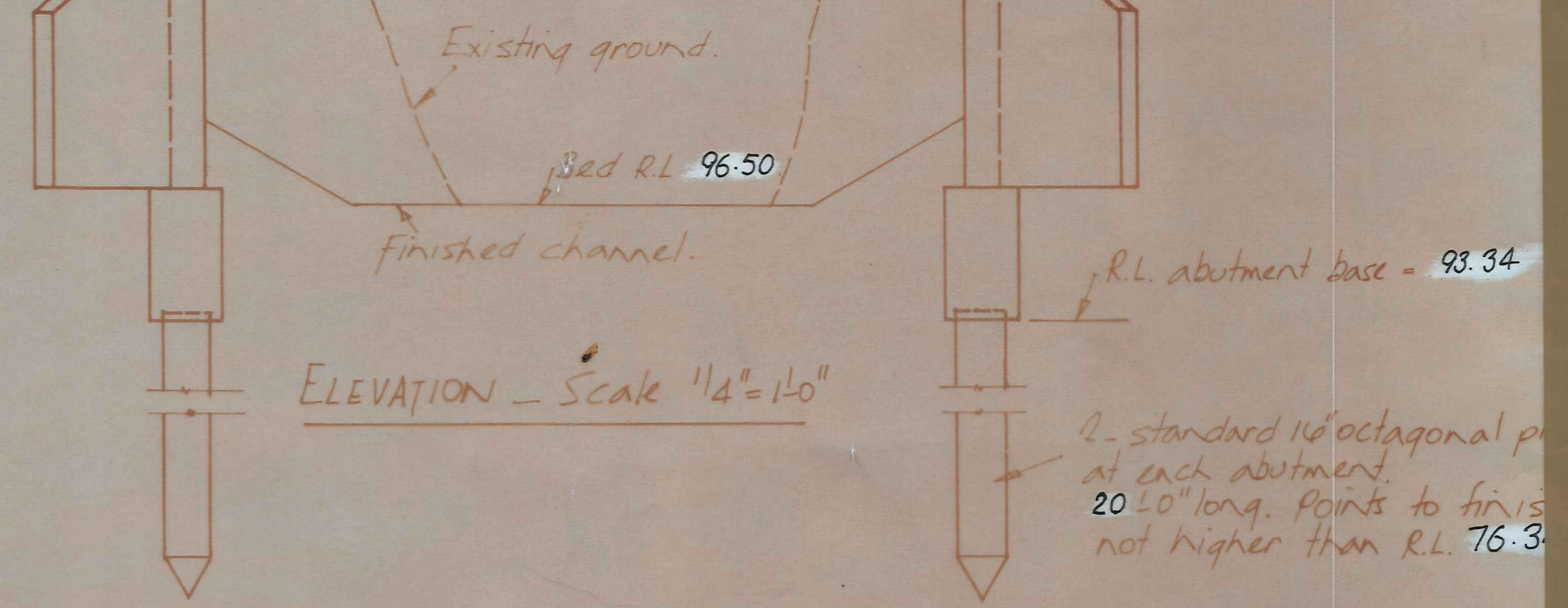


SECTN. 1-1 - Scale 1/2" = 1'-0"

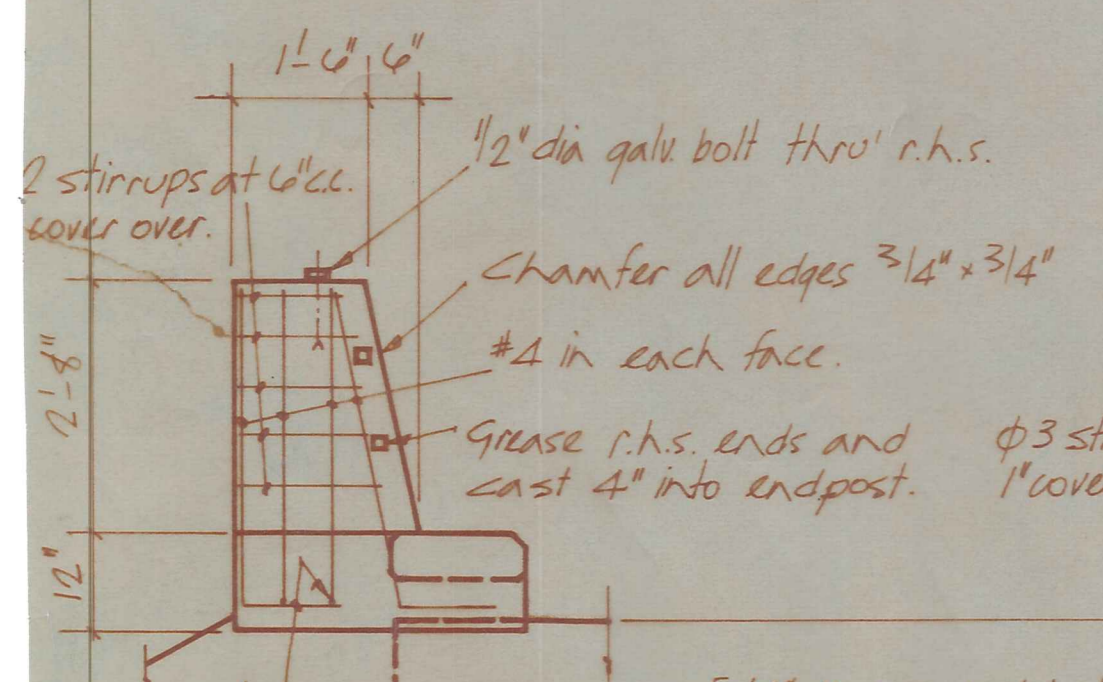


6" x 3" x 12" E HANDRAIL POST. - 6 OFF

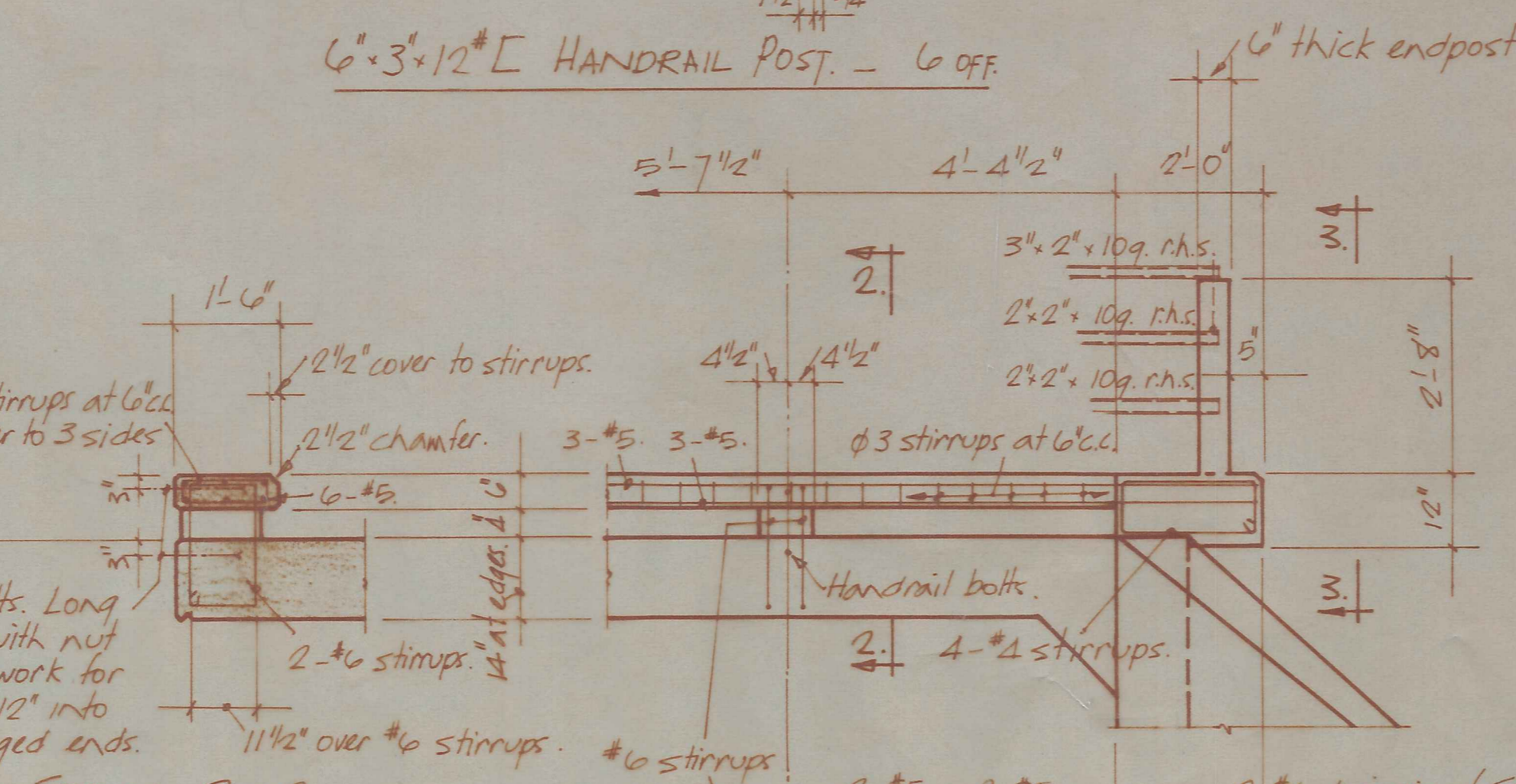
Note. - All bolts to be on  $\pm$  of 6" x 3" x 12" E. Drill rails on site, and All r.h.s. rails to be sealed at ends with 1/8" thick plate.



ELEVATION - Scale 1/4" = 1'-0"

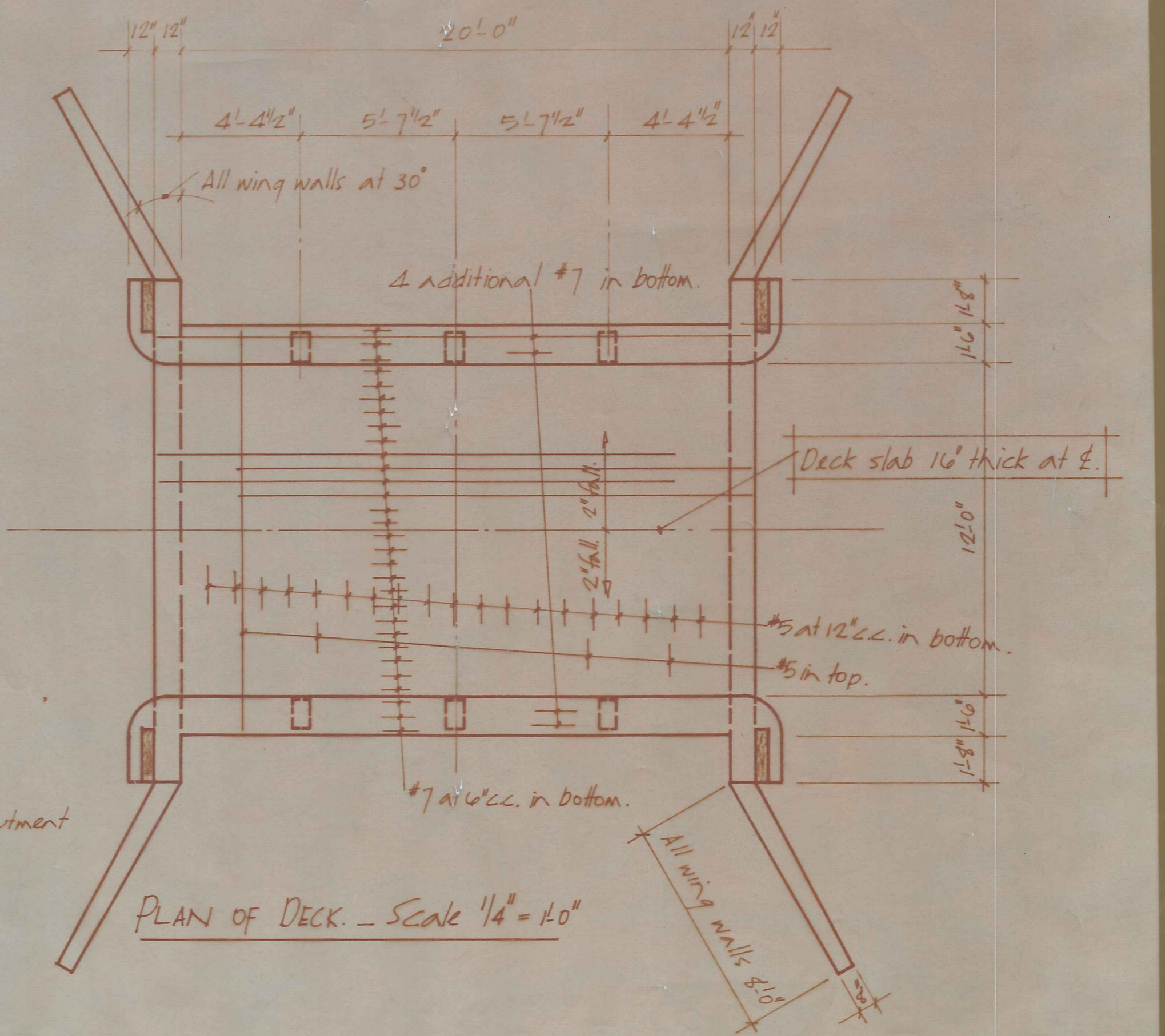


SECTN. 3-3. (Endpost.)



SECTN. 2-2.

KERB DETAILS - Scale 1/2" = 1'-0"



PLAN OF DECK. - Scale 1/4" = 1'-0"

AMENDMENTS				NAME	DATE
No.	By	Date	Description	Apprd	Traced