

TIROITI

Estimated Flood Level 100.30' Due to Construction

TOTAL WATERWAY AREA = 2400 Sq. ft

RL 100.00

SECTION AT A-A

Scale 1" to 1/2 chain

ELEVATION
Scale 1/10" to 1'-0"

TOTAL WATERWAY AREA 2080 Sq. ft

Estimated Flood Level R.L. 99.25 Due to Construction

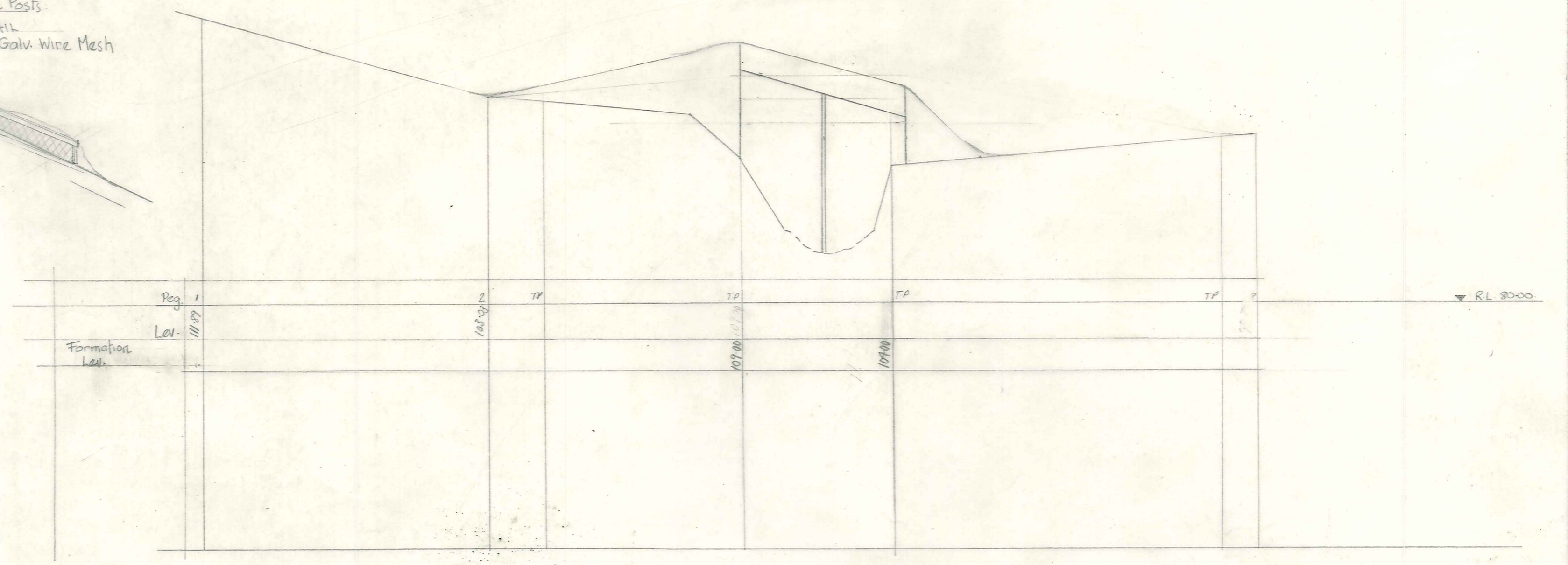
RL 100.00

SECTION AT PROPOSED BRIDGE

Scale 1" to 1/2 chain

BRIDGE APPROACHES

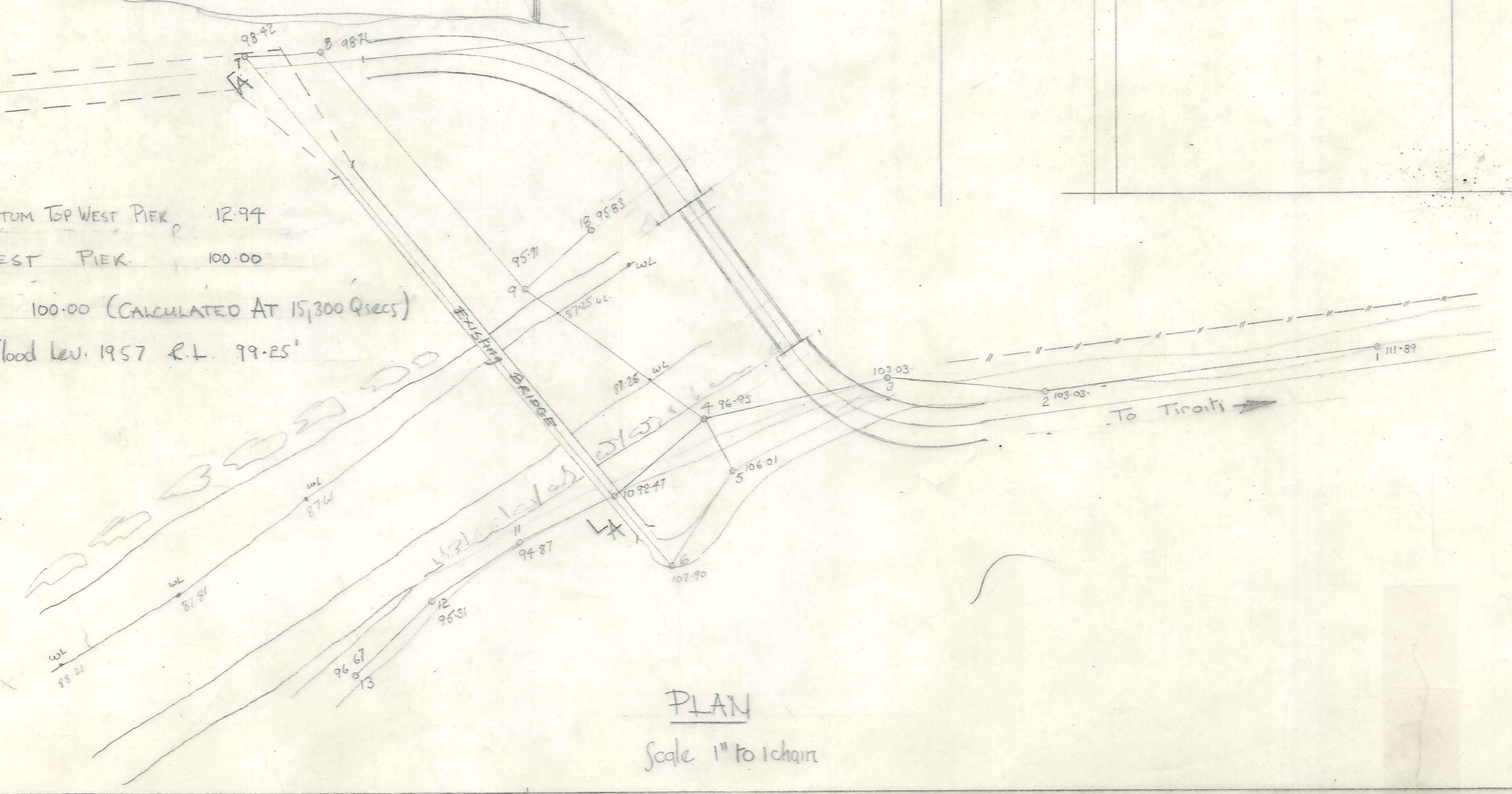
4x3 Concrete Posts
4x2 Top Rail
No 8 gauge Galv. Wire Mesh



LONGITUDINAL SECTION

Scale 1/10" to 1" Vertical
1" to 1 chain horizontal

CATCHMENT BOARD DATUM TOP WEST PEAK 12.94
DATUM TOP WEST PEAK 100.00
1957 FLOOD LEV. 100.00 (CALCULATED AT 15,300 Cusecs)
MAX Observed flood lev. 1957 R.L. 99.25'



PLAN
Scale 1" to 1 chain

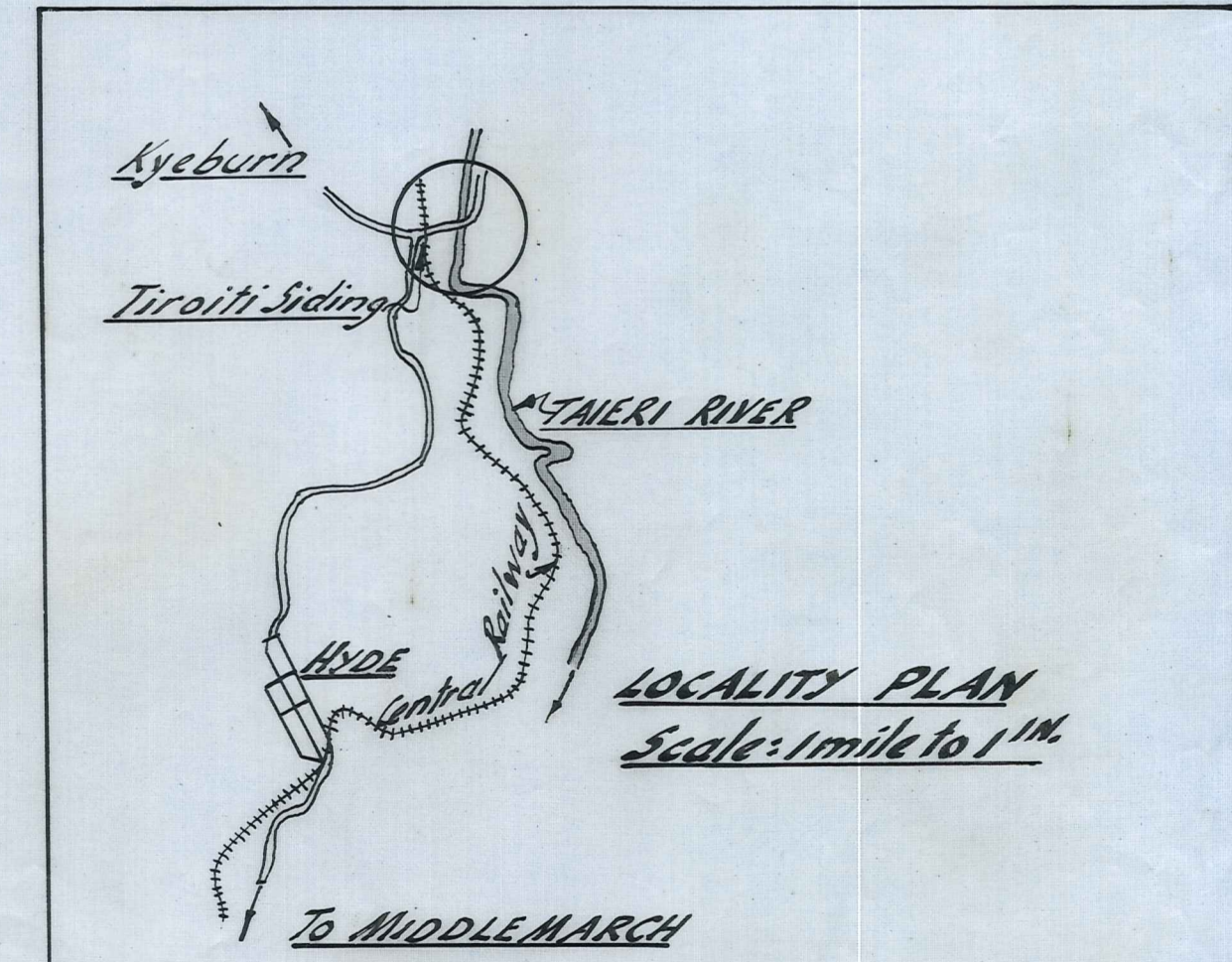
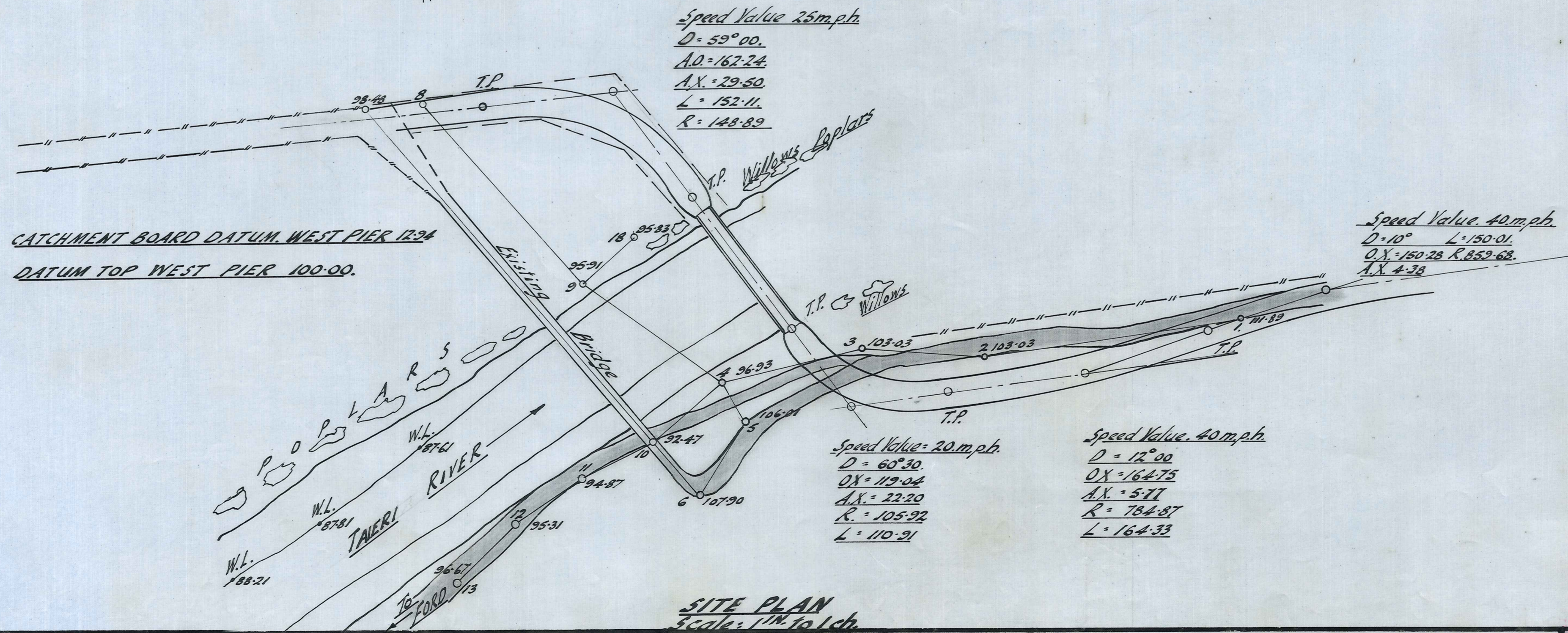
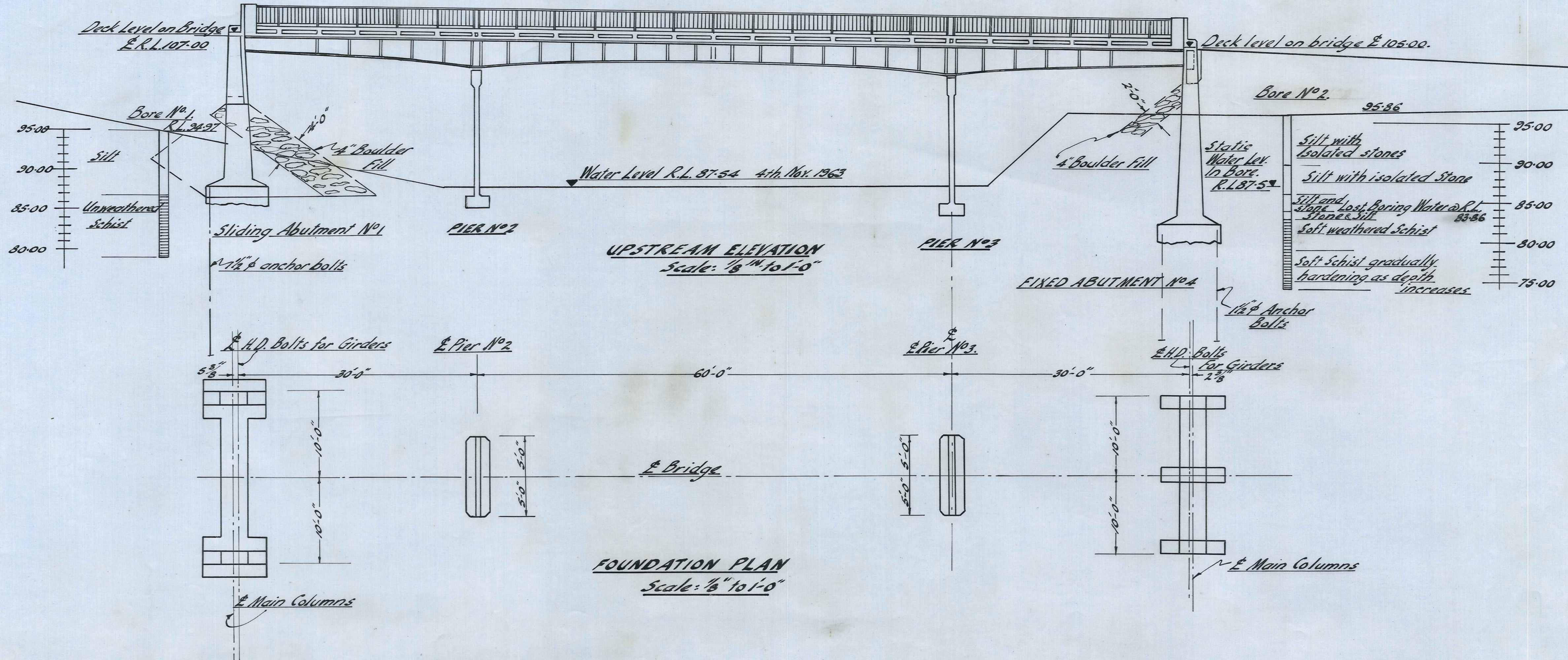
MANIOTOTO COUNTY COUNCIL

TIROITI BRIDGE

DUFFILL, WATTS & KING		NAME	DATE	JOB NO.
CONSULTING CIVIL & STRUCTURAL ENGINEERS		AL Jindall	May 1953	4033/1
DUNEDIN and INVERCARGILL		AL Jindall	Sept 53	
SURVEYED BY	CHECKED	APPROVED	F.B.K.	FILE NO. 6/75

Approach fencing
not shown

Approach fencing
not shown



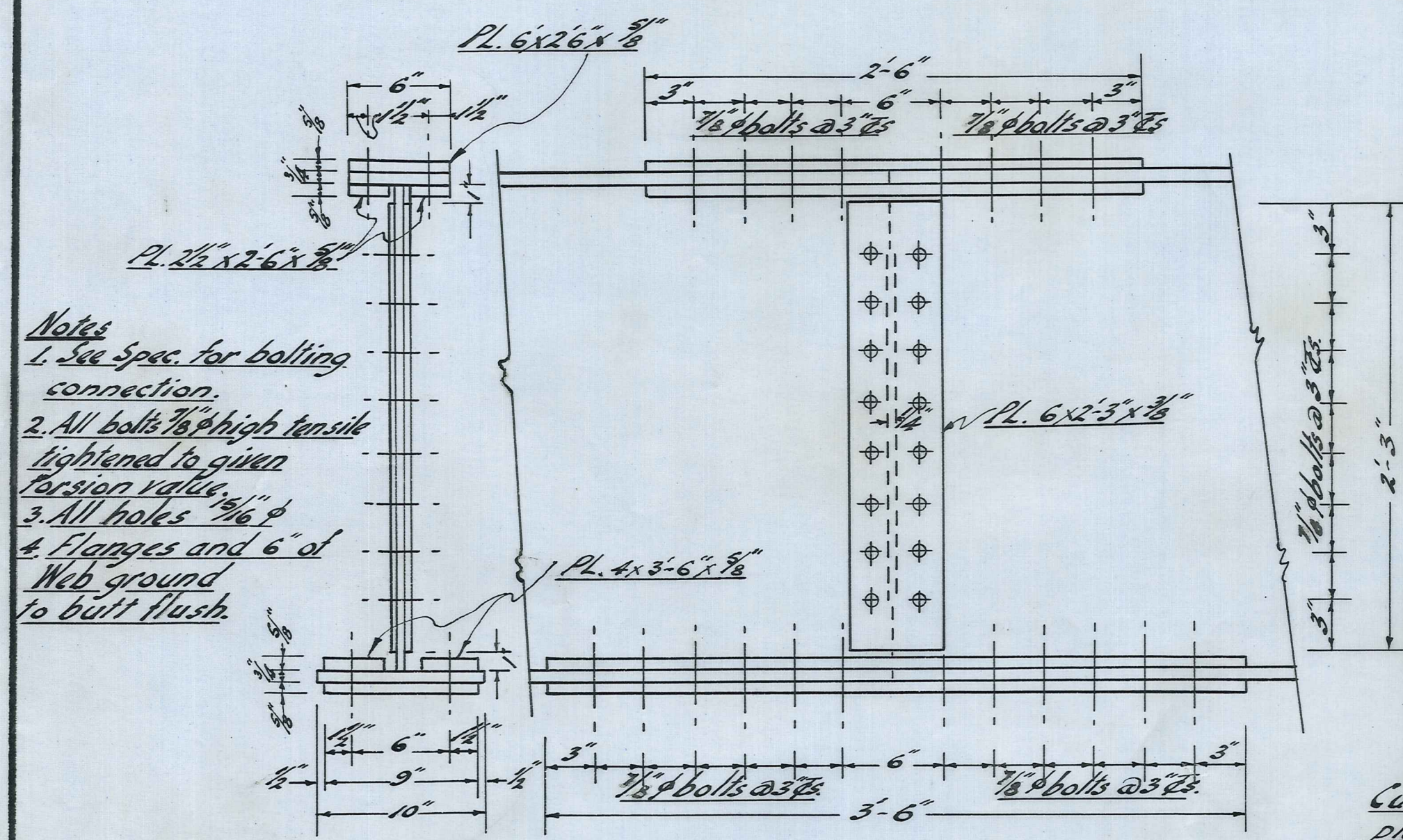
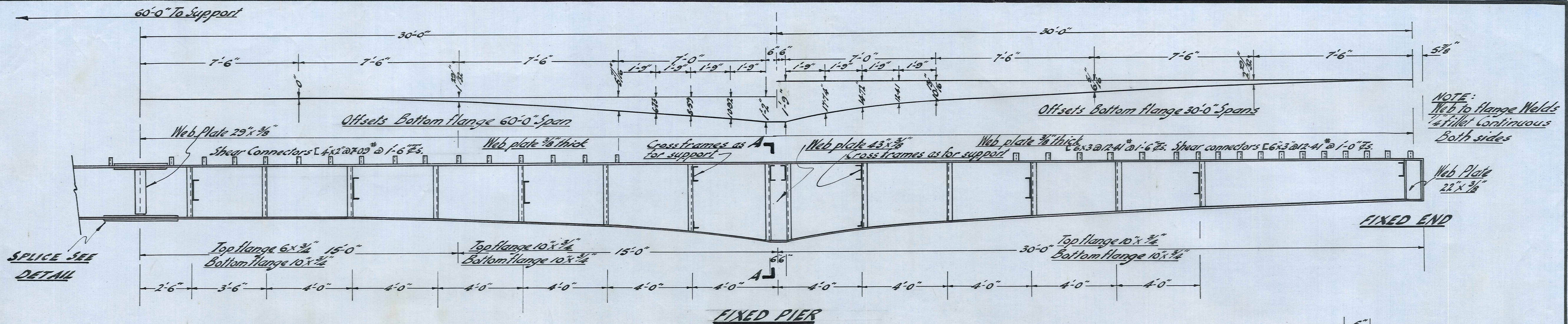
MANIOTOTO COUNTY COUNCIL

TIROITI BRIDGE

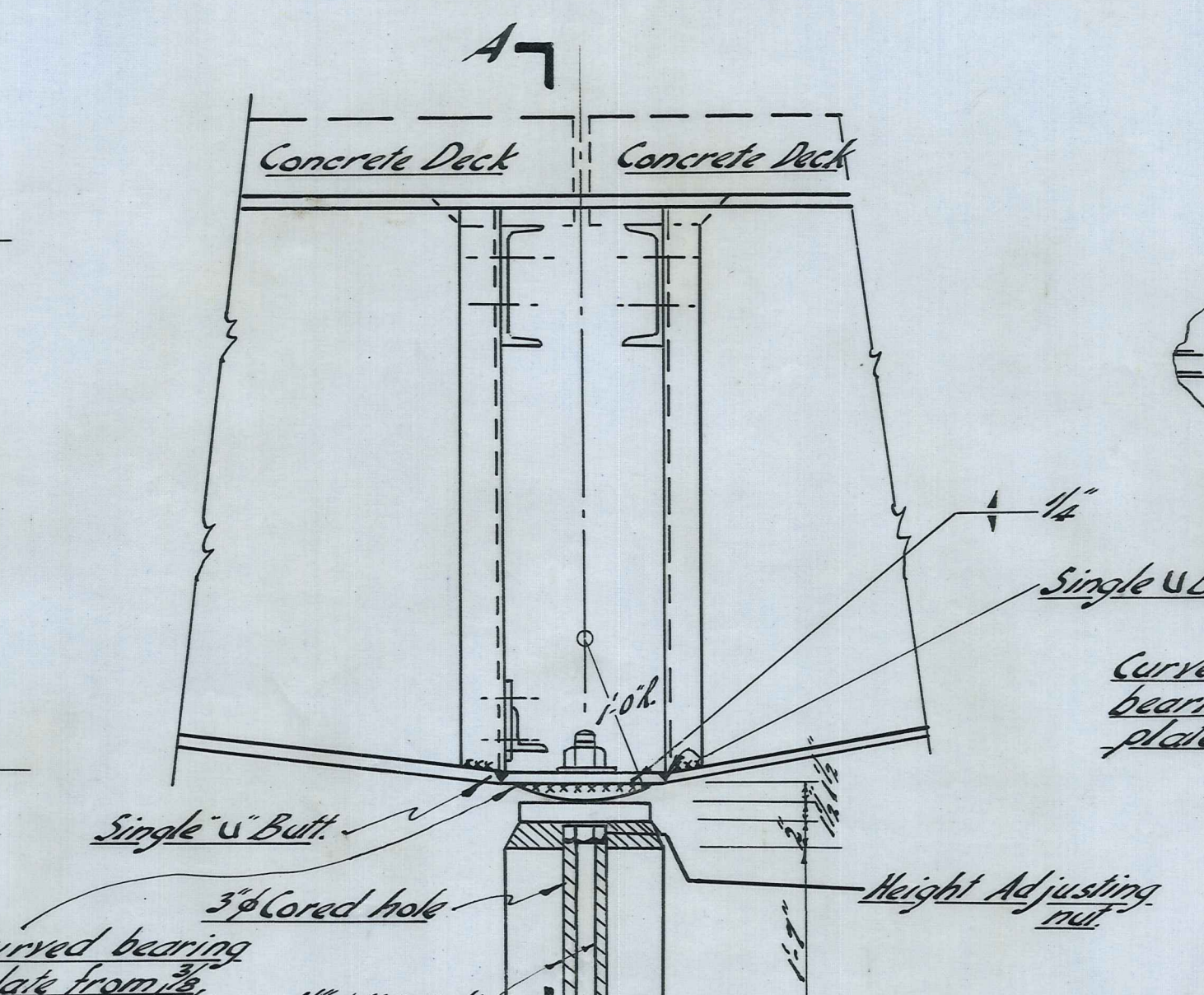
DUFFILL, WATTS & KING
CONSULTING CIVIL & STRUCTURAL ENGINEERS
DUNEDIN and INVERCARGILL

NAME	DATE
A.E. Tyndall	Nov 1963
CHECKED	
TRACED	
APPROVED	

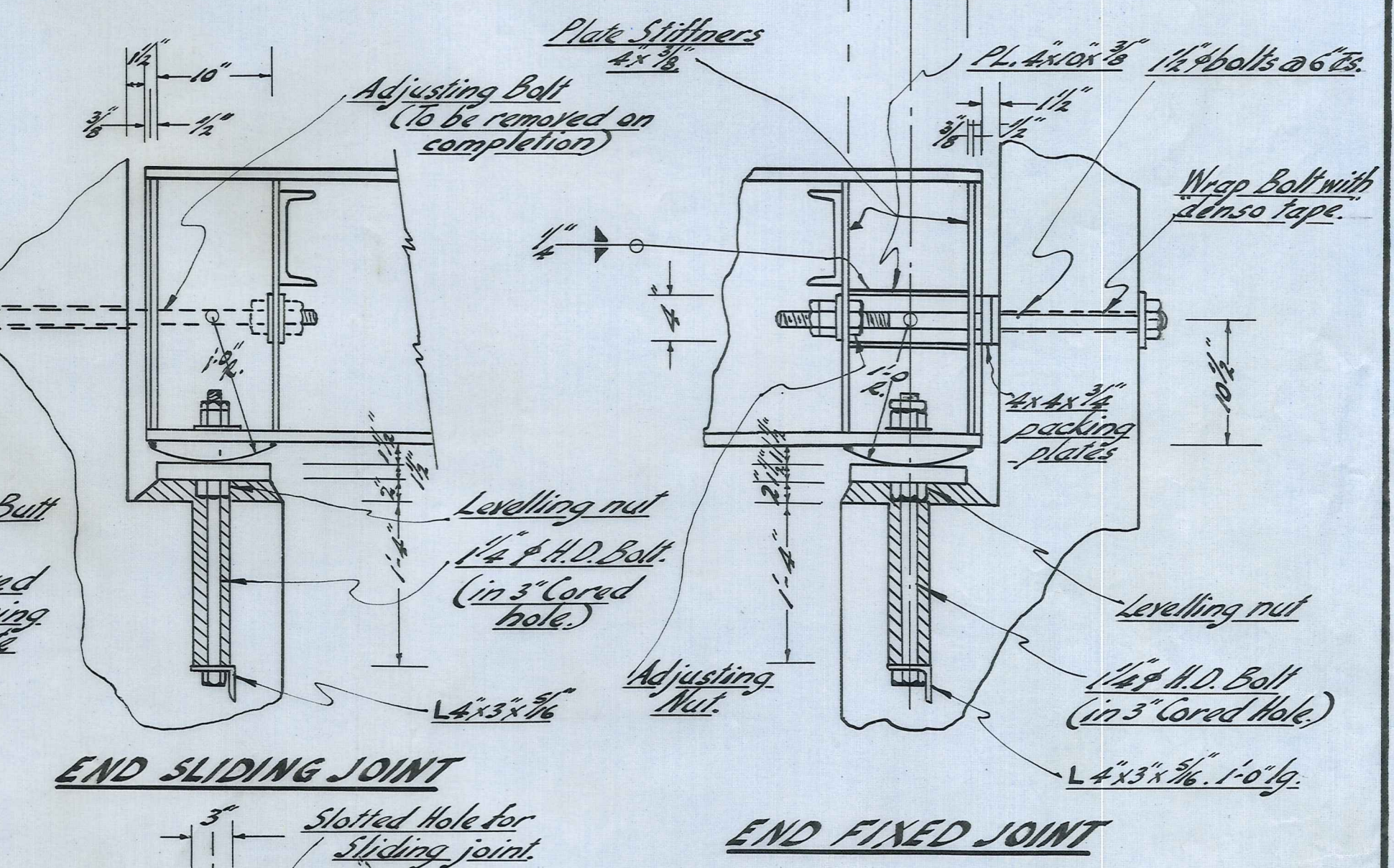
JOB No.
4033/1A
F.B.K. 176 FILE No. 6/25



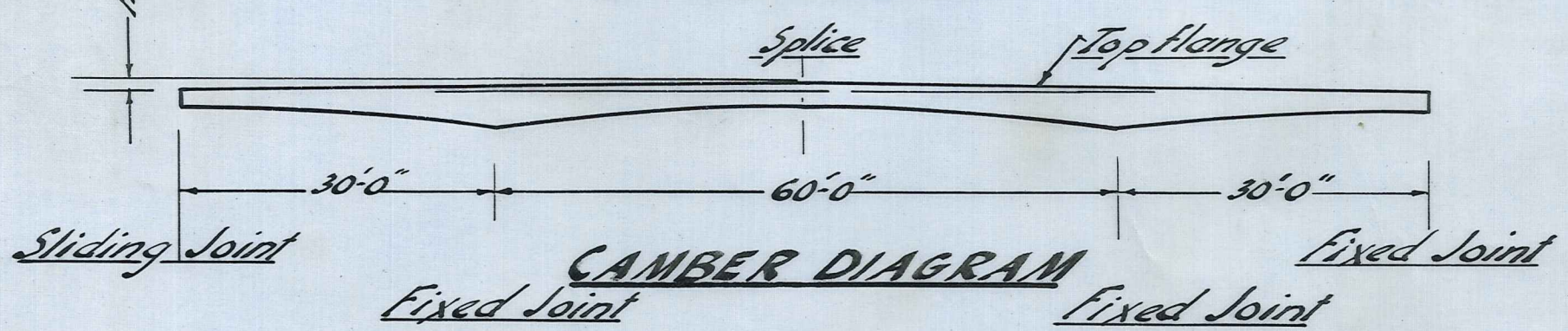
SPLICE DETAILS



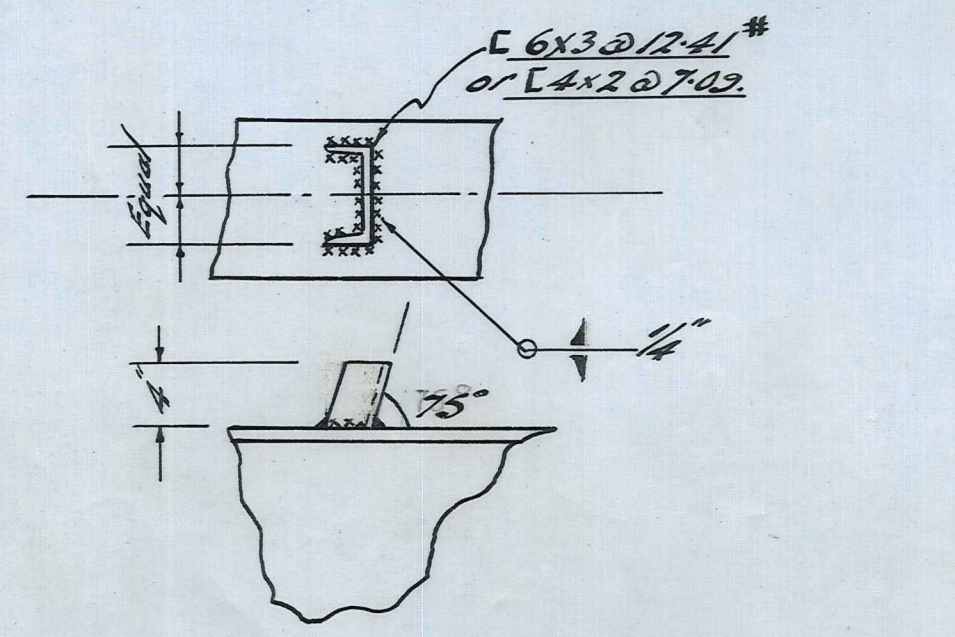
FIXED JOINT PIERS



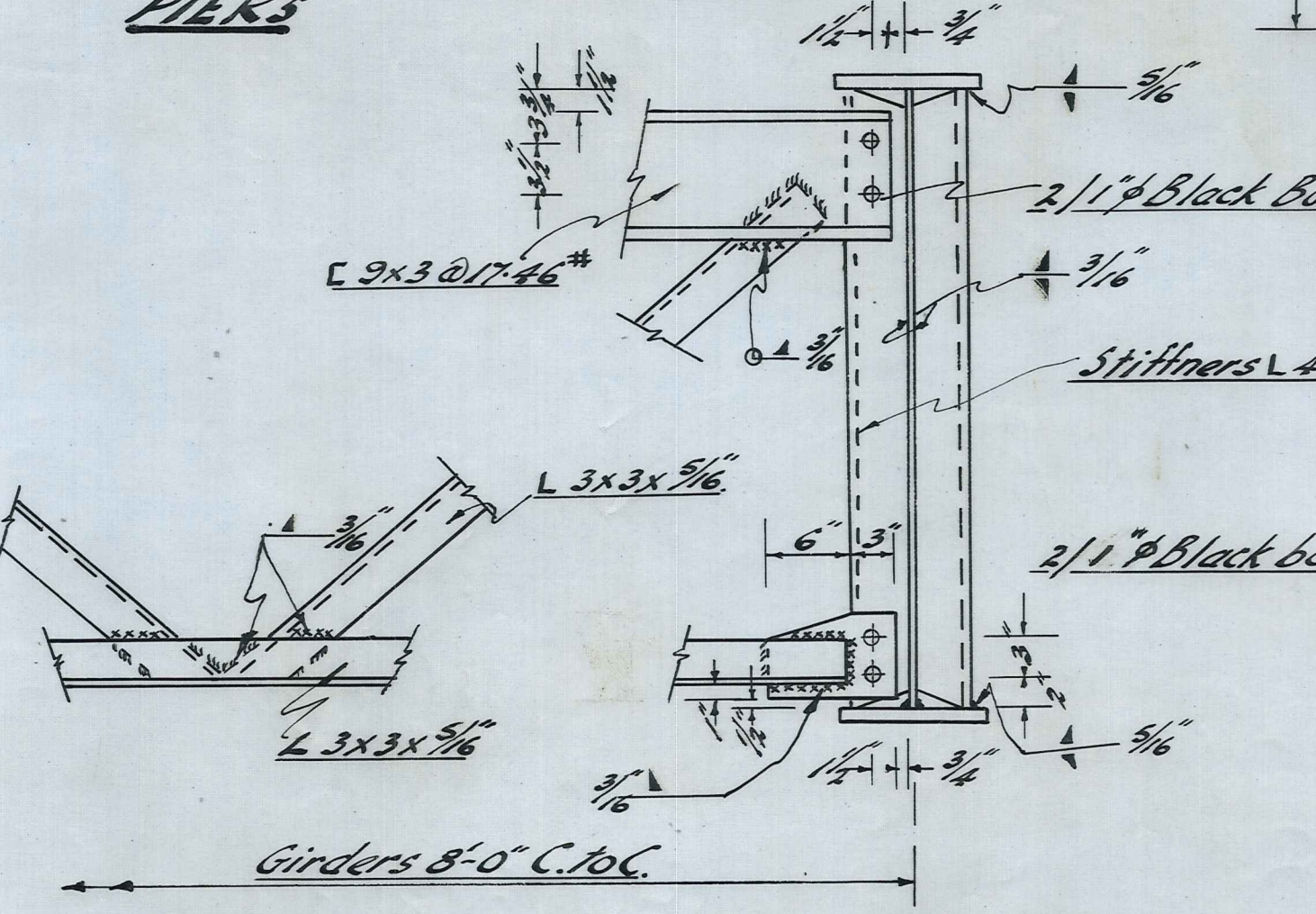
PLAN SLIDING & FIXED JOINTS AT PIERS & ENDS



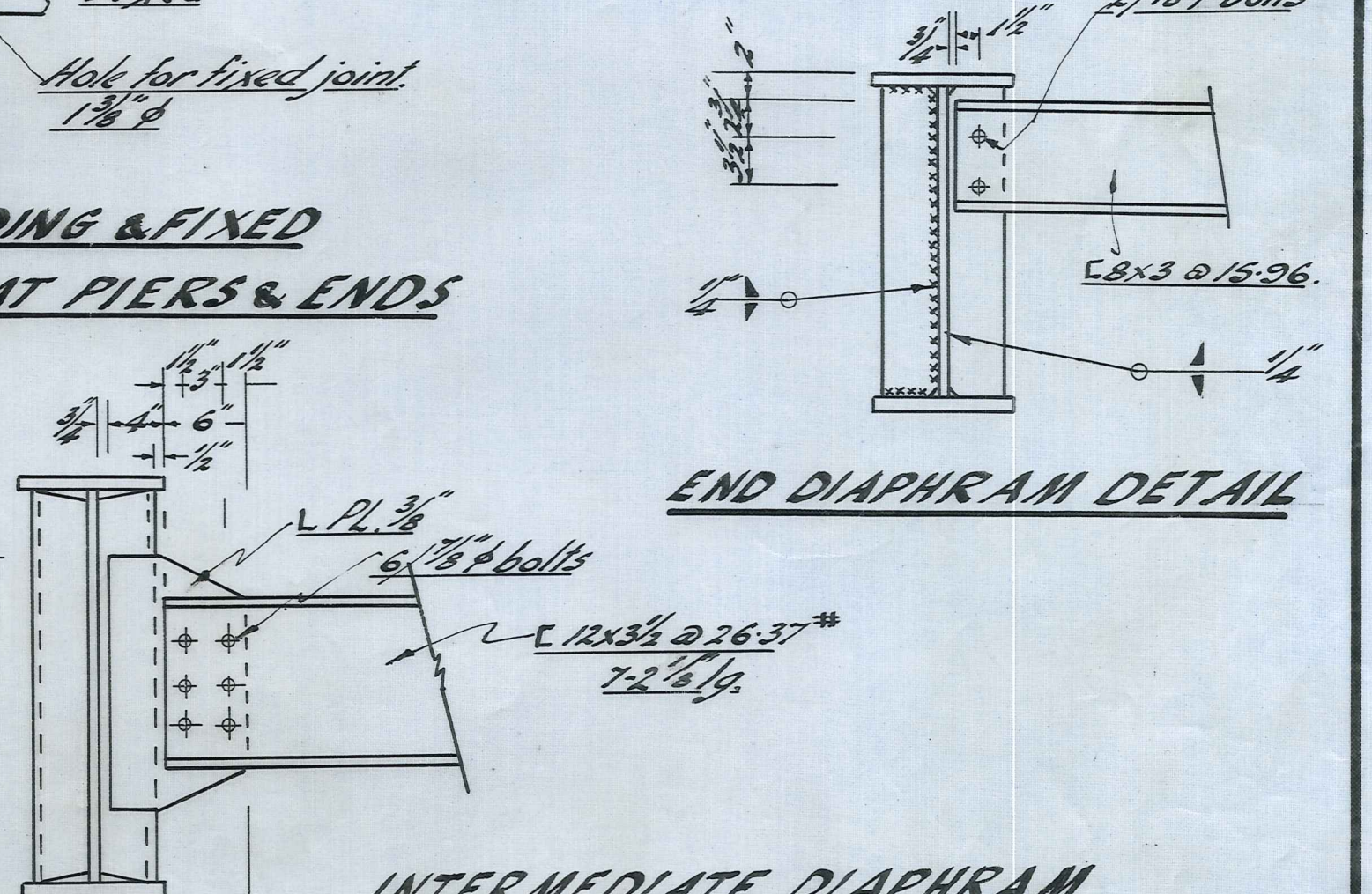
CAMBER DIAGRAM



DETAIL SHEAR CONNECTORS



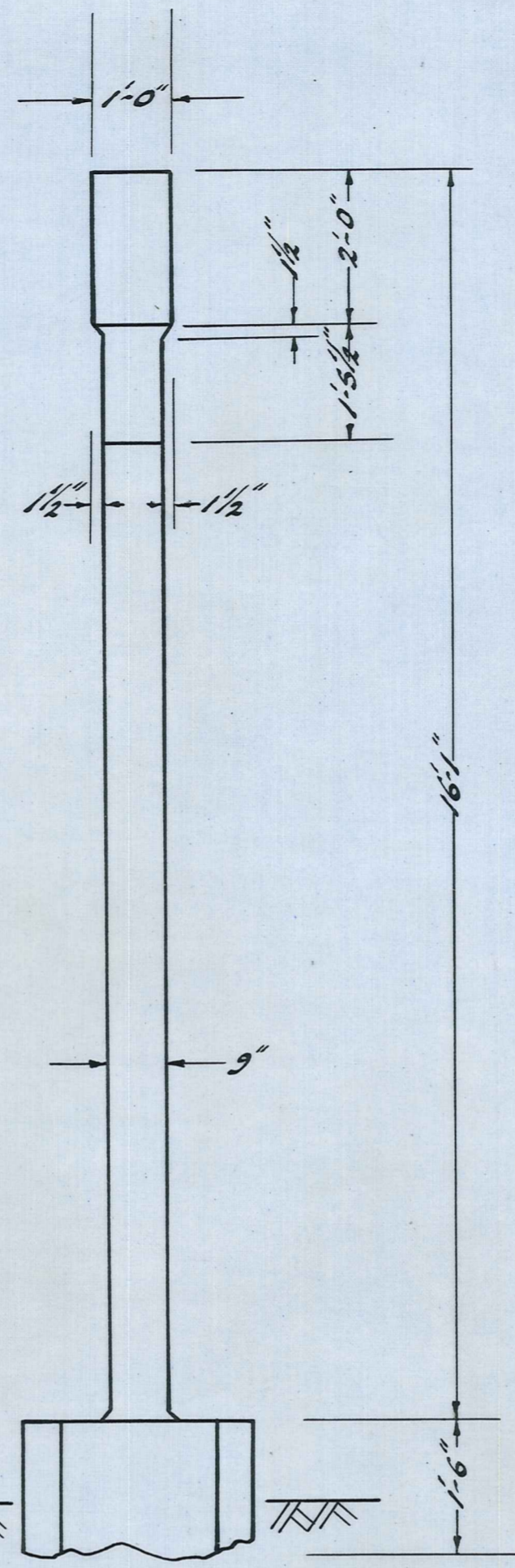
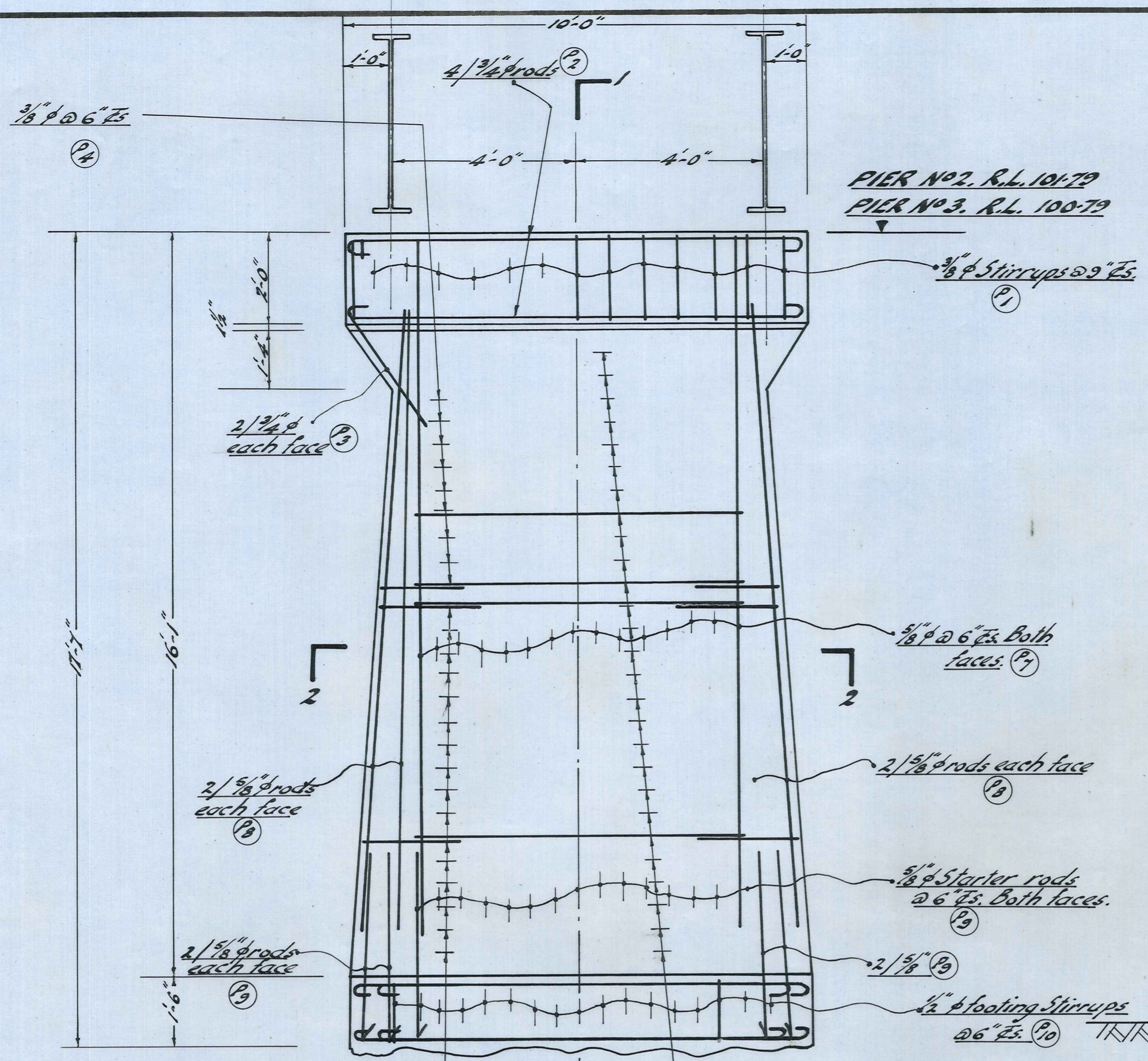
SECTION A-A TYPICAL INTERMEDIATE CROSS FRAME



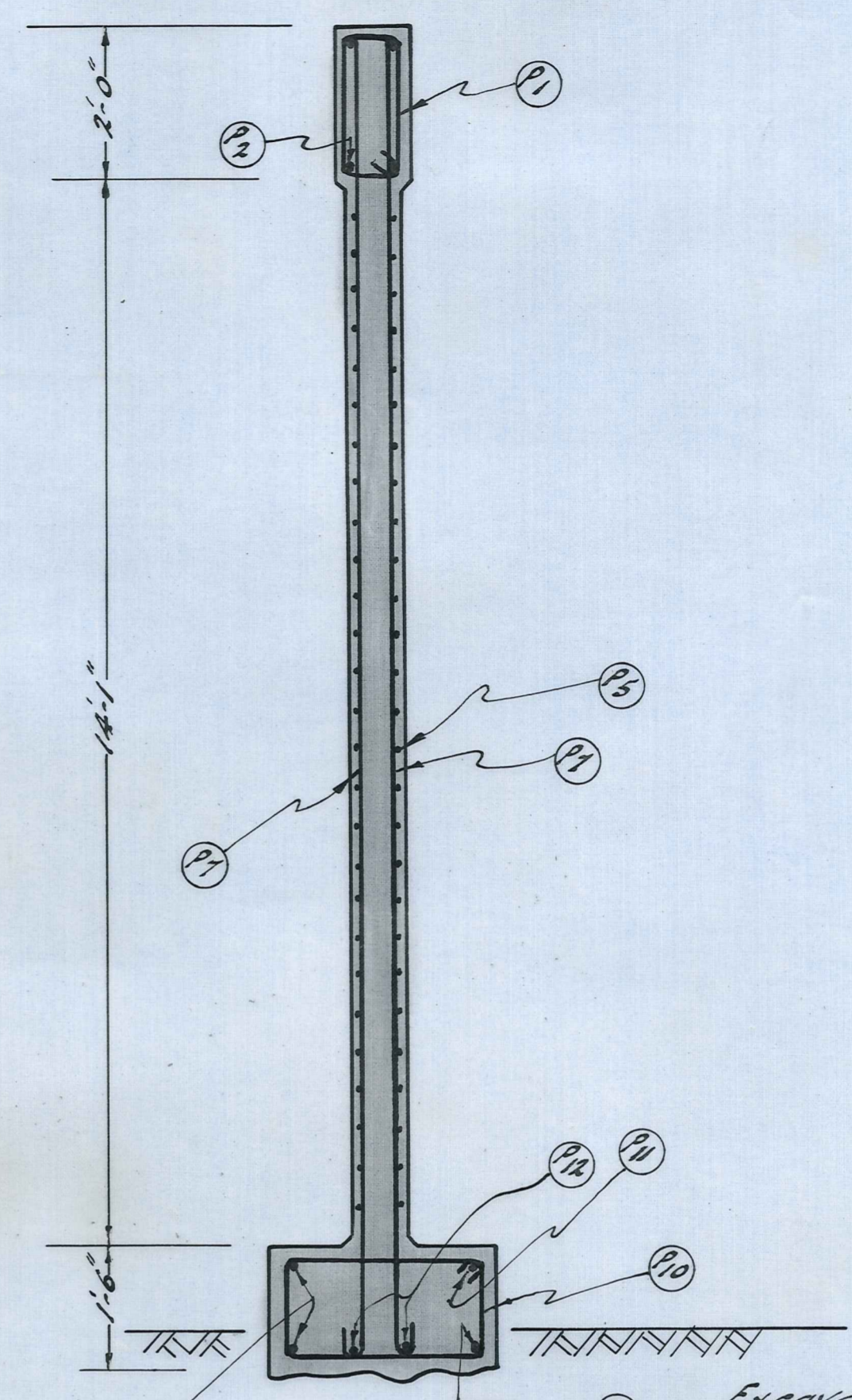
END DIAPHRAM DETAIL

Amended A.E.T. 31th Jan 1964 Shear Connectors off site. Scales: 3/16" to 1'-0"; 1/8" full size; 1/4" full size.

See Sheet 4033/2 for
Detail of H.D. Bolts
for Girders

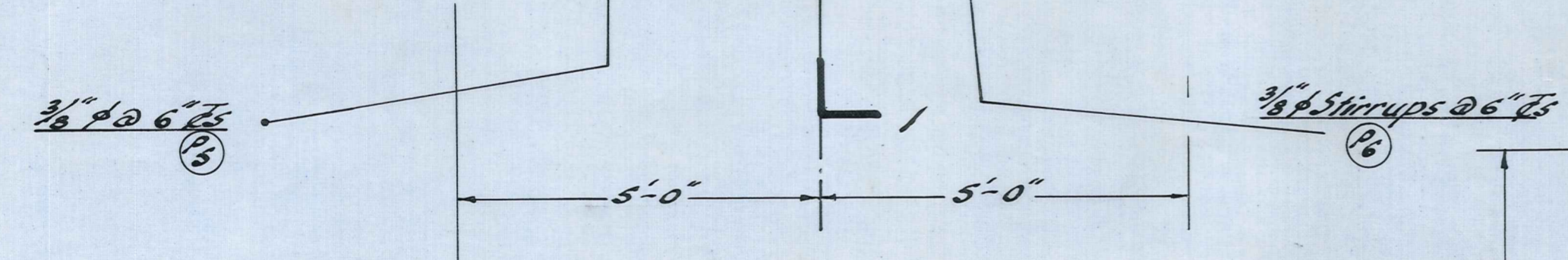


ELEVATION

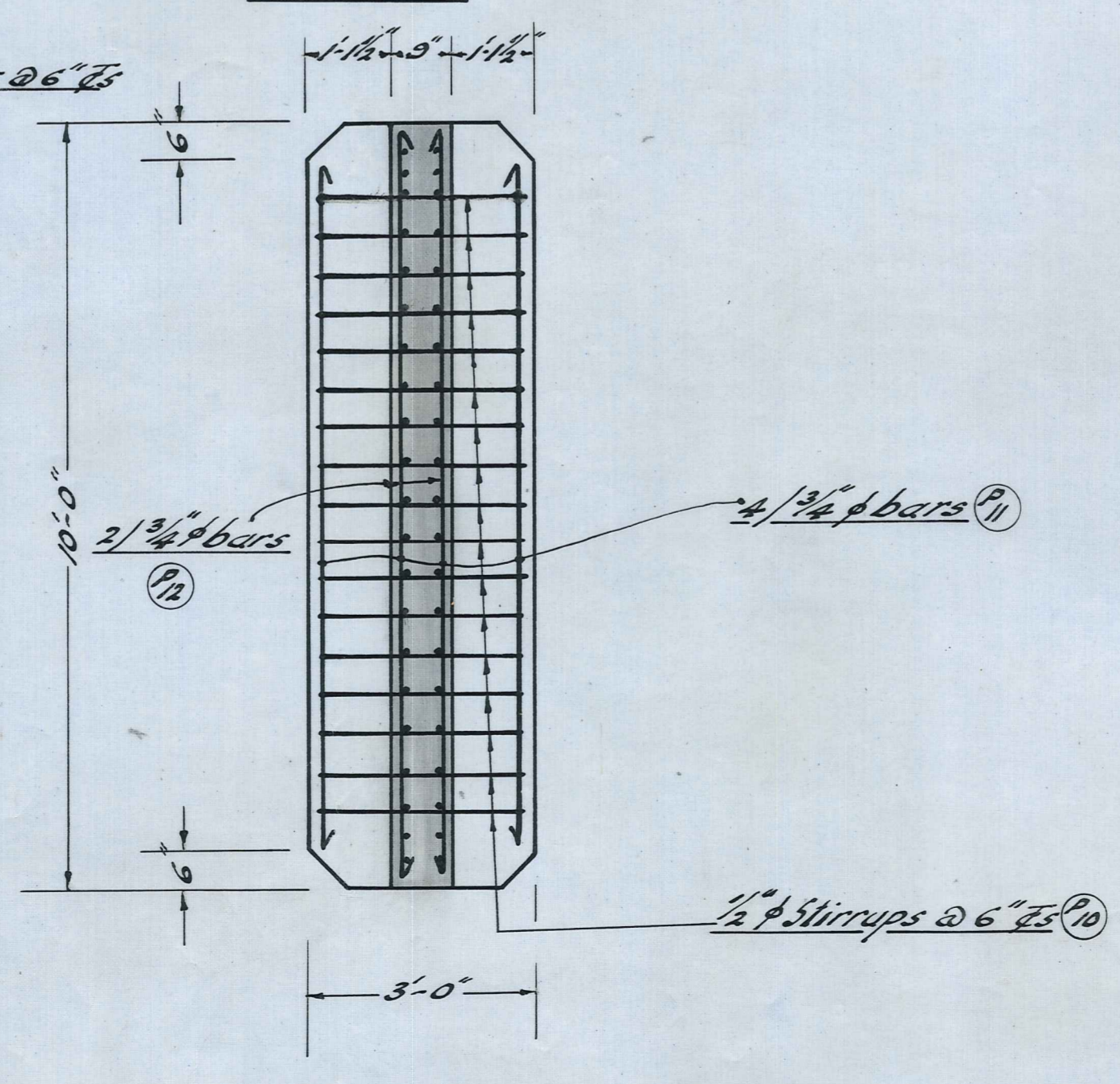


Excavate at least
6" into sound rock

SECTION 1-1

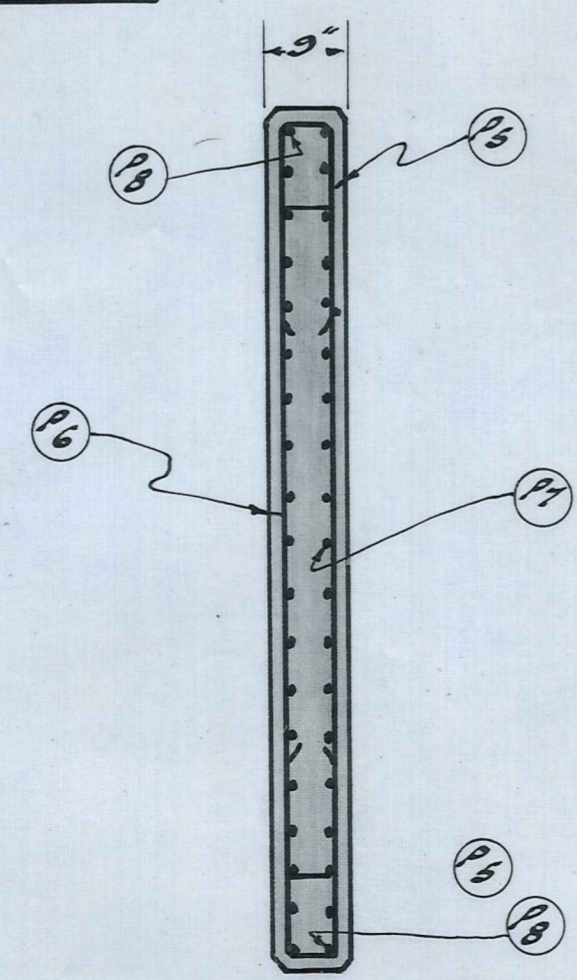


ELEVATION



FOOTING PLAN

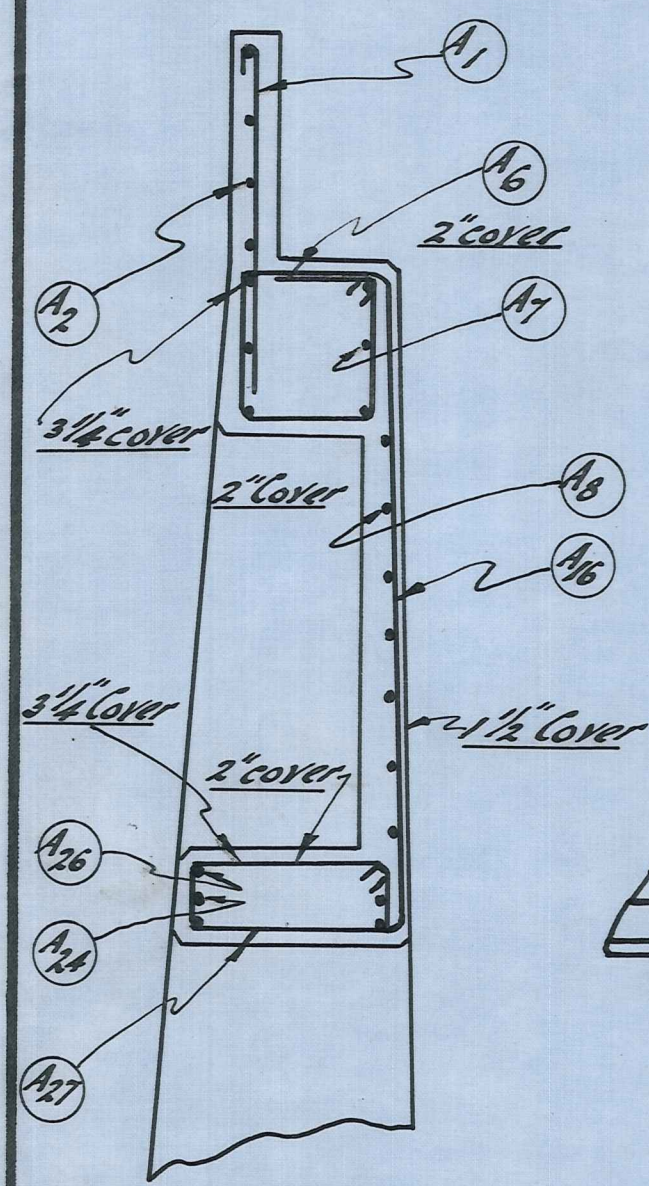
DETAIL OF PIERS
No. 2 & 3.



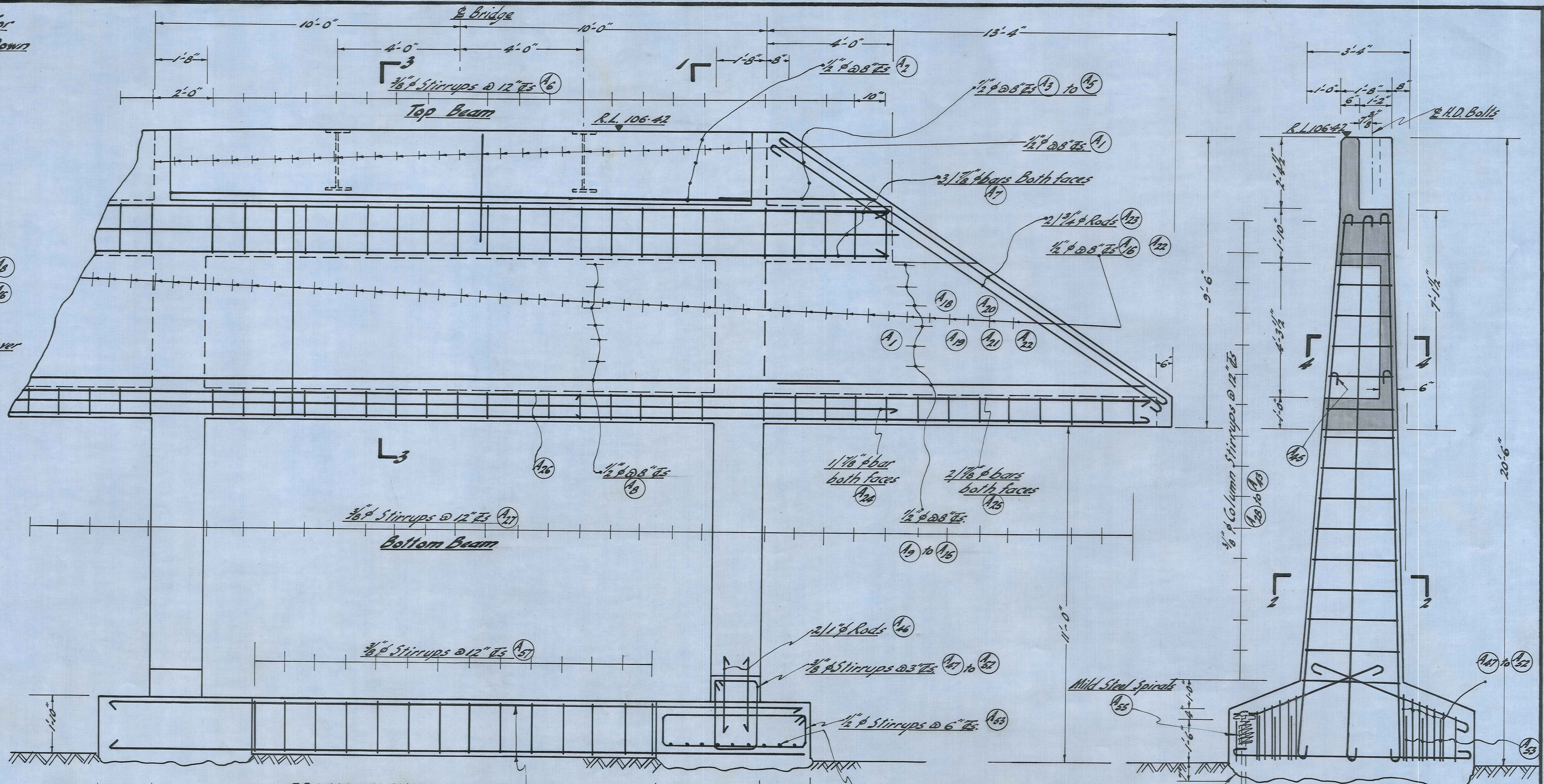
SECTION 2-2

Scale: 1/2" = 1'-0"

See Sheet 4033/2 for
Detail of Holding Down
Bolts for Girders



SECTION 3-3



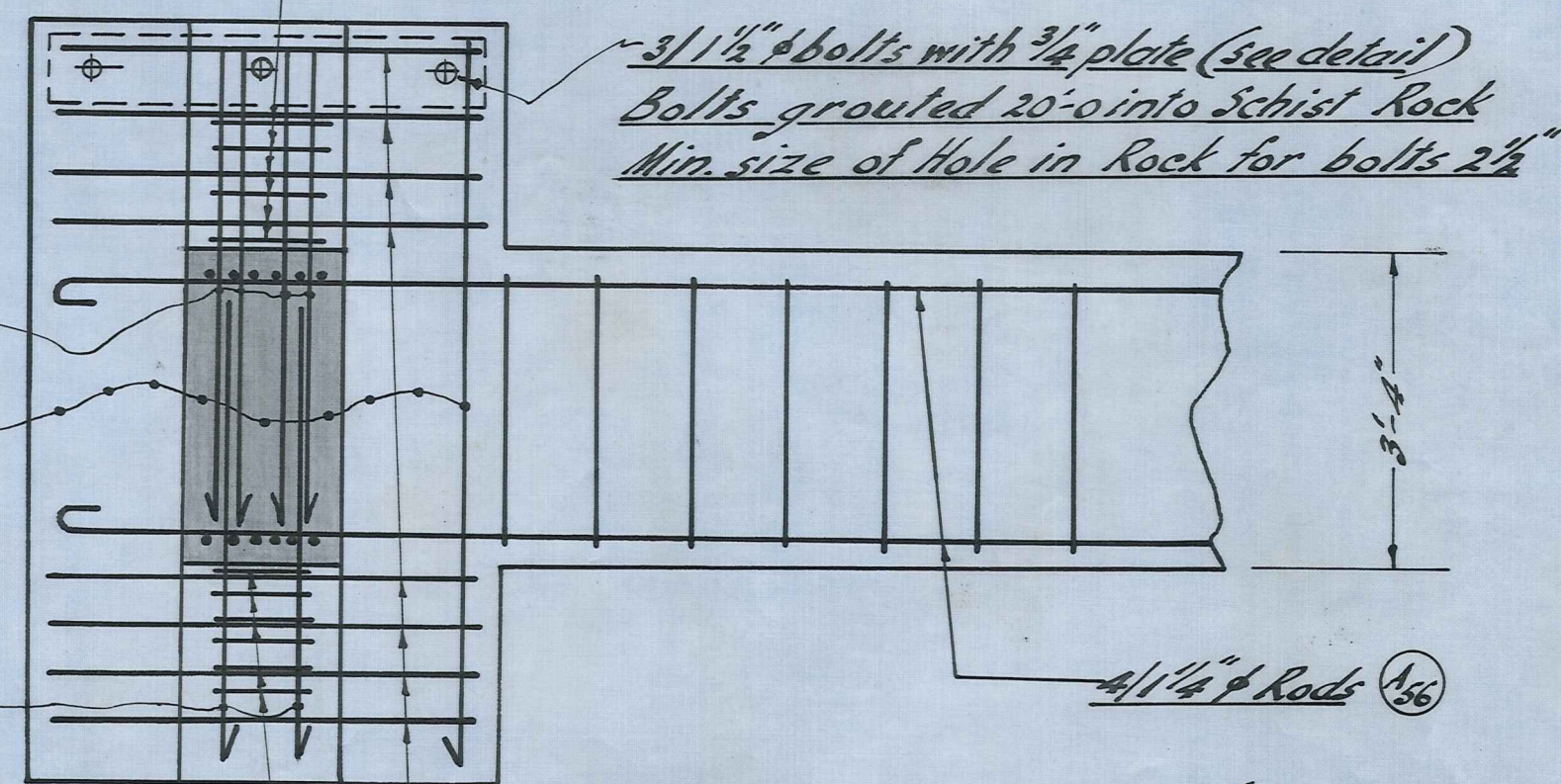
FRONT ELEVATION
Scale: 1/2" to 1'-0"

4/1" rods Not on Schedule
welded at one
end to 3/4" plate.

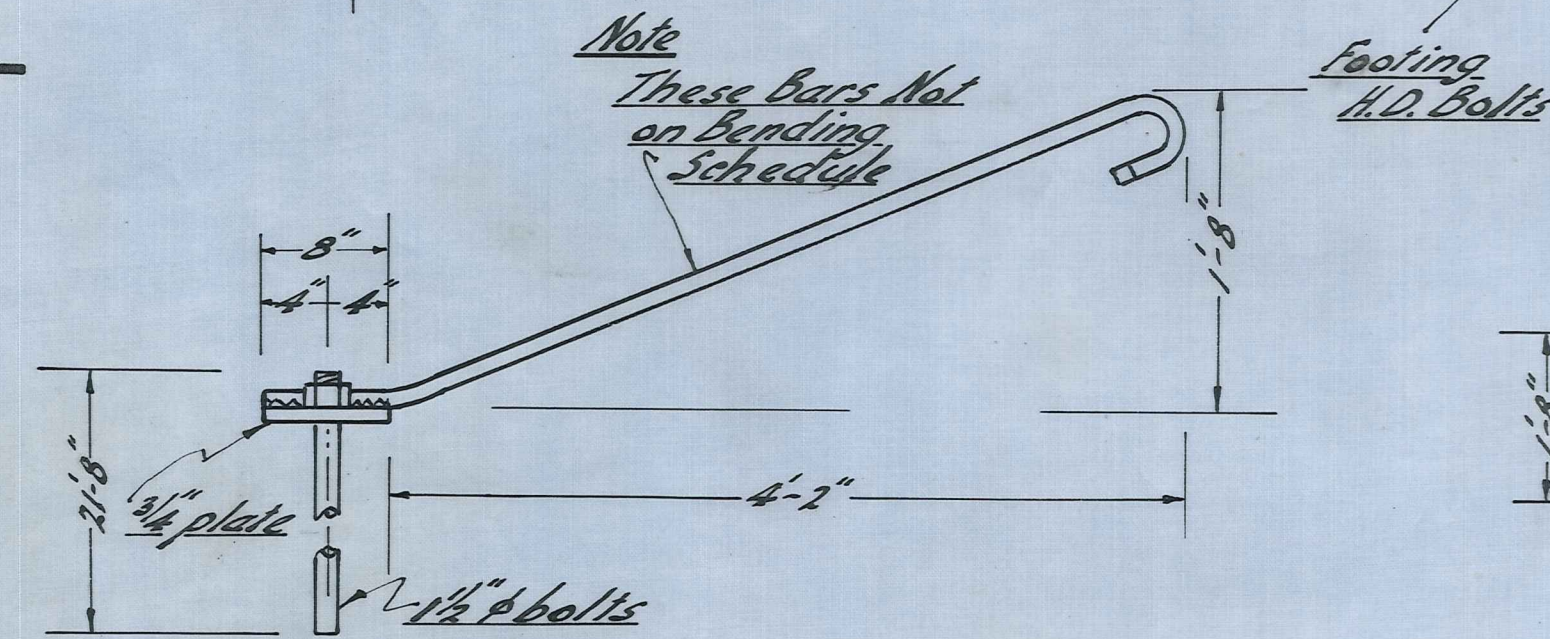
3/4" rods @ 6" c/c
Bottom of footing

2/1" rods

Scales: 1/2" to 1'-0" Unless otherwise shown



FOOTING PLAN (Scale: 1/2" to 1'-0")

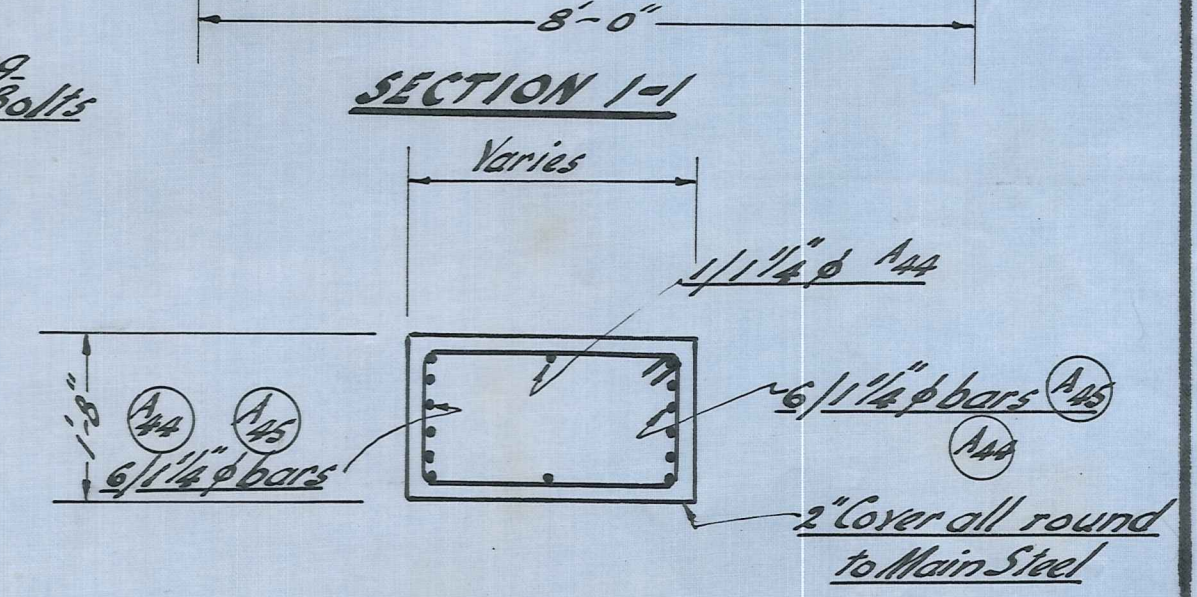


DETAIL FOOTING

HOLDING DOWN

BOLTS

Scale: 1" to 1'-0"



SECTION 1-1

SECTION 2-2

SECTION 4-4

TIROITI BRIDGE
ABUTMENT NO.1

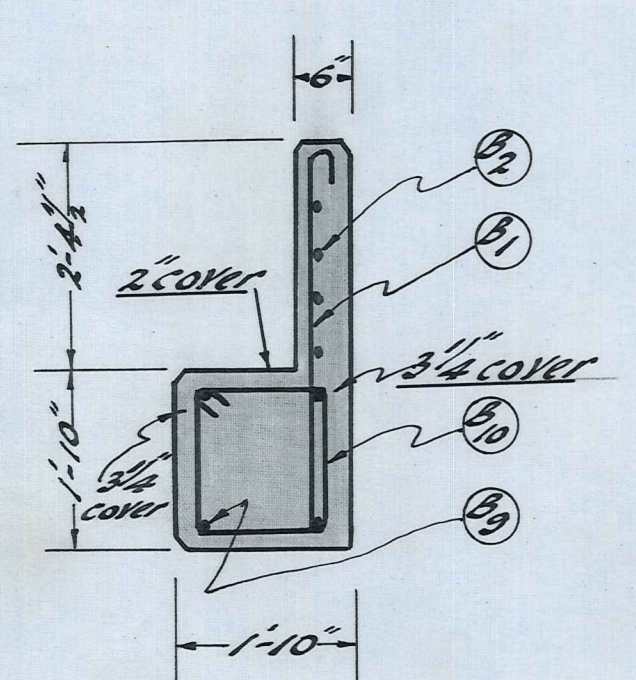
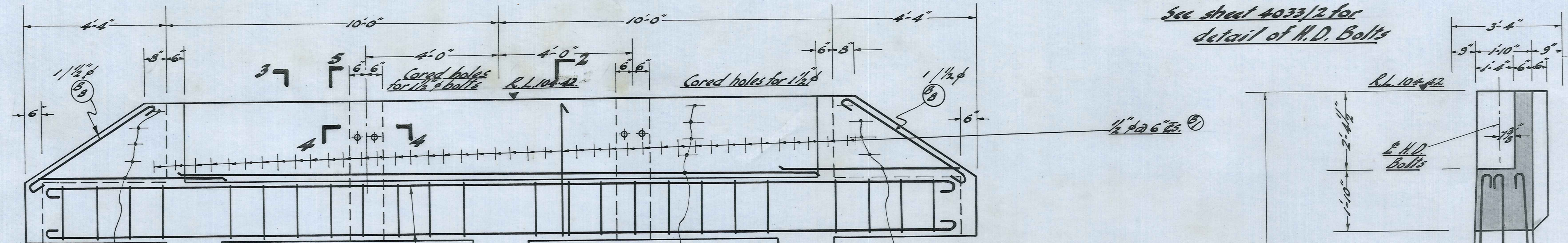
MANIOTOTO COUNTY COUNCIL

DUFFILL, WATTS & KING
CONSULTING CIVIL & STRUCTURAL ENGINEERS
DUNEDIN and INVERCARGILL

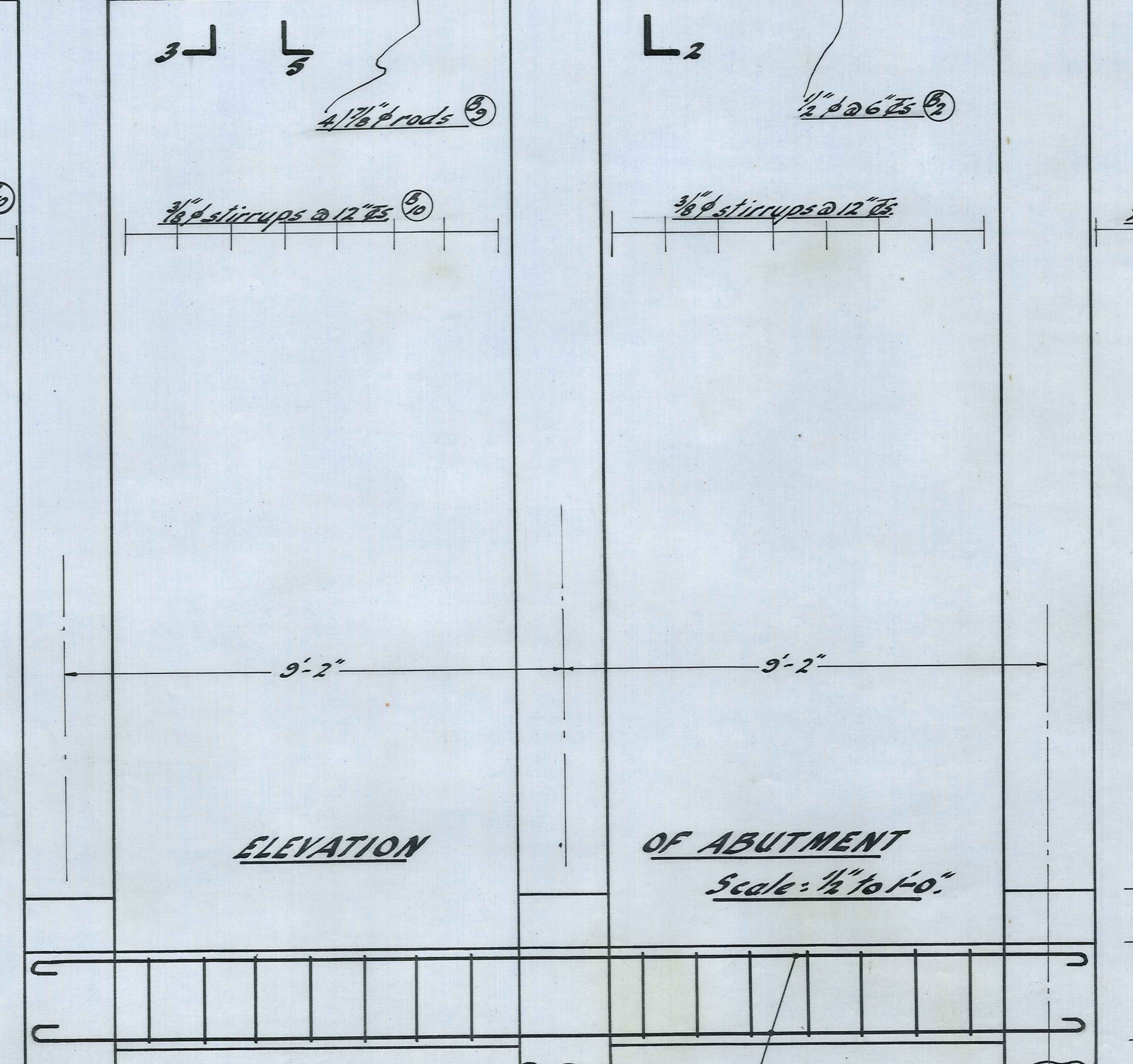
NAME: A.E. Tyndall
DATE: Dec 1963
DRAWN: G.D. Stone
CHECKED: A. Allwooden
APPROVED: A. Allwooden

JOB NO. 4033/4
F.B.K. 176 FILE No. 6/45

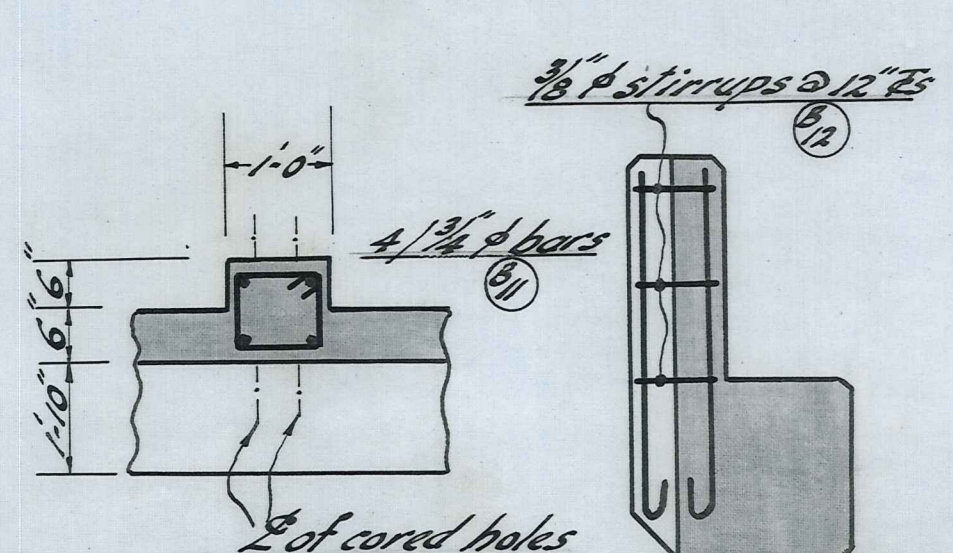
See sheet 4033/2 for detail of H.D. Bolts



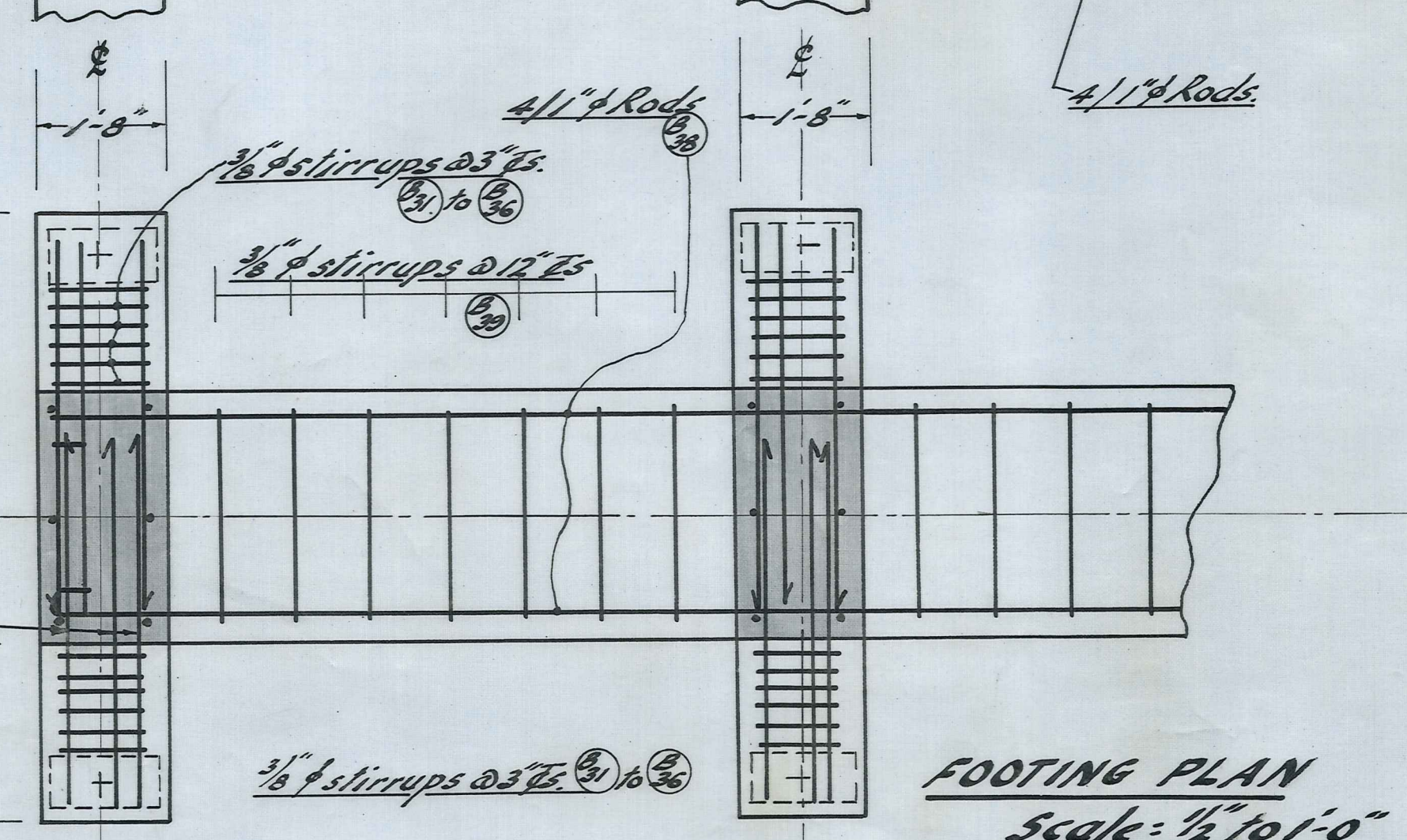
SECTION 3-3



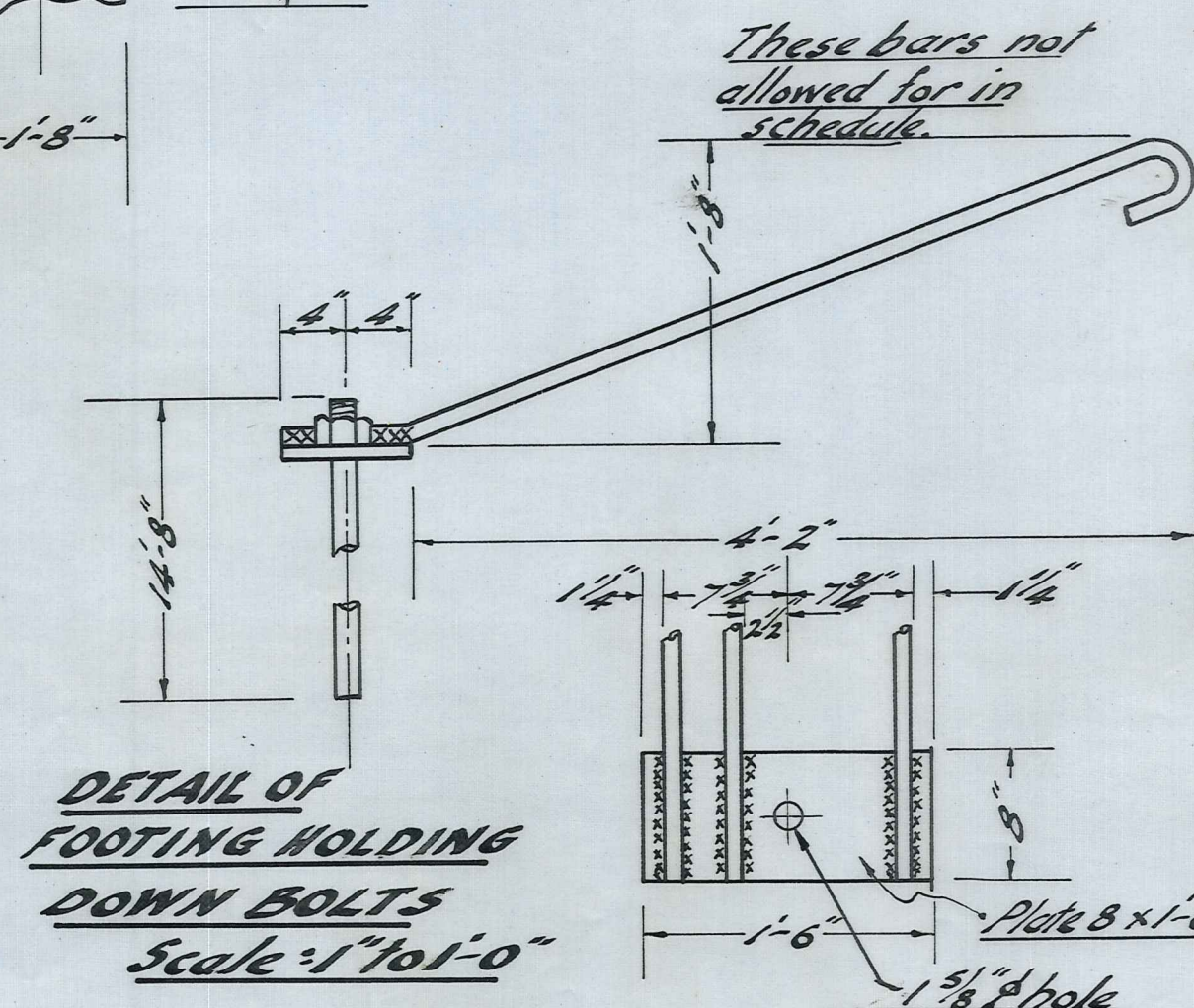
ELEVATION OF ABUTMENT Scale: 1/2" to 1'-0"



SECTION 4-4 SECTION 5-5 Scale: 1/2" to 1'-0"

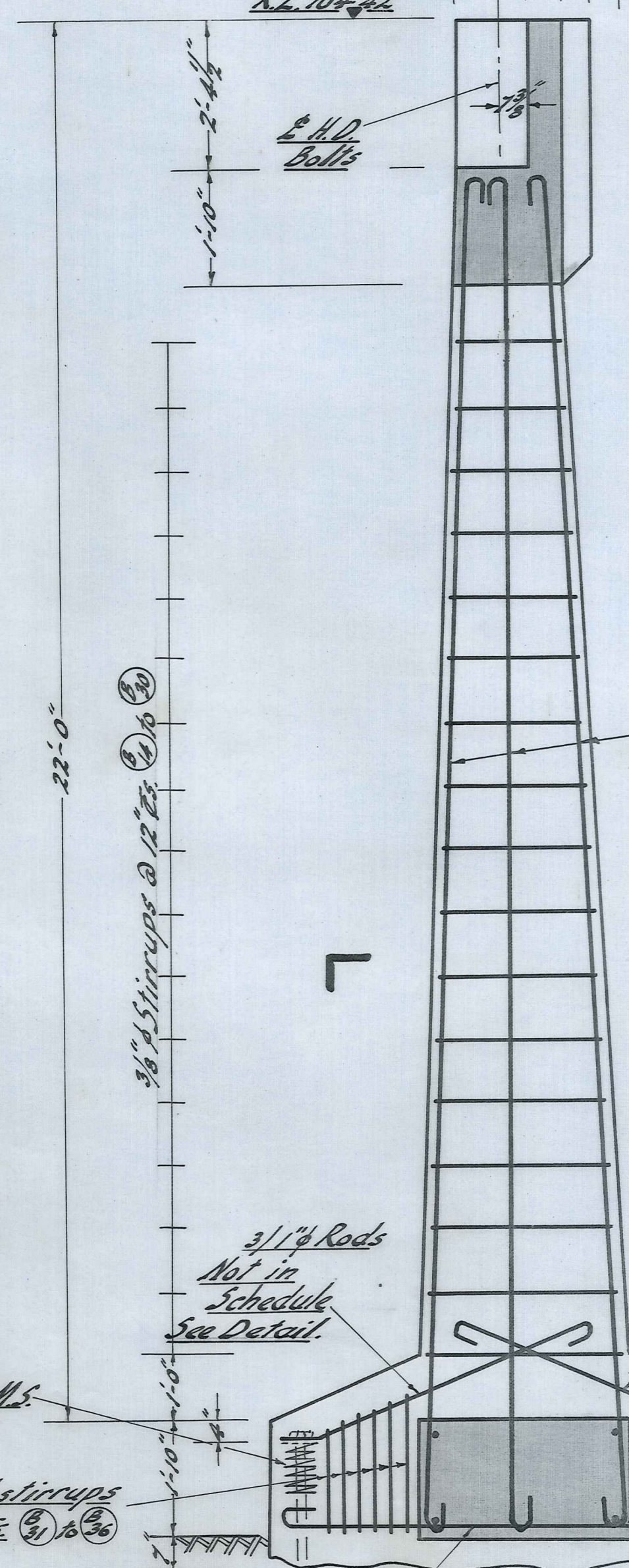


FOOTING PLAN scale: 1/2" to 1'-0"

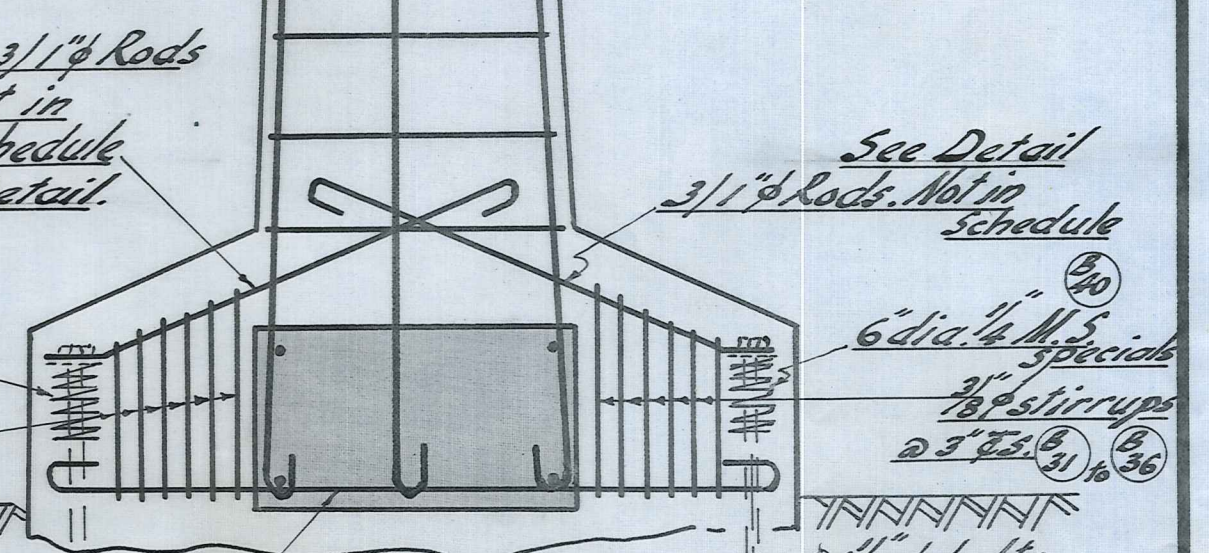


DETAIL OF FOOTING HOLDING DOWN BOLTS Scale: 1" to 1'-0"

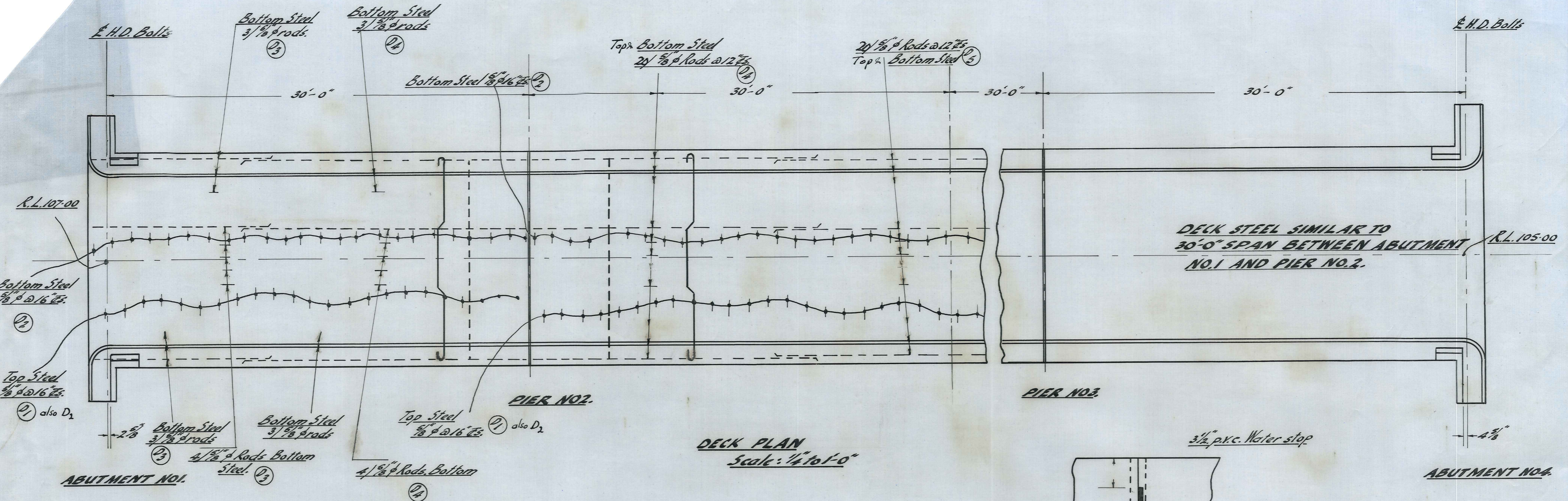
1 1/2" bolts grouted 13'-0" into Rock. Min size of hole in rock for bolts 2 1/2" Carry footing 7" into solid Schist Rock.



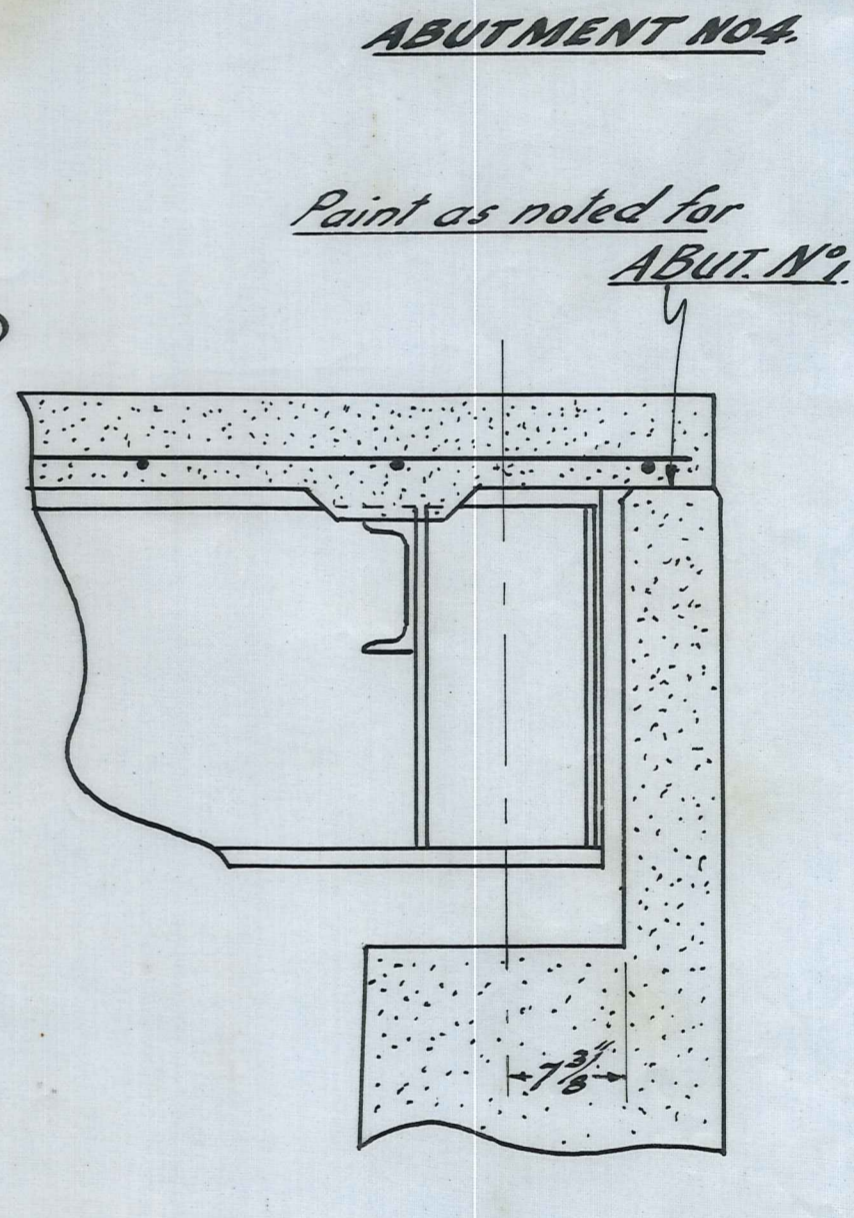
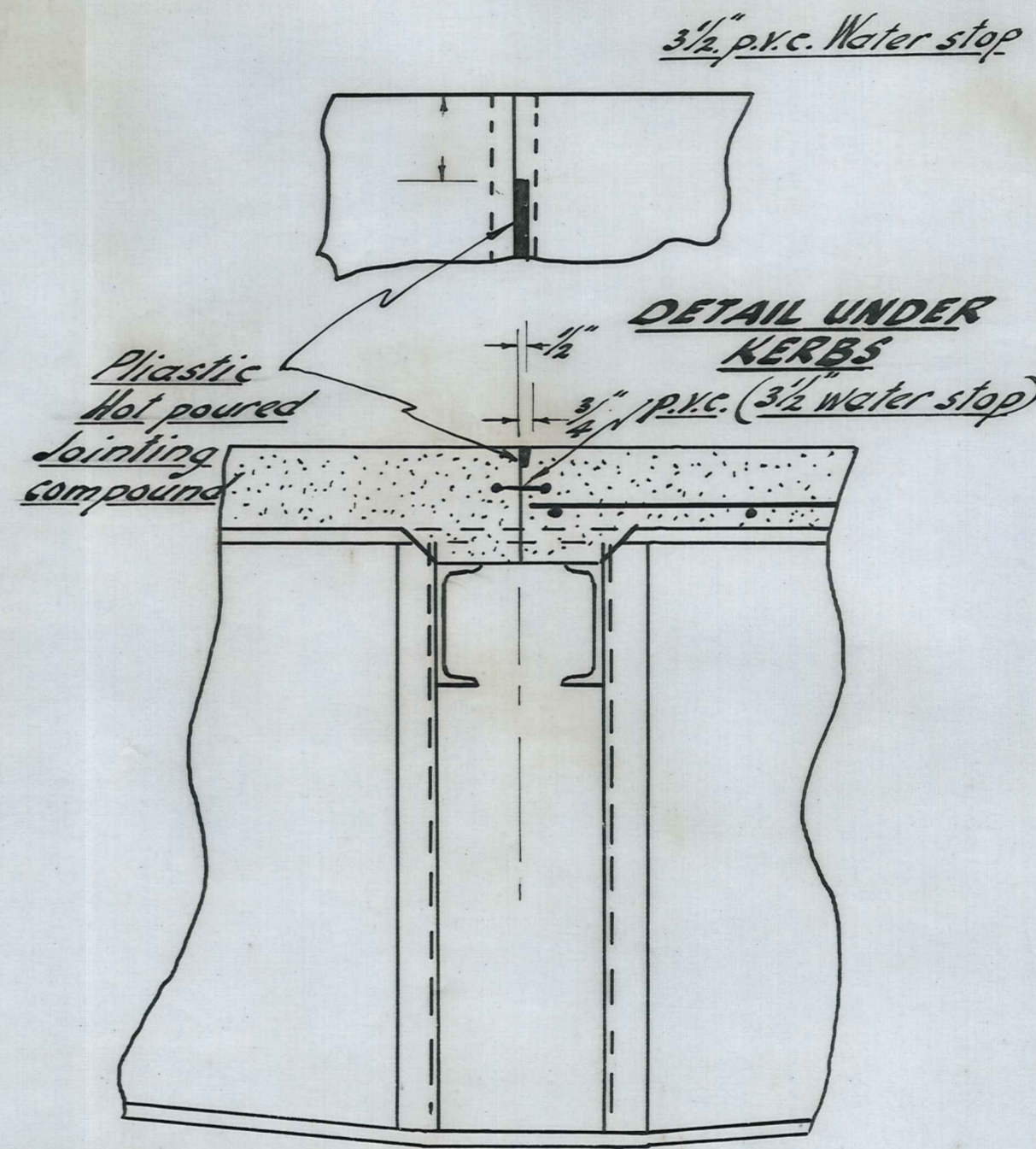
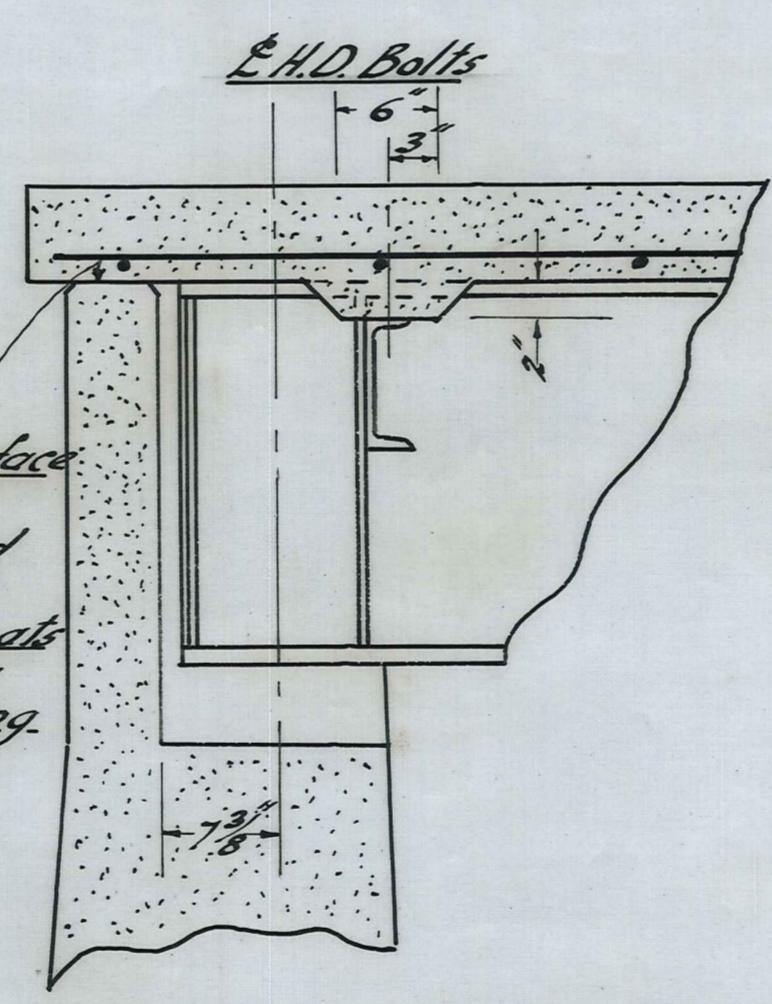
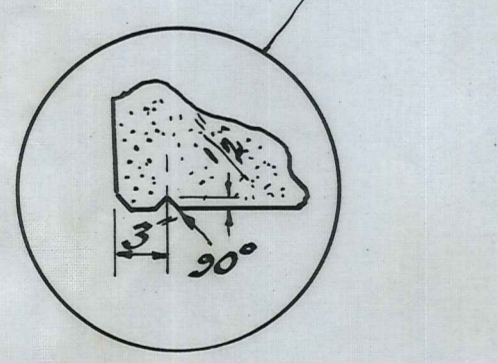
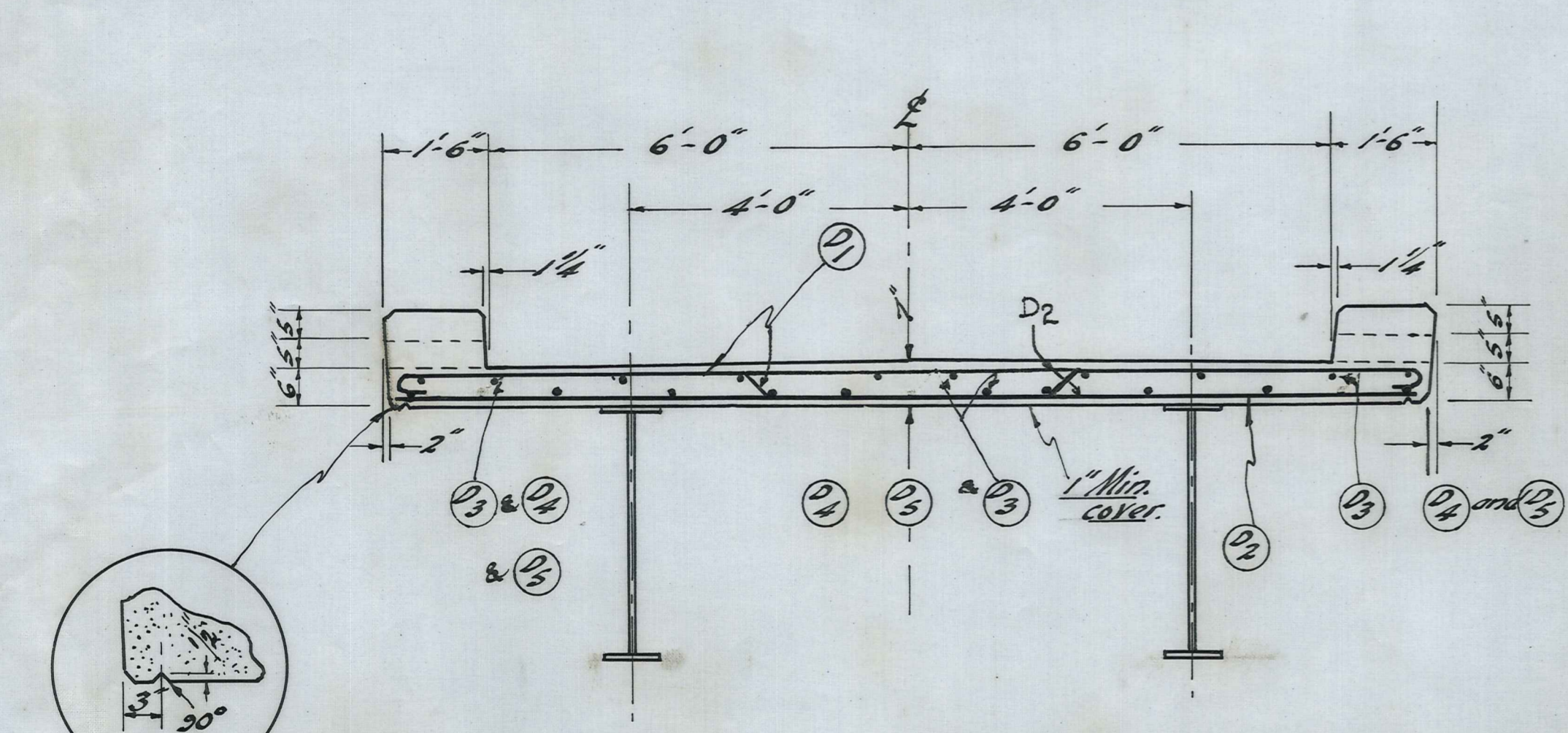
SECTION 2-2 Scale: 1/2" to 1'-0"



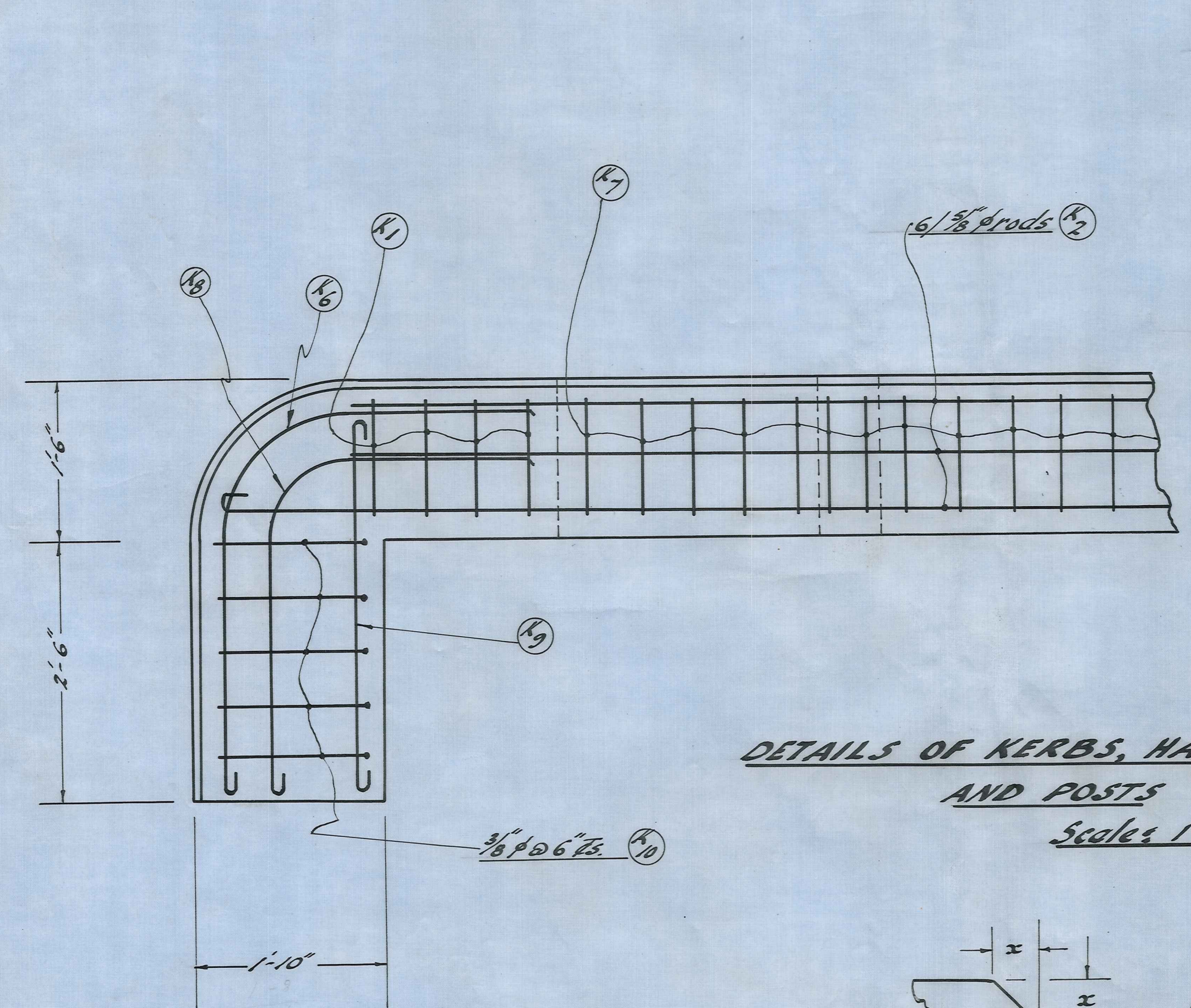
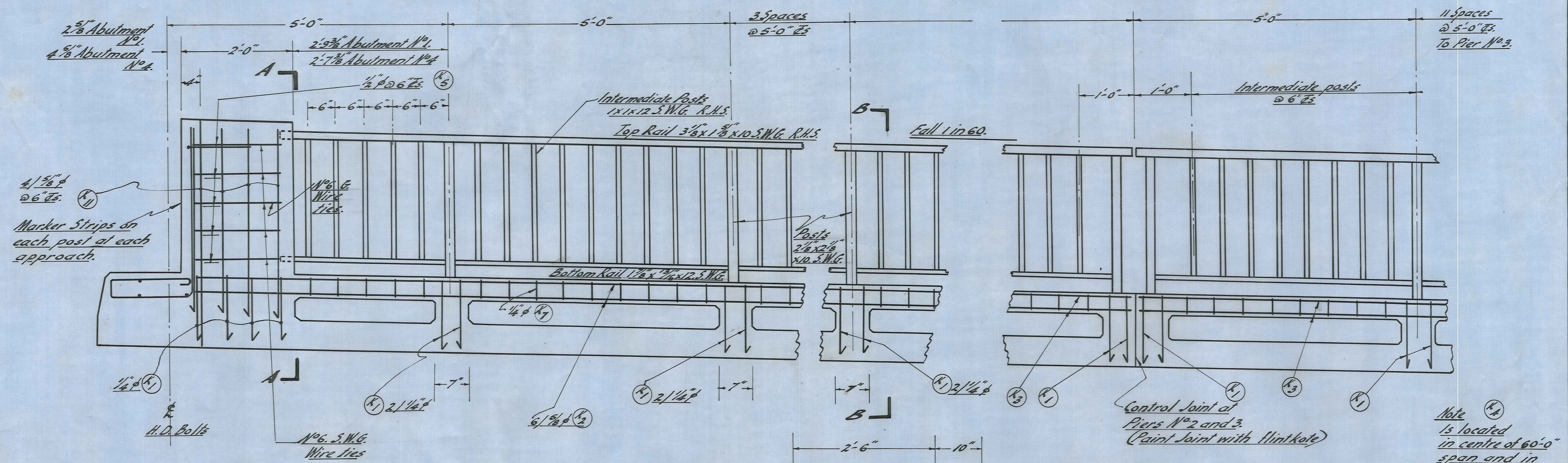
SECTION 1-1 Scale: 1/2" to 1'-0"



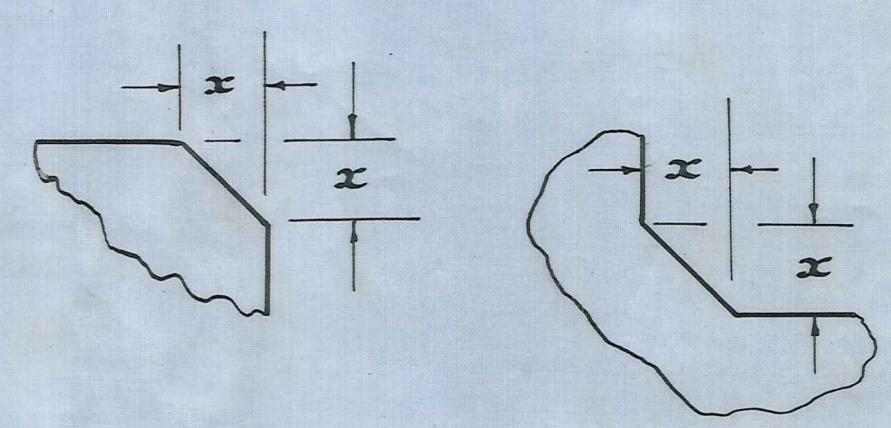
--- Denotes Bottom Steel
 ——— Denotes Top Steel



—DETAIL OF DECK—

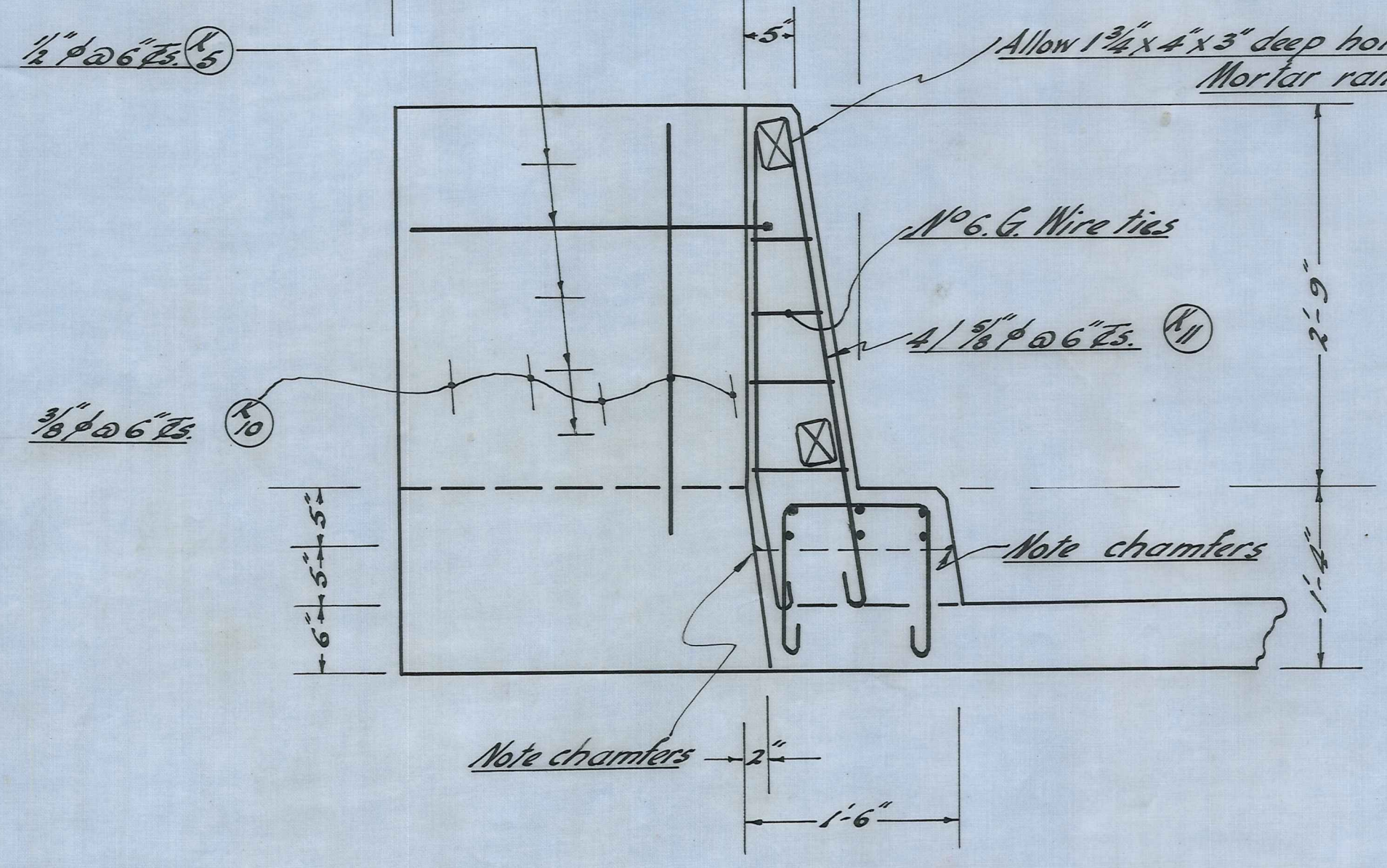


DETAILS OF KERBS, HANDRAILS AND POSTS
Scales 1" to 1'-0"

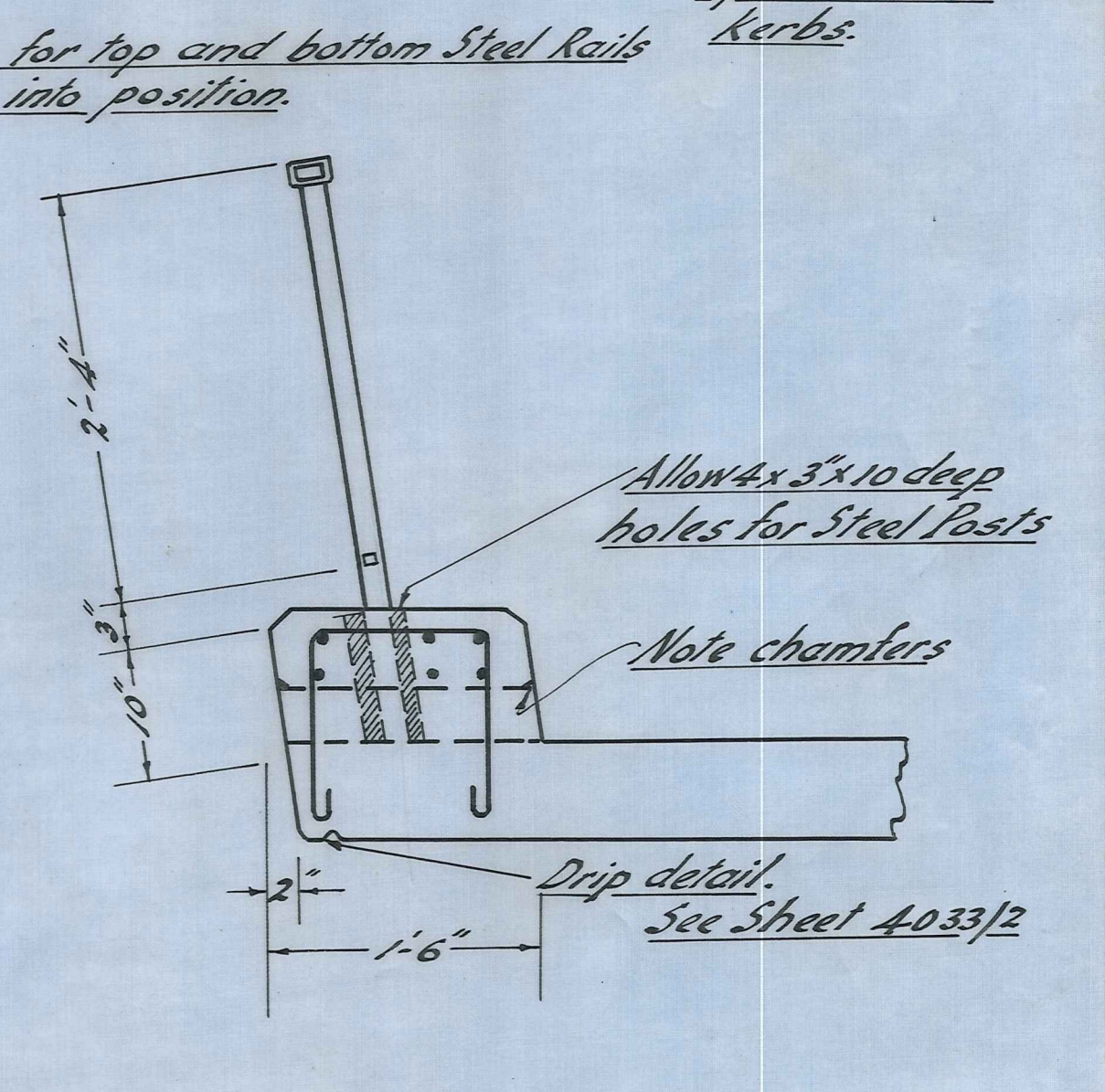


CHAMFER DETAILS

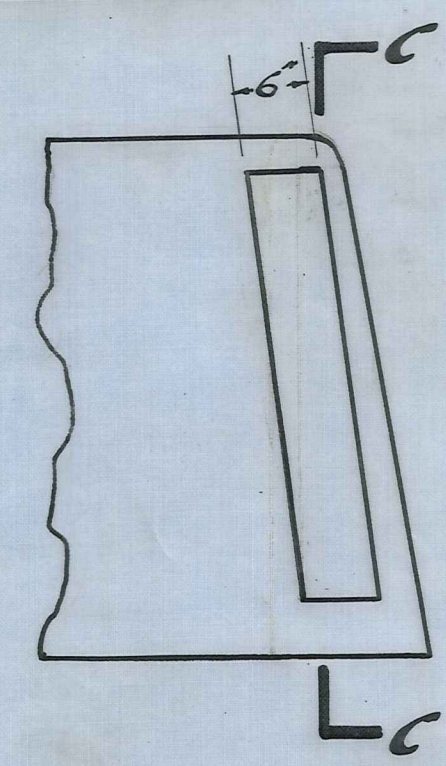
x = 1" for posts and kerbs.
x = 1 1/4" elsewhere except where noted



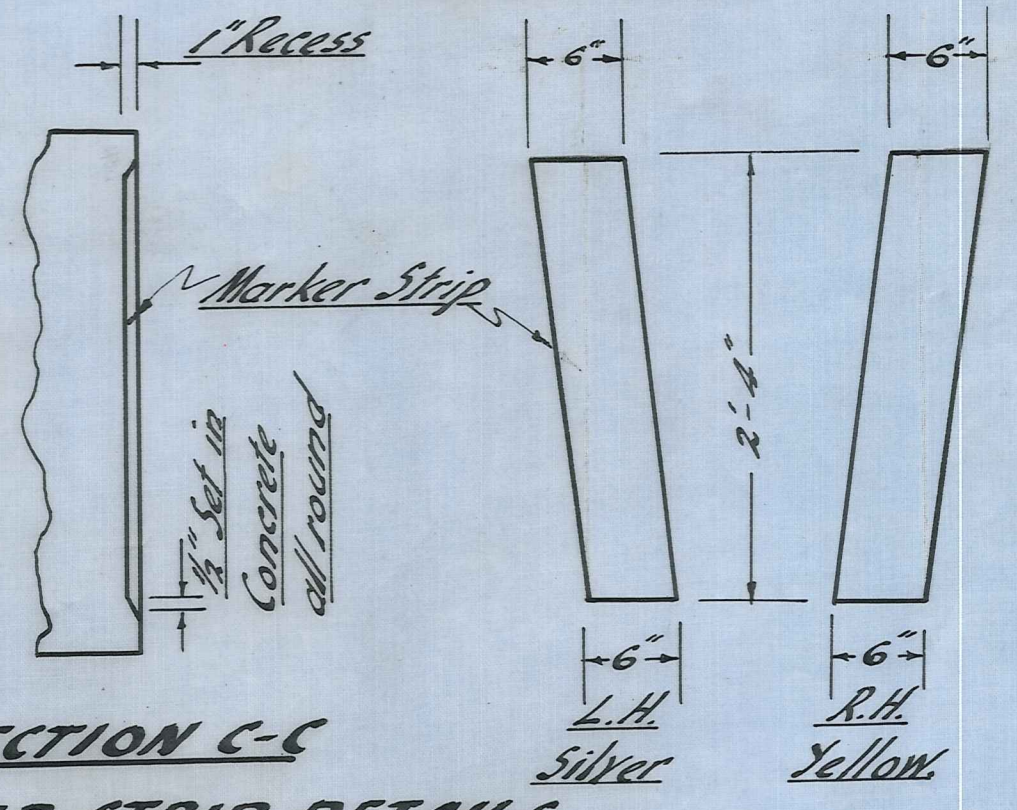
SECTION A-A



SECTION B-B



SECTION C-C
MARKER STRIP DETAILS



STEEL BENDING SCHEDULE

Main data table with columns for Mark, Dia, Type, Position, No Off, Dimensions (a, b, c), Cur Length, and Shape diagrams (Types I-XIII).