

XIV/2/125

Department of Lands & Survey,  
P.O. Box 896, DUNEDIN.

12-7-50

The County Clerk,  
MANIOTOTO County Council,  
P. O. Box 41  
RANFURLY

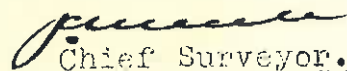
Dear Sir,

The Town of RANFURLY Extension No. 19  
Scheme Plan No. 833

I forward herewith Scheme Plan of the above subdivision  
for your comments in terms of Section 3(4) Land Subdivision in  
Counties Act, 1946.

Please endorse your comments on the form enclosed herewith.

Yours faithfully,

  
Chief Surveyor.

ENCL. Form

20  
C.T. 132/10  
Mary Jones

C/T 204/268  
BALANCE AR. 7-2-23

25



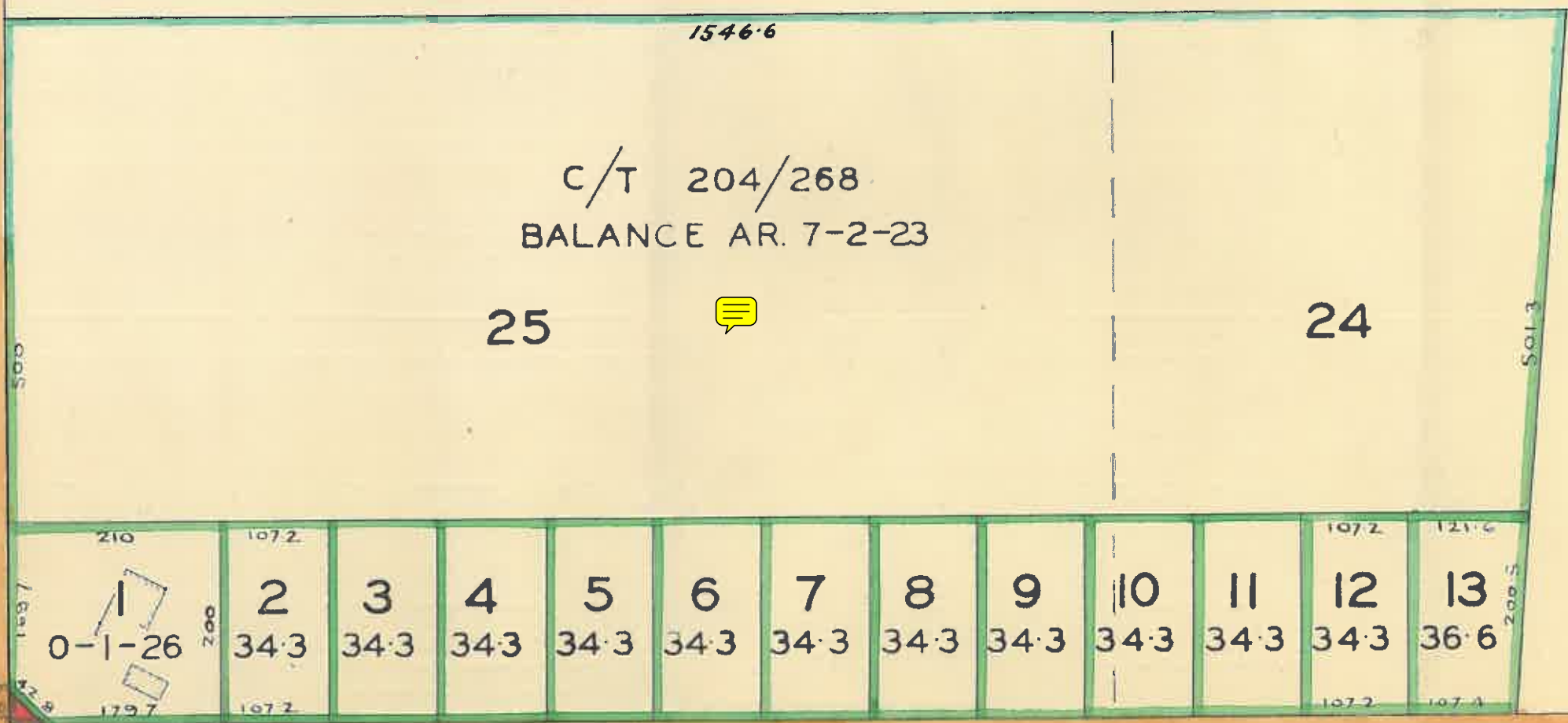
24

21  
C/T 204/267  
R J Black



DUNGANNON ST.

14  
RD. WD. 0-7 P.



CAULFIELD STREET

100

100

I, Eric Geoffrey M'George Reg. Surveyor  
hereby certify that this scheme plan has  
been prepared by me in accordance with the  
provisions of the Land Subdivision in Counties

APPROVED