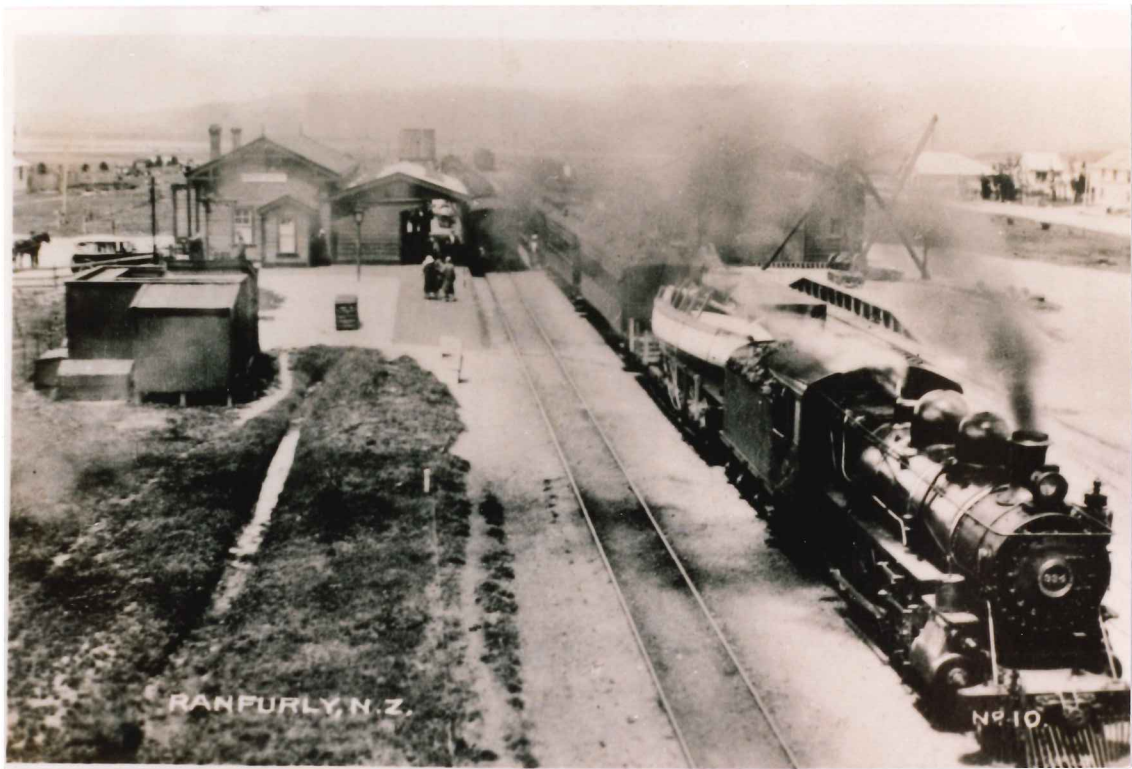


Images associated with the the railway, Maniototo. Sources and dates unknown.



Railway staff, Ranfurly. (n.d.)







A STOPPAGE OF THE SNOW PLOUGH A FEW YARDS FROM ROUGH RIDGE STATION





*Photograph 33:* A mid- 1950's shot looking south. The Centennial Tea rooms are visible on left- probably capturing most of the midday meal business at this time.





