

KEY

● Manhole	○ Toby
■ Mudtank	● Soakpit
○ Lamphole	■ Hydrant
⊕ Valve	— Blank cap
— Water	— Trickle header
— Sanitary Sewer	— Stormwater Outlet
— Stormwater	CL Cap level
IL Invert level	□ Trickle Control Box

Note: (Unless otherwise stated)

- 1) All Domestic water Laterals 25mm ϕ HDPE.
- 2) All Foul sewer Laterals 100mm ϕ uPVC.
- 3) All Mudtank outlets 200mm ϕ uPVC.
- 4) Trickle irrigation lines 19mm ϕ L.D. polythene with 4mm trickle emitter tubes.
- 5) Level Datum = M.S.L. (Dunedin)

I, James Martin Potter, Registered Surveyor hereby certify that this plan is an accurate Record of the position of the services constructed for this subdivision.

[Signature] 2/10/95

PATERSON PITTS PARTNERS LTD
SURVEYING CONSULTANTS
CROMWELL

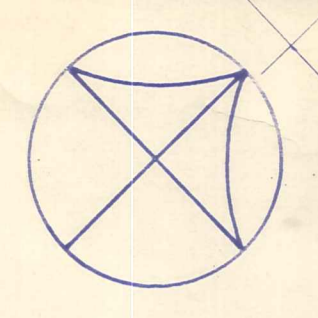
WAKEFIELD BAY SUBDIVISION ~ ASBUILT OF UNDERGROUND SERVICES

SHEET
1 of 3

DRAWN	CHECKED	SCALES	SERIES OF
TRACED	DATE September 1995	1:500	REF

281900M.E 623000M.N

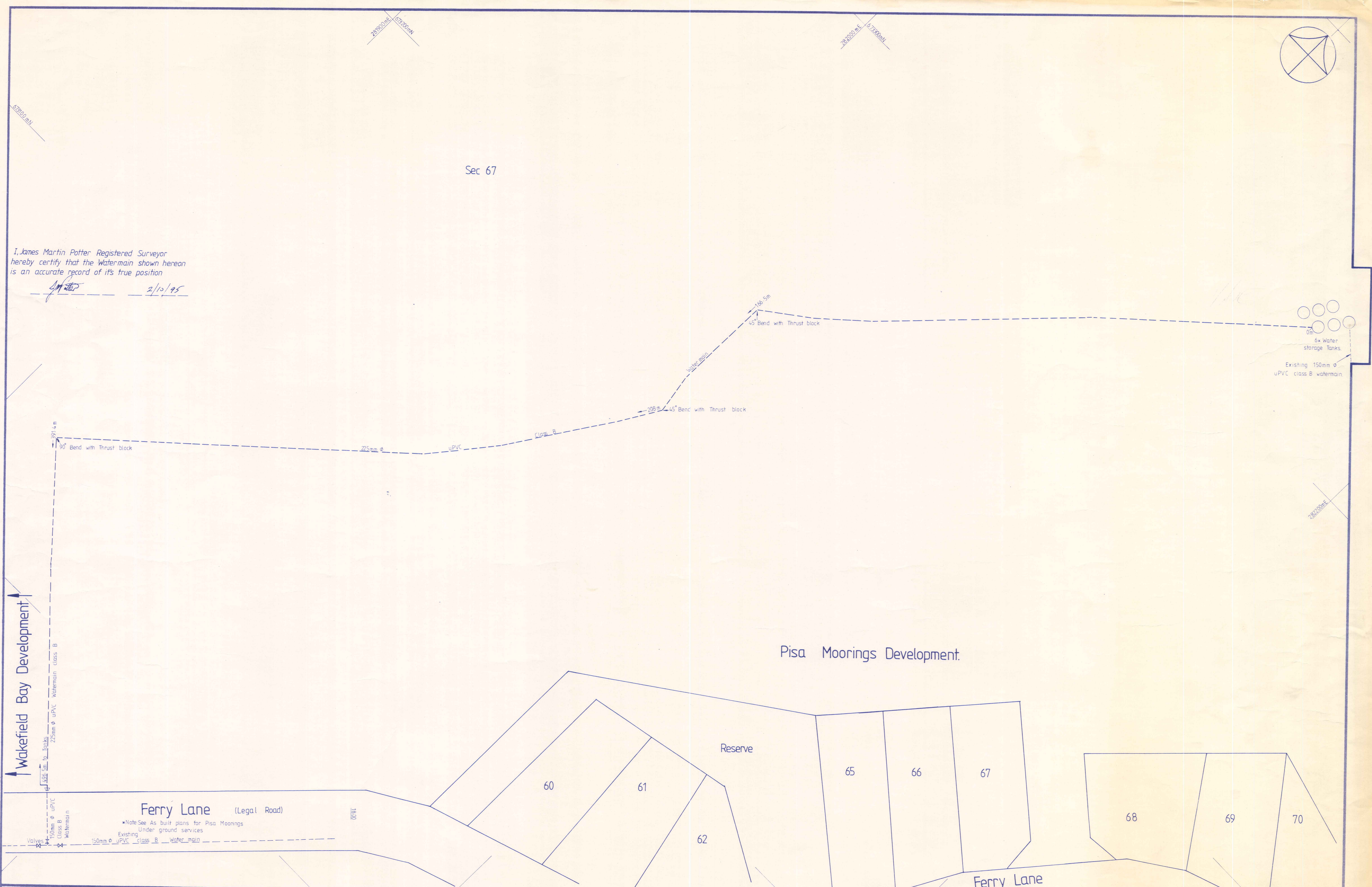
282400M.E 623500M.N



Sec 67

I, James Martin Potter Registered Surveyor hereby certify that the Watermain shown hereon is an accurate record of its true position

J.M.P. 2/10/95



Wakefield Bay Development

Pisa Moorings Development

Ferry Lane (Legal Road)

Note See As built plans for Pisa Moorings Under ground services

PATERSON PITTS PARTNERS LTD
SURVEYING CONSULTANTS
CROMWELL

"As Built" Plan of Wakefield Bay Water Supply

SHEET
3 of 3

DRAWN P.A.B.	CHECKED	SCALES	SERIES OF
TRACED	DATE Sept 1995	1:500	REF