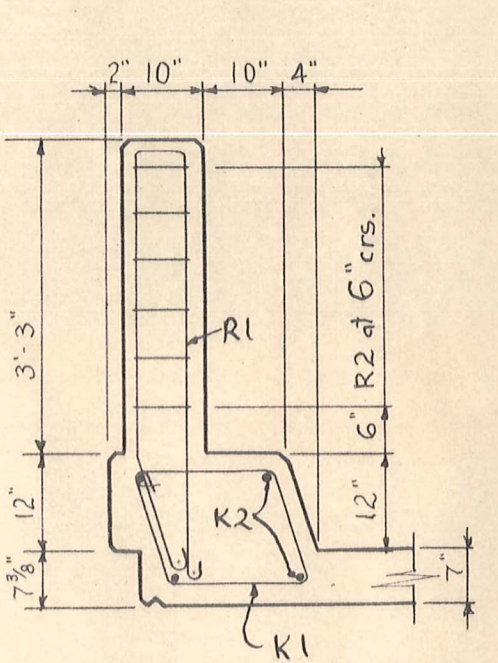
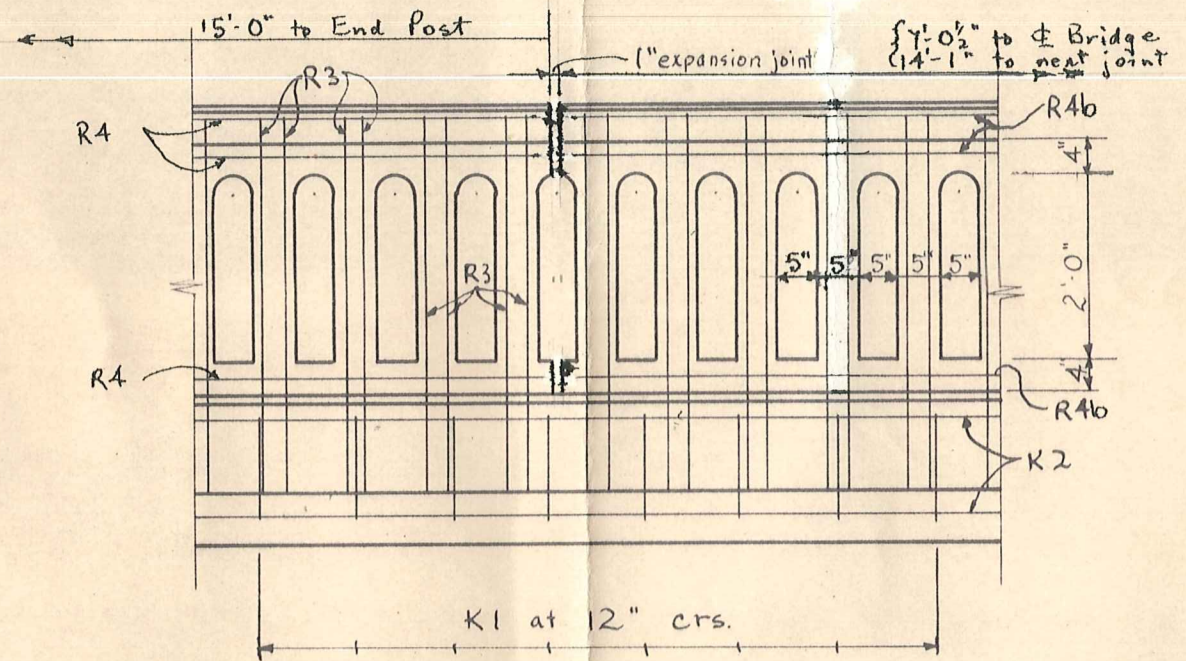


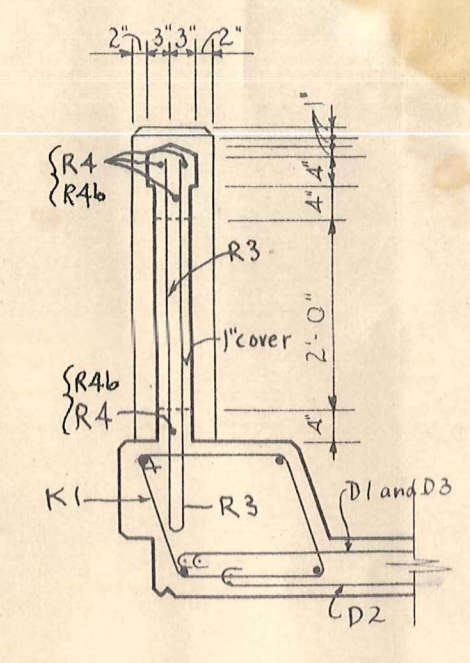
ELEVATION OF END POST AND END KERB  
Scale: 1/2" = 1'-0"



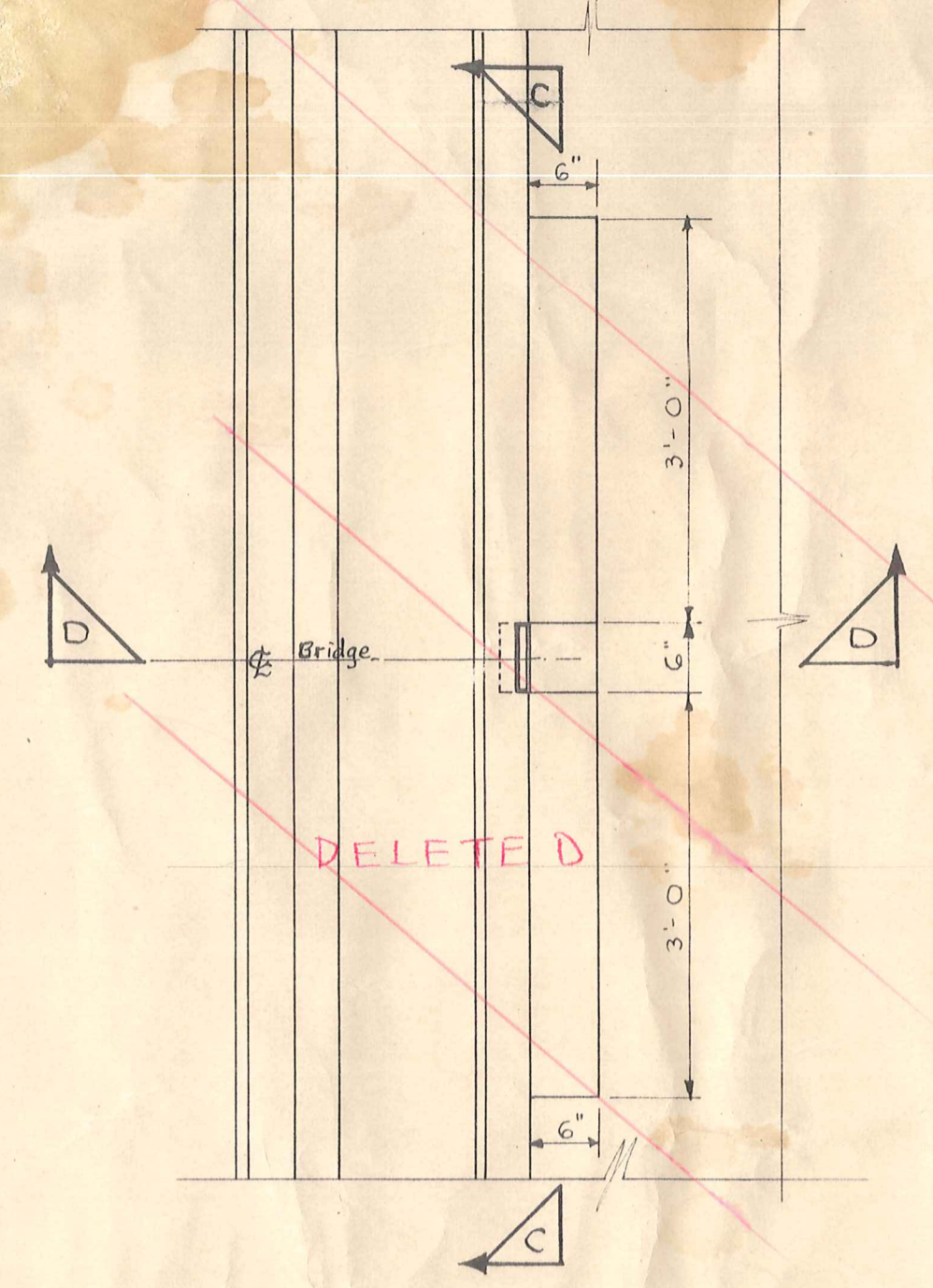
POST SECTION  
Scale: 1/2" = 1'-0"



ELEVATION OF HANDRAILING  
Scale: 1/2" = 1'-0"

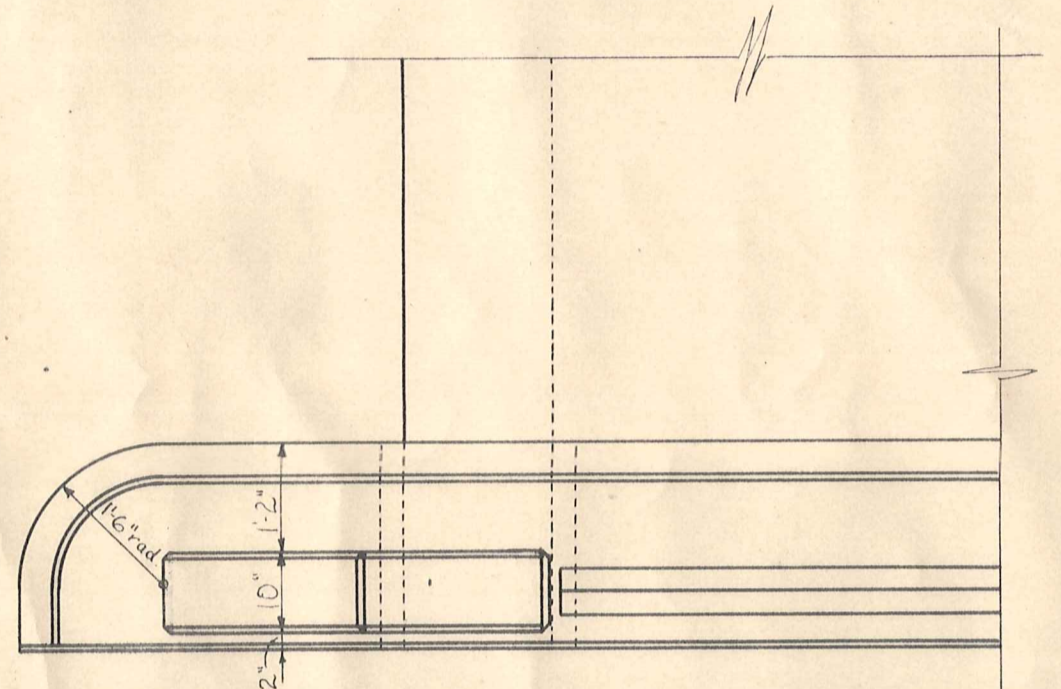


HANDRAILING SECTION  
Scale: 1/2" = 1'-0"

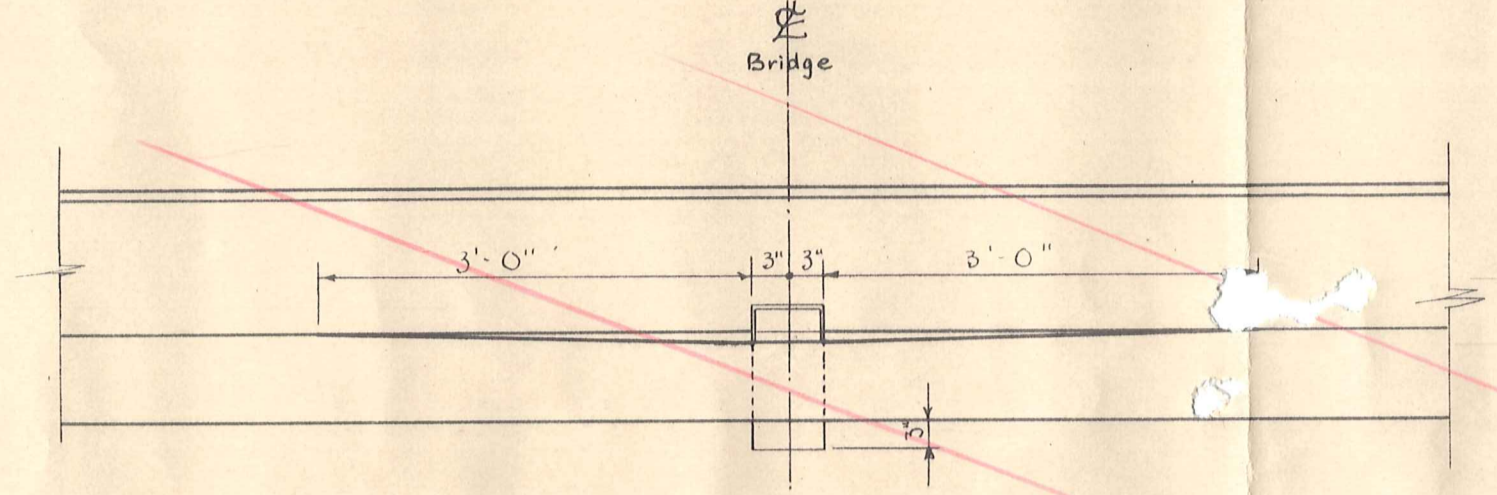


DELETED

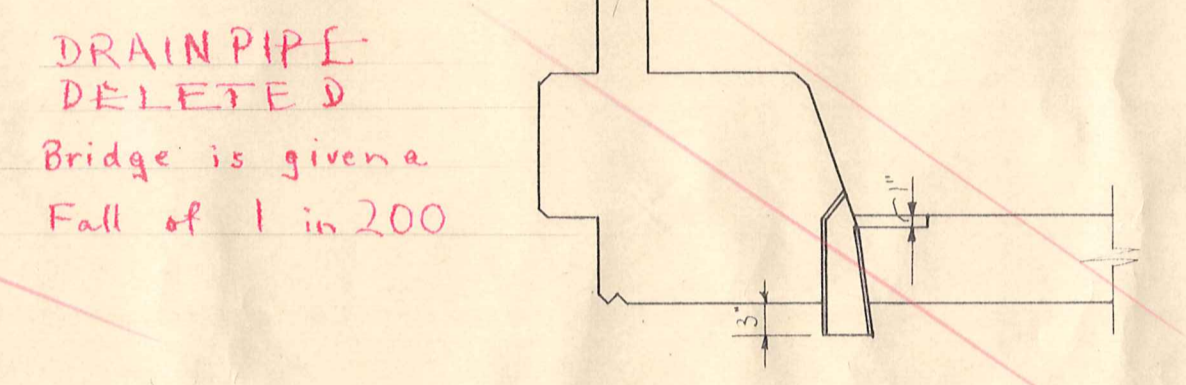
PLAN  
Scale: 1/4" = 1'-0"



PLAN OF END POST AND END KERB  
Scale: 1/2" = 1'-0"

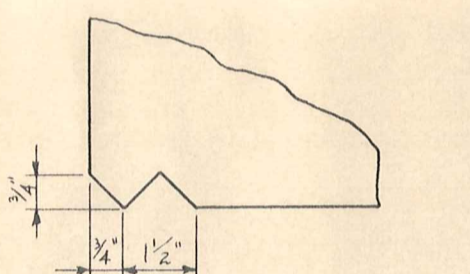


SECTION C-C  
DETAILS  
Scale: 1/4" = 1'-0"

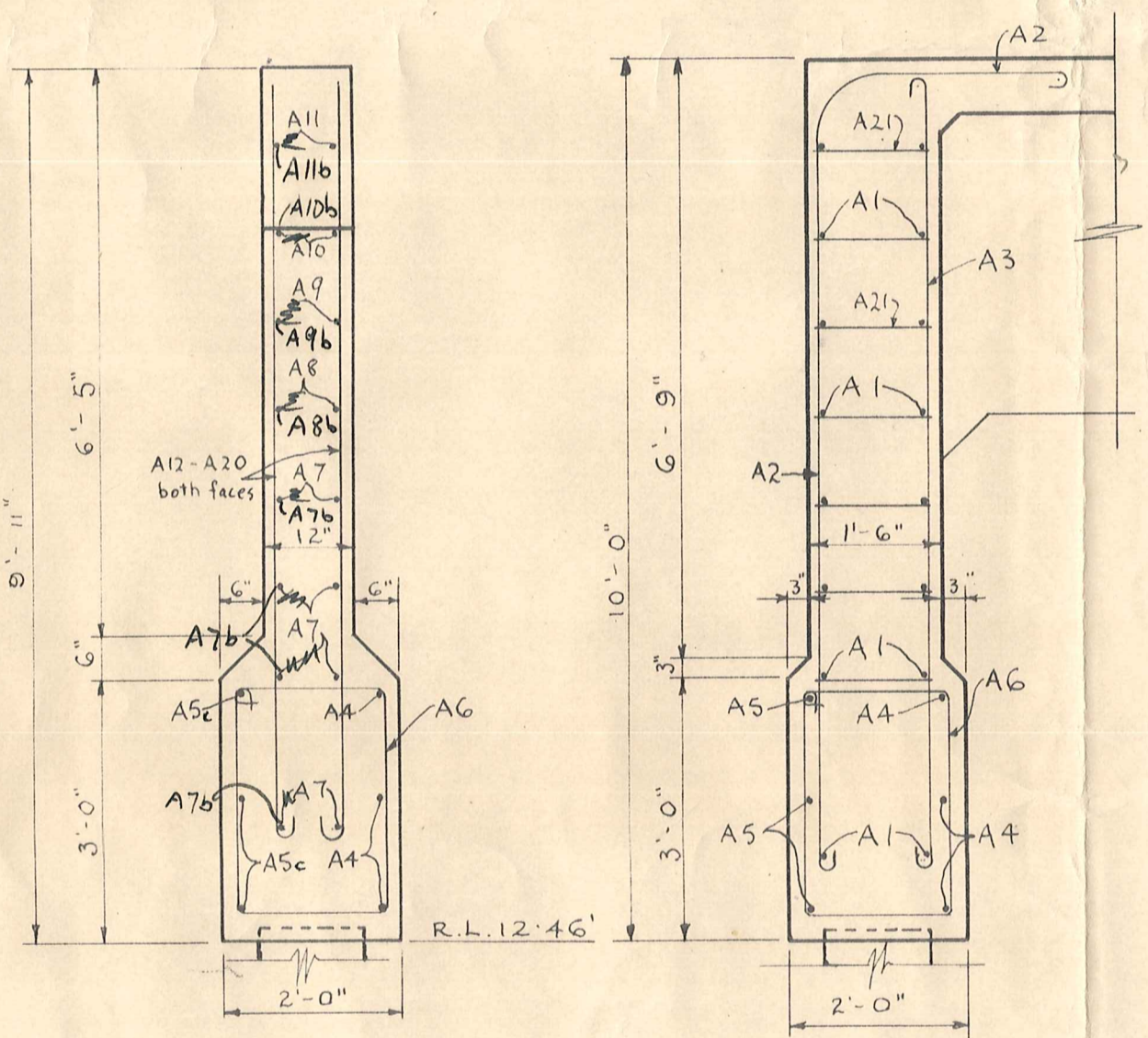


DRAINPIPE  
DELETED  
Bridge is given a  
Fall of 1 in 200

SECTION D-D  
DETAILS  
Scale: 1/4" = 1'-0"

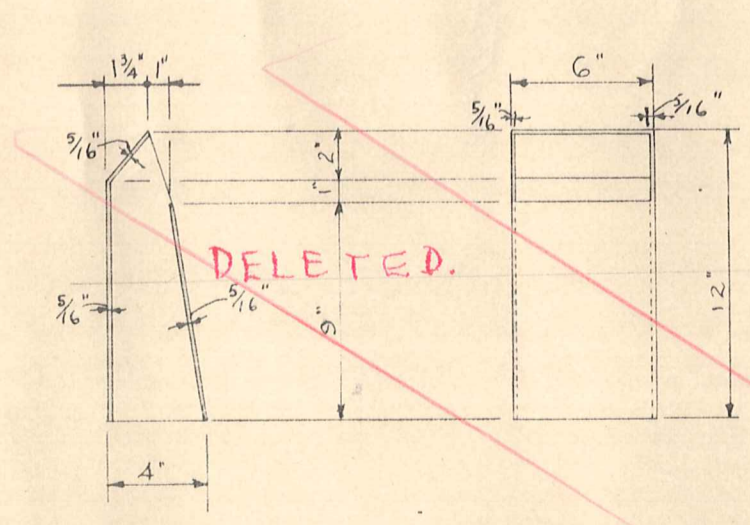


DETAILS OF DRIP  
Scale: 1/4 full size

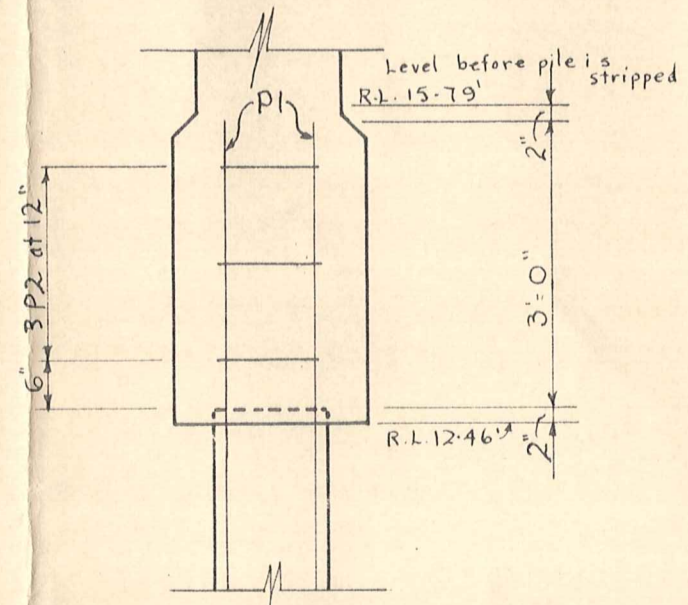


SECTION Y-Y  
Scale: 1/2" = 1'-0"

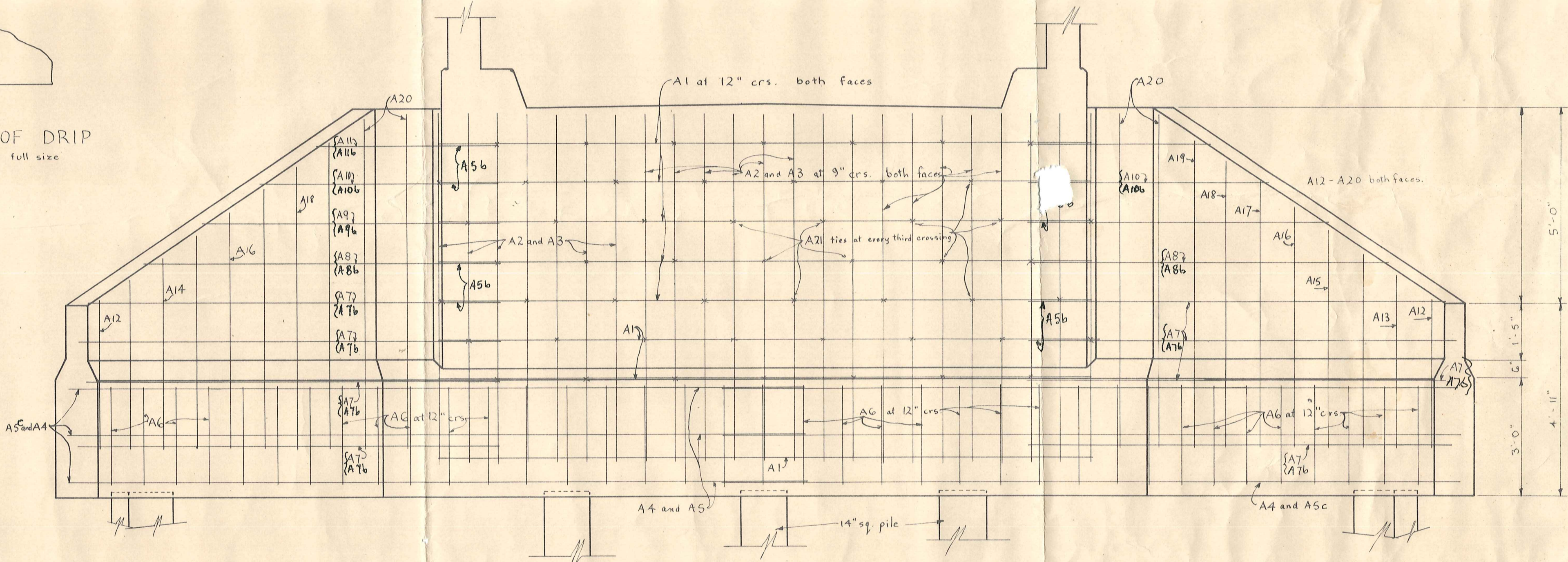
SECTION X-X  
Scale: 1/2" = 1'-0"



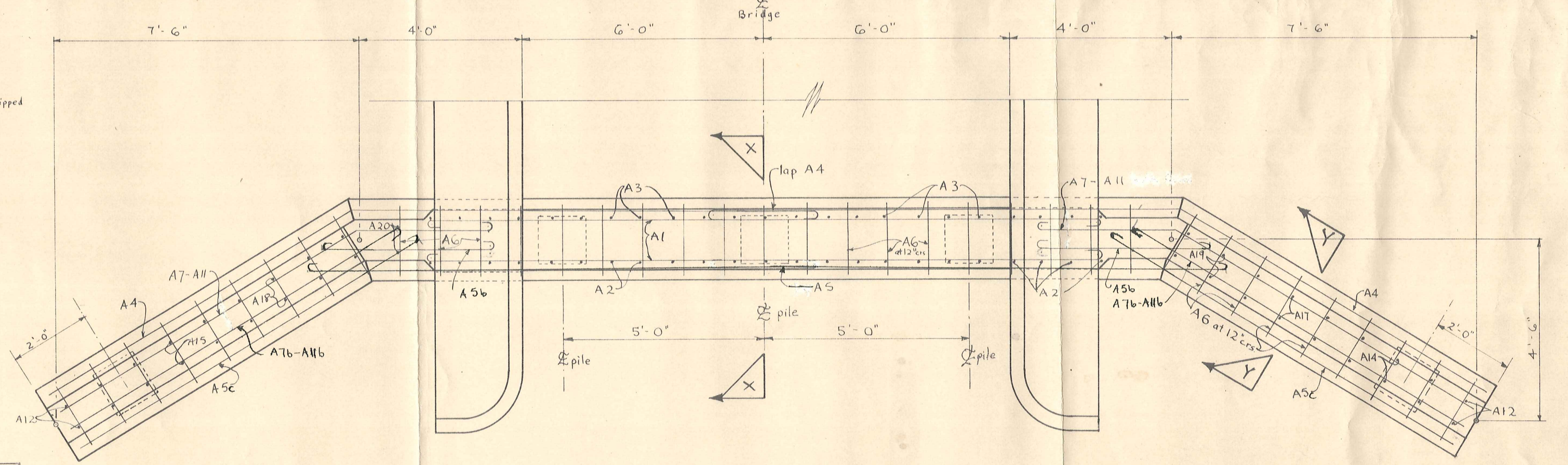
CAST IRON DRAINPIPE  
Scale: 1/2" = 1'-0"



STRIPPING OF PILE HEAD  
Scale: 1/2" = 1'-0"

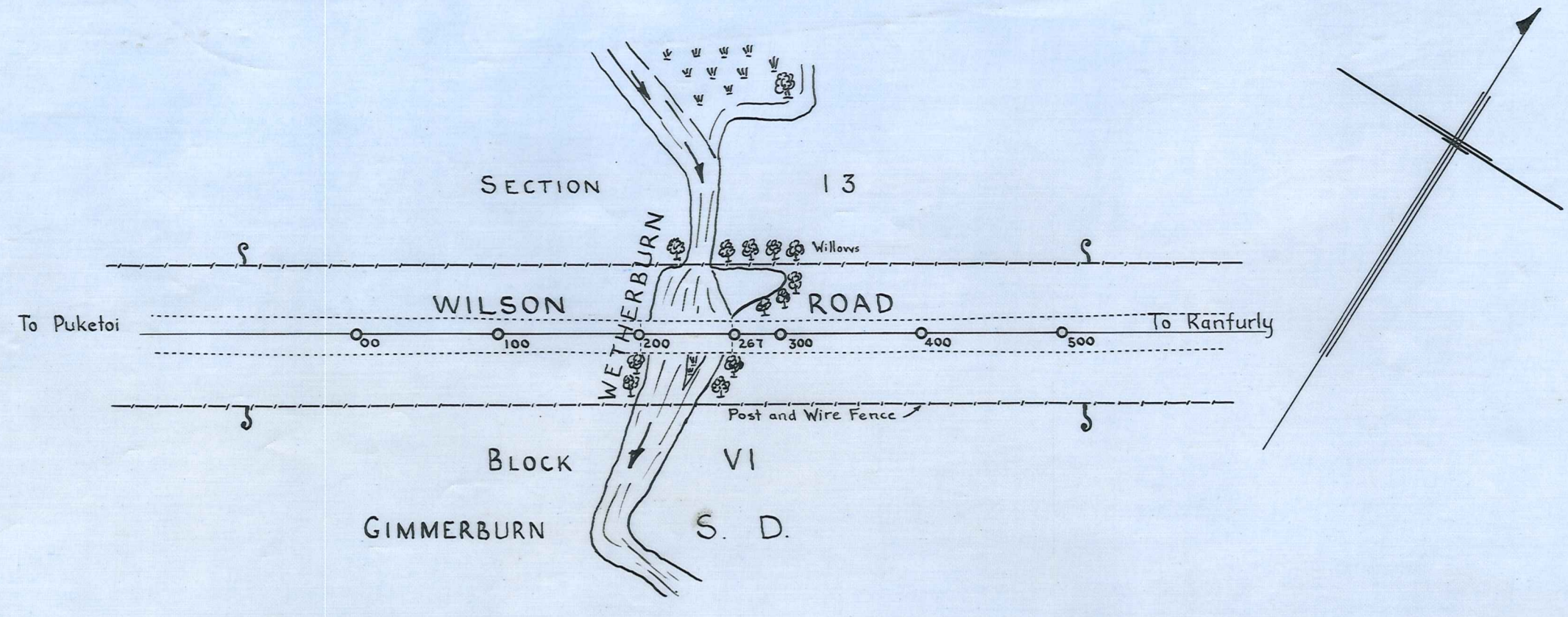


ELEVATION OF ABUTMENT  
Scale: 1/2" = 1'-0"



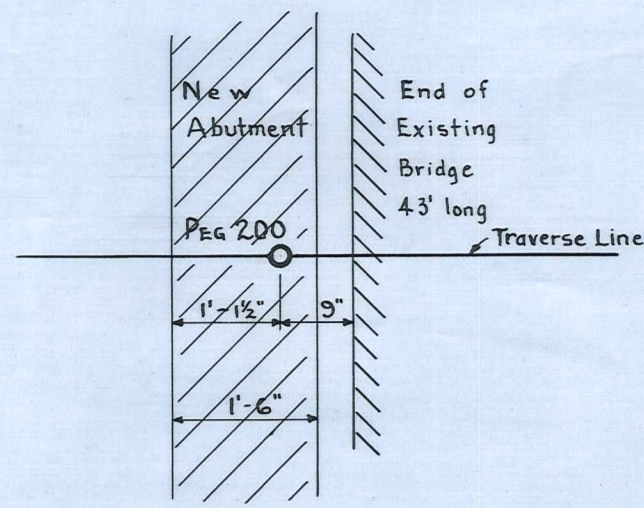
PLAN OF ABUTMENT  
Scale: 1/2" = 1'-0"

MANICOTTE COUNTY CONTRACT NO.	<b>WETHERBURN BRIDGE</b>		SCALE: as shown
	<b>WILSON'S ROAD</b>		SHEET No 2 OF 4 SHEETS
	ABUTMENT AND STRUCTURAL DETAILS		R. J. BLACK
			COUNTY ENGINEER Nov. 1951

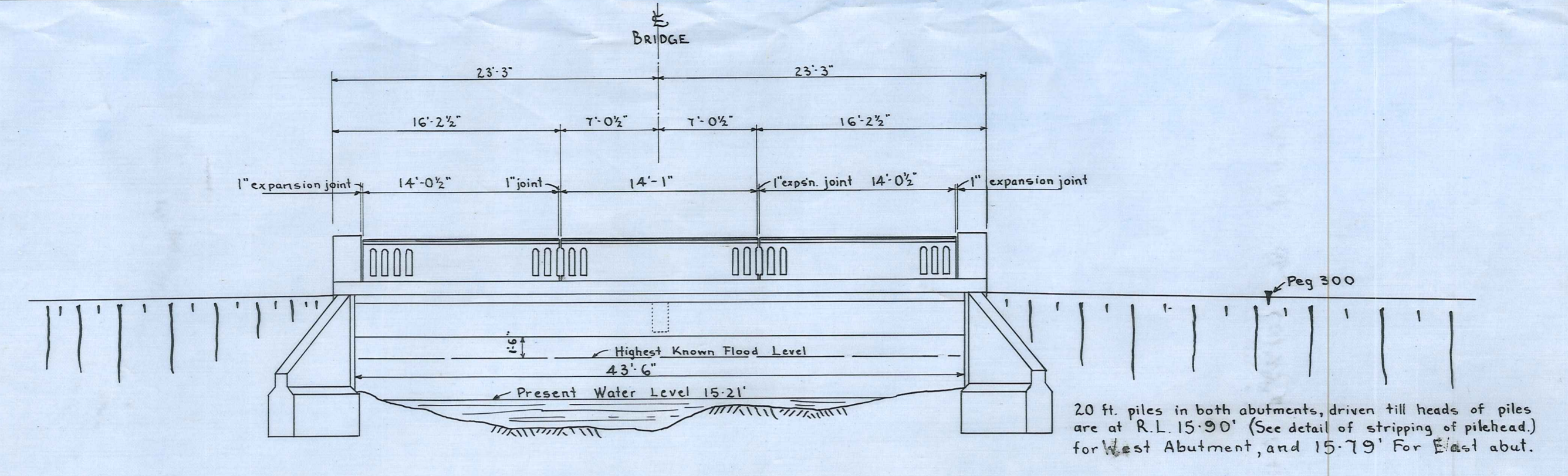


**LOCALITY PLAN**

Scale: 1 ch. to 1 in.



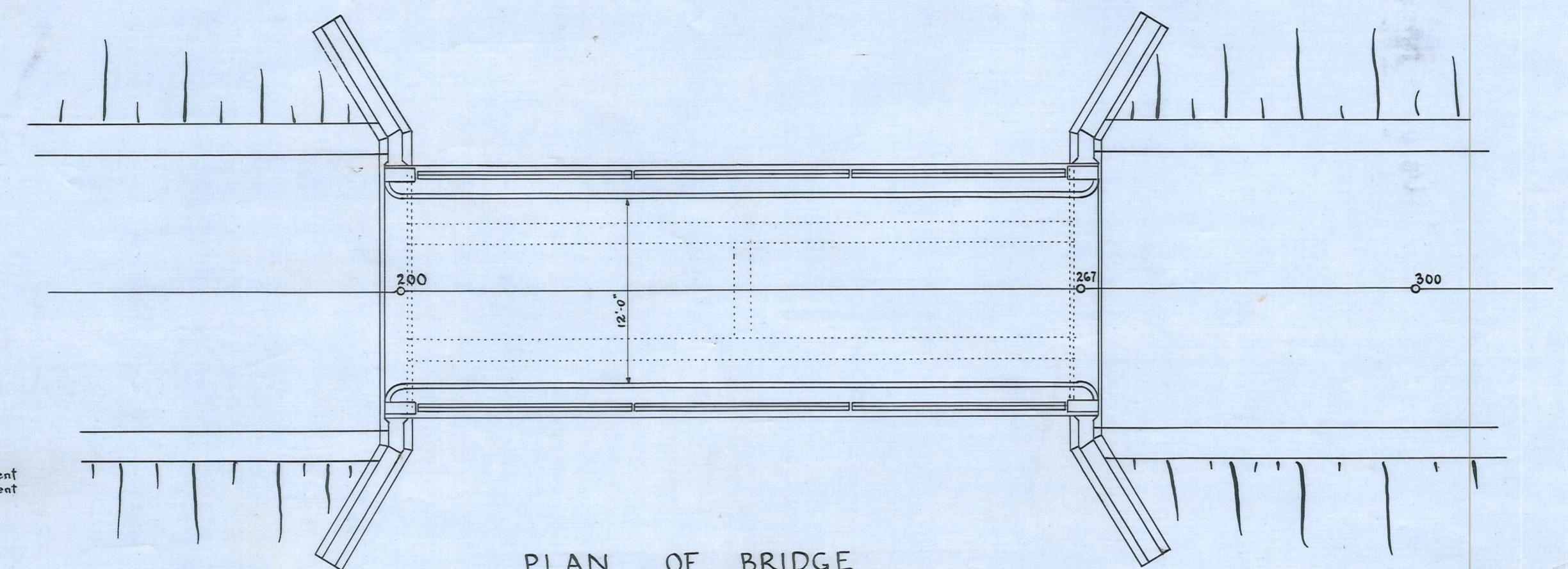
**POSITION OF NEW BRIDGE**  
with respect to  
PEG 200 & OLD BRIDGE  
Scale: 1/2" = 1'-0"



**DOWNSTREAM ELEVATION OF BRIDGE**

Scale: 1/8" = 1'-0"

20 ft. piles in both abutments, driven till heads of piles are at R.L. 15-9'0" (See detail of stripping of pilehead) for West Abutment, and 15-7'9" for East abut.



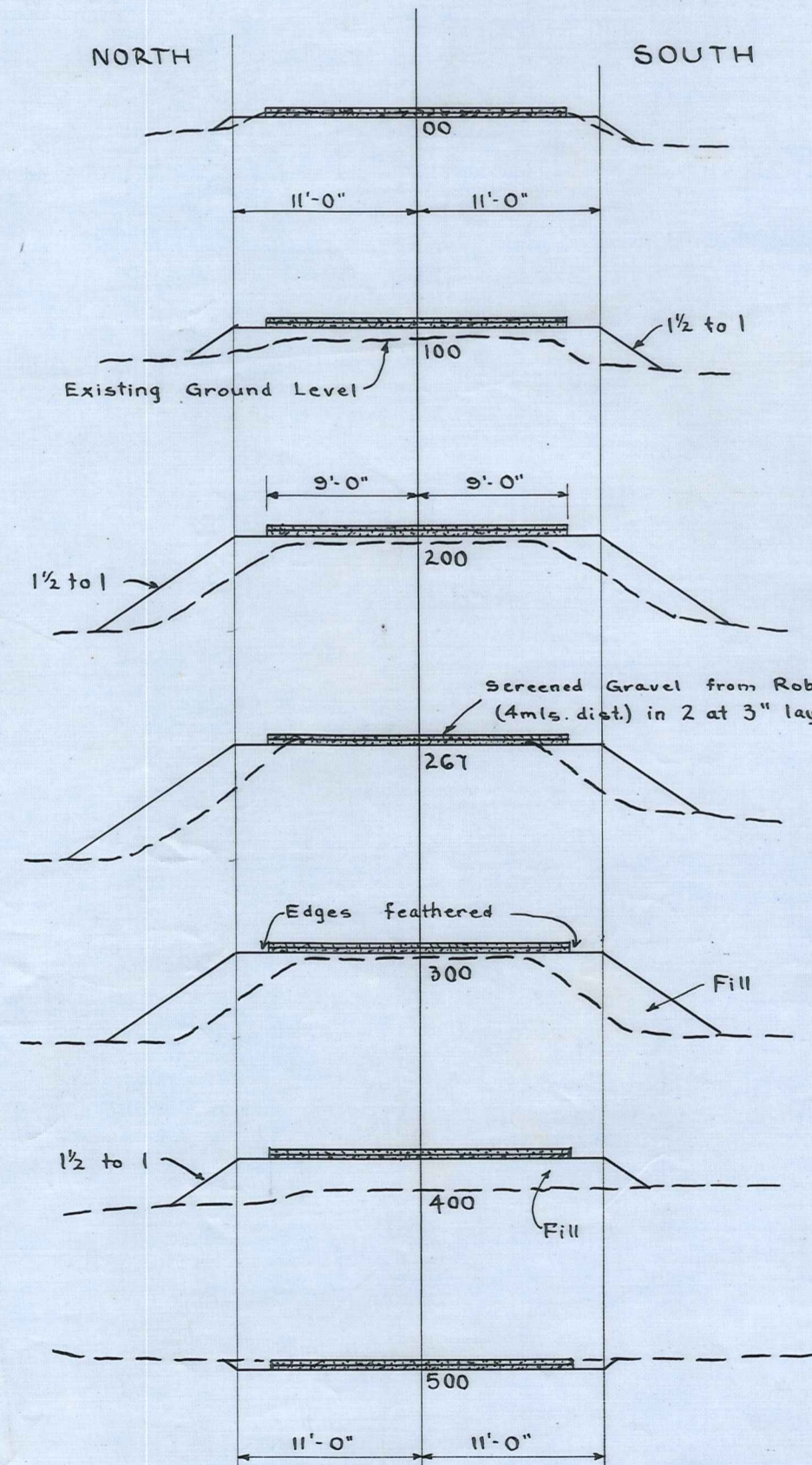
**PLAN OF BRIDGE**

Scale: 1/8" = 1'-0"

Height above Datum (Assumed) 0-00'	V.C. 1 in 43.1		V.C. 1 in 200		V.C. 1 in 36.2	
Banks	0.0	0.0	0.0	0.0	0.0	0.0
Formation Levels	18.00	20.00	20.00	20.00	20.00	20.00
Reduced Levels	18.15	20.03	20.03	20.10	20.10	20.10
Distances (Links)	0.0	30.30	30.30	100	100	465.20
Gradients	1 in 43.1	1 in 200	1 in 200	1 in 36.2	1 in 36.2	1 in 36.2

**LONGITUDINAL SECTION**

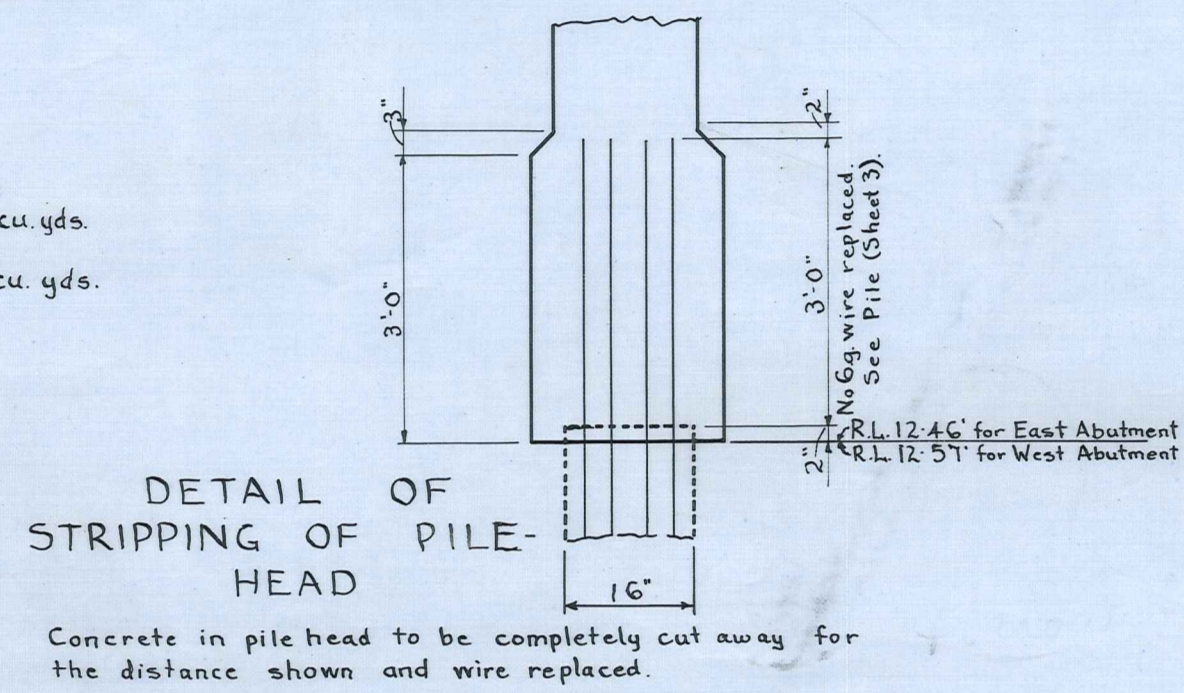
Scale: Horizontal - 66 ft. to 1 in.  
Vertical - 10 ft.



**CROSS SECTIONS**

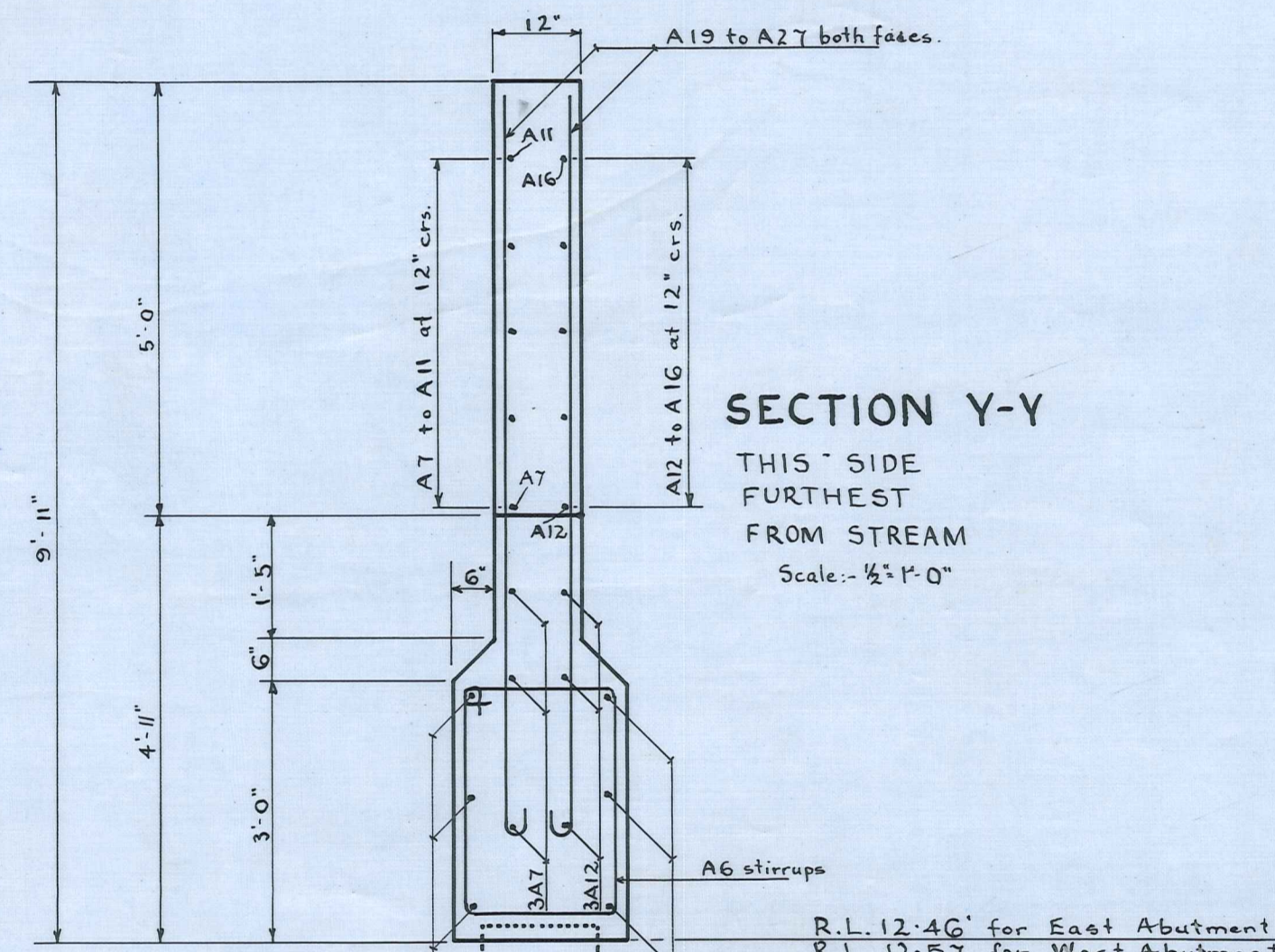
Scale: 10 ft. to 1 in.

Total Fill = 340 cu. yds.  
Total Gravel = 96 cu. yds.



**DETAIL OF STRIPPING OF PILE-HEAD**

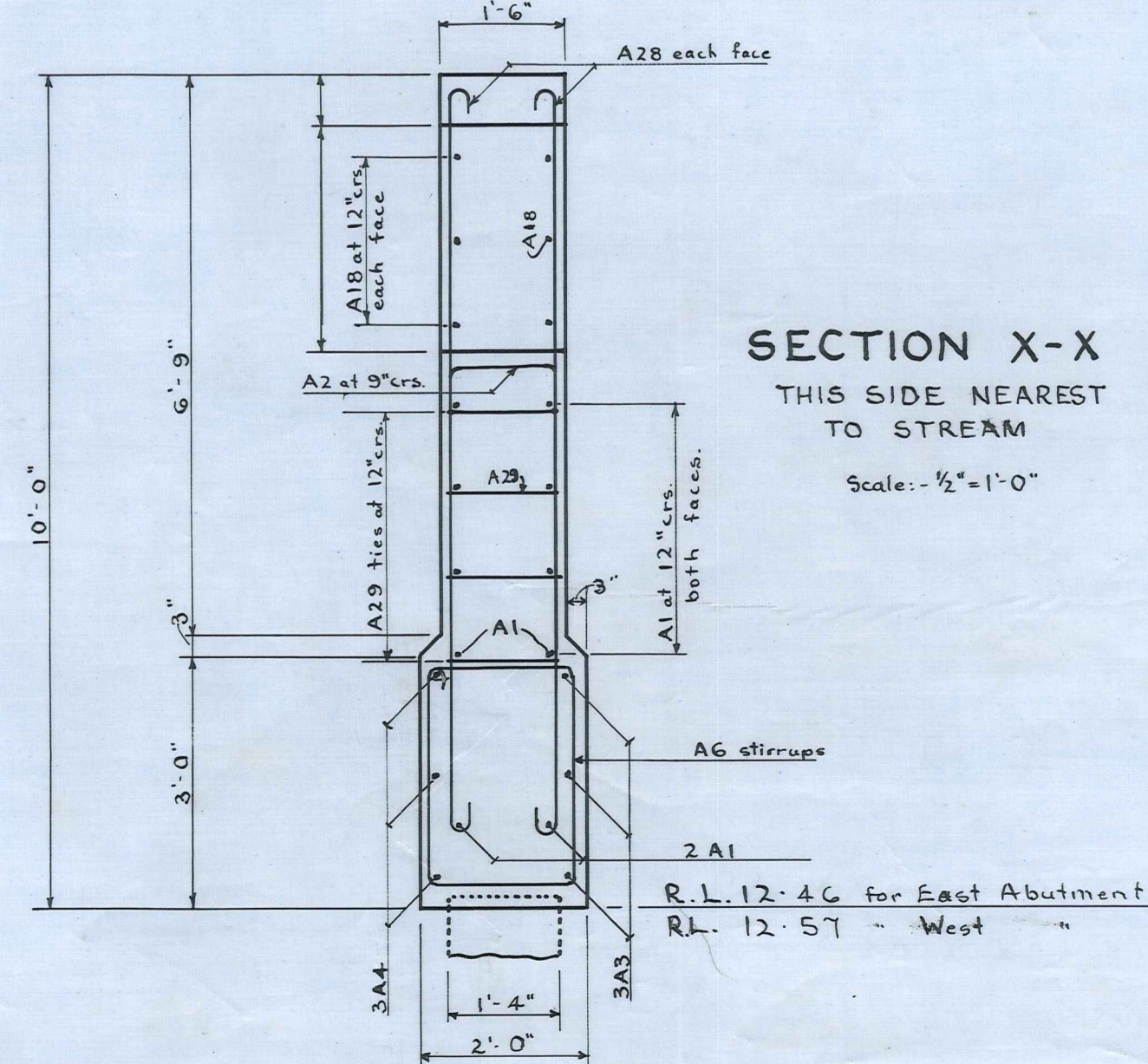
Concrete in pile head to be completely cut away for the distance shown and wire replaced.



**SECTION Y-Y**

THIS SIDE FURTHEST FROM STREAM

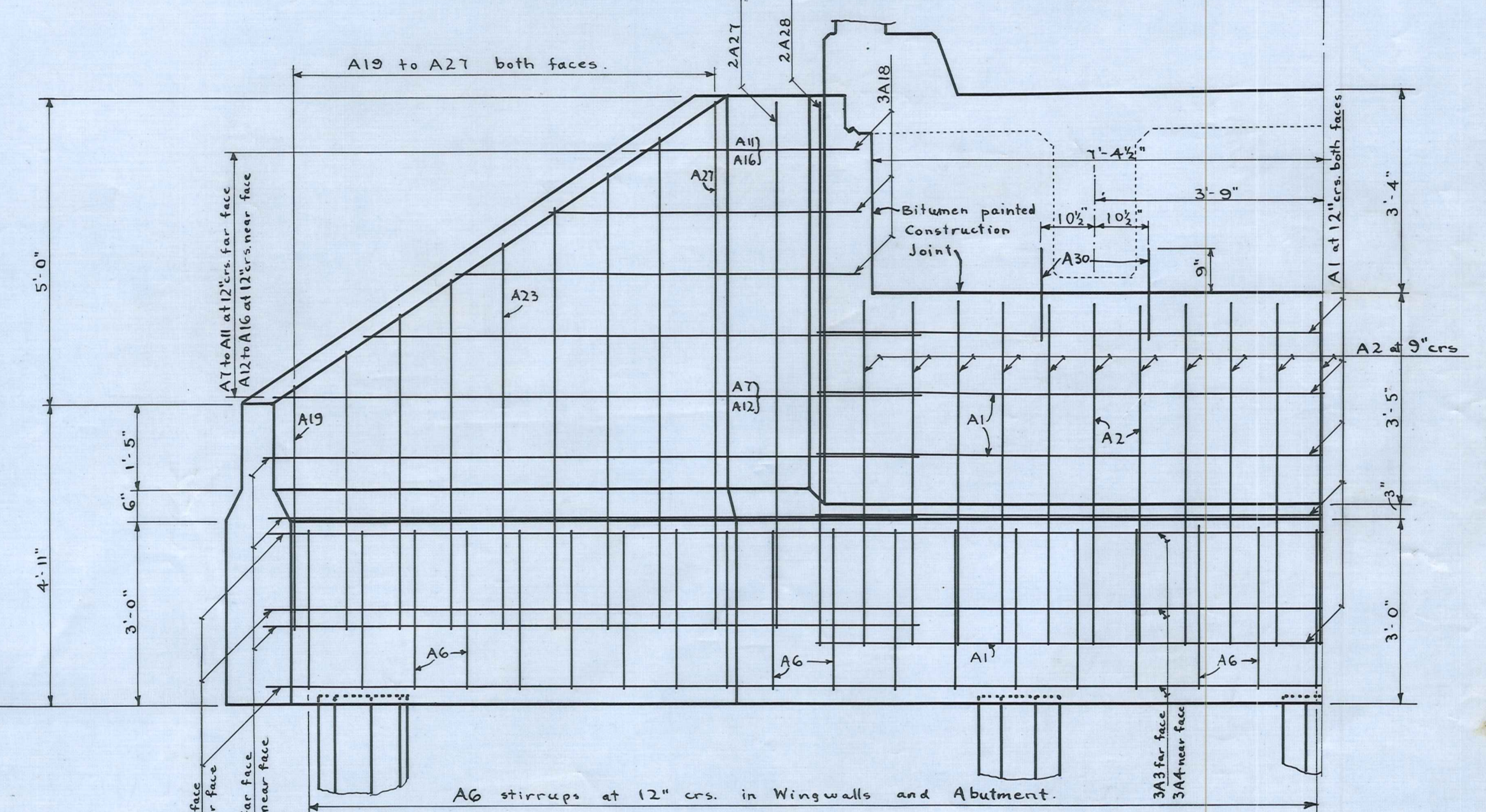
Scale: 1/2" = 1'-0"



**SECTION X-X**

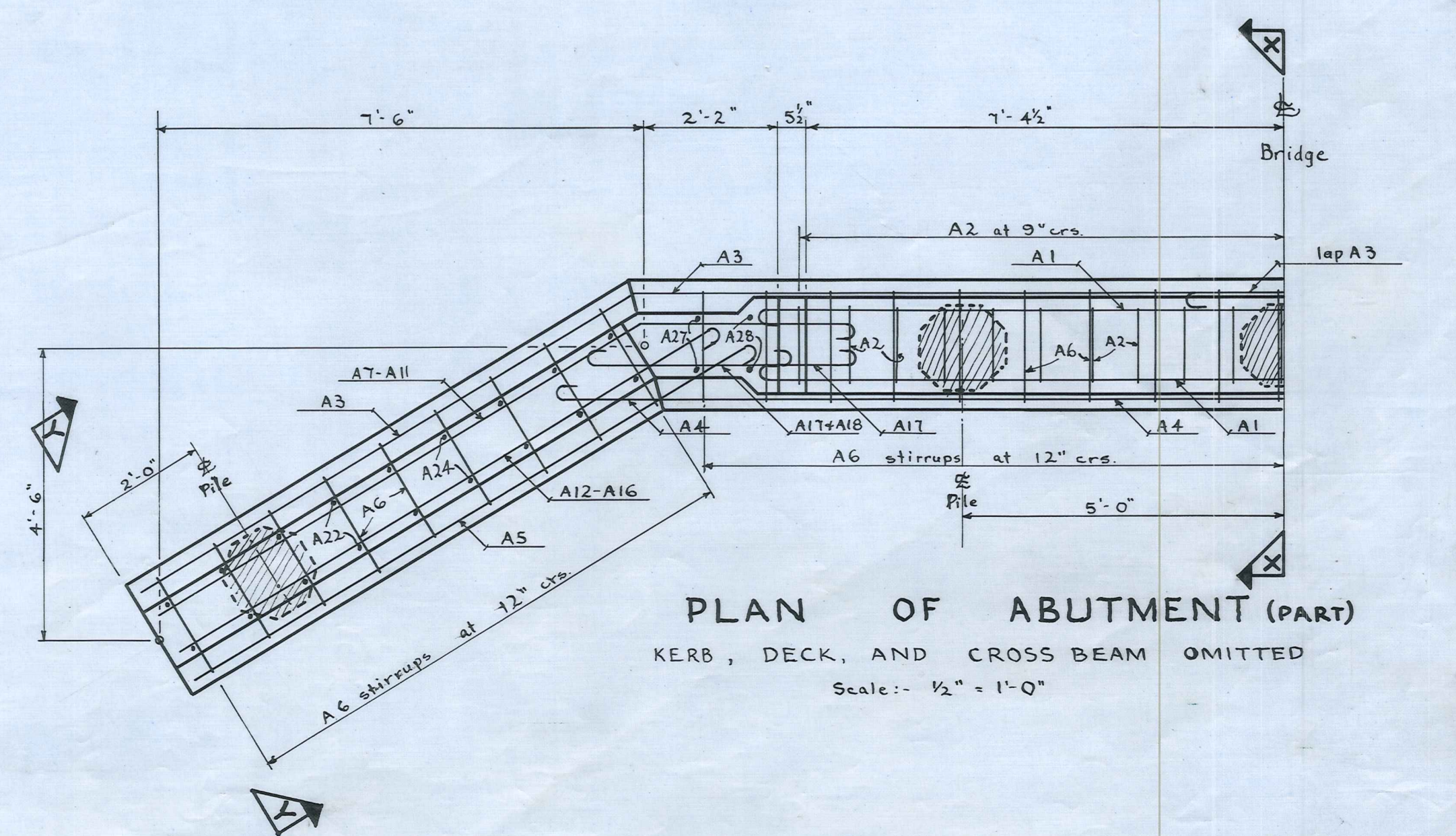
THIS SIDE NEAREST TO STREAM

Scale: 1/2" = 1'-0"



**ELEVATION OF ABUTMENT (PART)**

Scale: 1/2" = 1'-0"



**PLAN OF ABUTMENT (PART)**

KERB, DECK, AND CROSS BEAM OMITTED  
Scale: 1/2" = 1'-0"

MANIOTOTO COUNTY	<b>WETHERBURN BRIDGE</b> <b>WILSON ROAD</b>	SCALES: As shown. <b>M.C.C. 211a</b>
CONTRACT N°	<b>APPROACHES &amp; LOCALITY PLAN</b> <b>ABUTMENT &amp; WINGWALL DETAILS</b>	SHEET 1 OF 4 SHEETS R. J. Black County Engineer May, 1952.