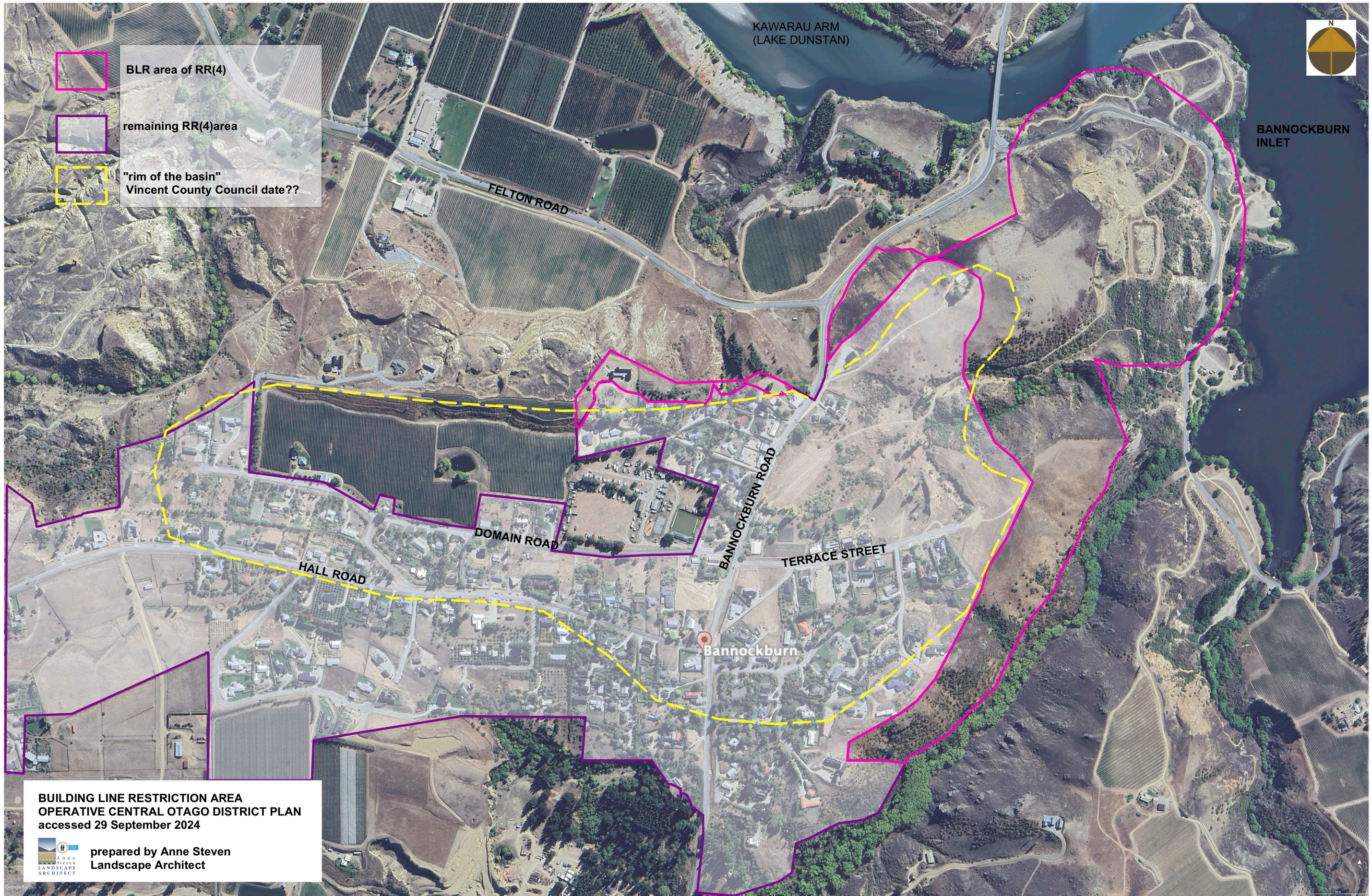


GRAPHIC ATTACHMENT

**to the Evidence in Chief of Anne Steven
Landscape Architect
for Bannockburn Responsible Development Inc.
re Jones FT and Searell FT Proposed Subdivision
Water Race Hill, Bannockburn RC230398**



October 2024



- BLR area of RR(4)
- remaining RR(4) area
- "rim of the basin"
Vincent County Council date??

BUILDING LINE RESTRICTION AREA
OPERATIVE CENTRAL OTAGO DISTRICT PLAN
accessed 29 September 2024



prepared by Anne Steven
Landscape Architect

SHEPHERDS CREEK VALLEY

Bannockburn

The Site

Google Earth View
March 2024

BANNOCKBURN INLET



VIEWS OF THE SITE

**All Photos are taken with a Canon EOS 600D using a 32mm FL (equiv. 50mm full frame).
All images are a single shot except Photos 6 and 7 whihc are stitched individual images.
Photos were taken by Anne Steven on 30 September 2024.**



The Site

PHOTO 1. View west from Cornish Point Road approximately 3km from the Site.



The Site

PHOTO 2. View west from Cairnmuir Road approximately 2.25km from the Site.

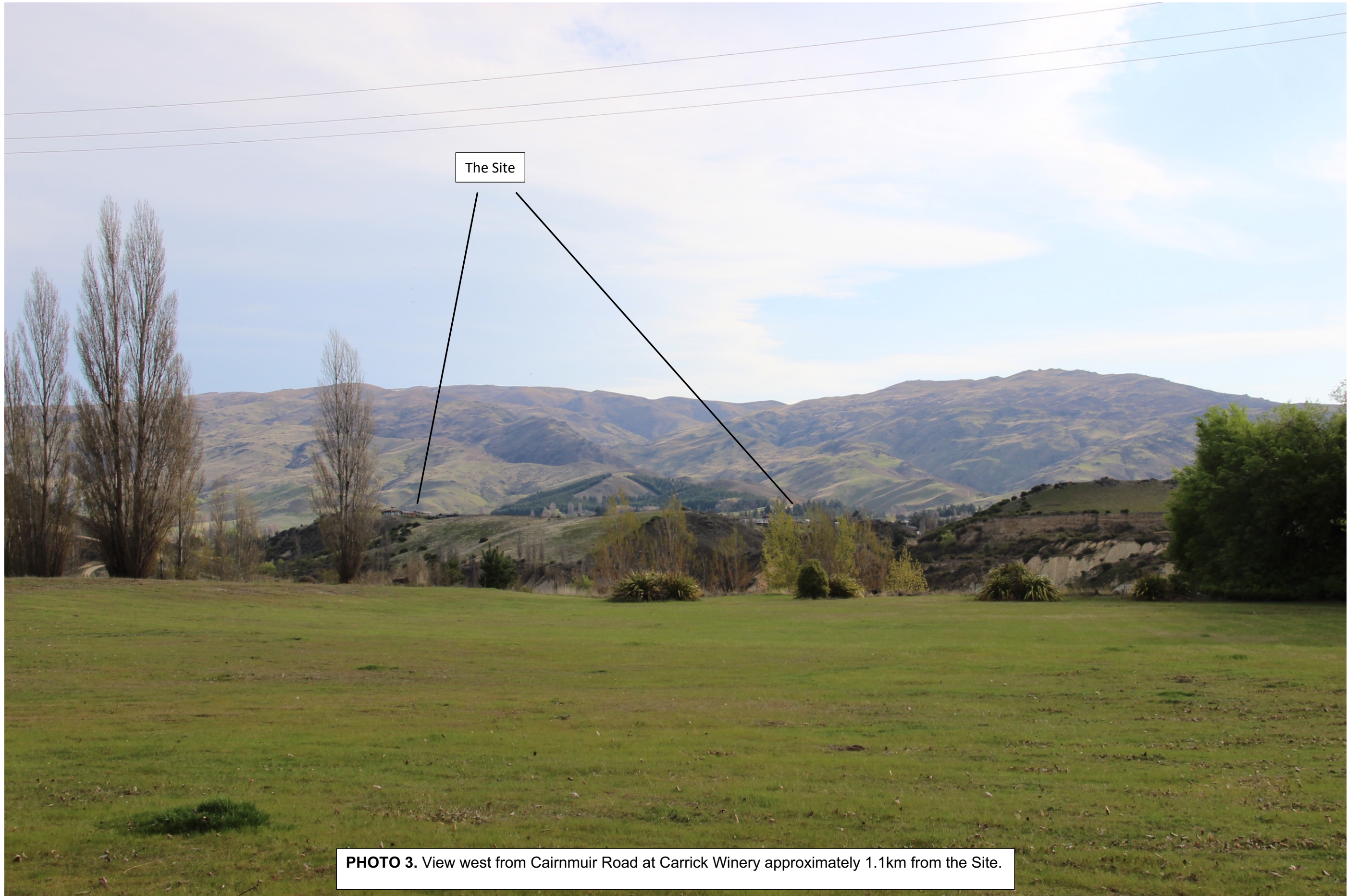


PHOTO 3. View west from Cairnmuir Road at Carrick Winery approximately 1.1km from the Site.

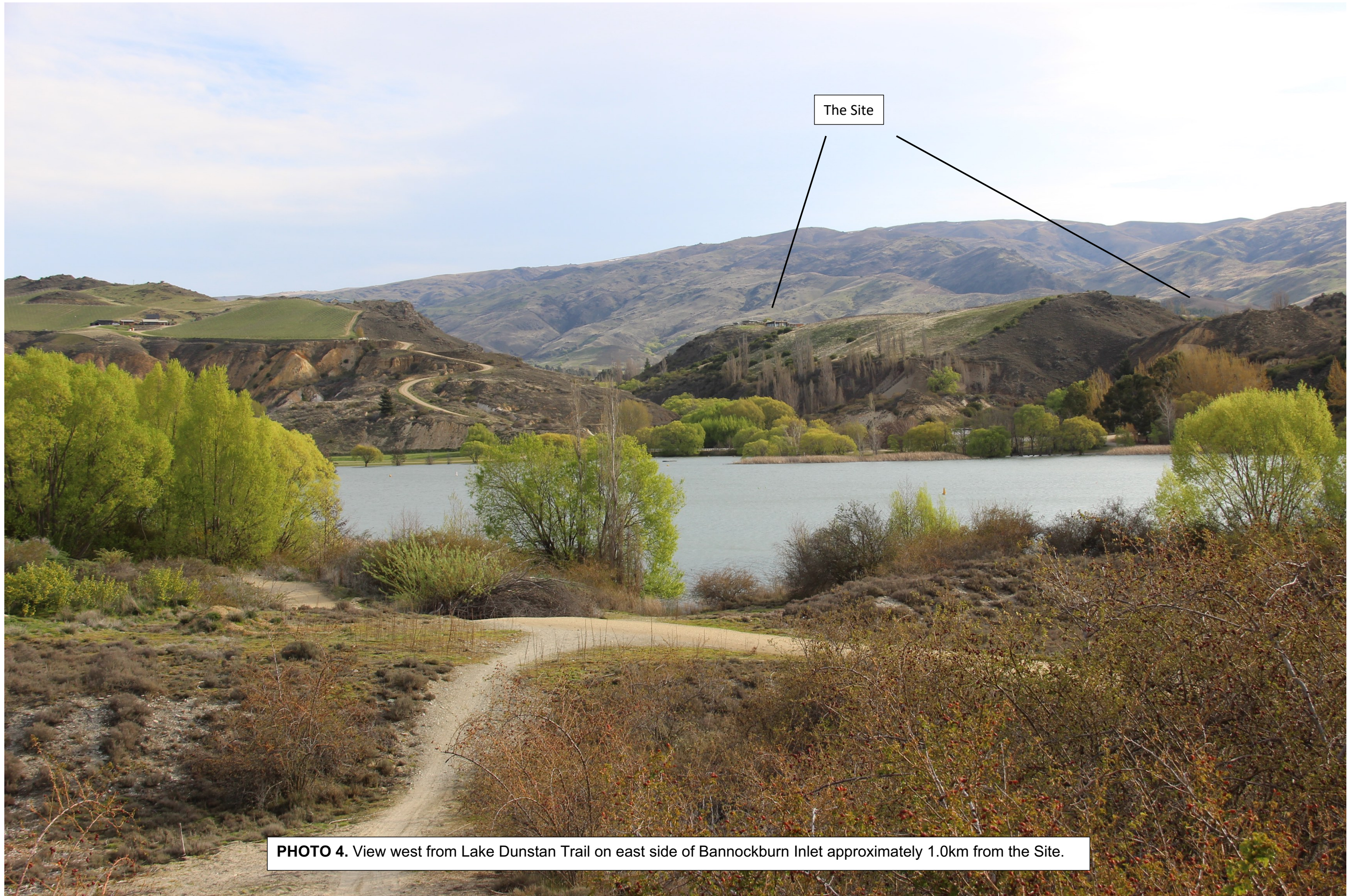


PHOTO 4. View west from Lake Dunstan Trail on east side of Bannockburn Inlet approximately 1.0km from the Site.

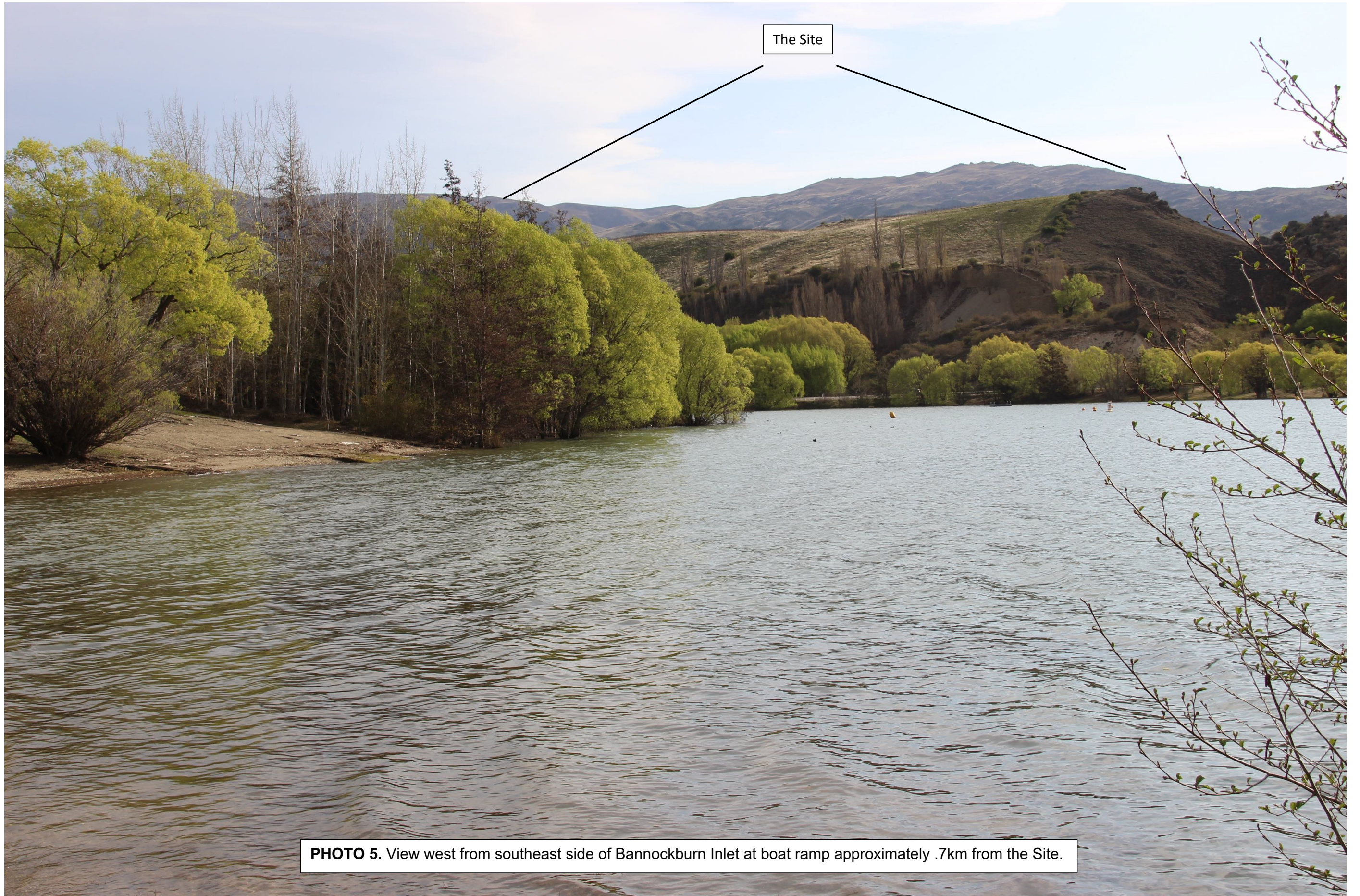
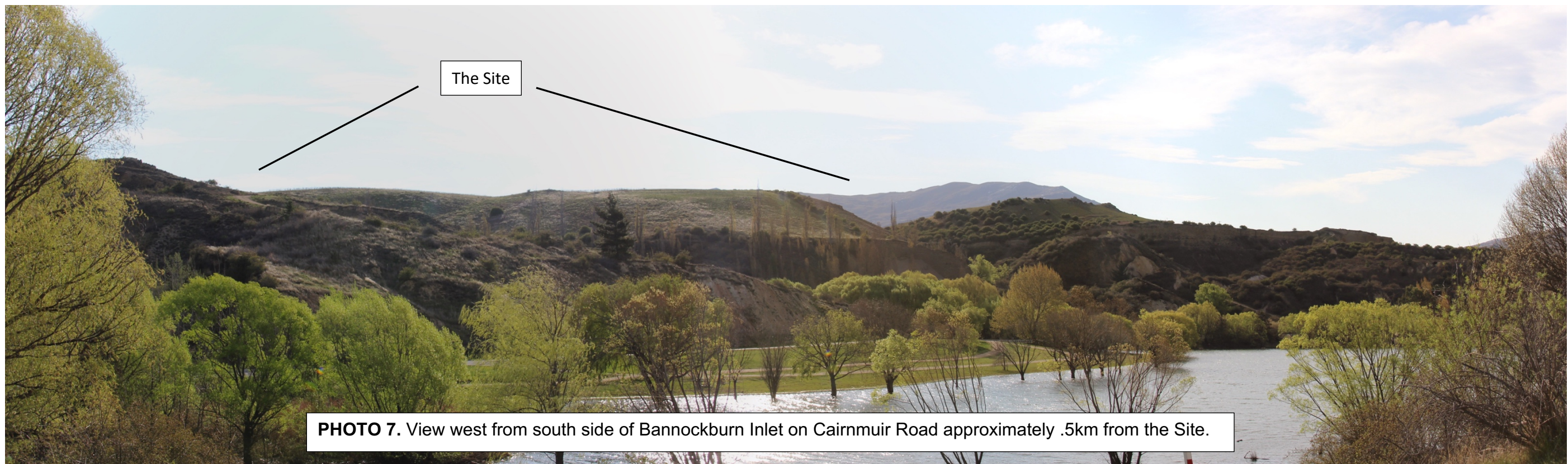
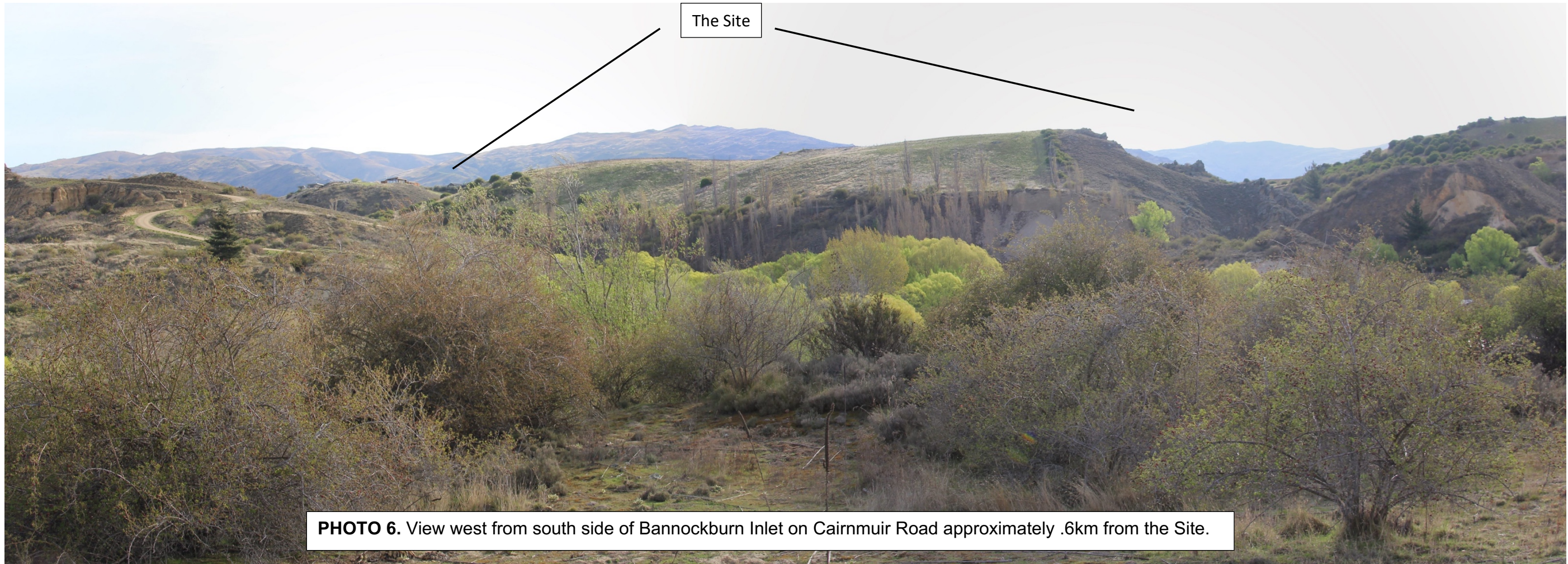


PHOTO 5. View west from southeast side of Bannockburn Inlet at boat ramp approximately .7km from the Site.





The Site

PHOTO 8. View southwest from Richards Beach approximately 3.55km from the Site.