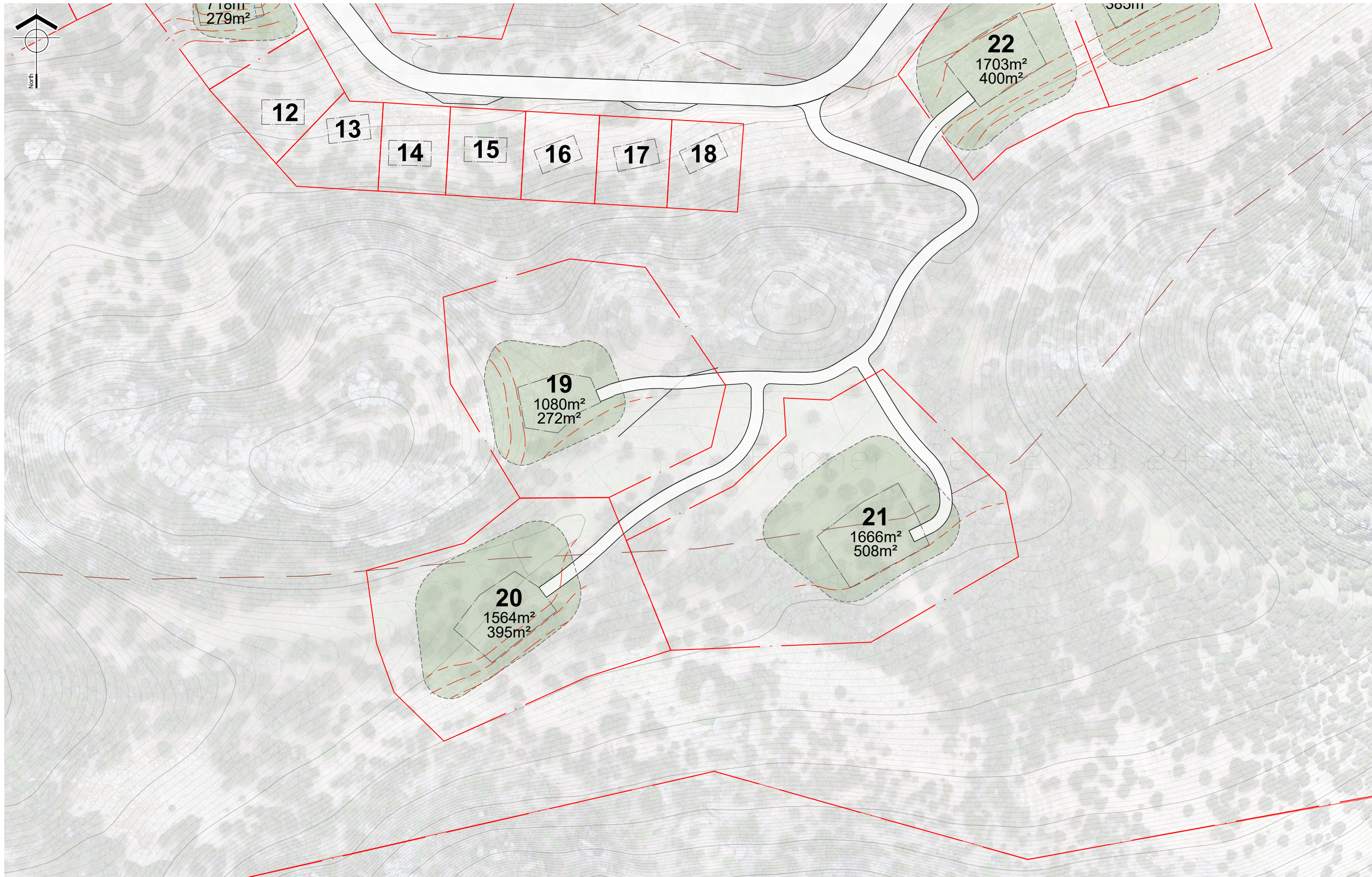
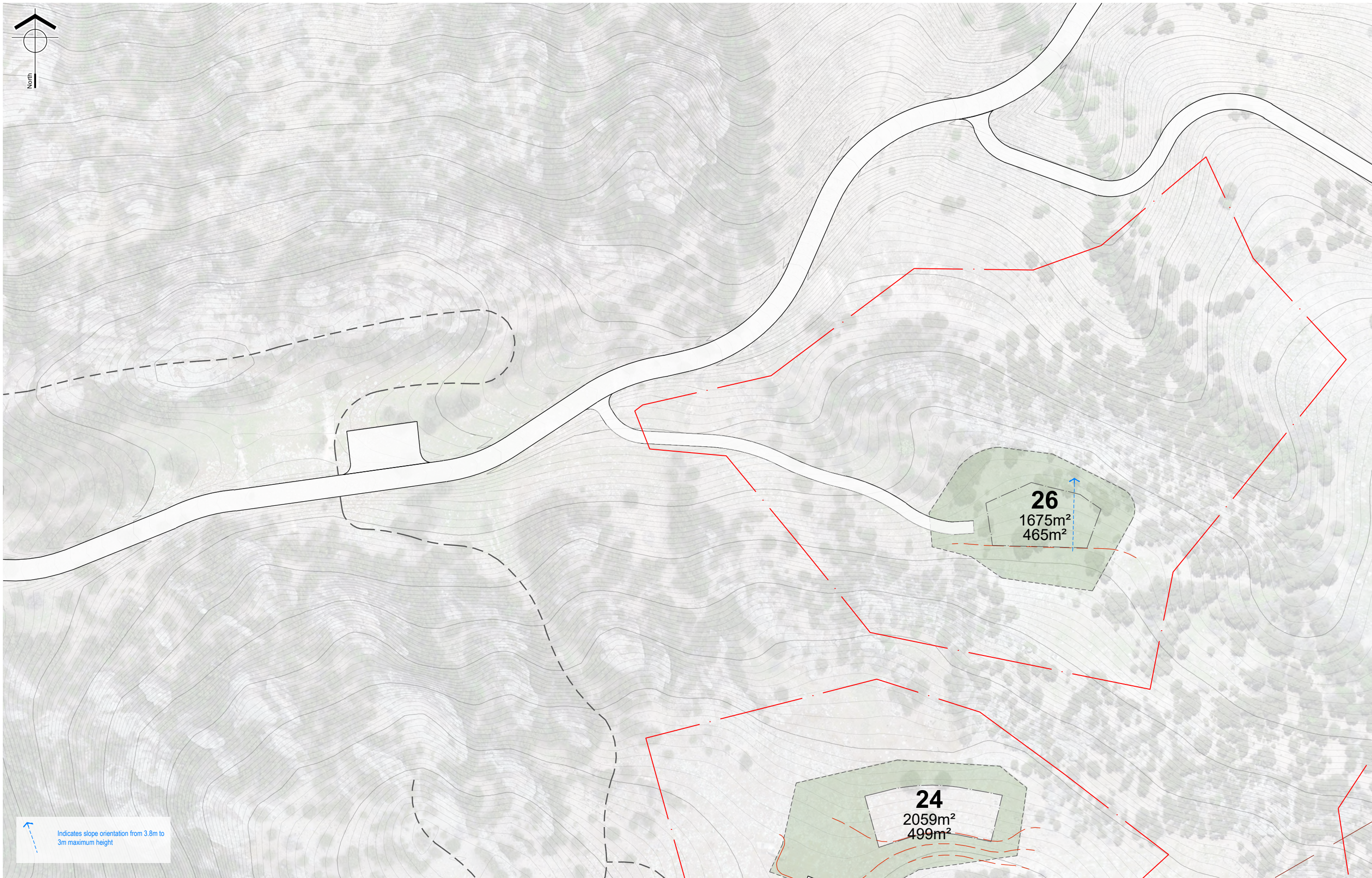


Indicates slope orientation from 3.8m to 3m maximum height

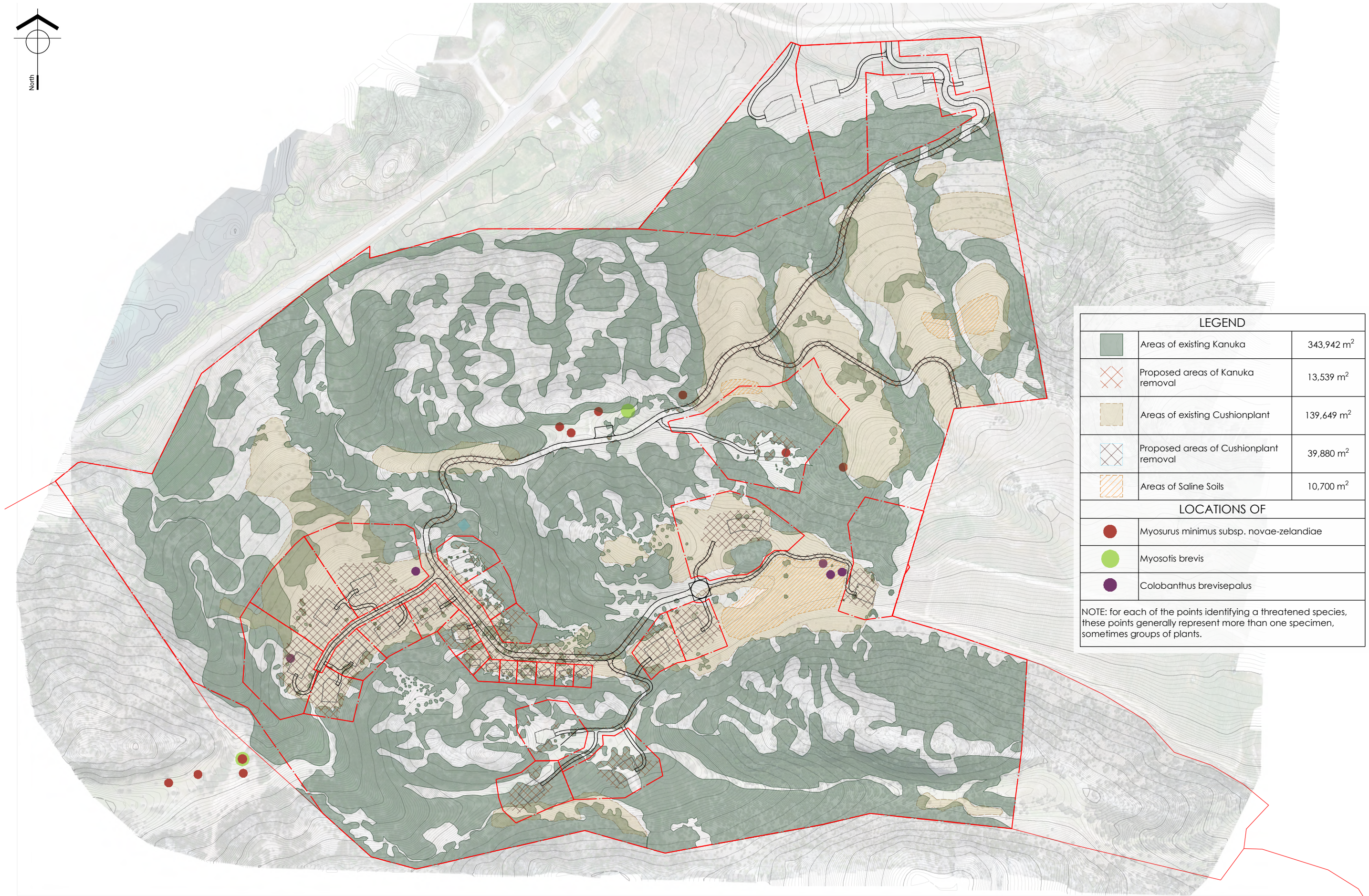
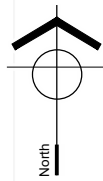






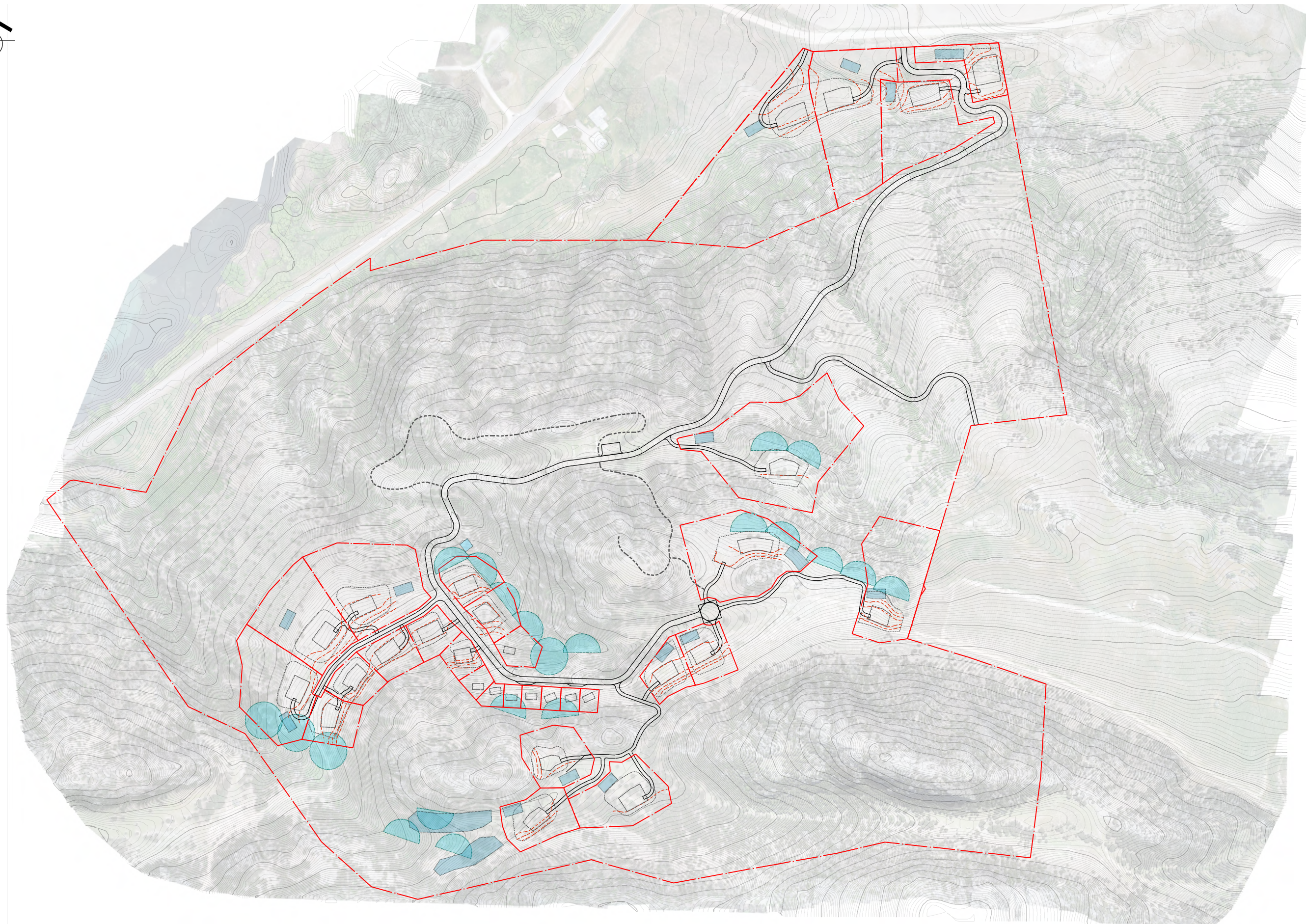
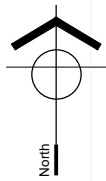
Indicates slope orientation from 3.8m to 3m maximum height



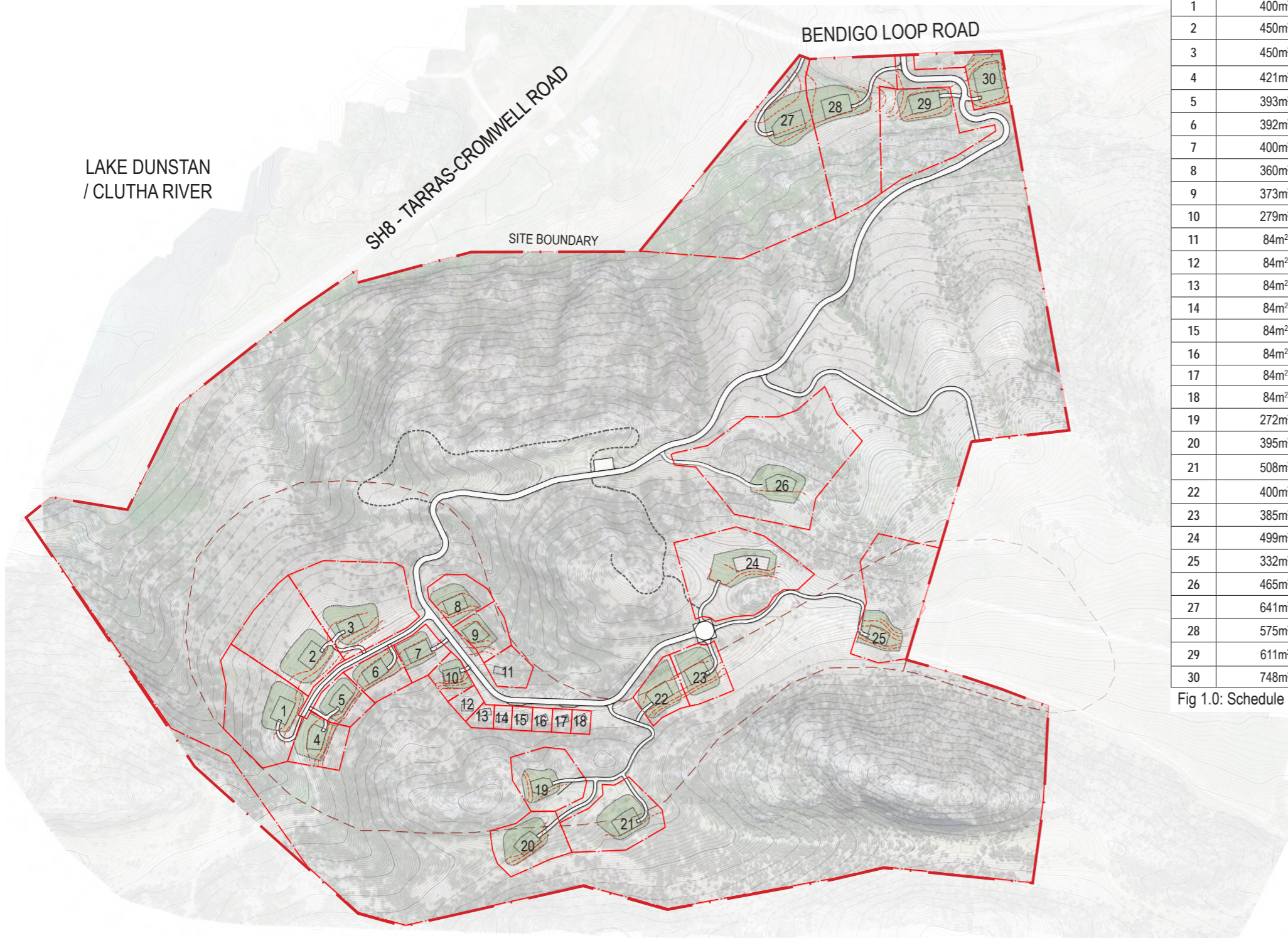


LEGEND		
	Areas of existing Kanuka	343,942 m <sup>2</sup>
	Proposed areas of Kanuka removal	13,539 m <sup>2</sup>
	Areas of existing Cushionplant	139,649 m <sup>2</sup>
	Proposed areas of Cushionplant removal	39,880 m <sup>2</sup>
	Areas of Saline Soils	10,700 m <sup>2</sup>
LOCATIONS OF		
	<i>Myosurus minimus</i> subsp. <i>novae-zelandiae</i>	
	<i>Myosotis brevis</i>	
	<i>Colobanthus brevisepalus</i>	
NOTE: for each of the points identifying a threatened species, these points generally represent more than one specimen, sometimes groups of plants.		





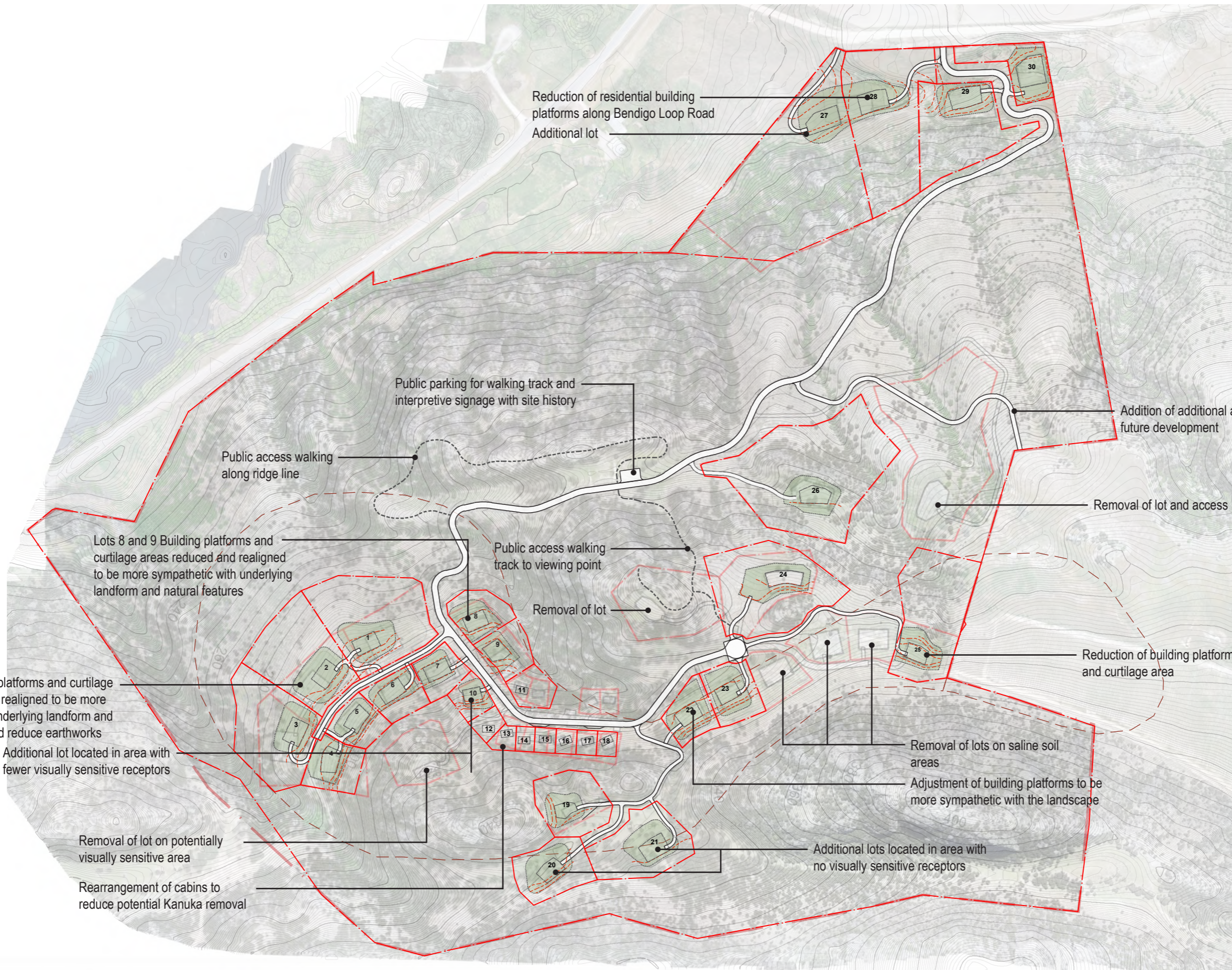




Lot	Residential Building Platform (M <sup>2</sup> )	Maximum Site Coverage (M <sup>2</sup> )	Site Coverage of RBP	Curtilage Area (M <sup>2</sup> )	Platform RL	Maximum Height RL	Maximum Building Height
1	400m <sup>2</sup>	220m <sup>2</sup>	55%	1823m <sup>2</sup>	+292.00	+295.80	3.8m
2	450m <sup>2</sup>	220m <sup>2</sup>	49%	2019m <sup>2</sup>	+291.50	+295.30	3.8m
3	450m <sup>2</sup>	220m <sup>2</sup>	49%	1603m <sup>2</sup>	+292.00	+295.80	3.8m
4	421m <sup>2</sup>	220m <sup>2</sup>	52%	1411m <sup>2</sup>	+297.00	+280.80	3.8m
5	393m <sup>2</sup>	220m <sup>2</sup>	56%	1104m <sup>2</sup>	+297.00	+280.80	3.8m
6	392m <sup>2</sup>	220m <sup>2</sup>	56%	1191m <sup>2</sup>	+298.00	+301.80	3.8m
7	400m <sup>2</sup>	220m <sup>2</sup>	55%	985m <sup>2</sup>	+299.00	+302.80	3.8m
8	360m <sup>2</sup>	200m <sup>2</sup>	55%	1313m <sup>2</sup>	+296.00	+300.80	3.8m
9	373m <sup>2</sup>	200m <sup>2</sup>	54%	1084m <sup>2</sup>	+300.00	+303.80	3.8m
10	279m <sup>2</sup>	150m <sup>2</sup>	54%	718m <sup>2</sup>	+304.00	+307.80	3.8m
11	84m <sup>2</sup>	84m <sup>2</sup>	100%	-	-	-	5.0m
12	84m <sup>2</sup>	84m <sup>2</sup>	100%	-	-	-	5.0m
13	84m <sup>2</sup>	84m <sup>2</sup>	100%	-	-	-	5.0m
14	84m <sup>2</sup>	84m <sup>2</sup>	100%	-	-	-	5.0m
15	84m <sup>2</sup>	84m <sup>2</sup>	100%	-	-	-	5.0m
16	84m <sup>2</sup>	84m <sup>2</sup>	100%	-	-	-	5.0m
17	84m <sup>2</sup>	84m <sup>2</sup>	100%	-	-	-	5.0m
18	84m <sup>2</sup>	84m <sup>2</sup>	100%	-	-	-	5.0m
19	272m <sup>2</sup>	250m <sup>2</sup>	91%	1080m <sup>2</sup>	+332.50	+337.00	4.5m
20	395m <sup>2</sup>	250m <sup>2</sup>	63%	1564m <sup>2</sup>	+329.00	+333.50	4.5m
21	508m <sup>2</sup>	250m <sup>2</sup>	49%	1666m <sup>2</sup>	+333.00	+337.50	4.5m
22	400m <sup>2</sup>	250m <sup>2</sup>	63%	1703m <sup>2</sup>	+322.00	+326.50	4.5m
23	385m <sup>2</sup>	250m <sup>2</sup>	65%	1545m <sup>2</sup>	+322.00	+326.50	4.5m
24	499m <sup>2</sup>	250m <sup>2</sup>	50%	2059m <sup>2</sup>	+323.00	+327.50	4.5m
25	332m <sup>2</sup>	220m <sup>2</sup>	66%	1440m <sup>2</sup>	+328.00	+331.80	3.8m
26	465m <sup>2</sup>	260m <sup>2</sup>	56%	1675m <sup>2</sup>	+302.00	+305.80	3.8m
27	641m <sup>2</sup>	350m <sup>2</sup>	55%	2207m <sup>2</sup>	+203.00	+208.00	5.0m
28	575m <sup>2</sup>	350m <sup>2</sup>	61%	2035m <sup>2</sup>	+204.00	+209.00	5.0m
29	611m <sup>2</sup>	350m <sup>2</sup>	57%	1671m <sup>2</sup>	+210.00	+215.00	5.0m
30	748m <sup>2</sup>	350m <sup>2</sup>	47%	2089m <sup>2</sup>	+210.00	+215.00	5.0m

Fig 1.0: Schedule of building platforms

note:  
Roads and driveways to be deisgned by  
engineer or surveyor



Lots 1 - 7 Building platforms and curtilage areas reduced and realigned to be more sympathetic with underlying landform and natural features and reduce earthworks

Additional lot located in area with fewer visually sensitive receptors

Removal of lot on potentially visually sensitive area

Rearrangement of cabins to reduce potential Kanuka removal

Lots 8 and 9 Building platforms and curtilage areas reduced and realigned to be more sympathetic with underlying landform and natural features

Public access walking along ridge line

Public parking for walking track and interpretive signage with site history

Public access walking track to viewing point

Removal of lot

Reduction of residential building platforms along Bendigo Loop Road  
Additional lot

Addition of additional access for potential future development

Removal of lot and access

Reduction of building platform and curtilage area

Removal of lots on saline soil areas

Adjustment of building platforms to be more sympathetic with the landscape

Additional lots located in area with no visually sensitive receptors

